

### 2 EXCLUSIVE NEW SKUS AVAILABLE



**904-310**

Dodge Sprinter 2500 2009-07, Dodge Sprinter 3500 2009-07

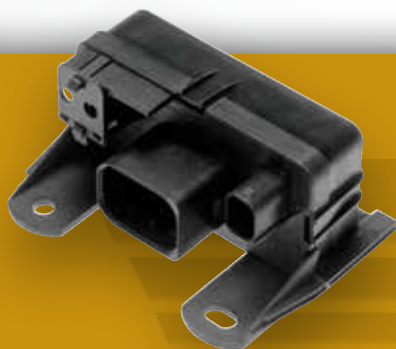
Glow Plug Modules properly heat the vehicle's glow plugs to ensure the diesel engine starts smoothly and reliably in cold weather

- Dorman's Glow Plug Modules are Vehicle Simulator Tested for durability and quality assurance
- **READY TO INSTALL**
  - Plug and Play repair solution for ease of installation
  - No programming required
- Direct replacement restores drivability and the diesel glow plug power system to original operation
- **Dorman Engineered** – Improved design allows diagnosis of individual glow plugs
- **Reduce Repair Cost** – Replace just the failed module instead of the entire Glow Plug Assembly, saving time and money



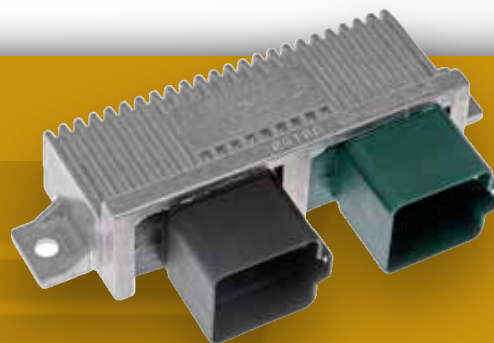
#### Failure Mode:

- Failed circuit within the module
- Glow plugs will not warm-up
- Failure results in the vehicle not starting and illumination of the check engine light



**904-304**

Dodge Sprinter 2500 2006-03,  
Dodge Sprinter 3500 2006-03



**904-282**

Ford 2010-03, Ford 2001-00