



# UNPLUG FROM THE ORDINARY

## Re-Engineered Hybrid Batteries



- THE BROADEST COVERAGE IN THE AFTERMARKET
- \*FREE SHIPPING

DOR76300

\*Free shipping applies only to standard ground shipments within the continental United States.

**DORMAN**  
NEW SINCE 1918

# BROADEST COVERAGE IN THE AFTERMARKET

14 SKUs Covering More Than 5 Million Vehicle Applications

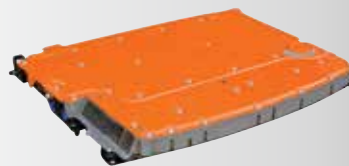
**587-015**  
Toyota Prius C 2014-12



**587-003**  
Honda Civic 2005-03



**587-002**  
Toyota Camry 2011-07



**587-013**  
Ford Escape 2009-05,  
Mercury Mariner 2009-06,  
Mazda Tribute 2009-08



**587-010**  
Nissan Altima 2011-07

## A BETTER HYBRID BATTERY SOLUTION

Dorman's hybrid batteries are more than a direct OE replacement. Our hybrid program includes all of the following improvements:

- Warranty – 12 months from the date of installation (unlimited mileage)
- Plug-and-play Design– arrives ready-to-install, no programming required
- Engineered Design – upgraded nickel-plated bus bars to reduce corrosion (Toyota applications only)
- \*Free Shipping – freight is pre-paid (both ways)

\*Free shipping applies only to standard ground shipments within the continental United States.

## OTHER HYBRID CAR PARTS COVERAGE



**Drive Motor Inverters**



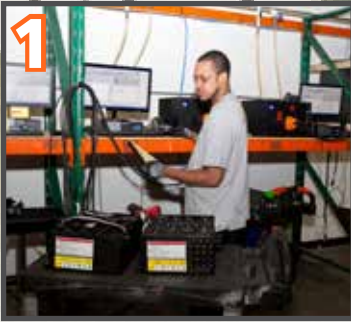
**Coolant Pumps**



**Inverter Coolers**

# UPGRADED 53,000 SQ. FT. HYBRID BATTERY FACILITY

To better serve the surging demand for hybrid batteries!



Dorman has made significant enhancements in key areas:

- Investments in new equipment and processes
  1. Doubled the amount of end-of-line testing machines
  2. Dedicated quality control staff
  3. Implementation of new build verification stations
  4. Automated in-process reporting and monitoring
- New and expanded hybrid production facility that has full scalability to support future demand

## HYBRID VEHICLE FACTS

Industry experts believe that by the year 2020, one in five vehicles sold worldwide are expected to be powered by a hybrid powertrain\*

**ARE YOU READY FOR  
THIS GROWING MARKET?**

\*Future Market Insights



New shipping area tripled in size from old facility



Upgraded final assembly area



Pre-production prep area to facilitate faster core processing

## OTHER HYBRID CAR PARTS COVERAGE



Coolant Reservoirs



Service Plugs



Battery Cooling Fan

## MARKET LEADING COVERAGE

	Dorman #	Vehicle Application
	587-013	Ford Escape 2009-05, Mazda Tribute 2010-08, Mercury Mariner 2009-06
	587-006	Honda Accord 2007-05
	587-003	Honda Civic 2005-03
	587-004	Honda Civic 2011-06
	587-009	Honda CR-Z 2012-11, Honda Insight 2014-10
	587-005	Honda Insight 2006-00
	587-007	Lexus CT200h 2013-11, Toyota Prius 2013-09, Toyota Prius V 2013-12
	587-016	Lexus ES300h 2013, Toyota Avalon 2014-13, Toyota Camry 2014-12
	587-030	Lexus RX400h 2007-06, Toyota Highlander 2007-06
	587-010	Nissan Altima 2011-07
	587-002	Toyota Camry 2011-07
	587-000	Toyota Prius 2003-01
	587-001	Toyota Prius 2009-04
	587-015	Toyota Prius C 2014-12

### COVERAGE FOR THE MOST POPULAR HYBRID VEHICLES ON THE ROAD TODAY!



**NEW!**

**587-015**  
Toyota Prius C 2014-12



**NEW!**

**587-030**  
Lexus RX400h 2008-06,  
Toyota Highlander 2010-06



**587-001**  
Toyota Prius 2009-04



#### ALL DORMAN HYBRID DRIVE BATTERY PACKS ARE:

- Ready-to-install direct replacements – no programming required!
- Re-engineered with upgraded materials (where possible)
- Completely remanufactured and tested

#### A BETTER HYBRID BATTERY SOLUTION

Typical OE Dealer or Niche Battery Provider	Dorman OE Solutions Hybrid Program
Spotty availability and coverage, generally confined to one vehicle make	Broad offering of the most popular hybrid makes and models on the road today
Typically original equipment batteries have very high replacement costs	Priced competitively to the OE Dealer and current specialty replacement alternatives
In some cases, time must be spent removing and reusing parts (such as ECU module) from the old battery and installing them onto the replacement battery	Direct replacement program that arrives ready to install ('plug and play')
On certain applications, additional time and expensive programming tools are required to reprogram replacement modules	No programming required, replacement battery arrives ready-to-install right out of the box
Copper bus bars commonly used, leading to frequent corrosion and eventual battery failure	For Toyota applications, bus bars upgraded to nickel plating to reduce corrosion



### TOYOTA APPLICATIONS

Dorman Engineered: Bus bars are upgraded to nickel plating to reduce corrosion.



**587-000**  
Toyota Prius 2003-01  
VIO: 43,000



**587-001**  
Toyota Prius 2009-04  
VIO: 623,000



**587-002**  
Toyota Camry 2011-07  
VIO: 158,000



**587-007**  
Toyota Prius 2013-09,  
Lexus CT200H 2013-11  
VIO: 840,000

**NEW!**



**587-015**  
Toyota Prius C 2014-12  
VIO: 122,454

**NEW!**



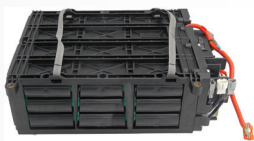
**587-016**  
Lexus ES300h 2013, Toyota Avalon 2014-13,  
Toyota Camry 2014-12  
VIO: 177,266

**NEW!**

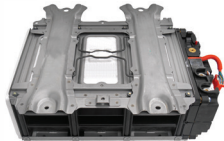


**587-030**  
Lexus RX400h 2008-06, Toyota Highlander 2010-06  
VIO: 580,854

### HONDA APPLICATIONS



**587-003**  
Honda Civic 2005-03  
VIO: 72,000



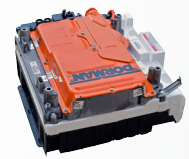
**587-004**  
Honda Civic 2011-06  
VIO: 117,000



**587-005**  
Honda Insight 2006-00  
VIO: 11,000



**587-006**  
Honda Accord 2007-05  
VIO: 25,000



**587-009**  
Honda CR-Z 2012-11,  
Honda Insight 2014-10  
VIO: 89,727

### NISSAN APPLICATIONS



**587-010**  
Nissan Altima 2011-07  
VIO: 34,000

### FORD APPLICATIONS



**587-013**  
Ford Escape 2009-05, Mercury Mariner 2009-06, Mazda Tribute 2009-08  
VIO: 89,000

Safety is an important concern when working with the electrical systems of hybrid vehicles, particularly when removing and installing hybrid vehicle batteries. Because of the high voltage that the batteries generate, removing and installing hybrid batteries is an inherently dangerous activity and can lead to serious or even fatal injuries. Suitable training is essential before removing, installing, or servicing this product which should only be attempted by a qualified technician.

NEW PRODUCTS • NEW OPPORTUNITIES • NEW SOLUTIONS





## DORMAN HYBRID BATTERY FREIGHT POLICY

The following standard freight policy applies to all Dorman Hybrid Battery shipments from its remanufacturing facility and for the core returns.

**NOTE: Hybrid Batteries are not shipped outside the Continental US & Canada.**

### **Free standard shipping within the continental US & Canada**

- Shipments < 150 lbs are shipped FedEx Ground
- Shipments > 150 lbs are shipped Conway Freight

### **Flat Rate Expedited Shipping within Continental US only available for a surcharge at customer's expense for battery shipments < 150 lbs**

Available for 587-001, 587-003, 587-004, 587-005, 587-006, and 587-007 single battery shipments

- Standard Overnight
- 2 Day:

### **Flat Rate Freight Shipments to residential addresses in the continental US available for a surcharge at customer's expense for battery shipments > 150 lbs**

- Residential Freight

### **Exceptions to the Free Standard Shipping Policy:**

***NO Free Standard shipping to residential addresses for battery orders weighing over 150lbs***

- Freight shipments to residential address incur additional "residential delivery" and "Lift Gate" charges that exceed the free shipping policy limits. Free standard freight shipments can only be made to commercial addresses.





## DORMAN HYBRID BATTERY FREIGHT POLICY

- See Flat Rate Freight Shipments to residential addresses above for alternative freight shipping options to these locations.

### **Transportation regulations for Land and Air transport in the continental US & Canada:**

Not regulated for transport by motor vehicle or rail. Conforms to DOT Hazardous Materials Regulations Special Provision 130. Battery, dry, sealed, n.o.s.

Not Restricted for air transport, complies with IATA Special Provision A199







## Hybrid Drive Battery Core Return Policies and Procedures

- Core must be complete and returned in its original box.
- Core must be the same part type and application as the purchased replacement unit.
- Core must be returned in the same packaging it was shipped in
- All cores must be written up on a separate RGA from other types of returns. The RGA must be attached to the return. Contact Customer Service at the number listed below to obtain your RGA number and arrange for core pickup.
- Core returns are paid for by Dorman Products
- Please call Dorman Customer Service for authorization before shipping via any other method than the one originally provided by Dorman. Only shipments arranged by Dorman will be paid for by Dorman. Customer assumes all responsibility for shipments arranged for by anyone other than Dorman (please note that FedEx Freight is not the same as FedEx Ground)
- If the pickup driver refuses to pick a battery up for any reason, please contact Dorman Customer Service and they will contact the carrier to get the issue resolved
- All cores must be shipped separately from all other returns to the address listed below. 'CORE RETURN' must be clearly marked on the paperwork. 20% restocking fee applies for all battery returns inaccurately or inadvertently ordered
- Core **MUST** be accompanied by the core return packing slip (RGA paperwork)
- Do not write on the shipping container. Remove all original shipping labels and bills of lading from outside of shipping container.
- Cores are only eligible for return on purchases made during the previous 24 months. The quantity of cores credited cannot exceed the quantity of units purchased.
- Core Credit will only be issued to the returning account holder once the core is received and inspected.
- Core credit will be issued at the published price in effect on the date that the FG was invoiced.
- Cores can be either returned directly from the store initiating the sale or from the DC. Customer preference should dictate where the core is returned from.

### **NO CORE CREDIT WILL BE ISSUED IF:**

- **Core is not returned in the original shipping container**
- **The core being returned does not match the part that was shipped, i.e., the core must be the same part type and application as the purchased replacement part.**
- **All the same components included with the purchased unit are not included with the core being returned.**