

INSTALL/REMOVAL INSTRUCTIONS: WINDOW REGULATOR

ATTENTION: Refer to the appropriate shop manual for your vehicle to obtain specific service procedures for this part. If you do not have a service manual or lack the skill to install this part, it is recommended that you seek the services of a qualified technician. Pay special attention to all cautions and warnings included in the shop manual. Read and follow all instructions carefully.

REMOVAL/INSTALL OF WINDOW REGULATOR (740-822) Chevrolet Malibu 1997–2003, Chevrolet Malibu Classic 2004–05, Oldsmobile Cutlass 1997–99

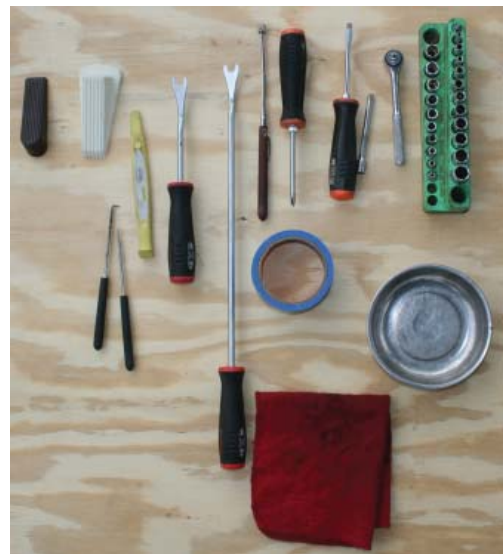
General Tech Tips:

- Use painter's tape rather than duct tape to secure window. It will not damage paint or leave sticky residue.
- A plastic pry tool is useful. It will not easily damage delicate trim like a screwdriver or metal pry bar.
- The replacement regulator should have a liberal amount of grease on slide area. If there is not much grease present, white lithium grease works well to lubricate the slide area.
- Aftermarket window tinting can cause the window to travel slower and put additional strain on the window regulator assembly.
- Window run channels should be cleaned and lubricated before installation of a new window regulator assembly. Silicone spray works well.

**PLEASE WEAR SAFETY
GLASSES!**

Tools required for removal and installation of window regulator and motor assembly:

- **Silicone spray lubricant**
- **Trim panel removal tool**
- **Pick**
- **Saddle cup assembly, tape or wedge to hold window in place**
- **Flat-blade screwdriver or plastic pry tool**
- **10 mm socket or driver**
- **Phillips screwdriver**
- **Grease pencil or marker**
- **8 mm socket**



INSTALL/REMOVAL INSTRUCTIONS: WINDOW REGULATOR

ATTENTION: Refer to the appropriate shop manual for your vehicle to obtain specific service procedures for this part. If you do not have a service manual or lack the skill to install this part, it is recommended that you seek the services of a qualified technician. Pay special attention to all cautions and warnings included in the shop manual. Read and follow all instructions carefully.

Removal Instructions

STEP 1: Using a trim panel removal tool, remove the rear view mirror bezel.



STEP 2: Remove the Phillips head screw attaching the interior door handle bezel assembly to the door.



INSTALL/REMOVAL INSTRUCTIONS: WINDOW REGULATOR

ATTENTION: Refer to the appropriate shop manual for your vehicle to obtain specific service procedures for this part. If you do not have a service manual or lack the skill to install this part, it is recommended that you seek the services of a qualified technician. Pay special attention to all cautions and warnings included in the shop manual. Read and follow all instructions carefully.

STEP 3: Disconnect the power door lock switch.



STEP 4: Using a pic or small flat-blade screwdriver remove the interior door trim panel attaching screw cover.



INSTALL/REMOVAL INSTRUCTIONS: WINDOW REGULATOR

ATTENTION: Refer to the appropriate shop manual for your vehicle to obtain specific service procedures for this part. If you do not have a service manual or lack the skill to install this part, it is recommended that you seek the services of a qualified technician. Pay special attention to all cautions and warnings included in the shop manual. Read and follow all instructions carefully.

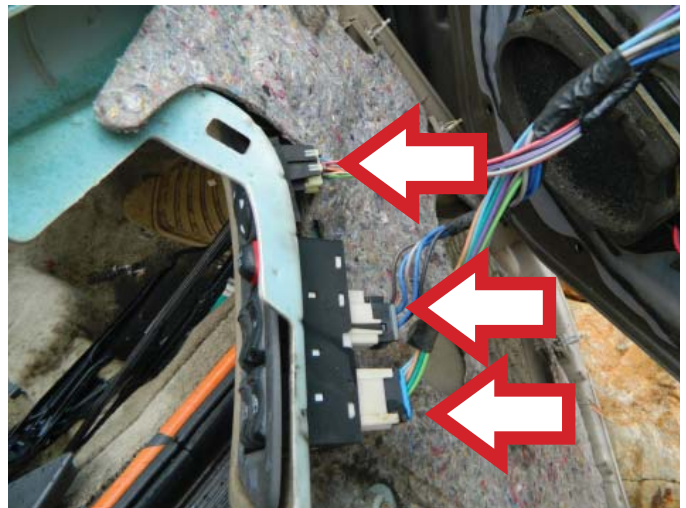
STEP 5: Using an 8 mm socket remove the door trim panel attaching screws.



STEP 6: Using a trim panel removal tool, remove the interior door trim panel. **NOTE:** You may want to use a plastic trim panel tool to prevent scratching the painted surface.



STEP 7: With the interior door trim panel removed from the door, disconnect the master power switch assembly. **NOTE:** The switch connectors may vary.

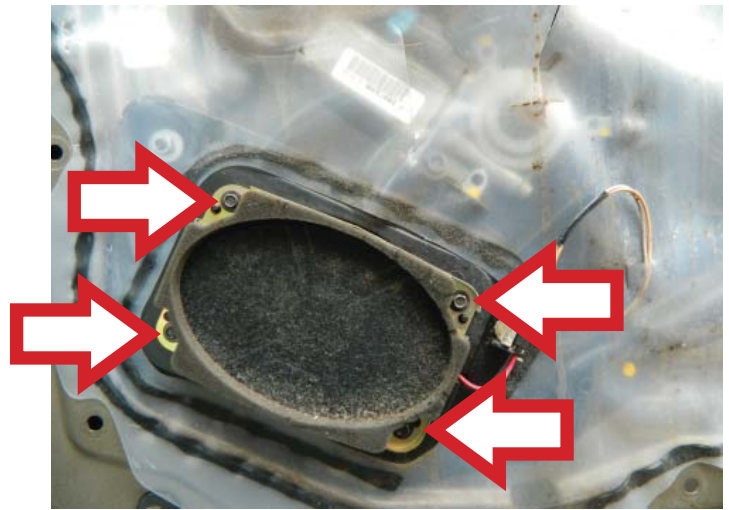


INSTALL/REMOVAL INSTRUCTIONS: WINDOW REGULATOR

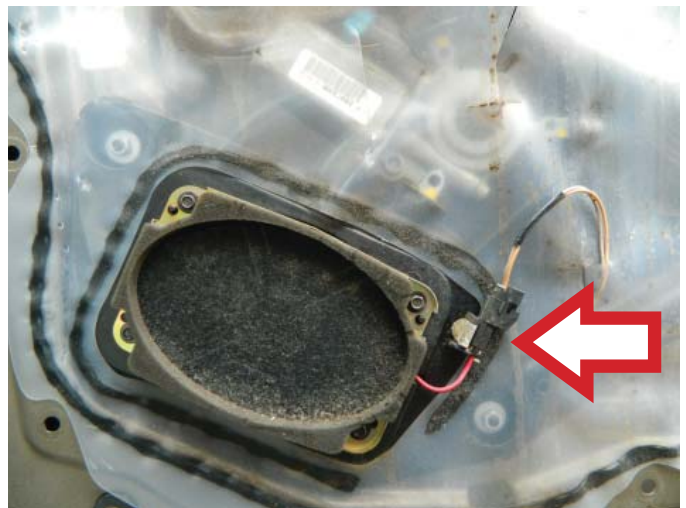
ATTENTION: Refer to the appropriate shop manual for your vehicle to obtain specific service procedures for this part. If you do not have a service manual or lack the skill to install this part, it is recommended that you seek the services of a qualified technician. Pay special attention to all cautions and warnings included in the shop manual. Read and follow all instructions carefully.

STEP 8: Remove the interior door trim panel.

STEP 9: Remove the four (4) door speaker attaching screws.



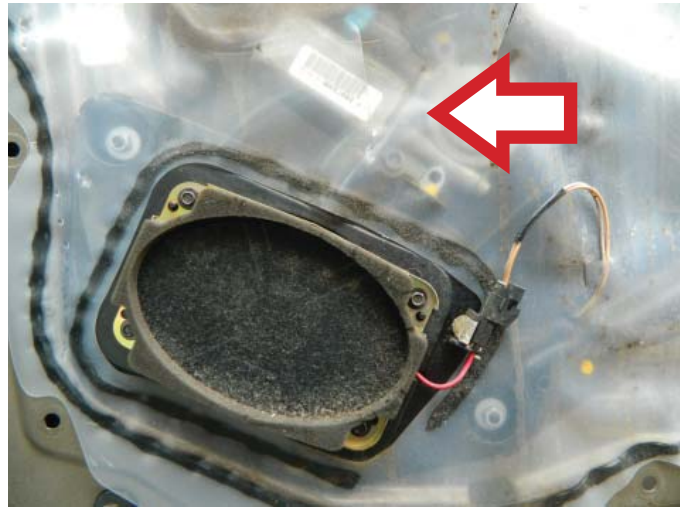
STEP 10: Disconnect the door speaker.



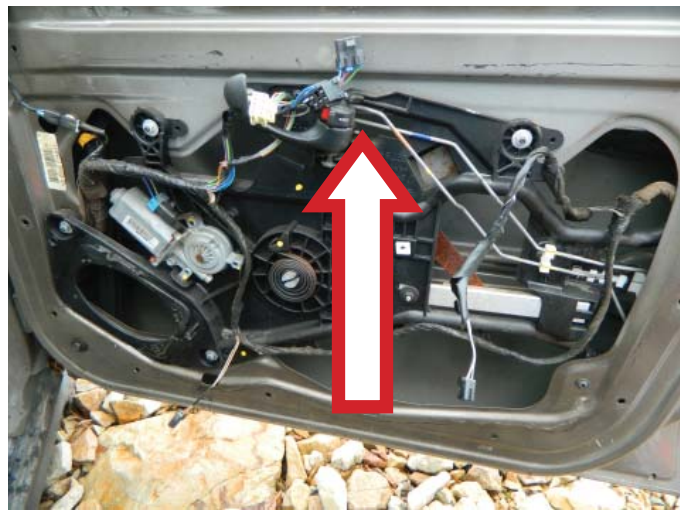
INSTALL/REMOVAL INSTRUCTIONS: WINDOW REGULATOR

ATTENTION: Refer to the appropriate shop manual for your vehicle to obtain specific service procedures for this part. If you do not have a service manual or lack the skill to install this part, it is recommended that you seek the services of a qualified technician. Pay special attention to all cautions and warnings included in the shop manual. Read and follow all instructions carefully.

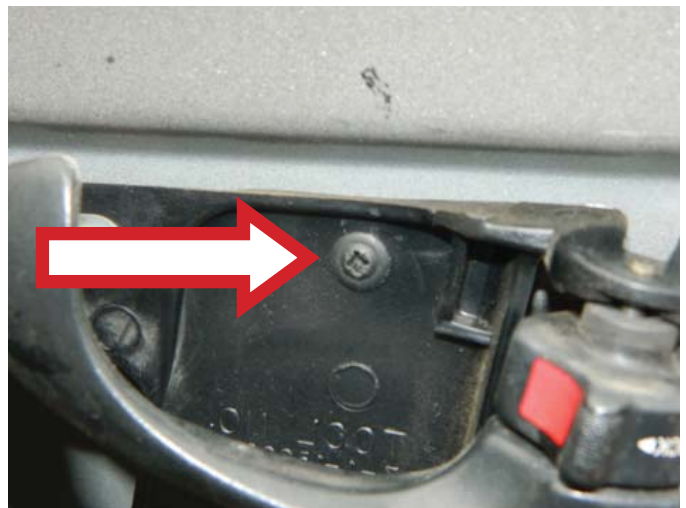
STEP 11: Once the door speaker has been removed, remove the water vapor barrier.



STEP 12: Disconnect the interior door handle latch rods from the interior door handle.



STEP 13: Remove the Phillips head screw that holds the interior door handle assembly onto the door.



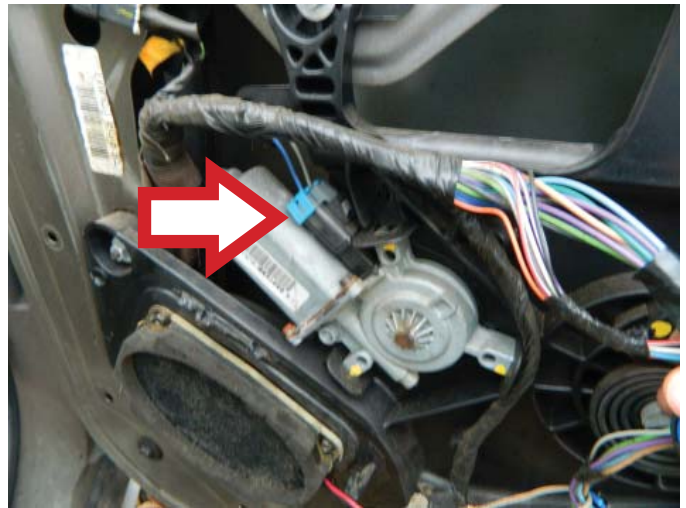
INSTALL/REMOVAL INSTRUCTIONS: WINDOW REGULATOR

ATTENTION: Refer to the appropriate shop manual for your vehicle to obtain specific service procedures for this part. If you do not have a service manual or lack the skill to install this part, it is recommended that you seek the services of a qualified technician. Pay special attention to all cautions and warnings included in the shop manual. Read and follow all instructions carefully.

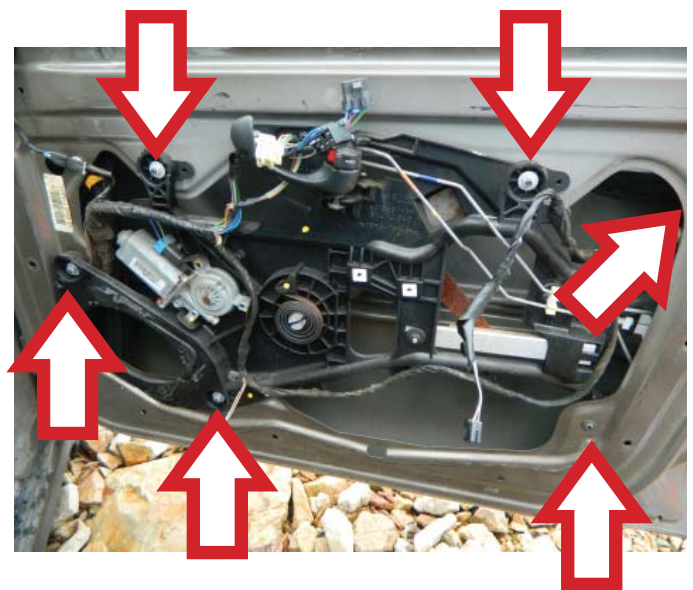
STEP 14: Temporarily connect the power window switch to lower the door glass to expose the two (2) door glass attaching bolts.

STEP 14a: Once the door glass is disconnected from the window regulator, slide the door glass into the up position and hold in place with either a saddle cup assembly, tape, or wedge.

STEP 14b: Disconnect the window lift motor.



STEP 15: Remove the window regulator assembly attaching screws.



INSTALL/REMOVAL INSTRUCTIONS: WINDOW REGULATOR

ATTENTION: Refer to the appropriate shop manual for your vehicle to obtain specific service procedures for this part. If you do not have a service manual or lack the skill to install this part, it is recommended that you seek the services of a qualified technician. Pay special attention to all cautions and warnings included in the shop manual. Read and follow all instructions carefully.

STEP 16: With the window regulator assembly removed, remove the three (3) window lift motor attaching screws. **NOTE:** BE VERY CAREFUL WHEN REMOVING THE WINDOW LIFT MOTOR. THE PRE TENSIONER SPRING IS UNDER PRESSURE AND CAN INFLICT BODILY INJURY IF EXTREME CAUTION IS NOT USED.

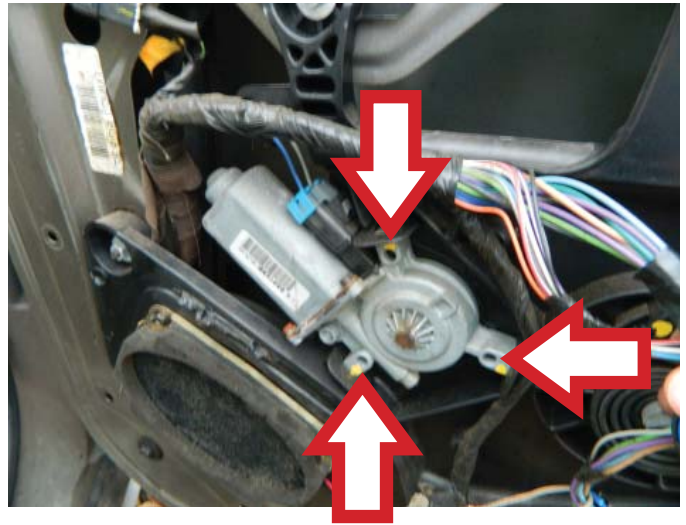
INSTALL/REMOVAL INSTRUCTIONS: WINDOW REGULATOR

ATTENTION: Refer to the appropriate shop manual for your vehicle to obtain specific service procedures for this part. If you do not have a service manual or lack the skill to install this part, it is recommended that you seek the services of a qualified technician. Pay special attention to all cautions and warnings included in the shop manual. Read and follow all instructions carefully.

Installation Instructions

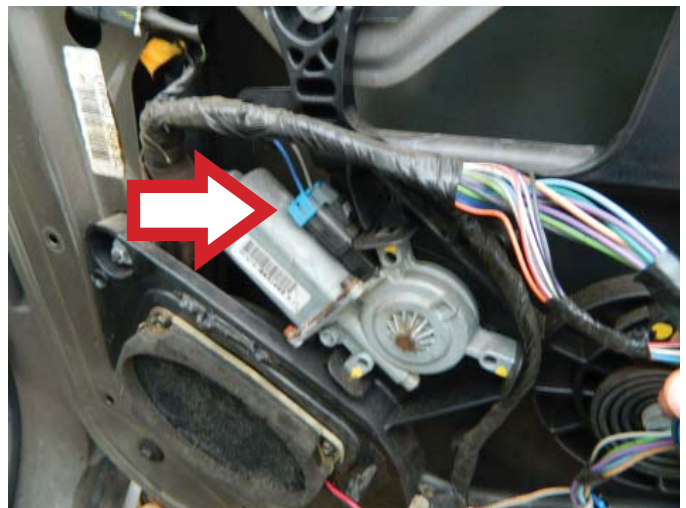
STEP 1: Install the window regulator onto the plastic panel assembly.

STEP 2: Attach the three (3) window lift motor attaching screws to the window lift motor.



STEP 3: Install the window regulator assembly onto the door.

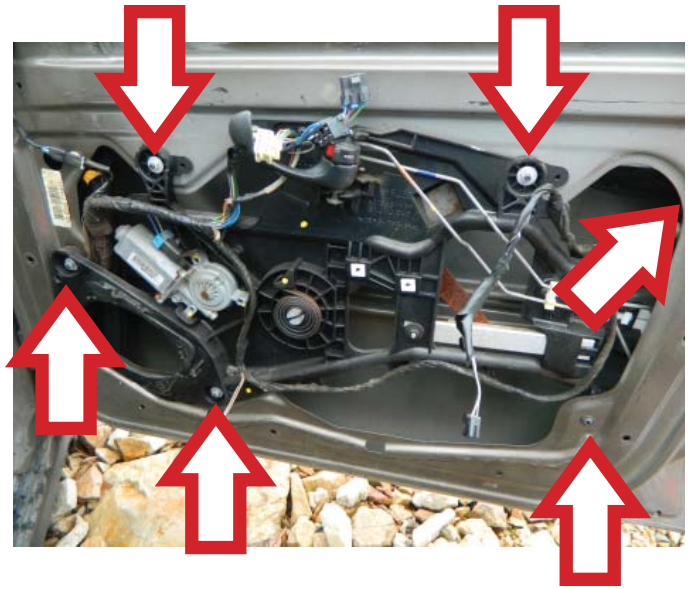
STEP 3a: Connect the window lift motor.



INSTALL/REMOVAL INSTRUCTIONS: WINDOW REGULATOR

ATTENTION: Refer to the appropriate shop manual for your vehicle to obtain specific service procedures for this part. If you do not have a service manual or lack the skill to install this part, it is recommended that you seek the services of a qualified technician. Pay special attention to all cautions and warnings included in the shop manual. Read and follow all instructions carefully.

STEP 3b: Attach the window regulator assembly attaching screws.



STEP 4: Temporarily install the master power switch assembly to raise or lower the window regulator for the door glass attaching points.

STEP 4a: Lower the door glass into position and attach to the window regulator.

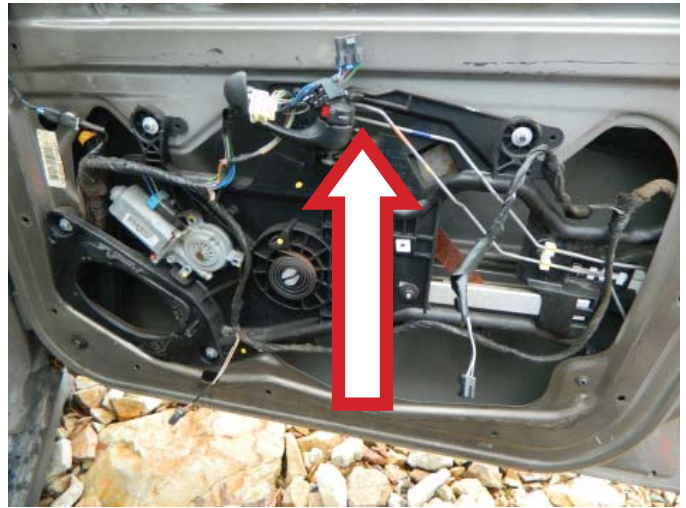
STEP 5: Install the interior door handle.



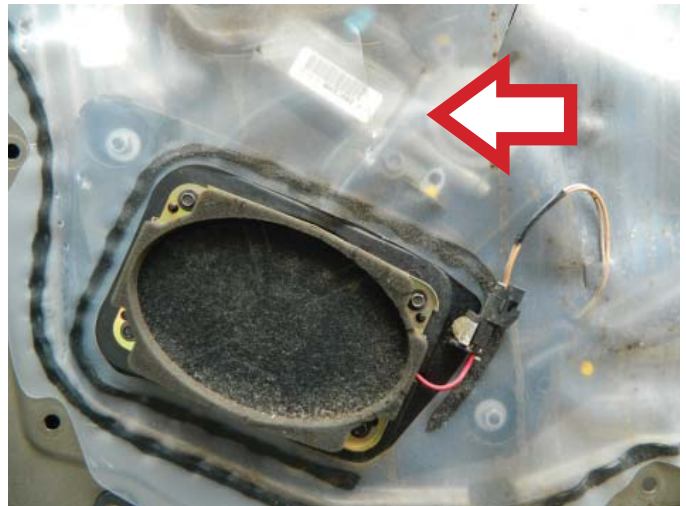
INSTALL/REMOVAL INSTRUCTIONS: WINDOW REGULATOR

ATTENTION: Refer to the appropriate shop manual for your vehicle to obtain specific service procedures for this part. If you do not have a service manual or lack the skill to install this part, it is recommended that you seek the services of a qualified technician. Pay special attention to all cautions and warnings included in the shop manual. Read and follow all instructions carefully.

STEP 5a: Connect the interior door handle latch rods.



STEP 6: Attach the water vapor barrier.

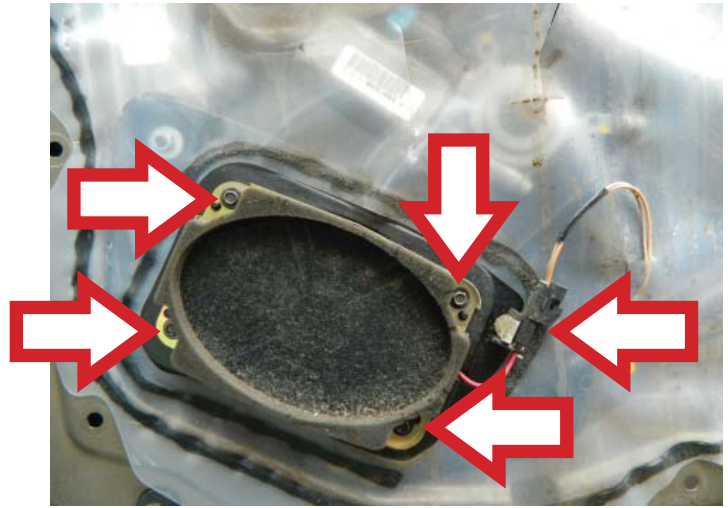


STEP 7: Install the door speaker

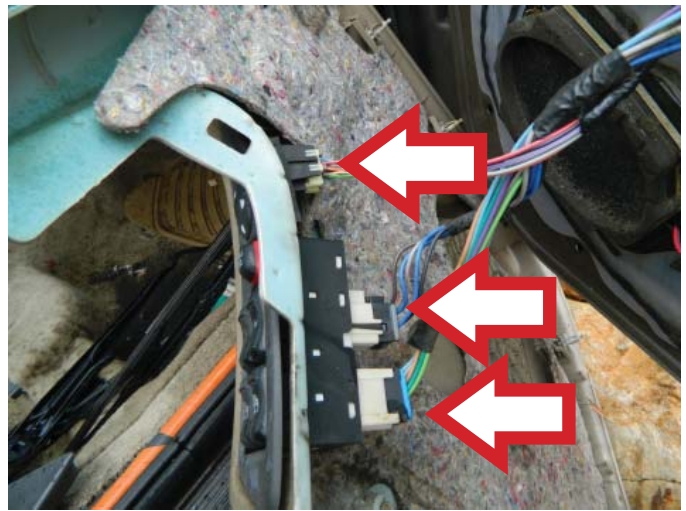
INSTALL/REMOVAL INSTRUCTIONS: WINDOW REGULATOR

ATTENTION: Refer to the appropriate shop manual for your vehicle to obtain specific service procedures for this part. If you do not have a service manual or lack the skill to install this part, it is recommended that you seek the services of a qualified technician. Pay special attention to all cautions and warnings included in the shop manual. Read and follow all instructions carefully.

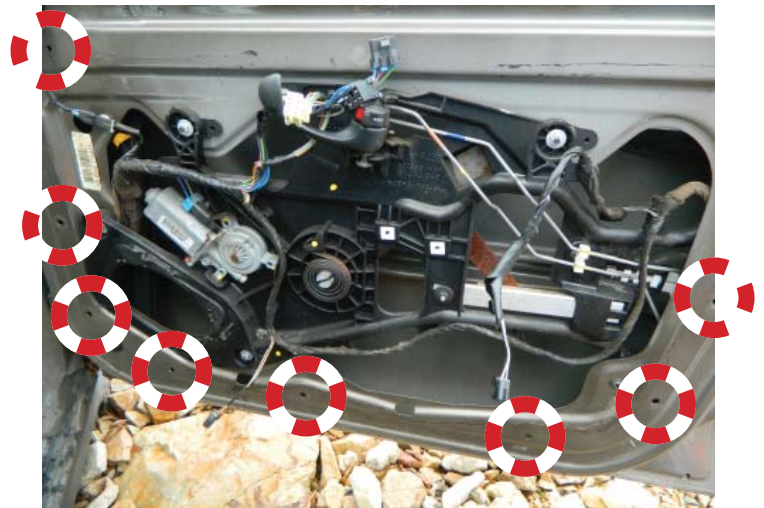
STEP 7a: Connect the door speaker.



STEP 8: Connect the master power switch assembly.



STEP 9: Align the interior door trim panel retainers with their corresponding holes and push the interior door trim panel into place.



INSTALL/REMOVAL INSTRUCTIONS: WINDOW REGULATOR

ATTENTION: Refer to the appropriate shop manual for your vehicle to obtain specific service procedures for this part. If you do not have a service manual or lack the skill to install this part, it is recommended that you seek the services of a qualified technician. Pay special attention to all cautions and warnings included in the shop manual. Read and follow all instructions carefully.

STEP 10: Attach the interior door trim panel retaining screws.



STEP 11: Install the interior door trim panel attaching screw cover.



STEP 12: Connect the power door lock switch.



INSTALL/REMOVAL INSTRUCTIONS: WINDOW REGULATOR

ATTENTION: Refer to the appropriate shop manual for your vehicle to obtain specific service procedures for this part. If you do not have a service manual or lack the skill to install this part, it is recommended that you seek the services of a qualified technician. Pay special attention to all cautions and warnings included in the shop manual. Read and follow all instructions carefully.

STEP 12a: Install the interior door handle bezel assembly.



STEP 14: Verify that the window regulator is operating properly and that all of the interior door trim panels retainers are installed.



STEP 13: Install the rear view mirror bezel assembly.



STEP 14: Verify that the window regulator is operating properly and that all of the interior door trim panels retainers are installed.