

# INSTALL/REMOVAL INSTRUCTIONS: WINDOW REGULATOR

**ATTENTION:** Refer to the appropriate shop manual for your vehicle to obtain specific service procedures for this part. If you do not have a service manual or lack the skill to install this part, it is recommended that you seek the services of a qualified technician. Pay special attention to all cautions and warnings included in the shop manual. Read and follow all instructions carefully.

## REMOVAL/INSTALL OF WINDOW REGULATOR (740-777) Nissan Sentra 1995–99

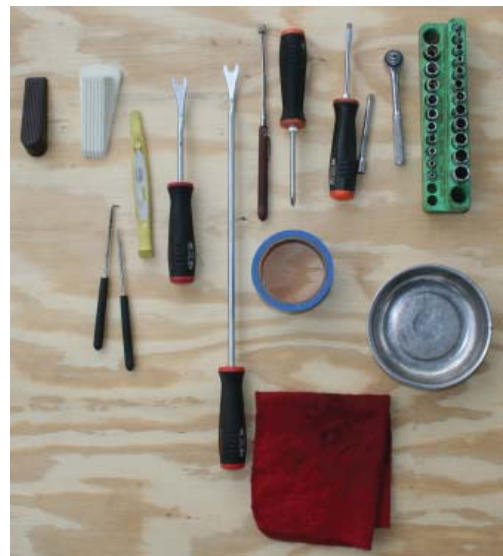
### General Tech Tips:

- Use painter's tape rather than duct tape to secure window. It will not damage paint or leave sticky residue.
- A plastic pry tool is useful. It will not easily damage delicate trim like a screwdriver or metal pry bar.
- The replacement regulator should have a liberal amount of grease on slide area. If there is not much grease present, white lithium grease works well to lubricate the slide area.
- Aftermarket window tinting can cause the window to travel slower and put additional strain on the window regulator assembly.
- Window run channels should be cleaned and lubricated before installation of a new window regulator assembly. Silicone spray works well.

**PLEASE WEAR SAFETY  
GLASSES!**

### Tools required for removal and installation of window regulator and motor assembly:

- **Silicone spray lubricant**
- **Trim panel removal tool**
- **Pick**
- **Saddle cup assembly, tape, or wedge to hold window in place**
- **Flat-blade screwdriver or plastic pry tool**
- **10mm socket or driver**
- **Phillips screwdriver**
- **Grease pencil or marker**



# INSTALL/REMOVAL INSTRUCTIONS: WINDOW REGULATOR

**ATTENTION:** Refer to the appropriate shop manual for your vehicle to obtain specific service procedures for this part. If you do not have a service manual or lack the skill to install this part, it is recommended that you seek the services of a qualified technician. Pay special attention to all cautions and warnings included in the shop manual. Read and follow all instructions carefully.

## Removal Instructions

**STEP 1:** Using a trim panel removal tool, remove the screw covers that retain the interior door trim panel.



**STEP 1a:** Remove the door cup handle retaining screw.



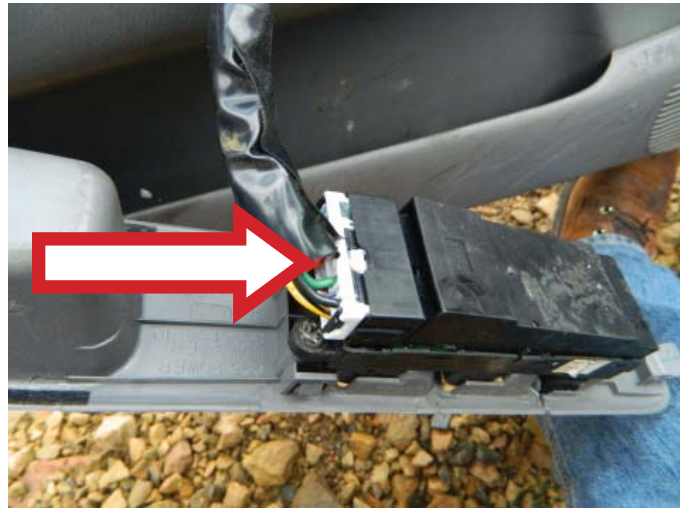
**STEP 2:** Using a trim panel removal tool, remove the master door switch assembly.



# INSTALL/REMOVAL INSTRUCTIONS: WINDOW REGULATOR

**ATTENTION:** Refer to the appropriate shop manual for your vehicle to obtain specific service procedures for this part. If you do not have a service manual or lack the skill to install this part, it is recommended that you seek the services of a qualified technician. Pay special attention to all cautions and warnings included in the shop manual. Read and follow all instructions carefully.

**STEP 3:** Disconnect the master door switch assembly.



**STEP 4:** Using either a trim panel removal tool or small flat-blade screwdriver, remove the interior door handle bezel assembly.



**STEP 2:** Using a trim panel removal tool, place the tool between the door and the interior door trim panel and using firm, even pressure release the interior door trim panel from the door.



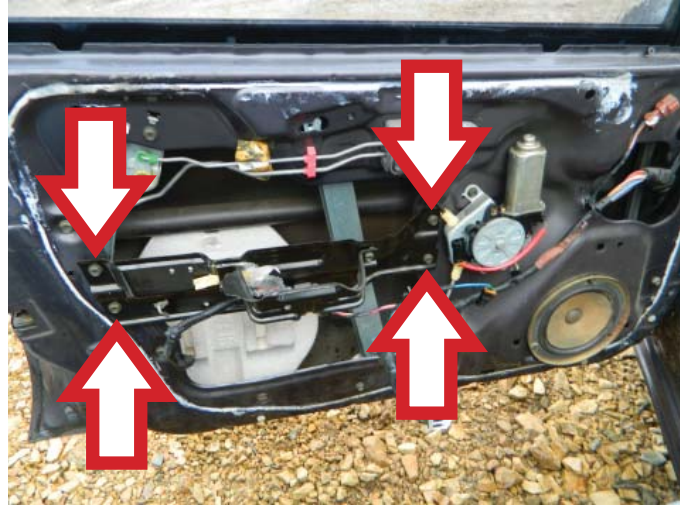
# INSTALL/REMOVAL INSTRUCTIONS: WINDOW REGULATOR

**ATTENTION:** Refer to the appropriate shop manual for your vehicle to obtain specific service procedures for this part. If you do not have a service manual or lack the skill to install this part, it is recommended that you seek the services of a qualified technician. Pay special attention to all cautions and warnings included in the shop manual. Read and follow all instructions carefully.

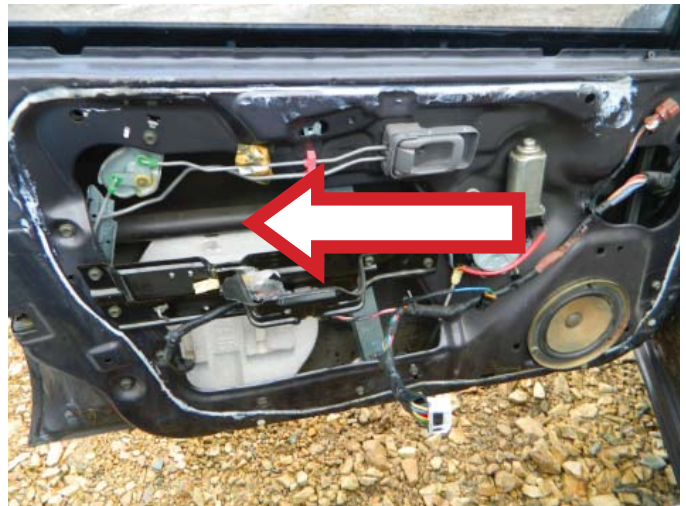
**STEP 6:** To remove the interior door trim panel, pull the interior door trim panel toward you and lift in an upward motion.

**STEP 6a:** Remove the water vapor barrier.

**STEP 7:** Using a Phillips head screwdriver, remove the interior door trim panel support bracket.



**STEP 8:** Temporarily install the master door switch to lower the window glass, exposing the window glass to window regulator attaching screws. **NOTE:** There are two (2) screws that attach the door glass to the window regulator.

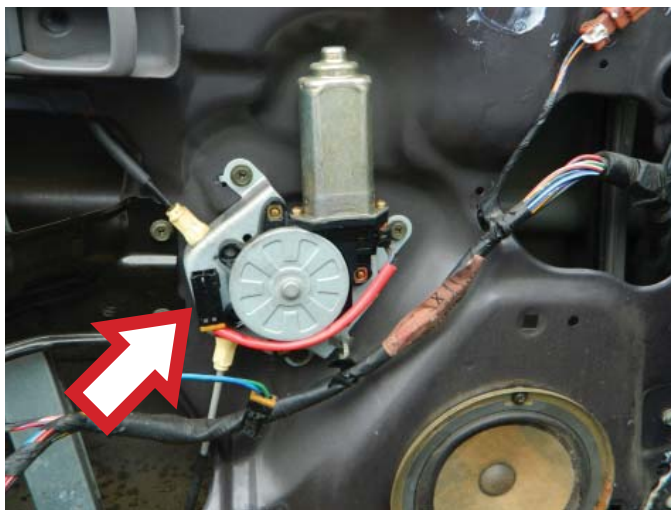


**STEP 9:** Once the window glass has been disconnected from the window regulator, manually slide the window glass into the closed position and hold in place with either a saddle cup assembly, painters tape, or a wedge.

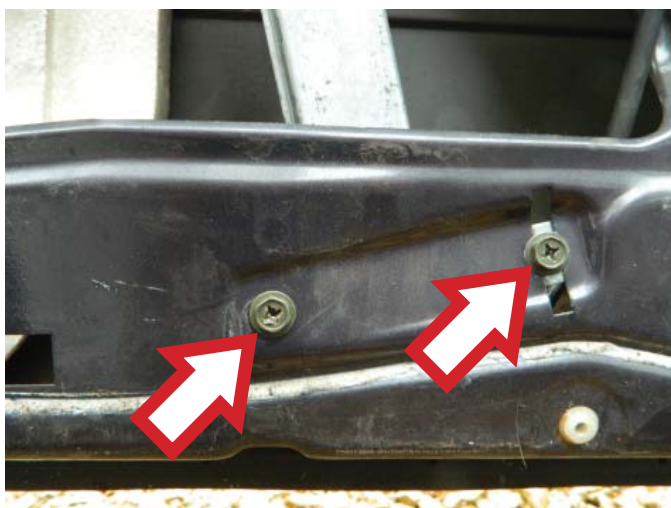
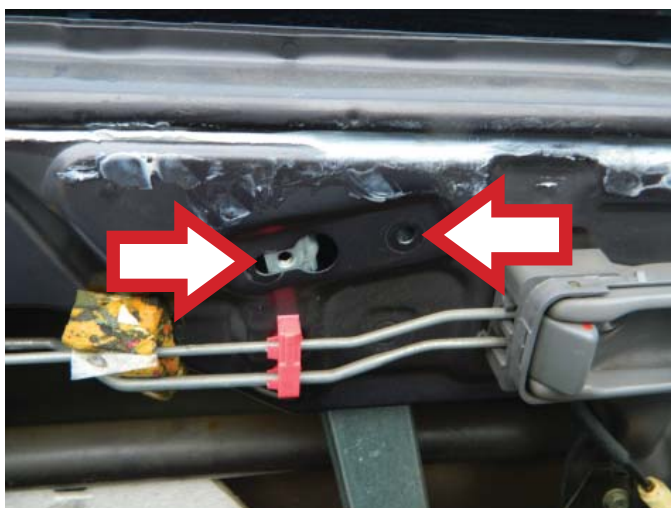
# INSTALL/REMOVAL INSTRUCTIONS: WINDOW REGULATOR

**ATTENTION:** Refer to the appropriate shop manual for your vehicle to obtain specific service procedures for this part. If you do not have a service manual or lack the skill to install this part, it is recommended that you seek the services of a qualified technician. Pay special attention to all cautions and warnings included in the shop manual. Read and follow all instructions carefully.

**STEP 10:** Disconnect the window lift motor connector.



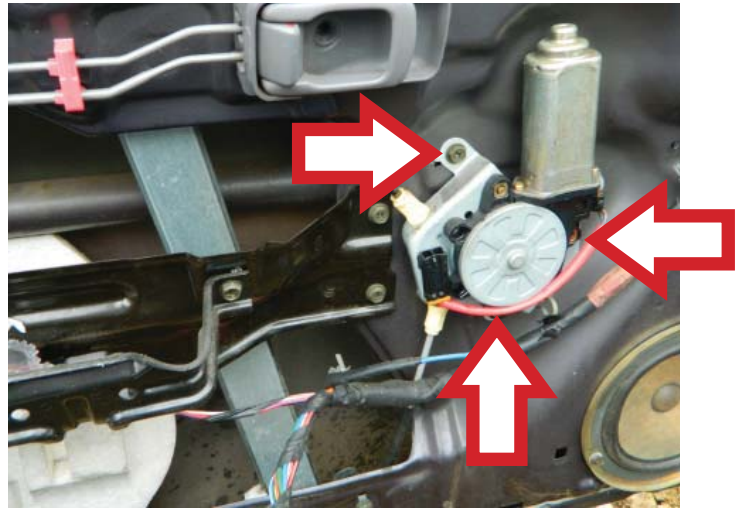
**STEP 11:** Using your ratchet with a 10 mm socket, remove the four screws that attach to the window regulator assembly.



# INSTALL/REMOVAL INSTRUCTIONS: WINDOW REGULATOR

**ATTENTION:** Refer to the appropriate shop manual for your vehicle to obtain specific service procedures for this part. If you do not have a service manual or lack the skill to install this part, it is recommended that you seek the services of a qualified technician. Pay special attention to all cautions and warnings included in the shop manual. Read and follow all instructions carefully.

**STEP 12:** Using your ratchet with a 10 mm socket, remove the three window lift motor attaching hardware screws.



**STEP 13:** Remove the window regulator assembly through the main access hole.  
**NOTE:** At this point, your interior door trim panel reinforcement bracket would be removed.



**STEP 14:** Remove the three (3) window lift motor attaching screws.

# INSTALL/REMOVAL INSTRUCTIONS: WINDOW REGULATOR

**ATTENTION:** Refer to the appropriate shop manual for your vehicle to obtain specific service procedures for this part. If you do not have a service manual or lack the skill to install this part, it is recommended that you seek the services of a qualified technician. Pay special attention to all cautions and warnings included in the shop manual. Read and follow all instructions carefully.

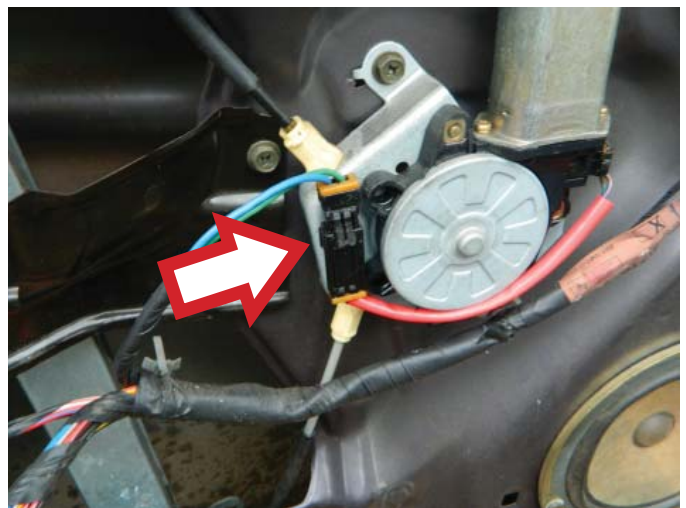
## Installation Instructions

**STEP 1:** Attach the three (3) window lift motor attaching screws.

**STEP 1a:** Place the window regulator through the main access hole. Once the window regulator assembly is placed into position, loosely mount the window regulator assembly with its attaching hardware.



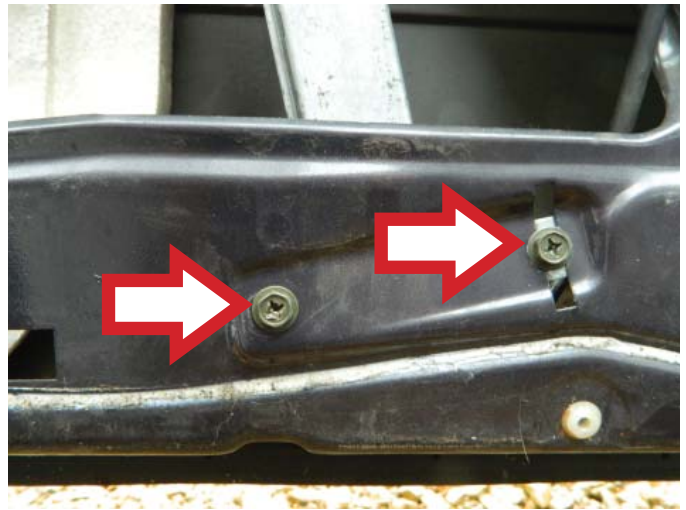
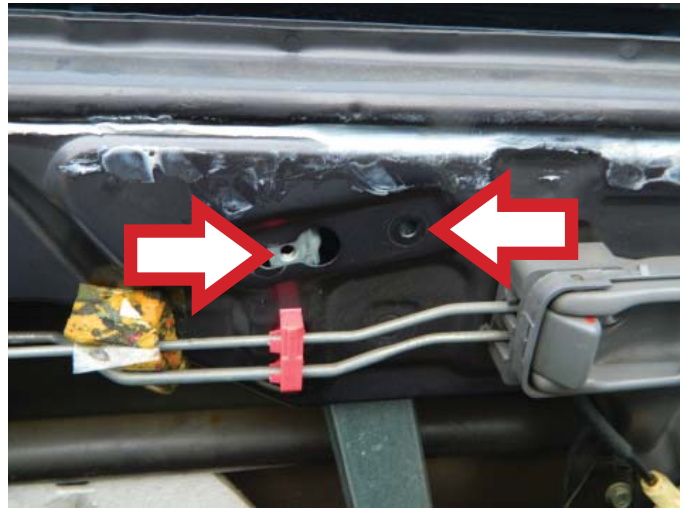
**STEP 2:** Connect the window lift motor connector.



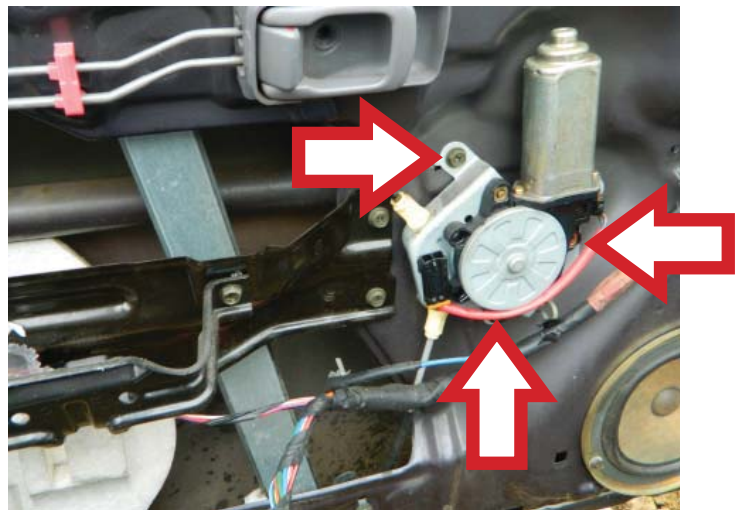
# INSTALL/REMOVAL INSTRUCTIONS: WINDOW REGULATOR

**ATTENTION:** Refer to the appropriate shop manual for your vehicle to obtain specific service procedures for this part. If you do not have a service manual or lack the skill to install this part, it is recommended that you seek the services of a qualified technician. Pay special attention to all cautions and warnings included in the shop manual. Read and follow all instructions carefully.

**STEP 3:** Using your ratchet with a 10 mm socket, tighten down the window regulator attaching hardware.



**STEP 4:** Tighten down the window lift motor attaching hardware.





# INSTALL/REMOVAL INSTRUCTIONS: WINDOW REGULATOR

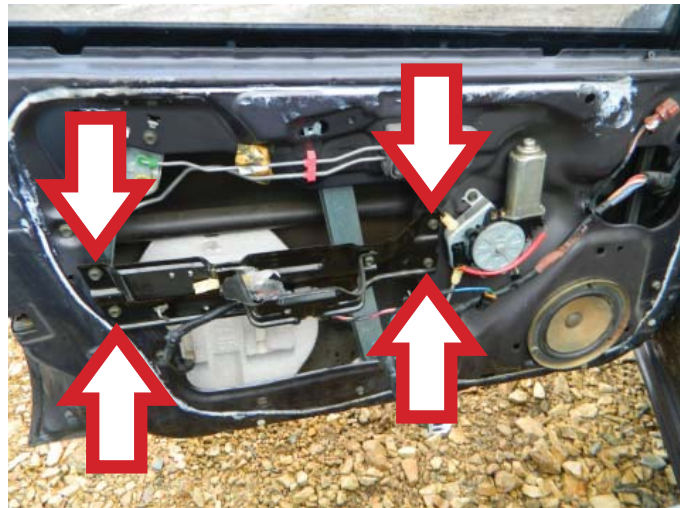
**ATTENTION:** Refer to the appropriate shop manual for your vehicle to obtain specific service procedures for this part. If you do not have a service manual or lack the skill to install this part, it is recommended that you seek the services of a qualified technician. Pay special attention to all cautions and warnings included in the shop manual. Read and follow all instructions carefully.

**STEP 5:** Manually slide the window glass onto the window regulator. **NOTE:** It may be necessary to temporarily connect the master power switch assembly to align the window glass to the window regulator.

**STEP 6:** At this point, verify that the window regulator is operating properly. Once this has been verified, disconnect the power master switch assembly.

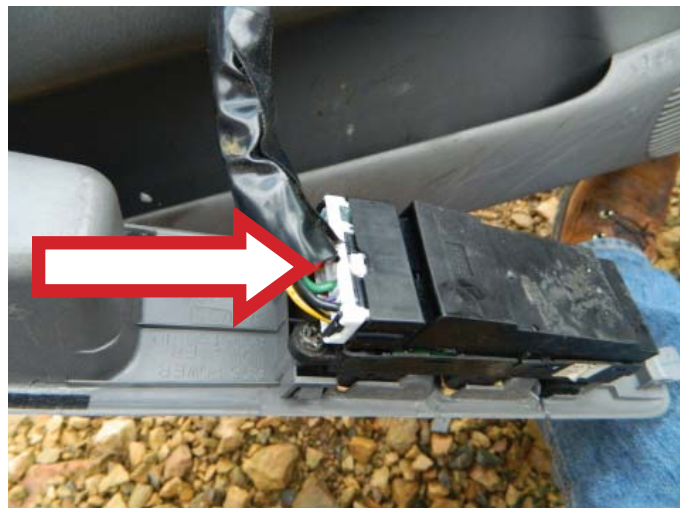
**STEP 7:** Install the water vapor barrier.

**STEP 8:** Attach the interior door trim panel reinforcement bar.



**STEP 9:** Install the interior door trim panel. **NOTE:** When installing the interior door trim panel, pull the door trim panel in a downward motion. Be sure to align the door trim panel on the lip of the door and align the interior door trim panel retaining hardware with their corresponding holes. Once everything is aligned, press the interior door trim panel into position.

**STEP 10:** Connect the power master switch connector.



# INSTALL/REMOVAL INSTRUCTIONS: WINDOW REGULATOR

**ATTENTION:** Refer to the appropriate shop manual for your vehicle to obtain specific service procedures for this part. If you do not have a service manual or lack the skill to install this part, it is recommended that you seek the services of a qualified technician. Pay special attention to all cautions and warnings included in the shop manual. Read and follow all instructions carefully.

**STEP 11:** Attach the power master switch assembly onto the interior door trim panel.



**STEP 11a:** Attach the door cup pull attaching screw.



**STEP 12:** Attach the interior door trim panel attaching screws.



# INSTALL/REMOVAL INSTRUCTIONS: WINDOW REGULATOR

**ATTENTION:** Refer to the appropriate shop manual for your vehicle to obtain specific service procedures for this part. If you do not have a service manual or lack the skill to install this part, it is recommended that you seek the services of a qualified technician. Pay special attention to all cautions and warnings included in the shop manual. Read and follow all instructions carefully.

**STEP 13:** Verify that all of the interior door trim panel attaching hardware is secure and that the window regulator is operating properly.

---

**STEP 14:** Attach the interior door handle bezel.

