

# INSTALL/REMOVAL INSTRUCTIONS: WINDOW REGULATOR

**ATTENTION:** Refer to the appropriate shop manual for your vehicle to obtain specific service procedures for this part. If you do not have a service manual or lack the skill to install this part, it is recommended that you seek the services of a qualified technician. Pay special attention to all cautions and warnings included in the shop manual. Read and follow all instructions carefully.

## REMOVAL/INSTALL OF WINDOW REGULATOR (740-756) Ford Taurus, Mercury Sable 1996–2005

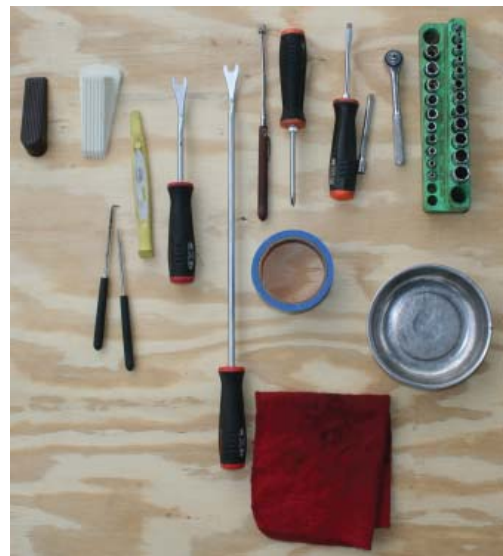
### General Tech Tips:

- Use painter's tape rather than duct tape to secure window. It will not damage paint or leave sticky residue.
- A plastic pry tool is useful. It will not easily damage delicate trim like a screwdriver or metal pry bar.
- The replacement regulator should have a liberal amount of grease on slide area. If there is not much grease present, white lithium grease works well to lubricate the slide area.
- Aftermarket window tinting can cause the window to travel slower and put additional strain on the window regulator assembly.
- Window run channels should be cleaned and lubricated before installation of a new window regulator assembly. Silicone spray works well.

### Tools required for removal and installation of window regulator and motor assembly:

- Silicone spray lubricant
- Trim panel removal tool
- Pick
- Saddle cup assembly, tape, or wedge to hold window in place
- Flat-blade screwdriver or plastic pry tool
- 10mm socket or driver
- Phillips screwdriver
- Grease pencil or marker
- 3/8" power drill
- 1/8", 3/16", and 1/4" drill bit
- Stubby Phillips head screwdriver
- Razor knife or razor blade
- Qty 8 of the following: 1/4" x 20 x 1" bolts, 1/4" x 20 nuts, 1/4" lock washers, and 1/4" flat washers
- 3/8" socket

**PLEASE WEAR SAFETY  
GLASSES!**

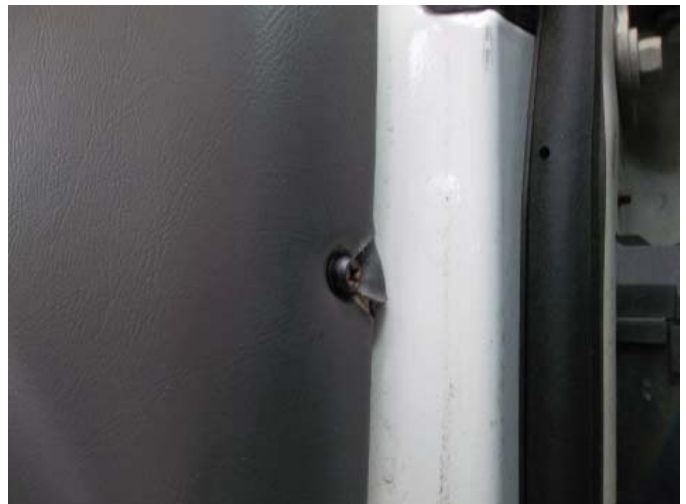


# INSTALL/REMOVAL INSTRUCTIONS: WINDOW REGULATOR

**ATTENTION:** Refer to the appropriate shop manual for your vehicle to obtain specific service procedures for this part. If you do not have a service manual or lack the skill to install this part, it is recommended that you seek the services of a qualified technician. Pay special attention to all cautions and warnings included in the shop manual. Read and follow all instructions carefully.

## Removal Instructions

**STEP 1:** Using a Phillips head screwdriver and a Stubby Phillips head screwdriver, remove the interior door trim panel retaining screws.



# INSTALL/REMOVAL INSTRUCTIONS: WINDOW REGULATOR

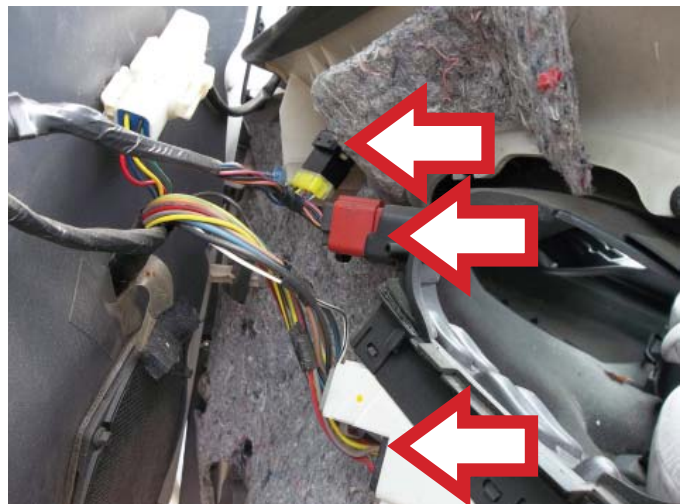
**ATTENTION:** Refer to the appropriate shop manual for your vehicle to obtain specific service procedures for this part. If you do not have a service manual or lack the skill to install this part, it is recommended that you seek the services of a qualified technician. Pay special attention to all cautions and warnings included in the shop manual. Read and follow all instructions carefully.

**STEP 2:** Using a trim panel removal tool or pick, remove the interior door handle cap assembly.



**STEP 3:** Using a trim panel removal tool, detach the interior door trim panel from the door. **NOTE:** THERE ARE INTERIOR DOOR TRIM PANEL RETAINERS EVERY TEN TO TWELVE INCHES. PLACE THE INTERIOR TRIM REMOVAL TOOL BETWEEN THE INTERIOR DOOR TRIM PANEL AND THE DOOR AND PULL THE REMOVAL TOOL TOWARD YOU TO RELEASE THE RETAINERS.

**STEP 4:** Disconnect the power switch assemblies. **NOTE:** NOT ALL VEHICLES CAME EQUIPPED WITH POWER MIRRORS. THE PHOTOS IN THIS INSTRUCTION SHEET ARE FOR ILLUSTRATION PURPOSES ONLY.



**STEP 5:** Remove the interior door trim panel.

# INSTALL/REMOVAL INSTRUCTIONS: WINDOW REGULATOR

**ATTENTION:** Refer to the appropriate shop manual for your vehicle to obtain specific service procedures for this part. If you do not have a service manual or lack the skill to install this part, it is recommended that you seek the services of a qualified technician. Pay special attention to all cautions and warnings included in the shop manual. Read and follow all instructions carefully.

**STEP 6:** Using a razor blade or a razor knife, trim the water vapor barrier around the interior door trim panel support brace.

**NOTE:** BY DOING THIS STEP YOU WILL AVOID HAVING TO DRILL OUT THE SUPPORT BRACE TO REMOVE THE WATER VAPOR BARRIER.



**STEP 7:** Using a razor knife or razor blade, trim around the door speaker. **NOTE:** THIS DOES NOT APPLY TO ALL VEHICLES. MOST WATER VAPOR BARRIERS WERE PRE-CUT FOR THE SPEAKER OPENING.



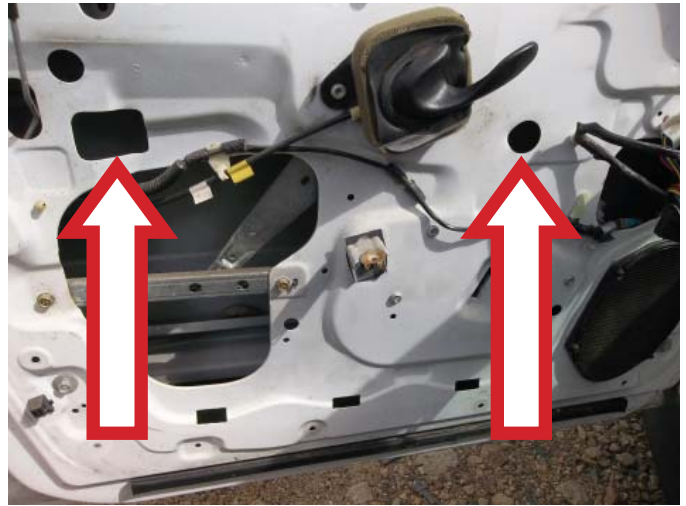
**STEP 8:** Remove the water vapor barrier.



# INSTALL/REMOVAL INSTRUCTIONS: WINDOW REGULATOR

**ATTENTION:** Refer to the appropriate shop manual for your vehicle to obtain specific service procedures for this part. If you do not have a service manual or lack the skill to install this part, it is recommended that you seek the services of a qualified technician. Pay special attention to all cautions and warnings included in the shop manual. Read and follow all instructions carefully.

**STEP 9:** Temporarily connect the power switch assembly to lower the door glass, in order to access the rivets attaching the door glass to the window regulator.



**STEP 10:** Using your 3/8" power drill and drill bits, remove the rivets attaching the door glass to the window regulator. **CAUTION:** USE EXTREME CARE WHILE DRILLING OUT THE DOOR GLASS ATTACHING RIVETS. FAILURE TO DO SO WILL RESULT IN GLASS BREAKAGE. WHILE DRILLING THE RIVETS OUT, START WITH AN 1/8" DRILL BIT, WORKING YOUR WAY UP TO A 1/4" DRILL BIT. YOU ARE ONLY DRILLING THE HEAD OF THE RIVET. DO NOT DRILL ALL OF THE WAY THROUGH THE RIVET.

**STEP 11:** Once the door glass has been separated from the window regulator, manually slide the door glass into the closed position and hold in place with either a saddle cup assembly, painters tape, or a wedge.

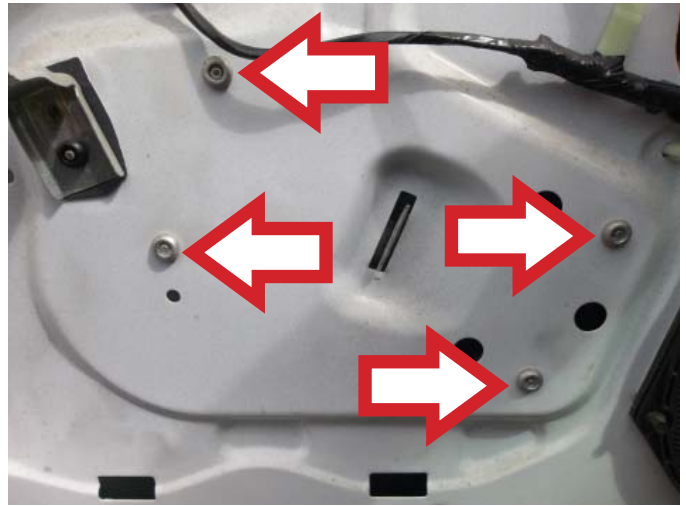
**STEP 12:** Disconnect the window lift motor.



# INSTALL/REMOVAL INSTRUCTIONS: WINDOW REGULATOR

**ATTENTION:** Refer to the appropriate shop manual for your vehicle to obtain specific service procedures for this part. If you do not have a service manual or lack the skill to install this part, it is recommended that you seek the services of a qualified technician. Pay special attention to all cautions and warnings included in the shop manual. Read and follow all instructions carefully.

**STEP 13:** Using your 3/8" power drill and drill bits, remove the rivets attaching the window regulator to the door.



**STEP 14:** Remove the window regulator through the main access hole.



**STEP 15:** Remove the three (3) window lift motor attaching bolts. **NOTE:** SOME VEHICLES CAME EQUIPPED WITH RIVETS ATTACHING TO THE WINDOW REGULATOR. IF THIS IS THE CASE, FOLLOW THE WINDOW REGULATOR RIVET REMOVAL SECTION OF THE INSTRUCTIONS. **CAUTION:** THE WINDOW REGULATOR ASSEMBLY IS UNDER EXTREME PRESSURE DUE TO THE WINDOW REGULATOR PRE-TENSIONER SPRING. REMOVE THE PRE-TENSIONER SPRING.

# INSTALL/REMOVAL INSTRUCTIONS: WINDOW REGULATOR

**ATTENTION:** Refer to the appropriate shop manual for your vehicle to obtain specific service procedures for this part. If you do not have a service manual or lack the skill to install this part, it is recommended that you seek the services of a qualified technician. Pay special attention to all cautions and warnings included in the shop manual. Read and follow all instructions carefully.

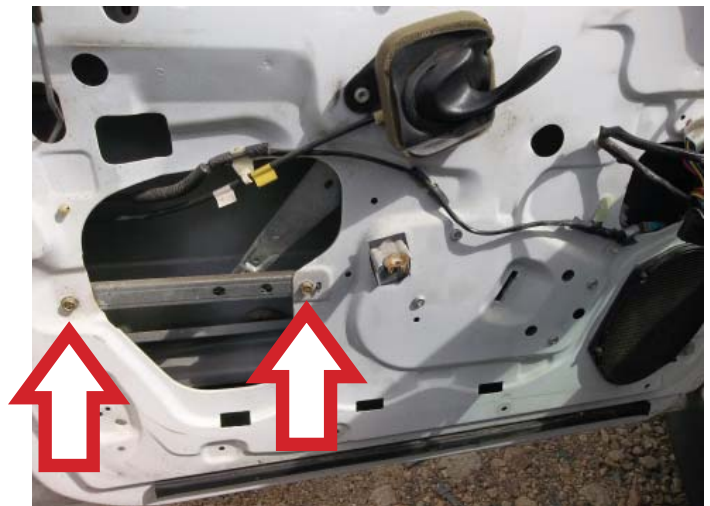
## Installation Instructions

**STEP 1:** Attach the three (3) window lift motor attaching screws. **NOTE:** YOU MUST INSTALL THE PRE-TENSIONER SPRING IF YOU REMOVED IT DURING THE WINDOW LIFT MOTOR REMOVAL PROCEDURE.

**STEP 1a:** Install the window regulator through the main access hole.



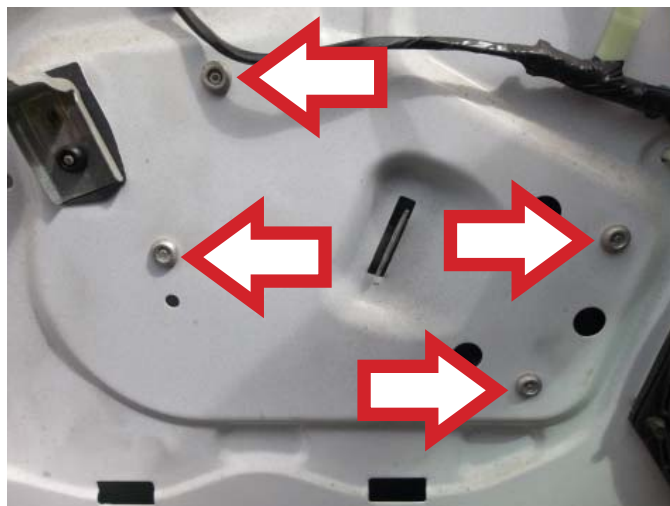
**STEP 2:** Using a 10 mm socket and ratchet, attach the window regulator rail to the door.



# INSTALL/REMOVAL INSTRUCTIONS: WINDOW REGULATOR

**ATTENTION:** Refer to the appropriate shop manual for your vehicle to obtain specific service procedures for this part. If you do not have a service manual or lack the skill to install this part, it is recommended that you seek the services of a qualified technician. Pay special attention to all cautions and warnings included in the shop manual. Read and follow all instructions carefully.

**STEP 3:** Attach the window regulator assembly to the door using your replacement rivets. Alternately, you could use 1/4" x 20 x 1" bolts, 1/4" lock washers, 1/4" flat washers, and 1/4" nuts.



**STEP 4:** Connect the window lift motor.





# INSTALL/REMOVAL INSTRUCTIONS: WINDOW REGULATOR

**ATTENTION:** Refer to the appropriate shop manual for your vehicle to obtain specific service procedures for this part. If you do not have a service manual or lack the skill to install this part, it is recommended that you seek the services of a qualified technician. Pay special attention to all cautions and warnings included in the shop manual. Read and follow all instructions carefully.

**STEP 5:** Temporarily connect the power switch assembly to raise or lower the window regulator, exposing the mounts attaching the door glass to the window regulator.

**STEP 5a:** Manually slide the door glass to align the window regulator mounts to the door glass.

**STEP 5b:** Attach the door glass to the window regulator using rivets. Alternately, you could use 1/4" x 20 x 1" bolts, 1/4" lock washers, 1/4" flat washers, and 1/4" nuts.

**CAUTION:** IF YOU ARE RIVETING THE DOOR GLASS TO THE WINDOW REGULATOR, USE EXTREME CAUTION. YOU MUST HAVE THE RIVET SITTING SQUARE AND FLUSH. IF YOU DO NOT, GLASS BREAKAGE WILL OCCUR. IF YOU ARE USING NUTS AND BOLTS, DO NOT OVERTIGHTEN OR GLASS BREAKAGE WILL OCCUR.

**STEP 6:** Operate the window regulator to verify that the window is operating properly and that there is no binding or interference.

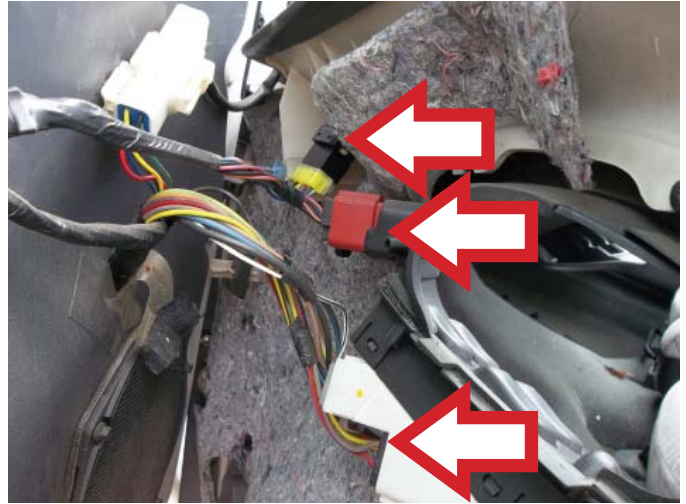
**STEP 7:** Install the water vapor barrier.



# INSTALL/REMOVAL INSTRUCTIONS: WINDOW REGULATOR

**ATTENTION:** Refer to the appropriate shop manual for your vehicle to obtain specific service procedures for this part. If you do not have a service manual or lack the skill to install this part, it is recommended that you seek the services of a qualified technician. Pay special attention to all cautions and warnings included in the shop manual. Read and follow all instructions carefully.

**STEP 8:** Connect the power switch assemblies.



**STEP 9:** Install the interior door trim panel. To install the interior door trim panel, slide the top of the interior door trim panel to the inside top of the door. Locate the interior door trim panel retaining holes and press the interior door trim panel into place.



# INSTALL/REMOVAL INSTRUCTIONS: WINDOW REGULATOR

**ATTENTION:** Refer to the appropriate shop manual for your vehicle to obtain specific service procedures for this part. If you do not have a service manual or lack the skill to install this part, it is recommended that you seek the services of a qualified technician. Pay special attention to all cautions and warnings included in the shop manual. Read and follow all instructions carefully.

**STEP 10:** Using a Phillips head screwdriver, install the interior door trim panel retaining screws.



# INSTALL/REMOVAL INSTRUCTIONS: WINDOW REGULATOR

**ATTENTION:** Refer to the appropriate shop manual for your vehicle to obtain specific service procedures for this part. If you do not have a service manual or lack the skill to install this part, it is recommended that you seek the services of a qualified technician. Pay special attention to all cautions and warnings included in the shop manual. Read and follow all instructions carefully.

**STEP 11:** Install the interior door handle trim.



---

**STEP 12:** Verify that all of the interior door trim panel retaining screws are tight and the window regulator is operating properly.