

INSTALL/REMOVAL INSTRUCTIONS: WINDOW REGULATOR

ATTENTION: Refer to the appropriate shop manual for your vehicle to obtain specific service procedures for this part. If you do not have a service manual or lack the skill to install this part, it is recommended that you seek the services of a qualified technician. Pay special attention to all cautions and warnings included in the shop manual. Read and follow all instructions carefully.

REMOVAL/INSTALL OF WINDOW REGULATOR (740-674) Ford F-Series Pickup & Bronco 1980-96

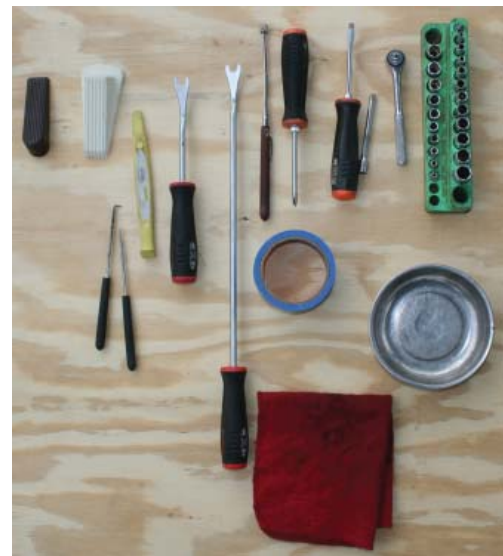
General Tech Tips:

- Use painter's tape rather than duct tape to secure window. It will not damage paint or leave sticky residue.
- A plastic pry tool is useful. It will not easily damage delicate trim like a screwdriver or metal pry bar.
- The replacement regulator should have a liberal amount of grease on slide area. If there is not much grease present, white lithium grease works well to lubricate the slide area.
- Aftermarket window tinting can cause the window to travel slower and put additional strain on the window regulator assembly.
- Window run channels should be cleaned and lubricated before installation of a new window regulator assembly. Silicone spray works well.

Tools required for removal and installation of window regulator and motor assembly:

- **Silicone spray lubricant**
- **Trim panel removal tool**
- **Pick**
- **Saddle cup assembly, tape, or wedge to hold window in place**
- **Flat-blade screwdriver or plastic pry tool**
- **10mm socket or driver**
- **Phillips screwdriver**
- **Grease pencil or marker**
- **1/2" drill bit**
- **Power drill**
- **Large pop rivet gun capable of doing 1/4" pop rivets**
- **Possible materials needed are 1/4" x 20 x 1" bolts, 1/4" washers, and 1/4" x 20 nylon lock nuts**

PLEASE WEAR SAFETY GLASSES!

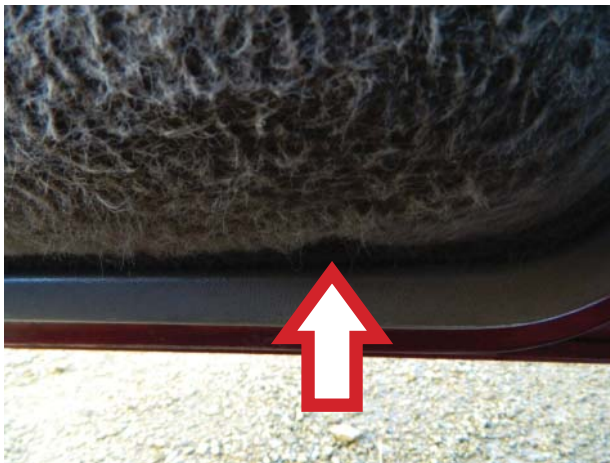


INSTALL/REMOVAL INSTRUCTIONS: WINDOW REGULATOR

ATTENTION: Refer to the appropriate shop manual for your vehicle to obtain specific service procedures for this part. If you do not have a service manual or lack the skill to install this part, it is recommended that you seek the services of a qualified technician. Pay special attention to all cautions and warnings included in the shop manual. Read and follow all instructions carefully.

Removal Instructions

STEP 1: Remove the interior door trim panel retaining screws.



INSTALL/REMOVAL INSTRUCTIONS: WINDOW REGULATOR

ATTENTION: Refer to the appropriate shop manual for your vehicle to obtain specific service procedures for this part. If you do not have a service manual or lack the skill to install this part, it is recommended that you seek the services of a qualified technician. Pay special attention to all cautions and warnings included in the shop manual. Read and follow all instructions carefully.

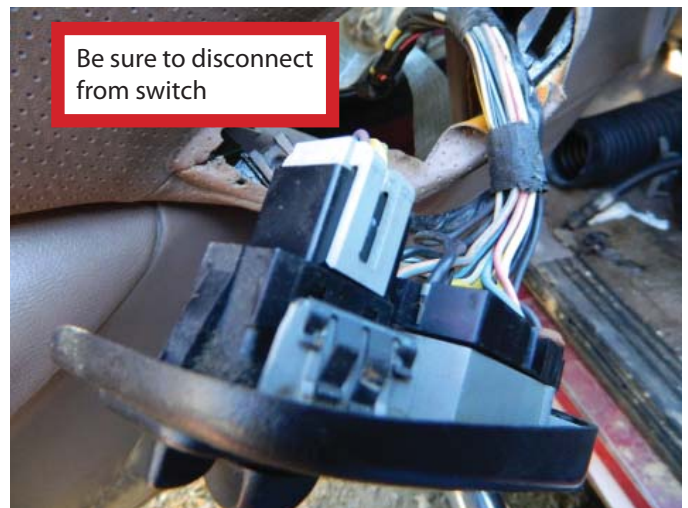
STEP 2: With a trim panel removal tool, remove the interior door trim panel. **NOTE:** The interior door trim panel retaining clips are roughly six (6) inches away from each other.

STEP 2a: Disconnect the connector on the backside of the master power switch assembly.

STEP 2b: If your vehicle came equipped with a courtesy lamp built into the interior door trim panel, please disconnect. **NOTE:** Not all vehicles came equipped with courtesy lamps built into the interior door trim panel. Some vehicles were equipped with a reflector.



STEP 3: Once the interior door trim panel has been removed from the door, remove the master power switch assembly by lifting from the door trim panel and placing the master power switch assembly through the hole in the interior door trim panel.



INSTALL/REMOVAL INSTRUCTIONS: WINDOW REGULATOR

ATTENTION: Refer to the appropriate shop manual for your vehicle to obtain specific service procedures for this part. If you do not have a service manual or lack the skill to install this part, it is recommended that you seek the services of a qualified technician. Pay special attention to all cautions and warnings included in the shop manual. Read and follow all instructions carefully.

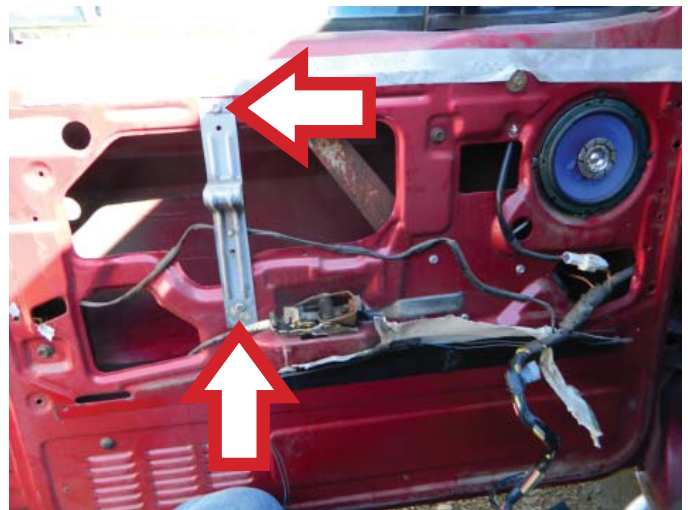
STEP 4: Remove the water vapor barrier.



STEP 5: Disconnect the door speaker.



STEP 6: Using a 1/2" drill bit and a power drill, drill out the two (2) rivets holding the door brace onto the door. **NOTE:** You are using the drill and drill bit to remove the head of the rivet. **DO NOT DRILL ALL THE WAY THROUGH. YOU WILL DAMAGE THE DOOR AS WELL AS THE BRACE.**

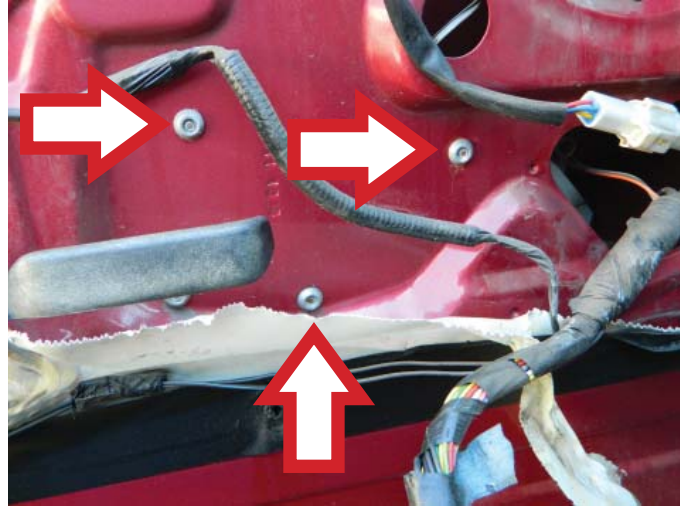


INSTALL/REMOVAL INSTRUCTIONS: WINDOW REGULATOR

ATTENTION: Refer to the appropriate shop manual for your vehicle to obtain specific service procedures for this part. If you do not have a service manual or lack the skill to install this part, it is recommended that you seek the services of a qualified technician. Pay special attention to all cautions and warnings included in the shop manual. Read and follow all instructions carefully.

STEP 7: Turn the vehicle ignition to the accessory position to lower the door glass so that you can disconnect the glass from the window regulator. **NOTE:** Once the door glass has been disconnected from the window regulator, manually slide the door glass into the up position and hold in place with either a saddle cup assembly, painter's tape, or a wedge.

STEP 8: Using your 1/2" drill bit and power drill, remove only the heads of the rivet holding the window regulator on the door. If you drill all the way through the rivet with your 1/2" drill bit, you will damage the door.



STEP 9: Remove the window regulator through the access hole.



STEP 10: Remove the three (3) window lift motor attaching screws and remove the window lift motor from the window regulator.

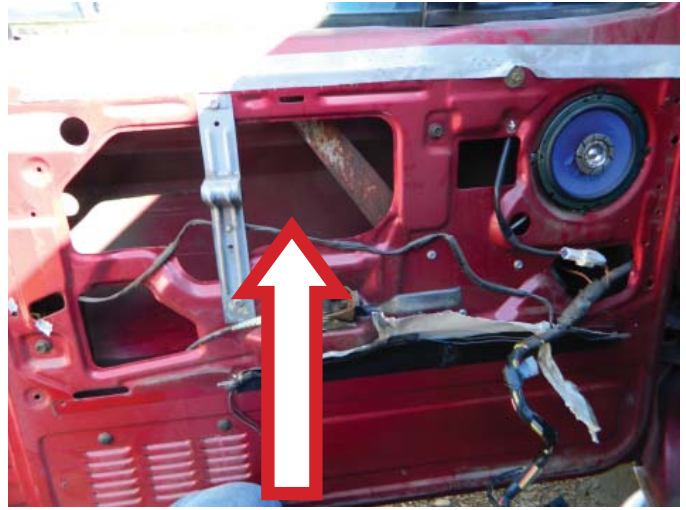
INSTALL/REMOVAL INSTRUCTIONS: WINDOW REGULATOR

ATTENTION: Refer to the appropriate shop manual for your vehicle to obtain specific service procedures for this part. If you do not have a service manual or lack the skill to install this part, it is recommended that you seek the services of a qualified technician. Pay special attention to all cautions and warnings included in the shop manual. Read and follow all instructions carefully.

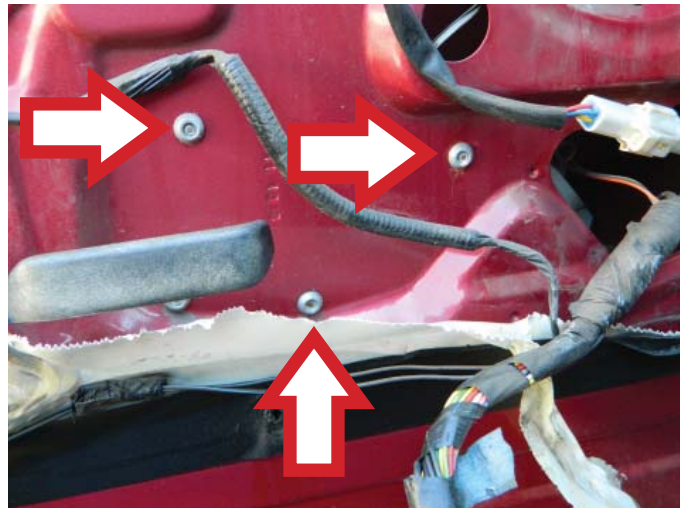
Installation Instructions

STEP 1: Attach the window lift motor to the window regulator.

STEP 1a: Install the window regulator through the access hole.



STEP 2: Install the window regulator onto the door and connect the window lift motor connector. **NOTE:** If you do not have access to a large rivet gun capable of handling $\frac{1}{4}$ " x $\frac{3}{4}$ " rivets, it is okay if you use $\frac{1}{4}$ " x 20 x up to 1" bolts washers and the corresponding nylon locking nuts when installing the window regulator onto the door.



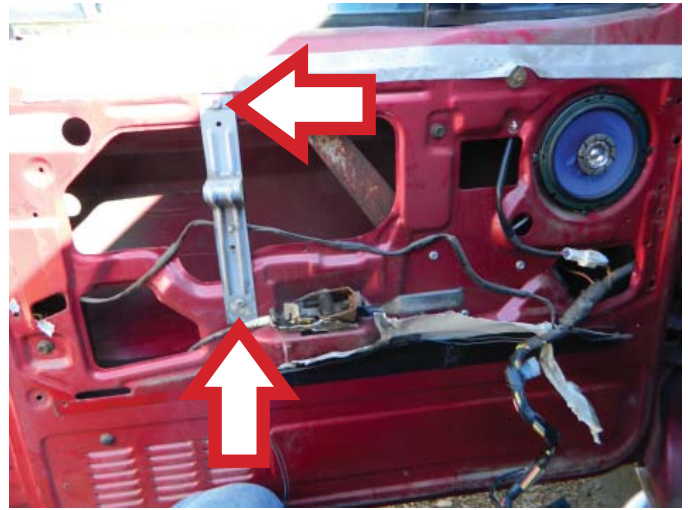
STEP 3: Once the window regulator has been installed, manually lower the window glass into position to attach onto the window regulator.

INSTALL/REMOVAL INSTRUCTIONS: WINDOW REGULATOR

ATTENTION: Refer to the appropriate shop manual for your vehicle to obtain specific service procedures for this part. If you do not have a service manual or lack the skill to install this part, it is recommended that you seek the services of a qualified technician. Pay special attention to all cautions and warnings included in the shop manual. Read and follow all instructions carefully.

STEP 4: Once the window glass is in position and you have verified that the glass is operating smoothly, install the door brace.

NOTE: If you do not have access to a large rivet gun capable of handling $\frac{1}{4}$ " x $\frac{3}{4}$ " rivets, it is okay if you use $\frac{1}{4}$ " x 20 x up to 1" bolts washers and the corresponding nylon locking nuts when installing the window regulator onto the door.



STEP 5: Attach the water vapor barrier.



STEP 6: Place the master power switch assembly through the opening of the interior door trim panel.



INSTALL/REMOVAL INSTRUCTIONS: WINDOW REGULATOR

ATTENTION: Refer to the appropriate shop manual for your vehicle to obtain specific service procedures for this part. If you do not have a service manual or lack the skill to install this part, it is recommended that you seek the services of a qualified technician. Pay special attention to all cautions and warnings included in the shop manual. Read and follow all instructions carefully.

STEP 7: Connect the master power switch.



STEP 8: Connect the door mounted courtesy lamp. **NOTE:** Not all vehicles came equipped with a courtesy lamp. Some vehicles were equipped with a reflector.

STEP 9: Attach the interior door trim panel to the door.

INSTALL/REMOVAL INSTRUCTIONS: WINDOW REGULATOR

ATTENTION: Refer to the appropriate shop manual for your vehicle to obtain specific service procedures for this part. If you do not have a service manual or lack the skill to install this part, it is recommended that you seek the services of a qualified technician. Pay special attention to all cautions and warnings included in the shop manual. Read and follow all instructions carefully.

STEP 10: Attach the interior door trim panel retaining screws.



INSTALL/REMOVAL INSTRUCTIONS: WINDOW REGULATOR

ATTENTION: Refer to the appropriate shop manual for your vehicle to obtain specific service procedures for this part. If you do not have a service manual or lack the skill to install this part, it is recommended that you seek the services of a qualified technician. Pay special attention to all cautions and warnings included in the shop manual. Read and follow all instructions carefully.

STEP 11: Attach the master power window switch to the interior door trim panel.



STEP 12: Verify that all of the interior door trim panel attaching screws are mounted securely and that the window is operating properly.