

# DOMINATOR

## RACE PRODUCTS

TM



# "NEW" Dominator D2X Late Model Nose Kit !

The D2X Dirt Late Model Nose kit is approved for use in all the racing series in the USA. The D2X nose kit features a flange fit nose center for that perfect fit. The D2X fender flares lay over the nose piece side to allow for adjustability of the flare. This makes a perfect fit also allowing you to yaw the nose kit for better aerodynamics. The D2X nose kit is easy to install and is built with a Hi-Impact durable plastic that we have been using for years. "Just can't beat a good thing" as we say.

With the "Slick Aerodynamic Design" and "Lower Right Side Flare" the D2X nose kit gives you the best "Aero-Package" for dirt late model racing. The Nose package includes the L/R Nose & L/R Flares. Adding to the "Aerodynamic features a 2-piece lower "Aero-Valance" is available, which enhances the air flow up and over the car. The lower "Aero-Valance" is offered in 8 colors for a 2-tone color feature.

Featuring 12 styles of "Race-Glow" headlight decals available for the D2X nose kit.

The D2X Nose Kit is the perfect fit for Late Model Crate Cars & Sportsman Cars.

**New Design for 2016 !**



The re-designed D2X right side fender flare is only offered in the "Aerodynamic Lower Version".

Allows for a smooth "Air Flow" over the deck of the car creating

"Over-All Downforce"

Left side flare 4" in height

"Meets all Rules"

Wider wheel flange equals "More Side Downforce"

Re-designed wheel well opening - "Better Wheel Clearance"

"Wider Air-Dam & Lower Valance"

**D2X - 2 Piece Lower Aero Valance !**

**3 1/2 Wide - Lowerd left side of nose!**

**8-Colors - Part #DOM-2206**

- D2X Nose & Flares Part # DOM-2200
- D2X Left Nose Part # DOM-2201
- D2X Right Nose Part # DOM-2202
- D2X Left Flare Part # DOM-2203
- D2X Right Flare Part # DOM-2204
- D2X Lower Supports Part # DOM-2205
- D2X Aero-Valance Part # DOM-2206
- D2X Night-Glow Headlights location on page 2

D2X - Available in 8 colors!



Dominators Body Bolt packages  
Ez-install of the 2-piece "Aero-Valance"  
Available in 10 colors  
Part #DOM-1200



Lower supports help in mounting the nose to the bumper & makes the nose ridge across the front of the aero valance

"Improved Aerodynamics"

Part #DOM-205



**Time to Dominate!**  
**Join the Dominator team for a**  
**"Winning Season"**



# Dominator D1 Late Model Nose Kit with "Aero-Valance"

The D1 Dirt Late Model Nose Kit is approved for use in all the racing series in the USA. The D1 nose kit features a flange fit nose to the flare for that perfect fit. Easy to install and is built with a Hi-Impact durable plastic that we been using for years." Just can't beat a good thing" as we say. With the aerodynamic design the D1 nose kit will help put you into the winner's circle. The D1 nose kit set the dirt racing world on fire with it's radical design & features. The nose kit includes: L/R Nose & L/R Flares. 12 styles of "Night-Glow" headlight decals are available for the D1. The D1 nose kit has the lower aero valance built into for a more durable package. The D1 Nose Kit is a great fit for Crate Cars & Sportsman Cars. "The triangle supports are no longer available on the D1 nose kit" photo below.

Part #DOM-100



## D1 Nose Kit - Black-White-Green-Purple

- D1 Nose & Flares Part # DOM-100
- D1 Left Nose Part # DOM-101
- D1 Right Nose Part # DOM-102
- D1 Left Flare Part # DOM-103
- D1 Right Flare Part # DOM-104
- D1 Lower Supports Part # DOM-105
- D1 Night-Glow Headlights



Our lower supports help in mounting the nose & bumper this makes the nose ridge across the front air-damn.  
Heavy gage plastic .300  
D1 Lower Supports Part #DOM-105



Dominator Night-Glow Headlight Kit will sure make a big statement when cruising to that dominating win ! The headlight kits are made of a reflective material that lights up with a flash of the camera! A protective clear laminate over the lights makes them last a full season. Part # DOM-###



CORVETTE

DOM-210



CAMARO

DOM-214



FUSION

DOM-218



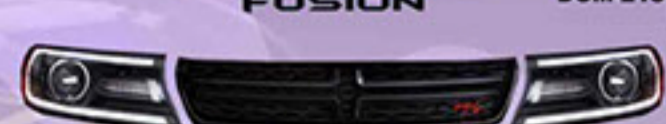
IMPALA SS

DOM-211



CAMRY

DOM-215



CHARGER

DOM-219



MONTE CARLO

DOM-212



STS

DOM-216



MERCEDES

DOM-220



PONTIAC

DOM-213



MUSTANG

DOM-217



VIPER

DOM-221

## Dominator 3-Piece Modified Valance Kit

The 3 piece kit that will add the final touch to your modified race car. Everyone asked us to build a simple and easy to install "Aero-Valance" for the modified. With the Dirt Modifieds rolling over in the corners our new Valance Kit will not be digging into the track. Our design & research department have built a winning item.

The days of just hanging plastic around the lower nose is long gone!

Built with a durable Hi-Impact plastic - Available in 8- colors

Nose - 45" wide x 6" deep. Sides-left & right 30" long

Part #Dom-408-Color



Mod Valance Kit - Available in 8 colors!

## Dominator Modified Hood Side Kit

The modified hood side kit includes a pair of aluminum top pieces with 2 Inner & 2 outer plastic sides.

This makes it so EZ to build a 3-piece hood kit.

This slick design makes for a simple offset hood build that so many modified chassis are using today.

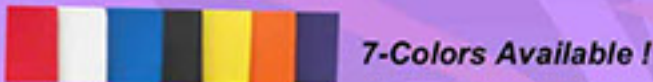
Plastic sides colors are available in Black-White-Yellow-Blue and Aluminum Tops in 7 colors

Red-White-Blue-Black-Yellow-Orange-Purple

Part # DOM-404



Smooths the air flow over the deck!  
"Aerodynamic Advantage"  
Pre-Drilled for EZ-Install!



7-Colors Available!



## Dominator Modified Nose Kit

Aero-Slick 3 piece modified nose. 3" Aero-Valance"

Wider Nose - More Downforce.

Xtreme Aero Flare Designed.

Approved By: ALL SERIES!

Durable Hi-Impact plastic material

Adjustable to meet all rules - 42" - 45"

Part # DOM-400



7-Colors Available!

## Dominator Steel Modified Bumper Kit

We have built a real nice bumper kit for the Dominator nose. Also fitting the aluminum front ends. This kit includes a Inner & outer steel structure. Just weld the flat mounting plates to your chassis & you are ready to go!

Part # DOM-410



## Dominator SS Street Stock Nose Kit !

**The Dominator SS Street Stock Nose Kit is approved for use in all racing series in the USA**

The Dominator SS Street Stock Nose is designed to fit the older style 88 Monte Carlo body but with a fresh new look of the Chevy SS race car. The SS Street Stock Nose is built with our "Hi-Impact" plastic material designed to last a full season! Our design department went a few steps further with the built-in lower grill openings that can be cut open to allow cool air into the radiator.

Dominator SS Nose Kit has a pair of lower side fender extension that add to the aggressive look.

Dominator SS Street Stock is available with our "Night Glow" headlight stickers to add that finishing touch to your racecar.

**Dominator SS Street Stock Nose Kit available in 8 colors. Part - #DOM-300**



8 - Colors Available !



## Dominator SS Street Stock Rear Bumper Cover !

**The Dominator SS Bumper Cover is approved for use in racing series in the USA**

The Dominator SS Bumper Cover is designed to fit the older style 88 Monte Carlo body - with a fresh new look of the Chevy SS race car.

The Dominator SS Bumper Cover is built with our "Hi-Impact" plastic material designed to last a full season!

Our design department went a few steps further with the built-in Dominator name just to let the competition know who's out front !

Dominator SS bumper cover has that added aggressive look.

Dominator SS bumper cover is available with our "Night Glow" tail-light graphics to add that finishing touch to your racecar.

**Dominator SS Bumper Cover available in 8 colors. Part - #DOM-301**



**Time to Dominate!  
Join the Dominator team for a  
"Winning Season"**



## Dominator SS "Night-Glow" Headlight Kit

Make a big statement when cruising to that dominating win !

The headlight kit is made of a reflective material that lights up with a flash of the camera!

A protective clear laminate over the lights make them last a full season.

Part #DOM-308



**Dominator SS Tail-Lights**  
Reflective material for that real look!  
Part #309



## The Dominator SS Street Stock Grill

The steel grill is pre-cut to fit - just cut open your SS nose piece & rivet in.

The Dominator SS Grill allows cool air into the radiator!



Part #DOM-310  
"SS Grill"



## Dominator Dirt Roof !

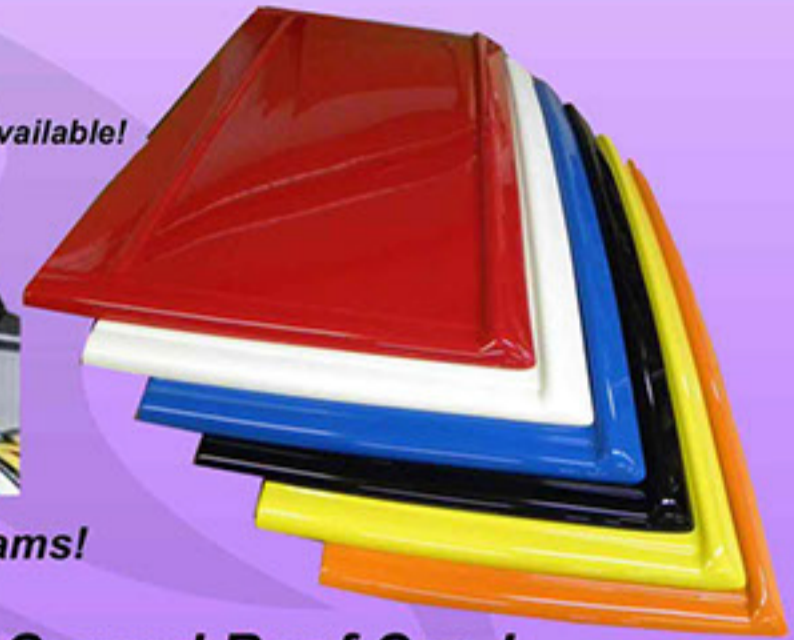
The Dominator Dirt Roof is a two piece design that saves shop time when building your dirt car. No longer do you need to bend a aluminum roof that will crack & bend during the racing season. With our Dominator Dirt Roof you just rivet it together & mount it to the chassis. The dirt roof is made of high impact plastic material that has a bright shiney finish. The Dominator Dirt Roof is designed to be used with our Dominator Sail Panels & the Dominator Pillar Post. All of our roof items are built to last many racing seasons.

Available in 6 colors - Red - White - Blue - Black - Yellow - Orange. The Dominator Dirt Roof will fit on Late Models - Modifieds or Street Stocks. Our roof is fast becoming a standard for many race teams. The size is 48"W x 49"L

Part #DOM-700



6 - Colors Available!



Dominator Dirt Roof used by many Late Model - Modified & Street Stock teams!



## Dominator Curved Roof Cap !

Protect the leading edge of your roof from rocks & debris. The roof cap is made with our carbon fiber plastic material that we been using for well over 10 years!  
50" Long and Very Durable !

Part #DOM-705-CF



## Dominator Dirt Sail Panels - Open & Closed !

The Dominator Dirt Sail Panel design is truly cutting-edge a new standard in the racing industry!

Dominator Dirt Sail Panels are available in the "Extremely Aerodynamic" open design that is very important in todays dirt racing.

Not only do they look awesome, the Sail Panels are very durable & feature a smooth shiney finish which match our Dominator Dirt Roof & Dominator Pillar Post. The Dominator Sail Panels are designed to save shop time when building your dirt car.

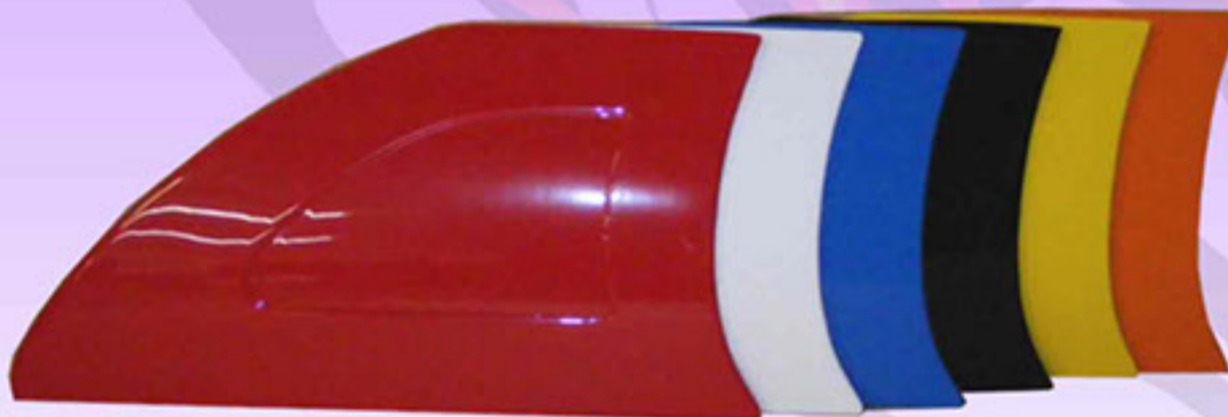
With "EZ-Installation" the Dominator Sail Panels will take many nights of hard racing.

The Sail Panels are available in six (6) colors -Red-White-Blue-Black-Yellow-Orange

Left Side 43" long bottom & 19" tall - Right side 43" long bottom & 23" tall

Part #DOM-800 Closed Style

Open Style Part # DOM-805



Late Model - Sportsman & Street Stock Style !



## Dominator Sail Panel Graphics!

A pair of very nice window graphics that add the final touch to your sail panels.

Part # DOM-803



5

Dominator  
Sail Panel & Pillar Post Mounting Brackets!  
4 - piece aluminum kit - 2 - 40" & 2 - 8"  
6 Colors - Part #DOM-804



## Dominator Dirt Pillar Posts !

The Dominator Pillar Post design is truly cutting-edge, a new standard in the racing industry!  
Not only do they look awesome, the Pillar Posts are very durable & feature a smooth shiney finish that match our Dominator Dirt Roof & Dominator Sail Panels.

The Dominator Pillar Post is designed to save shop time when building your dirt car.  
With "EZ-Installation" the Dominator Pillar Posts will take many nights of hard racing.

The Pillar Posts are available in six (6) colors -Red-White-Blue-Black-Yellow-Orange

Left Side 33" Long & Right side 36" long. Part #DOM-810



The Dominator Pillar Post can be used on all Dirt Late Model - Sportsman & Street Stock race cars !



Photo shown with our Mod-Hood Sides, our Roof - Pillars & Modified Sails Panels for that sleek look.

## Dominator Street Stock Sail Panels !

Factory style Monte Carlo Sail Panels with a window profile. Made with white steel that is paintable.  
The over sized factory style panels are a rivet in place panel.

Part # DOM-320

Factory Style Monte Carlo Sail Panels !  
Meets Track Rules!



## Dominator Modified Dirt Sail Panels - Open & Closed !

The Dominator Modified Dirt Sail Panel design is truly cutting-edge, a new standard in the racing industry!

Dominator Modified Dirt Sail Panels are available in the "Extremely Aerodynamic" open design that is very important in todays dirt racing.

Not only do they look awesome, the Sail Panels are very durable & feature a smooth shiney finish that match our

Dominator Dirt Roof & Dominator Pillar Post. The Dominator Modified Sail Panels are designed to save shop time when building your modified.

With "EZ-Installation" the Modified Sail Panels are available in four (4) colors -White-Blue-Black-Yellow

Left Side 56" long bottom & 19" tall - Right side 56" long bottom & 23" tall

Part #DOM-420 closed style

Open Style Part # DOM-430



"Extremely Aerodynamic"



"Meets Modified Rules"



## Dominator Dirt Late Model Fenders !

The Dominator Late Model Fender design is truly cutting-edge, a new standard in the racing industry!

The Late Model Fenders are made with a "Aerodynamic Design" that is very important in todays dirt racing.

Not only do they look awesome, the Late Model Fenders are very durable & feature a smooth shiny finish which match the aluminum hood. The Dominator Late Model Fenders are designed to save on shop time when building your race car they are available with a pair of aluminum braces that make these fenders extra strong.

With "EZ-Installation" the Late Model Fenders are available in Six (6) colors Red-White-Blue-Black-Yellow-Orange Fenders are 51" Long & 16" wide - same on both sides.

**Part #DOM-600**

Color matches aluminum body panels!  
51" Long x 16" wide

Dominator Dirt Late Model Fender Set!



## Dominator Fender Sides !

With a pair of our Dominator Fender Sides building the front end of your race car just got a lot easier. Built with the same durable material as the Dominator Dirt Fenders the fender sides put the finishing touch to your front end.

The size of our fender sides are Left & Right - 31" X 14"  
6 colors available!

**Part #DOM-602**



## Dominator Dirt Rocker Panels !

The Dominator Dirt Rockers or "Skirts" as a lot of the racers call them, add a final touch to the lower body of your dirt car.

Late models - Modified & Street Stocks are using our rocker panels. Made with our "Hi-Impact" plastic this 3 piece kit is 86" long x 7" wide.

The Dirt Rockers are made to last a full season of hard racing.

The kit includes 3 pieces 86" long - one section is cut in-half and used on the rear quarter panels.

Available in 8 colors and match our nose piece colors.

**Part # DOM-1100**



Dominator Dirt Rockers 3 piece set  
will complete a full racecar.





# Dominator Dirt Hood Scoops !

The Dominator Dirt Hood Scoops are a cutting edge design that meet the demands of today's racing industry.

All of our Dominator Dirt Hood Scoops are made with a are very durable

"Carbon Fiber Pattern" plastic finish that we are know for.

"Aerodynamic Design" tested and racer approved for many years. Along with the awesome styles our 12 different designs and 5 different heights, will meet any hood scoop demand. With many small shops trying to replicate our hood scoop designs they all fall short in quality & durability.

The Dominator Dirt Hood Scoops are designed to be used on Dirt Late Models - Modifieds & Street Stocks.

With EZ-Installtion our hood scoops save on shop time when building your race car. Available in a Carbon Fiber Pattern finish or white.



"Stalker" 1.5"  
Part #DOM-501



## "Stalker" 3.5"

Works great to keep dirt & rocks from hitting the air cleaner when sticking through the hood.

Part #DOM-503 cf/wh



"Stalker" 4.5"  
Part #DOM-504



"Stalker" 2.5"  
Part #DOM-502



"Stalker" 5.5"  
Part #DOM-505

## "Stalker Curved Bottom"

The curved bottom Stalkers scoops are designed to fit the newer style hoods with a aerodynamic smooth transition into the deck of the race car. The Curved Bottom scoops are fast becoming the "Gotta Have" item. We stock 3 heights 2.5"- 3.5"- 4.5" all available in the Carbon Fiber pattern plastic. With "EZ-Instalation" your Dominator hood scoop will last many seasons!



2.5 Curved Stalker  
Part #DOM-512



3.5 Curved Stalker  
Part #DOM-514



4.5 Curved Stalker  
Part #DOM-516



2.5 Std. Scoop  
Part #DOM-506



3.5 Std. Scoop  
Part #DOM-507



3.5 Open Scoop  
Part #DOM-508



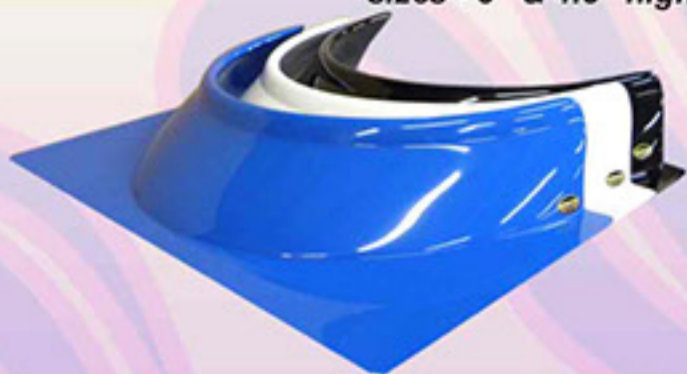
The Predator 3.5" Fits close to the air cleaner for that clean look!  
Part #DOM-500

Time to Dominate !  
Join the Dominator team for a  
"Winning Season"



## Dominator Formed Rock Guards !

It's time too throw away the fiberglass race car parts of yesterday and step up to a first class race product of today. We have taken the time & designed a winning product for the drivers compartment. With just a little trimming our rock guard will fit into any chassis builders deck configuration. No longer will you need to mess with the aluminum trying to make it roll around & fit. The formed rockguards are available in two sizes - 3" & 4.5" high & 24"across rear with a 18"depth front to back -- Available in Black - White - Blue



4.5" - #DOM-901



3" - #DOM-900



### Dominator Rock Guard !

Save your hands from rocks & debris with our Rock Guards. We offer them in a tinted or clear "Hi-Impact" lexan plastic.

Clear - #DOM-905    Tinted - #DOM-906



Designed by Barry Wright Race Cars !

#DOM-545

### Dominator Radiator Shroud !

Dominator Radiator Shrouds are available in two styles. Keeping your engine cool this racing season will be easy. Made of durable plastic material our shroud will fit your Dirt Late Model - Modified - Street Stock just fine.

With two sizes available:

23.5" wide x 21"high x 3"deep - Part #DOM-540  
22" wide x 19" high x 3" deep - Part #DOM-545



#DOM-540

### Dominator Oil Cooler Scoop !

This smooth aerodynamic design can be mounted forward or backward to allow cool air going across the oil-cooler. Dominator Oil Cooler scoop is available in two styles, a Front/Back style is 7" wide x 11" long. The other style is the Left /Right 11" wide x 7" long. Both styles are available in white & carbon fiber style material.

The oil coolers are mounted with a small flange around the outside edge for fast & easy install.

Part #DOM-560 7"x 11"

Part #DOM-561 11"x 7"



#DOM-560

Don't Loose Your Cool !  
Lower oil temp!

Carbon Fiber Style & White available !



#DOM-561

### Dominator Cold Air Box !

Dominator's new Cold Air Box helps the engine bring in cool air from outside the car while also sealing off the hot air from underneath the hood. All race engines build more "Horse Power" when breathing cool air. The Cold Air Box is a universal design utilizing your aluminum air cleaner base plate. With a "trim to fit" application fitting Late Models - Modifieds - Street Stocks. Made of a durable plastic material and includes a silicone seal.

Part #DOM-570



## Dominator Hood Pin Scuff Plates !

Our high quality injected molded scuff plates are the only way to go this racing season. Put a end to the oblong holes and gouging the pin shaft, a commom issue with alumunim plates.

The Dominator Scuff Plates feature a raised center for easy removal of the hood pin clips. The scuff plates have a 1/2" pin hole and 4 recssed rivet holes that makes for "EZ-Instalation" - Available in 10 colors and sold in packs of 4 with 16 pop rivets.

Part #DOM-1202



#DOM-1202-RD

#DOM-1202-WH

#DOM-1202-BL

#DOM-1202-BK

#DOM-1202-YE



#DOM-1202-OR

#DOM-1202-PU

#DOM-1202-XG

#DOM-1202-PK

#DOM-1202-SIL



Dominator Flamed Scuff Plates !  
10 Colors available !  
Part #DOM-1203-BK

## Dominator Body Bolt Kits !

Using Dominator Body Bolt Kits are a great way to assemble your race car body panels. From our D2X Nose Kit & Low Valance to the Front Fenders or Rocker Panels the Body Bolt Kits can be used. Built with a very durable injection molded plastic for today's racing needs. Available in 10 colors, the kits includes: 10 colored washers - 10 bolts - 10 steel washers - 10 Nylon 1/4 nuts - 10 1.5" Phillips head bolts.

When installing a lower valance and rocker panels 5 packs will be needed.

Part #DOM-1200



#DOM-1200-RD

#DOM-1200-WH

#DOM-1200-BL

#DOM-1200-BK

#DOM-1200-YE



#DOM-1200-SIL

#DOM-1200-PK

#DOM-1200-PU

#DOM-1200-OR

#DOM-1200-XG

# Dominator Ultimate Wheel Cover !

*Dominator Ultimate Wheel Cover is a "Uni-Fit" wheel cover that features a "Domed" center. This "Dome" center is less prone to mud packing and is "Aerodynamic". This Ultimate Wheel Cover is injection molded and built with a "Hi-Impact" durable plastic material. With a center hole and close tolerance zues fasteners this makes for a secure fitting wheel cover. Fitting rims like Weld / Keizer / Aero / Bassett / Bart / Circle / Real and many other styles. Available in 11 colors The New Ultimate Wheel Cover has "Gotcha Covered"*

**Part # DOM-1012**

*Real Rims - DOM-1006 - same colors.*



***New Design for 2016 !***



# Dominator Stainless Steel Wheel Ring !

*This stainless steel wheel ring is designed for non-bead lock rims. With "EZ-Instalation" to the rim, mounting a wheel cover to a non-beadlock rim is easy. Built with a high quality stainless steel and very durable Dominator wheel ring is a "Uni-Fit". With a close tolerance on the stainless zues springs to the grade 8 bolt & nut. This wheel ring will last many racing seasons. Aero-Bassett-Bart-Weld-Keizer-Circle-Real and many others.*

*A perfect mate with our Ultimate wheel cover!*

**Part# DOM-1015**



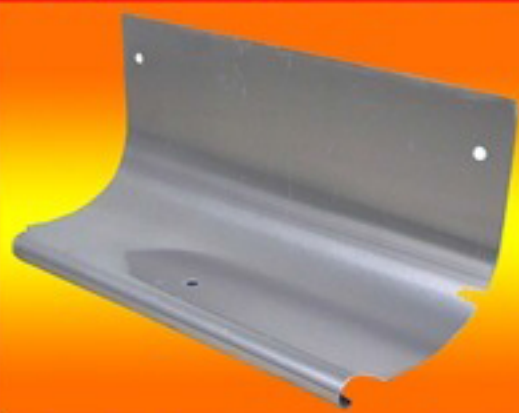


*Sprint Wing Cap Pr. 60"*  
*Micro Top Cap-50"*



*11" tall*

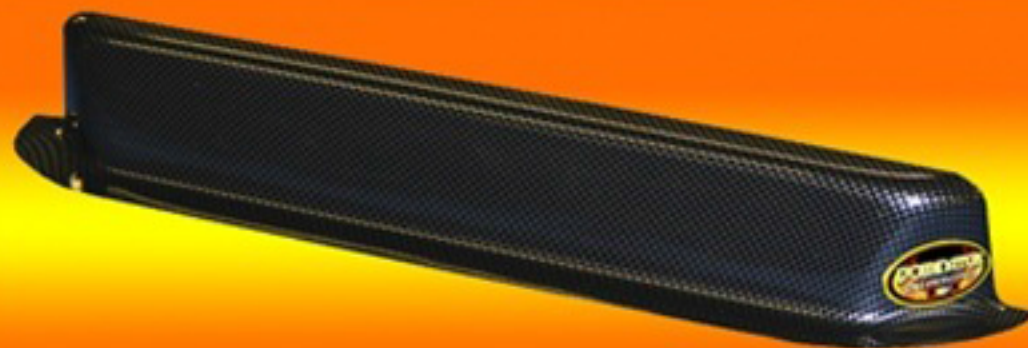
## Shock Covers



## Radiator Air Scoop



2010 Winner of the 50th GoodYear  
Knoxville Nationals



## Hood Deflector