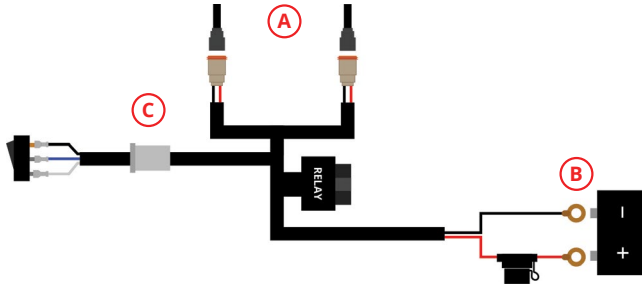




11. Install your Stage Series 30" light bars in the brackets with the provided flanged-head M6 hardware. For two bars, we suggest installing in the 1<sup>st</sup> and 6<sup>th</sup>, or 1<sup>st</sup> and 7<sup>th</sup>, slots from the top.

Then tighten all hardware.



12. Connect the light bar(s) to the included wiring harness (A). Route the wiring harness to the battery and connect the ring terminals to the positive and negative battery terminals (B). Use the included toggle switch (C) and run it into your cabin. We suggest routing wires behind the driver side headlight to the battery.

13. Loosely push the bumper into place and check light bar fitment. If contact occurs, move the light bars rearward in the slots.

14. Reverse steps 1 through 6 to reinstall the bumper and complete installation.

**This installation guide is for the following SKUs:**

- DD6759 4Runner SS30 Stealth Lightbar Brackets
- DD6760 4Runner SS30 Single Stealth Light Kit White Combo
- DD6761 4Runner SS30 Single Stealth Light Kit Amber Combo
- DD6762 4Runner SS30 Single Stealth Light Kit White Driving
- DD6763 4Runner SS30 Single Stealth Light Kit Amber Driving

- DD6764 4Runner SS30 Dual Stealth Light Kit White Combo
- DD6765 4Runner SS30 Dual Stealth Light Kit Amber Combo
- DD6766 4Runner SS30 Dual Stealth Light Kit White Driving
- DD6767 4Runner SS30 Dual Stealth Light Kit Amber Driving

# DIODE DYNAMICS

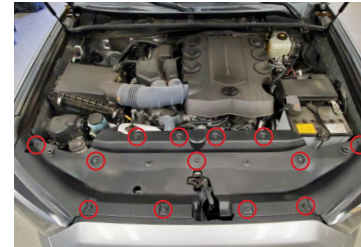
PERFORMANCE LIGHTING TECHNOLOGY

## 2014-2019 Toyota 4Runner SS30 Stealth Lightbar Kit Installation Guide



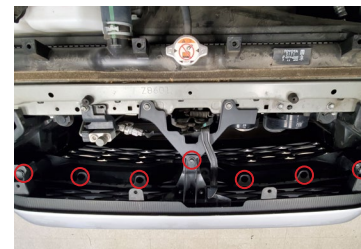
Thank you for your purchase of this custom-designed LED lightbar kit for your 2014-2019 Toyota 4Runner! This kit utilizes both factory and included hardware from the light bar to mount the bracket to the vehicle.

**Tools Needed:** 10mm socket, 14mm wrench, flathead screwdriver or plastic trim tool



1. Remove the thirteen push-rivets holding the core support trim panel in place. Push down in the center of each push-rivet and then use a plastic trim removal tool or flathead screwdriver to extract the push-rivet.

Reset the push-rivets upon removal by pushing the center section back through the top.



2. Using a trim removal tool or flathead screwdriver, remove the six plastic push-rivets shown in the image to the left.

Then using a 10mm socket, remove the screw in the center.

*See inside for further instructions.*

# DIODE DYNAMICS

2014-2019 Toyota 4Runner

## SS30 Stealth Lightbar Kit Installation Guide



3. Using a 10mm socket, remove the six screws along the bottom of the bumper (passenger's side shown in picture to the left).

Then reach up from underneath the vehicle and disconnect the factory fog lights.



4. Using a 10mm socket, remove the three screws from the edge of the front bumper in the wheel well.

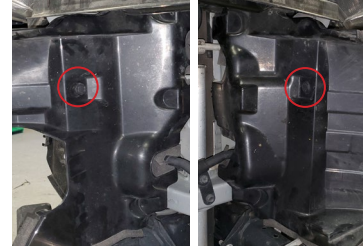


5. Using a trim removal tool, pull the upper edge of the bumper off the snap feature, and slide the lower two screw-clips off the bumper. Then pull the corner of the bumper away from the fender.

Repeat this step on the other side of the bumper.



6. With help from a second person, pull the bumper straight forward to release snaps around the headlights and remove the bumper.



7. Using a trim removal tool, remove the two plastic push-rivets from the air dams.

Do not remove the air dams.



8. Using a 14mm wrench, loosen the second from the outboard bolt on the bumper bar (driver's side shown in picture to the left).



9. Slide the open-slot of your new Diode Dynamics Toyota 4Runner SS30 brackets under the air dams to the bolts loosened in the previous step.



10. Loosely secure the brackets to the air dams with the provided M6 screw, washer, and nut.

*See back for further instructions.*