

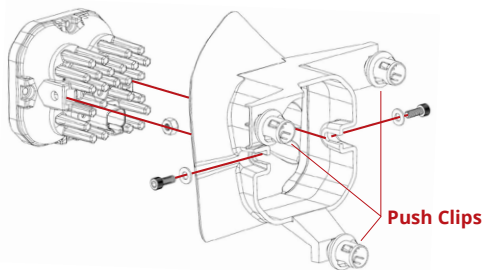
RAM 1500 PLASTIC BUMPER

Thank you for your purchase of our new SS3 Ram Horizontal Foglight Kit. CAD-designed to use existing mounting points, this kit is compatible with the 2009-2012 Ram 1500 and 2010-2018 Ram HD. Basic installation instructions are included below.

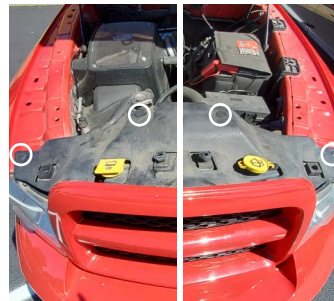
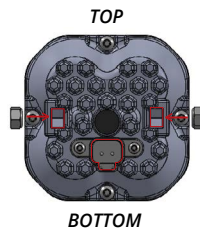
COMPUTER DESIGNED
OEM FITMENT



INSTRUCTIONS BELOW ARE FOR THE RAM 1500 WITH PLASTIC BUMPER ONLY:



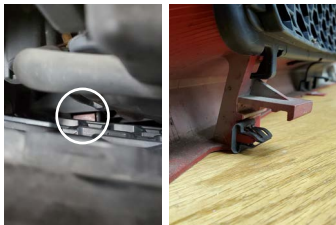
Driver/Left Side (opposite for passenger/right side)



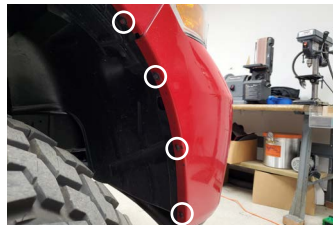
1. Install the supplied nuts into the pod housing with the nylon lock ring facing inward. Attach the bracket to the pod using the supplied screws and washers. See diagrams above. The screws will also determine the aim of your SS3 pods. Ensure that the screws are tightened such that the pod retains its position, but can pivot with force for aiming.

2. Using a trim removal tool, remove the four plastic push rivets along the top cover panel.

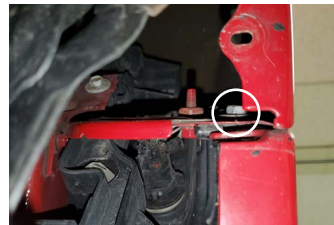
3. Using a 10mm socket, remove the four bolts along the top of the grill.



4. Using a trim removal tool, lift the two tabs located in the lower corners of the grill. Then pull the grill straight out.



5. Using a 8mm socket, remove the two bolts on the inner fender liner. Then use a Phillips-Head screwdriver and trim removal tool to remove the two plastic fasteners.

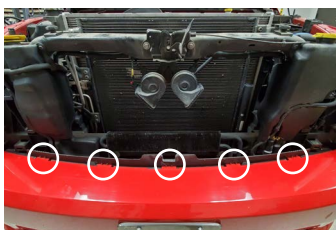


6. Gently pull the inner fender liner away from the bumper. Then use a 10mm socket to remove the bumper mounting screw from the inner fender.



7. Using a 10mm socket, remove the four bolts along the bottom of the bumper.

Repeat steps five and six on the other side of the vehicle.



8. Gently pull the bumper at both corners to release the clips located under the headlights. Then release the five tabs along the top of the bumper and pull straight out.



9. Remove the factory fog lamp by unplugging the harness. Then depress the tabs on the three push clips and pull the lamp straight out the front.

10. Install your new SS3 pod by pushing it directly into place. Be sure all three push clips seat fully, and are aligned correctly.

11. Plug the SS3 into the factory fog light harness using the included DT wire adapter. Test function. If the light does not turn on, try flipping the connector 180°.

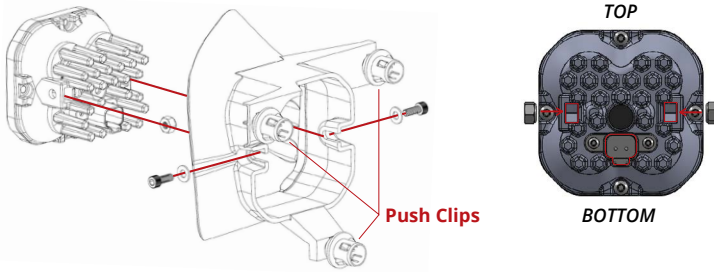
12. Adjust and aim the fog light according to your local and state laws. To adjust, loosen the screws on the side of the bracket, aim, and re-tighten. In general fog lamps should be angled slightly downwards to illuminate the area directly in front of the vehicle, below the headmaps.

13. Repeat steps ten through twelve for the other side. Then reinstall the bumper, grill, and cover panel.

See back for steel bumper specific instructions.

RAM 1500 & HD STEEL BUMPER

INSTRUCTIONS BELOW ARE FOR THE RAM 1500 & HD WITH STEEL BUMPER ONLY:



Driver/Left Side (opposite for passenger/right side)

1. Install the supplied nuts into the pod housing with the nylon lock ring facing inward. Attach the bracket to the pod using the supplied screws and washers. See diagrams above. The screws will also determine the aim of your SS3 pods. Ensure that the screws are tightened such that the pod retains its position, but can pivot with force for aiming.



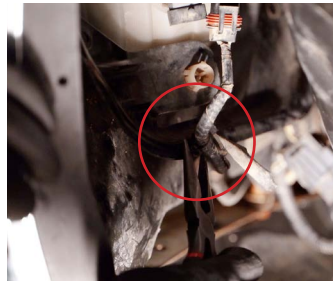
2. Using a 10mm socket, remove the bolt on the inner fender liner.



3. Gently pull the inner fender liner away from the bumper to access your factory fog lights.



4. Unplug the factory fog light harness and remove the three 10mm bolts holding the bracket onto the back of the bumper.



5. Using a pair of needle nose pliers, gently pinch and disconnect the clip holding the factory fog light harness onto the bracket.

This clip will be reused.



6. Remove the factory fog light assembly from the bumper.



7. Using a pair of needle nose pliers, remove the plastic push clips holding the factory fog light onto the metal bracket.



8. Attach your new SS3 pod to the factory metal bracket. Be sure all three push clips seat fully, and are aligned correctly.



9. Reinstall the assembled SS3 pod and metal bracket onto the bumper using the three 10mm factory bolts.

10. Reattach the clip holding the factory fog light harness onto the metal bracket. Then plug the SS3 into the factory fog light harness using the included DT wire adapter. Test function. If the light does not turn on, try flipping the connector 180°.

11. Adjust and aim the fog light according to your local and state laws. To adjust, loosen the screws on the side of the bracket, aim, and re-tighten. In general fog lamps should be angled slightly downwards to illuminate the area directly in front of the vehicle, below the headlamps.

12. Then reinstall the fender liner. *Repeat steps for the other side.*

This installation guide is for the following SKUs:

DD6678 SS3 Sport Ram Horizontal Kit White SAE Driving
DD6679 SS3 Sport Ram Horizontal Kit White SAE Fog
DD6680 SS3 Sport Ram Horizontal Kit Yellow SAE Fog

DD6681 SS3 Pro Ram Horizontal Kit White SAE Driving
DD6682 SS3 Pro Ram Horizontal Kit White SAE Fog
DD6683 SS3 Pro Ram Horizontal Kit Yellow SAE Fog

DD6714 SS3 Max Ram Horizontal Kit White SAE Fog
DD6715 SS3 Max Ram Horizontal Kit Yellow SAE Fog