

Kit Includes: One (1) or Two (2) LED Pods, Deutsch-style wire pigtail, mounting bracket, and hardware



Features

- Advanced TIR (total internal reflection) optics
- High intensity LED chips
- Back-lighting available in white, amber, red, and white*
- Durable powdercoated aluminum construction
- Integrated Deutsch-style connector
- Pin fin heatsink design

*The yellow lens option is only available with an amber backlight

Specifications

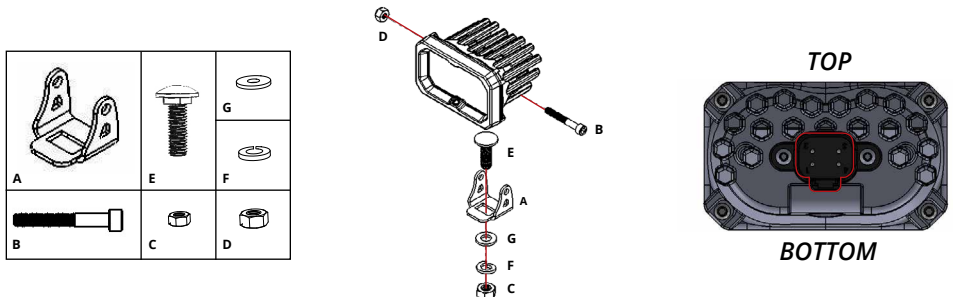
- Input Voltage: 9-16V
- Input Power: 7.7 watts (SSC2 Sport)
25.6 watts (SSC2 Pro)
- Current Draw: 0.6 amps @ 12.8V (SSC2 Sport)
2 amps @ 12.8V (SSC2 Pro)
- Operating Temperature: -40° to 185°F
- Weight: 1.1 lbs (single), 1.65 lbs (pair)

Wiring

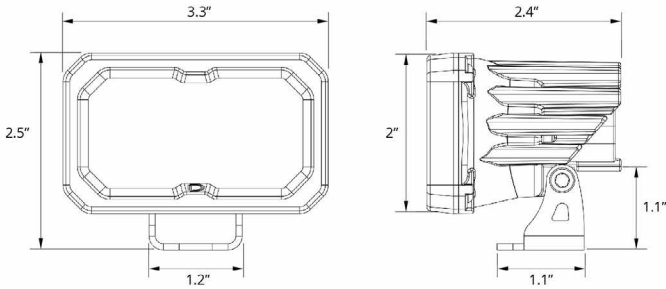
Connect the red wire to positive supply, and black wire to negative or common ground. Tap the blue wire for the backlight to your desired vehicle function. If you are using the pigtail, the yellow wire won't be used. **Please note:** This auxiliary lamp draws high current, and requires adequately-sized wiring for safe operation. If you are not using a Diode Dynamics wire harness, use wire sized 16 AWG or larger for main power and ground. Use wire sized 18 AWG or larger for the backlight (blue wire on the pigtail). Please be mindful of current ratings and wire size, especially if splitting power signals to multiple pods, or using switches. If you have any questions, please feel free to contact us for assistance.

Mounting

If you wish, you may use the included hardware to mount your pod. Fasteners are included. We recommend drilling a 3/8" hole to allow flush fitment of the bracket. The most common mounting style is shown below. Stage Series Pods are also compatible with most standard mounting brackets on the market.



Dimensions

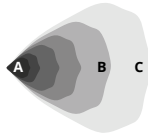
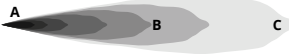


Output

Driving 

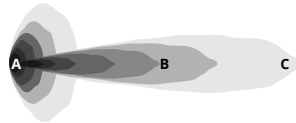
Fog/Wide 

Flood



Spot

Combo



A - lux at 10 meters
 B - Distance (m) with 1 lux
 C - Distance (m) with .25 lux

		SS _{C2} SPORT				SS _{C2} PRO				
		A	B	C			A	B	C	
Lens Color/Optics	cd*	Illuminance (lx)	Distance (m)	SKU	cd*	Illuminance (lx)	Distance (m)	SKU		
White Combo	16,264	163	128	260	DD6387	27,179	272	165	300	DD6408
White Driving	37,416	374	193	390	DD6381	58,650	587	242	480	DD6402
White Flood	373	4	19	40	DD6392	701	7	26	50	DD6413
White Fog	4,984	50	71	140	DD6384	8,543	85	92	180	DD6405
White Spot	90,907	909	302	600	DD6397	96,852	969	311	620	DD6418
Yellow Combo	13,534	135	116	230	DD6391	23,388	234	153	310	DD6412
Yellow Driving	26,910	269	164	330	DD6383	46,140	461	215	430	DD6404
Yellow Flood	317	3	18	40	DD6396	664	7	26	50	DD6417
Yellow Fog	4,385	44	66	130	DD6386	7,444	74	86	170	DD6407
Yellow Spot	59,793	598	245	490	DD6401	83,723	837	289	580	DD6422
* PEAK BEAM INTENSITY Measured Output Output Color White 870 lumens White 6000K White Yellow 780 lumens Yellow 3000K Yellow					* PEAK BEAM INTENSITY Measured Output Output Color White 1,990 lumens White 6000K White Yellow 1,860 lumens Yellow 3000K Yellow					



View other off-road lights made by Diode Dynamics on our website.