

## 2020+ GMC Sierra HD Sidemarker Installation Guide

Thank you for your purchase of this unique product for your GMC Sierra HD! These LED sidemarkers are a plug-and-play replacement for the factory fender lights, illuminating the entire width of the housing for a distinctive look and brighter appearance.

**Tools Needed:** T15 Torx Driver, T20 Torx Driver, Trim Removal Tool, Zip Ties (for sequential turn signal option only), and Pick Tool

### THE INSTRUCTIONS BELOW ARE FOR THE FRONT FENDER LIGHTS:



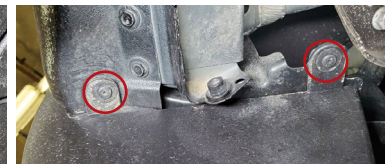
**2.** Remove the ten T15 Torx screws holding the fender liner in place.



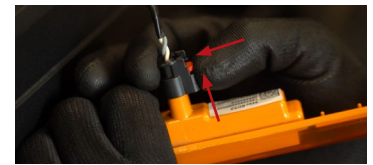
**3.** Using a trim removal tool, remove the one plastic push-rievet from the fender liner. Remove the fender liner from the vehicle.



**1.** Using a T15 Torx driver, remove the five screws holding the mud flap in place. There is no need to fully remove it. You may need to turn the wheel to gain access to the screws.



**4.** Using a T20 Torx driver, remove the two screws holding the factory sidemarker in place.



**5.** Remove the sidemarker by pulling it out through the front of the fender flare. Pull the red locking tab back and then depress the black tab to remove the connector.

**6.** If installing the **STANDARD SIDEMARKER**, simply reverse steps 1 through 5 with your new sidemarker to complete the installation.

**NOTE:** All four sidemarkers are the same.

**7.** If installing the **SEQUENTIAL SIDEMARKER**, choose which direction you would like the sidemarker to sequence. Use a pick or similar tool to slide open the purple lock tab on the 4-pin connector housing body. Insert the green wire into Pin 1 of the 4-pin connector to sequence Right-to-Left (passenger's side). Insert the green wire into Pin 4 of the 4-pin connector to sequence Left-to-Right (driver's side). Insert the included rubber terminal plug into the unused pin location in the 4-pin connector for weather sealing.

**NOTE:** Pin numbers are marked in fine print on the harness, inside of the connector.



**8.** From the wheel well, unplug the lower black connector from the headlight. To do so, slide the red tab back and then depress the black tab.



**9.** Plug the headlight connector into the included adapter harness and then plug the adapter harness into the headlight. Be sure to slide the red tab back.



**10.** Route the harness along the inside of the front fender flare. Secure to the original sidemarker input harness with zip ties.



**11.** Using a T20 Torx driver and original hardware, install your new sidemarker in the front fender flare.



**12.** Plug the first-in-line 4-pin connector into your new sidemarker.



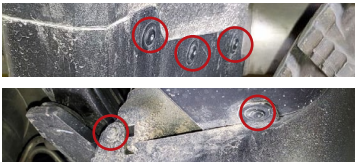
**13.** Route the adapter harness through the inside of the wheel well, securing it with zip ties such that it is away from any hot or moving parts.



**14.** Route the harness along the frame rail to behind the rear wheel of the truck, securing with zip ties along the way. Ensure the harness passes over the rear axle along the frame rail and is secured such that it cannot get pinched or caught in any moving parts.

*See back for further instructions.*

**THE INSTRUCTIONS BELOW ARE FOR THE REAR FENDER LIGHTS:**



**1.** Using a T15 Torx driver, remove the five screws from the mud flap in the rear wheel well.



**2.** Remove the rear-most mud flap by pulling down and tilting slightly outboard.



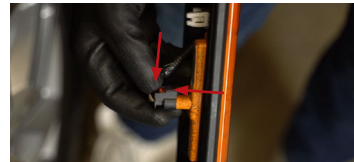
**3.** Using a trim removal tool carefully pry the rear fender flare off the bed. It is held in place by 22 plastic clips.



**NOTE:** These clips will be reused. However, ten replacement clips have been included in the event that some break while removing the fender flare.



**4.** Using a T20 Torx driver, remove the two screws holding the rear sidemarker in place.



**5.** Pull the red locking tab back and then depress the black tab to remove the connector.



**6.** Remove the sidemarker by pulling it out through the front of the fender flare.



**7.** If installing the **STANDARD SIDEMARKER**, simply reverse steps 1 through 6 with your new sidemarker to complete the installation.

**8.** If installing the **SEQUENTIAL SIDEMARKER**, choose which direction you would like the sidemarker to sequence. Use a pick or similar tool to slide open the purple lock tab on the 4-pin connector housing body. Insert the green wire into Pin 1 of the 4-pin connector to sequence Right-to-Left (passenger's side). Insert the green wire into Pin 4 of the 4-pin connector to sequence Left-to-Right (driver's side). Insert the included rubber terminal plug into the unused pin location in the 4-pin connector for weather sealing.

**NOTE:** Pin numbers are marked in fine print on the harness, inside of the connector.



**9.** Remove the OEM sidemarker harness from the fender flare. Pass the OEM harness back through the hole in the truck bed and secure in a bundle with zip ties.



**10.** Using a T20 Torx driver and OEM hardware, install your new sidemarker.



**11.** Pass the adapter harness through the hole in the bed and route along the fender flare using the path of the OEM harness.



**12.** Plug in your new sidemarker and move the locking tab to the locked position.

**13.** Reverse Steps 1 through 3 to reinstall the fender flare and mud flap.

**14.** Repeat both front and rear sidemarker steps for the other side of the vehicle to complete the installation.

**This installation guide is for the following SKUs:**

- DD5125** Sierra 2020 HD Standard Sidemarkers Clear (set)
- DD5126** Sierra 2020 HD Standard Sidemarkers Amber (set)
- DD5127** Sierra 2020 HD Standard Sidemarkers Smoked (set)

- DD5150** Sierra 2020 HD Sequential Sidemarkers Clear (set)
- DD5151** Sierra 2020 HD Sequential Sidemarkers Amber (set)
- DD5152** Sierra 2020 HD Sequential Sidemarkers Smoked (set)