

Wiring Instructions

8. First, connect the board connector to the Switchback driver output. Connect the Switchback driver input to the pigtail. Finally, tap the bare wires to the wiring harness. See Wiring Method Diagram below. **The black wire must be grounded before any function will work.**



DD WIRE	PIN	DRIVER WIRE	PASSENGER WIRE
BLACK	GROUND	BLACK	BLACK
WHITE	PARKING	BLUE	BLUE
RED	DRL	BROWN	BROWN
YELLOW	TURN SIGNAL	YELLOW	YELLOW

IMPORTANT: DO NOT plug the LED panel directly into pigtail without the driver. The LEDs must be plugged into driver first to control the power.

9. Mount driver and tuck all wires. Driver should be mounted outside of headlight for serviceability, in a location away from the engine block to avoid excessive heat buildup.

10. Test thoroughly, reseal headlight and reinstall onto vehicle.

DIODE DYNAMICS

PERFORMANCE LIGHTING TECHNOLOGY

2016+ Nissan Maxima Switchback LED Board Installation Guide



DIODE DYNAMICS

2016+ Nissan Maxima

Switchback LED Board Installation Guide

Thank you for your purchase of this unique product for your Nissan Maxima! With these modules, you will be able to convert your factory LEDs inside the headlight into a white running light, along with an amber turn signal feature. They are a direct replacement for the factory LED panels inside the light.



3 YEAR
WARRANTY



Please note: Headlights must be opened before proceeding with installation. Professional installation is strongly recommended. Please contact Diode Dynamics if you need assistance locating an installer.

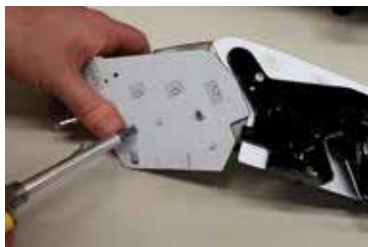
Tools Needed: Phillips Screwdriver



1. Remove the lens. To access the factory LED panels, remove the 3 Phillips screws holding the panels to the black plastic housing.



2. Unclip the factory connector and pull the LED panel housing straight out to remove it. Set the rest of the headlamp housing aside.



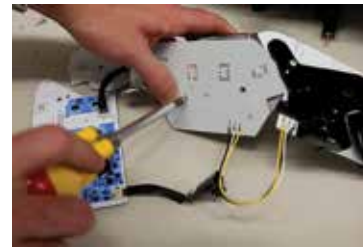
3. Looking at the LED panel housing, remove the 4 screws holding the factory LED panels to the chrome reflector housing. Lift the LED panels away from the reflector housing.



4. Next, remove the large panel from the black plastic holder it is attached to. The black plastic holder will be reused. After that, remove the large panel connector from the black plastic holder by depressing the large tabs on the gray connector.



5. Install your new Diode Dynamics LED boards by snapping the large board into the black plastic holder.



6. Using the alignment pins, reinstall the large LED panel back in the chrome reflector housing. Replace the original screws. Again, using the alignment pins, install the small panel back in place using the original screws.



7. Route the switchback wire through the grommet in the headlamp by pushing the grommet to the side and feeding the wire through. Using the alignment pins, reinstall the reflector housing back in the headlamp ensuring any extra wires are out of the way and the light pipe is back in its original position. Replace the original screws. Finally, replace the lens and repeat for the other side.



Check out the collection of custom and factory fog lights we offer.