



COLD AIR INTAKE

INSTALLATION INSTRUCTIONS

D760-0038 Fits:

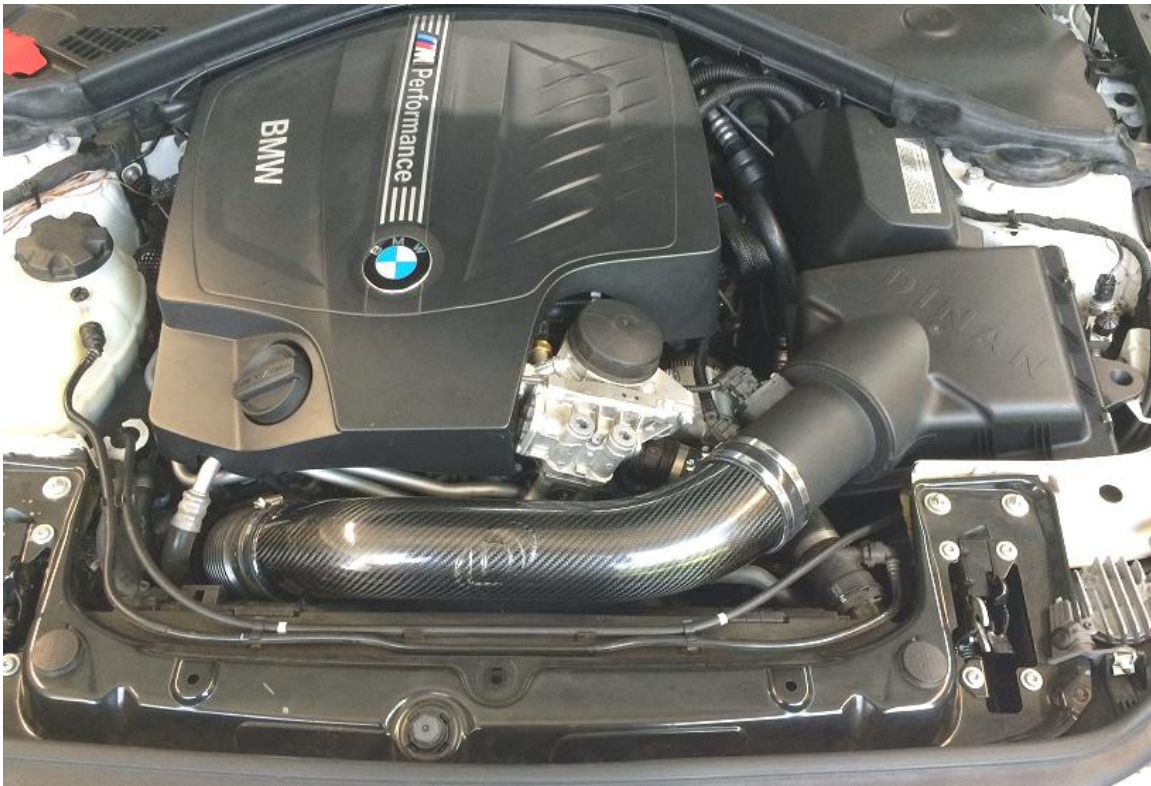
- 2012-2015 F30 335i
- 2013-2015 F30 335i xDrive
- 2014-2015 F34 335i xDrive Gran Turismo
- 2014-2015 F32 435/435i xDrive
- 2014-2015 F33 435i Convertible/435i Convertible xDrive
- 2014-2015 F36 435i Gran Coupe
- 2015 F36 435i xDrive Gran Coupe
- 2014-2015 F22 M235i
- 2015 F22 M235i xDrive Coupe
- 2015 F23 M235i Convertible
- All (w/ M-Perf) of the above

PARTS LIST

(1) Airbox Lid/MAF	(D762-0203)
(1) Carbon Tube	(D762-0197)
(1) Air Filter	(D401-0020)
(1) Silicone Hose	(D762-0198)
(1) Hardware Kit	(D763-0155)

Congratulations for being selective enough to use a Dinan High Flow Cold Air Intake. We have spent many hours developing this system to assure that you will receive maximum performance and durability with minimum difficulty in installation.

Please take the time to read these instructions thoroughly before proceeding. When performing the installation, read the entire numbered instruction before working on the car. If you feel that you do not have the requisite skill, please arrange for a qualified repair facility to perform the installation.



INSTALLATION INSTRUCTIONS

Disassembly

1. Make sure the car is completely off (electronically) so as to not trigger any faults when electronic circuits are temporarily severed.
2. Open hood and release the 4 clips at the perimeter of the airbox. See Figure 1.



3. Gently unplug both the MAF sensor connection from the MAF sensor and the fuel tank breather valve. Some cars do not have this valve. See Figure 2.



4. Loosen the band clamp shown in Figure 3. Remove OEM intake lid/tube by pulling up off of the rubber bushing.



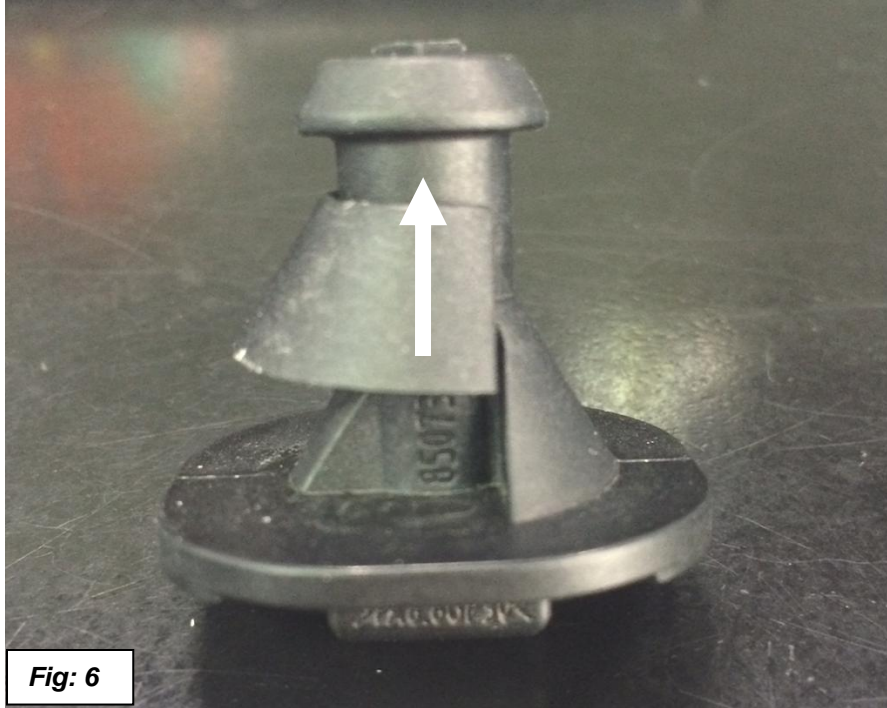
5. Remove lower airbox by gently lifting up. Remove filter. See Figure 4.



6. (Optional) Remove rubber bushing from plastic anchor. Note this will be done in car. See Figure 5.



7. (Optional continued) Slide plastic up as shown in Figure 6. Rotate entire unit 90 degrees and remove from car.



8. Clean out track in lower air box. See Figure 7. Insert adhesive gasket into lower air box track. Peel off adhesive backing paper before installing. Trim gasket as necessary to fit.



9. Remove the 4 clips from the lower airbox and install the 4 smaller clips supplied in the hardware kit. See Figure 8.

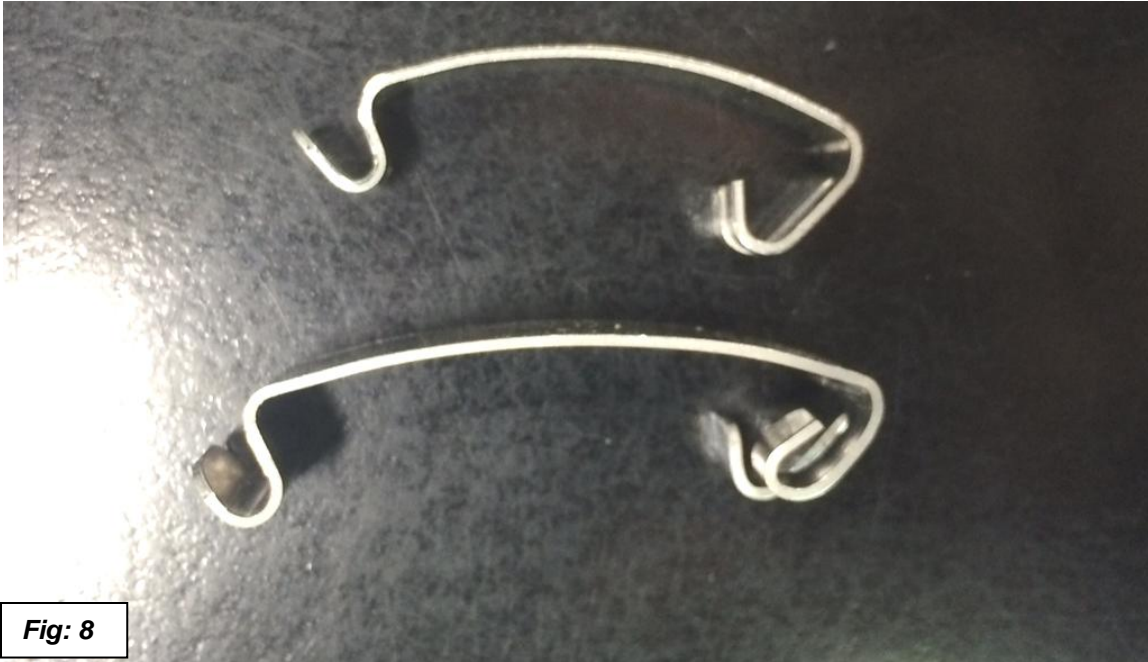


Fig: 8

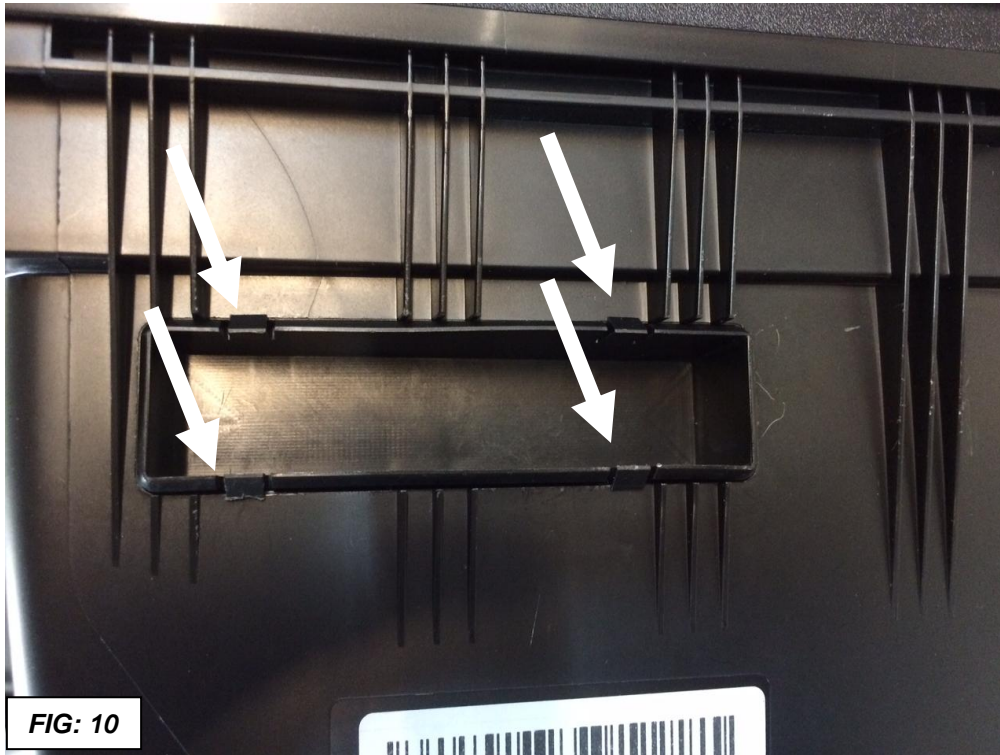
10. Check your lower airbox to see if your car is equipped with a snow valve (part of BMW's "Winter Package"). See Figure 9. If you have the snow valve, remove and use the associated parts in the hardware kit shown in



Fig: 9

Figure 12. ***Please note that removal of the snow valve may affect engine performance in extreme winter conditions.**

11. Remove the snow valve from the inside of the airbox by pinching the clips on the outside. See Figures 10 & 11.



12. Align cover plate as shown in figure 12. The shape will automatically index off of the ribs on the airbox. Pay attention to hole orientation.



13. Using the cover plate as a drill template, drill the four hole pattern into the airbox using a #30 size drill bit. Install the 4 blind rivets in the hardware kit from the outside of the airbox.
14. Reinstall the lower airbox into the engine bay. Make sure the lower airbox seats properly into the rubber bushings.
15. Remove the MAF sensor from the OEM airbox and install on the Dinan airbox lid/MAF. See Figures 10&11. Also, if your car does not have a fuel tank breather valve use the vinyl cap supplied in the hardware kit to seal the port.

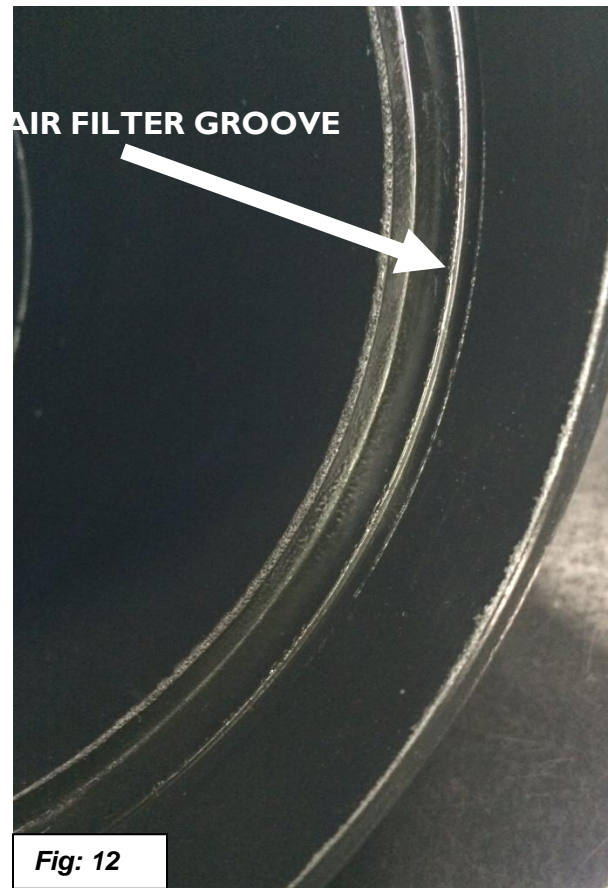


Fig: 10



Fig: 11

16. Install Dinan Air Filter onto the Dinan Airbox Lid/MAF. Make sure the MAF ridge is properly seated in the air filter groove. Don't tighten clamp yet. See Figures 12&13.



17. Test fit upper air box lid on lower air box to make sure that the filter orientation is not causing misalignment between the air boxes. Rotate filter

as necessary to clear lower air box. Once the correct orientation is found, tighten clamp with 8mm wrench.

18. Install Dinan box onto lower airbox snapping the 4 clips into position. Connect the MAF plug to the MAF sensor. Connect the fuel take breather valve if applicable. See Figure 14.



19. Install the carbon tube. Do not tighten clamp yet. Slide silicone hose over the end of the carbon tube. Align the axis of the carbon tube with the axis of the MAF and slide the silicone hose over the MAF as well. Once the parts are properly oriented tighten the hose clamps on the silicon hose. Then tighten the hose clamp at the base of the carbon tube.
20. Your installation is complete!