



Installation Instructions

D660-0085 / D660-0085-BLK
BMW M340i EXHAUST

Document Revision: A
Release Date: March 18, 2020

Table of Contents

Parts List.....	2
Removal of Stock System	3
Installation of Wiring Harness.....	4
Installation of Inlet Pipes	8
Installation of Dinan Muffler	9

Thank you for being selective enough to choose a Dinan Performance Exhaust System. The Dinan Engineering Team has spent many hours developing this product to assure that you will receive increased performance, durability and an aesthetic design that you as a customer will be able to enjoy for many years. Ease of installation and maintenance is important to us and has been highly considered throughout the design process.

Prior to performing the installation, familiarize yourself with these instructions as it should help you with the process. If you feel that you do not have the required skills or tools, please arrange for a qualified repair facility to perform the installation.

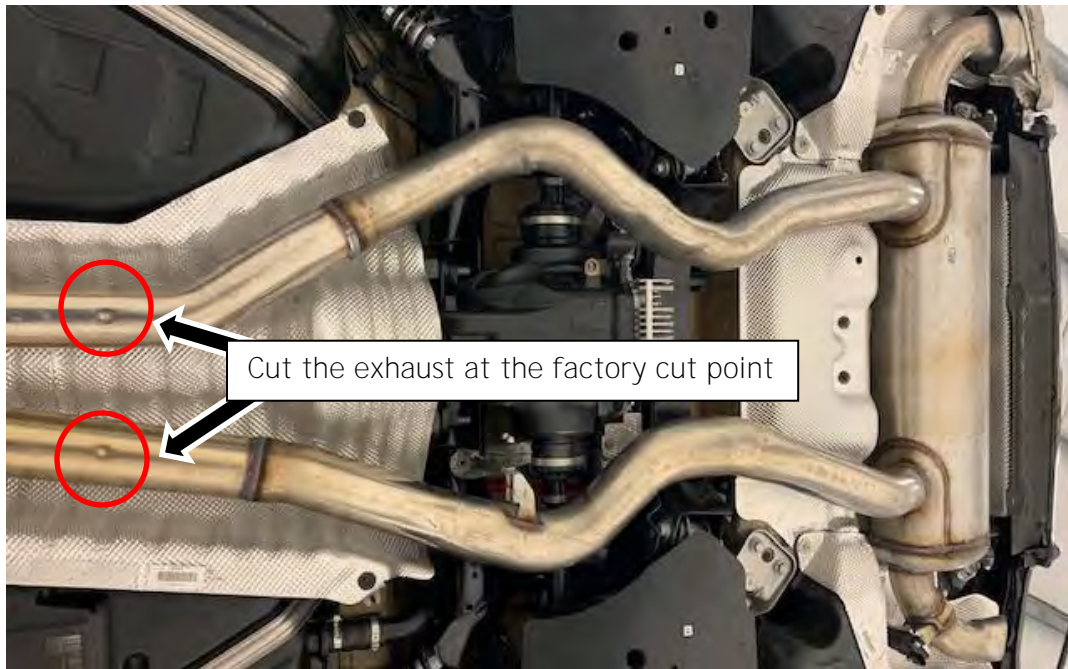
Again, thank you for choosing Dinan. Enjoy.

Parts List

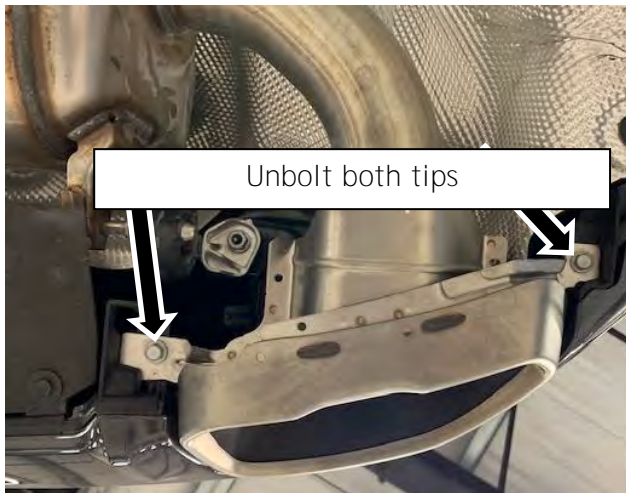
Quantity	Part #	Description
1	SD663-0354CW	Muffler Assembly
1	SD663-0354AW	Inlet Pipe; Left
1	SD663-0354BW	Inlet Pipe; Right
4	D663-0637 or -0638	Exhaust Tip
1	D663-0350	Hardware Kit; contains:
	4 D662-9237	3.00" Clamp
	2 D662-9242	Torca Clamp
	2 D662-9228	2.75" Accuseal Clamp
	2 D662-0433	Valve Mount
	2 D671-0189	M6 Locknut; Oval
	2 D671-0193	M6x20x1.0 Socket Head Bolt
	2 D671-0377	M6x12x1.0 Button Head Bolt
	2 M6 FLAT	M6 Flat Washer
	2 M6 WAVE	M6 Wave Washer
1	D663-0356	Exhaust Valve Actuator Kit; G20; contains:
	2 D661-0033	Exhaust Valve Motor
	2 D661-0032	Heat Shield; Exhaust Valve Motor
	2 D661-0031	Exhaust Valve Spring
	2 D662-0636	Wiring Extension Harness

Removal of Stock System

- 1) Support and cut the stock exhaust at the factory cut point.



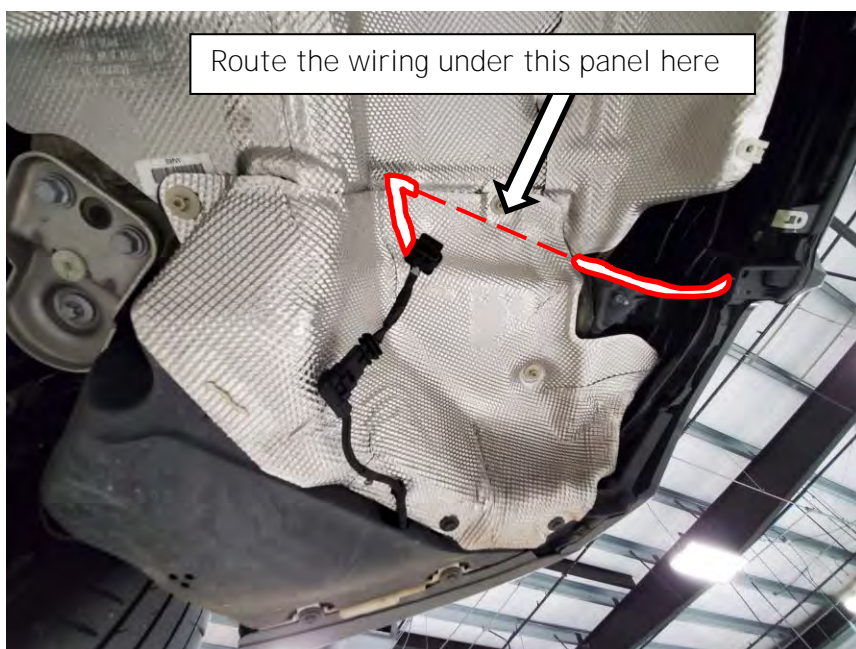
- 2) Remove both of the stock tips and unplug the exhaust valve.



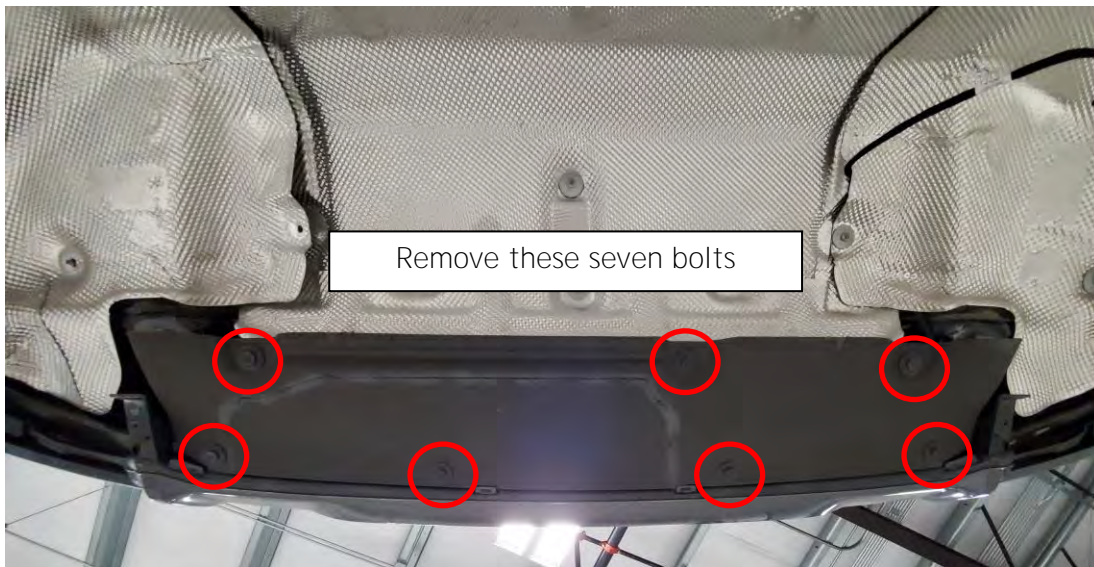
- 3) Unbolt the exhaust hangers and remove the stock muffler.

Installation of Wiring Harness

- 4) Loosen the passenger's side panel in the muffler cavity and route the wiring as indicated below.



- 5) Remove the rear black panel.



- 6) Route the wiring through the clips in the back bumper, above where the back panel mounts.



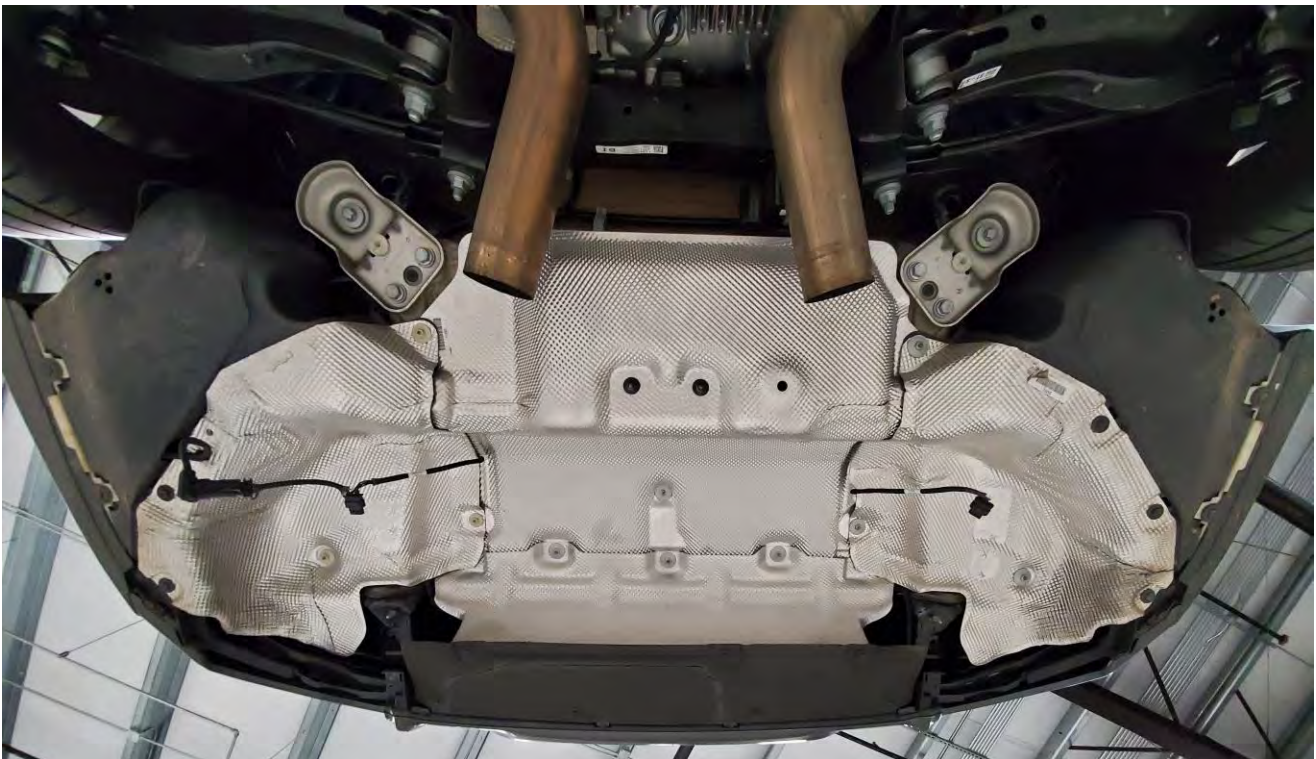
- 7) Loosen the driver's side panel and route the wiring as pictured below. Leave about 8 inches of wiring length on this side.



- 8) Secure the driver's side panel back in place. You may need to adjust this cable length later.

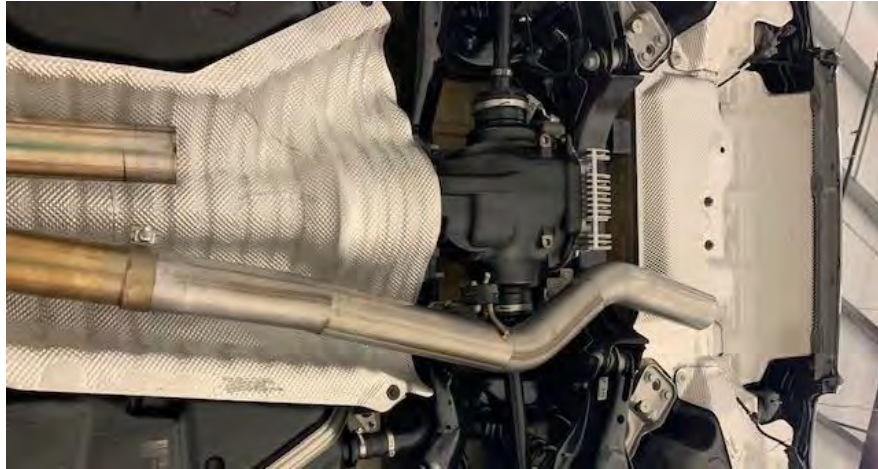


- 9) The muffler cavity should look like the picture below.



Installation of Inlet Pipes

- 10) Install the hangers onto the inlet pipes and install the inlet pipes. Loosely tighten the clamps, but do not fully torque yet.



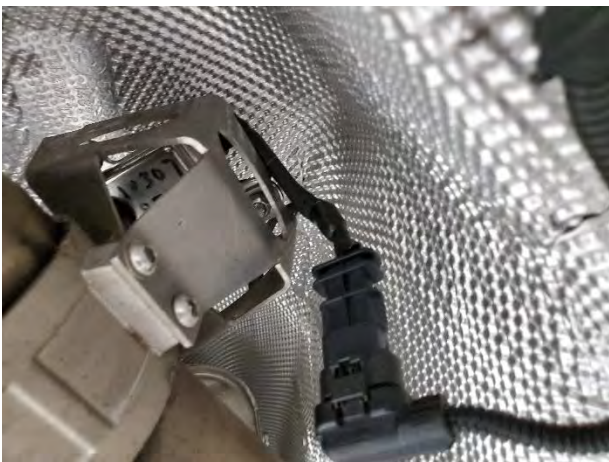
Installation of Dinan Muffler

11) Install the Dinan muffler by attaching the hangers and slipping the clamps over the inlet pipes.



12) Adjust the wiring length on either side to allow the valve motors to plug in. There should be sufficient slack on each side to allow for movement but without rubbing against or contacting anything.

Passenger's side:



Driver's side:



- 13) Once the wiring is adjusted, cable tie the newly installed exhaust valve cable in three places to the pre-existing cable in the rear bumper and trim the excess cable tie.



14) Reinstall the rear black bumper panel.

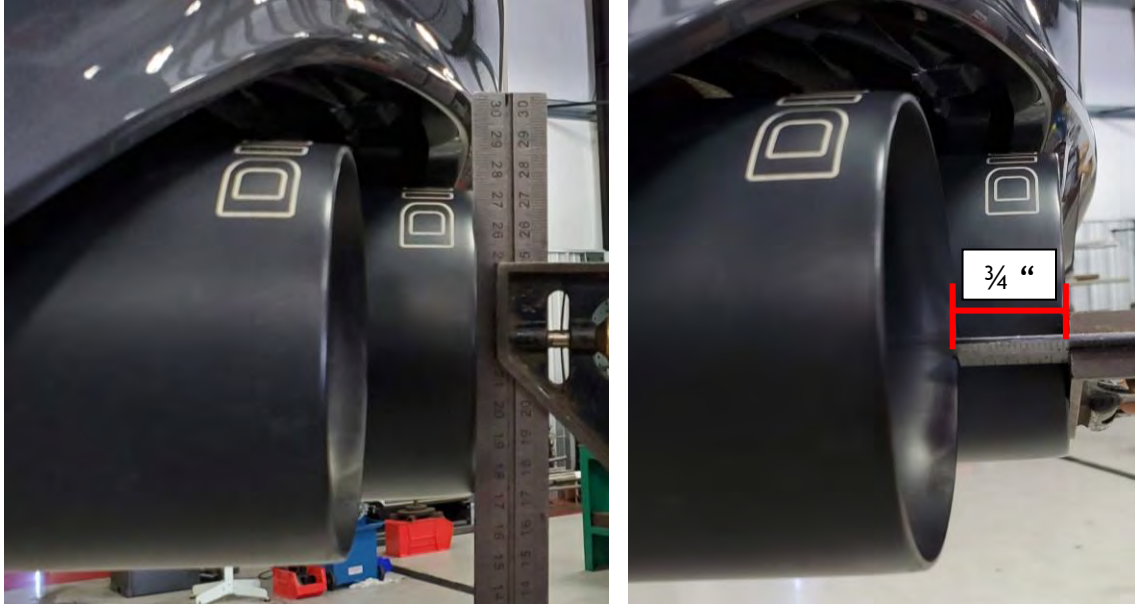


15) Push the muffler up and forward then torque the clamps. If the muffler contacts any part of the car, twist the inlet pipes to adjust. Allow for the pipe clearances as pictured below.



16) Install all four tips, but do not secure them in place yet:

- The inside tips should be flush with the rear bumper as pictured below.
- The outside tips should be offset **about 3/4"** from the inside tip.



17) After adjusting the tip length and alignment, make sure the second vertical line of the N in the Dinan logo is facing straight up on all 4 tips.



18) The exhaust tips should fit on both sides as pictured below:

