



Free Flow Exhaust Installation Instructions

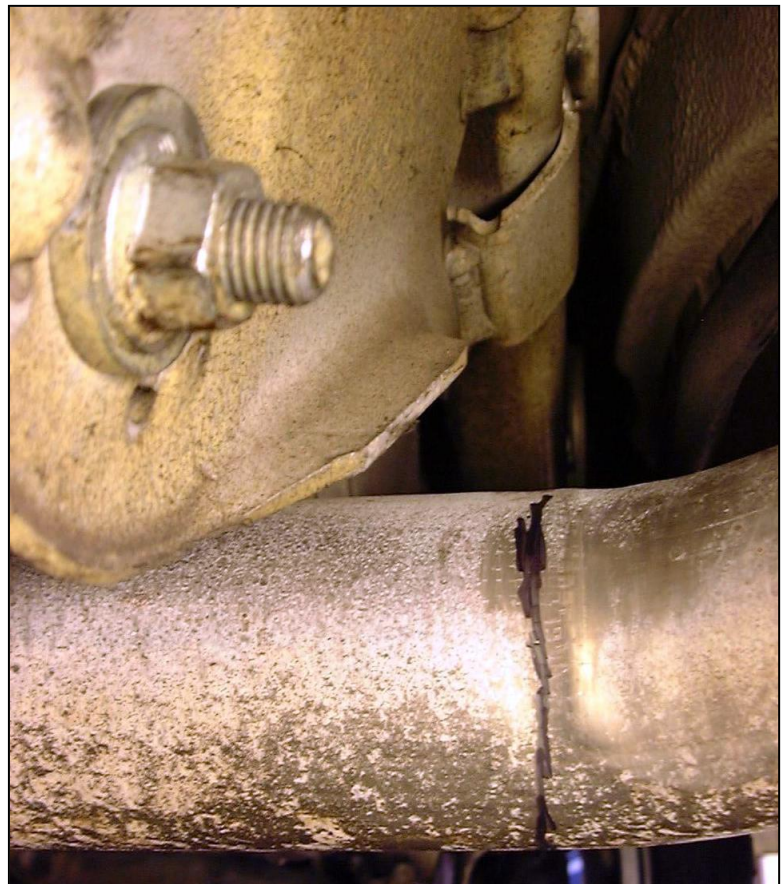
PART NUMBER D660-3928

APPLICATION: 1997 - 2000 528i (except wagon)
2001 - 2002 525i, 530i (except wagon)

Thank you for purchasing a Dinan High Performance Muffler! Some mechanical skill is required to install this muffler. If you are not familiar with this procedure, we strongly recommend that you arrange for a qualified BMW repair facility to perform this installation.

INSTALLATION:

1. Locate where the exhaust pipe starts to bend after the rear differential. **Mark** the tube 1/8" before this point. See photo. Hold the new muffler up under the old one, line up to the hangers and double check that you will have enough overlap to seal well (2.0" – 2.5"). Adjust cut line if needed. Cut the tube at this point



Stock exhaust system.

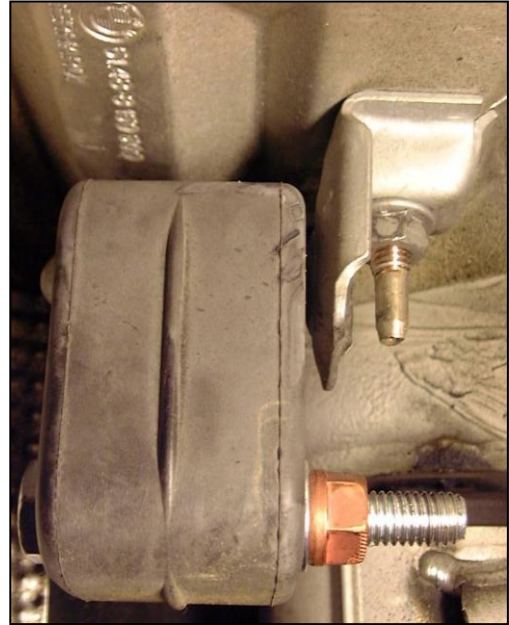
2. Remove the stock muffler by detaching the rubber hanger from the car.

3. Insert the Dinan-supplied bolt into the hanger with washers on either side of the hanger. Then install and tighten copper lock nut until it just makes contact with rubber.

4. Install the hanger onto the car.

5. Deburr the inside of the stock exhaust tube on the car and clean the outside surface to ensure a good seal.

At this point, determine whether the Dinan muffler will be clamped or welded.



6. Slide the Dinan muffler over the stock tube before placing it in position. Rotate the muffler into position.

7. Secure the muffler by reattaching the hanger on to the bolt and attach the second copper lock nut and tighten.

8. Visually inspect the muffler. Check for 1/2" clearance in all areas. Make sure the polished tips have at least a finger's clearance from the body.



Clamping Only

9. Tighten the clamp to 45 ft.-lbs.

Welding Only

***A MIG or TIG welder with stainless steel wire must be used.**

*The clamp alone may be removed by cutting the tack weld revealing four slots underneath **or** cut off the entire clamp assembly flush with the back of the clamp.*

Clean the surface of the stock exhaust tube where it is going to be welded.

9. Tack weld the Dinan muffler onto the factory exhaust tube in at least three places. Then weld all the way around the tube. Fill in all four slots if they are present.

Happy Motoring!