



## Free Flow Exhaust Installation Instructions

PART NUMBER    D660-0049  
                          D660-0049-BLK

APPLICATION:    2013-15 M6 (F12/13/FO6GC)

---

Thank you for purchasing a Dinan High Performance Muffler! Some mechanical skill is required to install this muffler. If you are not familiar with this procedure, we strongly recommend that you arrange for a qualified BMW repair facility to perform this installation.

### **INSTALLATION:**

1. The Dinan mufflers are relatively easy to install. They fit the same as a stock replacement muffler would. See figure 1.

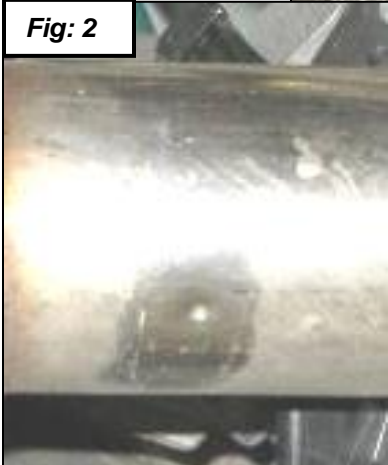
2.



Cut off the stock mufflers at the “Stock” punch marks as shown in figures below. Mark the cut line. Use a Sawzall or similar cutting tool. Figure 2 shows the punch mark on one of the tubes. Figure 3 and 4 show the cut locations on the tubes after the brace and before the mufflers.



**Fig: 3**

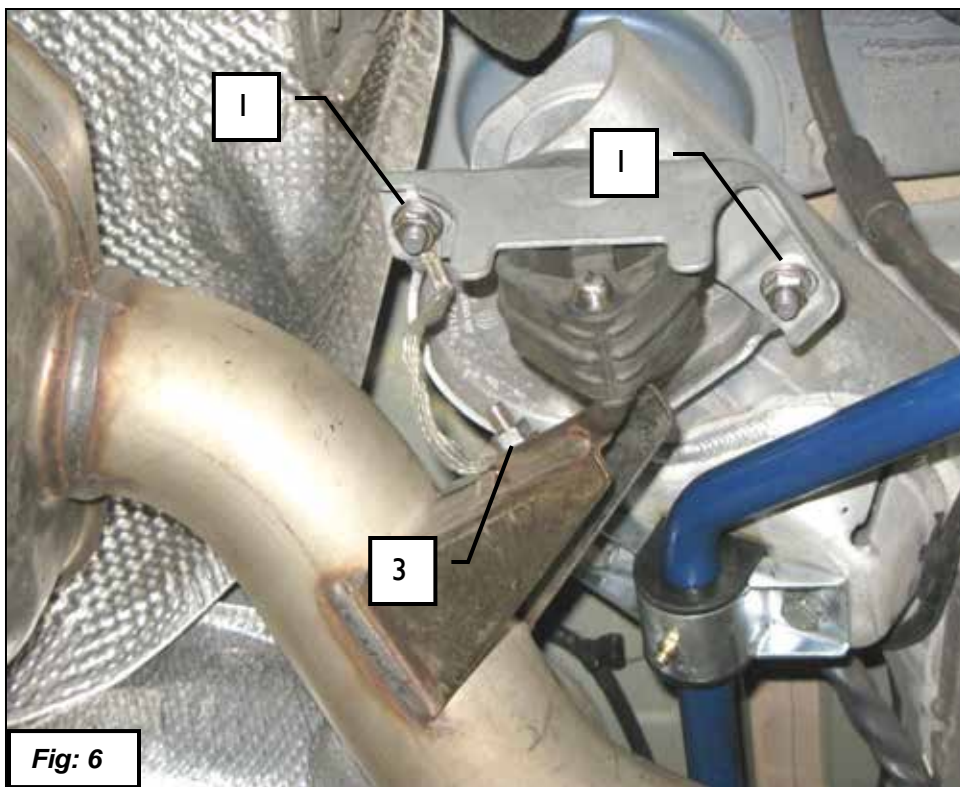
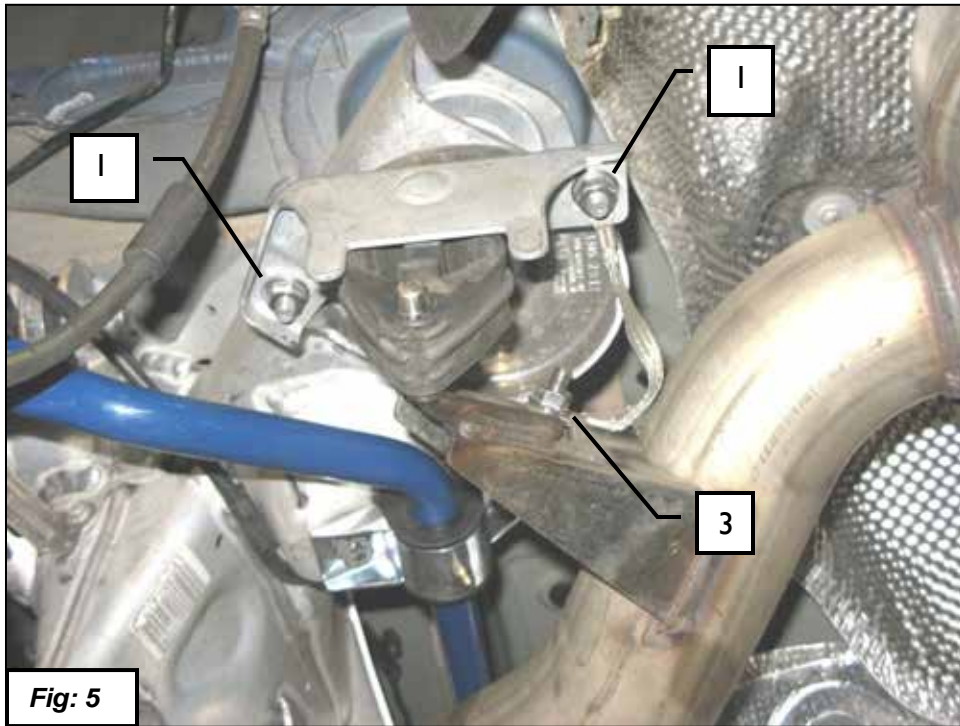


**Fig: 4**

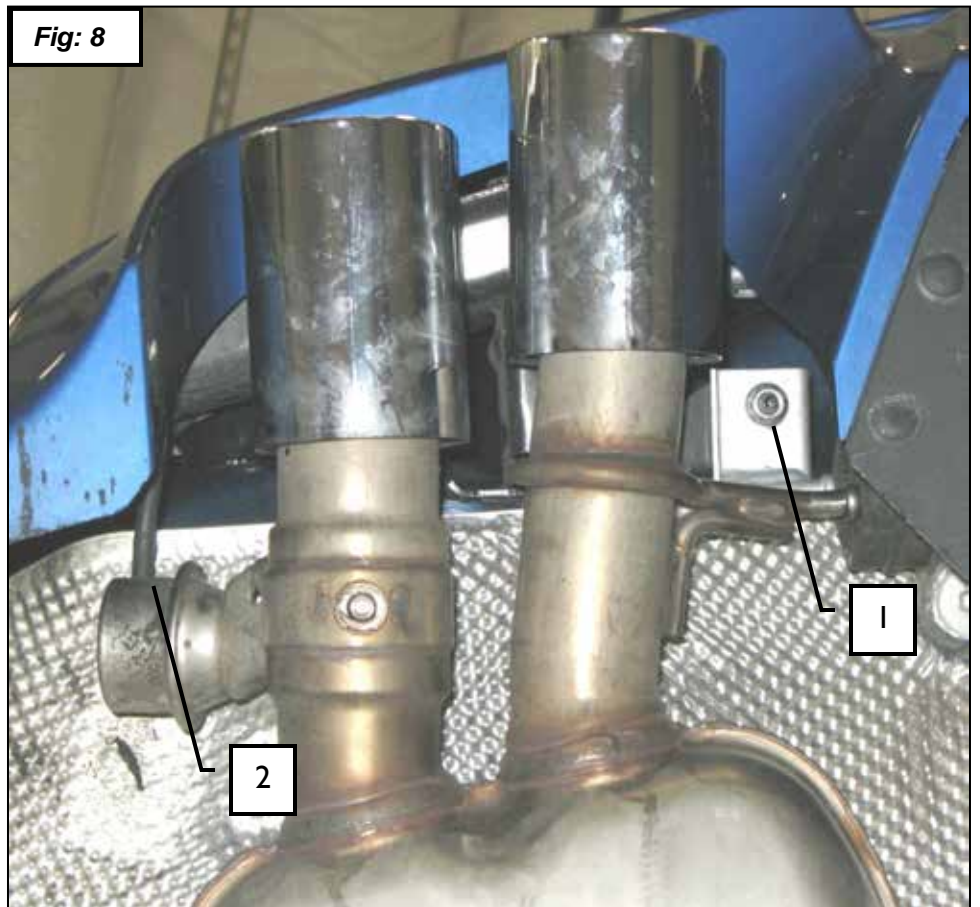
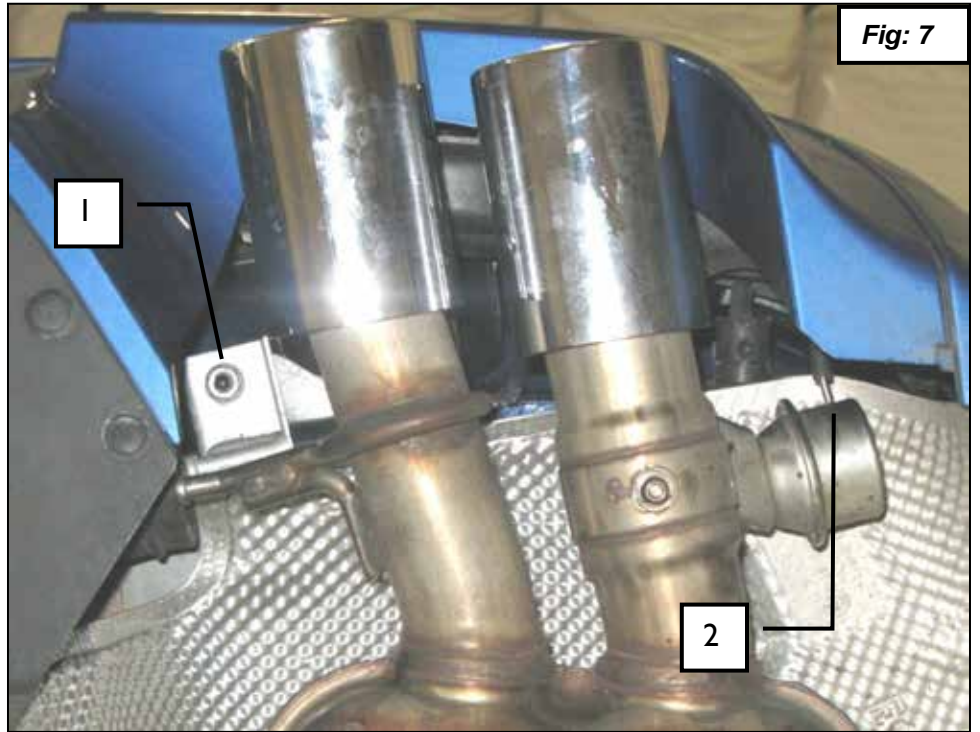




3. Support the stock muffler with a jack or stand.
4. Remove nuts (1) as shown in figures below.
5. Remove nuts (3) holding ground strap to muffler.

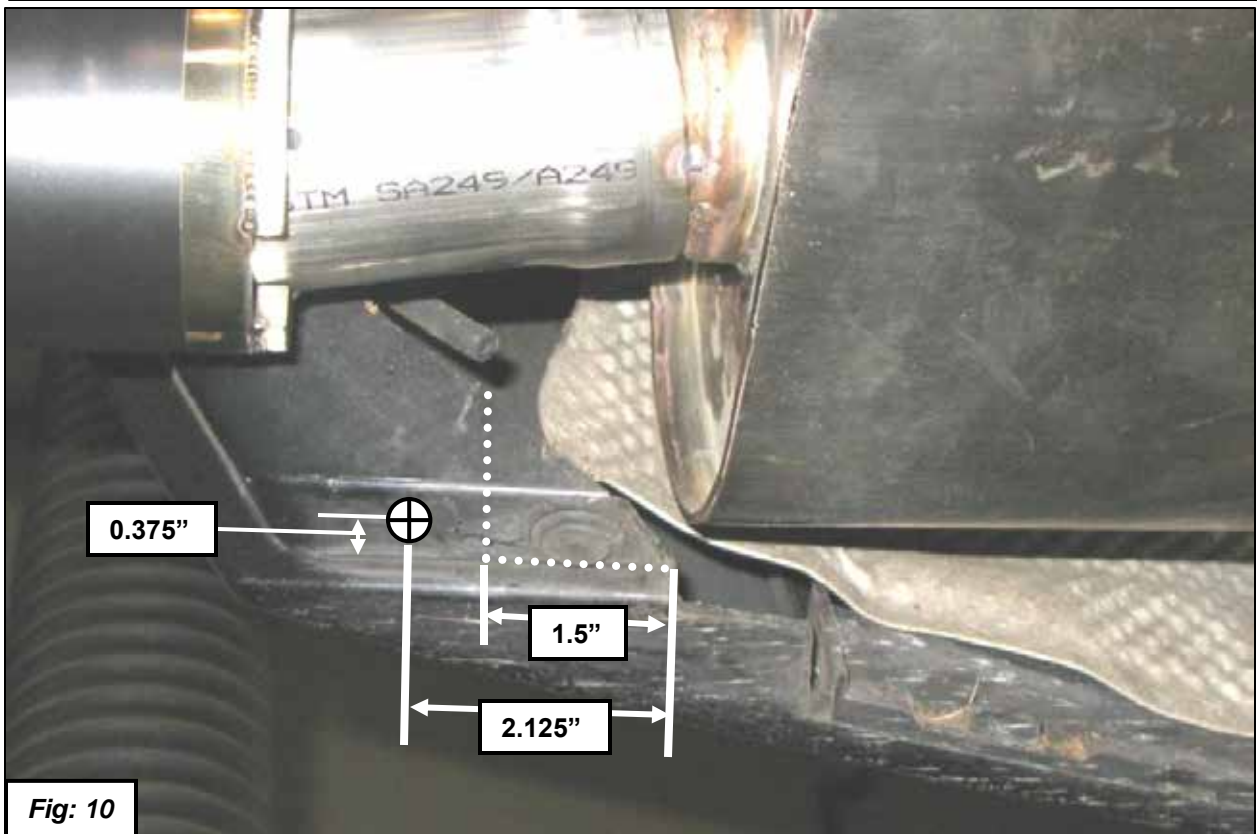
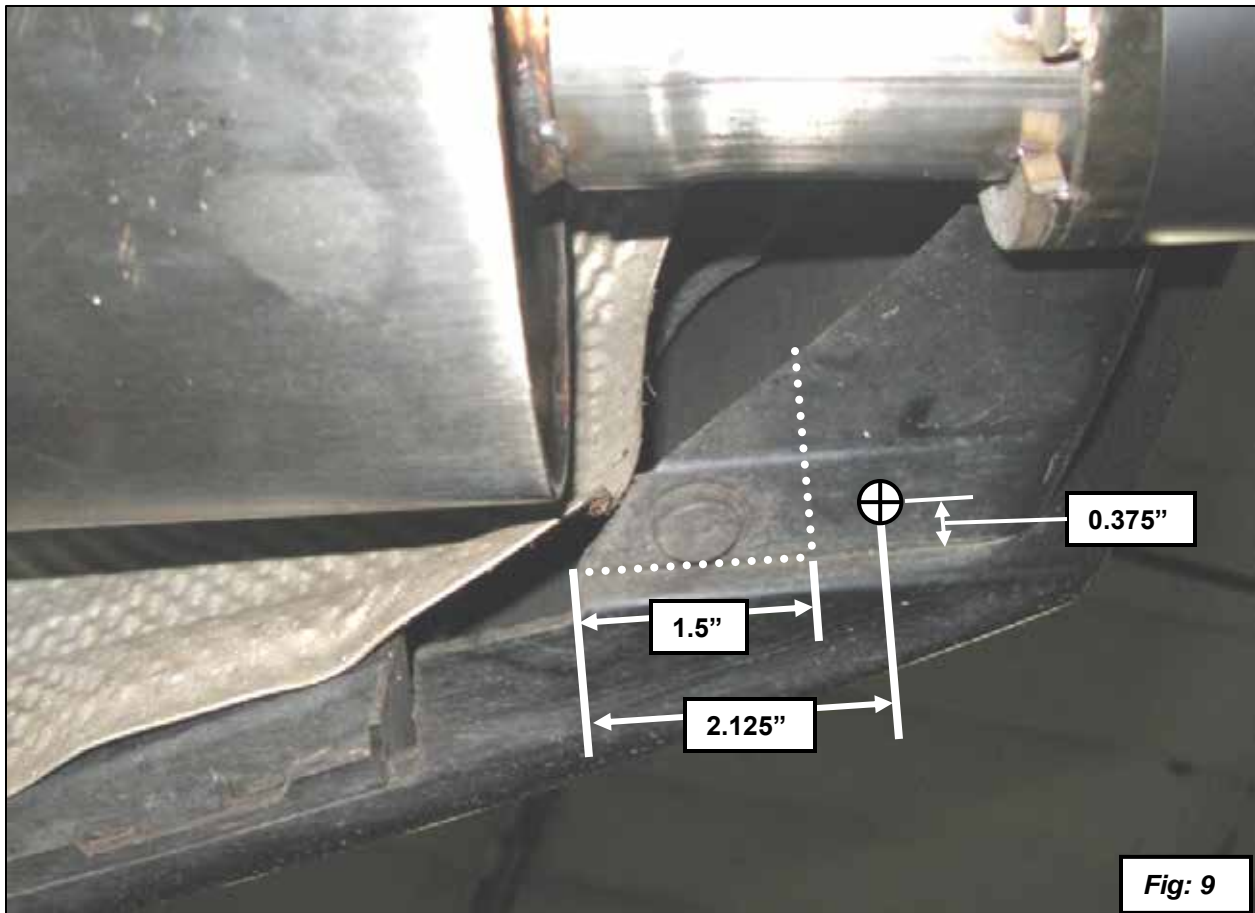


6. Remove nut (1) as shown. Detach vacuum hose (2).





7. You will need to trim the corners of the bumpers slightly for clearance as the exhaust will grow when hot. See figures 9, 10, 11 and 12.



You will need to add a bolt first then trim the plastic. Drill a 1/4" hole in the location shown in figures 9 and 10. Assemble the supplied bolts through the holes. Trim the bumper as shown. (Note the photos show the mufflers installed for reference.)



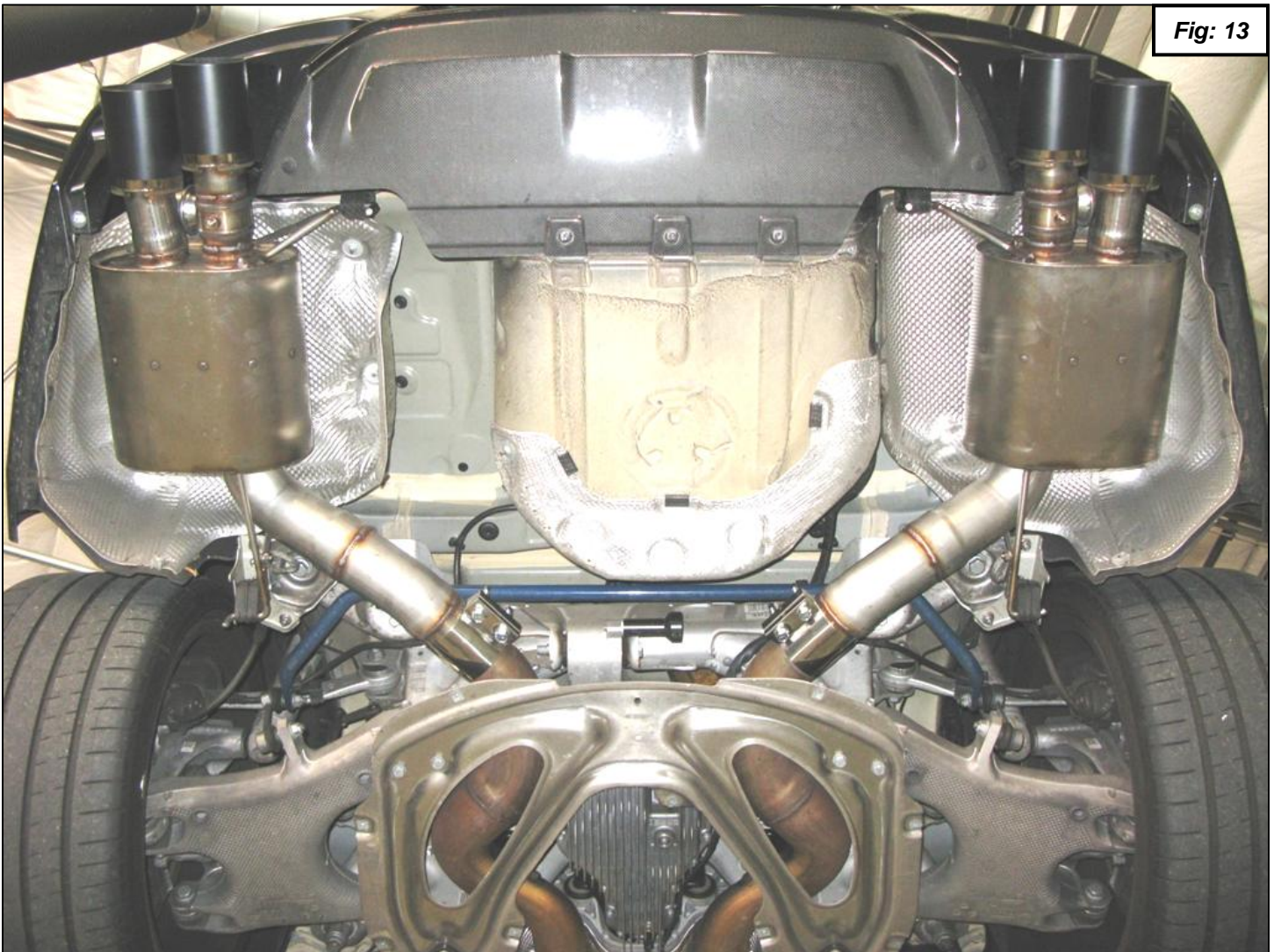
**Fig: 11**



**Fig: 12**



8. Transfer muffler hangers to new mufflers. Replace rubber hangers as needed.
9. Deburr the cut edges of the tubes on the car.
10. Slide clamping bushings over the tubes.
11. Install mufflers as shown.
  - Torque the hanger bolts to 22Nm (16 ft-lbs)
  - Center the mounting clamp and torque as follows:
    - Clamps with 10mm bolts = 45Nm (33 ft-lbs)
    - Clamps with 11mm bolts = 68Nm (50 ft-lbs)
  - Install tip -- When installing mufflers it helps to have someone center and level the tips in the bumper opening while you tighten the clamps.



12. Connect the vacuum hoses to the valves.

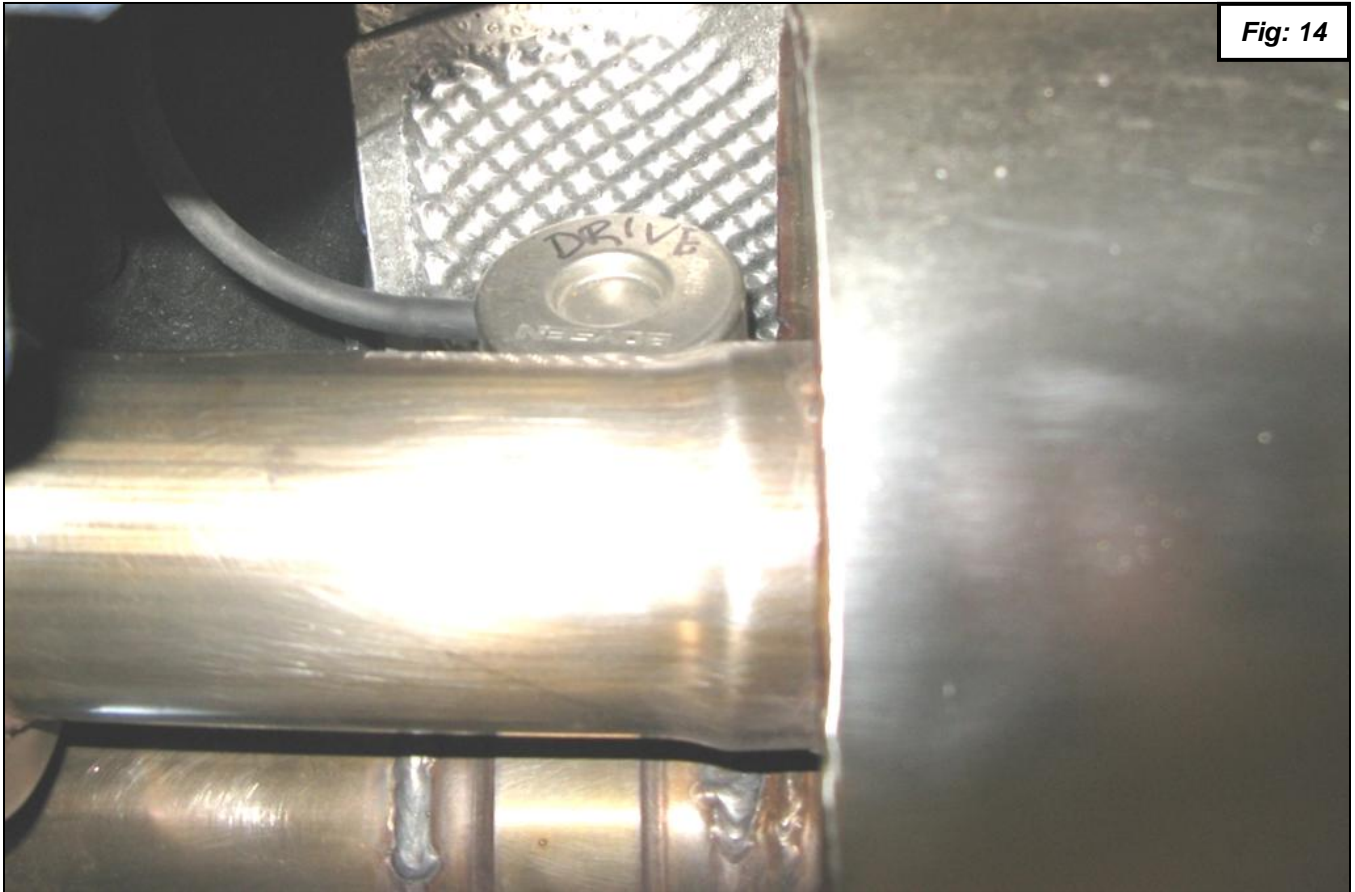


Fig: 14

13. Connect the ground straps to the mufflers.
14. Visually inspect the muffler. Check for at least  $\frac{1}{2}$ " clearance in all areas. You can bend the heat shields slightly if needed.

Happy Motoring!