



Free Flow Exhaust Installation Instructions

PART NUMBER D660-0045(-BLK)
 D660-0053(-BLK)

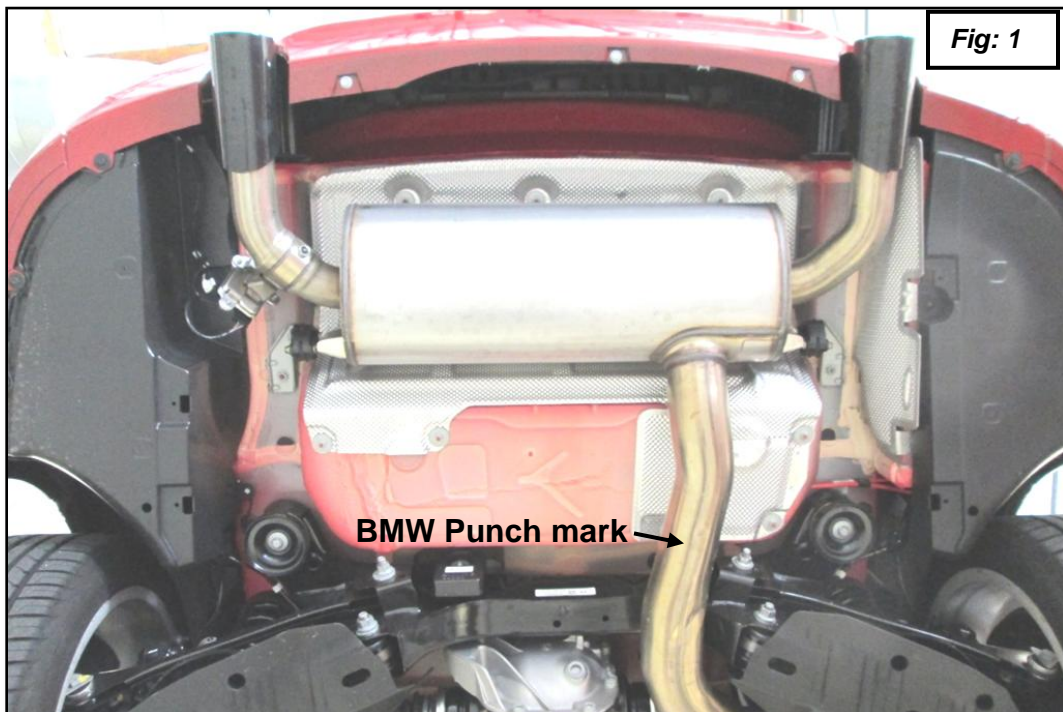
APPLICATION: 2012-15 335i and xDrive (F30)
 2014-15 335i GT xDrive (F34)
 2014-16 435i and xDrive (F32)

Thank you for purchasing a Dinan High Performance Muffler! Some mechanical skill is required to install this muffler. If you are not familiar with this procedure, we strongly recommend that you arrange for a qualified BMW repair facility to perform this installation.

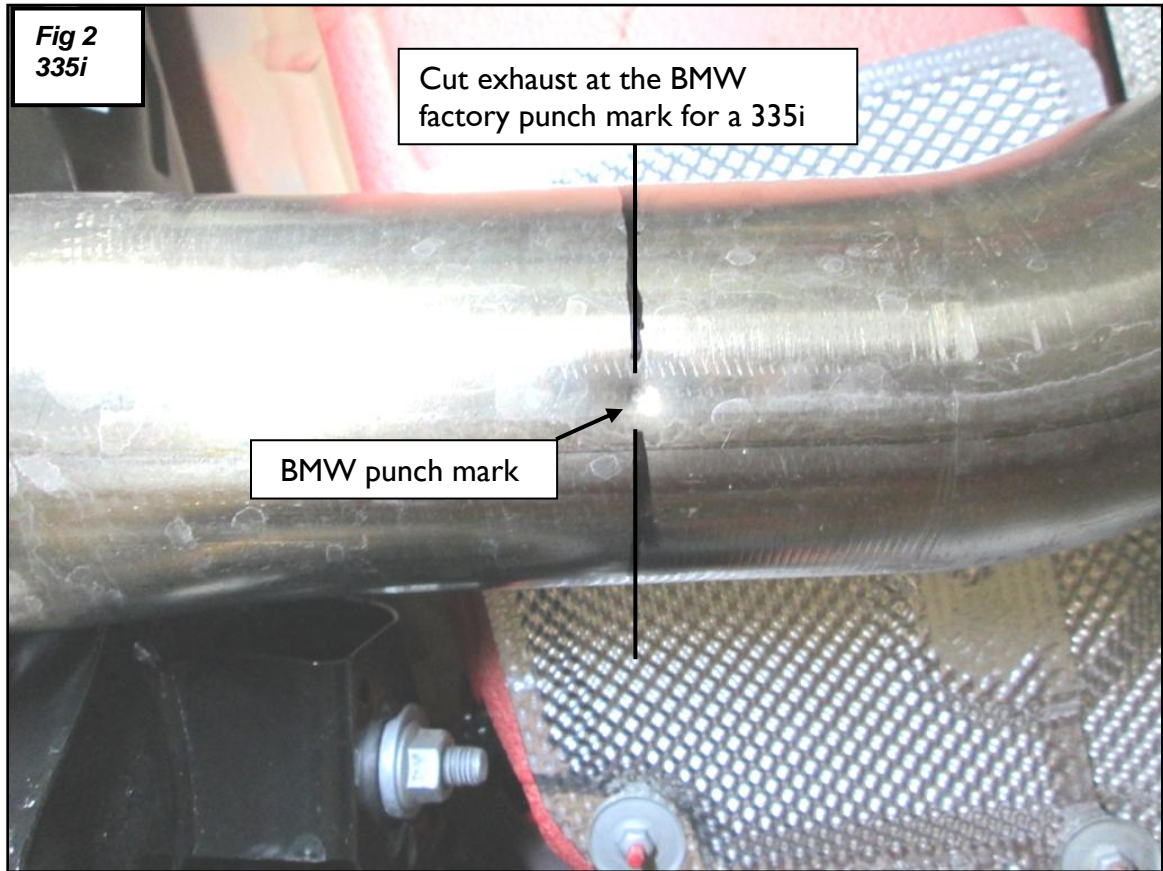
NOTE: the instructions for cutting the stock exhaust are different between the 335i and the 435i -- be sure you are using the correct cut point for the car you are working on.

INSTALLATION:

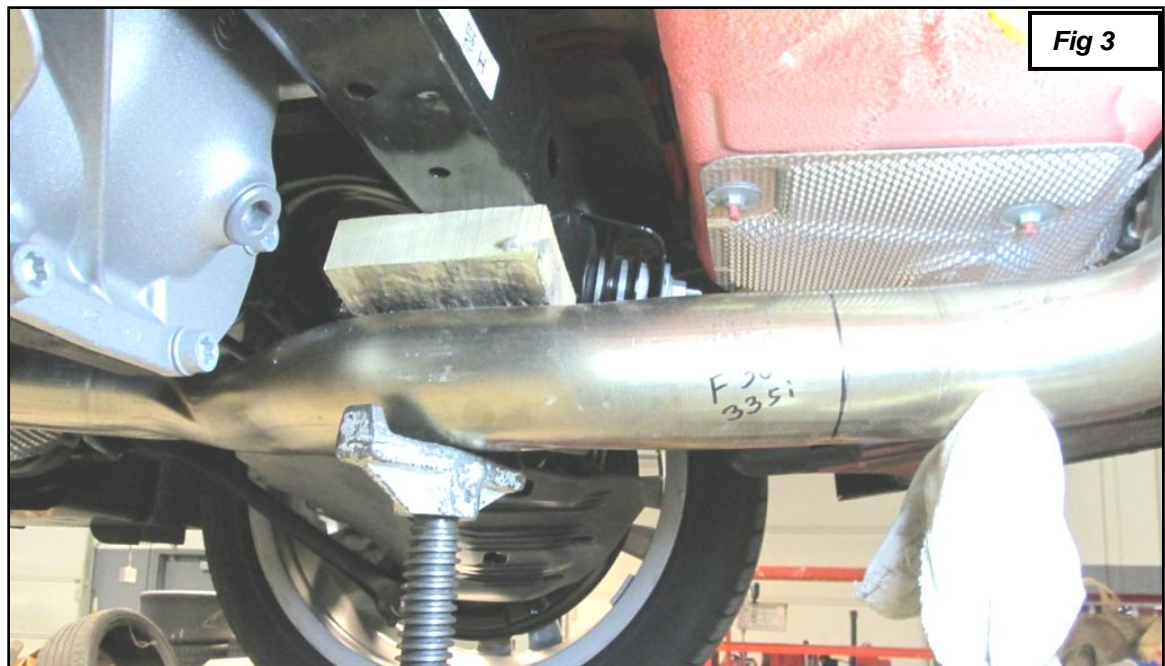
- I. The Dinan mufflers are relatively easy to install. They fit the same as a stock replacement muffler would.



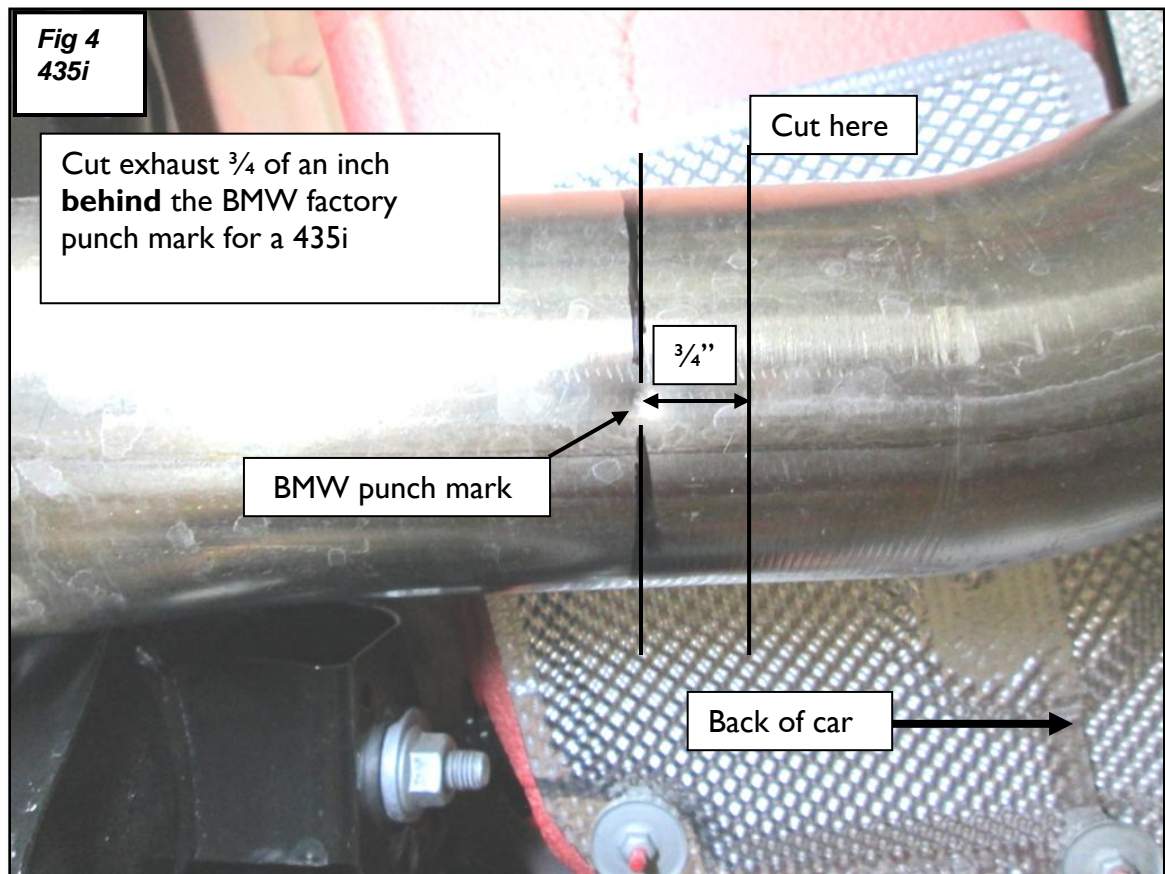
2. **This step applies to F30/F34 335i and xDrive only; skip to step #4 if you are working on a F32 435i.** For a 335i cut off the stock muffler at the punch mark as shown in figures 1, 2 and 3. Mark the cut line.



3. Support the stock muffler with a jack or stand. See figure 3. Use a Sawzall or similar cutting tool.



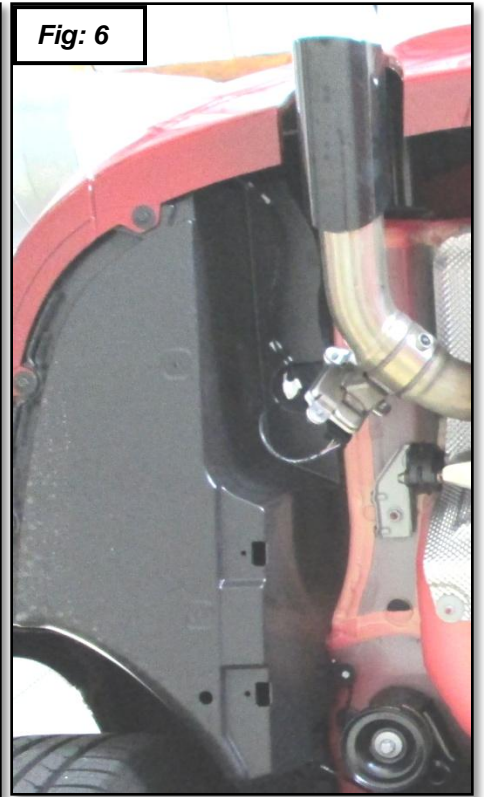
4. **This step applies to F32 435i and xDrive only; skip to step #6 if you are working on a F30/F34 335i.** For a 435i find the BMW factory punch mark on the exhaust. Measure $\frac{3}{4}$ of an inch from the punch mark toward the back of the car and cut at that point.



5. Support the stock muffler with a jack or stand. See figure 5. Use a Sawzall or similar cutting tool.



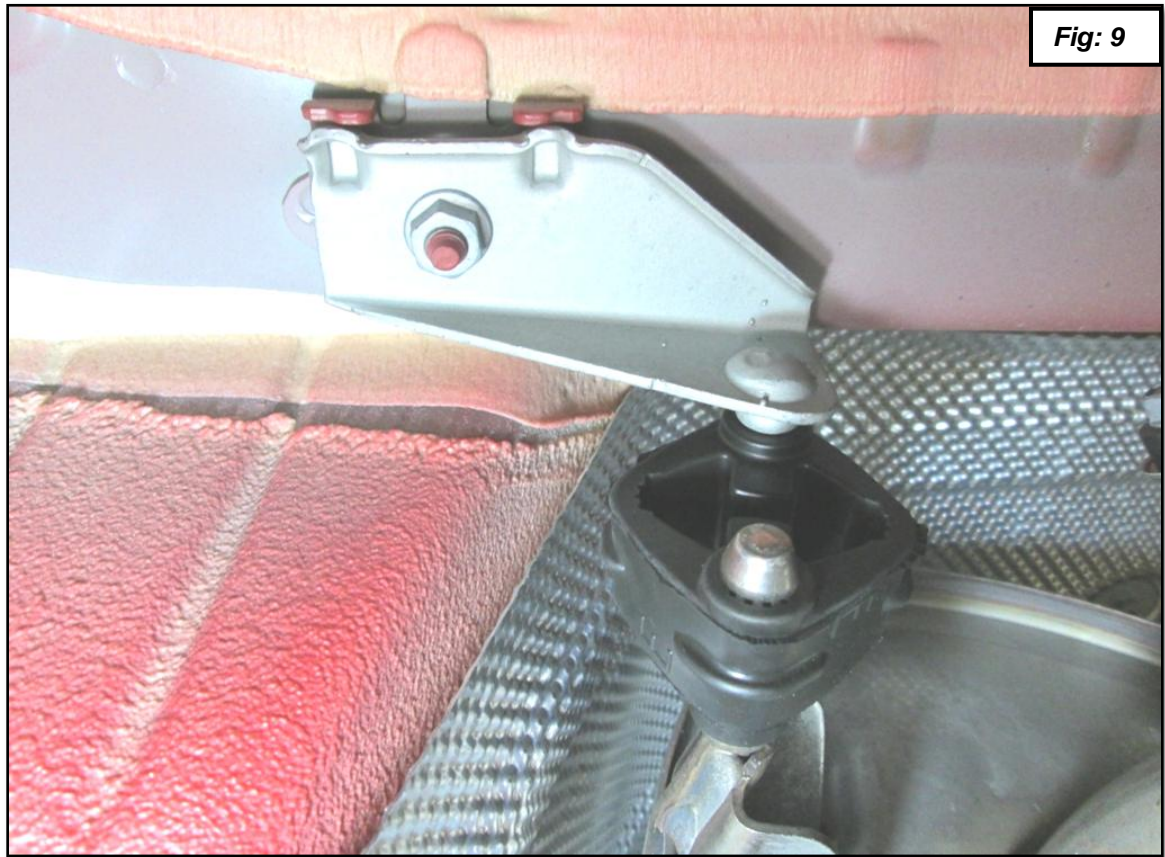
6. Remove the three screws holding the valve actuator to the valve. Remove the wire from the 2 clips holding it to the side cover. See figures 6 and 7.



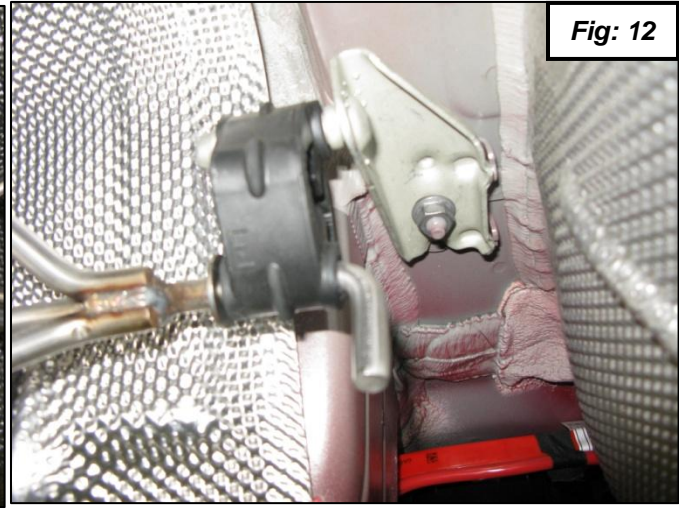
7. Remove the 3 screws and 1 nut holding the left inner body side cover and let it hang down to give you access to a spot to zip tie the valve out of the way as shown in figure. Position the actuator with the wire connector down and the shaft pointing to the inside as shown. Reinstall the side cover. See figure 8.



8. Remove nuts holding the hangers to the body as shown in figures 9 and 10 and remove the muffler.



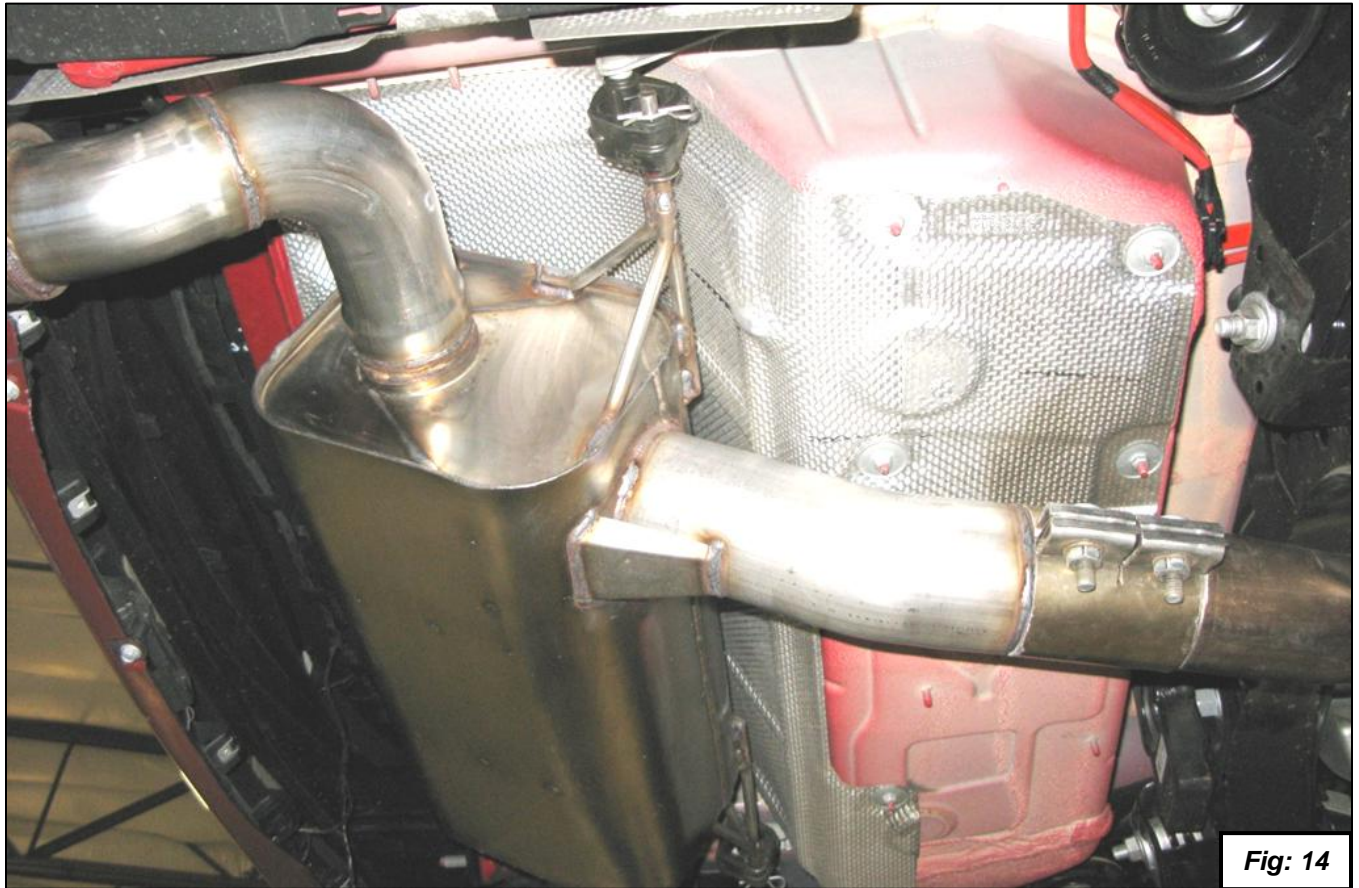
9. Transfer muffler hangers to new mufflers as shown in figures 11 and 12.
Replace rubber hangers as needed.



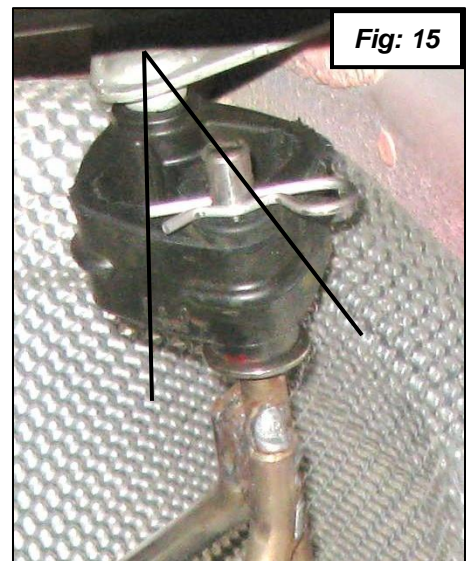
10. Deburr the cut edges of the tube on the car.
11. Slide clamping bushings over the tube.
12. Install muffler as shown (see figures 13, 14, and 15).
- Torque the hanger nuts to 19Nm.
 - Center the mounting clamp and torque as follows:
 - Clamps with 10mm bolts = 45Nm (33 ft-lbs)
 - Clamps with 11mm bolts = 68Nm (50 ft-lbs)
 - Installation tip -- when installing mufflers it helps to have someone center and push the tips all the way up in the bumper opening while you tighten the clamps.



13. There are several methods of hanger retention:
- If the muffler has holes for a locking clip on the hanger, the end of the clip should face forward.
 - If the hangers have threaded ends, please use the included lock nuts & large washers to secure the rubber hangers.
 - If you have the hangers with the 90° bend shown on the previous page, no further action is needed.



14. Visually inspect the muffler. Check for at least $\frac{1}{2}$ " clearance in all areas. You can bend the heat shields slightly if needed.
15. Happy Motoring!



Learn more about performance exhaust systems we have.