



DINAN

335i Upgrade Intercooler Installation Instructions

Part Number: D330-0013

**Applications: 2007-10 E90/E92/E93 335i/xi
(With M-Technic Bumper; except cars with Active
Cruise Control)**

PARTS LIST

<u>Qty</u>	<u>Part No.</u>	<u>Description</u>
1	D333-0006	Intercooler Assembly
1	D332-0029	Panel Spacer

Software download: After installing the Upgrade Intercooler you will be safe to install the Stage 3 software download, as long as you also have a Dinan oil cooler. If this kit is not installed at a Dinan dealer you can drive to the nearest Dinan Dealer to receive the tuning and boost increase that is optimized for your new Dinan Intercooler. It is safe to drive the vehicle with the Intercooler Upgrade to the dealer before the new software is installed.

Note: For maximum power output always use premium fuel. Unleaded racing fuel can be used on occasions such as track events when even more power is desired.

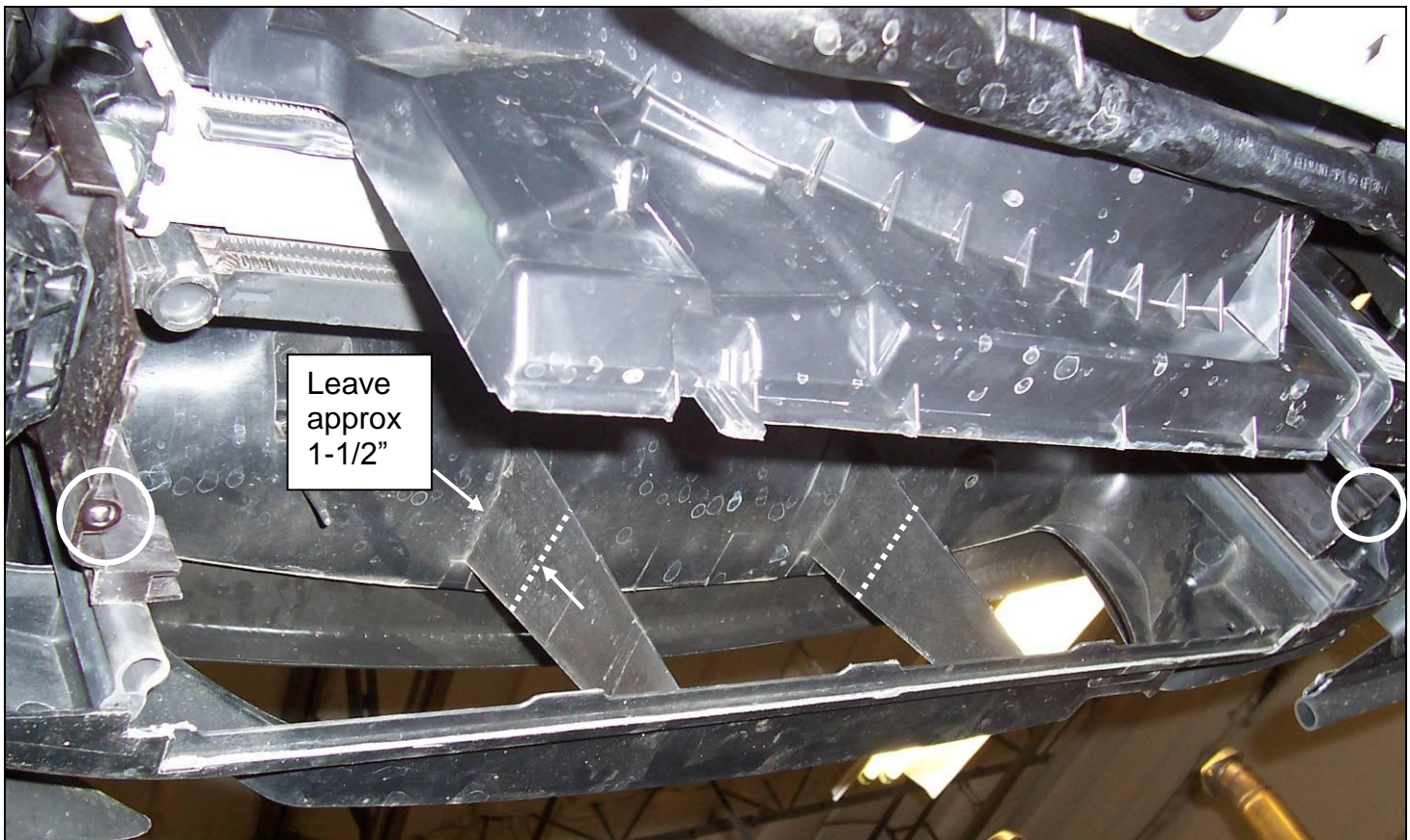
Note: This kit is designed for cars with a front M-Technic bumper. This kit will not fit cars equipped with standard or aftermarket bumpers.

REMOVE THE STOCK INTERCOOLER

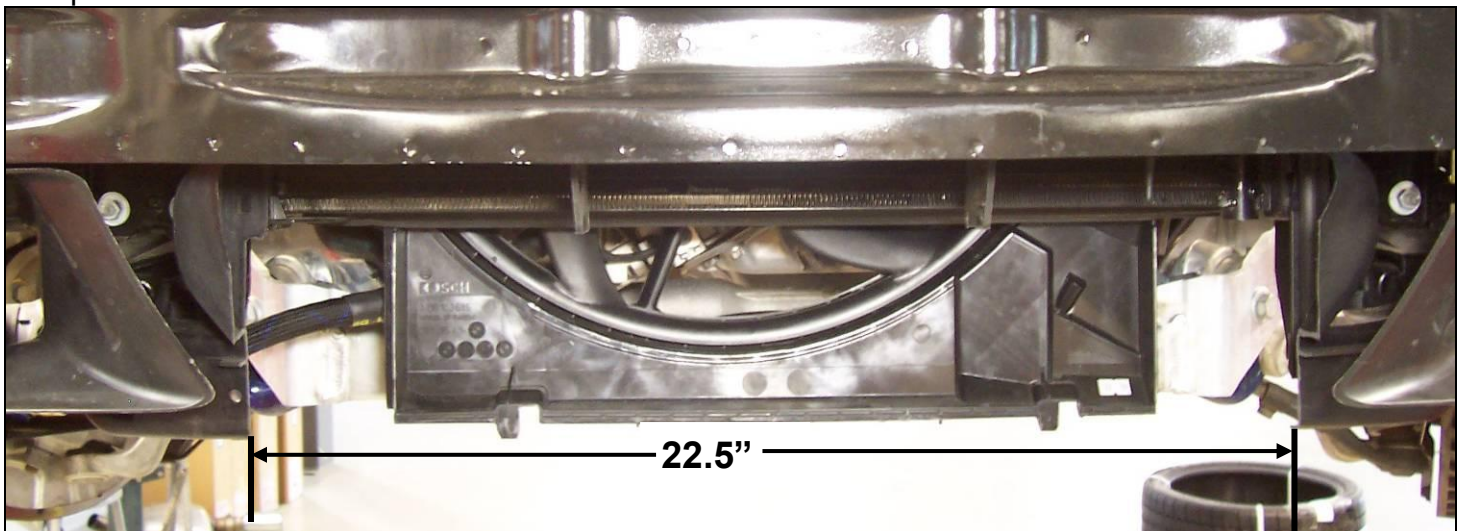
1. Remove the stock intercooler from the car using the BMW TIS procedure # 17 51 000. You can use a bent tipped scribe or similar tool to pull out the hose coupler latches. See also BMW TIS procedure # 11 61 365
2. Remove the hose coupler latches from the stock intercooler and save for installation on the Dinan intercooler.
3. The new intercooler will connect to the stock hose's the same way as the stock intercooler.

MAKE SPACE FOR THE DINAN INTERCOOLER

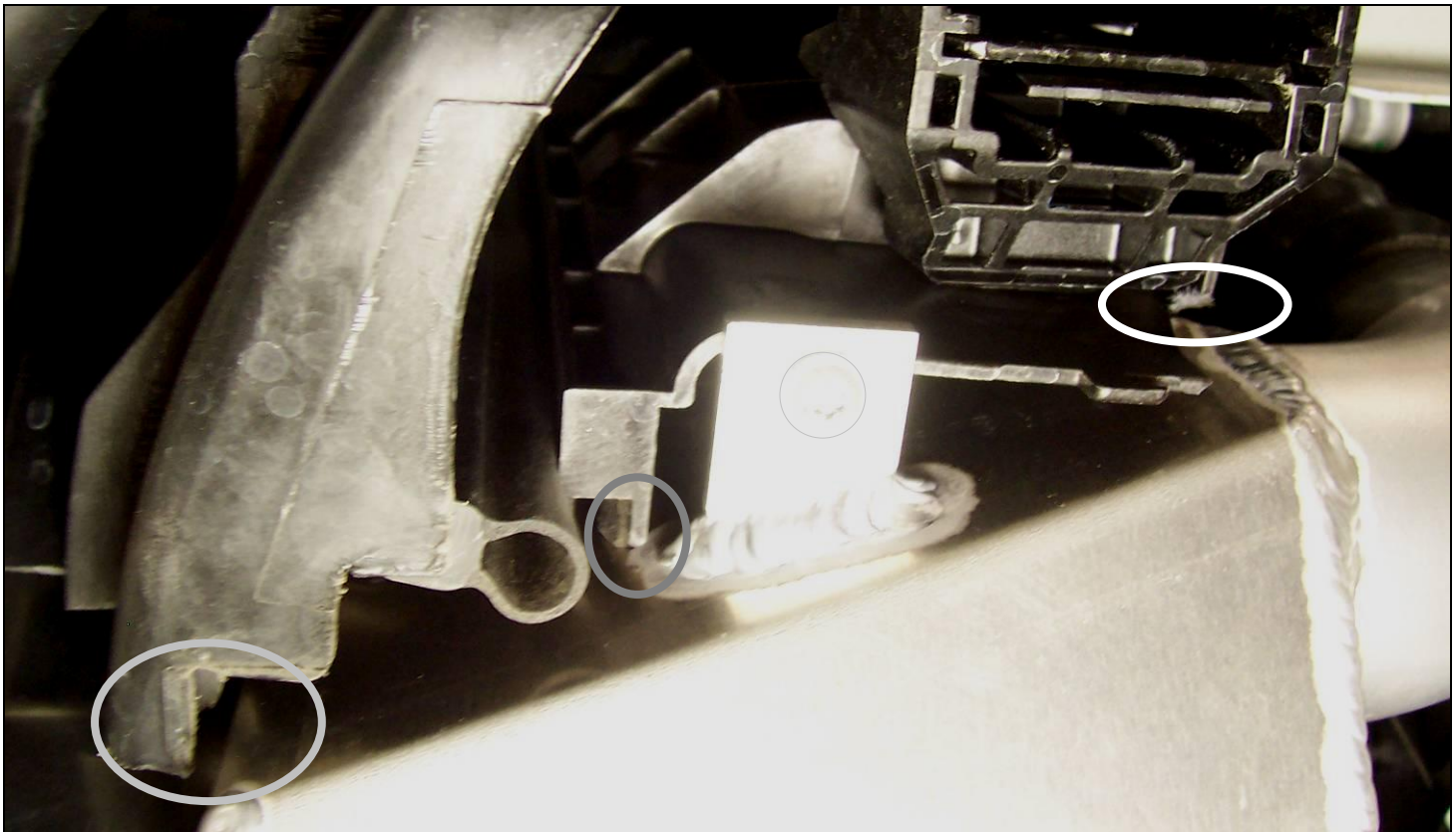
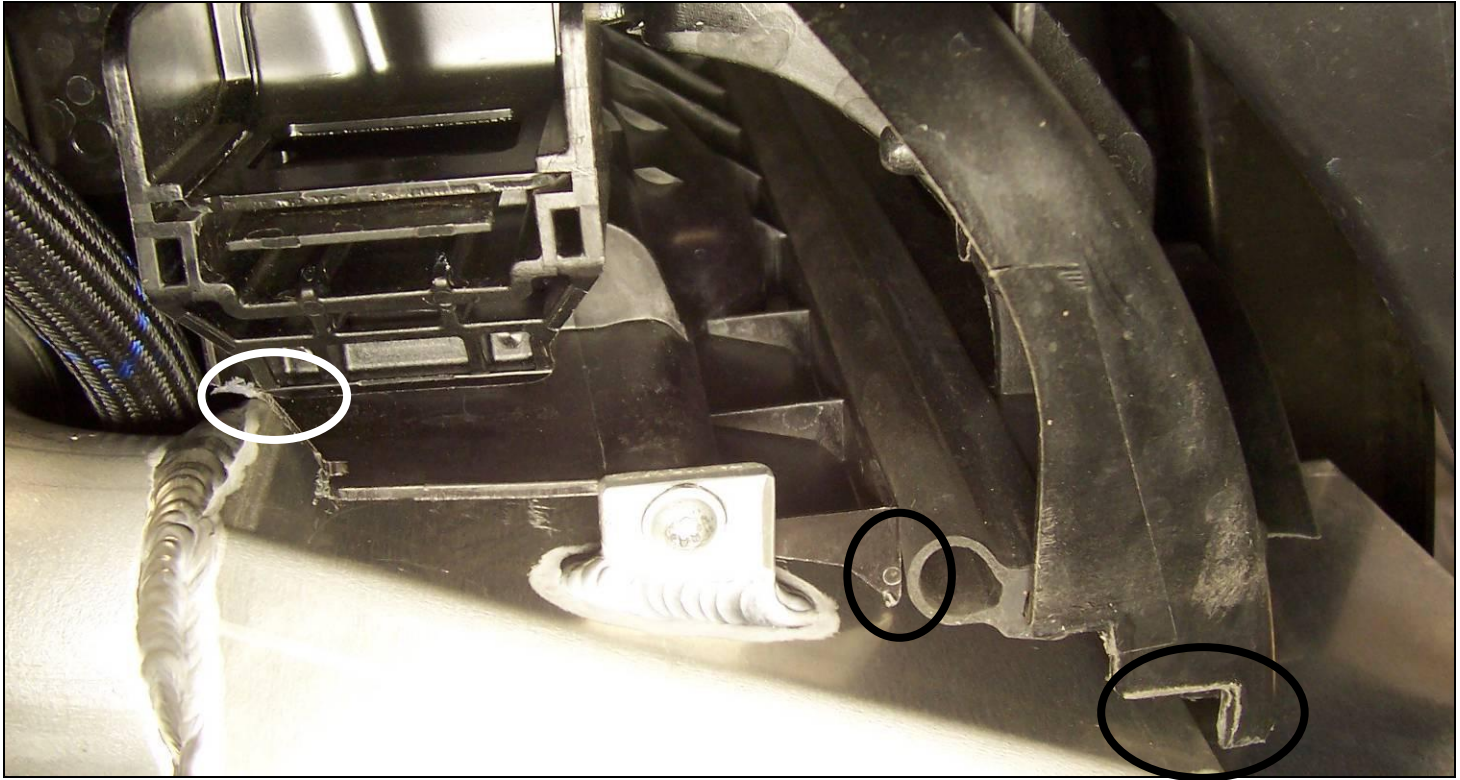
4. You will need to trim out a rectangular area of the radiator shroud as shown below. You will need to use a cutting tool or tools such as aviation snips, a hack saw, a fiberglass cutting disc held in a die grinder. A file can be used to deburr the cut areas. It is hard to get a good photo of the area to be cut out with clear cutting dimensions so I will try by first showing the area where the stock intercooler was removed from and next I will show the finished cutout. With everything being so dark in this area it will be a little tough to make out the exact places to cut. Study the following photos before doing any cutting. **Look closely at the two circled mounting holes for the stock intercooler. Do not cut these areas, as you will use these holes to mount the Dinan Intercooler.**



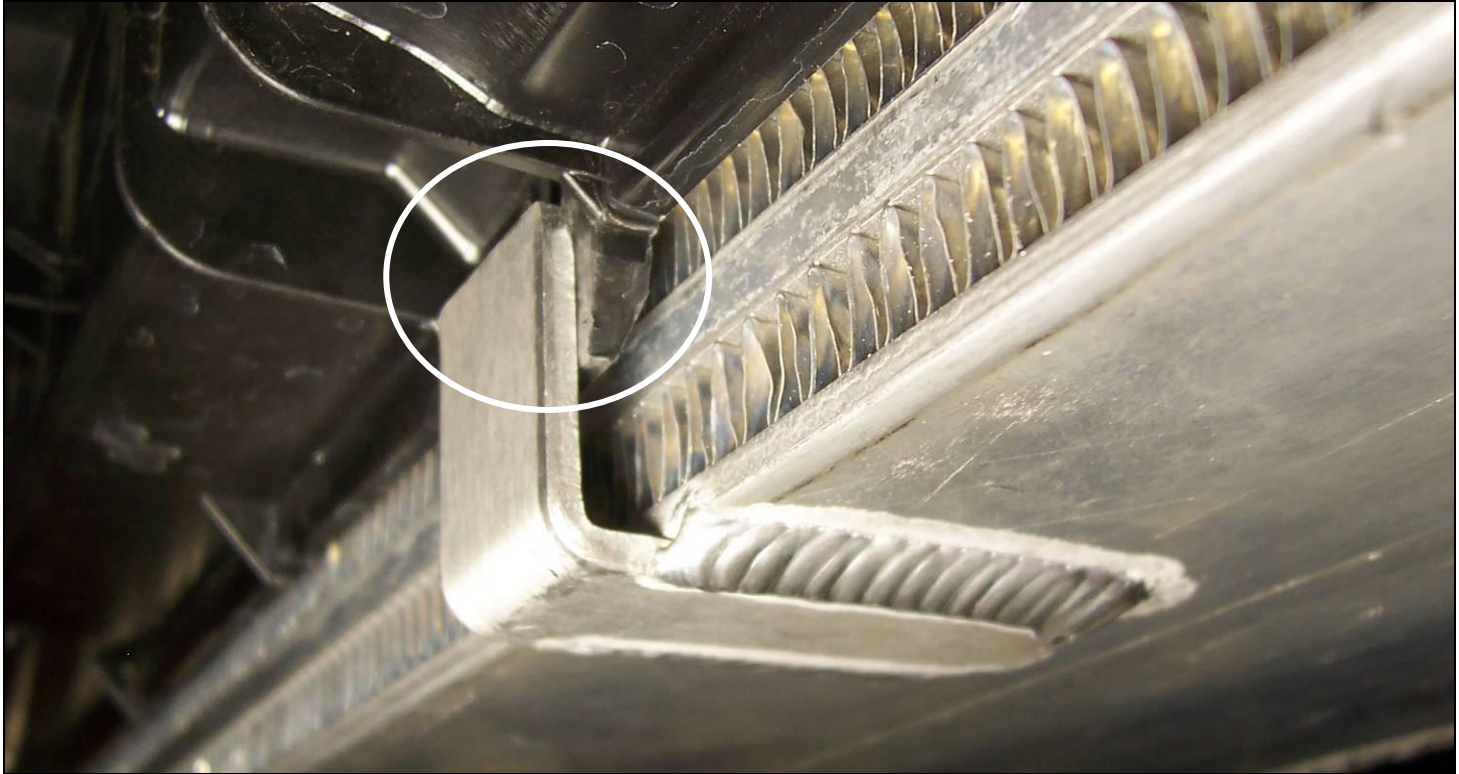
5. The photo below shows the basic cutout from the front view.



6. The two photos below show where the Intercooler ends meet the mounting screw areas. You may be able to trim less than the photo shows, as this was the prototype car install. I purposely overexposed the photo so the "hard to see" black plastic is much more visible. I have circled the areas of contact that require trimming.



7. The cutting for most of the plastic can be done using a hacksaw and a jig saw. It is easy to cut so don't go overboard as you can always take a little more off later. Minor trimming can be done with a sanding disc or large diameter die grinder bit.
8. Use the Dinan Intercooler to check fit your trimming efforts. It is important to latch the bent tangs on the lower back edge of the Intercooler onto the two tabs of the radiator shroud. See below.



9. When you have the Intercooler opening sufficiently clearanced you will need to install the hose coupler latches from the stock intercooler onto the Dinan intercooler. Check the condition of the O-Rings on the stock hose's and replace if needed.

INSTALL THE DINAN INTERCOOLER

10. Now you should be ready to install the Intercooler. Lift the Intercooler into place while guiding the hoses into the Intercooler tubes. This may be easier for two people to do the first time. **Be sure to get the radiator shroud tabs into the bent tangs on the lower back edge of the Intercooler. Double check that the hoses are fully in the Intercooler tubes and audibly snap into place!**
11. Try to start the two mounting screws onto the same threads that the screws originally cut to avoid weakening the threads. Do not over tighten the two mounting screws!
12. Reassemble the car in reverse of disassembly. See notes regarding underbody panel below.

INSTALL DINAN PANEL SPACER

13. The M-Technic front bumper has a plastic panel Adapter Strip that screws between the underbody panel and the bumper. This part limits how far down the “bumper skin” gets positioned. You may need to replace it with the supplied Dinan Panel Spacer. Refer to the notes for your specific car below.

- **For 335i:** The Dinan Panel Spacer is used on this vehicle. Transfer a sheet metal nut from the stock panel adapter to the middle tab on the Dinan Panel Spacer and screw to underbody panel. The two outer tabs are not used on this vehicle. Install underbody panel.
- **For 335xi:** The Dinan Panel Spacer may not be needed for this vehicle. Try using the stock adaptor first. If the bumper skin is forced down lower than normal, and is tilted downwards at an angle that doesn't fit properly with the stock adaptor, then you should use the Dinan Panel Spacer instead. Transfer a sheet metal nut from the stock panel adapter to the middle tab on the Dinan Panel Spacer and screw to underbody panel. The two outer tabs are not used on this vehicle. Install underbody panel.

