



CAMBER/CASTER PLATE KIT INSTALLATION INSTRUCTIONS

PART NUMBER D160-0600

APPLICATION: 2006-08 M5 (E60)
2006-08 M6 (E63, E64)

PARTS LIST

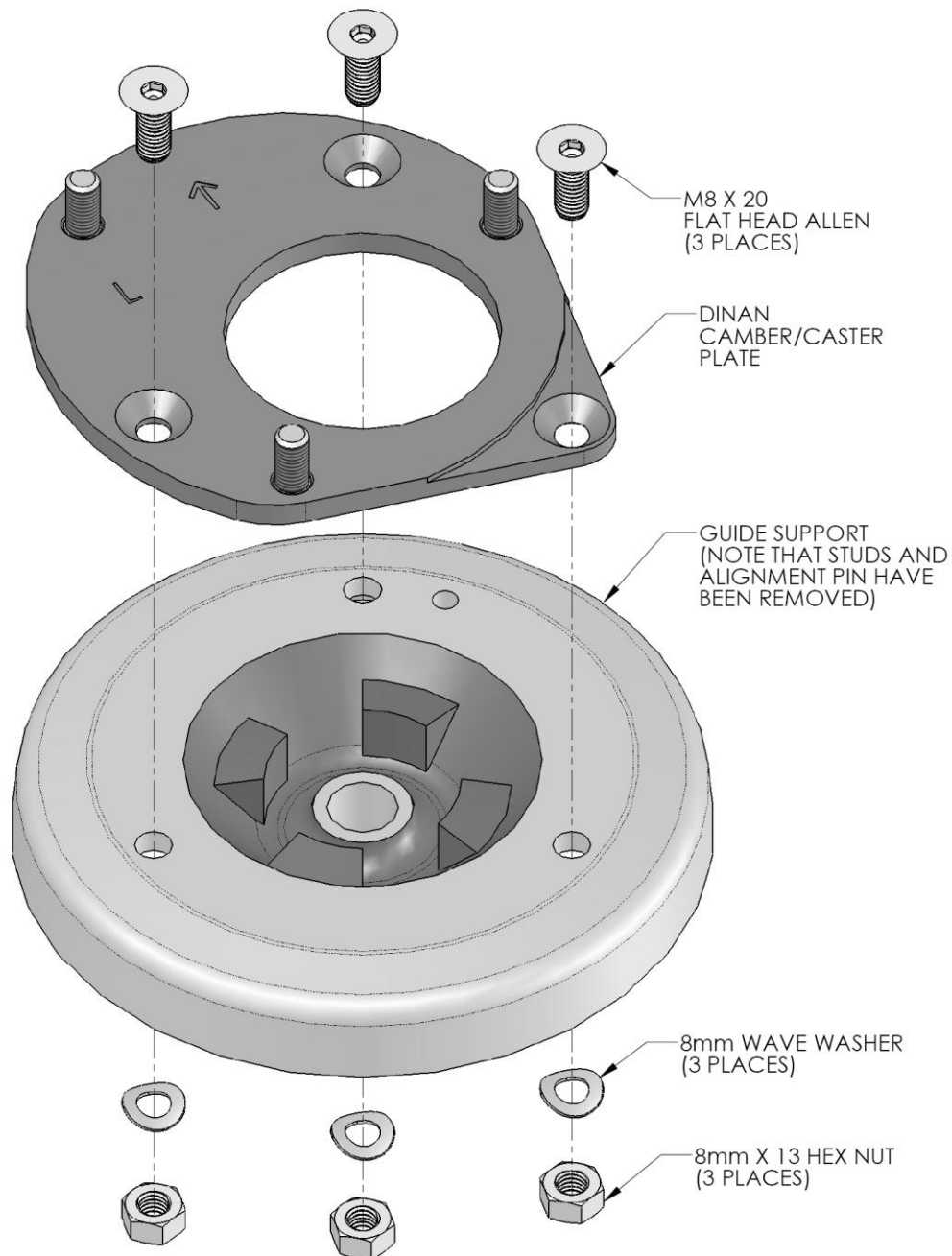
<u>Qty</u>	<u>Part Number</u>	<u>Description</u>
1	D163-0601	Left Camber/Caster Plate w/ studs
1	D163-0602	Right Camber/Caster Plate w/ studs
6	D211-0102	8mm x 20mm flat head Allen
6	M8X13 HEX	8 x 13mm nut
6	M8 WAVE	8mm wave washer

Congratulations for being selective enough to use Dinan Engineering Camber/Caster Plates. We have spent many hours developing these plates to assure that you will receive maximum performance and durability with minimum difficulty in installation. Please take the time to read these instructions and call us if you have any difficulties during the installation.

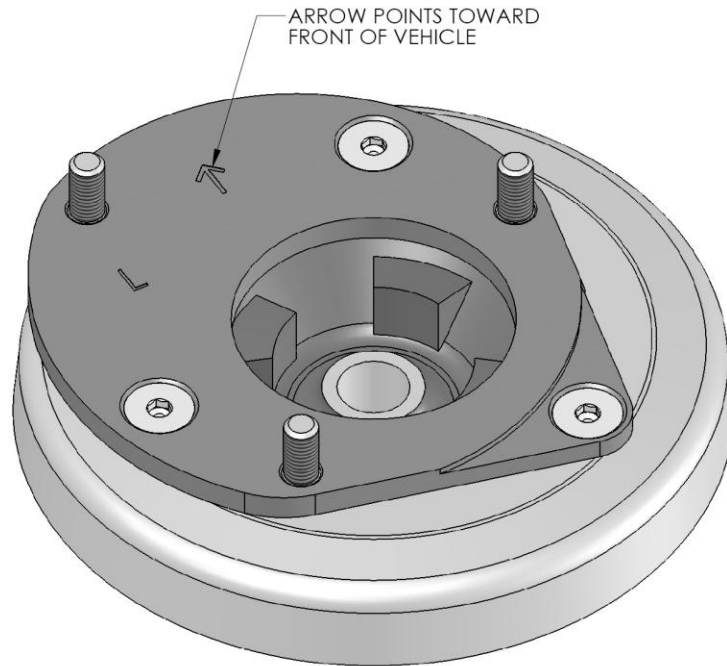
DO NOT WORK ON VEHICLES SUPPORTED BY A JACK ONLY. USE SECURE JACK STANDS!

1. The Dinan plates are installed on top of the stock strut bearing plates. If these plates are being installed along with a suspension system, you will perform these steps prior to reassembling the struts.
2. Remove the stock strut assemblies from the vehicle. Remove bearing hat from strut assembly.
3. Carefully pound out the studs from the bearing hats with a hammer and punch; remove and discard. If the bearing hat also has a protruding alignment pin on the top surface, remove it as well.

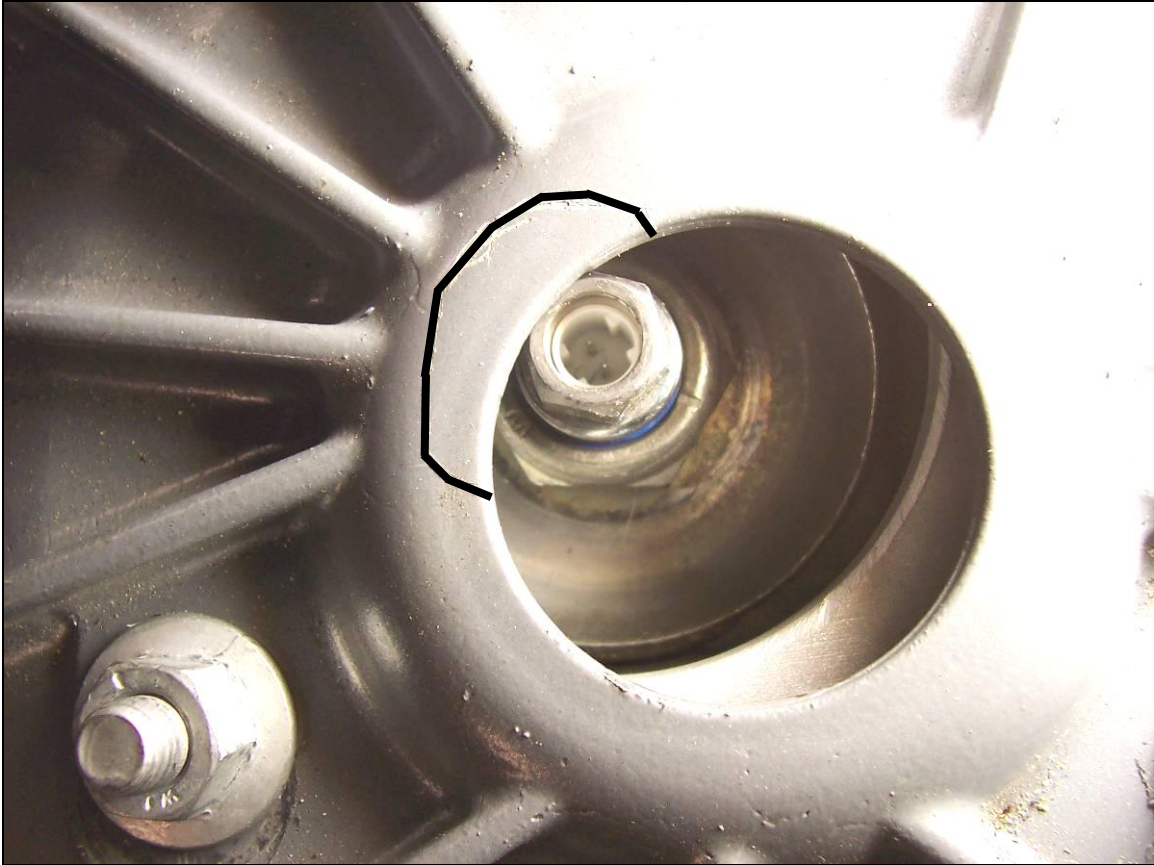
4. Note that the Dinan plates have been engraved with an "L" or "R", and arrows, to denote their application. When properly installed:
 - The engraved arrows point towards the front of the vehicle.
 - The "L" plate goes on the driver-side strut.
 - The "R" plate goes on the passenger-side strut.
5. **See Figure.** Place the Dinan plates on top of the stock bearing plates, line up the holes, and install the 8mm flat head Allen bolts, wave washers and nuts as shown. Use locktite on the threads and tighten securely.



6. Install the assembled bearing plates onto the struts using the original hardware. Take care to install the Left plate onto the driver-side strut, and the Right plate onto the passenger-side strut.
7. When properly installed, the top of the struts will be more inboard & rearward than stock. The arrows will also be pointing to the front. Rotate bearing plates until this is achieved, push struts inward for maximum negative camber, and lightly bolt strut assemblies to vehicle. Do not fully tighten the nuts at this time.



8. Clearance must be made in the strut tower for the electrical plug. Scribe a line that provides 1/16" to 1/8" of clearance around the plug (see figure below), when the strut is at the maximum negative camber position (see step 7).



9. Unbolt strut from vehicle and cover any components below the strut tower to protect from debris. Using a die grinder or other suitable tool, enlarge the opening up to your scribe line.
10. Reinstall strut assemblies into vehicle (remember to orient the camber plates per step 7 above). Verify clearance with the electrical plug and correct as necessary.

TAKE CARE TO PROPERLY ORIENT THE TWO PLATES OR UNDESIRE
ALIGNMENT CHANGES WILL OCCUR!

11. **Wheel alignment:** A full alignment will be required after Dinan Camber/Caster Plates are installed.