



## CAMBER PLATE KIT INSTALLATION INSTRUCTIONS

PART NUMBER D160-0003

APPLICATION: 2008 M3 (E90/E92)

---

### PARTS LIST

<u>Qty</u>	<u>Part Number</u>	<u>Description</u>
1	D162-0005	Camber Plate Left E90
1	D162-0006	Camber Plate Right E90
6	D671-0115	Jam Nut (M8x12)
6	D211-0103	8mm x 16mm Flat Head Allen

---

Thank you for purchasing camber plates from Dinan Engineering. Great care has been spent developing this product to assure that you will receive maximum performance and ease of installation. Please take time to read these instructions.



### Warnings and notes



- Never work on vehicles supported by a jack only. Use secure jack stands!
- Be sure that the camber plates are installed in the correct orientation. Incorrect installation has a severe negative impact on wheel alignment and vehicle handling.
- L and R refer to left and right side of the vehicle respectively when seated in the driver's seat and facing the front of the vehicle.

### Installation Instructions

1. The camber plates are installed between the body and the guide support (bearing hat). If the Camber Plates are being installed with a suspension system, you will perform these steps prior to reassembling the struts.
2. Follow BMW's recommended procedure for removing the strut assemblies from the vehicle.

3. Carefully pry the bearing assembly from the guide supports. See figure 1.

(Note: If you are installing a Dinan suspension kit at the same time as these camber plates, be sure to use the Dinan Low Profile Bearing hats supplied with the suspension kit instead of the original ones).



4. Carefully remove the studs from the guide supports. You will reuse these studs so protect the threads on the studs. Thread the nuts back onto the studs up to the lock portion and use a brass hammer to tap out the studs.
5. There is an alignment pin in the guide support that must be removed. An Allen wrench can be used to unscrew it. Often the Allen will strip, and the alignment pins will have to be drilled out.

6. Unscrew the nuts from the studs and remove the studs from the guide supports. Carefully tap the studs into each camber plate as shown in figure 2.



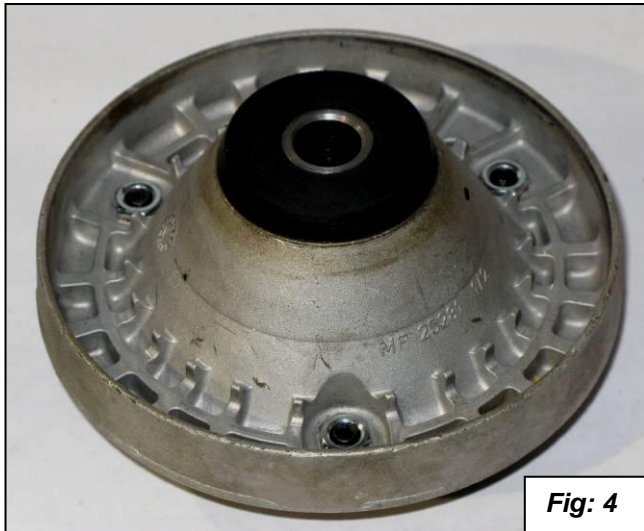
Fig: 2

7. Make sure you tap the studs all the way into the camber plates. They should be slightly beyond flush from the surface of the camber plate. See figure 3.



Fig: 3

8. The Dinan camber plates have been engraved with "L" or "R", to denote left and right side respectively when seated in the driver's seat and facing the front of the vehicle. On a left-hand drive car (i.e., USA), L is drivers side and R is passenger side. When properly installed, the engraved letters will be inwards, towards the engine with the arrow pointing forward.
9. Place the left-side (i.e., driver's side) camber plate on the left strut. Clean all the supplied 8mm flat head Allen bolts and nuts with Loctite primer just before use. The nuts **MUST** be assembled with Red Loctite 271 following the manufacturer's directions. Line up the holes, and use the supplied 8mm flat head Allen bolts and jam nuts to attach Dinan camber plate to stock bearing plate. Torque nuts to 18 ft-lbs. See figures 4 and 5.



10. Carefully install the bearing assembly back onto the guide support and reassemble the strut assembly.
11. Repeat previous steps with the assembled right-side bearing plate and right strut.
12. When properly installed, the top of the struts offset toward the center line of the vehicle. The engraved letters will also be inwards and towards the engine. Confirm that you have the proper plates on the proper side of the vehicle, and securely bolt strut assemblies to vehicle (see note below).

**Note:**

- Torque nuts to 18 ft-lbs.

13. **Wheel alignment:** An adjustment will be required after Dinan Camber Plates are installed.