



HIGH FLOW MIDPIPE INSTALLATION INSTRUCTIONS

PART NUMBER D660-0057

APPLICATION: 2016-17 F30 340i & xDrive
2017 F32 440i & xDrive Coupe
2017 F33 440i & xDrive Convertible
2017 F36 440i & xDrive Gran Coupe

Congratulations for being selective enough to use a Dinan High Flow Midpipe Kit. We have spent many hours developing this kit to assure that you will receive maximum performance and durability with minimum difficulty in installation. Please take the time to read these instructions and call us if you have any difficulties during the installation.

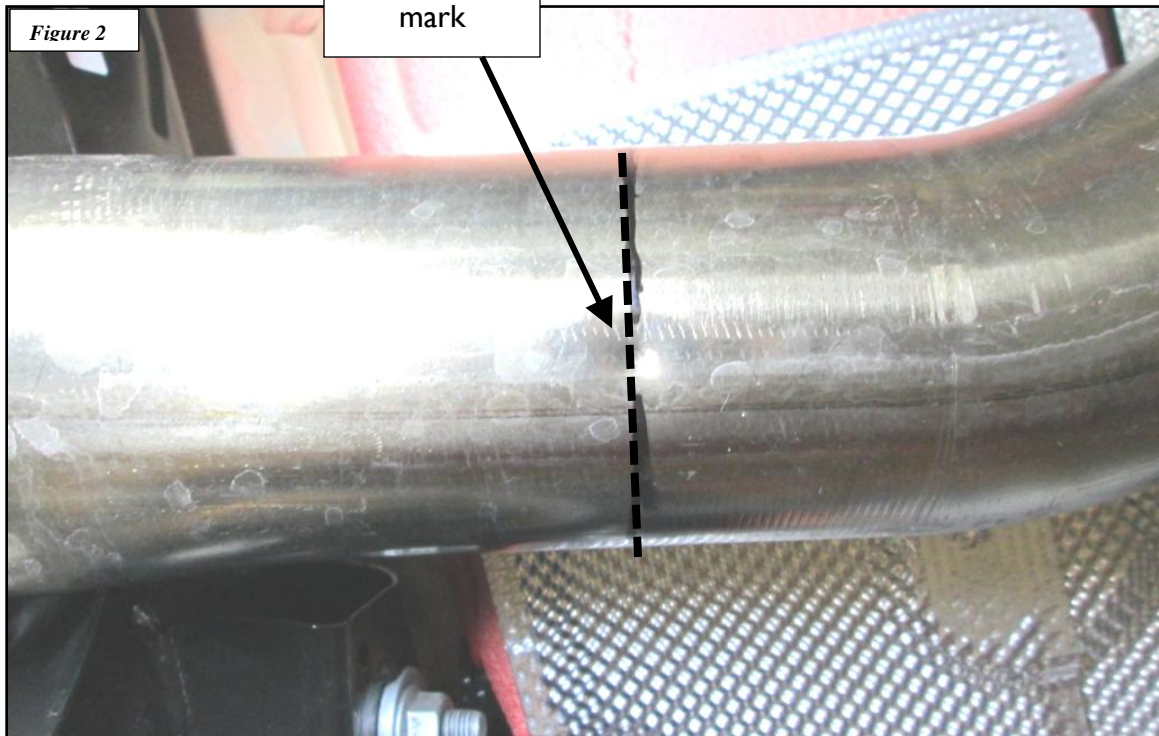
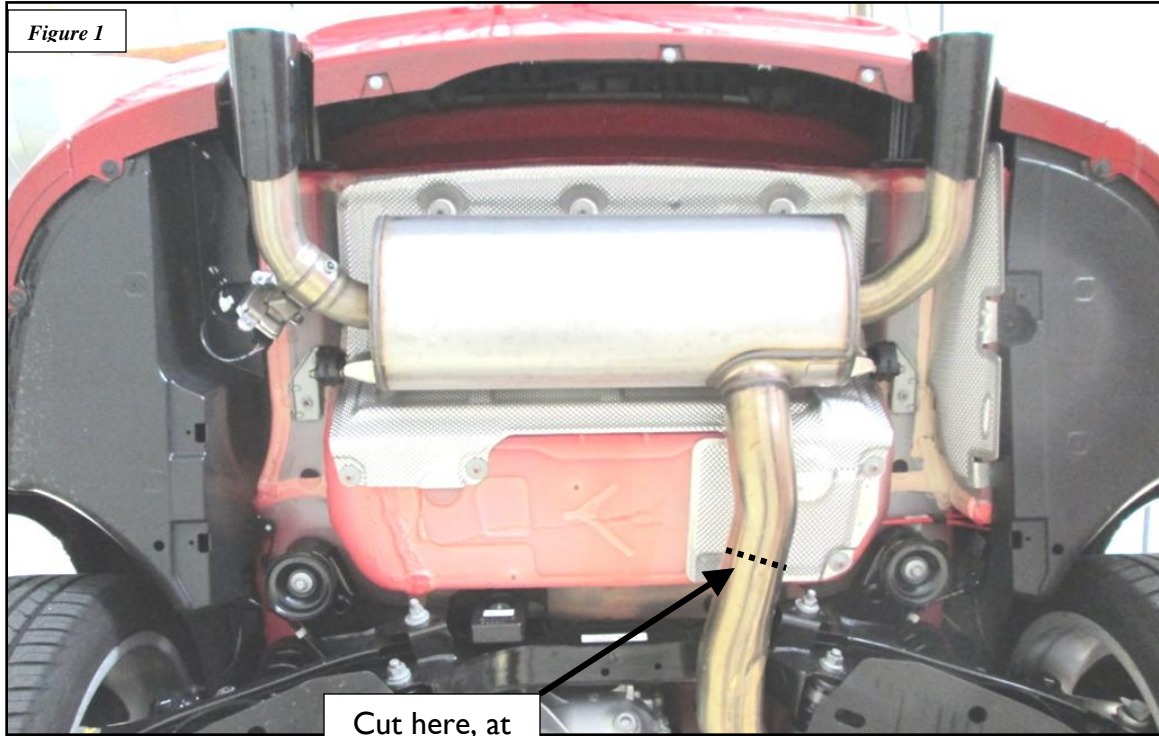
PARTS LIST

Qty	Part #	Description
1	D662-0423	Midpipe; Front
1	D662-0424	Midpipe; Rear
3	D662-9247	80mm Clamp



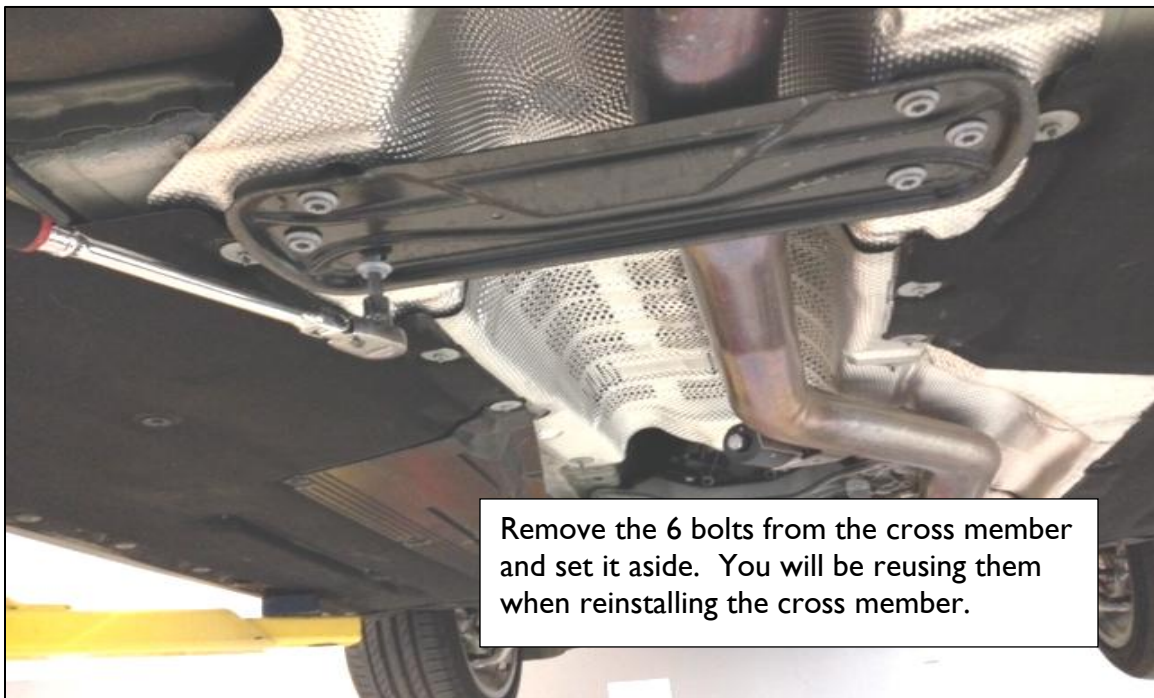
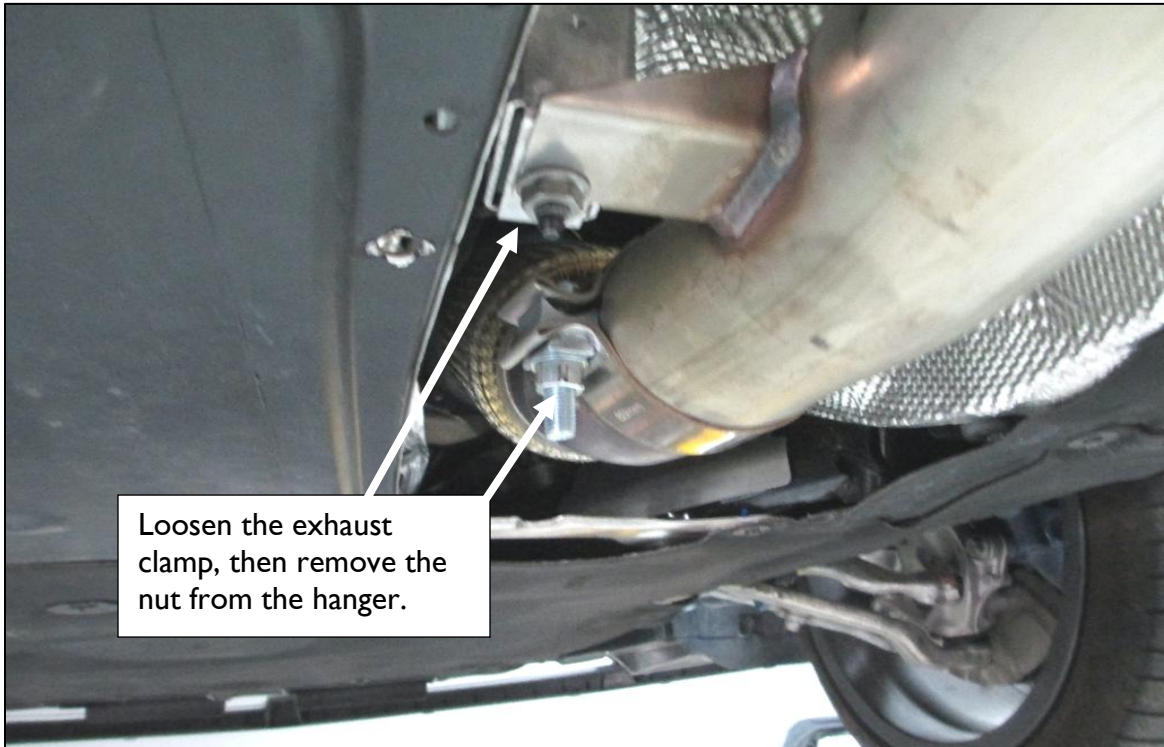
INSTALLATION:

1. Support the exhaust securely with a jack or a stand, then make the first cut on the stock mid-pipe at the BMW punch mark as shown in Figures 1 & 2. Before cutting the stock midpipe, hold the DINAN mid-pipe underneath stock midpipe to verify the length so the stock pipe will not be cut too short!

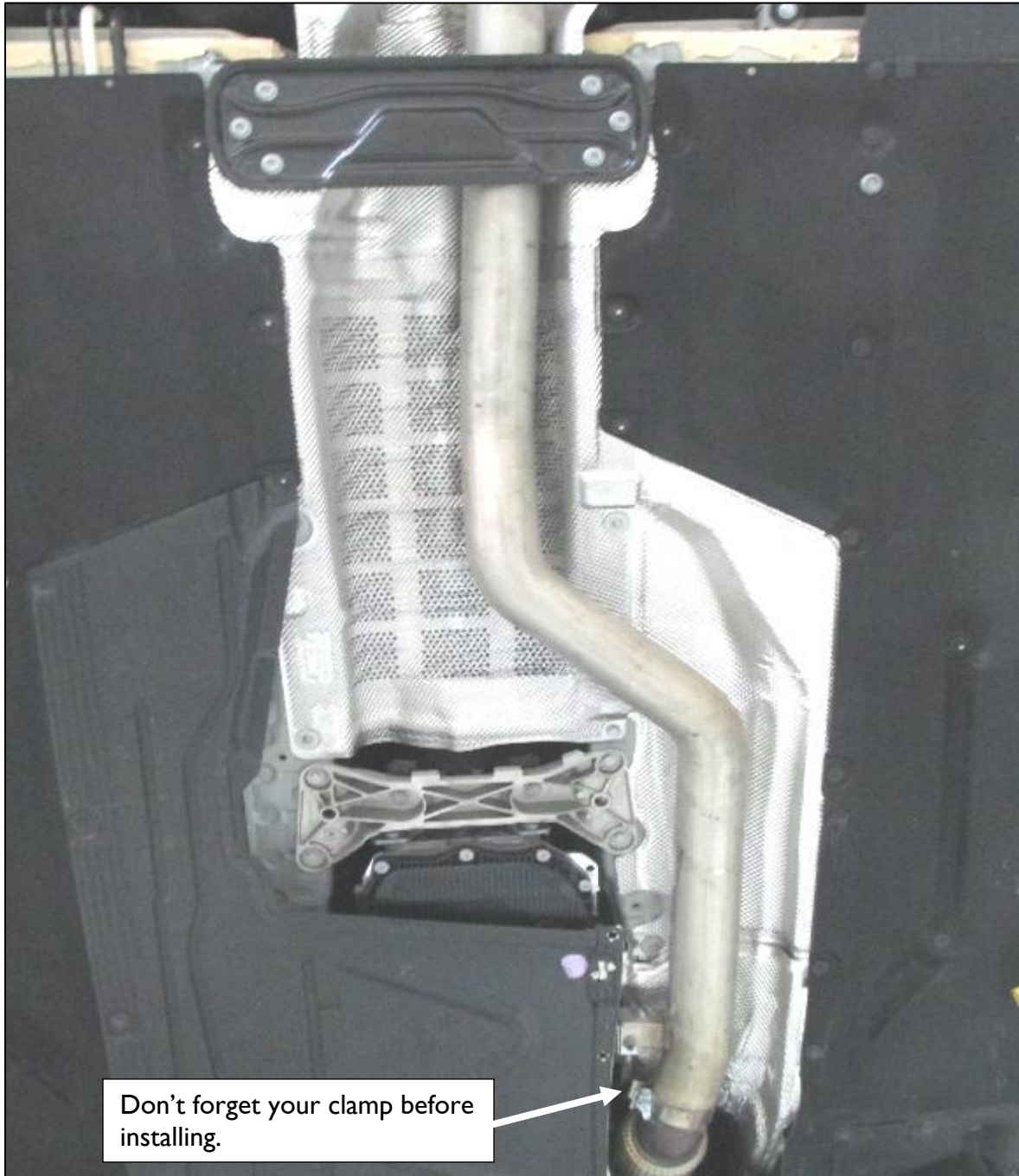


2. Remove stock midpipe from vehicle:

- Loosen the clamp at the outlet of the catalytic converter.
- Remove the nut from the hanger as shown in the photo.
- Remove the stock midpipe from vehicle.

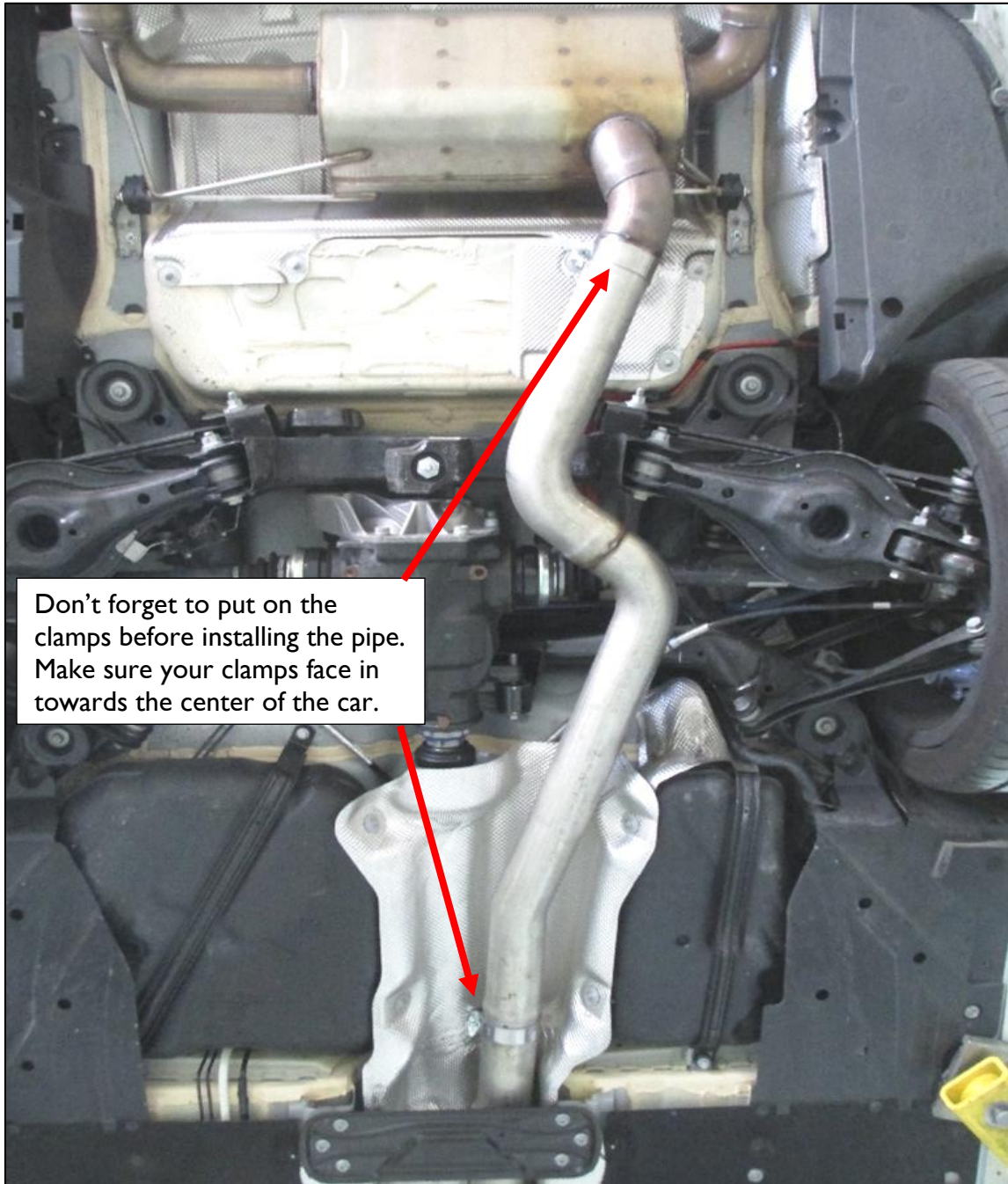


3. Install the Dinan front midpipe section (this pipe has a welded bracket for the hanger at the front):
 - Slip a 80mm clamp onto the front of the pipe.
 - Slip the end with the bracket onto the catalytic converter.
 - Reinstall the nut onto the bracket.
 - Reinstall the cross member.



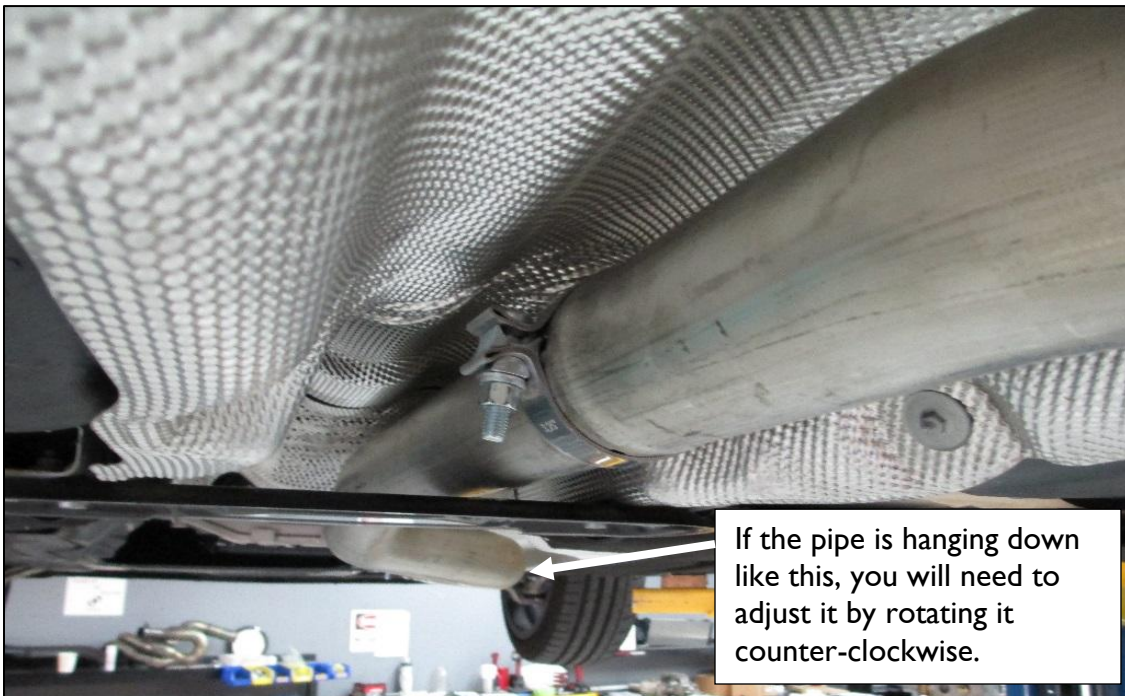
4. Install the Dinan rear midpipe:

- Slip a 80mm clamp onto the front of the pipe.
- Slip a 80mm clamp onto the rear of the pipe.
- Make sure the clamp bodies face inward towards the center of the car, with the nut facing downwards towards the ground.
- Slip the pipe onto the front midpipe.
- Slip the muffler inlet into the rear of the Dinan midpipe.



5. Adjust the Dinan front midpipe section:

- Starting at the front, rotate the front midpipe to make the hanger sit straight up and down.
- The pipe should be level with the floor. Adjust as needed.
- Lightly tighten the front clamp.



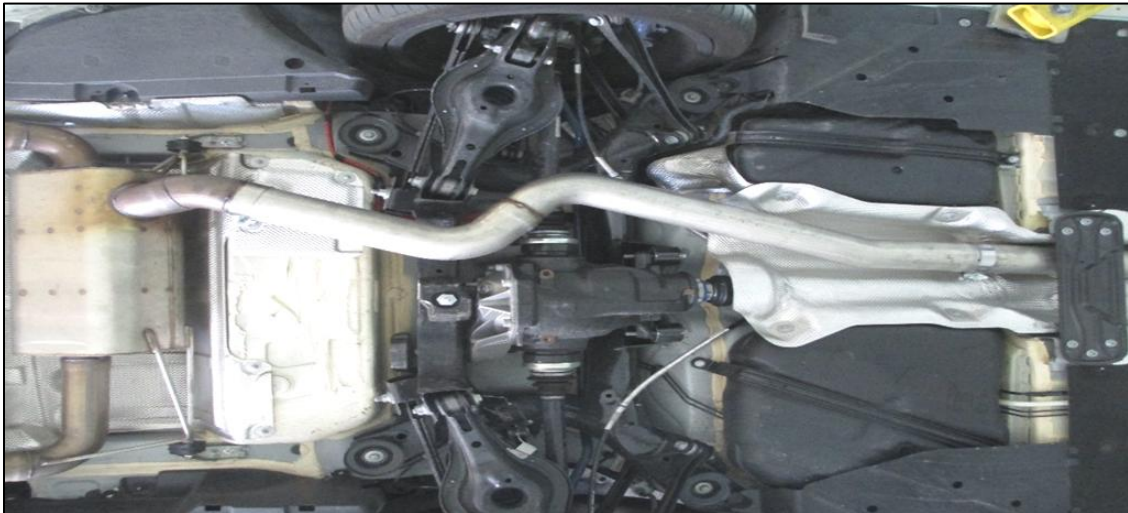
6. Adjust the Dinan rear midpipe section:

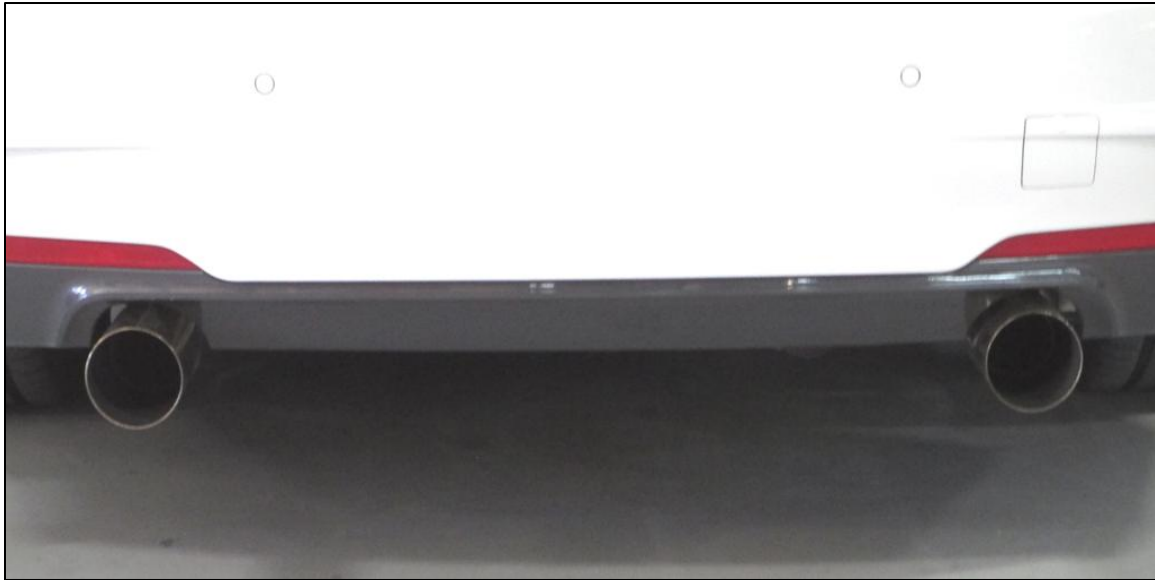
- Rotate the pipe until everything fits properly.
- Start by slightly tightening both clamps so you can still move and rotate the pipe.
- Rotating the pipe will change the gap where the pipe passes over the cross member (as in the photo).
- Adjust pipe to obtain 5/16" to 3/8" clearance with cross member.



7. Adjust exhaust tip location:

- Have another person hold the muffler in place.
- Rotate the pipes to adjust the tip location.
- When you are satisfied with the tip location, tighten all clamps.
- Double-check for adequate clearance with the cross member.
- Check for adequate clearance around all sides of the midpipe.





8. Drive car and get the exhaust hot. Recheck for adequate clearance in all areas. If necessary, let pipes cool before performing further adjustment
9. Happy Motoring!

Shop for other performance exhaust systems on our website.