



**Detroit Speed, Inc.
 Selecta-Speed Wiper Kit
 1963-64 B-Body
 P/N: 121662**

A downpour of rain will no longer hinder your ability to clearly see the road. The Detroit Speed Selecta-Speed Wiper Kit provides you with the performance and convenience of a late model wiper system in a package that easily and cleanly mounts in your 1963-64 B-Body.



Item #	Description	Quantity
1	Wiper Motor Assembly	1
2	Wiper Control Module w/ Mounting Plate	1
3	Wiper Harness	1
4	Wiper Switch Assembly	1
5	Wiper Switch Retaining Bezel	1
6	Wiper Switch Knob Closeout Pin	1
7	Wiper Switch Closeout Pin O-Ring	1
8	Wiper Switch Clocking Spacer	1
9	Wiper Pitman Arm E-Clip	1
11	10-24 x 3/4"L SS Flat Head Screws	3
12	Instructions	1

This kit features a seven-speed wiper system with five delays, low speed, and high speed. The new pitman arm, included in the kit, connects directly to your existing wiper linkage. A rotary switch is also included, along with a complete wiring harness.

This kit does feature a washer pump option as the wiper switch does have a push button function. The wiring harness/control module is equipped with a power and ground wire to install an inline electric washer pump. Detroit Speed does offer a washer pump kit available as part number 121102.

Installation Instructions:

1. Before beginning, please ensure that the parts included with your kit match the parts list above. Ensure that the factory wiper system is in its "Parked" position. Disconnect the battery power by removing the negative battery lead from the battery.
2. Mark the position of the wiper arms by placing masking tape on the windshield where the wiper blades contact the windshield. This will assure the arms are accurately replaced. Remove the wiper arms, windshield washer hoses and the cowl panel from the vehicle.
3. Disconnect the original wiper motor wiring from the wiper motor. The original wiring will not be used with the new Selecta-Speed Wiper Kit. A custom harness is provided to replace the original. **NOTE: If you decide to cut the old wires please pay special attention to properly terminate the wire ends to avoid possible shorting.**
4. Disconnect the wiper linkage from the wiper motor pitman arm by removing the clip. This clip can be re-used later on. Remove the stock wiper motor from the firewall by removing the 3 fasteners (Figure 1).



Figure 1 - Remove Stock Wiper Motor

5. Mount the new wiper motor assembly to the firewall. Use the three supplied 10-24 x 3/4"L stainless steel flat head Allen screws to mount the wiper motor assembly to the firewall. The adapter plate will mount to the firewall using the original wiper motor weld nuts (Figure 2 on the next page).



Figure 2 - Mount Wiper Motor

6. The Selecta-Speed switch will replace the stock wiper switch. Loosen the set screw on the wiper knob with a flat blade screwdriver and remove it from the wiper switch.
7. Remove the bezel from the stock wiper switch and unplug the connector from the back of the switch. Remove the stock wiper switch from the dash (Figure 3). Tie up or remove the original wiring from under the dash.



Figure 3 - Remove Stock Wiper Switch

8. Place the provided wiper switch clocking spacer on the new wiper switch by lining up the anti-rotation tab on the switch with the lower slot on the clocking spacer (Figure 4).



Figure 4 - Wiper Switch Clocking Spacer

9. Install the new wiper switch into the dash by lining up the flat on the locking spacer with the flat in the switch mounting hole in the dash (Figure 5).



Figure 5 - Install Detroit Speed Switch

10. Place the provided wiper switch retaining bezel over the wiper switch. Tighten the retaining bezel by hand (Figure 6).



Figure 6 - Install Retaining Bezel

11. Install the original wiper knob onto the new switch shaft. Align the set screw with the flat on the switch shaft and tighten. **NOTE:** Make sure the set screw locks onto the flat on the switch shaft.
12. Install the provided o-ring from the hardware kit onto the groove of the wiper switch knob closeout. Insert the wiper switch knob closeout into the hole where the original washer button was located (Figure 7).



Figure 7 - Wiper Switch Knob Closeout

13. Next, using a Uni-bit, drill out the existing 1" hole from the original wiper motor wiring harness in the firewall to 1-1/4" to allow the wiper motor connector to pass through the firewall. Place the provided wiring harness underneath the dash. Route the wiper motor connector side of the wiring harness (Figure 8a) through the firewall (Figure 8b).



Figure 8a – Wiper Motor Connector

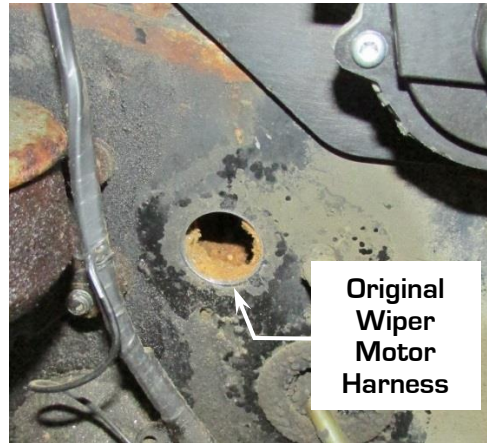


Figure 8b – Wiper Motor Harness

14. A rubber grommet is already installed on the wire loom for the wiper motor wires. Once there is enough of the loom through the firewall to connect the wiper motor, move the grommet on the loom and install it into the firewall to seal the engine compartment from the inside of the vehicle (Figure 9).



Figure 9 – Install Wiper Motor Harness

15. The Detroit Speed Selecta-Speed harness does include a weather pack connector to install an optional electric inline washer pump into your vehicle (Figure 10). Detroit Speed does offer a washer pump kit you can purchase separately as part number 121102.



Figure 10 – Washer Pump Connection

16. If you have purchased the Detroit Speed washer pump kit, use the instructions from that kit to complete the washer pump kit installation. If you do not want to use the washer pump feature, you can tie wrap this connector/loom up under the dash.
17. Next, you will need to install the wiper control module under the dash. It can be mounted anywhere you prefer however there is a recommended location using the steering column clamp at the firewall (Figure 11). **NOTE:** Angle the bracket away from the steering column so it doesn't interfere with the brake pedal.



Figure 11 - Install Control Module

18. With the wiper control module in place, plug in the wiper switch and wiring harness connectors into the control module (Figure 12).

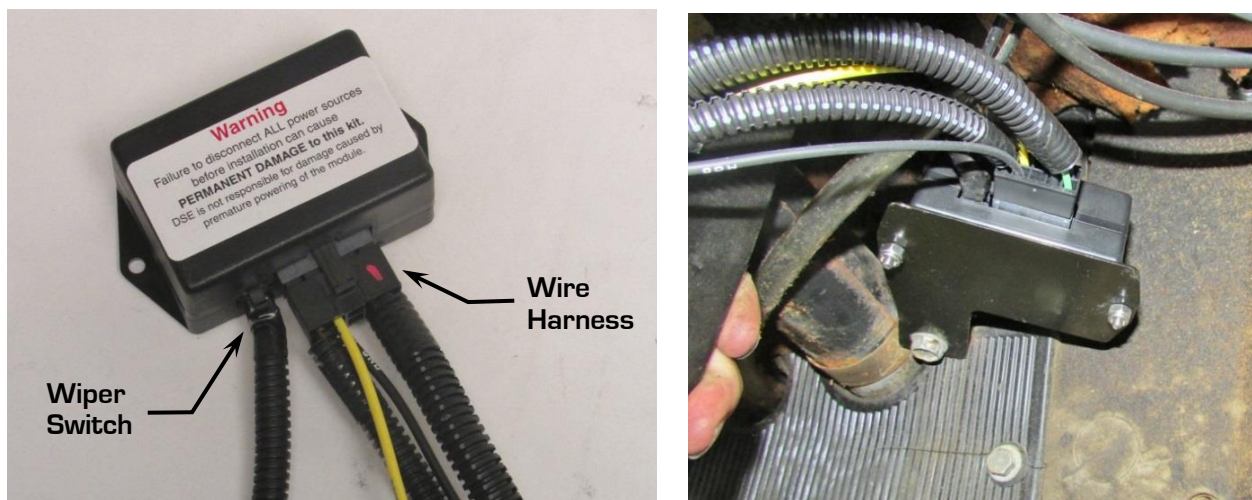


Figure 12 - Connect Wiper Switch & Harness to Module

19. Connect the yellow wire under the dash to a 12V ignition or accessory switched source (Figure 13). [Circuit is active when the key is in the run position]. This lead is supplied with an inline 30 amp ATO fuse.



Figure 15 - Install Wiper Linkage to Pitman Arm

22. Install the original wiper linkage clip to hold the wiper linkage in place to the pitman arm (Figure 16a) or you can use the provided E-clip (Figure 16b).



Figure 16a - Install Pitman Arm Clip



Figure 16b - E-Clip

23. Upon a successful test, the wiper conversion is now complete. Secure the new wiring harness under the dash and in the engine compartment. Re-install the cowl panel and wiper arms along with any other component that had been removed.

NOTE: In some cases high energy ignition systems have caused interference with the correct operation of the Selecta-Speed Wiper Kit due to spark plug wires routed closely to the wiper motor. If this occurs, re-routing your spark plug wires may be necessary.