



**Detroit Speed, Inc.
 Selecta-Speed Wiper Kit
 1965-66 B-Body
 P/N: 121661**

A downpour of rain will no longer hinder your ability to clearly see the road. The Detroit Speed Selecta-Speed Wiper Kit provides you with the performance and convenience of a late model wiper system in a package that easily and cleanly mounts in your 1965-66 B-Body.



Item #	Description	Quantity
1	Wiper Motor Assembly	1
2	Wiper Control Module w/ Mounting Plate	1
3	Wiper Harness	1
4	Wiper Switch Assembly	1
5	Wiper Switch Retaining Bezel	1
6	Wiper Switch Knob Closeout	1
7	Wiper Switch Closeout O-Ring	1
9	10-24 x 3/4"L SS Flat Head Screws	3
10	3/8"-16 x 7/8"L Hex Flange Bolt	1
11	3/8"-16 Flange Lock Nut	1
12	Instructions	1

This kit features a seven speed wiper system with five delays, low speed, and high speed. The new pitman arm, included in the kit, connects directly to your existing wiper linkage. A rotary switch is also included, along with a complete wiring harness.

This kit does feature a washer pump option as the wiper switch does have a push button function. The wiring harness/control module is equipped with a power and ground wire to install an inline electric washer pump. Detroit Speed does offer a washer pump kit available as part number 121102.

Installation Instructions:

1. Before beginning, please ensure that the parts included with your kit match the parts list above. Ensure that the factory wiper system is in its "Parked" position. Disconnect the battery power by removing the negative battery lead from the battery.
2. Disconnect the wiper linkage from the wiper motor pitman arm and remove the stock wiper motor from the firewall (Figure 1).



Figure 1 – Stock Wiper Motor

3. The original wiring will not be used with the new Selecta-Speed Wiper Kit. A custom harness is provided to replace the original. **NOTE: If you decide to cut the old wires please pay special attention to properly terminate the wire ends to avoid possible shorting.**
4. Mount the new wiper motor assembly to the firewall. Use the three supplied 10-24 x 3/4"L stainless steel flat head Allen screws to mount the wiper motor assembly to the firewall. The adapter plate will mount to the firewall using the original wiper motor weld nuts (Figure 2 on the next page).



Figure 2 - Mount Wiper Motor

5. Attach the new pitman arm to the original wiper linkage (Figure 3). **NOTE: The Selecta-Speed wiper kit is shipped with the pitman arm in the "parked" position. Do not move the pitman arm by hand to attach the wiper linkage. If the pitman arm is moved from the original "parked" position from Detroit Speed, it may result in the wiper blades stopping in the wrong spot on the windshield.**

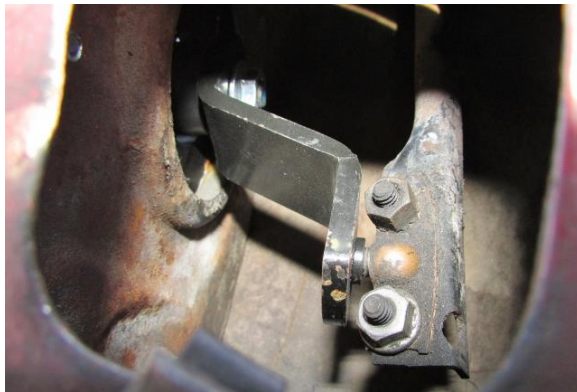


Figure 3 - Attach Wiper Linkage to Pitman Arm

6. The Selecta-Speed switch will replace the stock switch. Loosen the set screw on the wiper knob and remove it from the switch. Remove the bezel from the switch by using a flat blade screwdriver or appropriate tool. Remove the stock wiper switch from the dash and remove the connector. Tie up the original wiring under the dash, if desired.
7. Cut the template out (Figure 4) and place it over the existing wiper switch hole in the dash. Make sure the arrow is pointed up [12 o'clock position].

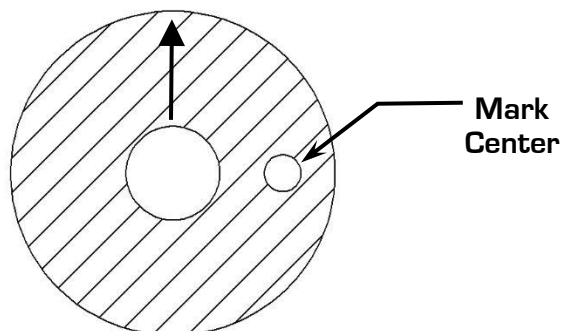


Figure 4 - Switch Mounting Template

8. Mark the center of the unshaded area of the template on the dash. Remove the template and drill a 5/32" hole in the dash to accommodate the anti-rotation tab of the switch (Figure 5). Install the new wiper switch into the dash (Figure 6).



Figure 5 - Drill Anti-Rotation Hole



Figure 6 - Install Wiper Switch

9. Use the provided wiper switch retaining bezel to mount the switch in the original dash location and tighten by hand to hold the switch in place. (Figure 7).



Figure 7 - Switch Retaining Bezel

10. Install the original wiper knob onto the new switch shaft. Align the set screw with the flat on the switch shaft and tighten. **NOTE:** Make sure the set screw locks onto the flat on the switch shaft.
11. Install the provided o-ring from the hardware kit onto the groove of the wiper switch knob closeout. Insert the wiper switch knob closeout into the hole where the original washer button was located (Figure 8).

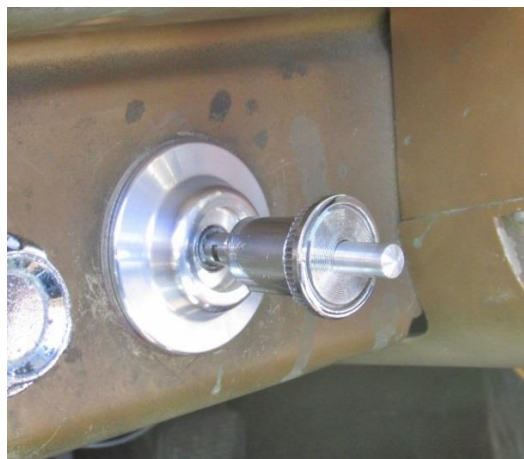


Figure 8 - Wiper Switch Knob Closeout

12. Next, drill out the existing hole from the original wiper motor wiring harness in the firewall to 1-1/4" to allow the wiper motor connector to pass through the firewall. Place the provided wiring harness underneath the dash. Route the wiper motor connector side of the wiring harness (Figure 9) through the firewall. (Figure 10).



Figure 9 - Wiper Motor Connector

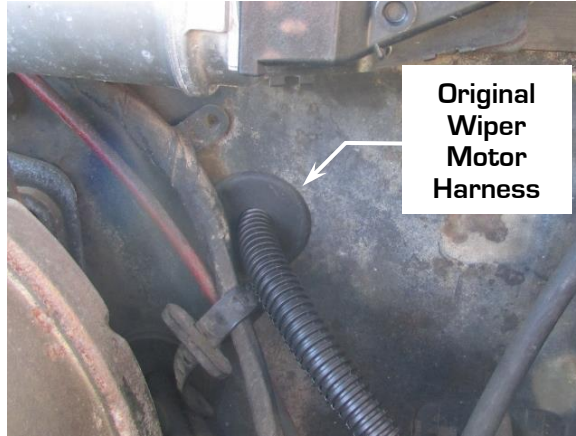


Figure 10 - Wiper Motor Harness

13. A rubber grommet is already installed on the wire loom from the wiper motor wires. Once there is enough of the loom through the firewall to connect the wiper motor, move the grommet on the loom and install it into the firewall to seal the engine compartment from the inside of the vehicle (Figure 11).



Figure 11 - Install Wiper Motor Harness

14. The Detroit Speed Selecta-Speed harness does include a weather pack connector to install an optional electric inline washer pump into your vehicle (Figure 12). Detroit Speed does offer a washer pump kit you can purchase separately as part number 121102.



Figure 12 - Washer Pump Connection

15. If you have purchased the Detroit Speed washer pump kit, use the instructions from that kit to complete the washer pump kit installation. If you do not want to use the washer pump feature, you can tie wrap this connector/loom up under the dash.
16. Next, you will need to install the wiper control module under the dash. It can be mounted anywhere you prefer however there is a recommended location next to the kick panel by the park brake (Figure 13).

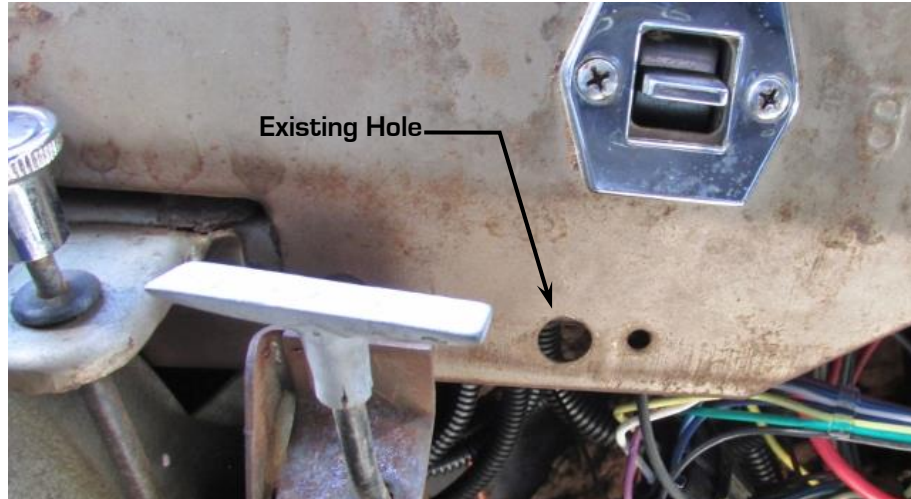


Figure 13 - Control Module Mounting Hole

17. Install the control module assembly to the bottom side of the dash using the provided 3/8"-16 x 7/8"L hex flange bolt and flange lock nut (Figure 14).

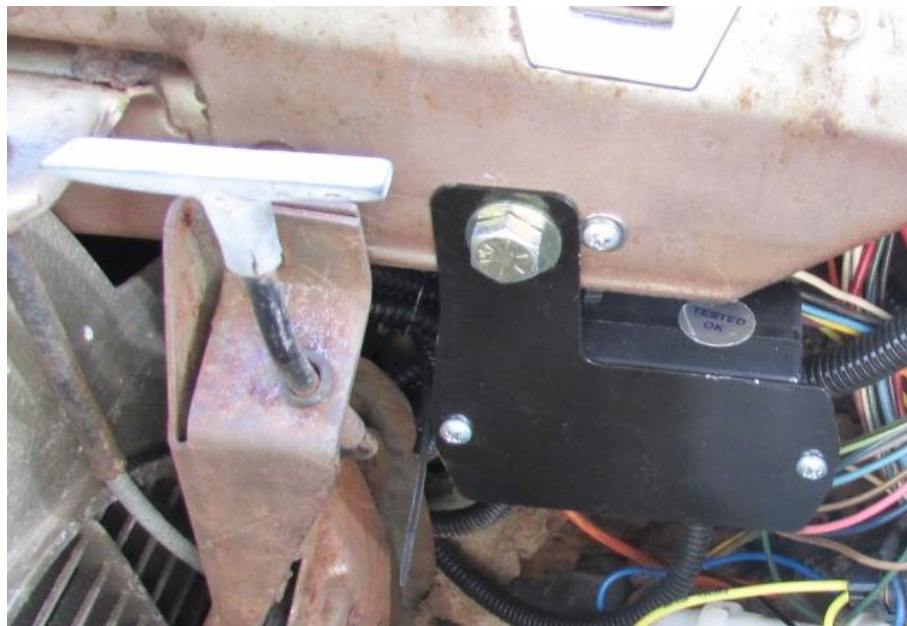


Figure 14 - Install Control Module

18. With the wiper control module in place, plug in the wiper switch and wiring harness connectors into the control module (Figure 15 on the next page).



Figure 15– Connect Wiper Switch & Harness to Module

19. Connect the yellow wire under the dash to a 12V ignition or accessory switched source. (Circuit is active when the key is in the run position). This lead is supplied with an inline 30 amp ATO fuse.
20. Connect the black wire with the round eyelet to a ground located under the dash. Make sure a proper ground is obtained by removing any rust or paint from the metal.
21. Connect the negative battery lead and test the wiper system. Upon a successful test, the wiper conversion is now complete. Secure the new wiring harness under the dash and in the engine compartment. Re-install the cowl panel and wiper arms along with any other component that had been removed.

NOTE: In some cases high energy ignition systems have caused interference with the correct operation of the Selecta-Speed Wiper Kit due to spark plug wires routed closely to the wiper motor. If this occurs, re-routing your spark plug wires may be necessary.