



**Detroit Speed, Inc.  
 Selecta-Speed Wiper Kit  
 1961-62 B-Body  
 P/N: 121660**

A downpour of rain will no longer hinder your ability to clearly see the road. The Detroit Speed Selecta-Speed Wiper Kit provides you with the performance and convenience of a late model wiper system in a package that easily and cleanly mounts in your 1961-62 B-Body.



Item #	Description	Quantity
1	Wiper Motor Assembly	1
2	Wiper Control Module w/ Mounting Plate	1
3	Wiper Harness	1
4	Wiper Switch Assembly	1
5	Pitman Arm E-Clip	1
6	Wiper Switch Clocking Spacer	1
7	Wiper Switch Retaining Nut	1
8	Motor Plate Extension Cap	1
9	Motor Plate Extension Cap O-Ring	1
11	10-24 x 1/2"L SS Flat Head Screws	4
12	5/16"-18 x 1"L Flange Head Bolt	1
13	5/16"-18 Nylock Nut	1
14	5/16" SAE Flat Washer	1
15	Instructions	1

This kit features a seven speed wiper system with five delays, low speed, and high speed. The new pitman arm, included in the kit, connects directly to your existing wiper linkage. A rotary switch is also included, along with a complete wiring harness and control module.

This kit does feature a washer pump option as the wiper switch does have a push button function. The wiring harness/control module is equipped with a power and ground wire to install an inline electric washer pump. Detroit Speed does offer a washer pump kit available as part number 121102.

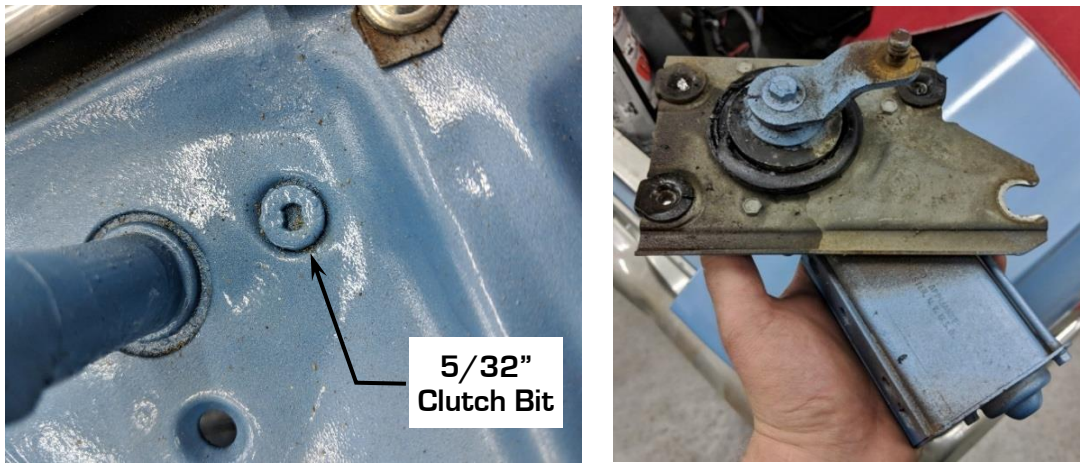
### Installation Instructions:

1. Before beginning, please ensure that the parts included with your kit match the parts list above. Ensure that the factory wiper system is in its "Parked" position. Disconnect the battery power by removing the negative battery lead from the battery.
2. Disconnect the original wiper motor wiring from the motor along with the windshield washer hoses. The original wiring will not be used with the new Selecta-Speed Wiper Kit. A custom harness is provided to replace the original. **NOTE: If you decide to cut the old wires please pay special attention to properly terminate the wire ends to avoid possible shorting.**
3. Mark the position of the wiper arms by placing masking tape on the windshield. This will assure the arms are accurately replaced. Remove the wiper arms and the cowl panel from the vehicle (Figure 1).



**Figure 1 – Remove Wiper Arms & Cowl Panel**

4. Disconnect the wiper linkage from the wiper motor pitman arm by removing the clip. Remove the stock wiper motor by removing the 4 fasteners from the cowl area (Figure 2 on the next page). **NOTE: The OEM hardware uses 5/32" clutch bit (butterfly or type G) fasteners.**



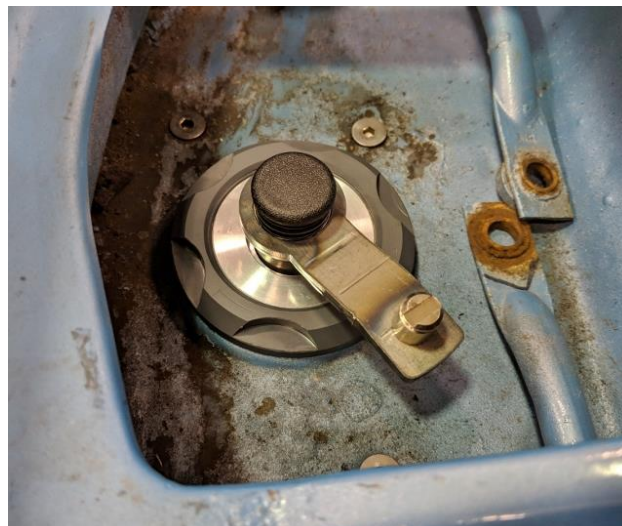
**Figure 2 - Stock Wiper Motor**

5. Mount the new wiper motor assembly to the bottom of the cowl area where the original wiper motor was mounted. Use the four supplied 10-24 x 1/2"L stainless steel flat head Allen screws to mount the wiper motor assembly to the vehicle (Figure 3).



**Figure 3 - Mount Wiper Motor**

6. Seat the provided O-ring onto the the gray motor plate extension cap. Slide the motor plate extension cap over the pitman arm and hand tighten to the wiper motor assembly (Fig. 4).



**Figure 4 - Install Wiper Motor**



7. Attach the new pitman arm to the original wiper linkage using the provided pitman arm E-clip (Figure 5). **NOTE: The Selecta-Speed wiper kit is shipped with the pitman arm in the "parked" position.** Do not move the pitman arm by hand to attach the wiper linkage. If the pitman arm is moved from the original "parked" position from Detroit Speed, it may result in the wiper blades stopping in the wrong spot on the windshield.



Figure 5 – Attach Wiper Linkage to Pitman Arm

8. The Selecta-Speed wiper switch will replace the factory wiper switch. Loosen the screw on the wiper knob with a flat blade screwdriver and remove it from the factory switch. Remove the wiper switch nut from the factory switch using a suitable tool.
9. Remove the factory wiper switch bezel along with the wiper switch from the dash. Remove the connector from the back of the switch (Figure 6). Tie up the original wiring under the dash, if desired.

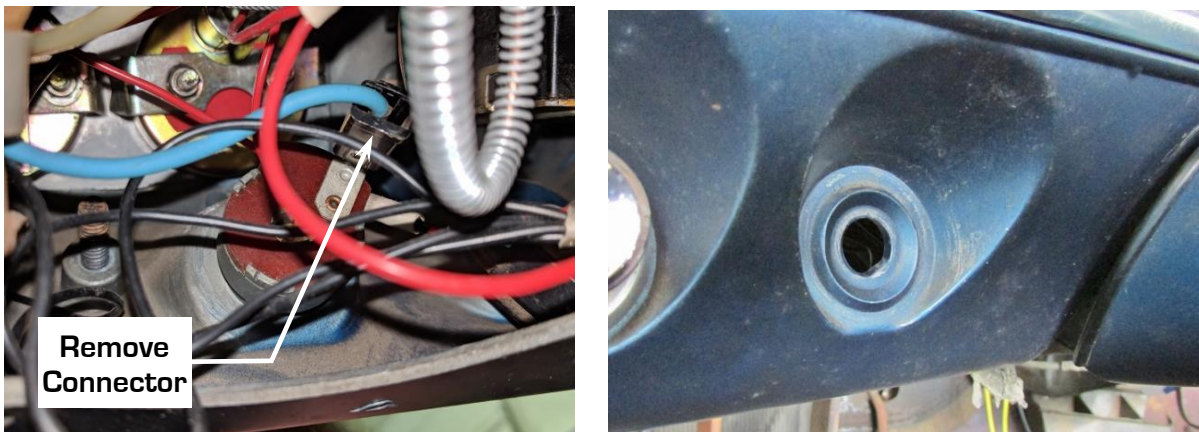


Figure 6 – Remove Factory Wiper Switch

10. Place the wiper switch clocking spacer on the new wiper switch by lining up the anti-rotation tab on the switch with the lower slot on the clocking spacer (Figure 7 on the next page). Install the switch into the original dash location by lining up the flat on the clocking spacer with the flat in the switch mounting hole (Figure 8 on the next page).

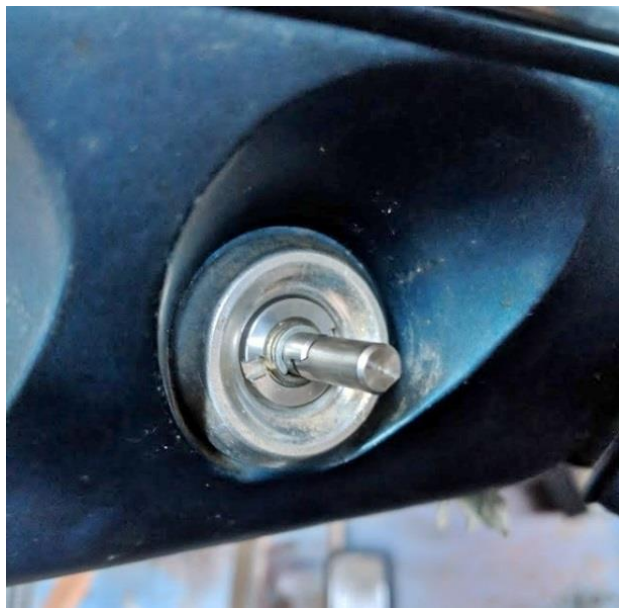


**Figure 7 - Wiper Switch Clocking Spacer**



**Figure 8 - Install Wiper Switch**

11. Place the original wiper bezel over the wiper switch. Install the provided wiper switch retaining nut onto the wiper switch. Tighten the retaining nut with a suitable tool (Figure 9).



**Figure 9 - Wiper Switch Retaining Nut**

**NOTE:** Detroit Speed offers reproduction billet aluminum knobs and bezels to replace worn or missing original parts. The wiper knob is part number 9312092 and the bezel is part number 9912149 (Figure 10).



**Figure 10 - Billet Aluminum Wiper Knob & Bezel**



12. Install the original wiper knob onto the new switch shaft. Align the screw with the flat on the switch shaft and tighten (Figure 11). **NOTE:** Make sure the screw locks onto the flat on the switch shaft.



Figure 11 - Install Wiper Knob

13. Next, drill out the existing hole from the original wiper motor wiring harness in the firewall (Figure 12) to 1-1/4" to allow the wiper motor connector to pass through the firewall.

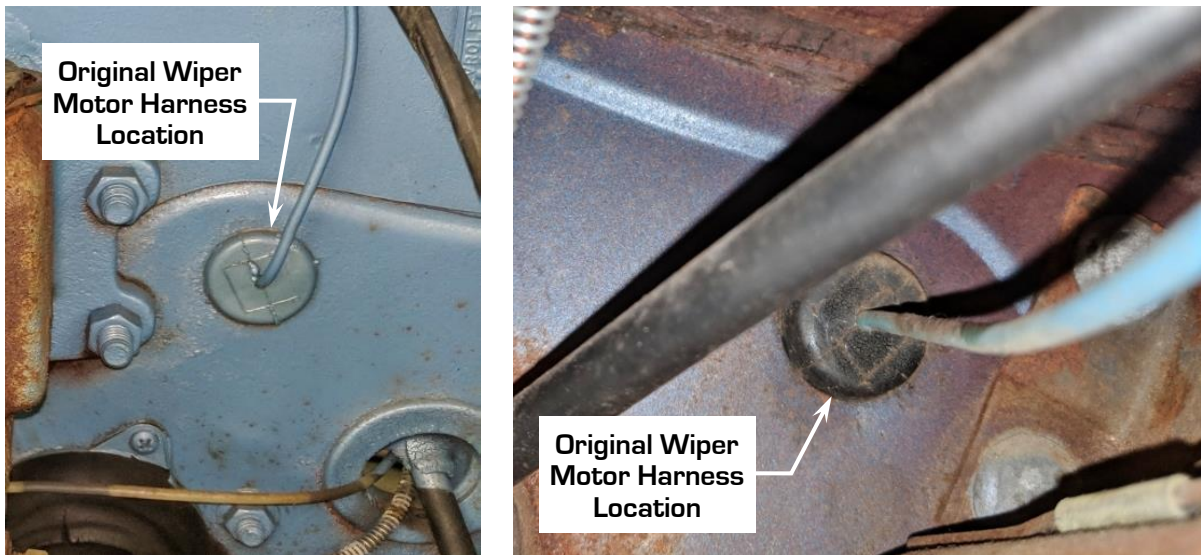


Figure 12 - Drill Out Existing Firewall Harness Location

14. Place the provided wiring harness underneath the dash. Route the wiper motor connector side of the wiring harness (Figure 13) through the firewall.

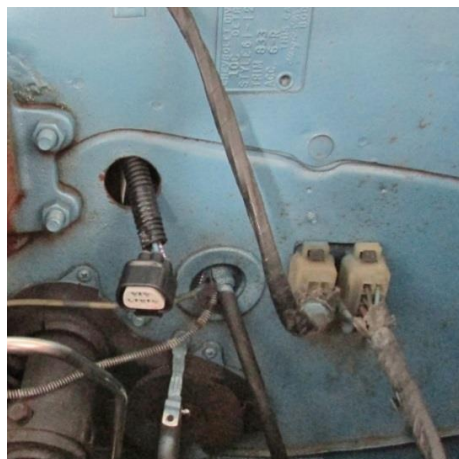


Figure 13 - Wiper Motor Connector

15. A rubber grommet is already installed on the wire loom from the wiper motor wires. Once there is enough of the loom through the firewall, plug the connector into the wiper motor. Move the grommet on the loom and install it into the firewall to seal the engine compartment from the inside of the vehicle (Figure 14).



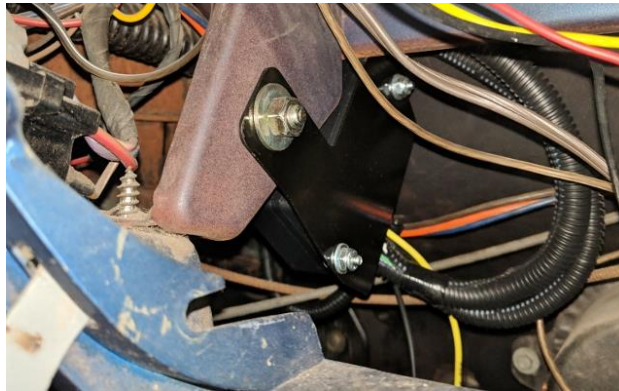
**Figure 14 - Install Wiper Motor Harness**

16. The Detroit Speed Selecta-Speed harness does include a weather pack connector to install an optional electric inline washer pump into your vehicle (Figure 15). Detroit Speed does offer a washer pump kit you can purchase separately as part number 121102.



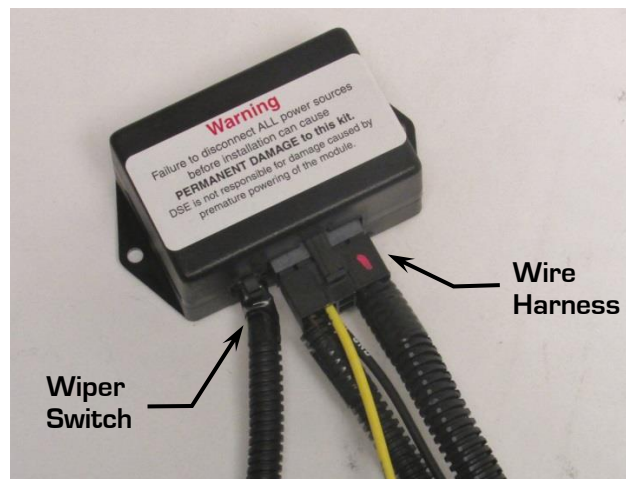
**Figure 15 - Washer Pump Connection**

17. If you have purchased the Detroit Speed washer pump kit, use the instructions from that kit to complete the washer pump kit installation. If you do not want to use the washer pump feature, you can tie wrap this connector/loom up under the dash.
18. Next, you will need to install the wiper control module under the dash. It can be mounted anywhere you prefer however there is a recommended location on the driver's side of the glove box.
19. On the left hand side of the glove box, there is a bracket with a hole where you can mount the module plate assembly. Install the control module using the provided 5/16"-18 x 1"L flange head bolt, washer and Nylock nut (Figure 16 on the next page). **NOTE:** You may need to remove the glove box board to install the module plate assembly.



**Figure 16 - Install Control Module**

20. With the wiper control module in place, plug in the wiper switch and wiring harness connectors into the control module (Figure 17).



**Figure 17 - Connect Wiper Switch & Harness to Module**

21. Connect the yellow wire under the dash to a 12V ignition or accessory switched source. [Circuit is active when the key is in the run position]. This lead is supplied with an inline 30 amp ATO fuse.
22. Connect the black wire with the round eyelet to a ground located under the dash. Make sure a proper ground is obtained by removing any rust or paint from the metal.
23. Connect the negative battery lead and test the wiper system. Upon a successful test, the wiper conversion is now complete. Secure the new wiring harness under the dash and in the engine compartment. Re-install the cowl panel and wiper arms along with any other component that had been removed.

**NOTE:** In some cases high energy ignition systems have caused interference with the correct operation of the Selecta-Speed Wiper Kit due to spark plug wires routed closely to the wiper motor. If this occurs, re-routing your spark plug wires may be necessary.