



## **Cabin Air Filter**

### **Removal & Installation Instructions**

To maintain air conditioning efficiency, replace the air filter according to the manufacturer's maintenance schedule.

Always use an air filter. Removing the filter may decrease system performance by allowing dust to lower the efficiency of A/C and heating system components.

Prior to the installation of this DENSO First Time Fit® Cabin Air Filter, you must read these instructions completely.

---

#### **Definition of Terms**

- ⚠WARNING:** Describes precautions that should be observed in order to prevent injury or death to the user during installation.
- ⚠CAUTION:** Describes precautions that should be observed in order to prevent damage to the vehicle or its components, which may occur during installation if sufficient care is not taken.
- NOTE:** Provides additional information that facilitates installation work.

---

#### **General Service Information and Requirements**

**⚠WARNING:** To prevent the Supplemental Restraint System (SRS, Air Bag System) from operating, remove the ground (negative) cable from the battery, then wait at least 90 seconds before starting this procedure. This allows the backup power system to discharge.

**NOTE:** For more detailed instructions please refer to the vehicle manufacturer's service manual.

#### **REQUIRED TOOLS:**

- Safety Goggles
- Assorted Hand Tools

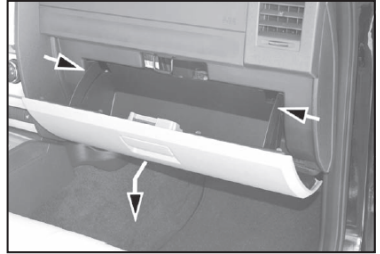
#### **SAFETY PRECAUTIONS:**

- Always wear safety goggles

## **Cabin Air Filter Removal**

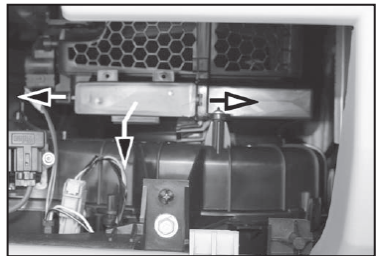
The information below explains necessary procedures and tools to remove and install the Cabin Air Filter (CAF). This application uses two Cabin Air Filter elements.

1. Open the glove compartment, and press in on the top, to release the stops, allowing it to hang down.



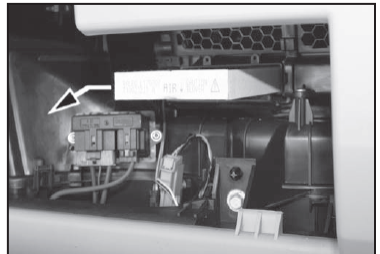
**Fig. 1**

2. Locate and open the CAF access cover, by carefully unlatching it, in a forward motion.

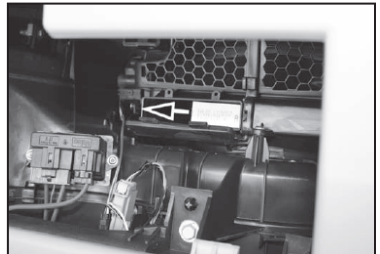


**Fig. 2**

3. Remove the first CAF element from the blower unit assembly, and then slide the second CAF element to the left and remove it. The original filter elements can be discarded.



**Fig. 3**



**Fig. 4**

## **Cabin Air Filter Installation**

4. Install the replacement second CAF element into the blower assembly and slide it to the right, and then install the replacement first CAF element into the blower assembly.
5. Close the CAF access cover, verifying the latch catches, and then close the glove compartment.

## **Noise Test**

6. Reconnect the battery ground cable.
7. Engine ON, A/C ON, blower speed on high.
8. Listen for any abnormal air noises from the air filter area.