

CANsmart™ User Guide // BMW

This user guide is designed to provide additional information and support to be used alongside the physical user manual that is included with your CANsmart.



Device Overview

Familiarize yourself with the CANsmart unit, the four outputs (or circuits) and the included plug-&-play wiring adapters so you can plan your accessory installations.



Installation Guide

See just how easy it is to install a CANsmart™ Controller, connect accessories and change settings via the Accessory Manager Software.



Lighting Controls

A visual reminder showing how to independently turn on/off and dim two sets of auxiliary lights using the BMW WonderWheel and other original switches.

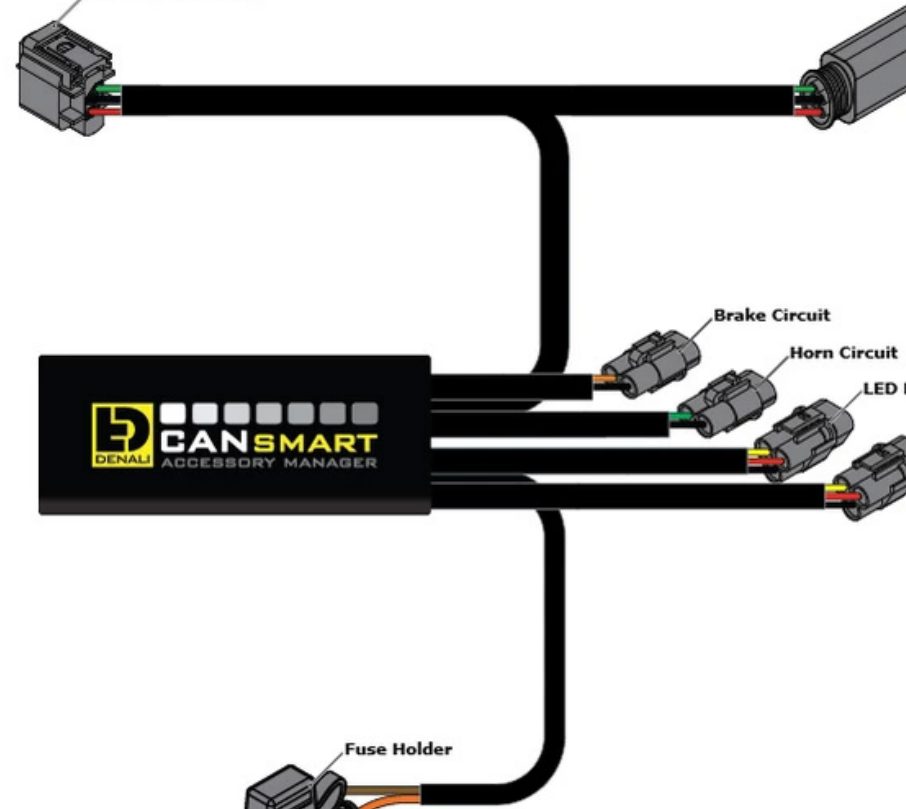


Troubleshooting Guide

With over 35 custom features and settings you might want a little extra help getting your CANsmart™ configured to your specific accessory setup.

Device Overview

Familiarize yourself with the CANsmart unit, the four outputs (or circuits) and the included plug-&-play wiring adapters so you can plan your accessory installations.



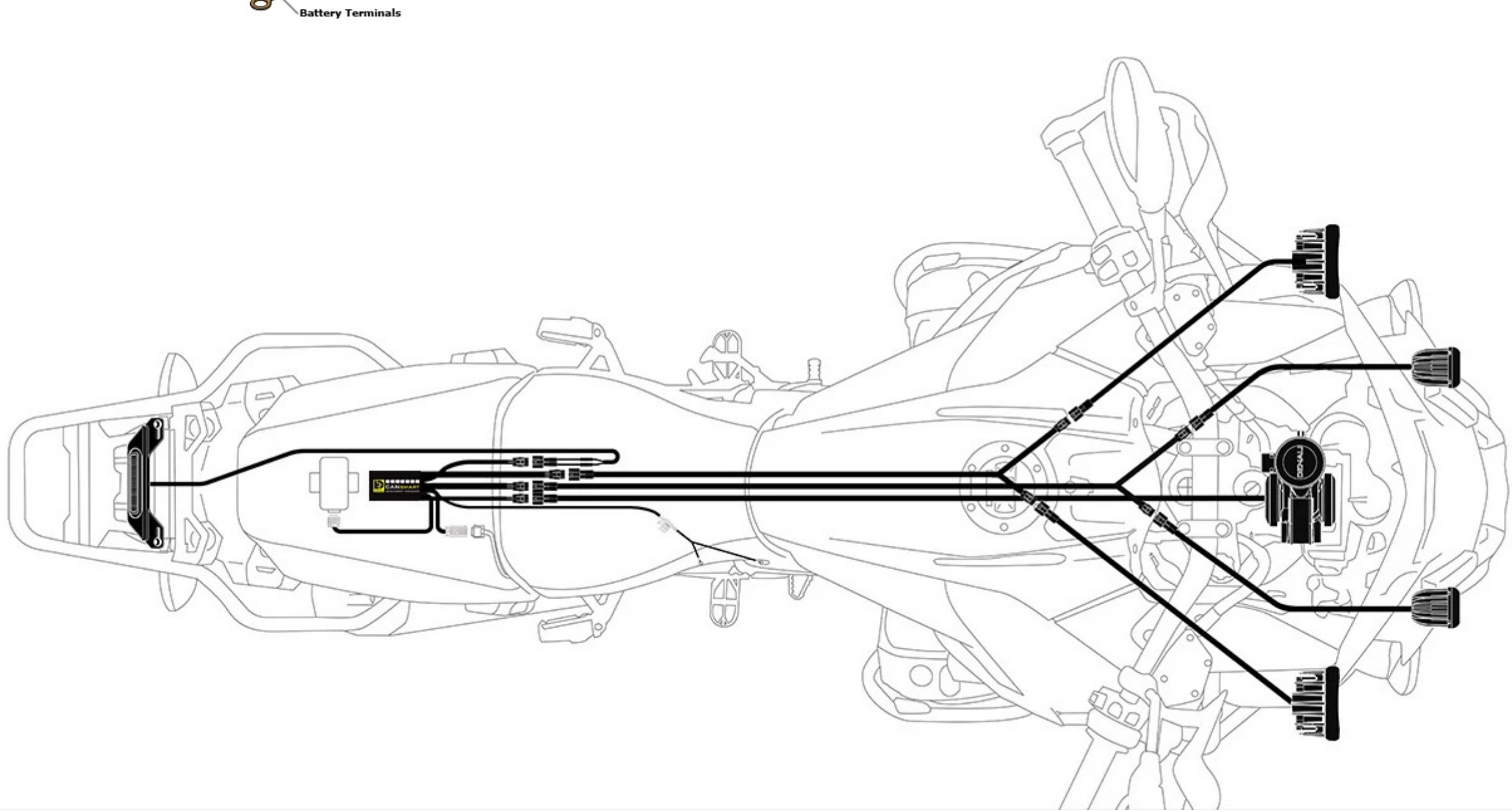
The default device settings allow you to connect and control DENALI lights, horns, and brake lights without having to connect to the software to change settings. Simply connect your accessories to the corresponding circuit and you are ready to ride!

Auxiliary Light Set One: Long three-wire circuit (red, yellow, black)
Default Fuse Setting: 10A

Auxiliary Light Set Two: Short three-wire circuit (red, yellow, black)
Default Fuse Setting: 4A

Horn Circuit: Short two-wire circuit (green, black)
Default Fuse Setting: 25A

Brake Light Circuit: Short two-wire circuit (orange, black)
Default Fuse Setting: 2A



Installation Guide

This installation guide provides supplemental information to be used alongside the physical user manual that is included with your CANsmart. Click on the links below to view the original PDF user manuals.

R1200LC & R1250 Series

R1200 Hex Series

K1600 & F850 Series

F800 & F700 Series



Step One: Connect to the CANbus

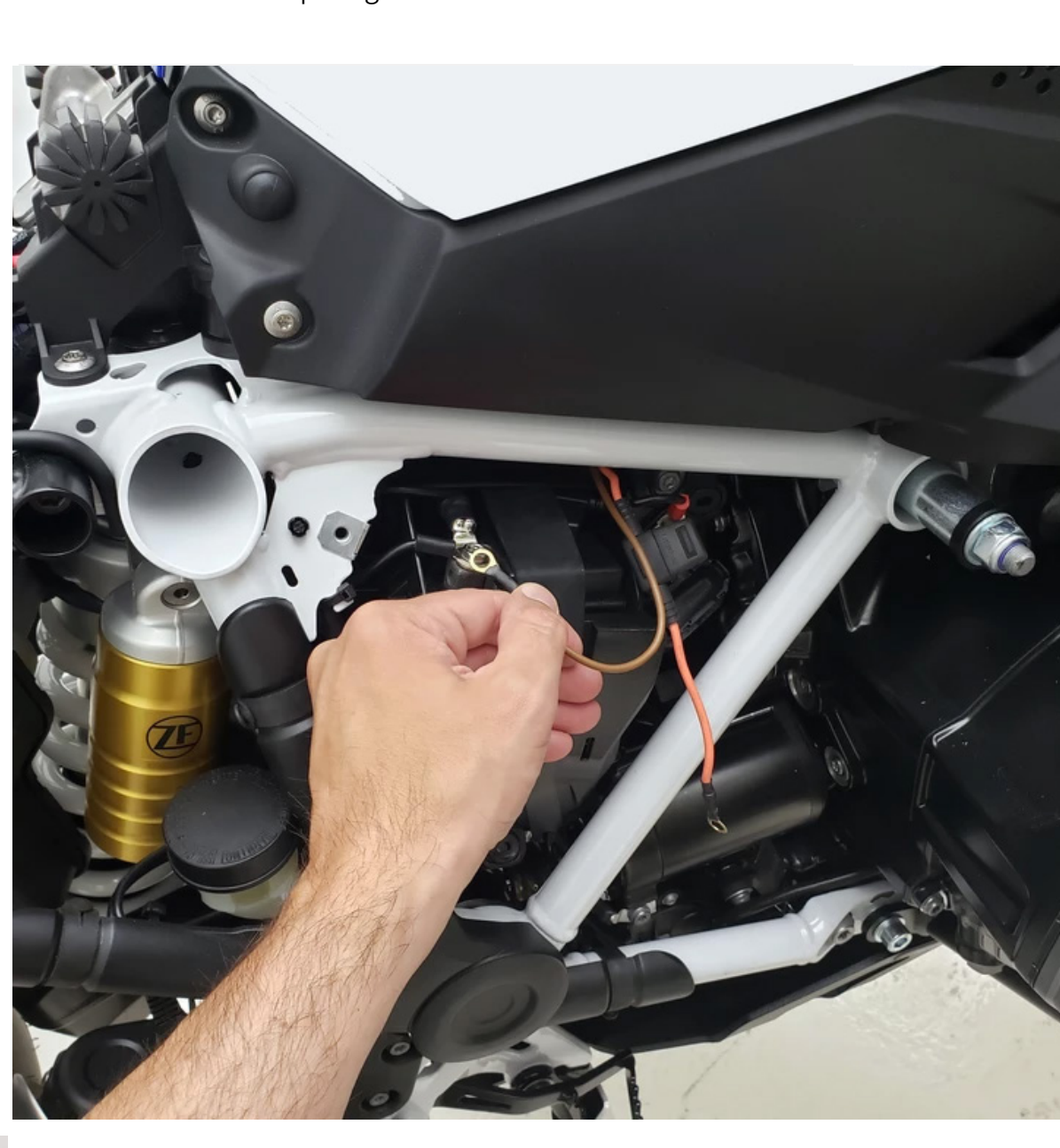
Plug the CANsmart unit into your bikes CANbus electrical system via a connector located under your seat. For R1200LC and R1250 models you connect to the Tire Pressure Monitor System (RDC). For all other BMW models you connect to the alarm system (DWA). Scroll down to see exactly which plug to connect to on your bike.

CANbus Connection Locations

R1250 GS 2019 Connect to the RDC connector located under the passenger seat at the rear of the opening.	R1200 GS 2013-2018 Connect to the RDC connector located under the passenger seat at the rear of the opening.	R1200 RT 2014-2018 Connect to the DWA connector located under the passenger seat at the rear of the opening.	R1200 R/RS 2015-2018 Connect to the DWA connector located under the passenger seat at the front left of the opening.
R1200 GS 2004-2012 Connect to the DWA connector located at the rear of the bike under the rear rack.	K1600 ALL 2011-2019 Connect to the DWA connector located under the passenger seat to the rear-left of the opening.	F700/800 GS 2008-2018 Connect to the DWA connector located under the passenger seat at the rear of the opening.	F800 S 2006-2010 Connect to the DWA connector located under the passenger seat on the right side.

Step Two: Connect to the Battery

Route the orange and brown power lead down to your battery box and connect the ring terminals directly to the battery.



Step Three: Mount Your Accessories

Mount your auxiliary lights, horn, brake light and any other accessories that you plan to connect to the CANsmart.

Route and secure the wire leads from your accessories towards the CANsmart device located under the seat.

Step Four: Connect Your Accessories

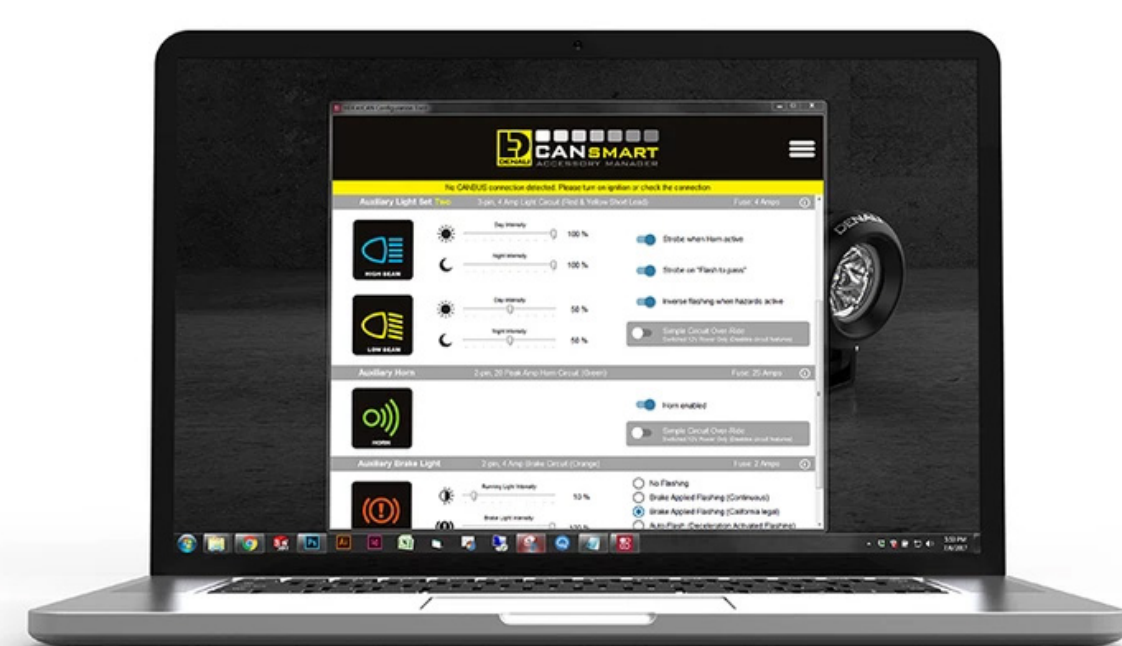
Connect the included plug-&-play wiring adapters & extensions to the CANsmart and route them through the bike up to your installed accessories.

If you are installing DENALI Lights, a SOUNDBOMB horn or DENALI Brake Lights simply connect to the corresponding CANsmart circuit and there will be no programming necessary. All accessory features will be active and you are ready to ride!



Optional Step Five: Customize Settings

If you would like to change any of the circuit fuse values, turn off or adjust the default features, or power other 3rd party accessories you can download the Accessory Manager Software and connect your CANsmart device to your computer.



CANsmart™ Accessory Manager Software // Default Settings

Powered by **HEX INNOVATE** **DENALI CANSMART ACCESSORY MANAGER**

Auxiliary Light Set One 3-pin, 10 Amp Light Circuit (Red & Yellow Long Lead) Fuse: 10 Amps

	<p>Day Intensity: 30%</p> <p>Night Intensity: 100%</p>	<ul style="list-style-type: none"> <input checked="" type="checkbox"/> Off when turn signal active <input checked="" type="checkbox"/> Strobe when Horn active <input checked="" type="checkbox"/> Strobe on "Flash to pass" <input checked="" type="checkbox"/> Inverse flashing when hazards active
	<p>Day Intensity: 40%</p> <p>Night Intensity: 10%</p>	<ul style="list-style-type: none"> <input type="checkbox"/> Two-Wire Dimming Mode Use this mode for two-wire auxiliary LED lights <input type="checkbox"/> Simple Circuit Over-Ride Switched 12V Power Only (Disables circuit features)

Auxiliary Light Set Two 3-pin, 4 Amp Light Circuit (Red & Yellow Short Lead) Fuse: 4 Amps

	<p>Day Intensity: 70%</p> <p>Night Intensity: 100%</p>	<ul style="list-style-type: none"> <input type="checkbox"/> Off when turn signal active <input checked="" type="checkbox"/> Strobe when Horn active <input checked="" type="checkbox"/> Strobe on "Flash to pass" <input checked="" type="checkbox"/> Inverse flashing when hazards active
	<p>Day Intensity: 70%</p> <p>Night Intensity: 50%</p>	<ul style="list-style-type: none"> <input checked="" type="checkbox"/> Two-Wire Dimming Mode Use this mode for two-wire auxiliary LED lights <input type="checkbox"/> Simple Circuit Over-Ride Switched 12V Power Only (Disables circuit features)

Auxiliary Horn 2-pin, 20 Peak Amp Horn Circuit (Green) Fuse: 25 Amps

	<ul style="list-style-type: none"> <input checked="" type="checkbox"/> Horn enabled <input type="checkbox"/> Simple Circuit Over-Ride Switched 12V Power Only (Disables circuit features)
--	---

Rear / Brake Lights 2-pin, 4 Amp Brake Circuit (Orange) Fuse: 2 Amps

	<p>Running Light Intensity: 50%</p> <p>Brake Light Intensity: 100%</p>	<ul style="list-style-type: none"> <input type="checkbox"/> No flashing <input type="checkbox"/> Brake Applied Flashing (Continuous) <input type="checkbox"/> Brake Applied Flashing (California legal) <input type="checkbox"/> Auto-Flash (Deceleration Activated Flashing) <input checked="" type="checkbox"/> California Legal & Auto-Flash
		<ul style="list-style-type: none"> <input type="checkbox"/> Simple Circuit Over-Ride Switched 12V Power Only (Disables circuit features)