



RV TOW Harness Wiring Kit INSTALLATION INSTRUCTIONS

Fits: 2008-2011 Buick Enclave
2008-2011 Chevrolet Malibu
2009-2011 Chevrolet Traverse

- Kit Includes:
- (1) Wiring Harness with 4-Flat Connector
 - (1) 48" 4-Flat Extension
 - (20) 15" Cable Tie
 - (1) 4-Flat Bracket
 - (3) #8 Self-Tapping Ground Screw

RV TOW HARNESS INSTALLATION INSTRUCTIONS

1. Read instructions thoroughly before beginning. Buick Enclave / Chevrolet Traverse

2. Open the rear tailgate. Using a flat screwdriver remove the plastic caps that cover the screws that hold both taillight assemblies to vehicle. Using a 7mm socket remove two screws that hold taillights to vehicle. Gently pull taillight away from the vehicle and locate vehicle's factory wiring harness connectors. Separate connectors from both sides and set aside shown in **Figure 1**. Inspect connectors for dirt and debris and clean if necessary.



Figure 1

3. Starting on driver's side position RV harness with connectors containing Yellow wires between separated vehicle harness connectors. Press connectors firmly into vehicle connectors until they lock into place. Pull on connectors to ensure the locks are engaged.

4. Locate a clean and accessible mounting location on the vehicle near the RV harness ends within reach of white wire and ring terminal. Remove any debris or undercoating to expose a clean metal surface and drill a 3/32" hole.

Caution: Take care not to drill through the body or any exposed surface.

5. Attach ring terminal on the White wire using the ground screw provided.

6. Cut the cable ties on 4-Flat portion of harness. Route the remaining portion of the RV harness with connector ends containing the Green wire through the opening behind the taillight.

7. Under the vehicle route the portion of harness with the T-Connector ends containing Green wire to the Passenger side along the rear frame rail and up through the opening to behind the taillight. Repeat Step 3 for connector

plugging. Secure RV Harness to factory wire harness near the clip shown in **Figure 2** using a cable tie.

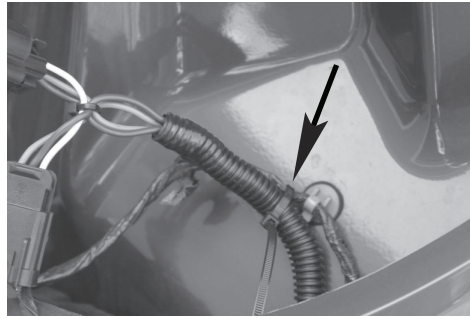


Figure 2

8. Position the silver heat shield so that the conduit near the exhaust is covered and secure each end with a cable tie. Secure the conduit to frame rail with cable ties shown in **Figure 3**.

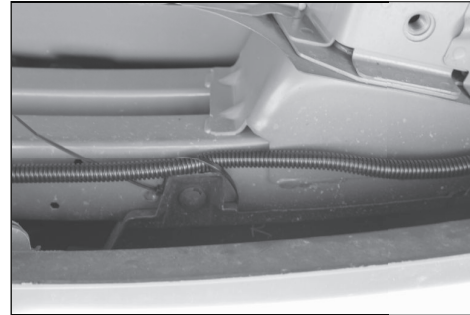


Figure 3

9. Route the 4-Flat portion of RV harness down through the taillight opening. Route it around the spokes shown in **Figure 4** and secure with tie straps. Continue routing along side the factory wire harness until it reaches the brake lines.



Figure 4

10. Continue routing 4-Flat along the brake lines up and around the wheel/suspension assembly to the side frame rail until you reach the driver's side wheel well.

11. Starting at the top of the wheel well remove the two clips shown in **Figure 5**. Route a fish tape or stiff wire down to the bottom right of the wheel well.

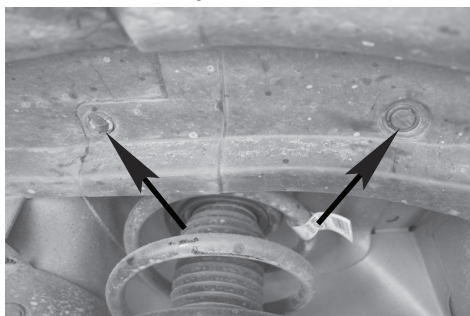


Figure 5

12. Attach 4-Flat to fish tape and pull to top of wheel and out through the opening shown in **Figure 6**. Route fish tape up through opening on the bottom left corner to opening on the top and pull 4-flat to the front of the wheel well. Replace any clips removed in Step 10.



Figure 6

Caution: Make sure to avoid areas that contain moving parts or could cut, pinch or burn the wires when routing the 4-flat harness towards the front of the vehicle. Also avoid routing harness near the fuel lines as it may cause the fuel to ignite.

Failure to follow these warnings may cause property damage, personal injury or loss of life.

13. Locate the front frame rail that goes across the front of the vehicle. Locate a suitable position to mount the 4-Flat bracket shown in **Figure 7**. Using the bracket as a template mark the two holes and drill two 3/32" holes and attach the bracket using the two remaining screws.

Caution: Take care not to drill through the body or any exposed surface.

Secure 4-Flat to frame rail with a cable tie.

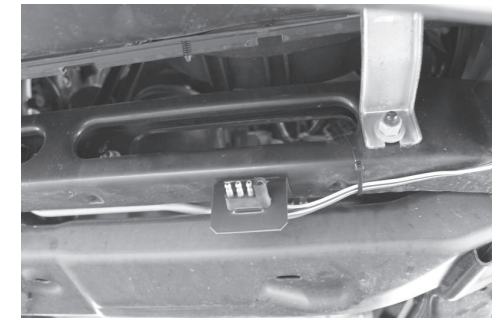


Figure 7

14. With the 4-flat extension plugged into the RV harness on one end and the motorhome on the other, test that the functions work on the Buick Enclave or Chevrolet Traverse. These functions will only work on the brake/tail combination lamp.

4-Flat Harness Color Code:
White - Ground
Brown - Tail Lights
Green - Right Turn and Brake Signal
Yellow - Left Turn and Brake Signal

When not in use store the 4-flat extension in the vehicles glove box.

15. At the rear of the vehicle secure any loose wires to the vehicle's crossmember using cable ties provided. Re-install taillights to vehicle.

RV TOW HARNESS

INSTALLATION INSTRUCTIONS

1. Read instructions thoroughly before beginning. Chevrolet Malibu

2. Open the trunk. Using a flat screwdriver remove the 2 plastic clips on each side of vehicle shown in **Figure 1**.

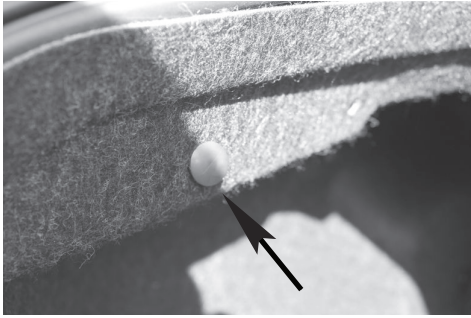


Figure 1

3. Remove the cargo net plastic screws on each side of vehicle shown in **Figure 2**.

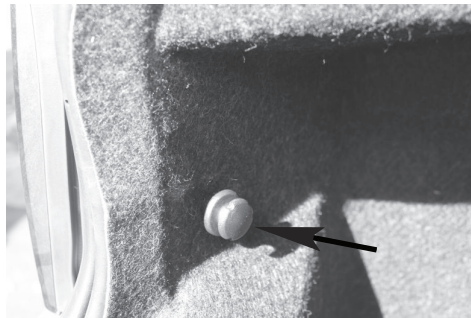


Figure 2

4. Remove the 3 plastic wing nuts that hold taillights to vehicle on each side shown in **Figure 3**.

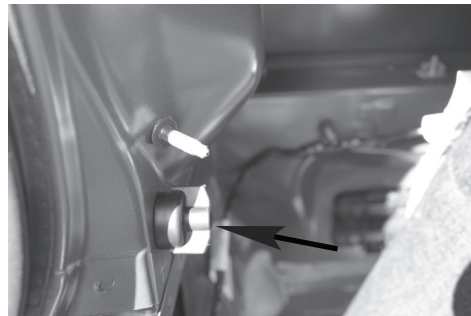


Figure 3

5. Gently pull taillights away from vehicle and locate vehicle's factory wiring harness connectors. Separate connectors from both sides and set aside shown in **Figure 4**. Inspect connectors for dirt and debris and clean if necessary.



Figure 4

6. Starting on driver's side position RV harness with connectors containing Yellow wires between separated vehicle harness connectors. Press connectors firmly into vehicle connectors until they lock into place. Pull on connectors to ensure the locks are engaged.

7. Locate a clean and accessible mounting location on the vehicle near the RV harness ends within reach of white wire and ring terminal. Remove any debris or undercoating to expose a clean metal surface and drill a 3/32" hole.

Caution: Take care not to drill through the body or any exposed surface.

8. Attach ring terminal on the White wire using the ground screw provided.

9. Cut the cable ties on 4-Flat portion of harness. Route the remaining portion of the RV harness with connector ends containing the Green wire through the opening behind the taillight.

10. Under the vehicle route the portion of harness with the T-Connector ends containing Green wire to the Passenger side along plastic bumper and up through the opening to behind the taillight. Repeat Step 6 for connector plugging.

11. Position the silver heat shield so that the conduit near the exhaust is covered and secure each end with a cable tie. Secure the conduit to frame with cable ties.

12. Route the 4-Flat portion of RV harness down through the taillight opening. Route towards front of vehicle following brake lines and secure along the way with cable ties.

13. At front of vehicle remove 5 bolts on brush guard shown in **Figure 5**. Route around support beam to front of vehicle above the brush guard.

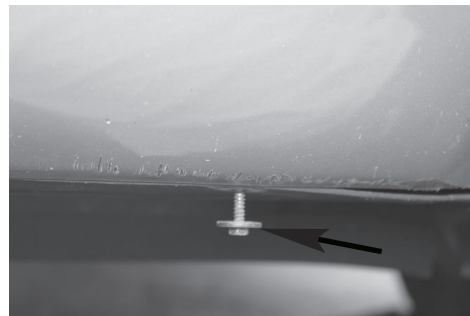


Figure 5

Caution: Make sure to avoid areas that contain moving parts or could cut, pinch or burn the wires when routing the 4-flat harness towards the front of the vehicle. Also avoid routing harness near the fuel lines as it may cause the fuel to ignite.

Failure to follow these warnings may cause property damage, personal injury or loss of life.

14. Locate the front frame rail that goes across the front of the vehicle. Locate a suitable position to mount the 4-Flat bracket shown in **Figure 6**. Using the bracket as a template mark the two holes and drill two 3/32" holes and attach the bracket using the two remaining screws.

Caution: Take care not to drill through the body or any exposed surface.



Figure 6

15. With the 4-flat extension plugged into the RV harness on one end and the motorhome on the other, test that the functions work on the Chevrolet Malibu. These functions will only work on the brake/tail combination lamp.

4-Flat Harness Color Code:

White - Ground

Brown - Tail Lights

Green - Right Turn and Brake Signal

Yellow - Left Turn and Brake Signal

When not in use store the 4-flat extension in the vehicles glove box.

16. At the rear of the vehicle secure any loose wires to the vehicle's crossmember using cable ties provided. Re-install taillights to vehicle.