

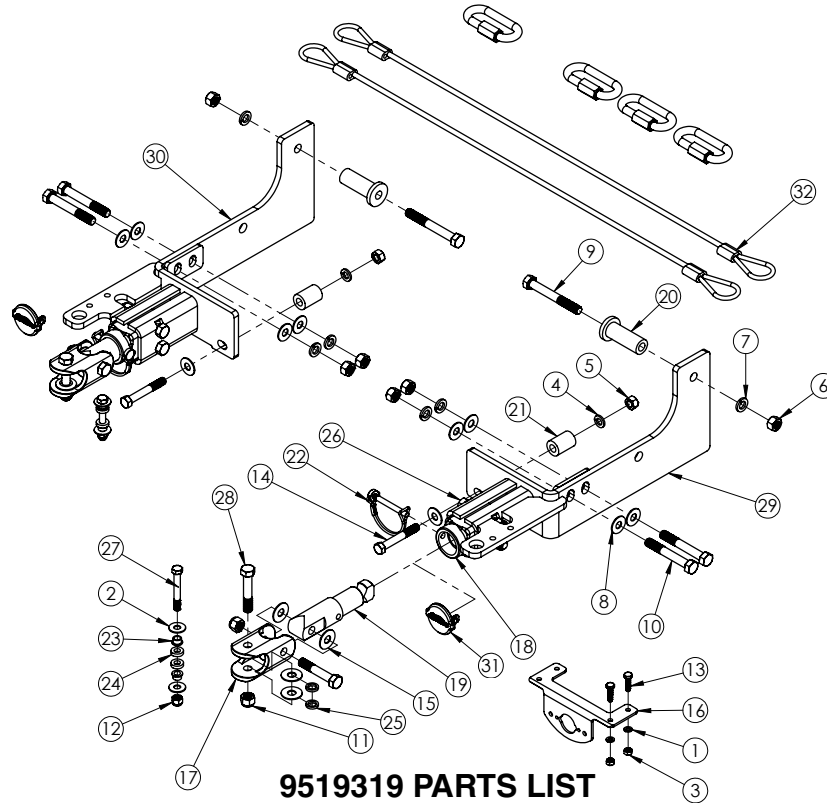
Demco

GMC Canyon
Chevrolet Colorado



BASEPLATE

Pin Height - 14 1/2" Center - 28 3/8"



9519319 PARTS LIST

ITEM	PART #	QTY	DESCRIPTION	ITEM	PART #	QTY	DESCRIPTION
1	00057	2	WASHER, .25 SPRING LOCK	17	15040	2	END JOINT
2	00059	4	WASHER, FLAT .375	18	15041	2	PULL BLOCK
3	00062	2	NUT .25NC HEX	19	15042-95	2	PULL STUD
4	00078	2	WASHER, SPRING LOCK, .438	20	15261	2	FRAME BUSHING
5	00079	2	NUT, .434NC HEX NUT	21	15262	2	BUSHING
6	00083	6	NUT, HEX, .50NC	22	15291	2	PN, 5/16" X 2.5 UL WIRE LOCK
7	00084	6	.50 LOCKWASHER	23	15338	4	FLANGE BUSHING
8	00205	10	WASHER, FLAT, .438	24	15339	4	SPACER/WASHER NYLON
9	01896	2	BOLT, .50 NC X 4.00 HEX HD GR.5	25	15340	4	SPACER/WASHER NYLON
10	01897	4	BOLT, .50NC X 3.50 HEX HD	26	15350	4	BOLT .50NC X 3.25 GR8 HEX
11	02178	8	NUT, .50NC LOCK, NY. INSERT	27	15351	2	BOLT .375 X 2.75 W/ 1.75 SHANK
12	02592	2	NUT, .375NC NYLON LOCK	28	15352	4	BOLT .50NC X 2.75 W/1.75 SHANK
13	04055	2	.25-20NC X 1 GD5 HEX	29	15357	1	BASEPLATE DRIVER SIDE
14	05104	2	BOLT .438NC X 3.00 GR5 HEX	30	15358	1	BASEPLATE PASSANGER SIDE
15	13317	8	CLEVIS SPACER WASHER	31	15675	2	BASEPLATE PLUG COVER
16	13612	1	PLUG MOUNT	32	6155	1	BASEPLATE SAFETY CABLE KIT

Please order replacement parts by PART NO. and DESCRIPTION

Please order replacement parts by PART NO. and DESCRIPTION

ASSEMBLY
OPERATION
REPLACEMENT PARTS

READ complete manual CAREFULLY
BEFORE attempting operation.

Doing Our Best to Provide You the Best

WARNING: FAILURE TO FOLLOW THESE INSTRUCTIONS CAN RESULT IN LOSS OF TOWING VEHICLE CONTROL, SEPARATION OF THE TOW BAR FROM THE TOWING VEHICLE, SEPARATION OF THE TOWED VEHICLE FROM THE TOW BAR, CAUSING SEVERE PERSONAL INJURY, DEATH, OR PROPERTY DAMAGE.

CAUTION

Safety is of utmost importance at all times. There are several items that must be checked each time before using and while using a tow bar.

Before allowing anyone to hook up or operate a tow bar, be sure they have read and understand the proper operating procedure.

DO NOT use worn or damaged cables and/or pins.

Be sure the **SAFETY CABLES** are hooked, chassis to chassis, to both the towing and towed vehicles using the crisscross method.

Check clearance between vehicles in a turning situation.

Check base plate mounting bolts for tightness and frame for metal fatigue.

Do not load the towed vehicle with anything as you may exceed the towing capacity of the tow bar.

Keep fingers away from pivot points to prevent personal injury.

Be sure the steering components of the towed vehicle are properly aligned.


Demco baseplates are designed for use on factory vehicle suspension setups. Demco baseplates are not recommended for use on modified suspensions lowered or raised. Towing vehicle must be larger and at least 500 lbs. heavier than the towed vehicle and tow bar combined.

NOTE: This unit can be backed up in moderate increments. Any severe backwards cornering could result in damage to the Tow Bar and/or towed vehicle chassis.

For automatic transmissions: Consult your vehicle owners manual for towing suitability with the drive shaft connected. Otherwise, the towed vehicle will have to be equipped with a transmission pump or drive shaft disconnect.

Check to make sure that all lights are in proper working order.

The information on towability of vehicles is reprinted with permission of MotorHome® Magazine, and is believed to be reliable. However, Demco does not warrant the information to be correct. Always consult your towed vehicle owner's manual and follow towing instructions. Each year, MotorHome® Magazine, compiles a list of vehicles that can be towed four-down behind a motorhome with no modifications required.

 **Caution: MotorHome® Magazine** left out any vehicles that have towing speed limits slower than 55 m.p.h., or distance limits of less than 200 miles. At a minimum, these vehicles require significant modification, such as the use of an aftermarket product, to make them towable. The availability of a **Demco Tow Bar Base Plate** does **not** imply that these vehicles can be modified or that there is an aftermarket product available. Refer to your vehicle owner's manual or consult your dealer to determine whether your vehicle can be modified to make it towable. Failure to observe this precaution could result in property damage or personal injury.

IMPORTANT INSTALLATION ITEMS

Demco products and accessories are intended to be installed by professional installers with experience, proper equipment and the ability to do modification work. Installers with these qualifications can be found in RV and Automotive Service Centers.

If the car to be towed has been in an accident, the chassis may be damaged in an area where the Base Plate attaches. It may no longer be suitable for towing. Extreme caution and careful examination are required in such a situation. It is also likely, even from a minor accident, that the hole alignment will be more difficult due to hole alignment problems.

Many Demco Base Plates are designed to use existing holes and hardware to mount the Base Plate to the towed vehicle. Even though the bolt is there, however, do not assume it is adequate for mounting the Base Plate. Manufacturers make many changes in hardware both within and between model years. Be sure the bolt is long enough to protrude past the nut a distance no less than 1/2 the diameter of the bolt, after the Base Plate is mounted. The threads should be in good condition. **We require that “*LOCTITE® Blue*” be used on all bolts.** If a new bolt is required, be sure it is SAE Grade 5 or Metric 8.8.

NOTE: The dimensional variations between otherwise identical vehicles can be considerable. Some minor modifications may have to be made to ensure a proper fit.

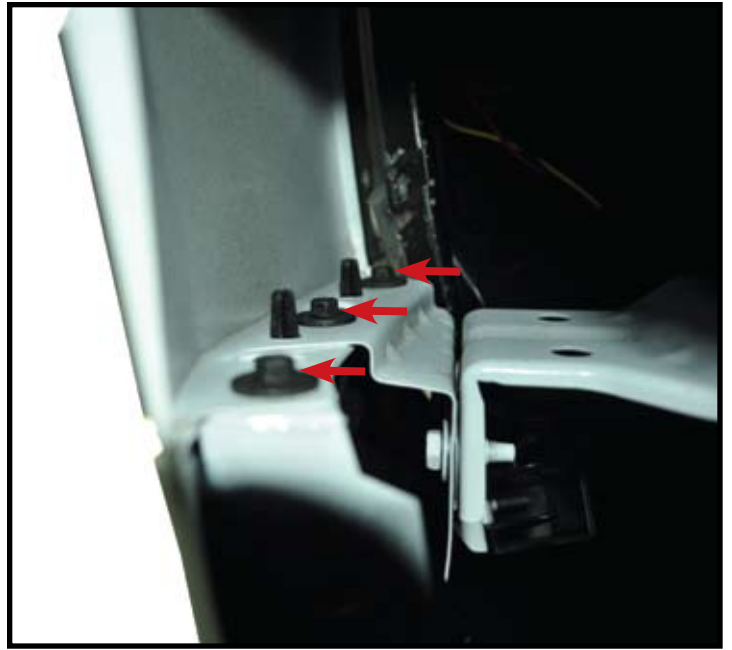
BOLT TORQUE SPECIFICATIONS

STANDARD BOLTS:			METRIC BOLTS:		
Size	Grade	Torque	Size	Grade	Torque
5/16"	5	18 ft/lbs	8mm	8	23 ft/lbs
3/8"	5	30 ft/lbs	10mm	8	45 ft/lbs
7/16"	5	50 ft/lbs	12mm	8	78 ft/lbs
1/2"	5	75 ft/lbs	14mm	8	125 ft/lbs

INSTALLATION INSTRUCTIONS



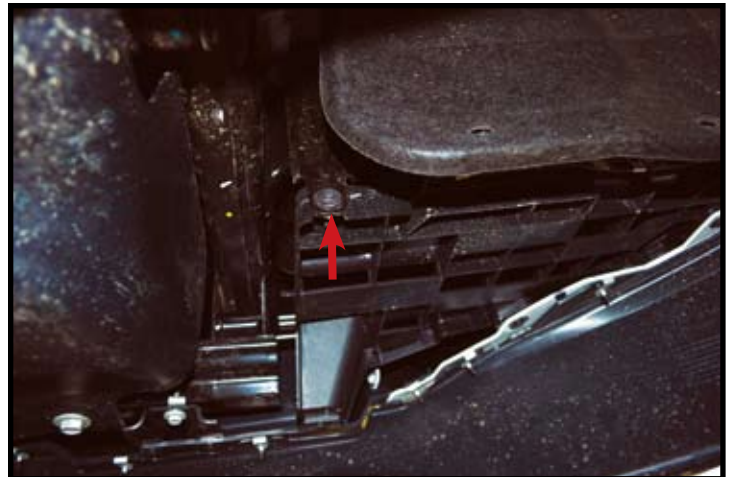
1. Remove nine plastic push fasteners from radiator cover and remove. **NOTE:** some models don't have this cover. If no cover, refer to step 6 and return to step 2 below.



3. Behind each wheel well insert remove three screws that attach the fascia to the fender.



2. Remove six T15 screws from front of each wheel well and repeat on other side. **NOTE:** If desired remove one T15 screw from top of wheel well for better access in next step.



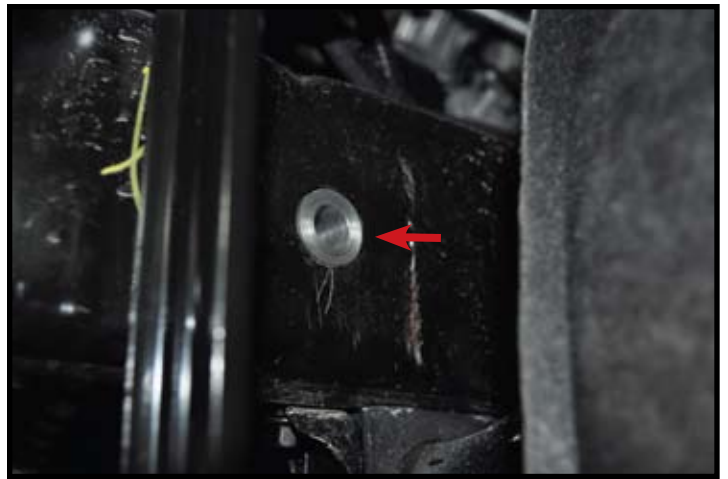
4. On each side remove one screw attaching fascia support to metal bracket. **NOTE:** Passenger side shown.



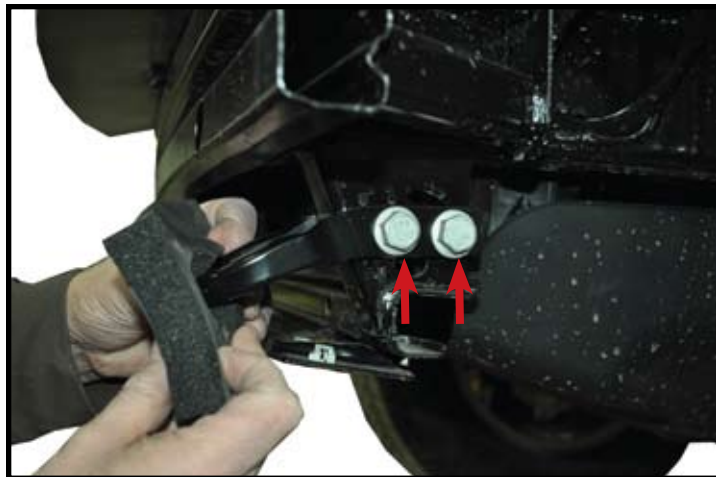
5. On each side remove two T15 screws attaching fascia to metal bracket and one screw attaching plastic air deflector to metal cross brace. **NOTE:** Passenger side shown.



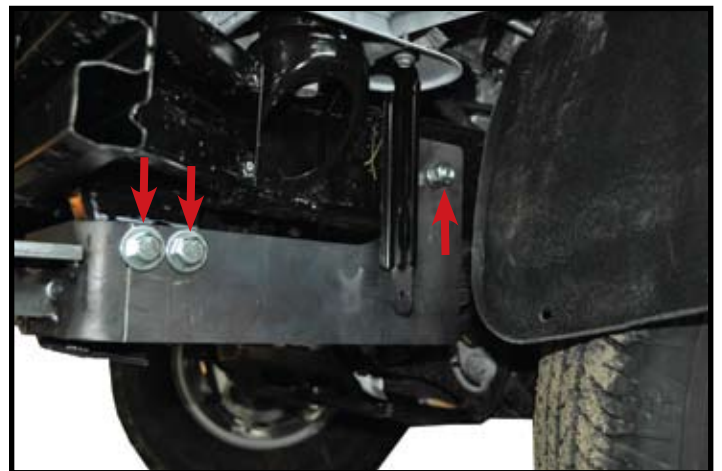
6. Remove six T15 screws from top of fascia. Pull fascia out and forward and remove the fascia. Unplug fog lights if equipped. **NOTE:** This step may have been previously done in step 1.



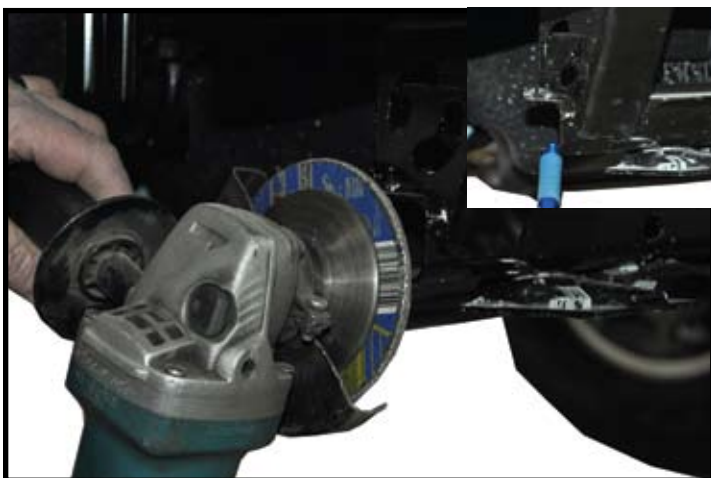
9. Place frame bushing in frame making sure it is through both walls of the frame as shown in picture.



7. IF EQUIPPED WITH TOW HOOKS Remove foam inserts from each towhook. Remove 2 bolts from each tow hook and remove towhooks.



10. With an assistant install baseplates onto vehicle using bolts, lock washers, flat washers, bushings and nuts in the direction as shown on front cover. Keep all bolts loose. Use blue **LOCTITE**® on all bolts.



8. If cross brace below tow hook mount (shown in insert picture) sticks out past tow hook mount more than 1/4" grind down so cross brace sticks past tow hook mount only 1/4". **NOTE:** Touch up ground area with paint to prohibit rusting.



11. Have an assistant press up on the pull ears of the baseplate and tighten all bolts starting with those mounted in towhook location and then the rest. Tighten all bolts according to chart on front page.



13. Replace fascia, factory hardware and plug in fog lights if equipped in reverse order.



12. In towhooks were not equipped look on back of fascia and cut on the raised line where towhook hole is and cut on that line. Now cut down each side about 1/8" below bend in plastic and cut straight across connecting prior cuts as shown by lines in picture. Repeat on other side (driver side shown).

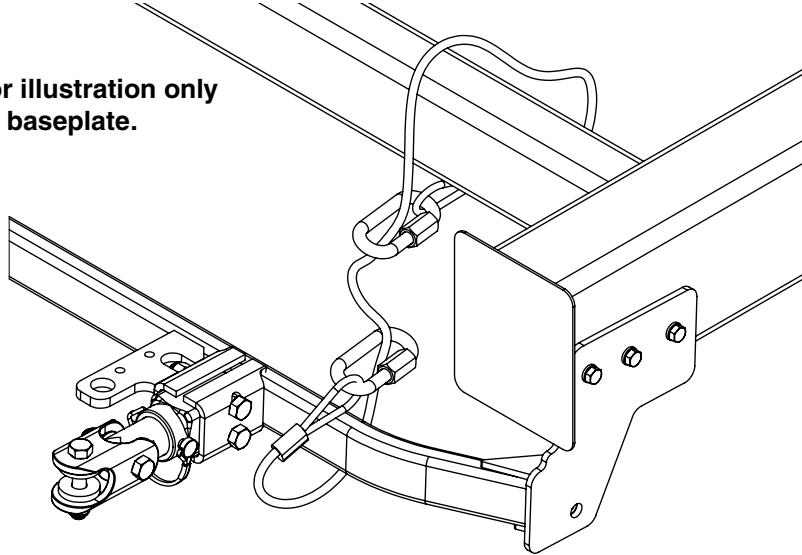
14. Plug mount (item #15) may be installed if desired in convenience holes on either chain anchor or as desired. **NOTE:** Excess material may be trimmed from bracket.

INSTRUCTIONS FOR TOWED VEHICLE BASEPLATE SAFETY CABLES & PARTS BREAKDOWN

Example #1

Wrap the safety cable around the baseplate crossmember and attach with one quick-link. Attach the other end of the safety cable to the vehicles frame rail or crossmember of the vehicles frame using another quicklink. **See illustration below.** **NOTE:** when routing cable, make sure cable does not touch or rub against wires, brake hoses, brake lines or axle shafts. Do this on each side of the baseplate.

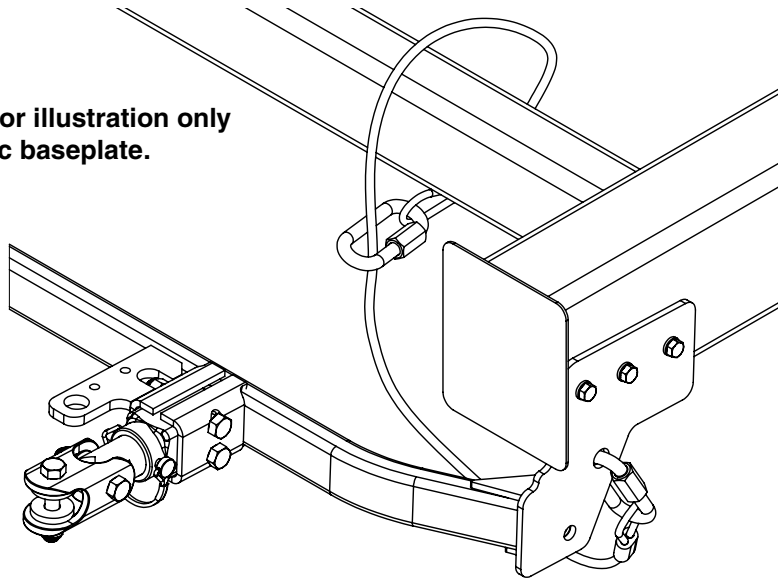
Baseplate pictured is for illustration only and is not your specific baseplate.



Example #2

Some baseplate models have a hole to mount the quicklink and cable. Example: some baseplates may not have a crossmember from one side to the other, thus you have a quicklink mounting hole. **See illustration below:** this shows the use of just one quick-link. Other installs may require 2 quicklinks depending on baseplate model. **NOTE:** when routing cable, make sure cable does not touch or rub against wires, brake hoses, brake lines or axle shafts. Do this on each side of the baseplate.

Baseplate pictured is for illustration only and is not your specific baseplate.



REF. NO.	PART NO.	QTY.	DESCRIPTION
-	6155	-	Safety Cable Kit
1.	-	2	36" Nylon coated safety cables rated @ 14,000 lbs. per pair
2.	-	4	1/2" Quicklinks rated @ 10,000 lbs. each

Installation to Tow Bar

Demco Commander Tow Bar



Hardware Used: two 3/8" bolts, four 3/8" steel washers, four 3/8" poly washers, four 3/8" poly bushing and two 3/8" lock nuts.

1. Remove existing clevis from end of tow bar shaft.
2. Install poly bushing from inside clevis using a pliers to squeeze bushing into hole. You can use a rag or cardboard between pliers to protect bushing and clevis from damage. If bushing is hard to start in hole, hole may be cleaned out with 1/2" drill bit.
3. The 3/8" poly washers go in between the tow bar shaft and poly bushings.
4. The 3/8" steel washers go on the outside of clevis fastened by the 3/8" bolt and nut.
5. Tighten nut snug so you can still rotate clevis on tow bar shaft.

Demco Excalibar II Tow Bar



Hardware Used: two 1/2" bolts, four 1/2" narrow rim poly washers and two 1/2" lock nuts

1. Remove existing clevis from end of tow bar shaft.
2. Install the 1/2" narrow rim poly washers between the tow bar shaft and clevis.
3. Tighten nut snug so you can still rotate clevis on tow bar shaft.

Demco Dominator Tow Bar



Hardware Used: two 1/2" bolts, four 1/2" wide rim poly washers and two 1/2" lock nuts

1. Remove existing clevis from end of tow bar shaft.
2. Install the 1/2" wide rim poly washers between the tow bar shaft and clevis.
3. Tighten nut snug so you can still rotate clevis on tow bar shaft.

Demco Excalibar or Aluminator Tow Bar



Hardware Used: two 1/2" bolts and two 1/2" lock nuts

1. Remove existing clevis from end of tow bar shaft.
2. Install tow bar shaft into clevis.
3. Tighten nut snug so you can still rotate clevis on tow bar shaft.

Roadmaster Tow Bars



Hardware Used: two 1/2" bolts and two 1/2" lock nuts or two 1/2" bolts, four 1/2" - 1/4" thick washers and four 1/2" wide rim poly washers and two 1/2" lock nuts

1. Remove existing clevis from end of tow bar shaft.
2. If you tow bar came with a black bushing or red ends, install end into clevis and fasten using the provided 1/2" bolts and tighten nut snug so you can still rotate clevis on tow bar shaft.
3. If you have a Sterling towbar without the black bushing, install clevis using the 1/4" thick washers and 1/2" wide rim poly washers as shown in bottom picture.

Hooking Up Tow Bar to Baseplate



1. Insert pull tab into baseplate pull socket with the flat spot and locking hole facing up. Push pull tab into socket until it stops.



2. Rotate assembly 90° until lock pin holes line up. (Tab to clevis bolt will be horizontal while tow bar to clevis bolt will be vertical).

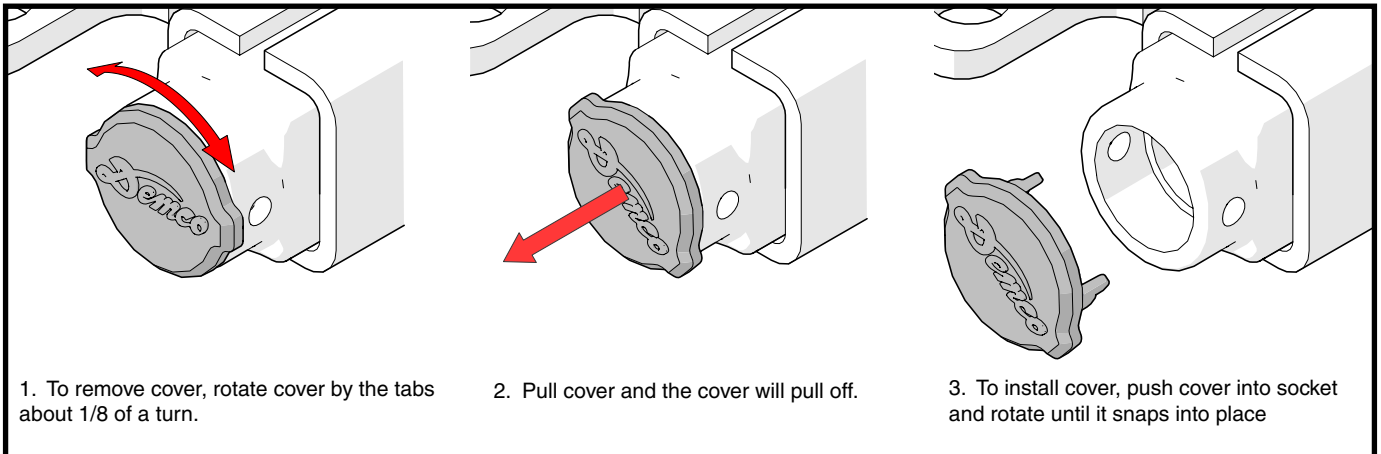


3. Insert locking pin into cross hole. If pin does not install, pull tab may not be installed correctly or try rotating tab 180° and try again. Hook up safety cables and other equipment required for towing your vehicle

Unhooking Tow Bar from Baseplate

1. Release the pressure from tow bar as stated in your tow bar manual.
2. Reverse the hooking up process.

Plug Cover Instructions



Demco