

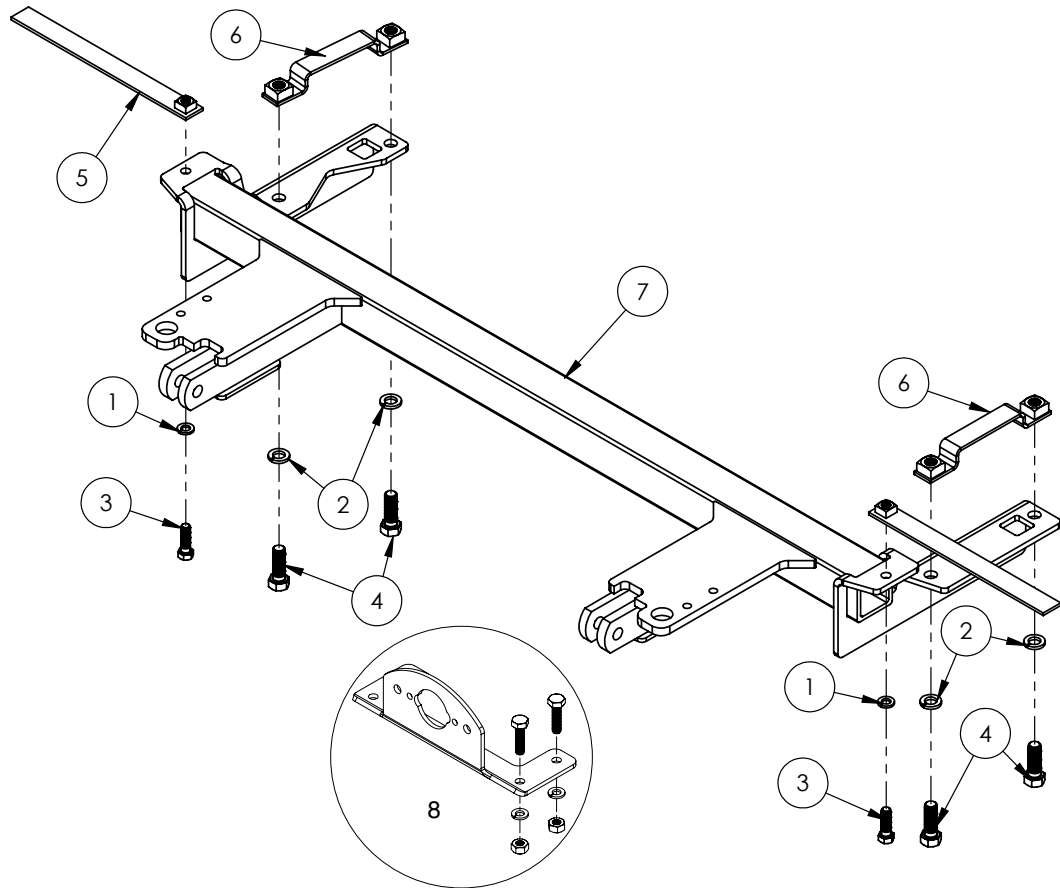


# BASEPLATE

Saturn ION Sedan



Pin Height - 14-1/4" Center - 24"



### 9518151 PARTS LIST

| REF. NO. | PART NO. | QTY. | DESCRIPTION                 |
|----------|----------|------|-----------------------------|
| 1.       | 00060    | 2    | 3/8" Lock Washer            |
| 2.       | 00084    | 4    | 1/2" Lock Washer            |
| 3.       | 00523    | 2    | 3/8" x 1-1/4" Bolt Gr.5     |
| 4.       | 01254    | 4    | 1/2" x 1-1/2" Bolt Gr.5     |
| 5.       | 10906-76 | 2    | Straight Nut Strip          |
| 6.       | 11362-76 | 2    | Bent Nut Strip              |
| 7.       | 13101-76 | 1    | Base Plate                  |
| 8.       | 5937     | 1    | Plug Mount Kit              |
| 9.       | 12329    | 1    | Loctite( <i>not shown</i> ) |

Please order replacement parts by PART NO. and DESCRIPTION.

ASSEMBLY  
OPERATION  
REPLACEMENT PARTS

**READ** complete manual CAREFULLY  
BEFORE attempting operation.

Doing Our Best to Provide You the Best

**WARNING: FAILURE TO FOLLOW THESE INSTRUCTIONS CAN RESULT IN LOSS OF TOWING VEHICLE CONTROL, SEPARATION OF THE TOW BAR FROM THE TOWING VEHICLE, SEPARATION OF THE TOWED VEHICLE FROM THE TOW BAR, CAUSING SEVERE PERSONAL INJURY, DEATH, OR PROPERTY DAMAGE.**

## **CAUTION**

Safety is of utmost importance at all times. There are several items that must be checked each time before using and while using a tow bar.

Before allowing anyone to hook up or operate a tow bar, be sure they have read and understand the proper operating procedure.

**DO NOT** use worn or damaged cables and/or pins.

Be sure the **SAFETY CABLES** are hooked, chassis to chassis, to both the towing and towed vehicles using the crisscross method.

Check clearance between vehicles in a turning situation.

Check base plate mounting bolts for tightness and frame for metal fatigue.

Do not load the towed vehicle with anything as you may exceed the towing capacity of the tow bar.

Keep fingers away from pivot points to prevent personal injury.

Be sure the steering components of the towed vehicle are properly aligned.


Demco baseplates are designed for use on factory vehicle suspension setups. Demco baseplates are not recommended for use on modified suspensions lowered or raised. Towing vehicle must be larger and at least 500 lbs. heavier than the towed vehicle and tow bar combined.

**NOTE:** This unit can be backed up in moderate increments. Any severe backwards cornering could result in damage to the Tow Bar and/or towed vehicle chassis.

**For automatic transmissions:** Consult your vehicle owners manual for towing suitability with the drive shaft connected. Otherwise, the towed vehicle will have to be equipped with a transmission pump or drive shaft disconnect.

Check to make sure that all lights are in proper working order.

**The information on towability of vehicles is reprinted with permission of MotorHome® Magazine,** and is believed to be reliable. However, **Demco does not** warrant the information to be correct. Always consult your towed vehicle owner's manual and follow towing instructions. Each year, **MotorHome® Magazine,** compiles a list of vehicles that can be towed four-down behind a motorhome with no modifications required.

 **Caution: MotorHome® Magazine** left out any vehicles that have towing speed limits slower than 55 m.p.h., or distance limits of less than 200 miles. At a minimum, these vehicles require significant modification, such as the use of an aftermarket product, to make them towable. The availability of a **Demco Tow Bar Base Plate does not** imply that these vehicles can be modified or that there is an aftermarket product available. Refer to your vehicle owner's manual or consult your dealer to determine whether your vehicle can be modified to make it towable. Failure to observe this precaution could result in property damage or personal injury.

## **IMPORTANT INSTALLATION ITEMS**

DEMCO products and accessories are intended to be installed by professional installers with experience, proper equipment and the ability to do modification work. Installers with these qualifications can be found in RV and Automotive Service Centers.

If the car to be towed has been in an accident, the chassis may be damaged in an area where the Base Plate attaches. It may no longer be suitable for towing. Extreme caution and careful examination are required in such a situation. It is also likely, even from a minor accident, that the hole alignment will be more difficult due to hole alignment problems.

Many DEMCO Base Plates are designed to use existing holes and hardware to mount the Base Plate to the towed vehicle. Even though the bolt is there, however, do not assume it is adequate for mounting the Base Plate. Manufacturers make many changes in hardware both within and between model years. Be sure the bolt is long enough to protrude past the nut a distance no less than 1/2 the diameter of the bolt, after the Base Plate is mounted. The threads should be in good condition. **We require that “LOCTITE® Blue” be used on all bolts.** If a new bolt is required, be sure it is SAE Grade 5 or Metric 8.8.

**NOTE: The dimensional variations between otherwise identical vehicles can be considerable. Some minor modifications may have to be made to ensure a proper fit.**

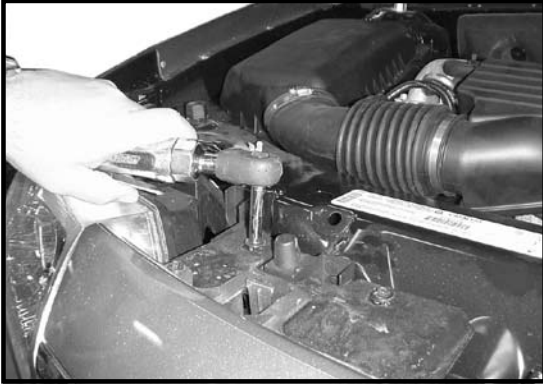
### **BOLT TORQUE SPECIFICATIONS**

#### **STANDARD BOLTS:**

#### **METRIC BOLTS:**

| <b>Size</b> | <b>Grade</b> | <b>Torque</b> | <b>Size</b> | <b>Grade</b> | <b>Torque</b> |
|-------------|--------------|---------------|-------------|--------------|---------------|
| 5/16"       | 5            | 18 ft/lbs     | 8mm         | 8            | 23 ft/lbs     |
| 3/8"        | 5            | 30 ft/lbs     | 10mm        | 8            | 45 ft/lbs     |
| 7/16"       | 5            | 50 ft/lbs     | 12mm        | 8            | 78 ft/lbs     |
| 1/2"        | 5            | 75 ft/lbs     | 14mm        | 8            | 125 ft/lbs    |

## INSTALLATION INSTRUCTIONS



1. Open hood and remove four screws on top of grill area.



2. Remove one screw from each wheel well.



3. Remove two plastic push fasteners from wheel well to fascia on each side.



4. Remove three plastic push fasteners from bottom side of fascia to wheel well extension, on both sides.



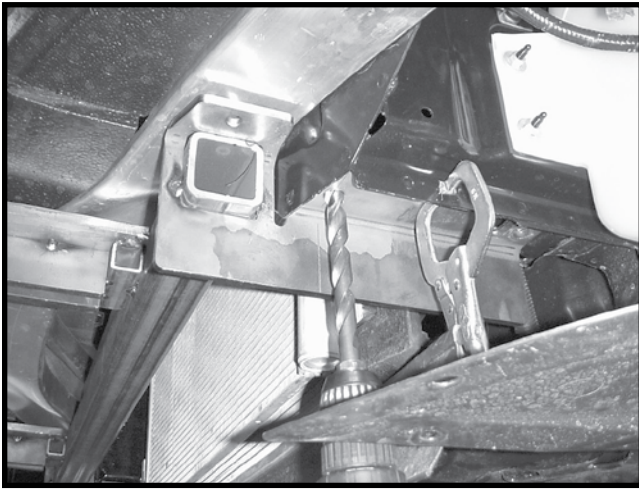
5. Pull fascia out by wheel well on each side and lift up behind grill and carefully slide fascia off.



6. Remove plastic filler panels from each side. One screw and four plastic push fasteners on driver's side, and one screw and seven push fasteners on passenger's side and remove one bolt from air box.



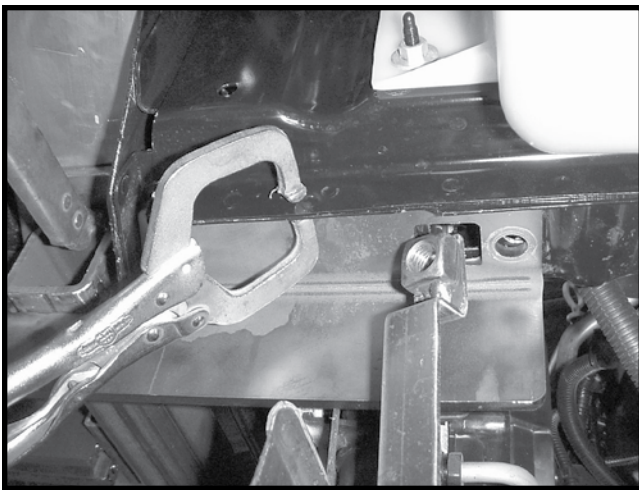
7. Cut passenger's side plastic filler piece as shown in picture.



8. Slide base plate up into position and center square hole in frame with square hole in base plate and clamp into place. Drill two 1/2" holes in frame on each side, using base plate as template.



11. Mark where the pull ears will pass through fascia and cut out plastic bar in fascia as shown in picture.

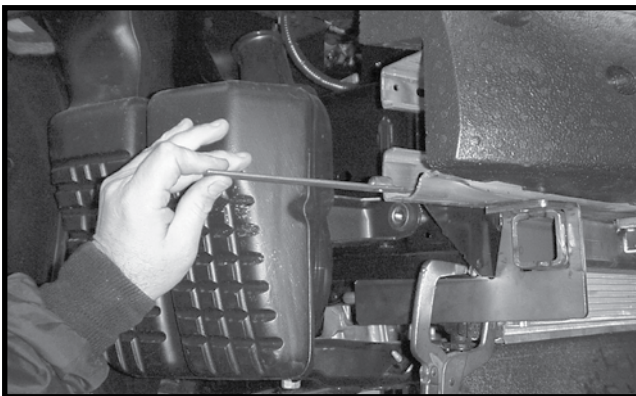


9. Insert bent nut strip through square hole and line up nuts with holes. Fasten with two 1/2" x 1-1/2" bolts and 1/2" lock washers, do this to both sides. **NOTE:** Use Blue **LOCTITE** on all bolts and torque bolts according to the chart on front page.



12. Reinstall plastic filler panels, fascia and all hardware.

13. Plug mount (item #8) may be installed if desired in convenience holes on either chain anchor or as desired. **NOTE:** Excess material may be trimmed from bracket.



10. Drill 3/8" holes up into bumper using base plate as template. Slide nut strip into side of bumper and line up with drilled hole. Fasten with 3/8" x 1-1/4" bolts and 3/8" lock washer, on both sides.

*Demco*