

Demco

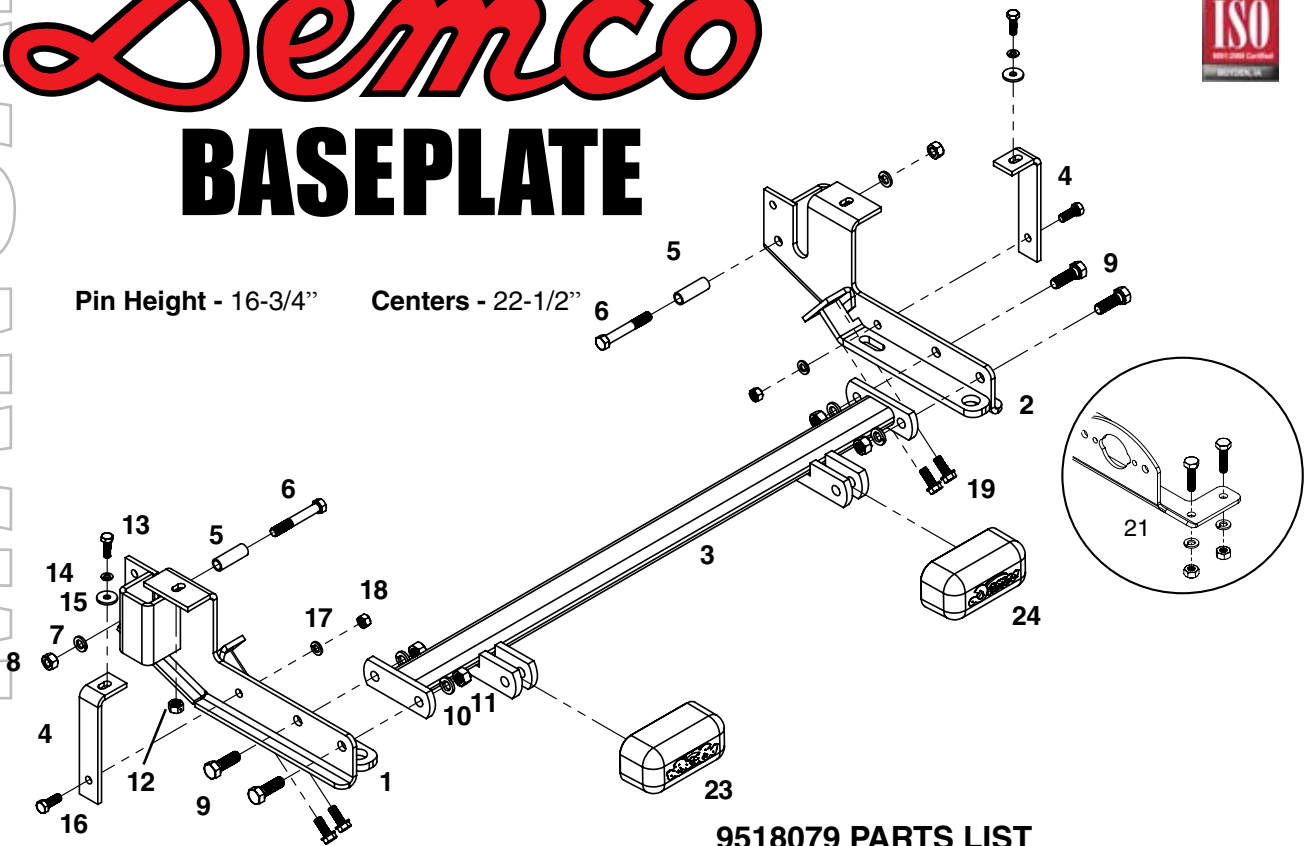
BASEPLATE

Chevy Tracker



Pin Height - 16-3/4"

Centers - 22-1/2"



9518079 PARTS LIST

REF. NO.	PART NO.	QTY.	DESCRIPTION
1.	09839-76	1	Right Frame Mount
2.	09838-76	1	Left Frame Mount
3.	13115-76	1	Crossmember
4.	09840-76	2	L Brace
5.	09816-95	2	Frame Bushing
6.	05104	2	7/16"-14 UNC x 3" Hex Hd. Bolt Gr.5
7.	00078	2	7/16" Lockwasher
8.	00079	2	7/16"-14 UNC Hex Nut
9.	01254	4	1/2"-13 UNC x 1-1/2" Hex Head Bolt Gr.5
10.	00084	4	1/2" Lockwasher
11.	00083	4	1/2" -13 UNC Hex Nut
12.	09795	2	10mm x 1.25 Punch Lock Nut
13.	07479	2	8mm x 1.25 x 25mm Hex Hd. Bolt
14.	07286	2	8mm Lockwasher
15.	09228	2	8mm Fender Washer
16.	00907	2	3/8"-16 UNC x 1" Hex Head Bolt Gr.5
17.	00060	2	3/8" Lockwasher
18.	00061	2	3/8"-16 UNC Hex Nut
19.	07594	6	3/8" Self-Threading Bolts
20.	09817-76	2	Crossmember Shims (not shown)
21.	5937	1	Plug Mount Kit
22.	12329	1	Loctite(not shown)
23.	12979	1	Pull Ear Cover "A"
24.	12980	1	Pull Ear Cover "B"

Please order replacement parts by PART NO. and DESCRIPTION.

ASSEMBLY
OPERATION
REPLACEMENT PARTS

READ complete manual CAREFULLY
BEFORE attempting operation.

Doing Our Best to Provide You the Best

WARNING: FAILURE TO FOLLOW THESE INSTRUCTIONS CAN RESULT IN LOSS OF TOWING VEHICLE CONTROL, SEPARATION OF THE TOW BAR FROM THE TOWING VEHICLE, SEPARATION OF THE TOWED VEHICLE FROM THE TOW BAR, CAUSING SEVERE PERSONAL INJURY, DEATH, OR PROPERTY DAMAGE.

CAUTION

Safety is of utmost importance at all times. There are several items that must be checked each time before using and while using a tow bar.

Before allowing anyone to hook up or operate a tow bar, be sure they have read and understand the proper operating procedure.

DO NOT use worn or damaged cables and/or pins.

Be sure the **SAFETY CABLES** are hooked, chassis to chassis, to both the towing and towed vehicles using the crisscross method.

Check clearance between vehicles in a turning situation.

Check base plate mounting bolts for tightness and frame for metal fatigue.

Do not load the towed vehicle with anything as you may exceed the towing capacity of the tow bar.

Keep fingers away from pivot points to prevent personal injury.

Be sure the steering components of the towed vehicle are properly aligned.


Demco baseplates are designed for use on factory vehicle suspension setups. Demco baseplates are not recommended for use on modified suspensions lowered or raised. Towing vehicle must be larger and at least 500 lbs. heavier than the towed vehicle and tow bar combined.

NOTE: This unit can be backed up in moderate increments. Any severe backwards cornering could result in damage to the Tow Bar and/or towed vehicle chassis.

For automatic transmissions: Consult your vehicle owners manual for towing suitability with the drive shaft connected. Otherwise, the towed vehicle will have to be equipped with a transmission pump or drive shaft disconnect.

Check to make sure that all lights are in proper working order.

The information on towability of vehicles is reprinted with permission of MotorHome® Magazine, and is believed to be reliable. However, Demco does not warrant the information to be correct. Always consult your towed vehicle owner's manual and follow towing instructions. Each year, MotorHome® Magazine, compiles a list of vehicles that can be towed four-down behind a motorhome with no modifications required.

 **Caution: MotorHome® Magazine** left out any vehicles that have towing speed limits slower than 55 m.p.h., or distance limits of less than 200 miles. At a minimum, these vehicles require significant modification, such as the use of an aftermarket product, to make them towable. The availability of a **Demco Tow Bar Base Plate** does **not** imply that these vehicles can be modified or that there is an aftermarket product available. Refer to your vehicle owner's manual or consult your dealer to determine whether your vehicle can be modified to make it towable. Failure to observe this precaution could result in property damage or personal injury.

IMPORTANT INSTALLATION ITEMS

DEMCO products and accessories are intended to be installed by professional installers with experience, proper equipment and the ability to do modification work. Installers with these qualifications can be found in RV and Automotive Service Centers.

If the car to be towed has been in an accident, the chassis may be damaged in an area where the Base Plate attaches. It may no longer be suitable for towing. Extreme caution and careful examination are required in such a situation. It is also likely, even from a minor accident, that the hole alignment will be more difficult due to hole alignment problems.

Many DEMCO Base Plates are designed to use existing holes and hardware to mount the Base Plate to the towed vehicle. Even though the bolt is there, however, do not assume it is adequate for mounting the Base Plate. Manufacturers make many changes in hardware both within and between model years. Be sure the bolt is long enough to protrude past the nut a distance no less than 1/2 the diameter of the bolt, after the Base Plate is mounted. The threads should be in good condition. **We require that "LOCTITE® Blue" be used on all bolts.** If a new bolt is required, be sure it is SAE Grade 5 or Metric 8.8.

NOTE: The dimensional variations between otherwise identical vehicles can be considerable. Some minor modifications may have to be made to ensure a proper fit.

BOLT TORQUE SPECIFICATIONS

STANDARD BOLTS:			METRIC BOLTS:		
Size	Grade	Torque	Size	Grade	Torque

5/16"	5	18 ft/lbs	8mm	8	23 ft/lbs
3/8"	5	30 ft/lbs	10mm	8	45 ft/lbs
7/16"	5	50 ft/lbs	12mm	8	78 ft/lbs
1/2"	5	75 ft/lbs	14mm	8	125 ft/lbs

INSTALLATION INSTRUCTIONS



1. Remove grill by opening hood and removing plastic push fasteners from top of grill.



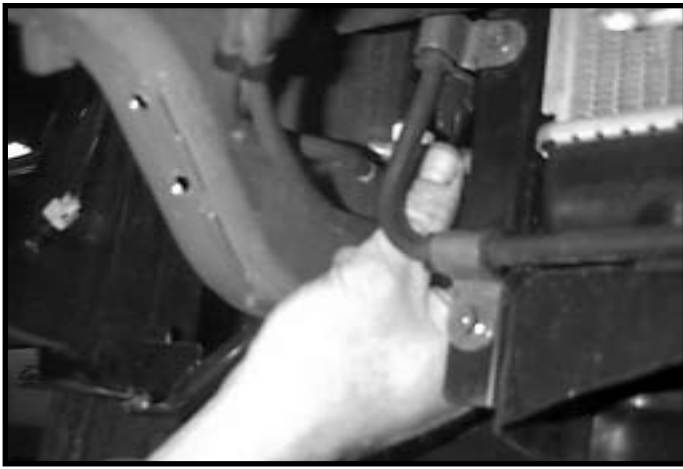
3. Remove bumper cover by removing plastic push fasteners from top side, three bolts from bottom side. Remove one plastic push fastener from inner fender to bumper cover, and one bolt from inner fender to bottom of front fender, on each side.



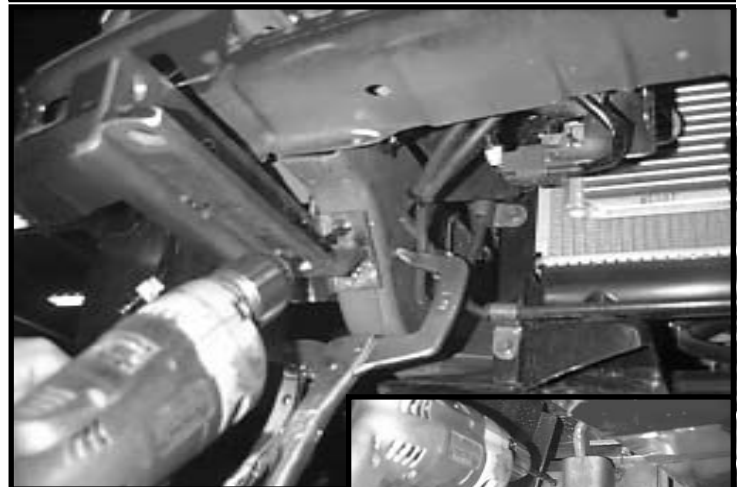
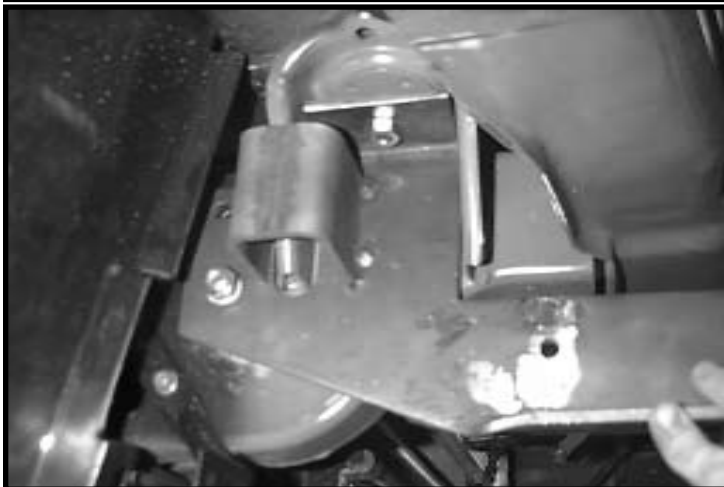
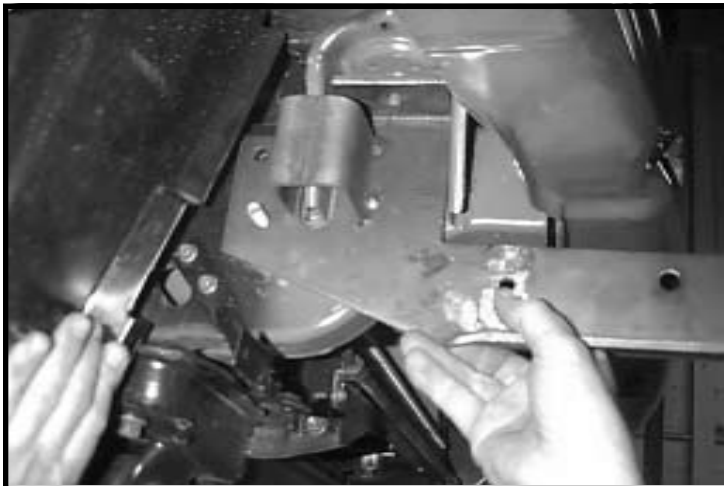
2. Carefully pull grill straight out by headlight area, and set aside.



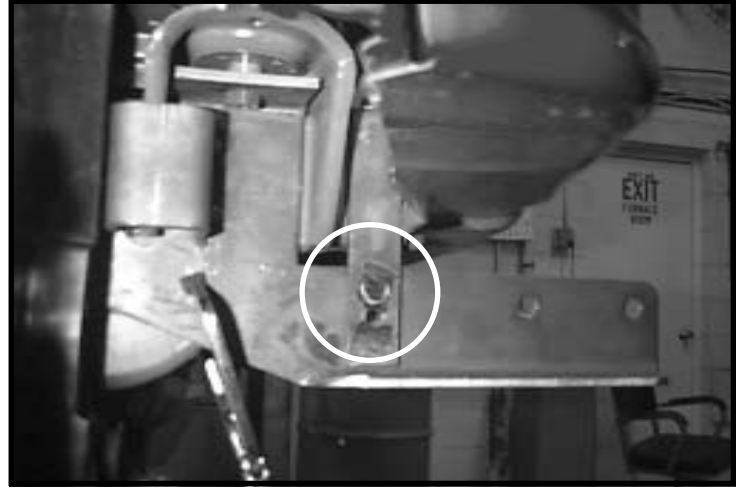
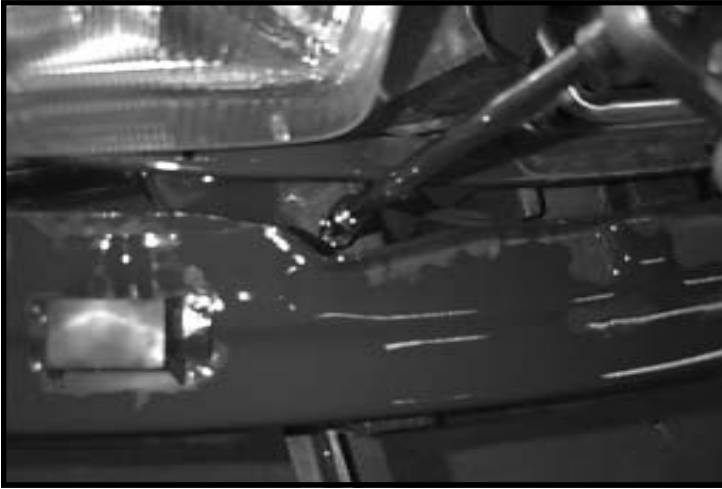
4. Unplug side marker lights, and pull bumper cover off.



5. Remove one plastic push from inner fender to brace, which is bolted to frame, on each side. (no picture)
6. From inside of frame out insert 7/16" x 3" bolt thru frame and slip bushing through outside of frame over 7/16" bolt. Do this on each side.



7. Install right and left frame mounts. Put proper side up and push 7/16" bolt through hole and start 7/16" lockwasher, and hex nut. Start 10mm x 1.25 punch lock nut over factory stud. Push mount up so angle is flat on front of frame, and clamp with C-clamp. Snug previously mentioned fasteners. Drill 5/16" holes through frame using mount as a template (three on each mount).



8. Remove top bumper bolt on each side and install brace with 8mm x 1.25 x 25mm bolt, 8mm lockwasher, and 8mm fender washer. Secure bottom of brace to frame mount using 3/8" x 1" bolt (circled above), 3/8" lockwasher, 3/8" flatwasher, and 3/8" hex nut. **We require that "LOCTITE®Blue" be used on all bolts.**



9. Install self-threading bolts at this time, and tighten all previously mentioned hardware to proper torque specifications. Remove C-clamps **We require that "LOCTITE®Blue" be used on all bolts.**



10. Reinstall bumper cover, grill, and inner fenders.

11. Install crossmember with 1/2" x 1-1/2" bolts, 1/2" lockwashers, and 1/2" hex nuts. (shims are included for crossmember if needed)

12. Plug mount (item #21) may be installed if desired in convenience holes on either chain anchor or as desired. **NOTE:** Excess material may be trimmed from bracket.