

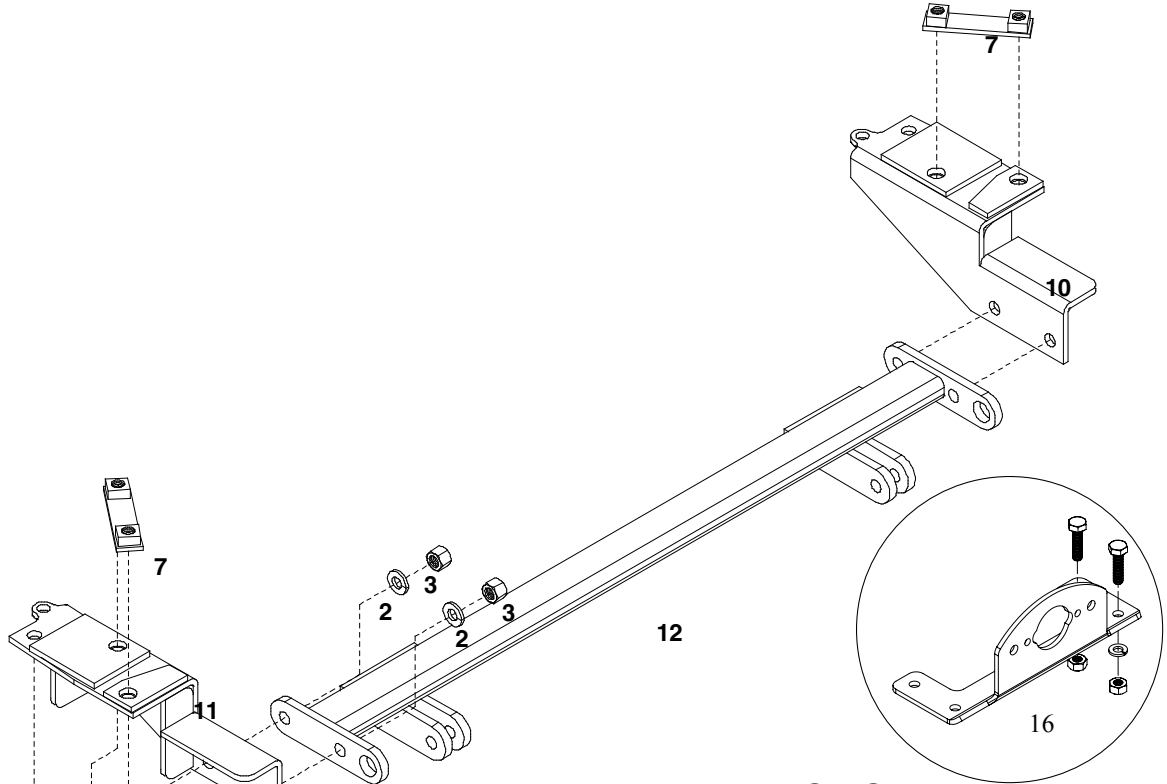
Demco

BASEPLATE

Jeep Grand Cherokee
(all models)



Pin Height - 15-1/2" Center - 24"



9518072 PARTS LIST

REF. NO.	PART NO.	QTY.	DESCRIPTION
1.	01254	4	1/2"-13UNC x 1-1/2" Hex Hd. Bolt Gr.5
2.	00084	4	1/2" Lockwasher
3.	00083	4	1/2"-13UNC Hex Nut
4.	04050	4	7/16"-14UNC x 1-1/2" Hex Bolt Gr.5
5.	00205	4	7/16" Flatwasher
6.	00078	4	7/16" Lockwasher
7.	09549-95	2	Nut Strip
8.	07291	4	10mm-1.50 x 35mm Hex Hd. Bolt Gr8.8
9.	07283	4	10mm Flatwasher
10.	09548-76	1	Left Mounting Bracket
11.	09547-76	1	Right Mounting Bracket
12.	13268-76	1	Cross Member
13.	09551	6	Plastic Pop Rivet (not shown)
14.	12979	1	Pull Ear Cover "A" (not shown)
15.	12980	1	Pull Ear Cover "B" (not shown)
16.	5937	1	Plug Mount Kit
17.	12329	1	Loctite (not shown)

Please order replacement parts by **PART NO.** and **DESCRIPTION.**

ASSEMBLY
OPERATION
REPLACEMENT PARTS

READ complete manual *CAREFULLY*
BEFORE attempting operation.

Doing Our Best to Provide You the Best

WARNING: FAILURE TO FOLLOW THESE INSTRUCTIONS CAN RESULT IN LOSS OF TOWING VEHICLE CONTROL, SEPARATION OF THE TOW BAR FROM THE TOWING VEHICLE, SEPARATION OF THE TOWED VEHICLE FROM THE TOW BAR, CAUSING SEVERE PERSONAL INJURY, DEATH, OR PROPERTY DAMAGE.

CAUTION

Safety is of utmost importance at all times. There are several items that must be checked each time before using and while using a tow bar.

Before allowing anyone to hook up or operate a tow bar, be sure they have read and understand the proper operating procedure.

DO NOT use worn or damaged cables and/or pins.

Be sure the **SAFETY CABLES** are hooked, chassis to chassis, to both the towing and towed vehicles using the crisscross method.

Check clearance between vehicles in a turning situation.

Check base plate mounting bolts for tightness and frame for metal fatigue.

Do not load the towed vehicle with anything as you may exceed the towing capacity of the tow bar.

Keep fingers away from pivot points to prevent personal injury.

Be sure the steering components of the towed vehicle are properly aligned.


Demco baseplates are designed for use on factory vehicle suspension setups. Demco baseplates are not recommended for use on modified suspensions lowered or raised. Towing vehicle must be larger and at least 500 lbs. heavier than the towed vehicle and tow bar combined.

NOTE: This unit can be backed up in moderate increments. Any severe backwards cornering could result in damage to the Tow Bar and/or towed vehicle chassis.

For automatic transmissions: Consult your vehicle owners manual for towing suitability with the drive shaft connected. Otherwise, the towed vehicle will have to be equipped with a transmission pump or drive shaft disconnect.

Check to make sure that all lights are in proper working order.

The information on towability of vehicles is reprinted with permission of MotorHome® Magazine, and is believed to be reliable. However, Demco does not warrant the information to be correct. Always consult your towed vehicle owner's manual and follow towing instructions. Each year, MotorHome® Magazine, compiles a list of vehicles that can be towed four-down behind a motorhome with no modifications required.

 **Caution: MotorHome® Magazine** left out any vehicles that have towing speed limits slower than 55 m.p.h., or distance limits of less than 200 miles. At a minimum, these vehicles require significant modification, such as the use of an aftermarket product, to make them towable. The availability of a **Demco Tow Bar Base Plate** does **not** imply that these vehicles can be modified or that there is an aftermarket product available. Refer to your vehicle owner's manual or consult your dealer to determine whether your vehicle can be modified to make it towable. Failure to observe this precaution could result in property damage or personal injury.

IMPORTANT INSTALLATION ITEMS

DEMCO products and accessories are intended to be installed by professional installers with experience, proper equipment and the ability to do modification work. Installers with these qualifications can be found in RV and Automotive Service Centers.

If the car to be towed has been in an accident, the chassis may be damaged in an area where the Base Plate attaches. It may no longer be suitable for towing. Extreme caution and careful examination are required in such a situation. It is also likely, even from a minor accident, that the hole alignment will be more difficult due to hole alignment problems.

Many DEMCO Base Plates are designed to use existing holes and hardware to mount the Base Plate to the towed vehicle. Even though the bolt is there, however, do not assume it is adequate for mounting the Base Plate. Manufacturers make many changes in hardware both within and between model years. Be sure the bolt is long enough to protrude past the nut a distance no less than 1/2 the diameter of the bolt, after the Base Plate is mounted. The threads should be in good condition. **We require that "LOCTITE® Blue" be used on all bolts.** If a new bolt is required, be sure it is SAE Grade 5 or Metric 8.8.

NOTE: The dimensional variations between otherwise identical vehicles can be considerable. Some minor modifications may have to be made to ensure a proper fit.

BOLT TORQUE SPECIFICATIONS **STANDARD BOLTS: METRIC BOLTS:**

Size	Grade	Torque	Size	Grade	Torque
5/16"	5	18 ft/lbs	8mm	8	23 ft/lbs
3/8"	5	30 ft/lbs	10mm	8	45 ft/lbs
7/16"	5	50 ft/lbs	12mm	8	78 ft/lbs
1/2"	5	75 ft/lbs	14mm	8	125 ft/lbs

INSTALLATION INSTRUCTIONS



1a. Models '99-03: Open hood and remove four screws from top of grill fascia, and three screws from front of grill fascia.



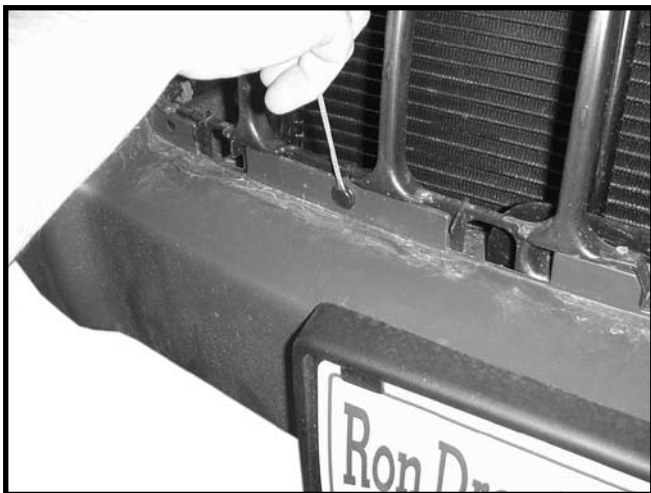
2b. Remove three plastic push rivets on models '99-03 and two plastic push rivets on models '04, (by cutting) on each side, from front of inner fender well to front fascia. (new rivets are included in kit.- see back page for installation.)



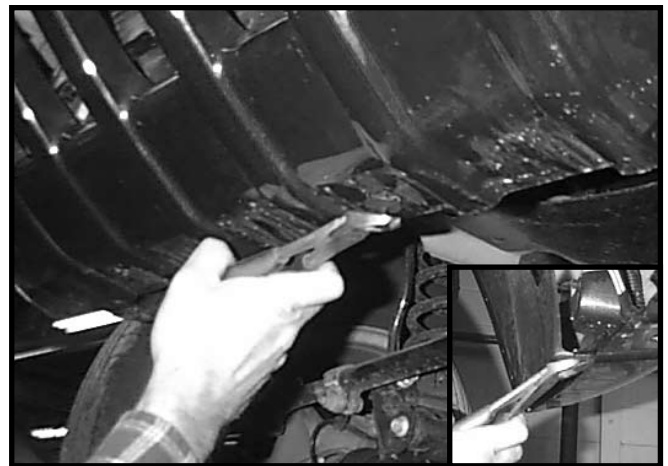
1b. Models '04: Open hood and release grill tabs on top of grill and hinge grill forward and remove.



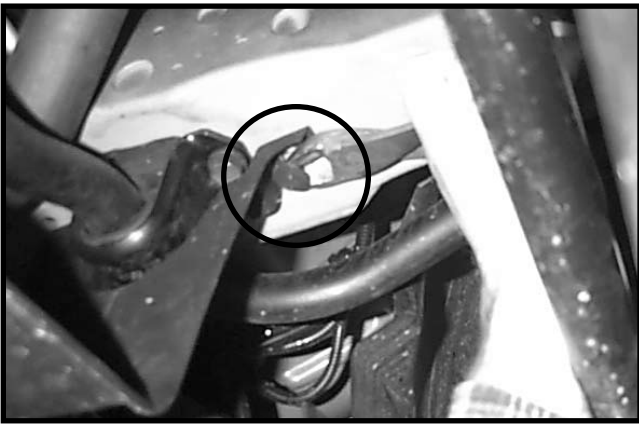
3. On each side, remove one bolt that holds fascia to fender.



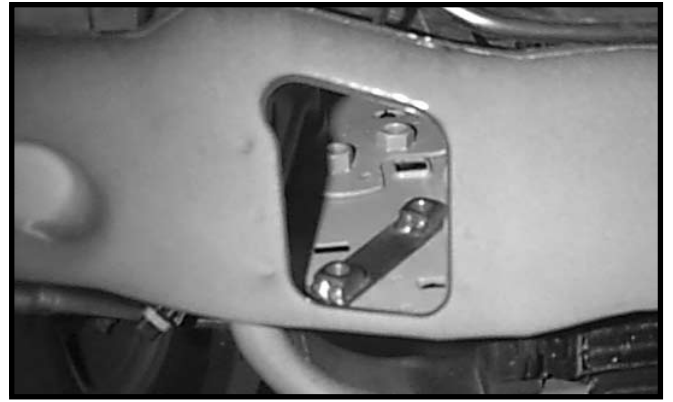
2a. Models '04: Remove four plastic push rivets from fascia to grill support.



4. On bottom side of fascia remove three plastic push rivets, and plastic push fasteners (carefully remove these, they will be reused) from inner fender well extension. Unplug fog lights if equipped, and carefully remove fascia.



5. Remove plastic box shield, or skid plate by removing plastic push fasteners, or bolts.



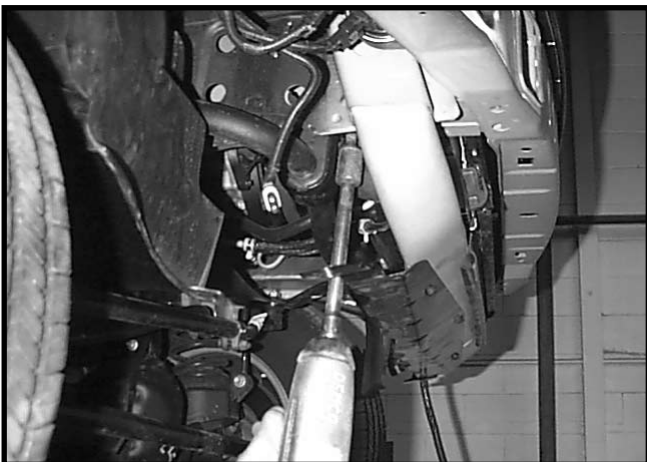
8. Slide nut strip into end of frame hole on each side. Align with holes as shown.



6. Remove tow hook bracket if equipped (three bolts). Brackets and tow hooks will not be reused.



9. Install right and left mounts by using stabilizer bolts, and 7/16" x 1-1/2" bolts, lockwashers, and flatwashers. Do not tighten.



7. On each side, remove front bolt from stabilizer mount.



10. Temporarily put crossmember between side mounts and pull them together. Tighten left and right mounts to proper torque specifications, and remove crossmember.
11. Put fascia back on carefully, and put a few fasteners in fascia to hold.
12. Install crossmember with four 1/2" x 1-1/2 bolts, lock-washers, and hex nuts. Tighten these bolts, and finish installing fascia.
13. Use four 10mm x 1.50 x 35mm bolts, and flatwashers to install plastic box shield.
14. Plug mount (item #16) may be installed if desired for wiring installation. Location of mount to be determined by the installer.

NOTE: Excess material may be trimmed from bracket.



PLASTIC RIVET INSTALLATION



1. Insert plastic rivet into existing holes.
2. Use pliers as leverage tool for vise grip.
3. Use vise grip on rivet, and roll on pliers as shown.