



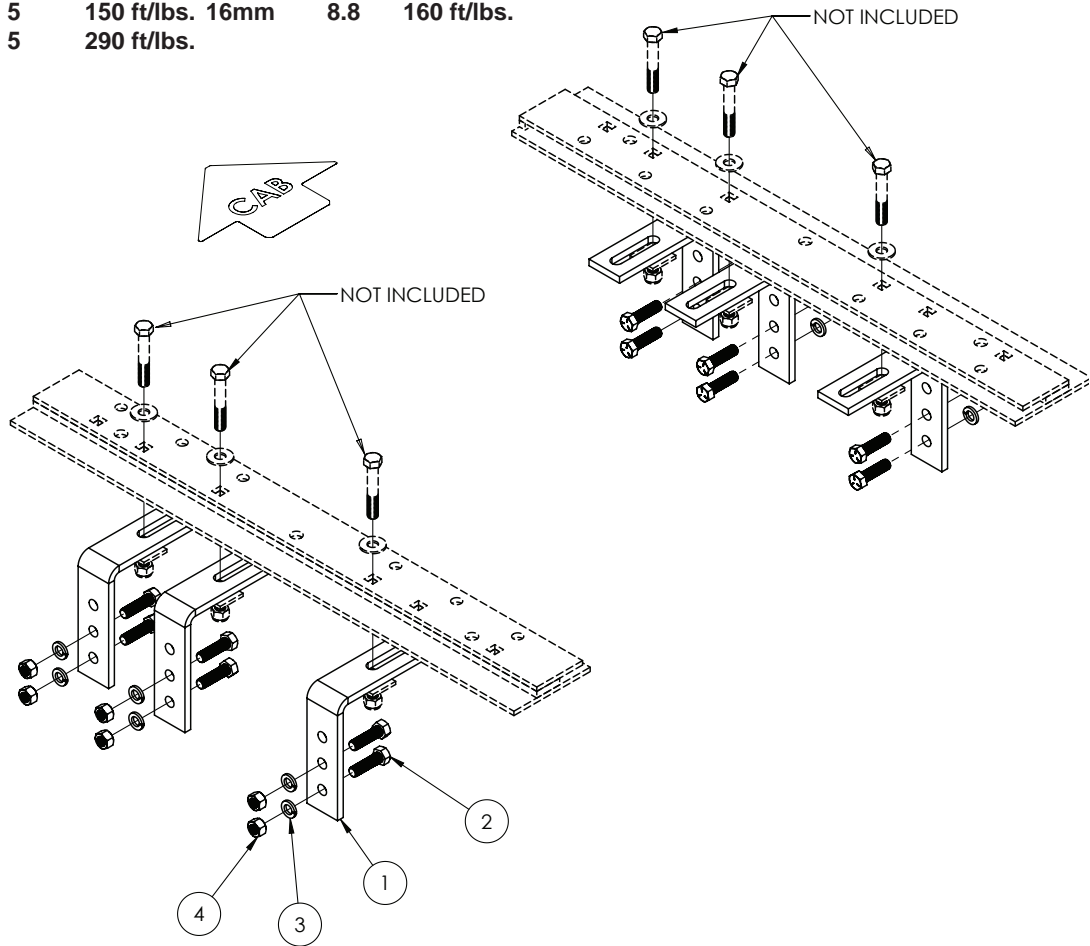
Ford
Chevrolet/GMC
Dodge



BOLT TORQUE SPECIFICATIONS

STANDARD BOLTS			METRIC BOLTS		
Size	Grade	Torque	Size	Grade	Torque
5/16"	5	18 ft/lbs.	8mm	8.8	23 ft/lbs.
3/8"	5	30 ft/lbs.	10mm	8.8	45 ft/lbs.
7/16"	5	50 ft/lbs.	12mm	8.8	78 ft/lbs.
1/2"	5	75 ft/lbs.	14mm	8.8	125 ft/lbs.
5/8"	5	150 ft/lbs.	16mm	8.8	160 ft/lbs.
3/4"	5	290 ft/lbs.			

FRAME BRACKET



8553004 PARTS LIST

REF. NO.	PART NO.	QTY.	DESCRIPTION
1.	14192-76	6	411D Frame Bracket
2.	14266	12	1/2"-NC x 1-3/4" Hex Bolt Knurled Gr.5
3.	00084	12	1/2" Lock Washer
4.	00083	12	1/2" Hex Nut
5.	14238	1	1/2" Fish Wire (not shown)

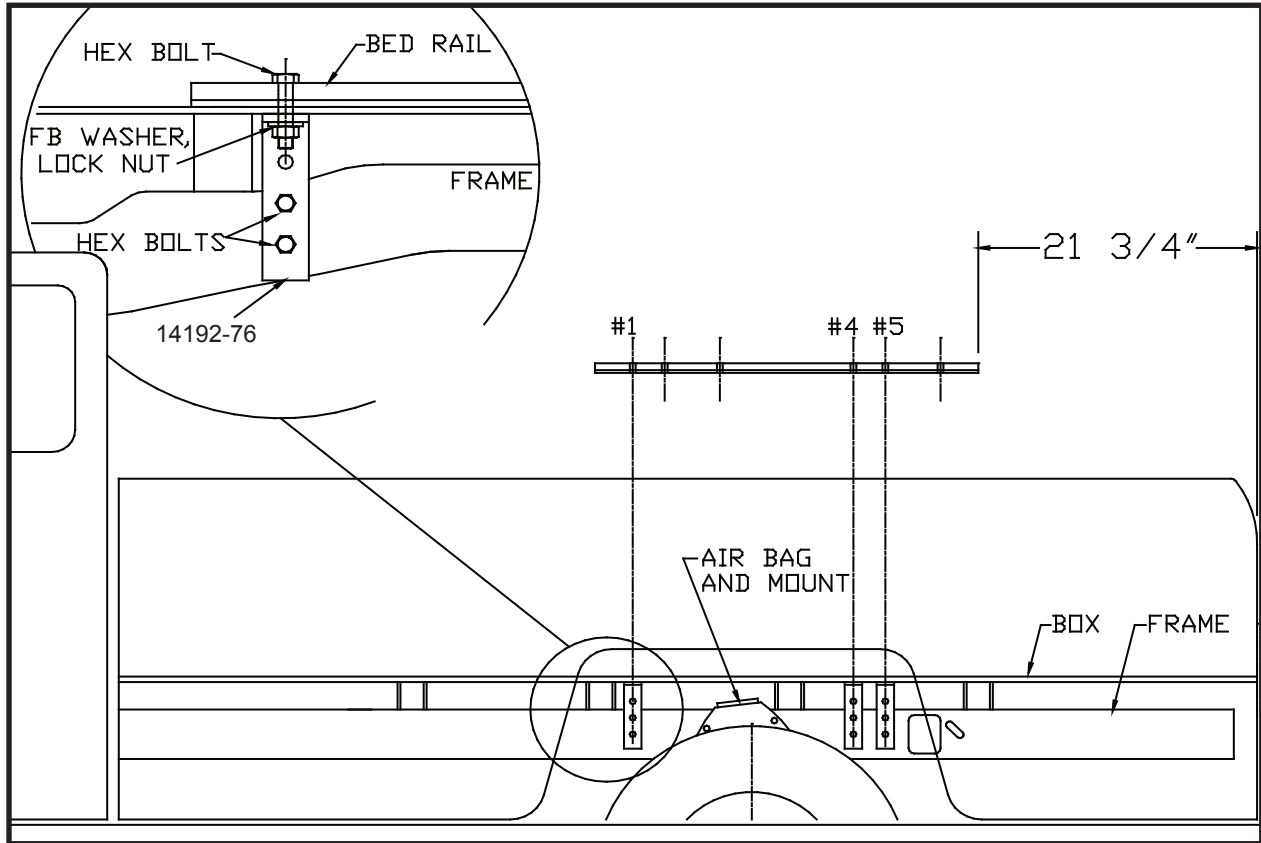
Please order replacement parts by **PART NO.** and **DESCRIPTION.**

ASSEMBLY
OPERATION
REPLACEMENT PARTS

READ *complete manual CAREFULLY*
BEFORE attempting operation.

Doing Our Best to Provide You the Best

FORD: 1997 F250 Light Duty (6 1/2' & 8' Box)

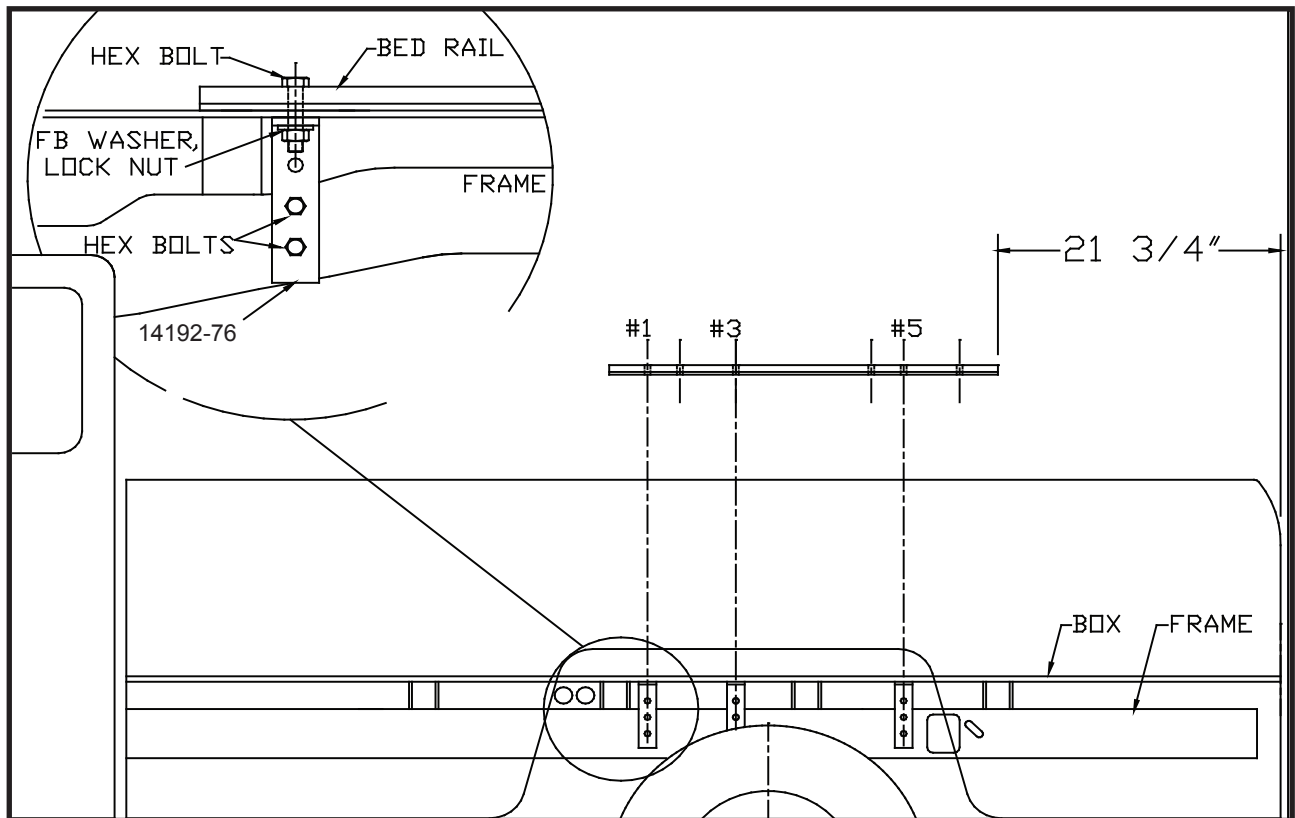


INSTALLATION

1. a. Completely assemble hitch. See GENERAL INSTRUCTIONS and SAFETY supplied.
b. Set hitch into back of truck, center it side to side.
c. Measure 21 3/4" from back edge of truck box to back edge of bed rail.
2. Check underneath box at bolt hole locations for any obstructions (frame members, etc.).
3. a. Drill two 17/32" holes thru HOLE #1, each bedrail.
b. Insert two 1/2" x 3" (04073) long hex bolts.
c. Drill thru HOLES #4 and #5, each bed rail. Insert four 1/2" x 3" hex bolts (04073).
4. a. Under box, place (14192-76) frame brackets onto hex bolts (six places).
b. Loosely install frame washer (14235-95), 1/2" flat washer (00085), and 1/2" Nylon lock nut (02178).
c. Press each bracket tight against frame member, tighten nuts snug against box.
5. a. Pilot drill* and drill 1/2" hole into truck frame, at two places thru holes in each frame bracket -- BE CAREFUL OF ELECTRIC OR FLUID LINES behind frame members.
b. Brackets will be bolted onto frame by drilling frame and fishing knurl bolt (14266) through frame with fish wire (14238) and attach with hex nut (00083) and lock washer (00084) on outside of bracket.
c. TIGHTEN ALL BOLTS ACCORDING TO CHART ON FRONT PAGE.

* To pilot drill: Use 1/2" drill bit or transfer punch to mark center. Drill thru with 1/4" drill.

FORD: 1997-2003 F150 (6 1/2' & 8' Box)
1998 F250 "Light Duty" (6 1/2' & 8' Box)

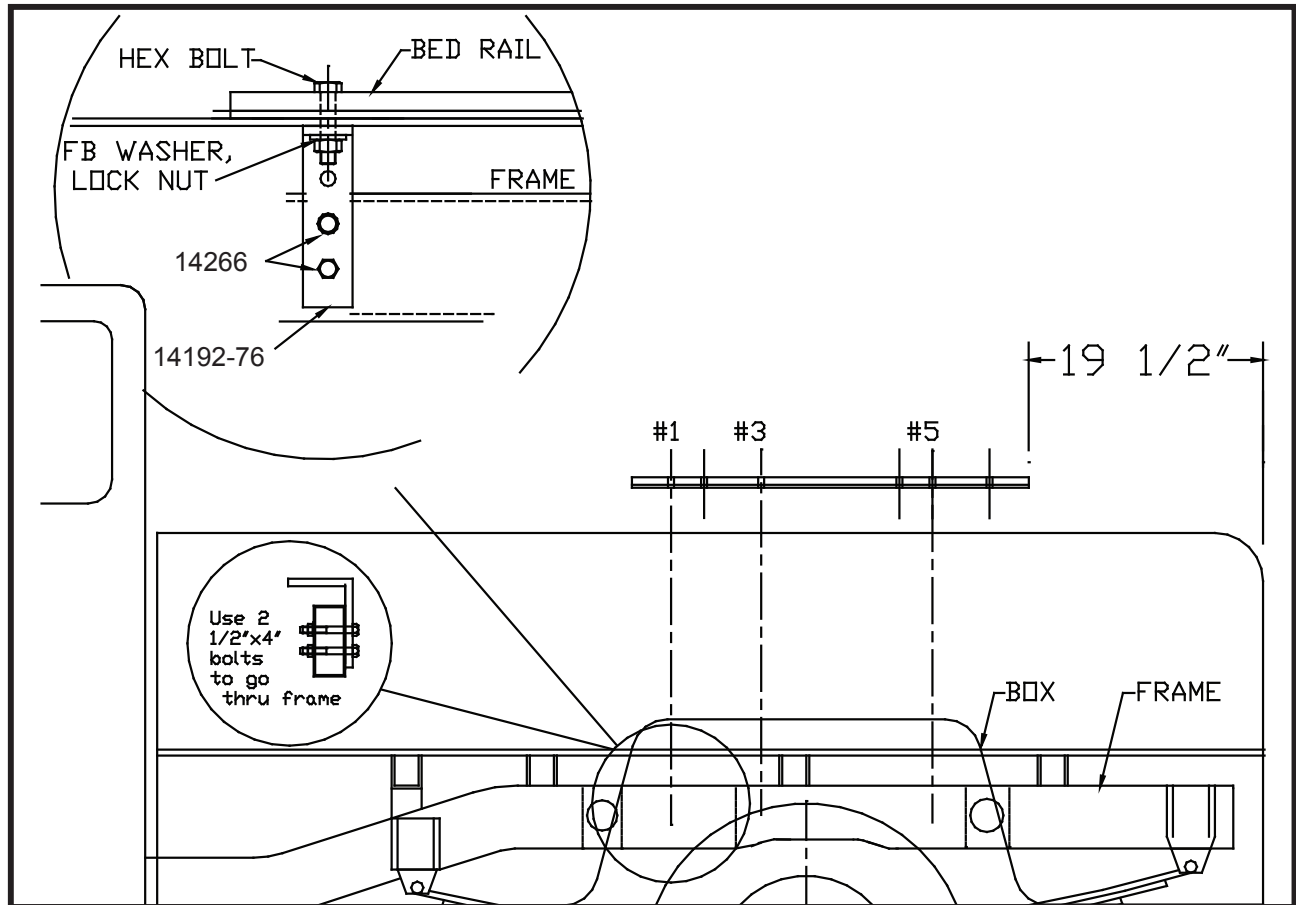


INSTALLATION

- Completely assemble hitch. See GENERAL INSTRUCTIONS and SAFETY supplied.
 - Set hitch into back of truck, center it side to side.
 - Measure 21 3/4" from back edge of truck box to back edge of bed rail.
- Check underneath box at bolt hole locations for any obstructions (frame members, etc.).
- Drill two 17/32" holes thru HOLE #1, each bed rail.
 - Insert two 1/2" x 3" (04073) long hex bolts.
 - Drill thru HOLES #3 and #5, each bed rail. Insert four 1/2" x 3" hex bolts (04073).
- Under box, place (14192-76) frame brackets onto hex bolts (six places).
 - Loosely install frame washer (14235-95), 1/2" flat washer (00085), and 1/2" Nylon lock nut (02178).
 - Press each bracket tight against frame member, tighten nuts snug against box.
- Pilot drill* and drill 1/2" hole into truck frame, at two places thru holes in each frame bracket -- BE CAREFUL OF ELECTRIC OR FLUID LINES behind frame members.
 - Brackets will be bolted onto frame by drilling frame and fishing knurl bolt (14266) through frame with fish wire (14238) and attach with hex nut (00083) and lock washer (00084) on outside of bracket.
 - TIGHTEN ALL BOLTS ACCORDING TO CHART ON FRONT PAGE.

* To pilot drill: Use 1/2" drill bit or transfer punch to mark center. Drill thru with 1/4" drill.

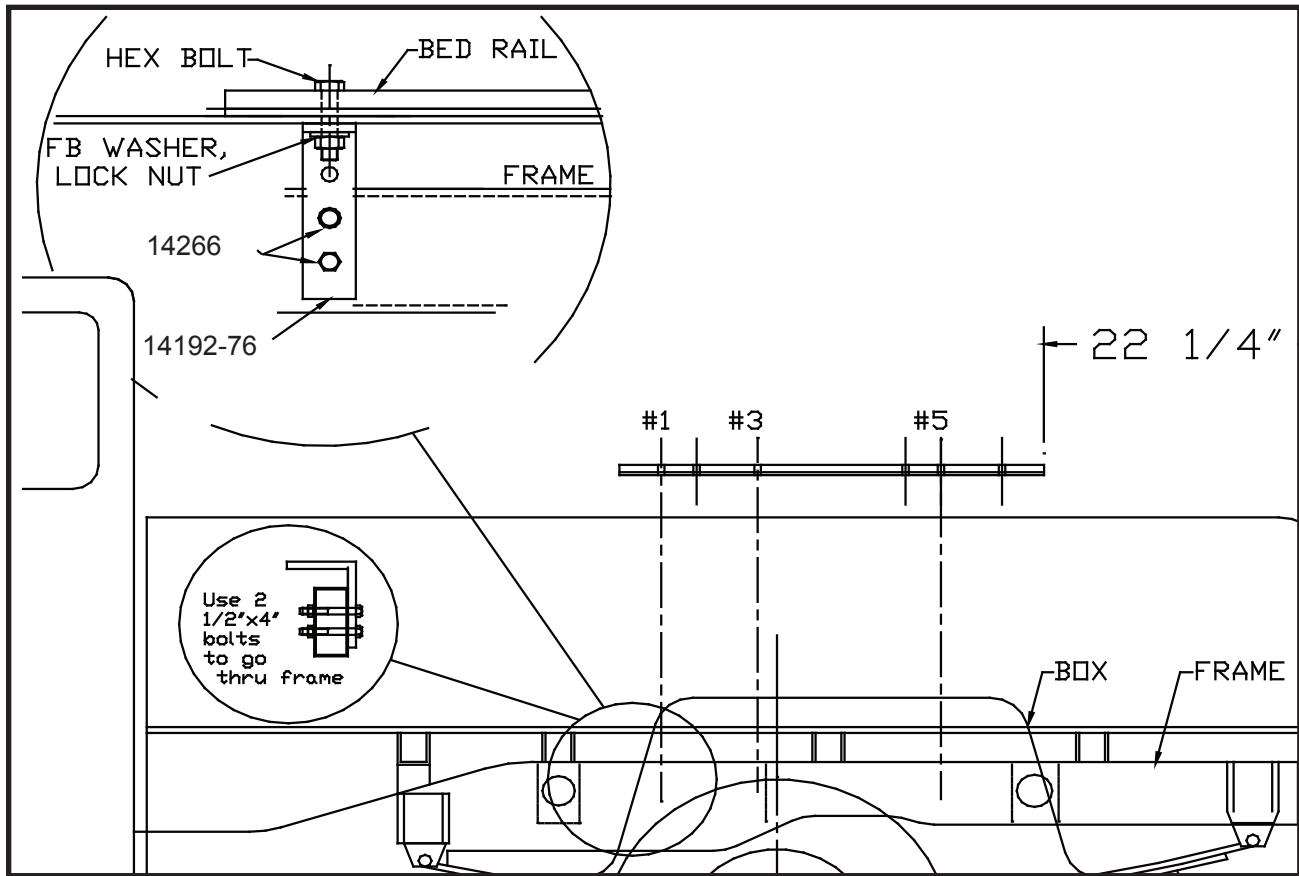
CHEVROLET / GMC: 1999-2007 Silverado & Sierra 1500 (5 1/2' & 6 1/2' Box)
 1999-2007 Silverado & Sierra 2500 (6 1/2' Box)
 2001-2004 1500 "Heavy Duty" (5 1/2' & 6 1/2' Box)



INSTALLATION

1. a. Completely assemble hitch. See GENERAL INSTRUCTIONS and SAFETY supplied.
 b. Set hitch into back of truck, center it side to side.
 c. Measure 19 1/2" from back edge of truck box to back edge of bed rail.
2. Check underneath box at bolt hole locations for any obstructions (frame members, etc.).
3. a. Drill two 17/32" holes thru HOLE #1, each bed rail.
 b. Insert two 1/2" x 3" (04073) long hex bolts.
 c. Slide hitch to rear position, to parallel bed rails.
 d. Drill thru HOLES #3 and #5, each bed rail. Insert four 1/2" x 3" hex bolts (04073).
4. a. Under box, place (14192-76) frame brackets onto hex bolts (six places).
 b. Loosely install frame washer (14235-95), 1/2" flat washer (00085), and 1/2" Nylon lock nut (02178).
 c. Press each bracket tight against frame member, tighten nuts snug against box.
5. a. Pilot drill* and drill 1/2" hole into truck frame, at two places thru holes in each frame bracket -- BE CAREFUL OF ELECTRIC OR FLUID LINES behind frame members.
 b. Brackets will be bolted onto frame by drilling frame and fishing knurl bolt (14266) through frame with fish wire (14238) and attach with hex nut (00083) and lock washer (00084) on outside of bracket.
 c. **TIGHTEN ALL BOLTS ACCORDING TO CHART ON FRONT PAGE.**

* To pilot drill: Use 1/2" drill bit or transfer punch to mark center. Drill thru with 1/4" drill.

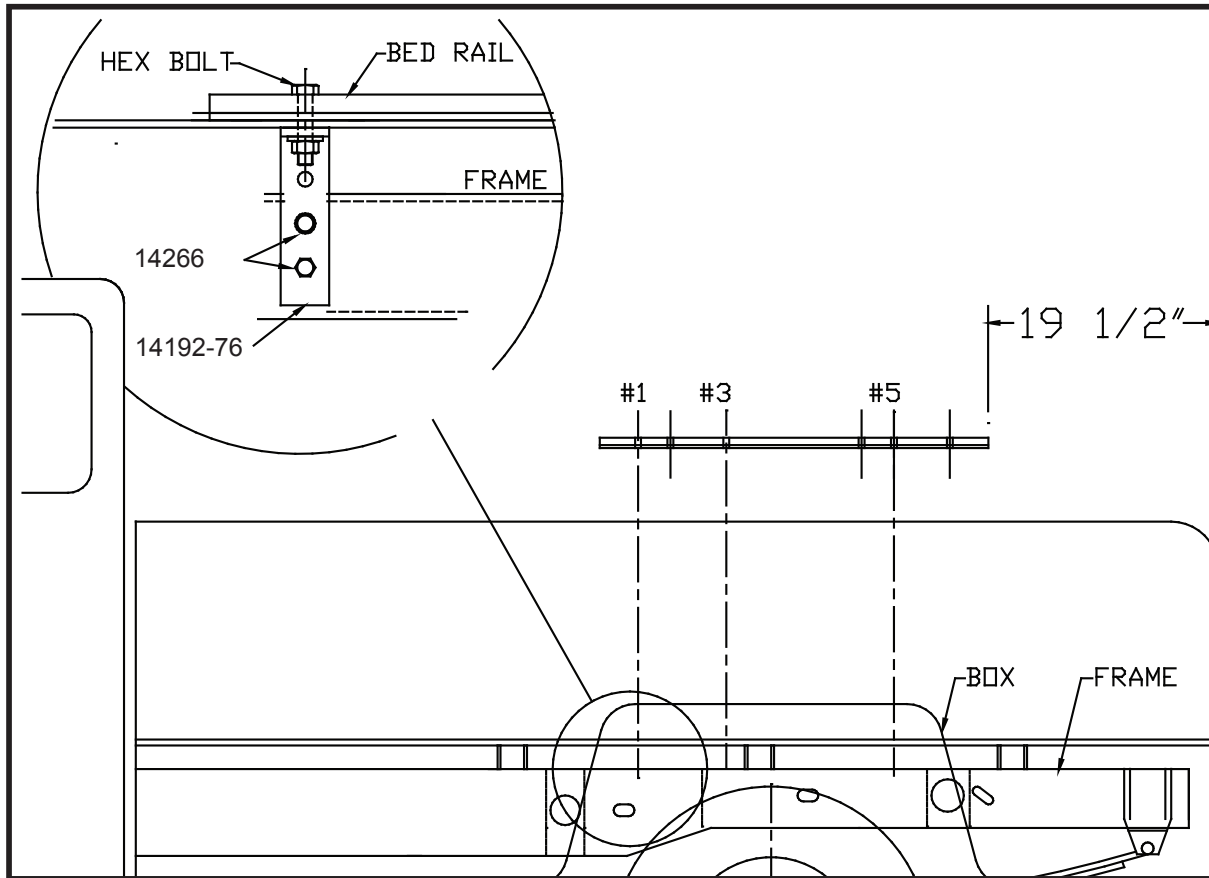


INSTALLATION

1. a. Completely assemble hitch. See GENERAL INSTRUCTIONS and SAFETY supplied.
 b. Set hitch into back of truck, center it side to side.
 c. Measure 22 1/4" from back edge of truck box to back edge of bed rail.
2. Check underneath box at bolt hole locations for any obstructions (frame members, etc.).
3. a. Drill two 17/32" holes thru HOLE #1, each bed rail.
 b. Insert two 1/2" x 3" (04073) long hex bolts.
 c. Slide hitch to rear position, to parallel bed rails.
 d. Drill thru HOLES #3 and #5, each bed rail. Insert four 1/2" x 3" hex bolts (04073).
4. a. Under box, place (14192-76) frame brackets onto hex bolts (six places).
 b. Loosely install frame washer (14235-95), 1/2" flat washer (00085), and 1/2" Nylon lock nut (02178).
 c. Press each bracket tight against frame member, tighten nuts snug against box.
5. a. Pilot drill* and drill 1/2" hole into truck frame, at two places thru holes in each frame bracket -- BE CAREFUL OF ELECTRIC OR FLUID LINES behind frame members.
 b. Brackets will be bolted onto frame by drilling frame and fishing knurl bolt (14266) through frame with fish wire (14238) and attach with hex nut (00083) and lock washer (00084) on outside of bracket.
 c. **TIGHTEN ALL BOLTS ACCORDING TO CHART ON FRONT PAGE.**

* To pilot drill: Use 1/2" drill bit or transfer punch to mark center. Drill thru with 1/4" drill.

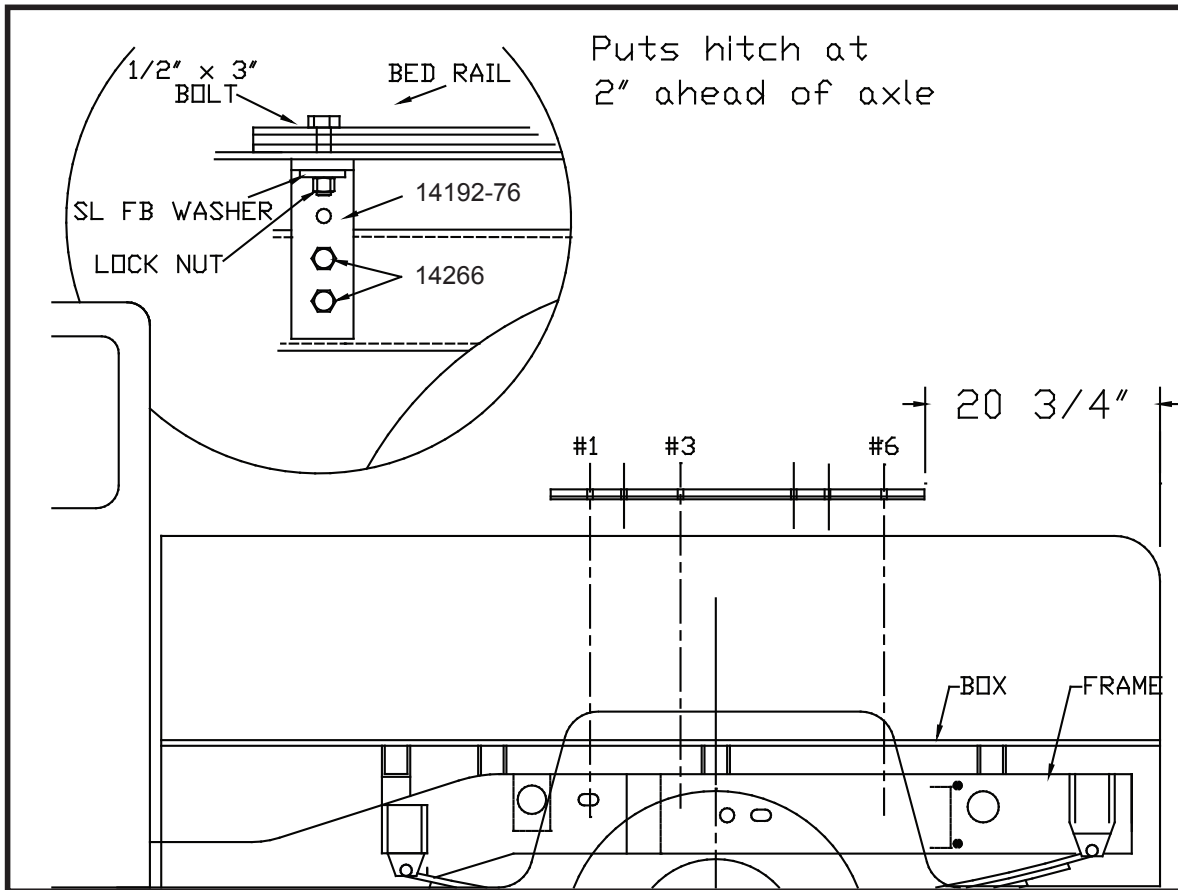
CHEVROLET / GMC: 2003-2007 Silverado & Sierra 1500 & 1500 "Heavy Duty"
(5 1/2' & 6 1/2' Box)



INSTALLATION

1. a. Completely assemble hitch. See GENERAL INSTRUCTIONS and SAFETY supplied.
b. Set hitch into back of truck, center it side to side.
c. Measure 19 1/2" from back edge of truck box to back edge of bed rail.
2. Check underneath box at bolt hole locations for any obstructions (frame members, etc.).
3. a. Drill two 17/32" holes thru HOLE #1, each bed rail.
b. Insert two 1/2" x 3" (04073) long hex bolts.
c. Slide hitch to rear position, to parallel bed rails.
d. Drill thru HOLES #3 and #5, each bed rail. Insert four 1/2" x 3" hex bolts (04073).
4. a. Under box, place (14192-76) frame brackets onto hex bolts (six places).
b. Loosely install frame washer (14235-95), 1/2" flat washer (00085), and 1/2" Nylon lock nut (02178).
c. Press each bracket tight against frame member, tighten nuts snug against box.
5. a. Pilot drill* and drill 1/2" hole into truck frame, at two places thru holes in each frame bracket -- BE CAREFUL OF ELECTRIC OR FLUID LINES behind frame members.
b. Brackets will be bolted onto frame by drilling frame and fishing knurl bolt (14266) through frame with fish wire (14238) and attach with hex nut (00083) and lock washer (00084) on outside of bracket.
c. **TIGHTEN ALL BOLTS ACCORDING TO CHART ON FRONT PAGE.**

* To pilot drill: Use 1/2" drill bit or transfer punch to mark center. Drill thru with 1/4" drill.

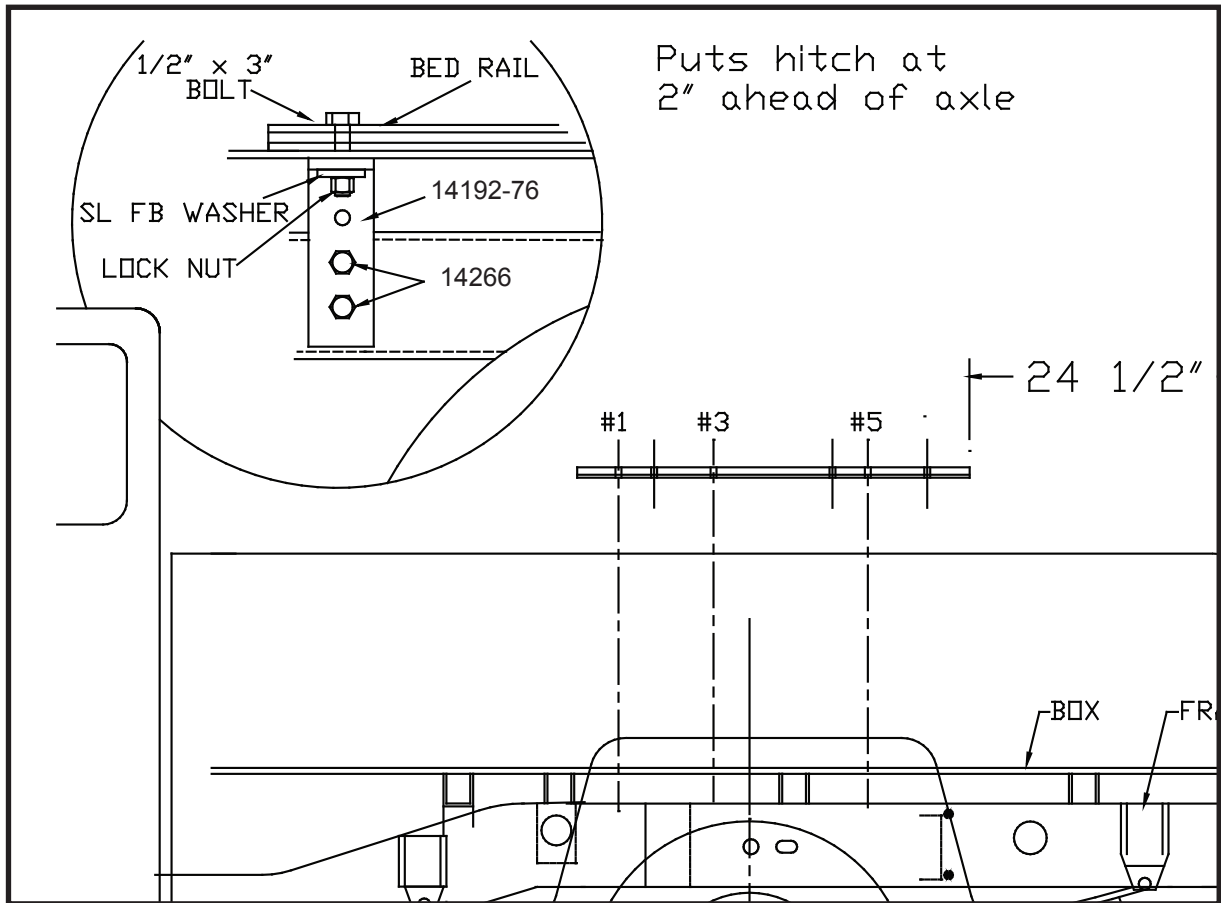


INSTALLATION

1. a. Completely assemble hitch. See GENERAL INSTRUCTIONS and SAFETY supplied.
 b. Set hitch into back of truck, center it side to side.
 c. Measure 20 3/4" from back edge of truck box to back edge of bed rail.
2. Check underneath box at bolt hole locations for any obstructions (frame members, etc.).
3. a. Drill two 17/32" holes thru HOLE #1, each bed rail.
 b. Insert two 1/2" x 3" (04073) long hex bolts.
 c. Slide hitch to rear position, to parallel bed rails.
 d. Drill thru HOLES #3 and #6, each bed rail. Insert four 1/2" x 3" hex bolts (04073).
4. a. Under box, place (14192-76) frame brackets onto hex bolts (six places).
 b. Loosely install frame washer (14235-95), 1/2" flat washer (00085), and 1/2" Nylon lock nut (02178).
 c. Press each bracket tight against frame member, tighten nuts snug against box.
5. a. Pilot drill* and drill 1/2" hole into truck frame, at two places thru holes in each frame bracket -- BE CAREFUL OF ELECTRIC OR FLUID LINES behind frame members.
 b. Brackets will be bolted onto frame by drilling frame and fishing knurl bolt (14266) through frame with fish wire (14238) and attach with hex nut (00083) and lock washer (00084) on outside of bracket.
 c. TIGHTEN ALL BOLTS ACCORDING TO CHART ON FRONT PAGE.

* To pilot drill: Use 1/2" drill bit or transfer punch to mark center. Drill thru with 1/4" drill.

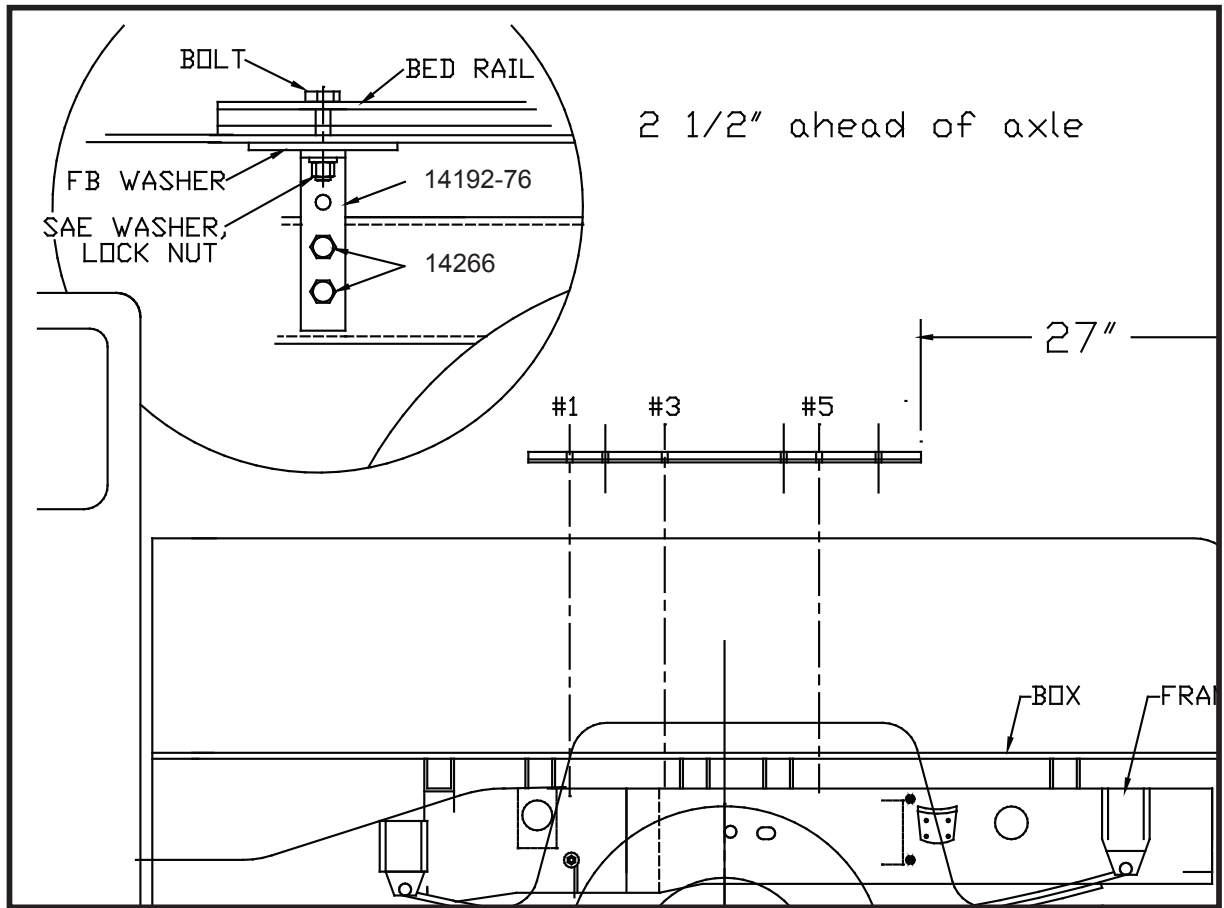
CHEVROLET / GMC: 2001-2007 Silverado & Sierra 2500 "Heavy Duty" (8' Box)



INSTALLATION

1. a. Completely assemble hitch. See GENERAL INSTRUCTIONS and SAFETY supplied.
b. Set hitch into back of truck, center it side to side.
c. Measure 24 1/2" from back edge of truck box to back edge of bed rail.
2. Check underneath box at bolt hole locations for any obstructions (frame members, etc.).
3. a. Drill two 17/32" holes thru HOLE #1, each bed rail.
b. Insert two 1/2" x 3" (04073) long hex bolts.
c. Slide hitch to rear position, to parallel bed rails.
d. Drill thru HOLES #3 and #5, each bed rail. Insert four 1/2" x 3" hex bolts (04073).
4. a. Under box, place (14192-76) frame brackets onto hex bolts (six places).
b. Loosely install frame washer (14235-95), 1/2" flat washer (00085), and 1/2" Nylon lock nut (02178).
c. Press each bracket tight against frame member, tighten nuts snug against box.
5. a. Pilot drill* and drill 1/2" hole into truck frame, at two places thru holes in each frame bracket -- BE CAREFUL OF ELECTRIC OR FLUID LINES behind frame members.
b. Brackets will be bolted onto frame by drilling frame and fishing knurl bolt (14266) through frame with fish wire (14238) and attach with hex nut (00083) and lock washer (00084) on outside of bracket.
c. **TIGHTEN ALL BOLTS ACCORDING TO CHART ON FRONT PAGE.**

* To pilot drill: Use 1/2" drill bit or transfer punch to mark center. Drill thru with 1/4" drill.

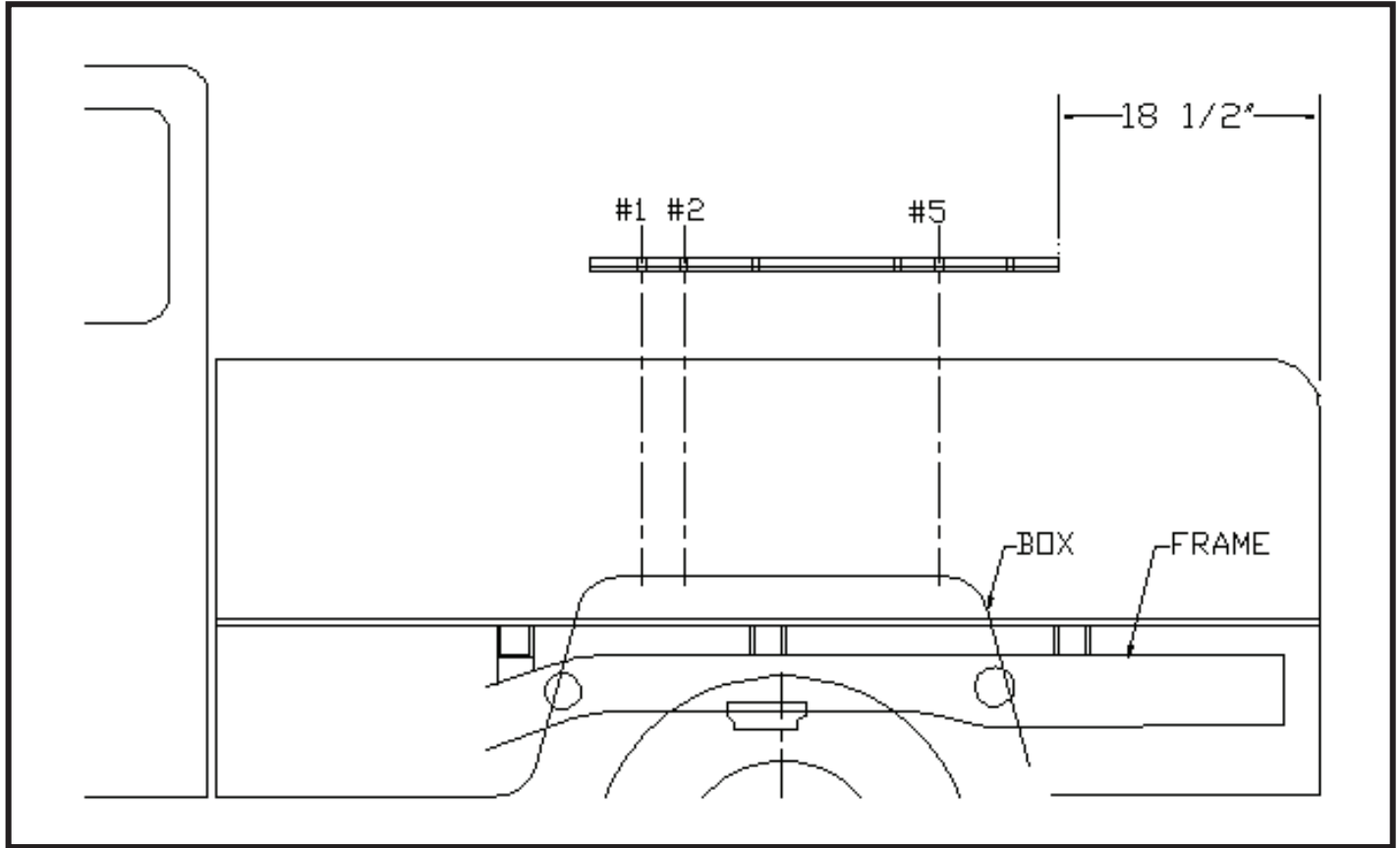


INSTALLATION

1. a. Completely assemble hitch. See GENERAL INSTRUCTIONS and SAFETY supplied.
 b. Set hitch into back of truck, center it side to side.
 c. Measure 27" from back edge of truck box to back edge of bed rail.
2. Check underneath box at bolt hole locations for any obstructions (frame members, etc.).
3. a. Drill two 17/32" holes thru HOLE #1, each bed rail.
 b. Insert two 1/2" x 3" (04073) long hex bolts.
 c. Slide hitch to rear position, to parallel bed rails.
 d. Drill thru HOLES #3 and #5, each bed rail. Insert four 1/2" x 3" hex bolts (04073).
4. a. Under box, place (14192-76) frame brackets onto hex bolts (six places).
 b. Loosely install frame washer (14235-95), 1/2" flat washer (00085), and 1/2" Nylon lock nut (02178).
 c. Press each bracket tight against frame member, tighten nuts snug against box.
5. a. Pilot drill* and drill 1/2" hole into truck frame, at two places thru holes in each frame bracket -- BE CAREFUL OF ELECTRIC OR FLUID LINES behind frame members.
 b. Brackets will be bolted onto frame by drilling frame and fishing knurl bolt (14266) through frame with fish wire (14238) and attach with hex nut (00083) and lock washer (00084) on outside of bracket.
 c. TIGHTEN ALL BOLTS ACCORDING TO CHART ON FRONT PAGE.

* To pilot drill: Use 1/2" drill bit or transfer punch to mark center. Drill thru with 1/4" drill.

CHEVROLET/GMC: 2007-2013 Silverado & Sierra 1500
(5 1/2', 6 1/2' & 8' Box tube frame)

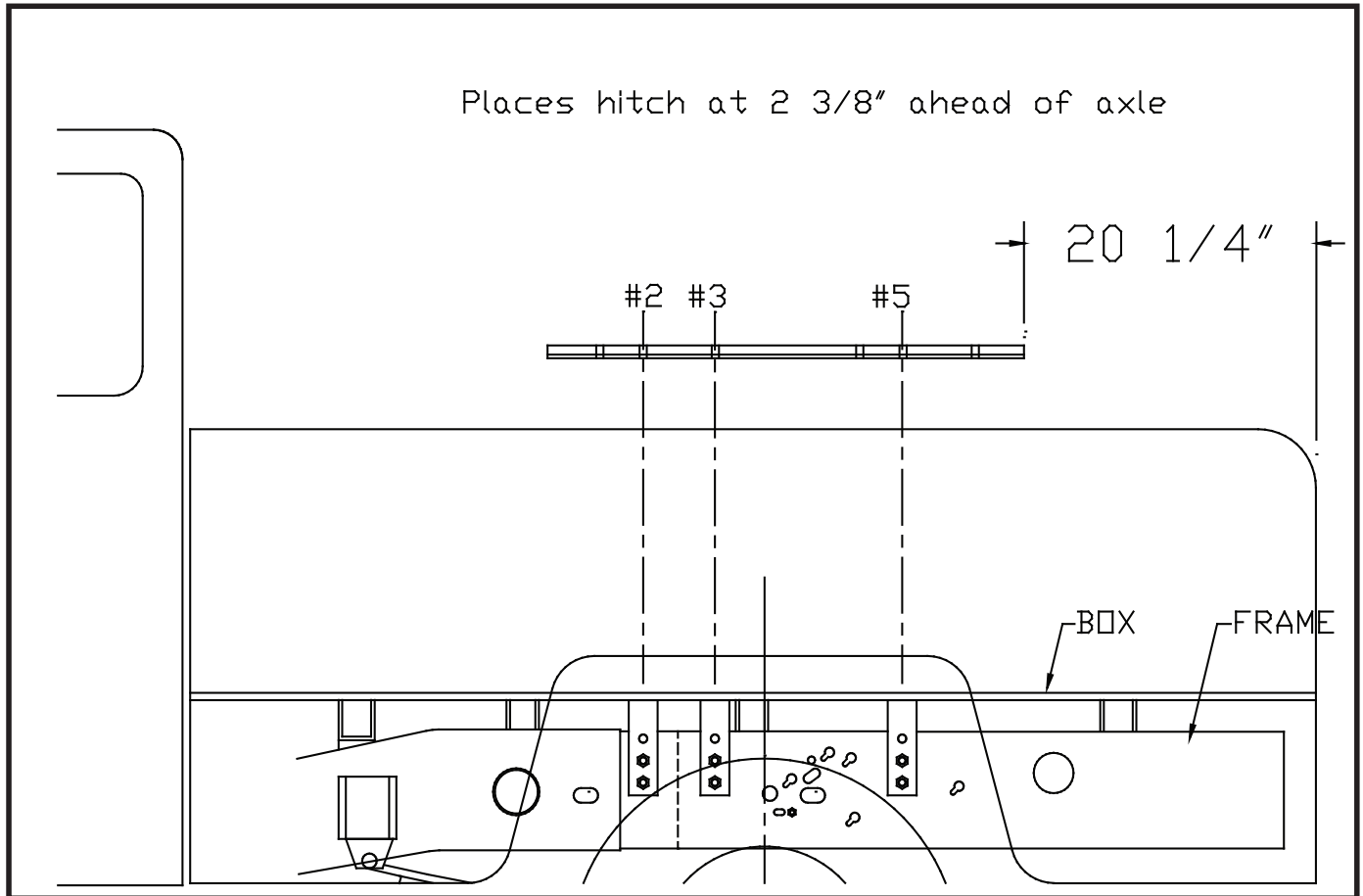


INSTALLATION

1. a. Completely assemble hitch. See GENERAL INSTRUCTIONS and SAFETY supplied.
b. Set hitch into back of truck, center it side to side.
c. Measure 18 1/2" from back edge of truck box to back edge of bed rail.
2. Check underneath box at bolt hole locations for any obstructions (frame members, etc.).
3. a. Drill two 17/32" holes thru HOLE #1, each bed rail.
b. Insert two 1/2" x 3" (04073) long hex bolts.
c. Slide hitch to rear position, to parallel bed rails.
d. Drill thru HOLES #2 and #5, each bed rail. Insert four 1/2" x 3" hex bolts (04073).
4. a. Under box, place (14192-76) frame brackets onto hex bolts (six places).
b. Loosely install frame washer (14235-95), 1/2" flat washer (00085), and 1/2" Nylon lock nut (02178).
c. Press each bracket tight against frame member, tighten nuts snug against box.
5. a. Pilot drill* and drill 1/2" hole into truck frame, at two places thru holes in each frame bracket -- BE CAREFUL OF ELECTRIC OR FLUID LINES behind frame members.
b. Brackets will be bolted onto frame by drilling frame and fishing knurl bolt (14266) through frame with fish wire (14238) and attach with hex nut (00083) and lock washer (00084) on outside of bracket.
c. TIGHTEN ALL BOLTS ACCORDING TO CHART ON FRONT PAGE.

* To pilot drill: Use 1/2" drill bit or transfer punch to mark center. Drill thru with 1/4" drill.

CHEVROLET/GMC: 2007-2010 Silverado & Sierra 2500 "Heavy Duty"
(6 1/2' Box New Style)

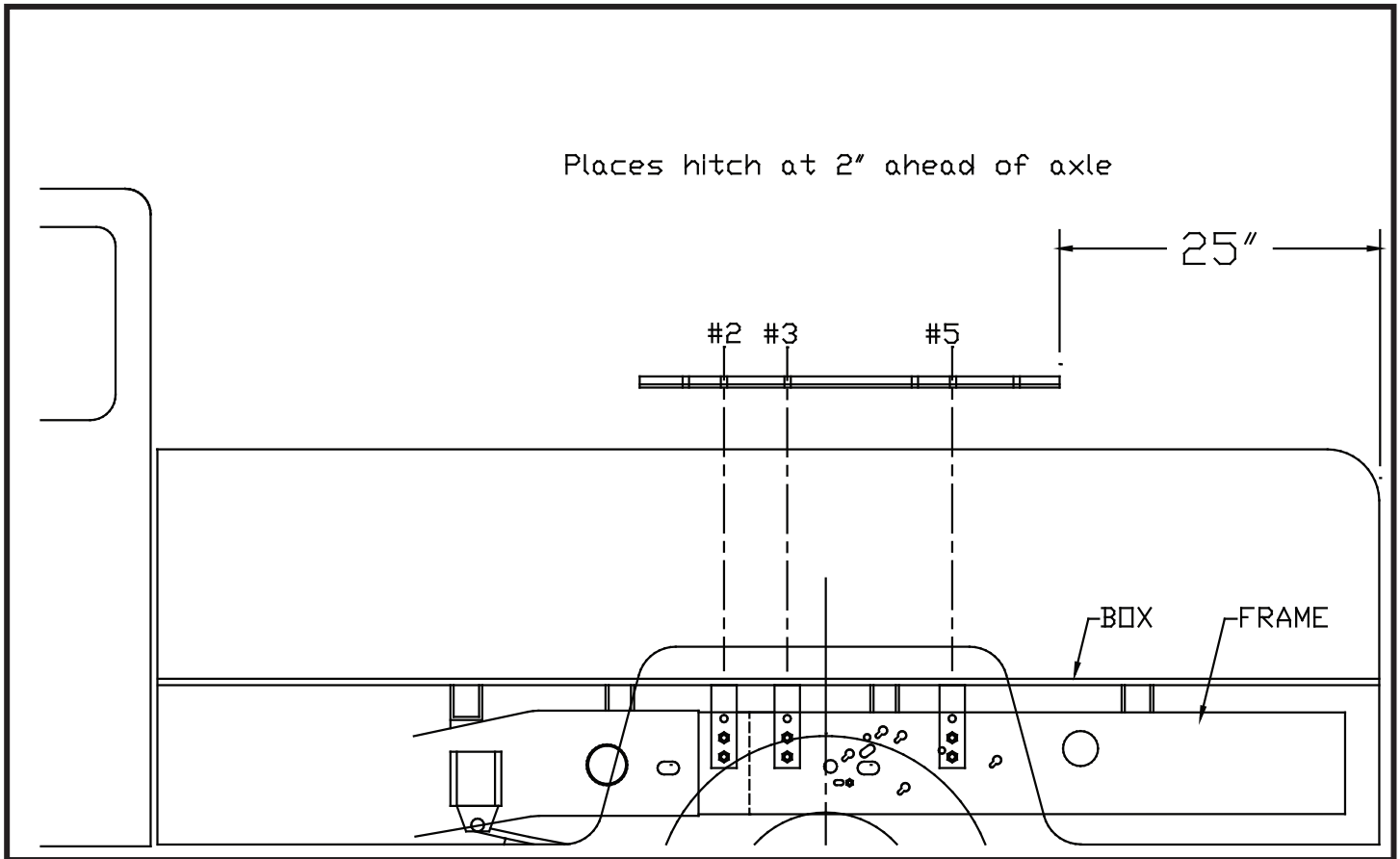


INSTALLATION

1. a. Completely assemble hitch. See GENERAL INSTRUCTIONS and SAFETY supplied.
b. Set hitch into back of truck, center it side to side.
c. Measure 20 1/4" from back edge of truck box to back edge of bed rail.
2. Check underneath box at bolt hole locations for any obstructions (frame members, etc.).
3. a. Drill two 17/32" holes thru HOLE #2, each bed rail.
b. Insert two 1/2" x 3" (04073) long hex bolts.
c. Slide hitch to rear position, to parallel bed rails.
d. Drill thru HOLES #3 and #5, each bed rail. Insert four 1/2" x 3" hex bolts (04073).
4. a. Under box, place (14192-76) frame brackets onto hex bolts (six places).
b. Loosely install frame washer (14235-95), 1/2" flat washer (00085), and 1/2" Nylon lock nut (02178).
c. Press each bracket tight against frame member, tighten nuts snug against box.
5. a. Pilot drill* and drill 1/2" hole into truck frame, at two places thru holes in each frame bracket -- BE CAREFUL OF ELECTRIC OR FLUID LINES behind frame members.
b. Brackets will be bolted onto frame by drilling frame and fishing knurl bolt (14266) through frame with fish wire (14238) and attach with hex nut (00083) and lock washer (00084) on outside of bracket.
c. **TIGHTEN ALL BOLTS ACCORDING TO CHART ON FRONT PAGE.**

* To pilot drill: Use 1/2" drill bit or transfer punch to mark center. Drill thru with 1/4" drill.

CHEVROLET/GMC: 2007-2010 Silverado & Sierra 2500 "Heavy Duty"
(8' Box New Style)

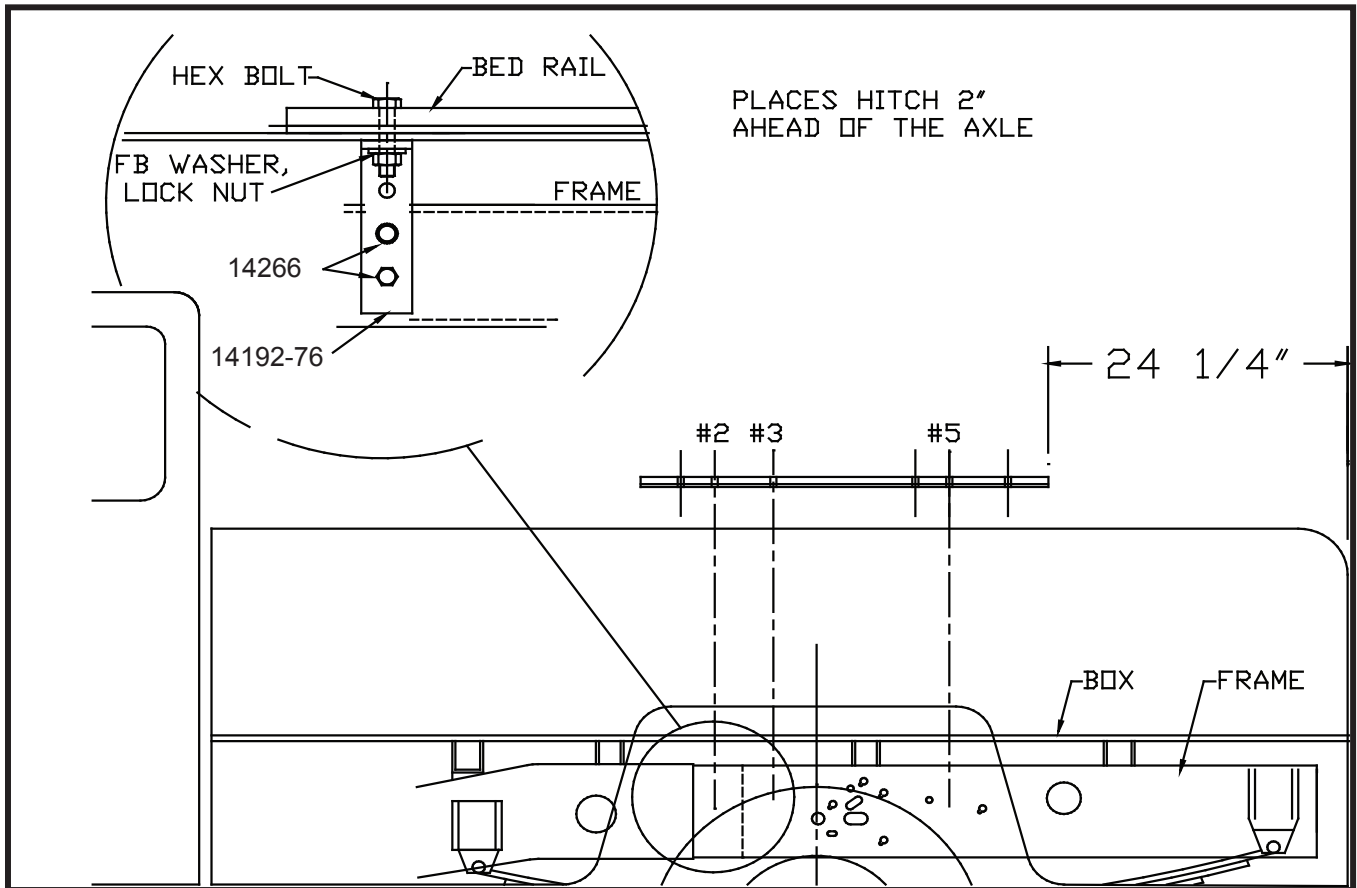


INSTALLATION

1. a. Completely assemble hitch. See GENERAL INSTRUCTIONS and SAFETY supplied.
b. Set hitch into back of truck, center it side to side.
c. Measure 25" from back edge of truck box to back edge of bed rail.
2. Check underneath box at bolt hole locations for any obstructions (frame members, etc.).
3. a. Drill two 17/32" holes thru HOLE #2, each bed rail.
b. Insert two 1/2" x 3" (04073) long hex bolts.
c. Slide hitch to rear position, to parallel bed rails.
d. Drill thru HOLES #3 and #5, each bed rail. Insert four 1/2" x 3" hex bolts (04073).
4. a. Under box, place (14192-76) frame brackets onto hex bolts (six places).
b. Loosely install frame washer (14235-95), 1/2" flat washer (00085), and 1/2" Nylon lock nut (02178).
c. Press each bracket tight against frame member, tighten nuts snug against box.
5. a. Pilot drill* and drill 1/2" hole into truck frame, at two places thru holes in each frame bracket -- BE CAREFUL OF ELECTRIC OR FLUID LINES behind frame members.
b. Brackets will be bolted onto frame by drilling frame and fishing knurl bolt (14266) through frame with fish wire (14238) and attach with hex nut (00083) and lock washer (00084) on outside of bracket.
c. TIGHTEN ALL BOLTS ACCORDING TO CHART ON FRONT PAGE.

* To pilot drill: Use 1/2" drill bit or transfer punch to mark center. Drill thru with 1/4" drill.

CHEVROLET/GMC: 2007-2010 Silverado & Sierra 3500 "Heavy Duty"
(8' Box New Style)

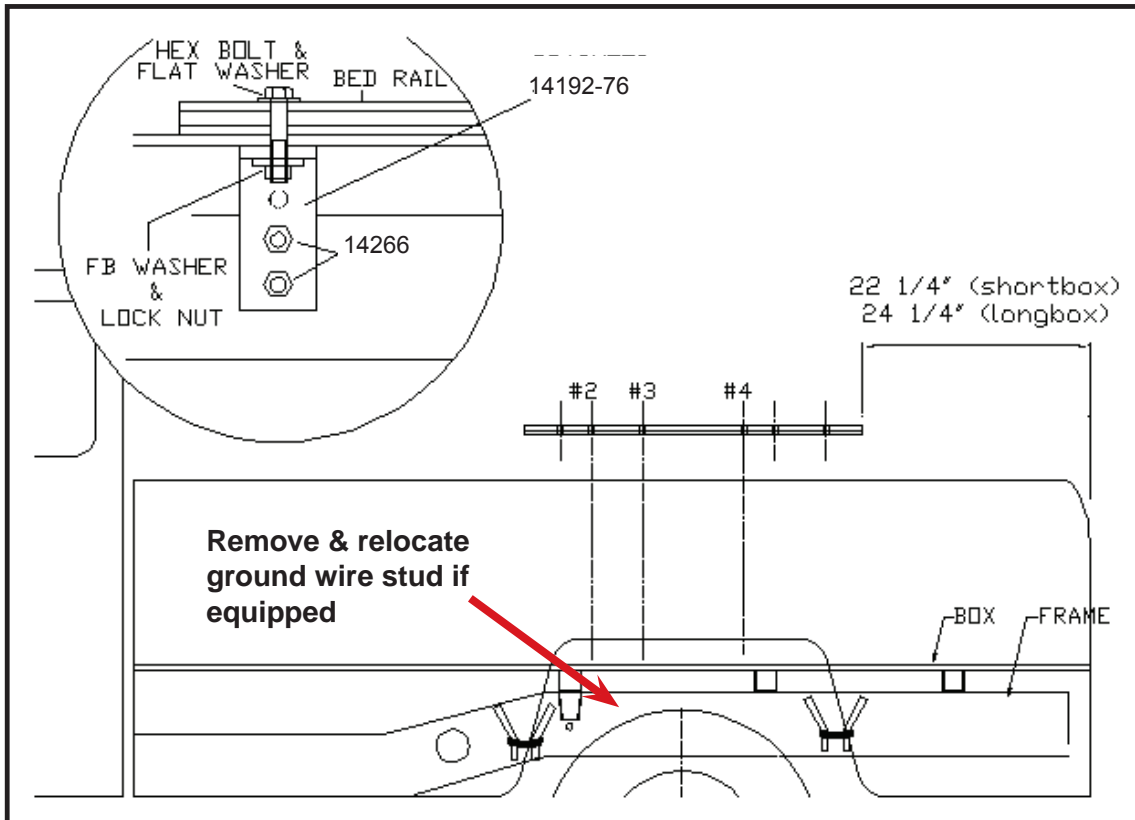


INSTALLATION

1. a. Completely assemble hitch. See GENERAL INSTRUCTIONS and SAFETY supplied.
 b. Set hitch into back of truck, center it side to side.
 c. Measure 24 1/4" from back edge of truck box to back edge of bed rail.
2. Check underneath box at bolt hole locations for any obstructions (frame members, etc.).
3. a. Drill two 17/32" holes thru HOLE #2, each bed rail.
 b. Insert two 1/2" x 3" (04073) long hex bolts.
 c. Slide hitch to rear position, to parallel bed rails.
 d. Drill thru HOLES #3 and #5, each bed rail. Insert four 1/2" x 3" hex bolts (04073).
4. a. Under box, place (14192-76) frame brackets onto hex bolts (six places).
 b. Loosely install frame washer (14235-95), 1/2" flat washer (00085), and 1/2" Nylon lock nut (02178).
 c. Press each bracket tight against frame member, tighten nuts snug against box.
5. a. Pilot drill* and drill 1/2" hole into truck frame, at two places thru holes in each frame bracket -- BE CAREFUL OF ELECTRIC OR FLUID LINES behind frame members.
 b. Brackets will be bolted onto frame by drilling frame and fishing knurl bolt (14266) through frame with fish wire (14238) and attach with hex nut (00083) and lock washer (00084) on outside of bracket.
 c. TIGHTEN ALL BOLTS ACCORDING TO CHART ON FRONT PAGE.

* To pilot drill: Use 1/2" drill bit or transfer punch to mark center. Drill thru with 1/4" drill.

DODGE: 2002-2008 RAM 1500 (5 1/2', 6 1/2' & 8' Box Includes Mega Cab)
 2003-2013 RAM 2500 (4x2 & 4x4) (6 1/2' & 8' Box)
 2003-2012 RAM 3500 (4x2 & 4x4) (6 1/2' & 8' Box)
 HIJACKER HITCH: 24-SL



INSTALLATION

1. a. Completely assemble hitch. See GENERAL INSTRUCTIONS and SAFETY supplied.
 b. Set hitch into back of truck, center it side to side.
 c. Measure 22 1/4" (6 1/2' Box) or 24 1/4" (8' Box) from back edge of truck box to back edge of bed rail.
 2. Check underneath box at bolt hole locations for any obstructions (frame members, etc.).
 3. a. Drill two 17/32" holes thru HOLE #2, each bed rail.
 b. Insert two 1/2" x 3" (04073) long hex bolts.
 c. Slide hitch to rear position, to parallel bed rails.
 d. Drill thru HOLES #3 and #4, each bed rail. Insert four 1/2" x 3" hex bolts (04073).
 4. a. Under box, place (14192-76) frame brackets onto hex bolts (six places).
 b. Loosely install frame washer (14235-95), 1/2" flat washer (00085), and 1/2" Nylon lock nut (02178).
 c. Press each bracket tight against frame member, tighten nuts snug against box.
 5. a. Pilot drill* and drill 1/2" hole into truck frame, at two places thru holes in each frame bracket -- BE CAREFUL OF ELECTRIC OR FLUID LINES behind frame members.
 b. Brackets will be bolted onto frame by drilling frame and fishing knurl bolt (14266) through frame with fish wire (14238) and attach with hex nut (00083) and lock washer (00084) on outside of bracket.
 c. **TIGHTEN ALL BOLTS ACCORDING TO CHART ON FRONT PAGE.**
- * To pilot drill: Use 1/2" drill bit or transfer punch to mark center. Drill thru with 1/4" drill.