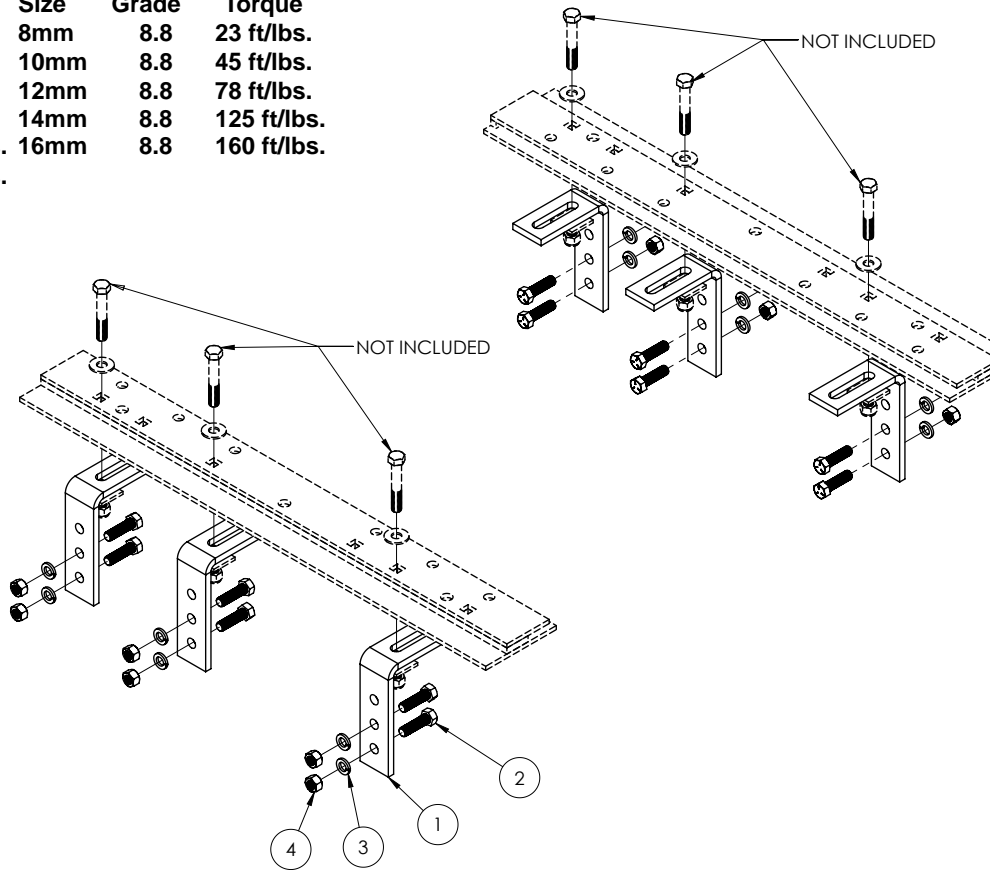


FRAME BRACKET 8553003

Dodge, Ford & Chevrolet/GMC

BOLT TORQUE SPECIFICATIONS

STANDARD BOLTS			METRIC BOLTS		
Size	Grade	Torque	Size	Grade	Torque
5/16"	5	18 ft/lbs.	8mm	8.8	23 ft/lbs.
3/8"	5	30 ft/lbs.	10mm	8.8	45 ft/lbs.
7/16"	5	50 ft/lbs.	12mm	8.8	78 ft/lbs.
1/2"	5	75 ft/lbs.	14mm	8.8	125 ft/lbs.
5/8"	5	150 ft/lbs.	16mm	8.8	160 ft/lbs.
3/4"	5	290 ft/lbs.			

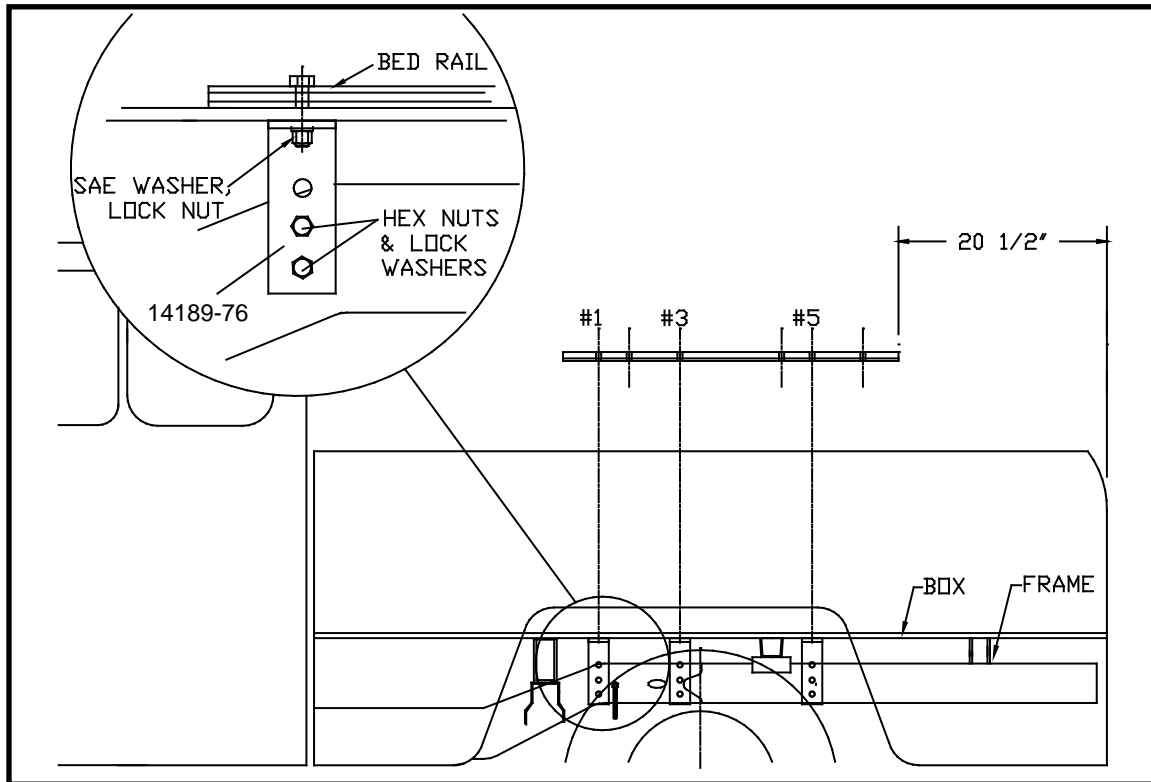


ITEM	PART #	DESCRIPTION	QTY
1	14189-76	411 FRAME BRACKET	6
2	14266	BOLT, HEX KNURLED .50NC X 1.75 GR.5	12
3	00084	WASHER, LOCK .50	12
4	00083	NUT, HEX .50NC	12
5	14238	FISH WIRE .50 (NOT SHOWN)	1

Please order replacement parts by **PART NO.** and **DESCRIPTION**

INSTALLATION

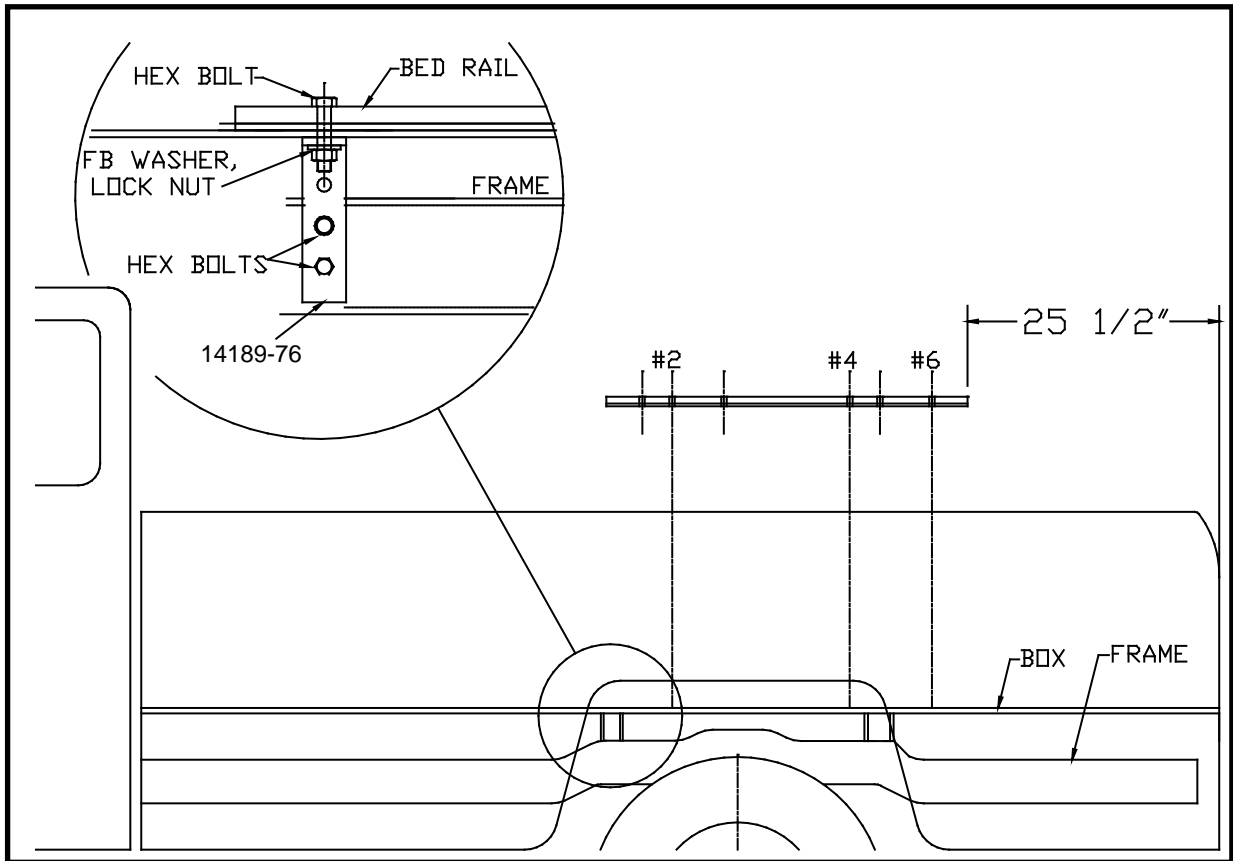
DODGE: 2005 DAKOTA (6 1/2' BOX ONLY)



INSTALLATION

1. a. Completely assemble hitch. See GENERAL INSTRUCTIONS and SAFETY supplied.
b. Set hitch into back of truck, center it side to side.
c. Measure 20 1/2" from back edge of truck box to edge of bed rail.
2. a. First check for obstructions under box, then drill two 17/32" holes thru HOLE #1 of each bed rail.
b. Insert two 1/2" x 3" long hex bolts.
c. Drill thru HOLES #3 & #5 of each bed rail. Insert four remaining hex bolts.
3. a. Under box, place standard frame brackets (14189-76) onto hex bolts (6 places).
b. Loosely install 1 1/2" square washers & lock nuts.
c. Press each bracket tight against frame member; tighten nuts snug against box.
4. a. Pilot drill* and drill 1/2" holes into truck frame, at two places thru each frame bracket--BE CAREFUL OF ELECTRIC OR FLUID LINES behind frame members.
b. Brackets will be bolted onto frame by drilling frame and fishing knurl bolt (14266) through frame with fish wire (14238) and attach with hex nut (00083) and lock washer (00084) on outside of bracket.
c. TIGHTEN ALL BOLTS ACCORDING TO CHART ON FRONT PAGE.

* To pilot drill: Use 1/2" drill bit or transfer punch to mark center. Drill thru with 1/4" drill.



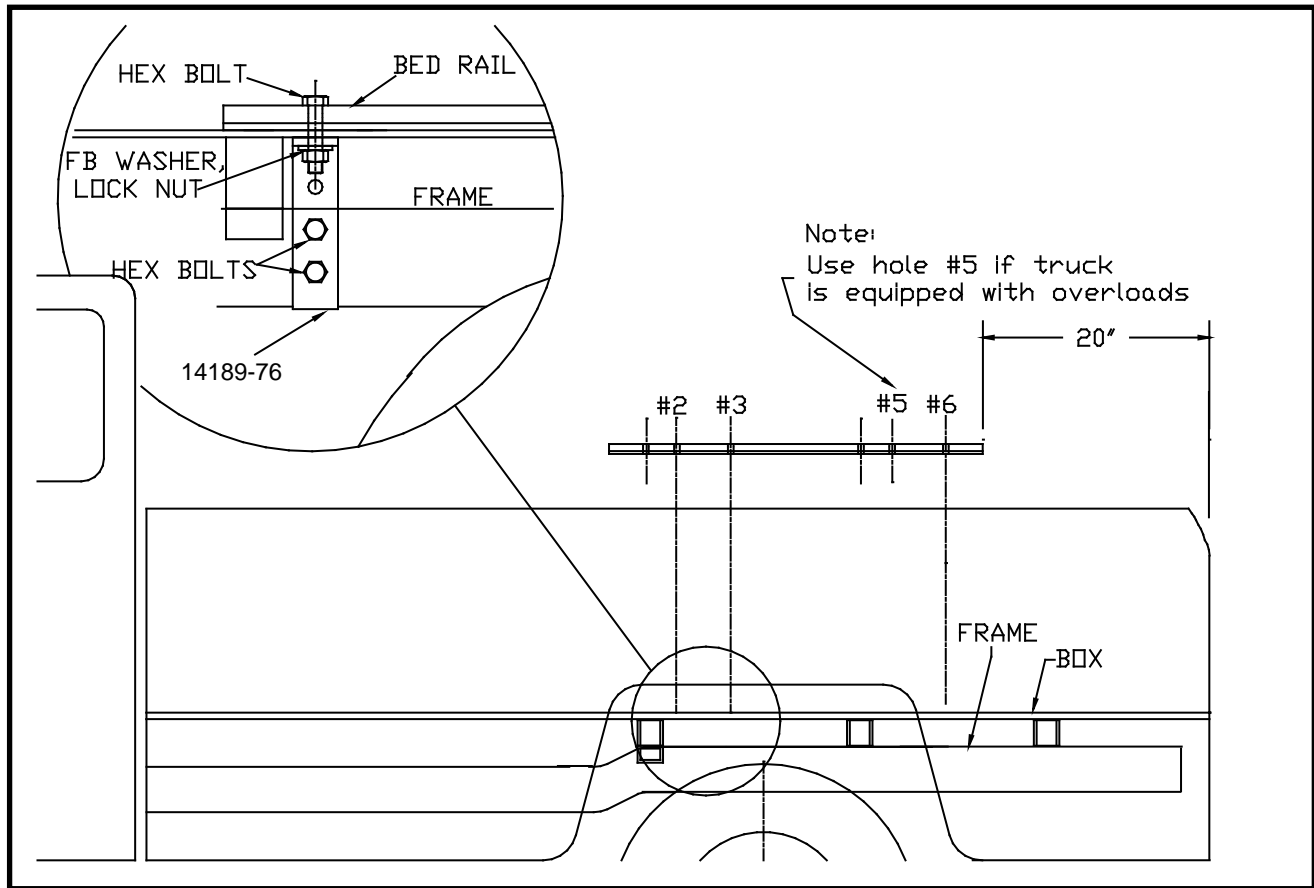
INSTALLATION

1. a. Completely assemble hitch. See GENERAL INSTRUCTIONS and SAFETY supplied.
 b. Set hitch into back of truck, center it side to side.
 c. Measure 25 1/2" from back edge of truck box to edge of bed rail.
2. a. First check for obstructions under box, then drill two 17/32" holes thru HOLE #2 of each bed rail.
 b. Insert two 1/2" x 3" long hex bolts.
 c. Drill thru HOLES #4 & #6 of each bed rail. Insert four remaining hex bolts.
3. a. Under box, place standard frame brackets (14189-76) onto hex bolts (6 places).
 b. Loosely install 1 1/2" square washers & lock nuts.
 c. Press each bracket tight against frame member; tighten nuts snug against box.
4. The fish wire (14238) will be required to fish the bolts through an access hole in the frame. Insert the 1/2" x 1 3/4" knurl bolts (14266) through drilled holes from inside the frame and use nuts (00083) to fasten on bracket side.
 a. Pilot drill* and drill 1/2" holes into truck frame, at two places thru each frame bracket--BE CAREFUL OF ELECTRIC OR FLUID LINES behind frame members.
 b. Brackets will be bolted onto frame by drilling frame and fishing knurl bolt (14266) through frame with fish wire (14238) and attach with hex nut (00083) and lock washer (00084) on outside of bracket.
 c. **TIGHTEN ALL BOLTS ACCORDING TO CHART ON FRONT PAGE.**

* To pilot drill: Use 1/2" drill bit or transfer punch to mark center. Drill thru with 1/4" drill.

INSTALLATION

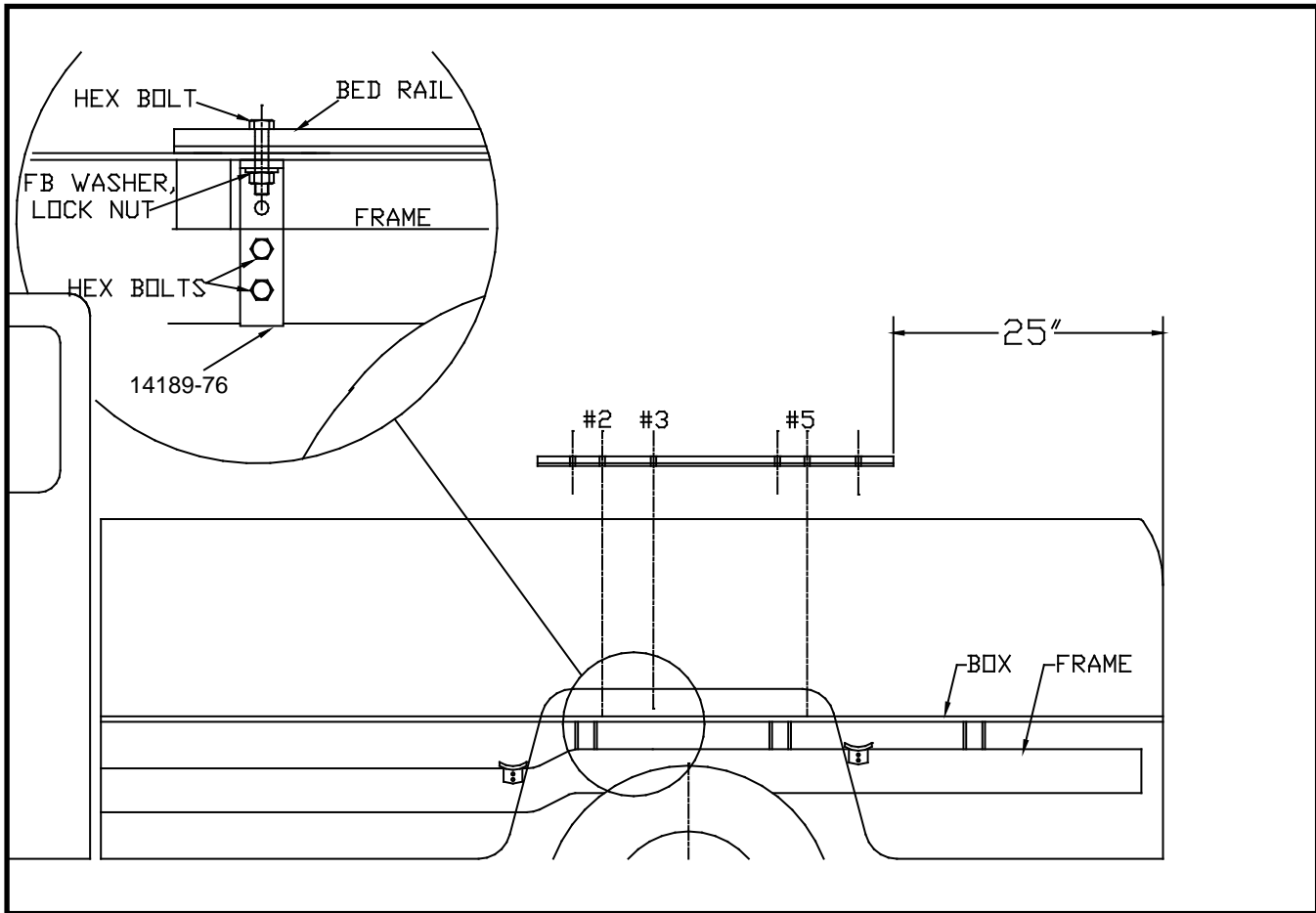
DODGE: 1994-2001 RAM 1500 (6 1/2' BOX) & 1994-2002 RAM 2500 & 3500 (6 1/2' BOX)



INSTALLATION

- Completely assemble hitch. See GENERAL INSTRUCTIONS and SAFETY supplied.
 - Set hitch into back of truck, center it side to side.
 - Measure 20" from back edge of truck box to edge of bed rail.
- First check for obstructions under box, then drill two 17/32" holes thru HOLE #2 of each bed rail.
 - Insert two 1/2" x 3" long hex bolts.
 - Drill thru HOLES #3 & #6 of each bed rail. Insert four remaining hex bolts. Use hole #5 if truck equipped with overloads.
- Under box, place standard frame brackets (14189-76) onto hex bolts (6 places).
 - Loosely install 1 1/2" square washers & lock nuts.
 - Press each bracket tight against frame member; tighten nuts snug against box.
- Pilot drill* and drill 1/2" holes into truck frame, at two places thru each frame bracket--BE CAREFUL OF ELECTRIC OR FLUID LINES behind frame members.
 - Brackets will be bolted onto frame by drilling frame and fishing knurl bolt (14266) through frame with fish wire (14238) and attach with hex nut (00083) and lock washer (00084) on outside of bracket.
 - TIGHTEN ALL BOLTS ACCORDING TO CHART ON FRONT PAGE.**

* To pilot drill: Use 1/2" drill bit or transfer punch to mark center. Drill thru with 1/4" drill.



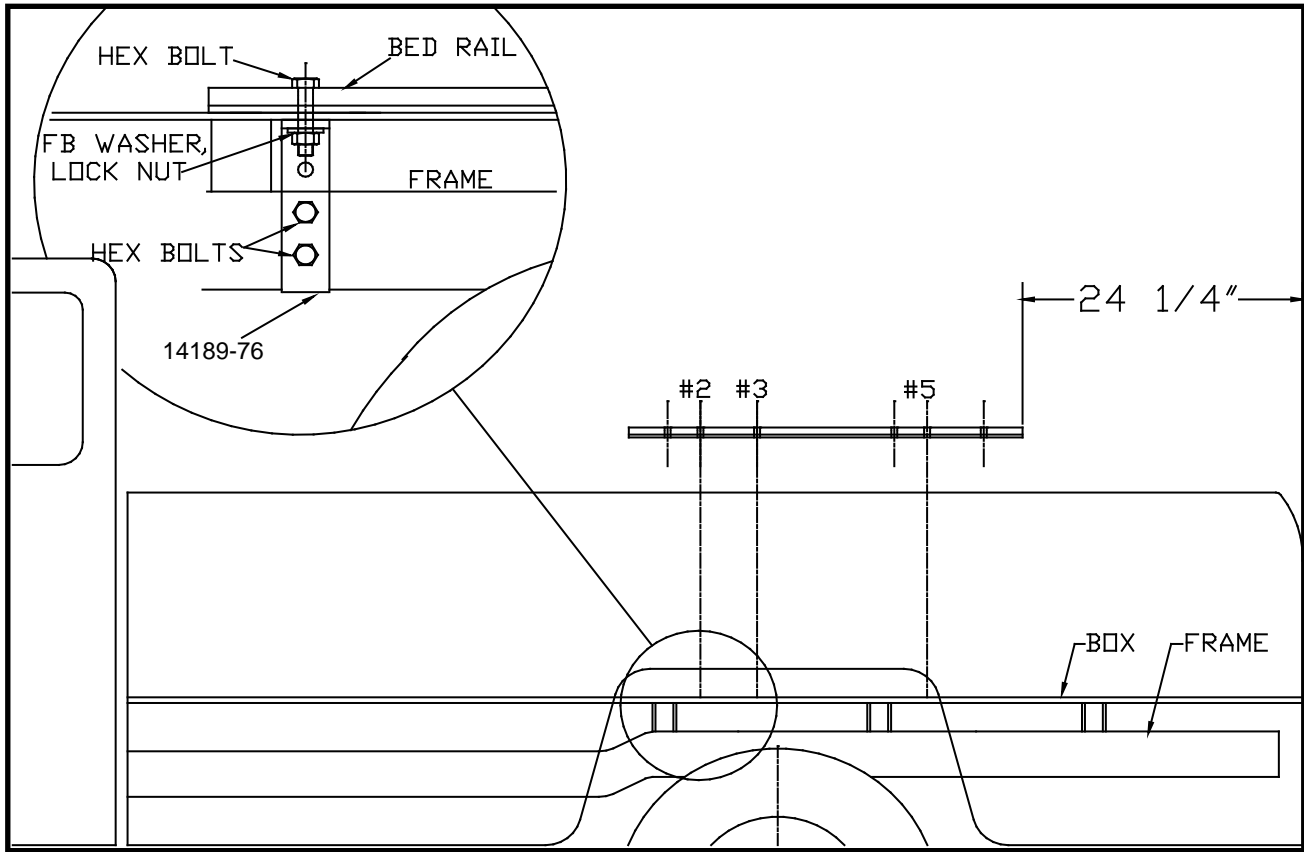
INSTALLATION

1. a. Completely assemble hitch. See GENERAL INSTRUCTIONS and SAFETY supplied.
 b. Set hitch into back of truck, center it side to side.
 c. Measure 25" from back edge of truck box to edge of bed rail.
2. a. First check for obstructions under box, then drill two 17/32" holes thru HOLE #2 of each bed rail.
 b. Insert two 1/2" x 3" long hex bolts.
 c. Slide hitch to rear pin hole position to parallel bed rails.
 d. Drill thru HOLES #3 & #5 of each bed rail. Insert four remaining hex bolts.
3. a. Under box, place standard frame brackets (14189-76) onto hex bolts (6 places).
 b. Loosely install 1 1/2" square washers & lock nuts.
 c. Press each bracket tight against frame member; tighten nuts snug against box.
4. a. Pilot drill* and drill 1/2" holes into truck frame, at two places thru each frame bracket--BE CAREFUL OF ELECTRIC OR FLUID LINES behind frame members.
 b. Brackets will be bolted onto frame by drilling frame and fishing knurl bolt (14266) through frame with fish wire (14238) and attach with hex nut (00083) and lock washer (00084) on outside of bracket.
 c. TIGHTEN ALL BOLTS ACCORDING TO CHART ON FRONT PAGE.

* To pilot drill: Use 1/2" drill bit or transfer punch to mark center. Drill thru with 1/4" drill.

INSTALLATION

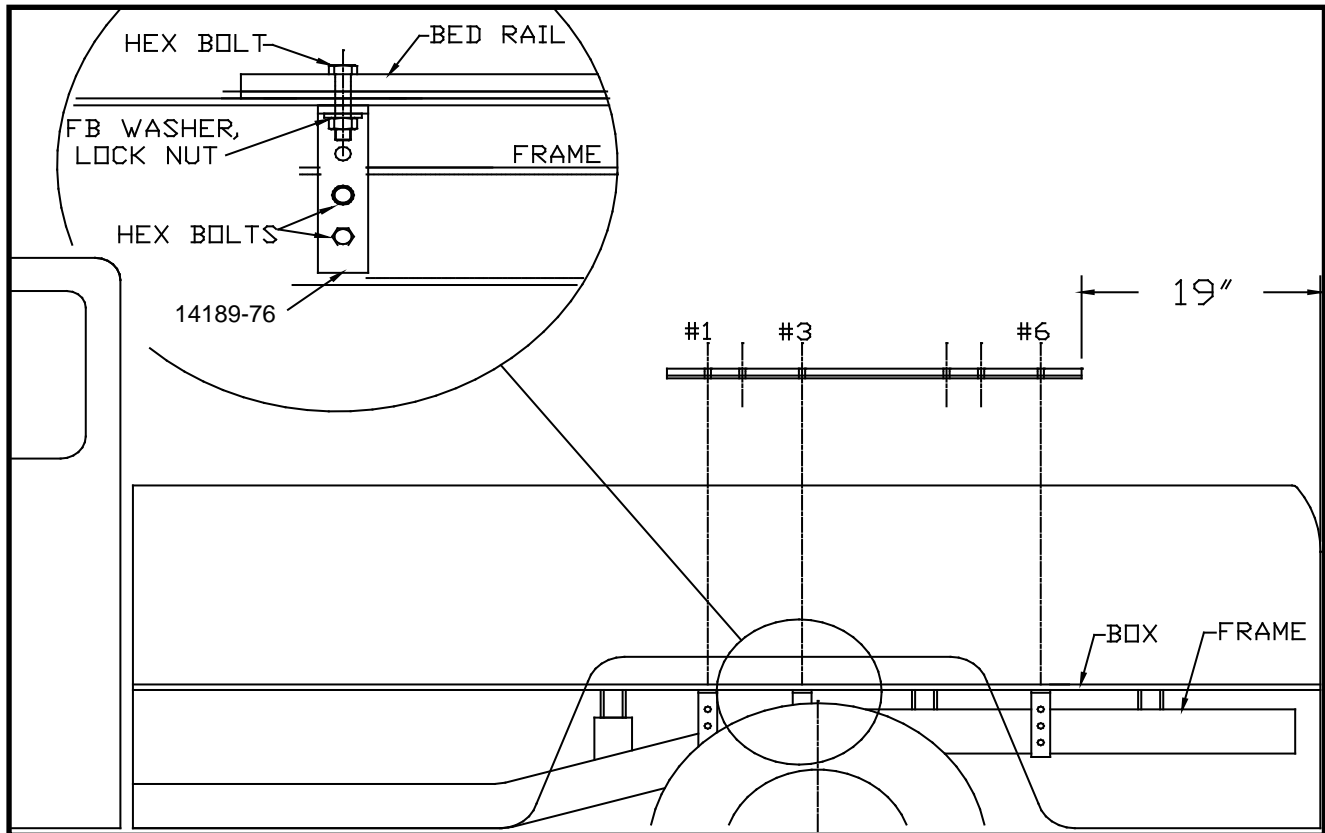
DODGE: 1998-2001 RAM 1500 (8' BOX) & 1998-2002 RAM 2500 & 3500 (8' BOX)



INSTALLATION

1. a. Completely assemble hitch. See GENERAL INSTRUCTIONS and SAFETY supplied.
b. Set hitch into back of truck, center it side to side.
c. Measure 24 1/4" from back edge of truck box to edge of bed rail.
2. a. First check for obstructions under box, then drill two 17/32" holes thru HOLE #2 of each bed rail.
b. Insert two 1/2" x 3" long hex bolts.
c. Slide hitch to rear pin hole position to parallel bed rails.
d. Drill thru HOLES #3 & #5 of each bed rail. Insert four remaining hex bolts.
3. a. Under box, place standard frame brackets (14189-76) onto hex bolts (6 places).
b. Loosely install 1 1/2" square washers & lock nuts.
c. Press each bracket tight against frame member; tighten nuts snug against box.
4. a. Pilot drill* and drill 1/2" holes into truck frame, at two places thru each frame bracket--BE CAREFUL OF ELECTRIC OR FLUID LINES behind frame members.
b. Brackets will be bolted onto frame by drilling frame and fishing knurl bolt (14266) through frame with fish wire (14238) and attach with hex nut (00083) and lock washer (00084) on outside of bracket.
c. **TIGHTEN ALL BOLTS ACCORDING TO CHART ON FRONT PAGE.**

* To pilot drill: Use 1/2" drill bit or transfer punch to mark center. Drill thru with 1/4" drill.



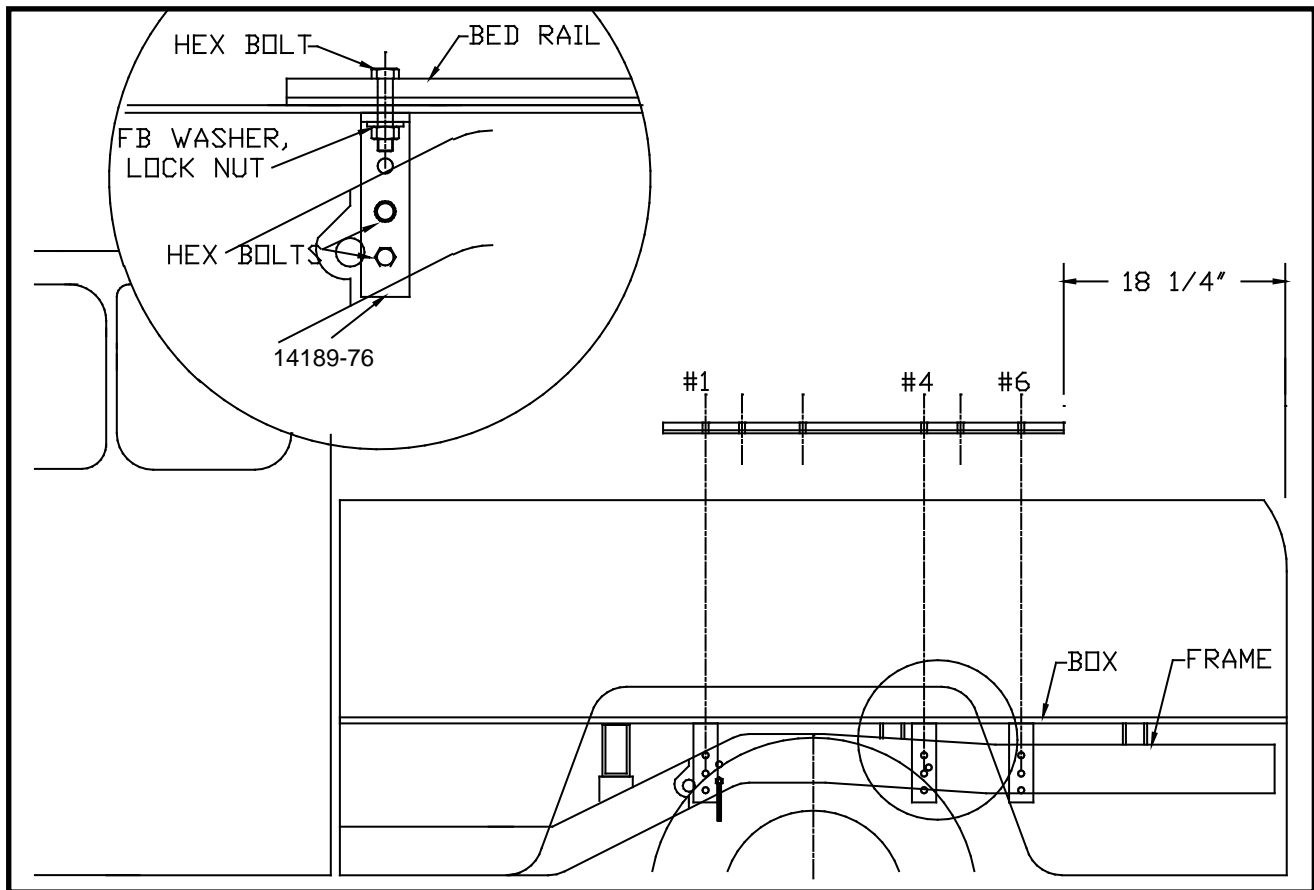
INSTALLATION

1. a. Completely assemble hitch. See GENERAL INSTRUCTIONS and SAFETY supplied.
 b. Set hitch into back of truck, center it side to side.
 c. Measure 19" from back edge of truck box to edge of bed rail.
2. a. First check for obstructions under box, then drill two 17/32" holes thru HOLE #1 of each bed rail.
 b. Insert two 1/2" x 3" long hex bolts.
 c. Drill thru HOLES #3 & #6 of each bed rail. Insert four remaining hex bolts.
3. a. Under box, place standard frame brackets (14189-76) onto hex bolts (6 places).
 b. Loosely install 1 1/2" square washers & lock nuts.
 c. Press each bracket tight against frame member; tighten nuts snug against box.
4. a. Pilot drill* and drill 1/2" holes into truck frame, at two places thru each frame bracket--BE CAREFUL OF ELECTRIC OR FLUID LINES behind frame members.
 b. Brackets will be bolted onto frame by drilling frame and fishing knurl bolt (14266) through frame with fish wire (14238) and attach with hex nut (00083) and lock washer (00084) on outside of bracket.
 c. TIGHTEN ALL BOLTS ACCORDING TO CHART ON FRONT PAGE.

* To pilot drill: Use 1/2" drill bit or transfer punch to mark center. Drill thru with 1/4" drill.

INSTALLATION

DODGE: 2003-2004 DAKOTA (6 1/2' BOX DOES NOT INCLUDE QUAD CAB)

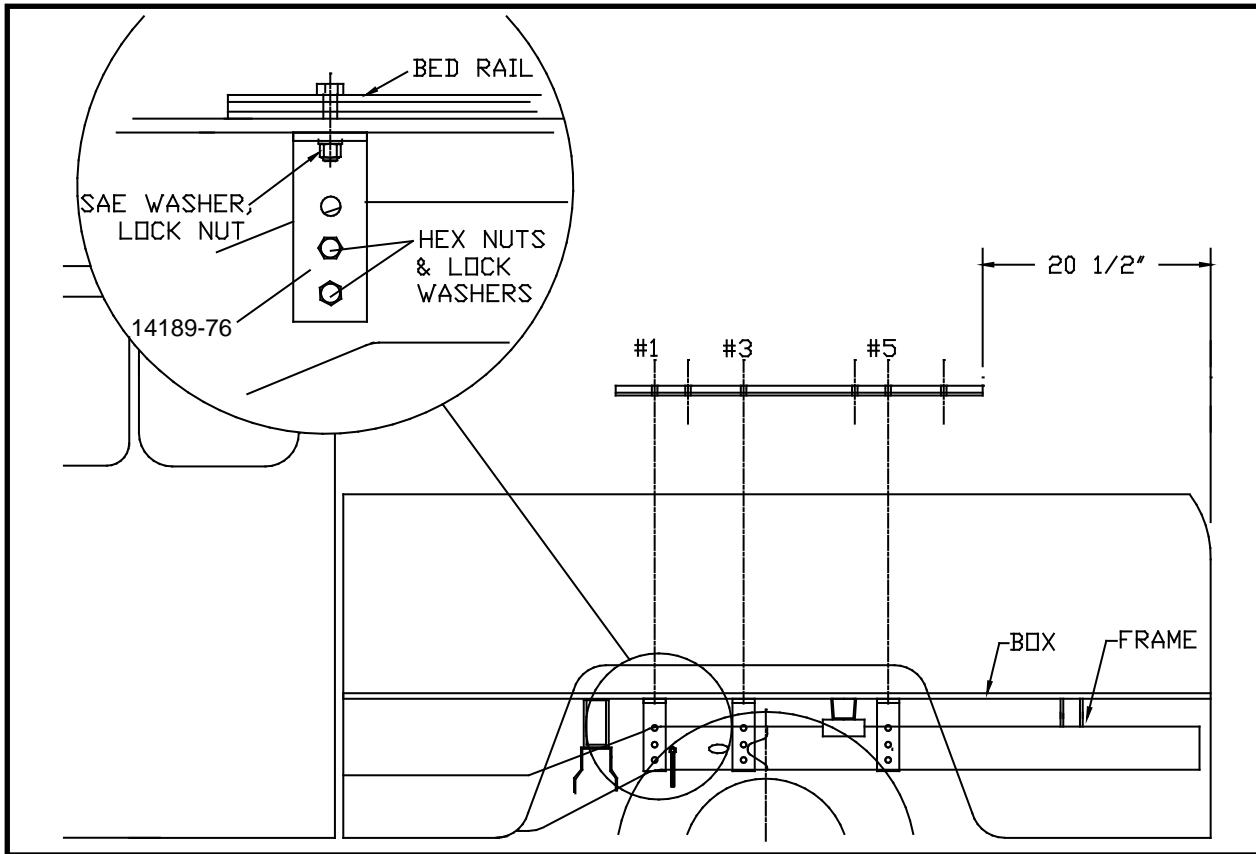


INSTALLATION

- Completely assemble hitch. See GENERAL INSTRUCTIONS and SAFETY supplied.
 - Set hitch into back of truck, center it side to side.
 - Measure 18 1/4" from back edge of truck box to edge of bed rail.
- First check for obstructions under box, then drill two 17/32" holes thru HOLE #1 of each bed rail.
 - Insert two 1/2" x 3" long hex bolts.
 - Drill thru HOLES #4 & #6 of each bed rail. Insert four remaining hex bolts.
- Under box, place standard frame brackets (14189-76) onto hex bolts (6 places).
 - Loosely install 1 1/2" square washers & lock nuts.
 - Press each bracket tight against frame member; tighten nuts snug against box.
- Pilot drill* and drill 1/2" holes into truck frame, at two places thru each frame bracket--BE CAREFUL OF ELECTRIC OR FLUID LINES behind frame members.
 - Brackets will be bolted onto frame by drilling frame and fishing knurl bolt (14266) through frame with fish wire (14238) and attach with hex nut (00083) and lock washer (00084) on outside of bracket.
 - TIGHTEN ALL BOLTS ACCORDING TO CHART ON FRONT PAGE.**

* To pilot drill: Use 1/2" drill bit or transfer punch to mark center. Drill thru with 1/4" drill.

DODGE: 2005 DAKOTA (6 1/2' BOX DOES NOT INCLUDE QUAD CAB)

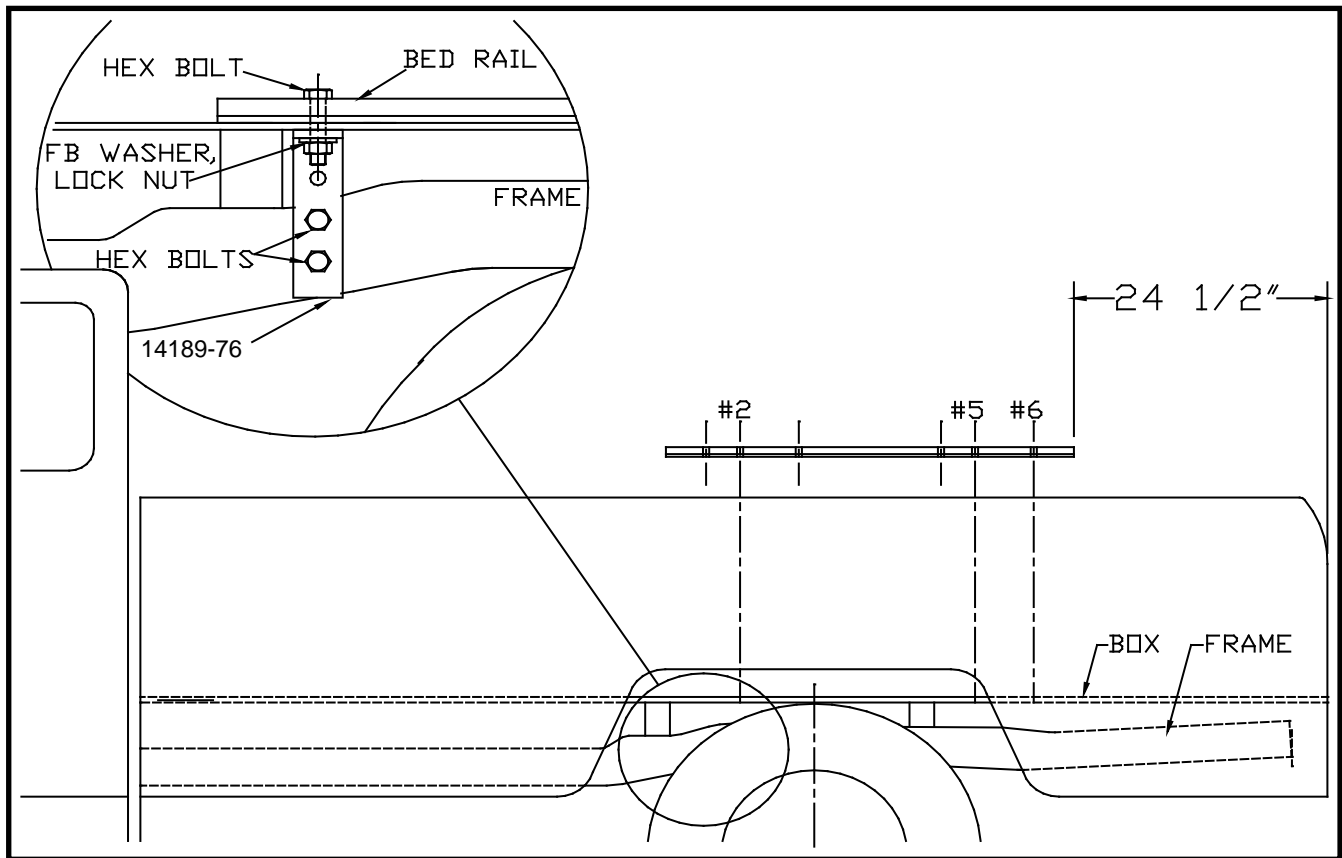


INSTALLATION

1. a. Completely assemble hitch. See GENERAL INSTRUCTIONS and SAFETY supplied.
 b. Set hitch into back of truck, center it side to side.
 c. Measure 20 1/2" from back edge of truck box to edge of bed rail.
 2. a. First check for obstructions under box, then drill two 17/32" holes thru HOLE #1 of each bed rail.
 b. Insert two 1/2" x 3" long hex bolts.
 c. Drill thru HOLES #3 & #5 of each bed rail. Insert four remaining hex bolts.
 3. a. Under box, place standard frame brackets (14189-76) onto hex bolts (6 places).
 b. Loosely install 1 1/2" square washers & lock nuts.
 c. Press each bracket tight against frame member; tighten nuts snug against box.
 4. a. Pilot drill* and drill 1/2" holes into truck frame, at two places thru each frame bracket--BE CAREFUL OF ELECTRIC OR FLUID LINES behind frame members.
 b. Brackets will be bolted onto frame by drilling frame and fishing knurl bolt (14266) through frame with fish wire (14238) and attach with hex nut (00083) and lock washer (00084) on outside of bracket.
 c. TIGHTEN ALL BOLTS ACCORDING TO CHART ON FRONT PAGE.
- * To pilot drill: Use 1/2" drill bit or transfer punch to mark center. Drill thru with 1/4" drill.

INSTALLATION

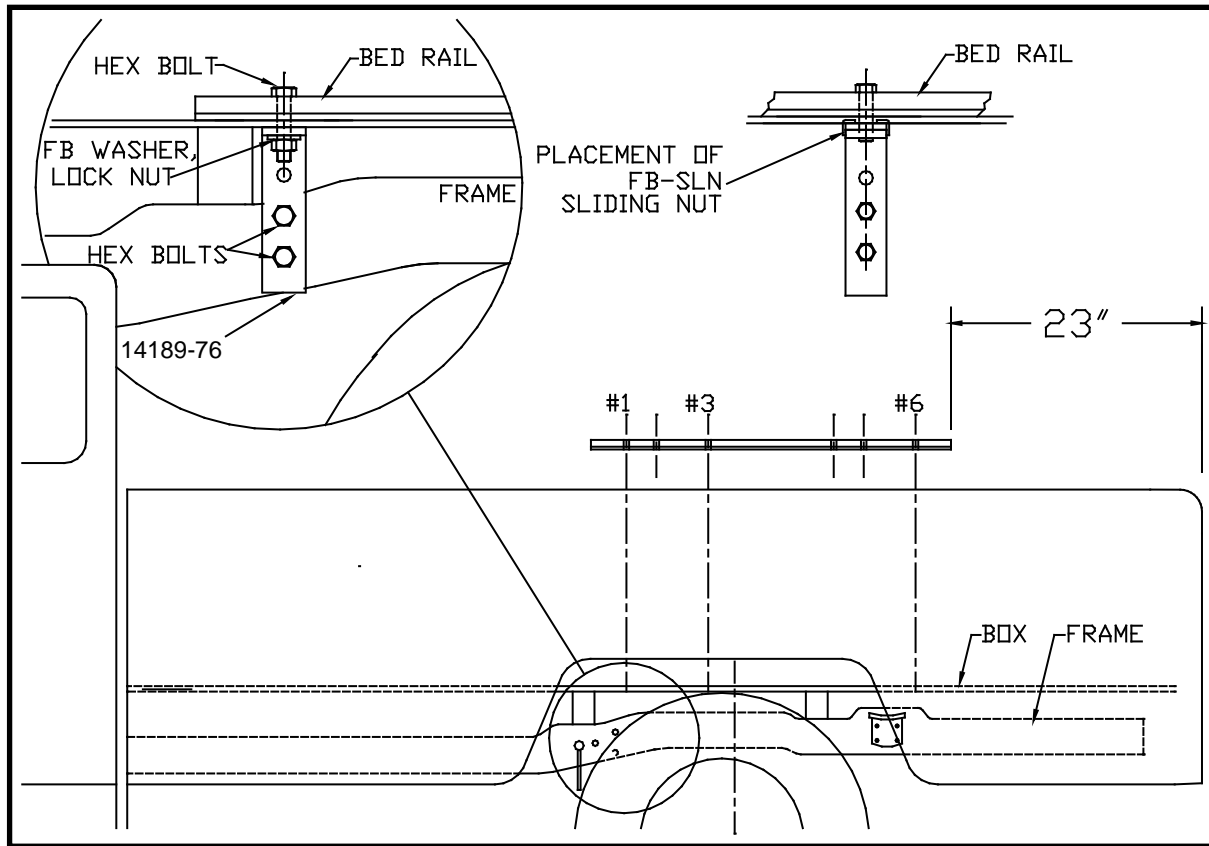
FORD: 1973-1988 F SERIES



INSTALLATION

1. a. Completely assemble hitch. See GENERAL INSTRUCTIONS and SAFETY supplied.
b. Set hitch into back of truck, center it side to side.
c. Measure 24 1/2" from back edge of truck box to edge of bed rail.
 2. a. First check for obstructions under box, then drill two 17/32" holes thru HOLE #2 of each bed rail.
b. Insert two 1/2" x 3" long hex bolts.
c. Drill thru HOLES #5 & #6 of each bed rail. Insert four remaining hex bolts.
 3. a. Under box, place standard frame brackets (14189-76) onto hex bolts (6 places).
b. Loosely install 1 1/2" square washers & lock nuts.
c. Press each bracket tight against frame member; tighten nuts snug against box.
 4. a. Pilot drill* and drill 1/2" holes into truck frame, at two places thru each frame bracket--BE CAREFUL OF ELECTRIC OR FLUID LINES behind frame members.
b. Brackets will be bolted onto frame by drilling frame and fishing knurl bolt (14266) through frame with fish wire (14238) and attach with hex nut (00083) and lock washer (00084) on outside of bracket.
c. TIGHTEN ALL BOLTS ACCORDING TO CHART ON FRONT PAGE.
- * To pilot drill: Use 1/2" drill bit or transfer punch to mark center. Drill thru with 1/4" drill.

FORD: 1992-1998 F350 (8' BOX) & 1997-1998 F250 HEAVY DUTY (6 1/2' & 8' BOX)



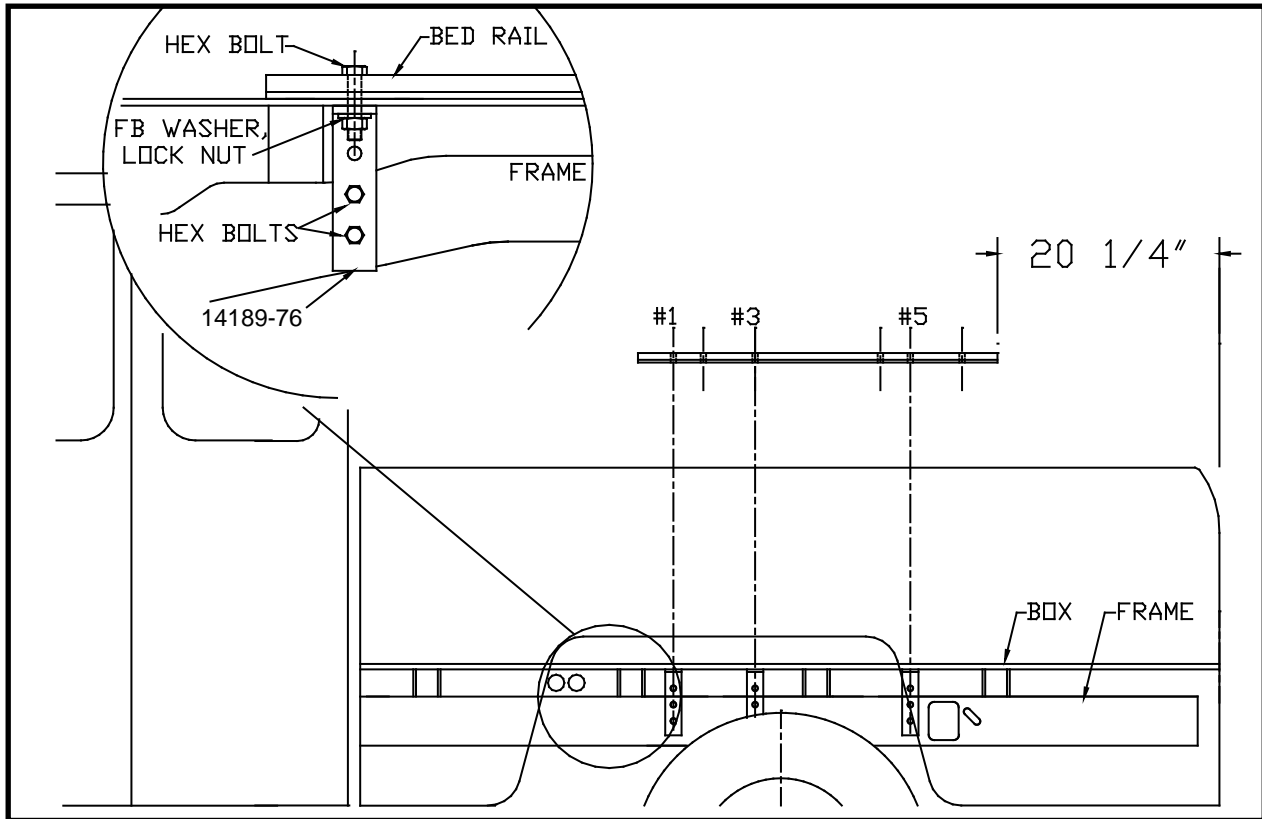
INSTALLATION

1. a. Completely assemble hitch. See GENERAL INSTRUCTIONS and SAFETY supplied.
 b. Set hitch into back of truck, center it side to side.
 c. Measure 23" from back edge of truck box to edge of bed rail.
2. a. First check for obstructions under box, then drill two 17/32" holes thru HOLE #1 of each bed rail.
 b. Insert two 1/2" x 3" long hex bolts.
 c. Drill thru HOLES #3 & #6 of each bed rail. Insert four remaining hex bolts.
3. a. Under box, place standard frame brackets (14189-76) onto hex bolts (6 places).
 b. Loosely install 1 1/2" square washers & lock nuts.
 c. Press each bracket tight against frame member; tighten nuts snug against box.
4. a. Pilot drill* and drill 1/2" holes into truck frame, at two places thru each frame bracket--BE CAREFUL OF ELECTRIC OR FLUID LINES behind frame members.
 b. Brackets will be bolted onto frame by drilling frame and fishing knurl bolt (14266) through frame with fish wire (14238) and attach with hex nut (00083) and lock washer (00084) on outside of bracket.
 c. TIGHTEN ALL BOLTS ACCORDING TO CHART ON FRONT PAGE.

* To pilot drill: Use 1/2" drill bit or transfer punch to mark center. Drill thru with 1/4" drill.

INSTALLATION

1999-2000 F250 "LIGHT DUTY" (6 1/2' & 8' BOX)

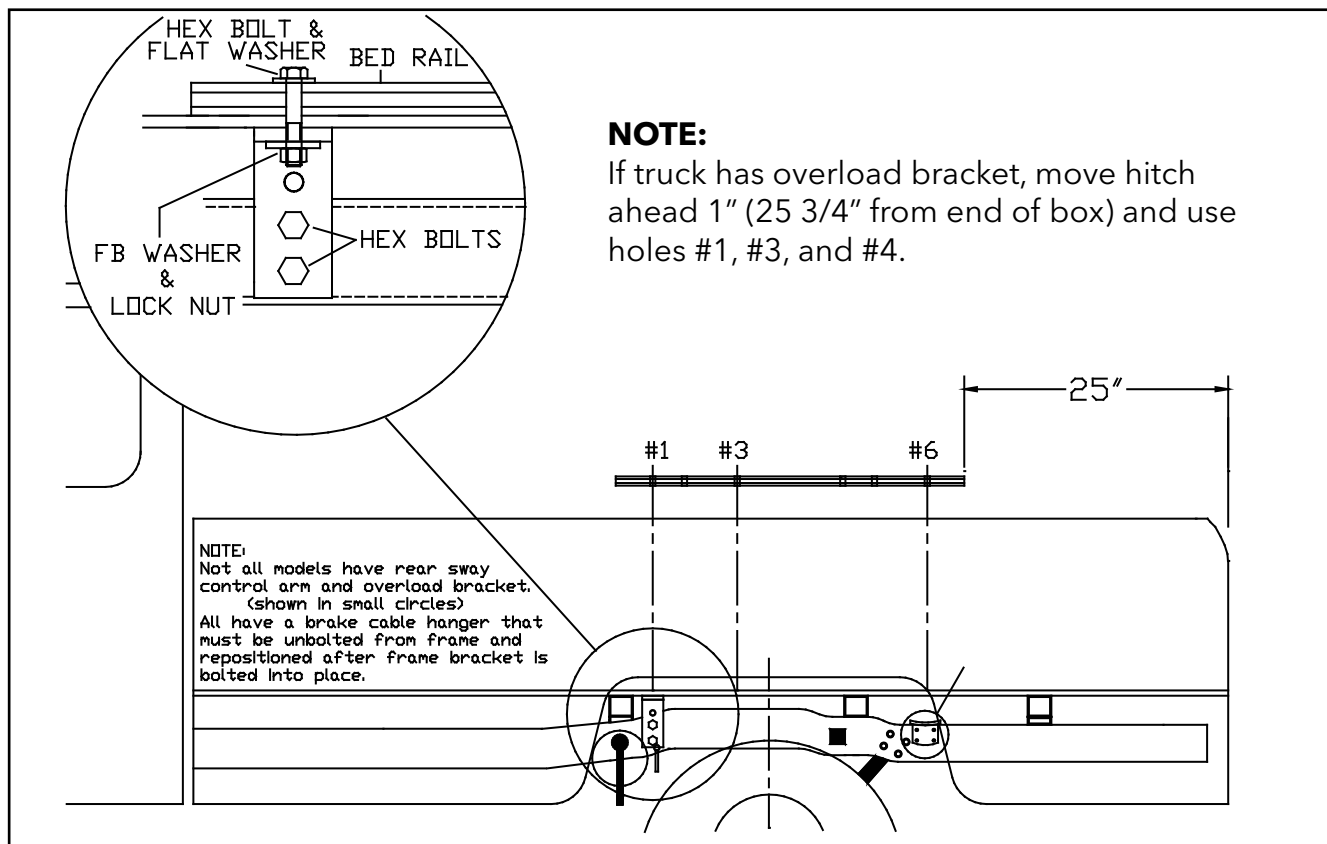


INSTALLATION

- Completely assemble hitch. See GENERAL INSTRUCTIONS and SAFETY supplied.
 - Set hitch into back of truck, center it side to side.
 - Measure 20 1/4" from back edge of truck box to edge of bed rail.
- Check underneath box at bolt hole locations for any obstructions (frame members, etc).
- Drill two 17/32" holes thru HOLE #1 of each bed rail.
 - Insert two 1/2" x 3" long hex bolts.
 - Drill thru HOLES #3 & #5 of each bed rail. Insert four remaining hex bolts.
- Under box, place standard frame brackets (14189-76) onto hex bolts (6 places).
 - Loosely install 1 1/2" square washers & lock nuts.
 - Press each bracket tight against frame member; tighten nuts snug against box.
- Pilot drill* and drill 1/2" holes into truck frame, at two places thru each frame bracket--BE CAREFUL OF ELECTRIC OR FLUID LINES behind frame members.
 - Brackets will be bolted onto frame by drilling frame and fishing knurl bolt (14266) through frame with fish wire (14238) and attach with hex nut (00083) and lock washer (00084) on outside of bracket.
 - TIGHTEN ALL BOLTS ACCORDING TO CHART ON FRONT PAGE.**

* To pilot drill: Use 1/2" drill bit or transfer punch to mark center. Drill thru with 1/4" drill.

FORD: 1999-2004 F250 & F350 SUPER DUTY (6 1/2' & 8' BOX)

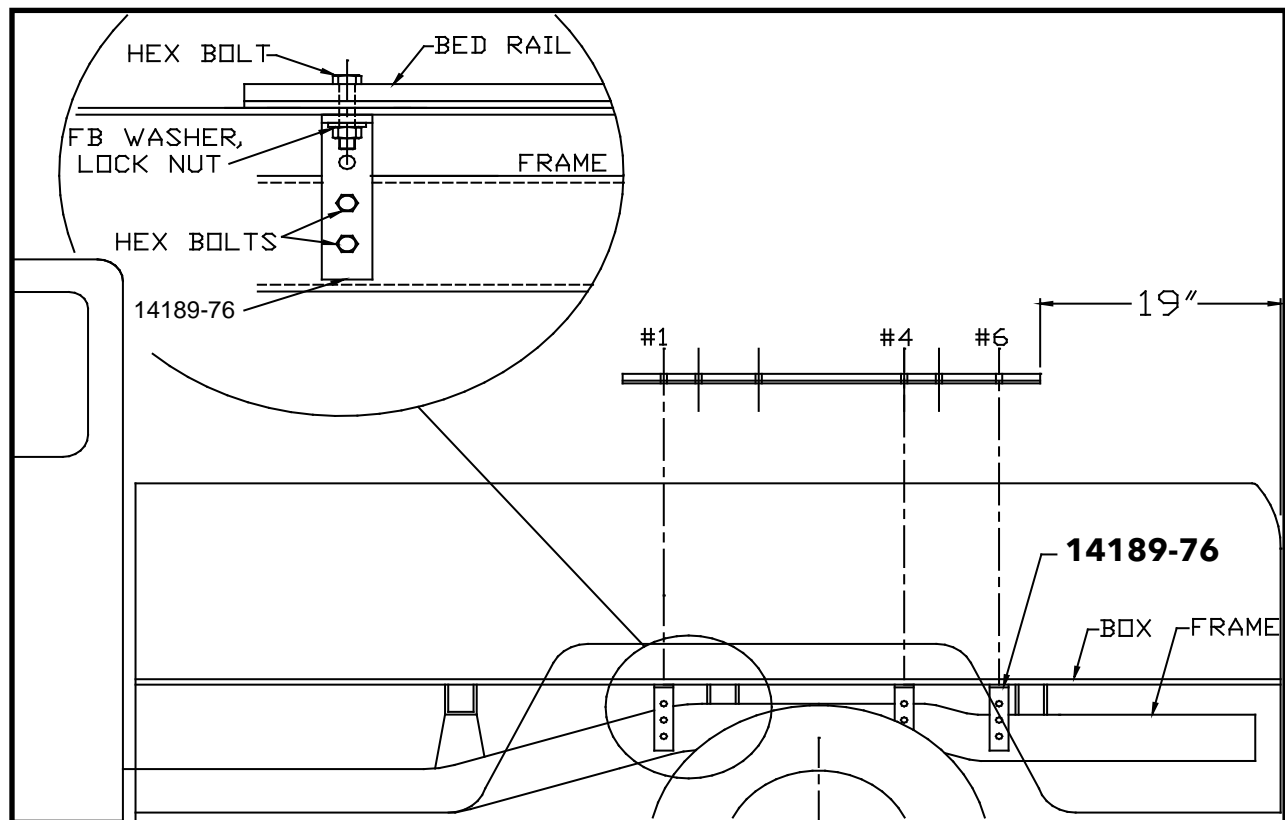


INSTALLATION

1. a. Completely assemble hitch. See GENERAL INSTRUCTIONS and SAFETY supplied.
b. Set hitch into back of truck, center it side to side.
c. Measure 25" from back edge of truck box to edge of bed rail.
 2. a. First check for obstructions under box, then drill two 17/32" holes thru HOLE #1 of each bed rail.
b. Insert two 1/2" x 3" long hex bolts.
c. Drill thru HOLES #3 & #6 (see note) of each bed rail. Insert four remaining hex bolts.
 3. a. Under box, place standard frame brackets (14189-76) onto hex bolts (6 places). Measure 25 1/2" for the 05-06 trucks and use holes 1, 3, & 4.
b. Loosely install 1 1/2" square washers & lock nuts.
c. Press each bracket tight against frame member; tighten nuts snug against box.
 4. a. Pilot drill* and drill 1/2" holes into truck frame, at two places thru each frame bracket--BE CAREFUL OF ELECTRIC OR FLUID LINES behind frame members.
b. Brackets will be bolted onto frame by drilling frame and fishing knurl bolt (14266) through frame with fish wire (14238) and attach with hex nut (00083) and lock washer (00084) on outside of bracket.
c. TIGHTEN ALL BOLTS ACCORDING TO CHART ON FRONT PAGE.
- * To pilot drill: Use 1/2" drill bit or transfer punch to mark center. Drill thru with 1/4" drill.

INSTALLATION

CHEVROLET/GMC: 1997 & EARLIER S-10 (6 1/2' BOX)



INSTALLATION

- Completely assemble hitch. See GENERAL INSTRUCTIONS and SAFETY supplied.
 - Set hitch into back of truck, center it side to side.
 - Measure 19" from back edge of truck box to edge of bed rail.
- First check for obstructions under box, then drill two 17/32" holes thru HOLE #1 of each bed rail.
 - Insert two 1/2" x 3" long hex bolts.
 - Drill thru HOLES #4 & #6 of each bed rail. Insert four remaining hex bolts.
- Under box, place standard frame brackets (14189-76) onto hex bolts.
 - Loosely install 1 1/2" square washers & lock nuts.
 - Press each bracket tight against frame member; tighten nuts snug against box.
- Pilot drill* and drill 1/2" holes into truck frame, at two places thru each frame bracket--BE CAREFUL OF ELECTRIC OR FLUID LINES behind frame members.
 - Brackets will be bolted onto frame by drilling frame and fishing knurl bolt (14266) through frame with fish wire (14238) and attach with hex nut (00083) and lock washer (00084) on outside of bracket.
 - TIGHTEN ALL BOLTS ACCORDING TO CHART ON FRONT PAGE.**

* To pilot drill: Use 1/2" drill bit or transfer punch to mark center. Drill thru with 1/4" drill.