



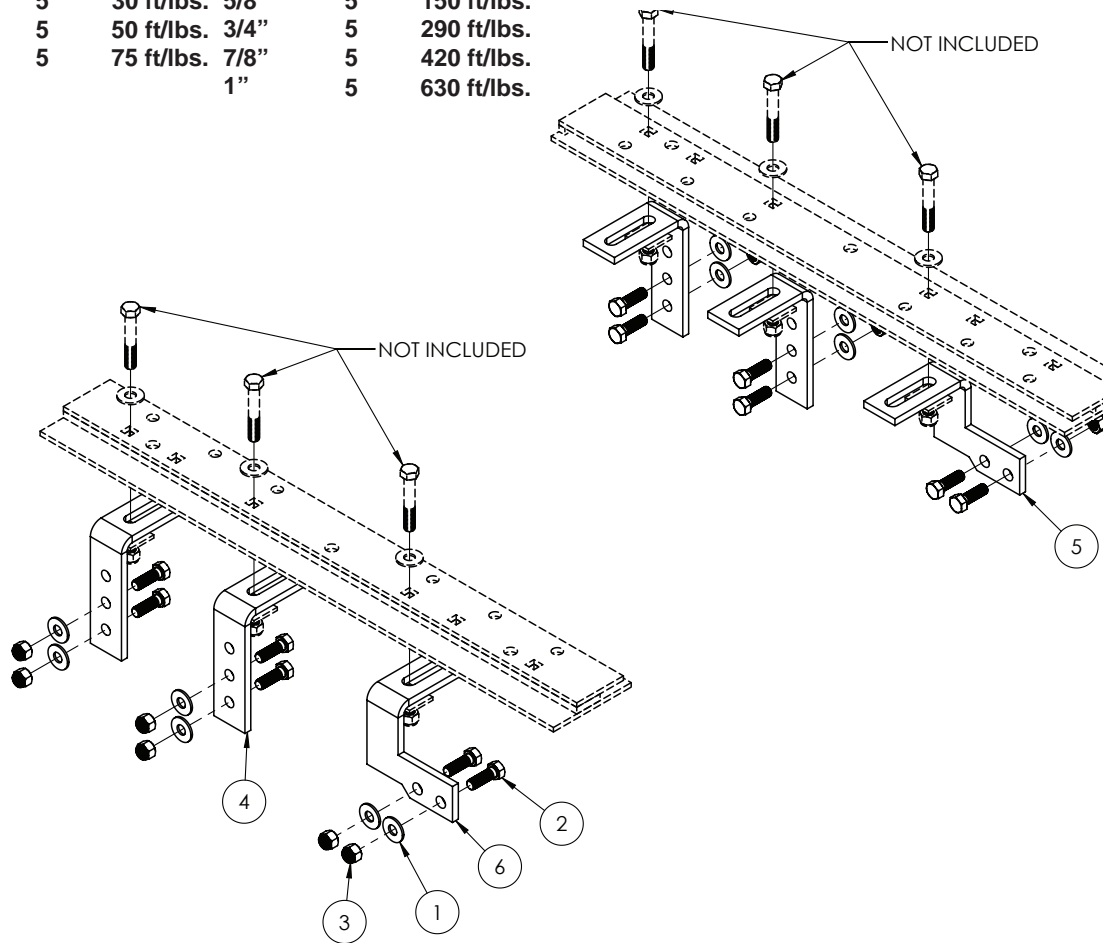
Ford

BOLT TORQUE SPECIFICATIONS

FRAME BRACKET

STANDARD BOLTS:

Size	Grade	Torque	Size	Grade	Torque
5/16"	5	18 ft/lbs.	9/16"	5	115 ft/lbs.
3/8"	5	30 ft/lbs.	5/8"	5	150 ft/lbs.
7/16"	5	50 ft/lbs.	3/4"	5	290 ft/lbs.
1/2"	5	75 ft/lbs.	7/8"	5	420 ft/lbs.
			1"	5	630 ft/lbs.



8553001 PARTS LIST

REF. NO.	PART NO.	QTY.	DESCRIPTION
1.	00085	12	1/2" Flat Washer
2.	01254	12	1/2" -NC x 1 1/2" Hex Bolt Gr.5
3.	02178	12	1/2" -NC Nylon Lock Nut
4.	14189-76	4	411 Frame Bracket
5.	14236-76	1	Passenger Side Frame Bracket
6.	14237-76	1	Drive Side Frame Bracket

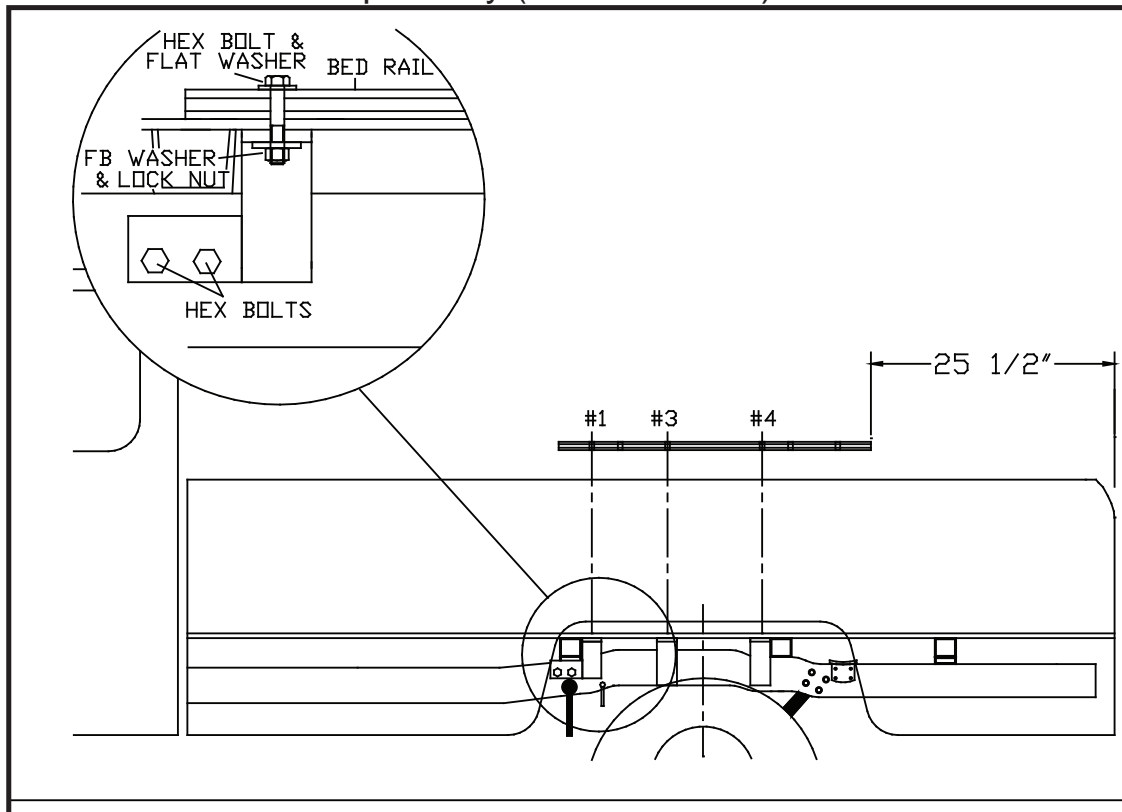
Please order replacement parts by **PART NO.** and **DESCRIPTION.**

ASSEMBLY
OPERATION
REPLACEMENT PARTS

READ complete manual CAREFULLY
BEFORE attempting operation.

Doing Our Best to Provide You the Best

FORD: 2005-2010 F250/350 Super Duty (6 1/2' & 8' Box)
2008-2010 F450 Super Duty (6 1/2' & 8' Box)



INSTALLATION

1. a. Completely assemble hitch. See GENERAL INSTRUCTIONS and SAFETY supplied.
b. Set hitch into back of truck, center it side to side.
c. Measure 25 1/2" from back edge of truck box to back edge of bed rail.
2. Check underneath box at bolt hole locations for any obstructions (frame members, etc.).
3. a. Drill two 17/32" holes thru HOLE #1, each bed rail.
b. Insert two 1/2" x 3" (04073) long hex bolts.
c. Drill thru HOLES #3 and #4, each bed rail. Insert four 1/2" x 3" hex bolts.
4. a. Under box, place (14189-76) frame brackets onto hex bolts (four places), (14236-76) frame bracket (Hole #1), and (14237-76) frame bracket (Hole #1).
b. Loosely install frame washer (14235-95), 1/2" flat washer (00085), and 1/2" Nylon lock nut (02178).
c. Press each bracket tight against frame member, tighten nuts snug against box.
5. a. Pilot drill* and drill 1/2" hole into truck frame, at two places thru holes in each frame bracket -- BE CAREFUL OF ELECTRIC OR FLUID LINES behind frame members.
b. Fasten brackets with 1/2" x 1 1/2" (01254) bolts, flat washers (00085), and nuts (02178).
c. **TIGHTEN ALL BOLTS ACCORDING TO CHART ON FRONT PAGE.**

* To pilot drill: Use 1/2" drill bit or transfer punch to mark center. Drill thru with 1/4" drill.

Demco