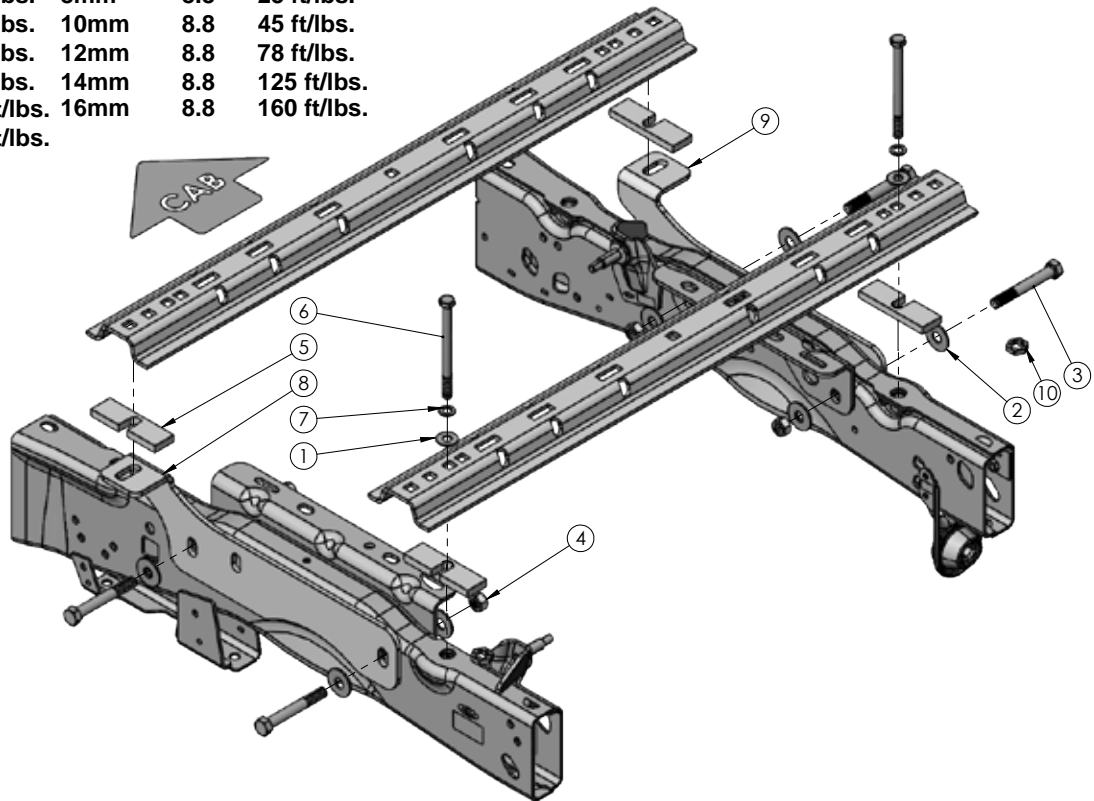


FRAME BRACKET 8552031

Ford F250/F350 Super Duty 6-1/2' & 8' Box

BOLT TORQUE SPECIFICATIONS

STANDARD BOLTS			METRIC BOLTS		
Size	Grade	Torque	Size	Grade	Torque
5/16"	5	18 ft/lbs.	8mm	8.8	23 ft/lbs.
3/8"	5	30 ft/lbs.	10mm	8.8	45 ft/lbs.
7/16"	5	50 ft/lbs.	12mm	8.8	78 ft/lbs.
1/2"	5	75 ft/lbs.	14mm	8.8	125 ft/lbs.
5/8"	5	150 ft/lbs.	16mm	8.8	160 ft/lbs.
3/4"	5	290 ft/lbs.			



ITEM	PART #	QTY	DESCRIPTION
1	00085	2	WASHER, FLAT .50
2	00477	8	WASHER, FLAT .625
3	02434	4	BOLT, .625NC X 4.50 HEX GR.5
4	02587	4	NUT, .625NC NYLON LOCK
5	15839-95	4	UL BASE SHIM
6	15840	2	BOLT, 14MM X 2MM X 160MM GR.8.8 HEX
7	15841	2	WASHER, SPRING LOCK 14MM
8	15842-76	1	DRIVER BRACKET FRAME MOUNT
9	15843-76	1	PASSENGER FRAME BRACKET
10	15844	2	BOX BOLT ADAPTOR
11	15367	10'	VINYL 5" (not shown)

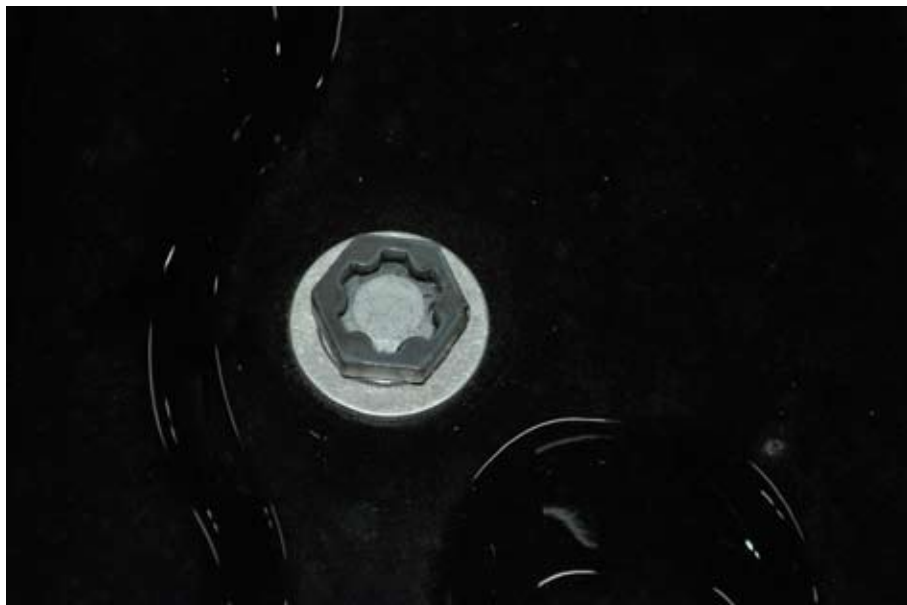
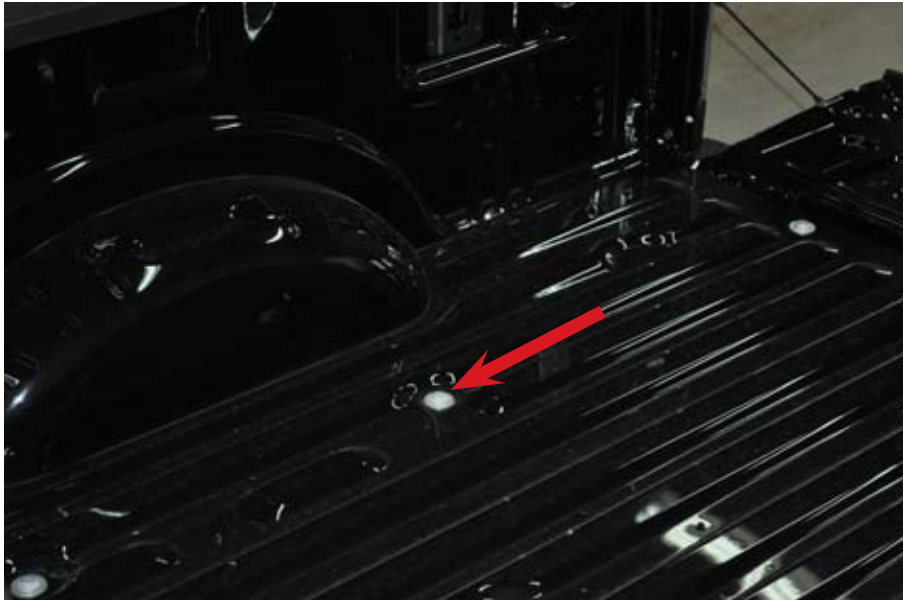
Please order replacement parts by PART NO. and DESCRIPTION.

CAUTION: Do not install base rails over plastic bed liners. Plastic bed liners must be cut out of the way. Rails may be installed on spray in liners.

NOTE: Consult spray liner installer for recommended curing time.

NOTE: All metal surfaces that come in with contact the aluminum body need to have vinyl placed in between to prevent corrosion.

1. Remove rear inner wheel well inserts if equipped.
2. Inside of the box, remove 2 box bolts, second row from the back of the box (34 1/2" from back of box to center of bolt) see below picture. Use Torx Plus #24 EP or supplied box bolt adapter. **NOTE:** If inside of box has spray in bed liner (factory or after market), liner material must be removed from bolt head before using socket or box bolt adapter. Use 1-1/8" socket to remove bolts. Bolts will not be reused. **NOTE:** Using 1/2" drive air gun works best.



-
3. Apply vinyl #15367 to each leg of the rail and box spacer and place them in the box over the factory holes in the box. Using 14mm x 160mm bolts, 14mm lockwashers and 1/2" flatwashers placed in the third from the outside mounting hole in the rail on each side. Make sure the rail is parallel to the back of the pickup box and tighten according to the chart specifications on the front page. See picture below. **NOTE:** foam applied in picture to show where vinyl is to be applied.



4. Apply vinyl to the front rail and box spacers. Place front rail into the box and place the hitch in the rails.
5. Make sure the front and rear rails are parallel to each other. Drill a 5/8" hole on each side using the first outside mounting hole (look below the box before drilling to make sure nothing is in the way of the drill bit). Remove the front rail and hitch. Using some paint, touch up the drilled hole to prevent corrosion. Reinstall front rail and hitch. Make sure the rail is once again parallel to the rear rail.
6. Attach drivers and passenger frame brackets against frame using existing holes in frame. Use 5/8" x 4-1/2" bolts and 5/8" flatwashers, 1 washer per side of the frame and 5/8" nylon locknut. Push bracket up so mounting tab is tight with the bottom of the box and tighten bolts.
7. Using the supplied bolts from the 6071 rail kit, install the bolts and tighten to the chart on front page. **NOTE:** Included in this kit are 1/2" thick UL base shims. Use these and not shims from 6071 kit because truck box floor has deeper corrugation.
8. Reinstall the rear wheel well inserts if equipped.