



Dodge 1500
5 1/2', 6 1/2' & 8' Boxes
No Air Suspension

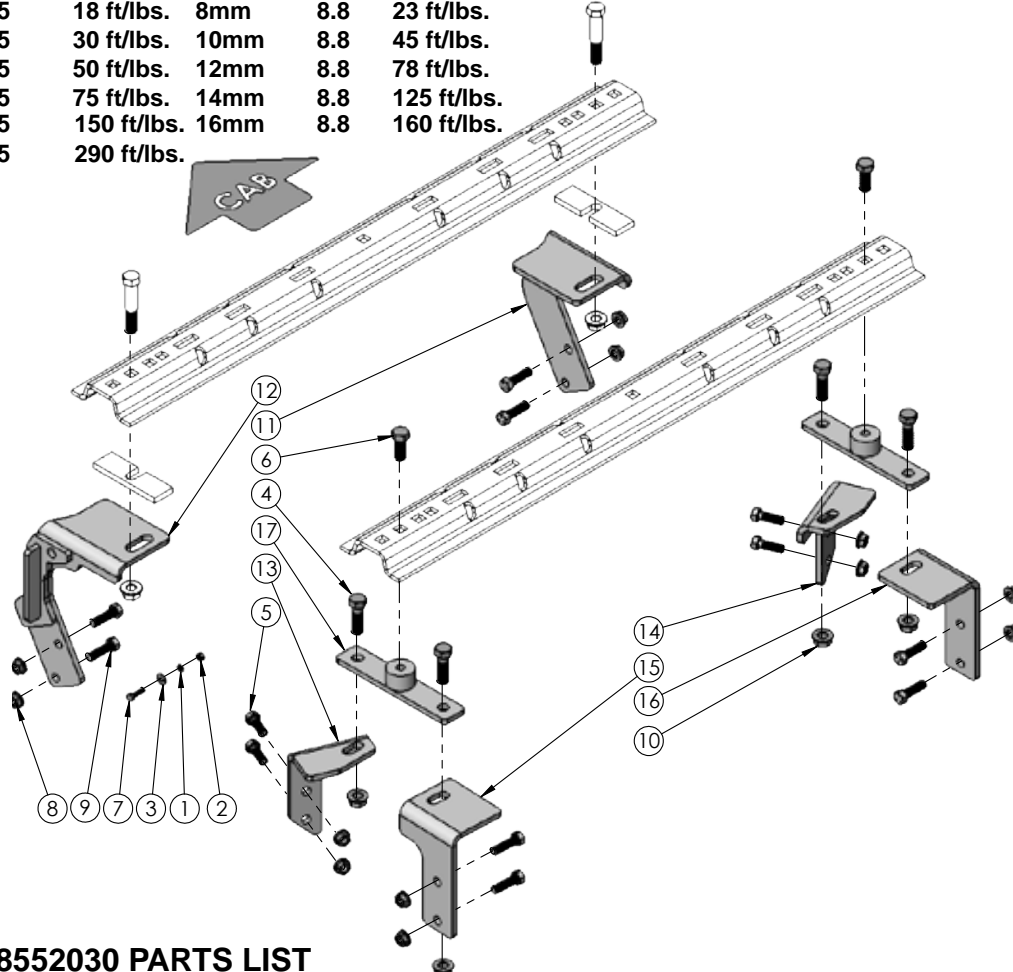
5/18
HJ32030, Rev 6



BOLT TORQUE SPECIFICATIONS

STANDARD BOLTS			METRIC BOLTS		
Size	Grade	Torque	Size	Grade	Torque
5/16"	5	18 ft/lbs.	8mm	8.8	23 ft/lbs.
3/8"	5	30 ft/lbs.	10mm	8.8	45 ft/lbs.
7/16"	5	50 ft/lbs.	12mm	8.8	78 ft/lbs.
1/2"	5	75 ft/lbs.	14mm	8.8	125 ft/lbs.
5/8"	5	150 ft/lbs.	16mm	8.8	160 ft/lbs.
3/4"	5	290 ft/lbs.			

FRAME BRACKET



8552030 PARTS LIST

ITEM	PART #	QTY	DESCRIPTION	ITEM	PART #	QTY	DESCRIPTION
1	00057	1	WASHER, .25 SPRING LOCK	11	14512-76	1	FRONT BRACKET PASSENGER
2	00062	1	NUT .25NC HEX	12	15397-76	1	DRIVER SIDE UL MTG BRKT
3	00214	1	WASHER, FLAT, .25	13	15785-76	1	MIDDLE DRIVER BRACKET
4	00290	4	BOLT .625NC X 2.00 GR5 HEX	14	15786-76	1	MIDDLE PASSENGER BRACKET
5	01254	4	BOLT, .50 NC X 1.50 GR.5 HEX	15	15787-76	1	REAR DIVER BRACKET
6	04051	2	BOLT, .625 NC X 1.50 HEX HEAD	16	15788-76	1	REAR PASSENGER BRACKET
7	04055	1	.25-20NC X 1 GD5 HEX	17	15789-76	2	REAR SPACER
8	10379	12	1/2" UNC FLANGED NUT	-	14238	1	FISH WIRE 1/2" (NOT SHOWN)
9	14266	8	.50NC X 1.75 KNURLED NECK	-	12329	2	LOCTITE (NOT SHOWN)
10	14340	4	5/8" UNF FLANGED WHEEL NUT				

Please order replacement parts by PART NO. and DESCRIPTION.

Please order replacement parts by PART NO. and DESCRIPTION.

ASSEMBLY
OPERATION
REPLACEMENT PARTS

READ complete manual CAREFULLY
BEFORE attempting operation.

Doing Our Best to Provide You the Best

Installation Instructions

1. Jack rear of truck up and remove tires.



2. Remove two plastic push fasteners from bottom of box as shown in picture. **NOTE:** Not applicable on all models. Repeat on other side.



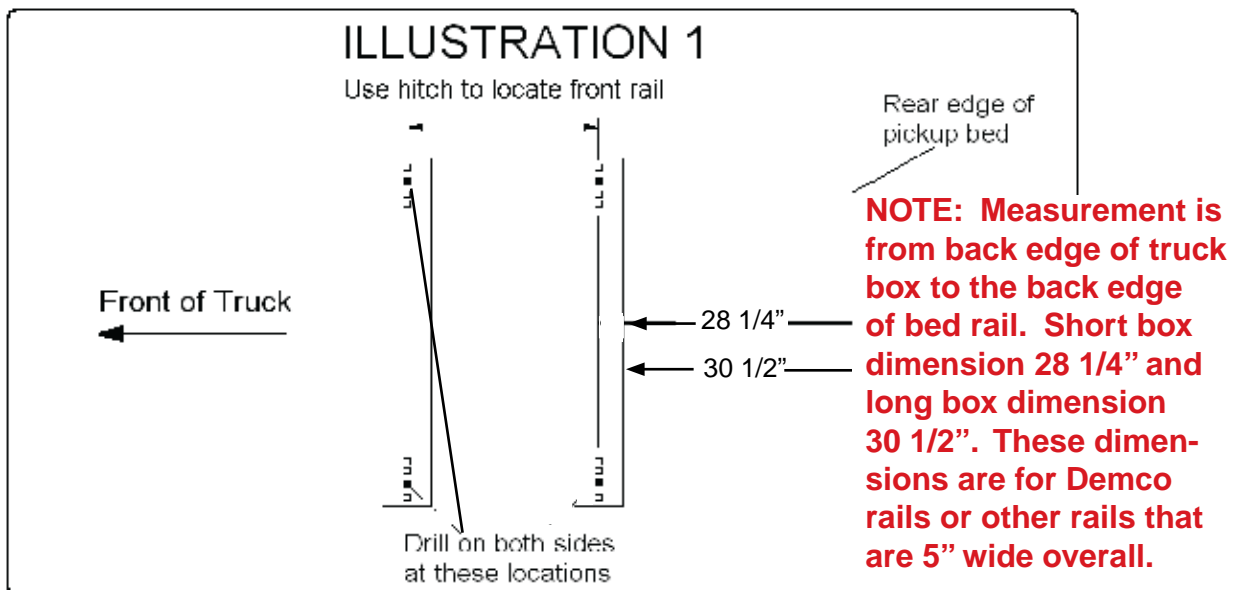
3. Remove two screws from plastic trim behind each wheel as shown.



4. Remove remaining nine screws from each wheel well insert.



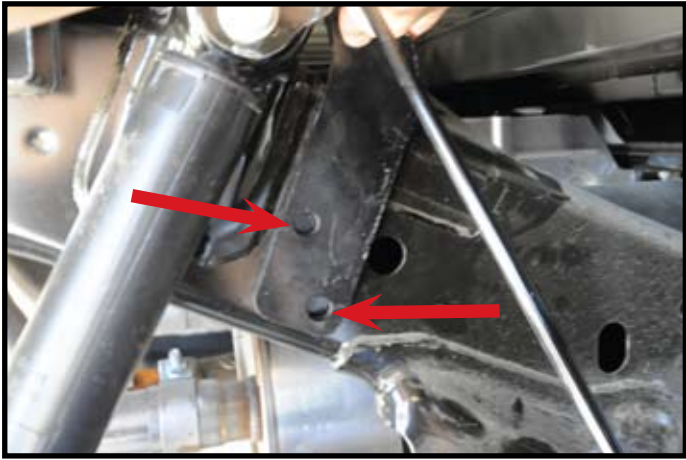
5. Bolt on rear spacer brackets on the end of one UL rail (bed rail) using 5/8" x 1 1/2" Gr.5 bolt. Apply included **LOCTITE**® to these bolts and tighten making sure that brackets are square with the UL rail. **NOTE:** Brackets bolt to the second hole from the end as displayed in above picture.. This rail will be the back rail you will measure to in the next step.



6. Fully assemble the 5th wheel hitch on a flat, level surface and pin into the base rails (assembly instructions come with hitch components). **Place assembled hitch in truck bed between the wheel wells, center it side to side and measure 28 1/4" from back edge of truck box to the back edge of bed rail for 5 1/2' & 6 1/2' boxes and 30 1/2" for 8' box.**
7. First check for obstructions under box, then drill 5/8" holes thru the second square hole from the end of front rail and two holes on each side of rear rail brackets that were bolted in step 5.
8. Put 3 1/2" bolts in front rail and 5/8" x 2" Gr.5 bolts into rear rail brackets; two on each side.



9. Slide rear frame brackets over to 2" bolt and use 5/8" serrated head nut. Clamp bracket to frame loosely and tighten bolt from above. **NOTE:** Some models have ground stud located on drivers side where rear frame bracket mounts. Remove wire and grind stud off of frame. Make sure wiring is behind frame bracket and relocate wire terminal by using 1/4" x 1" bolt, 1/4" flat washer, 1/4" lockwasher and 1/4" hex nut. Use frame access hole to install bolt. **NOTE:** Sand or grind paint off of frame before installing ground terminal.
10. Repeat above directions for middle frame bracket. Clamp loosely to coil tower framework and tighten.



- 11.** Slide front frame brackets to outside of frame and mount front bed rail while keeping frame bracket tight to frame. Tighten all bed rail bolts according to chart on front page. Passenger side shown.
- 12.** On drivers side, loosen or remove brace rod so front frame bracket can be installed. If equipped with gas engine, remove wiring holders so frame bracket can lay flat to frame.
- 13.** Using the holes in the frame brackets, drill $17/32$ " holes in the side of the frame and coil tower. The front frame brackets and the rear frame brackets will then be attached using $1/2$ " x $1\ 3/4$ " hex knurled bolts and flange nuts, that are fished through an access hole in the frame using fish wire provided in the kit. The middle bracket will use $1/2$ " x $1\ 1/2$ " Gr.5 bolt and $1/2$ " washer and $1/2$ " serrated head nut.. Tighten all frame bracket bolts according to the chart on front page. Passenger front bracket shown.



- 14.** Completed install.