



Dodge

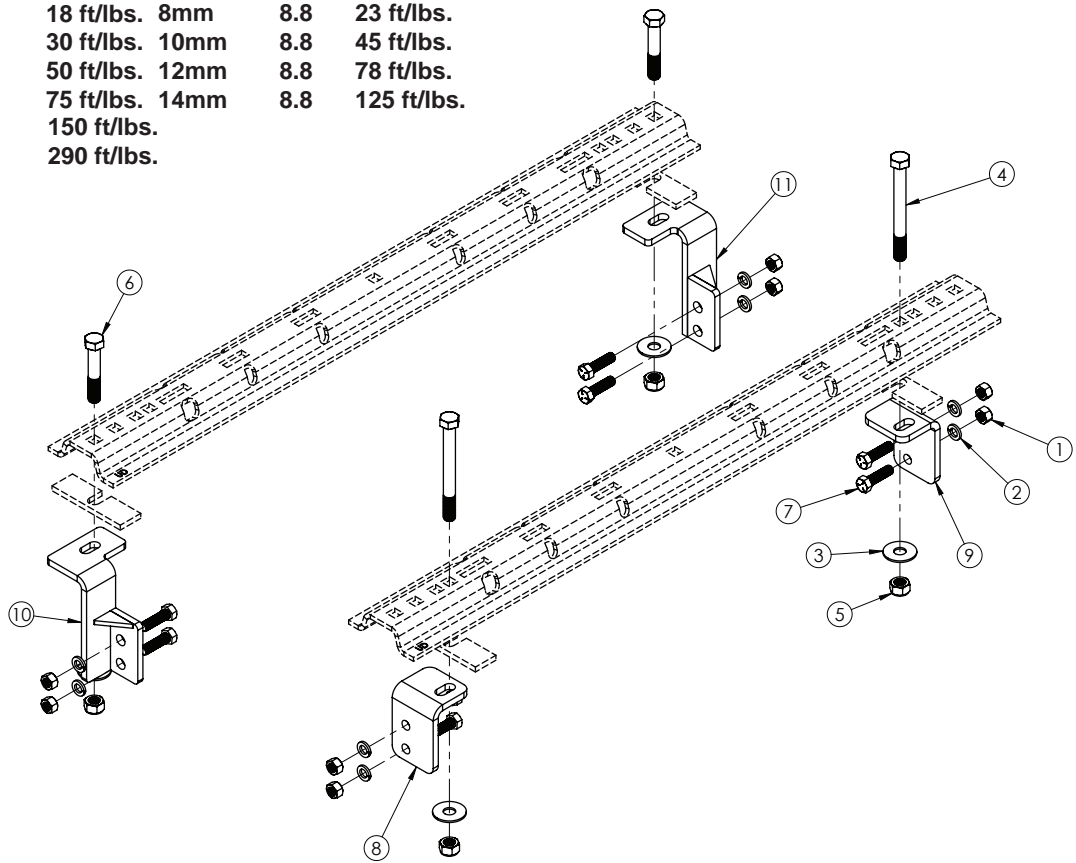
4-13  
HJ32017, Rev 1



**BOLT TORQUE SPECIFICATIONS**

STANDARD BOLTS			METRIC BOLTS		
Size	Grade	Torque	Size	Grade	Torque
5/16"	5	18 ft/lbs.	8mm	8.8	23 ft/lbs.
3/8"	5	30 ft/lbs.	10mm	8.8	45 ft/lbs.
7/16"	5	50 ft/lbs.	12mm	8.8	78 ft/lbs.
1/2"	5	75 ft/lbs.	14mm	8.8	125 ft/lbs.
5/8"	5	150 ft/lbs.			
3/4"	5	290 ft/lbs.			

# FRAME BRACKET



**8552017 PARTS LIST**

REF. NO.	PART NO.	QTY.	DESCRIPTION
1.	00083	8	1/2" Nut
2.	00084	8	1/2" Lock Washer
3.	00477	4	5/8" Flat Washer
4.	01962	2	5/8" x 6" Hex Bolt Gr.5
5.	02587	4	5/8" Nylon Lock Nut
6.	05103	2	5/8" x 3 1/2" Hex Bolt Gr.5
7.	14266	8	1/2" x 1 3/4" Hex Bolt Gr.5
8.	14288-76	1	Frame Bracket D35 Driver Side
9.	14289-76	1	Frame Bracket C35 Passenger Side
10.	14298-76	1	Frame Bracket A3500 Front Driver Side
11.	14299-76	1	Frame Bracket A3500 Front Passenger Side
12.	14238	1	1/2" Fish Wire (not shown)

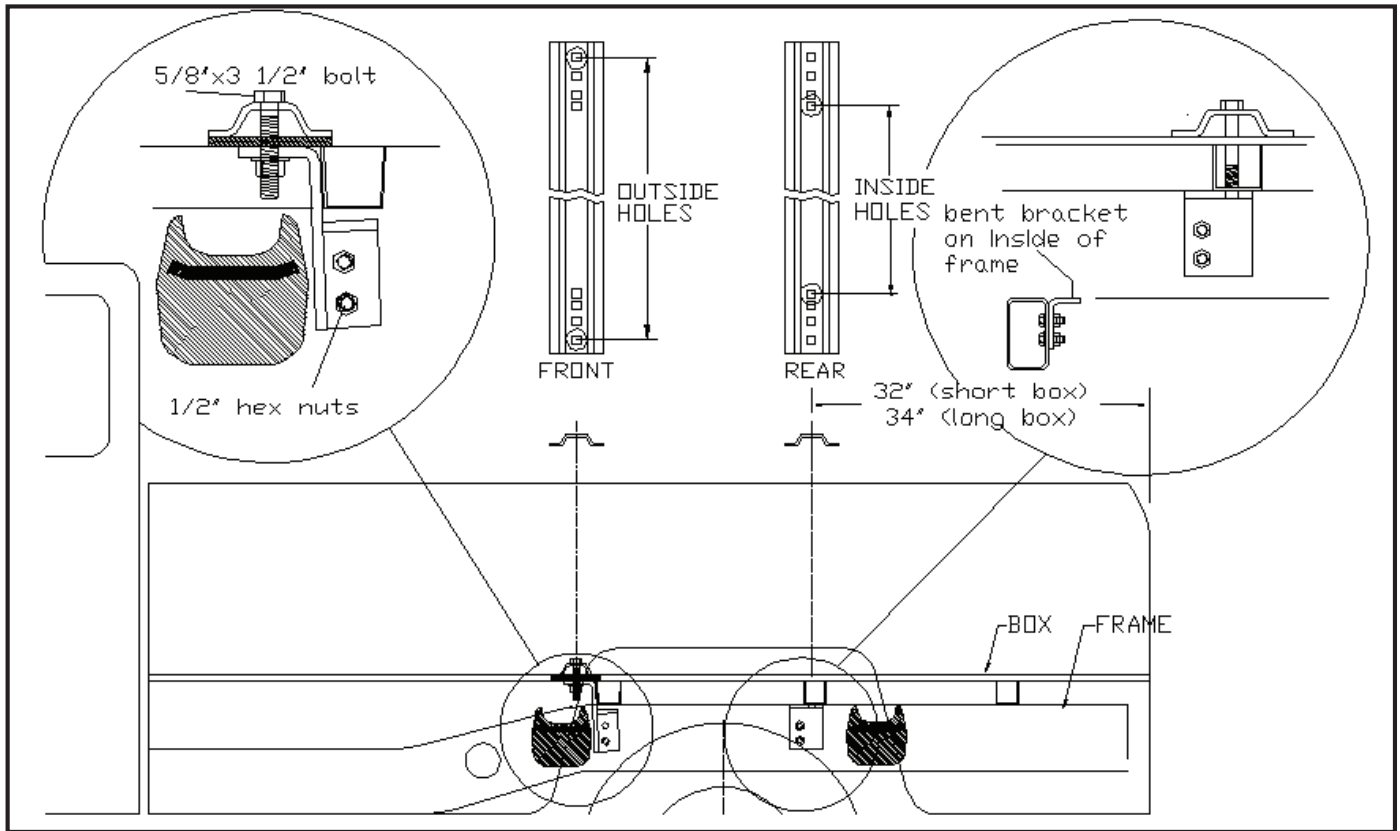
Please order replacement parts by **PART NO.** and **DESCRIPTION.**

ASSEMBLY  
OPERATION  
REPLACEMENT PARTS

**READ** complete manual *CAREFULLY*  
*BEFORE* attempting operation.

Doing Our Best to Provide You the Best

**DODGE: 2003-2012 Ram 3500 (4x2 only) (6 1/2' & 8' Box including Mega Cab)  
HIJACKER HITCH: 24-UL**



**INSTALLATION**

1.
  - a. Completely assemble hitch. See GENERAL INSTRUCTIONS and SAFETY.
  - b. Set hitch into back of truck, center it side to side.
  - c. Measure 32" (short box) or 34" (long box) from back edge of truck box to square hole center in rear bed rail.
2. Check underneath box at bolt hole locations from any obstruction (frame members, etc)
3.
  - a. Drill two 5/8" holes thru FRONT BED RAIL, OUTSIDE POSITION, as shown. Drop in two 5/8" x 3 1/2" bolts (05103).
  - b. Drill two hole in REAR BED RAIL, INSIDE POSITION. Drop in two 5/8" x 6" bolts (01962). \*\*You will have to use the two 5/8" x 6" long bolts to go through cross member. Frame bracket will mount inside frame facing inwards as shown in circled close up.
4.
  - a. Under box, loosely install frame brackets, SAE flat washer (00477) and nylon lock nuts (02587) onto 5/8" bolts (4 places).
5.
  - a. Use frame brackets A3500DS (14298-76) and A3500PS (14299-76) on front base rail #1 and frame brackets C35 (14289) and D35 (14288) on rear base rail #2. Brackets will be bolted onto frame by drilling frame and knurled bolt (14266) through frame with a fish wire (14238) and attach with 1/2" nut (00083) and 1/2" lock washer (00084) on outside of bracket. Front brackets will use existing frame hole under the crossmember for the bottom hole in bracket so only one hole need be drilled. There are access holes just behind the rear crossmember. These can be used to fish the knurled bolt through. Use a 1/2" drill for holes.
6.
  - a. BE CAREFUL OF ELECTRICAL OR FLUID LINES behind frame members.
  - b. Fasten brackets with 1/2" x 1 3/4" knurled bolts, nuts and lock washers for all brackets.
  - c. TIGHTEN ALL BOLTS ACCORDING TO CHART ON FRONT PAGE.

# IMPORTANT

## Dodge 3500 4x2 short box trucks only

There is a box alignment bracket located directly under the front cross-member on all 2003-08 Dodge 3500 short box 2 wheel drive trucks. This bracket will have to be removed to enable bolting on the front mounting brackets for your fifth wheel hitch. Below describes how to do this. This bracket is not attached to the frame in any way and serves no purpose other than to align the box on the frame during assembly.

