

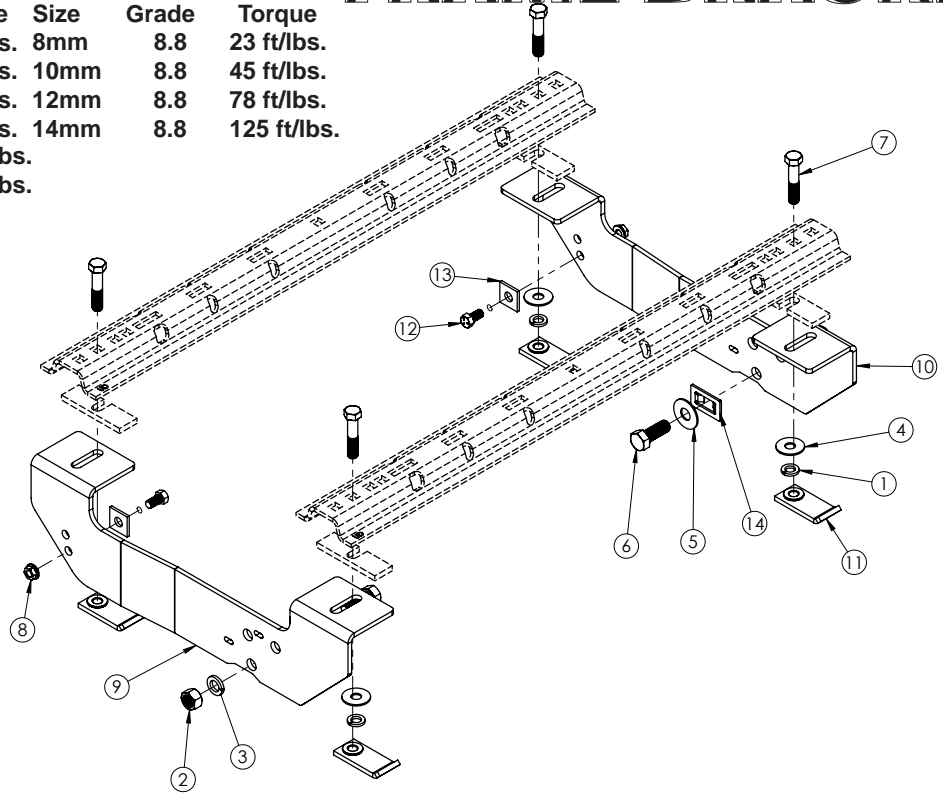


Chevrolet/GMC

BOLT TORQUE SPECIFICATIONS

STANDARD BOLTS			METRIC BOLTS		
Size	Grade	Torque	Size	Grade	Torque
5/16"	5	18 ft/lbs.	8mm	8.8	23 ft/lbs.
3/8"	5	30 ft/lbs.	10mm	8.8	45 ft/lbs.
7/16"	5	50 ft/lbs.	12mm	8.8	78 ft/lbs.
1/2"	5	75 ft/lbs.	14mm	8.8	125 ft/lbs.
5/8"	5	150 ft/lbs.			
3/4"	5	290 ft/lbs.			

FRAME BRACKET



8552012 PARTS LIST

REF. NO.	PART NO.	QTY.	DESCRIPTION
1.	00248	4	5/8" Lock Washer
2.	00253	2	3/4" Hex Nut
3.	00254	2	3/4" Lock Washer
4.	00477	4	5/8" Flat Washer
5.	00492	2	3/4" Flat Washer
6.	01235	2	3/4" x 2" Hex Bolt Gr.5
7.	04215	4	5/8" x 3" Hex Bolt Gr.5
8.	10379	2	1/2" Serrated Flange Nut
9.	14183-76	1	Frame Bracket Driver Side
10.	14184-76	1	Frame Bracket Passenger Side
11.	14251-95	4	Plated Nut Bar
12.	14754	2	1/2" x 1" Hex Bolt Knurled Gr.5
13.	14283-76	2	3/16" Spacer Plate
14.	14290-76	2	Alignment Spacer
15.	14238	1	1/2" Fish Wire (not shown)
16.	02875-95	2	7/8" Bushing (not shown)
17.	07597	2	6mm Flat Washer (not shown)
18.	14384	2	6mm x 1mm x 55mm Bolt Gr.8 (not shown)

Please order replacement parts by PART NO. and DESCRIPTION.

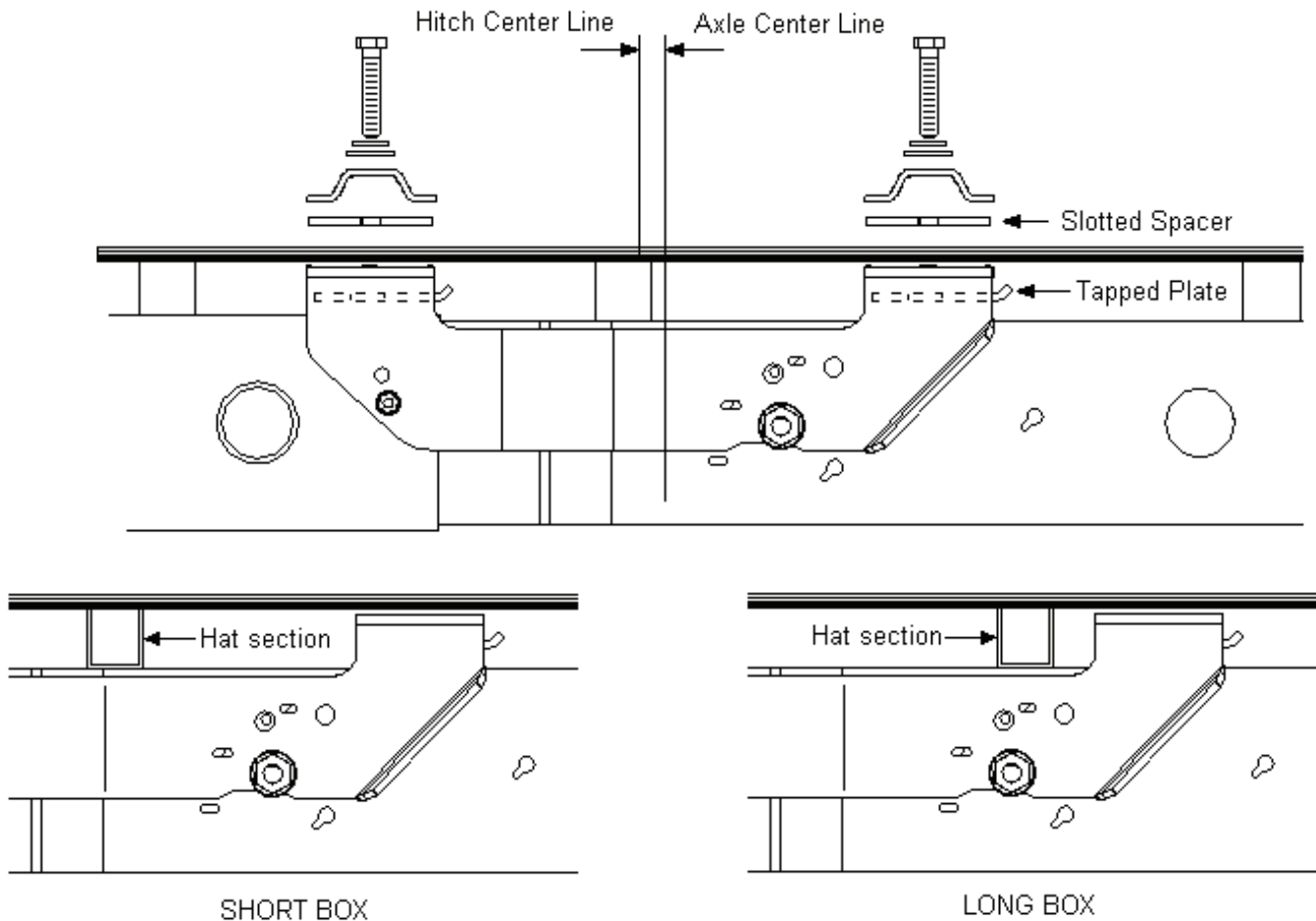
ASSEMBLY
OPERATION
REPLACEMENT PARTS

READ complete manual CAREFULLY
BEFORE attempting operation.

Doing Our Best to Provide You the Best

CHEVROLET/GMC: 2001-2010 Silverado/Sierra 2500 & 3500 HD
(6 1/2' & 8' Box includes new body style)

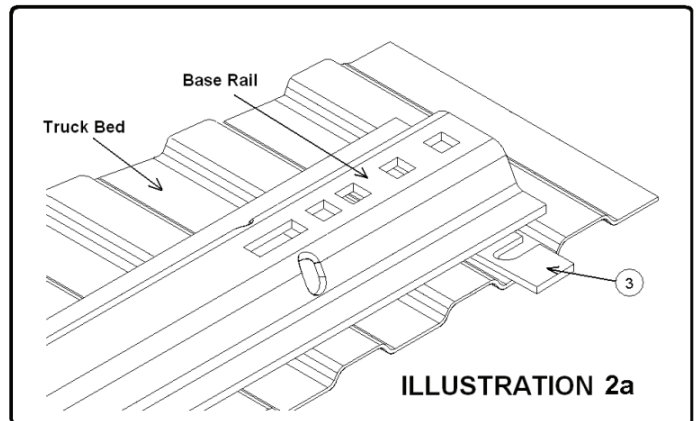
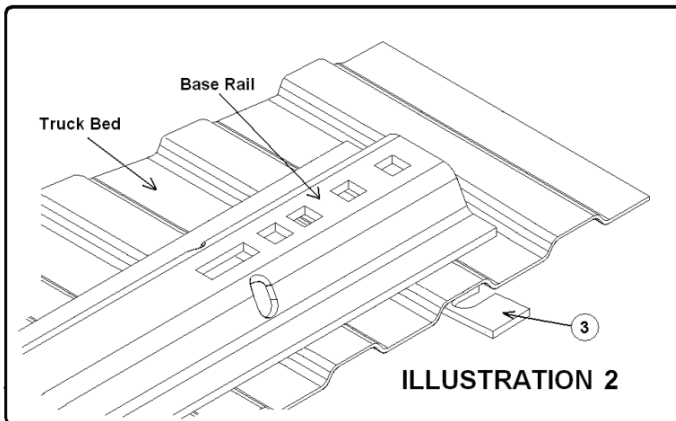
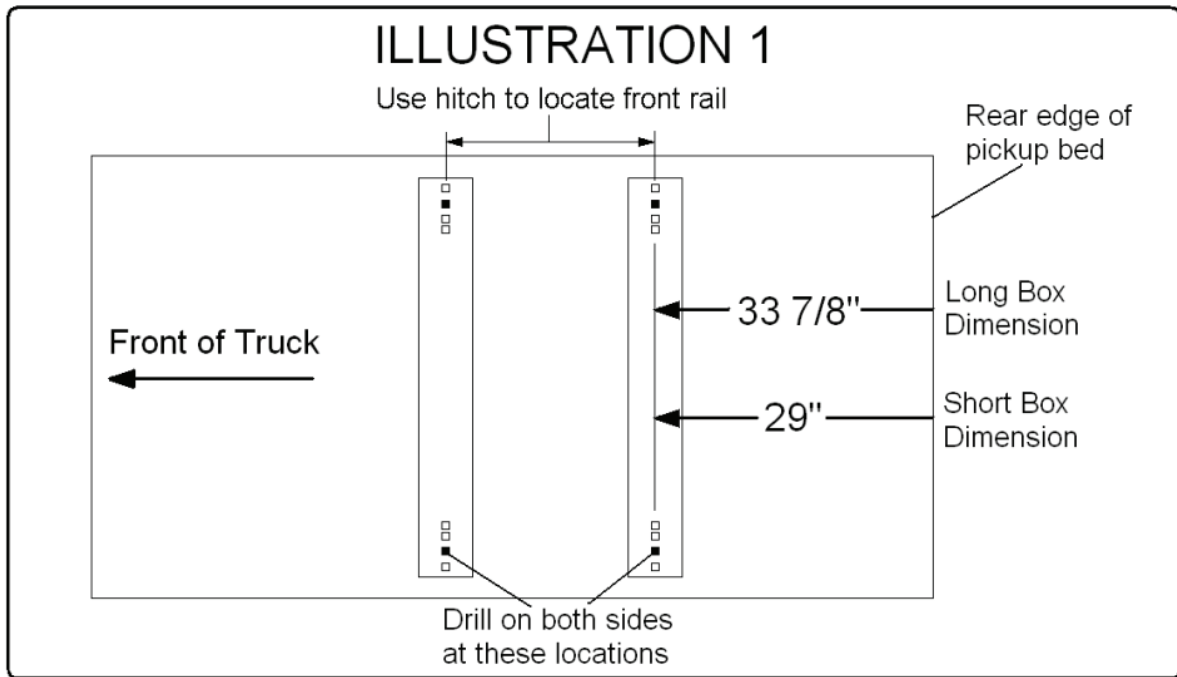
1 3/8" ahead of axle on short box applications
1 5/8" ahead of axle on long box application



1. Fully assemble the 5th wheel hitch on a flat, level surface and pin into the base rails (assembly instructions come with hitch components). Place assembled hitch in truck bed between the wheel wells..
2. Position the base rails in truck bed as shown in Illustration 1 (next page). When hitch is correctly positioned in the bed and the base rails are parallel, check below the bed before drilling holes to see all wiring, brake lines and other obstructions are moved out of the way and will not be contacted by the drill. Start by drilling one hole and place a 5/8" x 3" bolt (04215), 5/8" lock washer (00248) and 5/8" flat washer (00477) down through the hole after drilling and before drilling next hole. This will help to stop base rails from shifting during drilling.

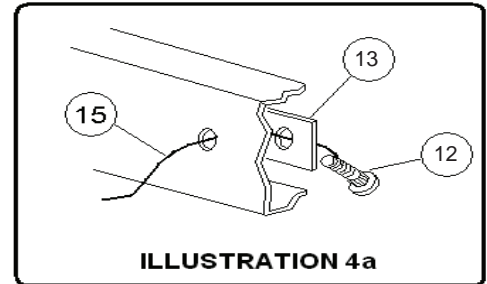
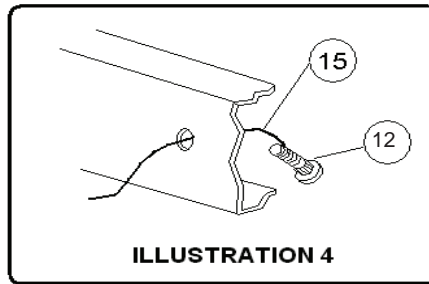
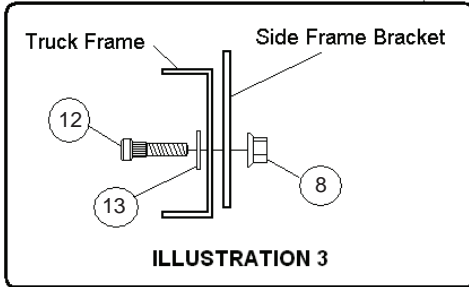
CAUTION: Do not install base rails over plastic bed liners. Plastic bed liners must be cut out of the way. Rails may be installed on spray in liners.

NOTE: Consult spray liner installer for recommended curing time.

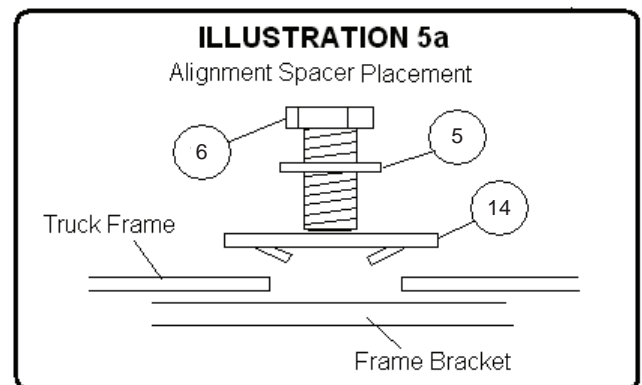
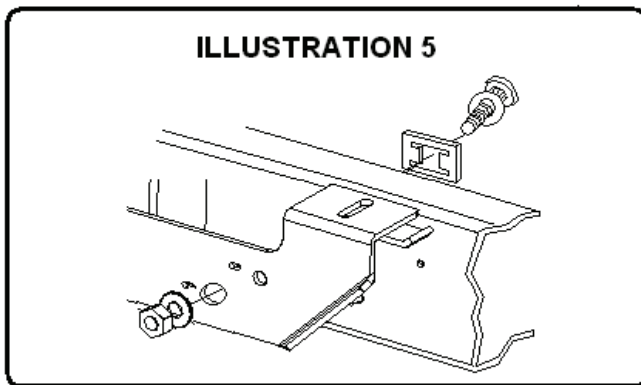


3. If the bed corrugation above the frame bracket is UP, leaving a space above the frame bracket, place a slotted spacer plate in this location as shown in Illustration 2. If the corrugation is DOWN at this location, place the slotted spacer plate in the bed, under the base rail as shown in Illustration 2a.
4. Remove the two existing screws holding the forward IBC unit onto the frame at the large 3/4" diameter bolt hole. Complete the installation then re-install the IBC unit using the longer 6mm bolts (14384), flat washers (07597) and tube spacers provided in bolt package.
5. Position the left (14183-76) and right (14184-76) frame brackets up against the outer surface of the truck frame with the mounting tabs positioned over the frame and under the bed in line with previously drilled holes in bed where the 5/8" x 3" bolts are coming down through the bed.
6. Make sure the frame brackets are tight against the flat side of the truck frame and underneath the surface of the truck bed with bolts extending down through slotted holes in frame bracket tabs. Thread bolts into tapped plates. Position tapped plates with bent portion pointed up towards under side of truck bed and with bent ends of tapped plates towards the tailgate end of truck bed. See drawing on second page.
7. Securely bolt the frame brackets into place. Be sure they are tight against the side of the truck frame. Tighten the 5/8" bolts according to the chart on the front page.
8. Before drilling any holes in the frame, check the inside of the frame to be sure that there are no wires, brake lines or other obstructions in the frame that may contact the drill. Also, check the forward frame bracket attachment hole to see if there is a hole in the truck frame that is aligned with the hole in the frame bracket. Each of the frame brackets must be attached to the side frame of the truck with a special 1/2" knurled bolt (14754) at the forward hole and a 3/4" bolt (01235) at the rear hole.

9. If there is no hole at the front attachment point, drill a 17/32" hole through the side of the truck frame using the hole in each frame bracket as a guide. **CAUTION:** Holes MUST be drilled 17/32" diameter, so that the special knurl bolts will seat properly. If the holes are too small, the bolt may break. If the hole is too large, it will not grip properly.



10. Place the knurled bolt into the frame first and then out through the frame brackets. See illustration 3. On the applications with existing slots in frame, insert a 3/16" spacer (14283-76) on the fish wire before the bolt. Thread the fish wire over the end of the knurled bolt and pull through the frame and frame bracket. See illustration 4 and 4a. Secure each bracket to the truck frame. The knurled portion of the bolts will lock into the frame holes as the nuts are tightened. Use of an air wrench will make installation easier.
11. At the rear of each frame bracket there are two large attachment holes. Choose the one hole that line up with the existing hole in the truck frame. Bolt frame bracket to truck frame with 3/4" fasteners as shown in illustration 5 (3/4" lock washer - 00254 and 3/4" Hex Nut - 00253 on bracket side) and 5a (3/4" x 2 bolt - 01235, 3/4" flat washer - 00492 and the alignment spacer 14290-76 on inside of frame). Be sure to use one of the alignment spacers that will line up with the bolt and large slot in the truck frame. Alignment spacer must rest fully into the large frame slot. See illustration 5a.



12. Tighten all bolts according to the chart on the front page.

Demco