



Ford
Chevrolet/GMC
Dodge
Toyota

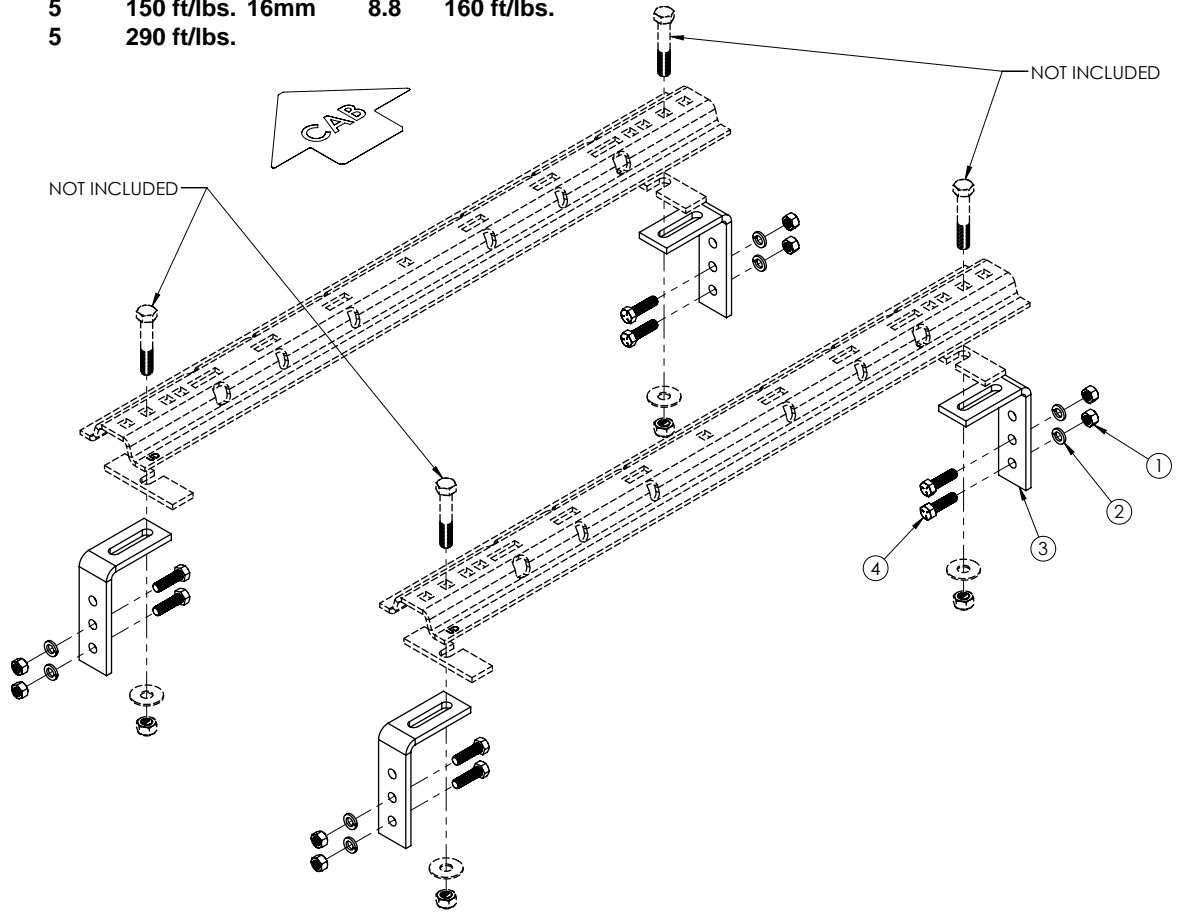
7/16
HJ32009, Rev 5



BOLT TORQUE SPECIFICATIONS

STANDARD BOLTS			METRIC BOLTS		
Size	Grade	Torque	Size	Grade	Torque
5/16"	5	18 ft/lbs.	8mm	8.8	23 ft/lbs.
3/8"	5	30 ft/lbs.	10mm	8.8	45 ft/lbs.
7/16"	5	50 ft/lbs.	12mm	8.8	78 ft/lbs.
1/2"	5	75 ft/lbs.	14mm	8.8	125 ft/lbs.
5/8"	5	150 ft/lbs.	16mm	8.8	160 ft/lbs.
3/4"	5	290 ft/lbs.			

FRAME BRACKET



8552009 PARTS LIST

REF. NO.	PART NO.	QTY.	DESCRIPTION
1.	00083	8	1/2" -NC Hex Nut
2.	00084	8	1/2" Lock Washer
3.	14189-76	4	411 Frame Bracket
4.	14266	8	1/2" -NC x 1 3/4" Hex Bolt Knurled Gr.5
5.	14238	1	1/2" Fish Wire (not shown)

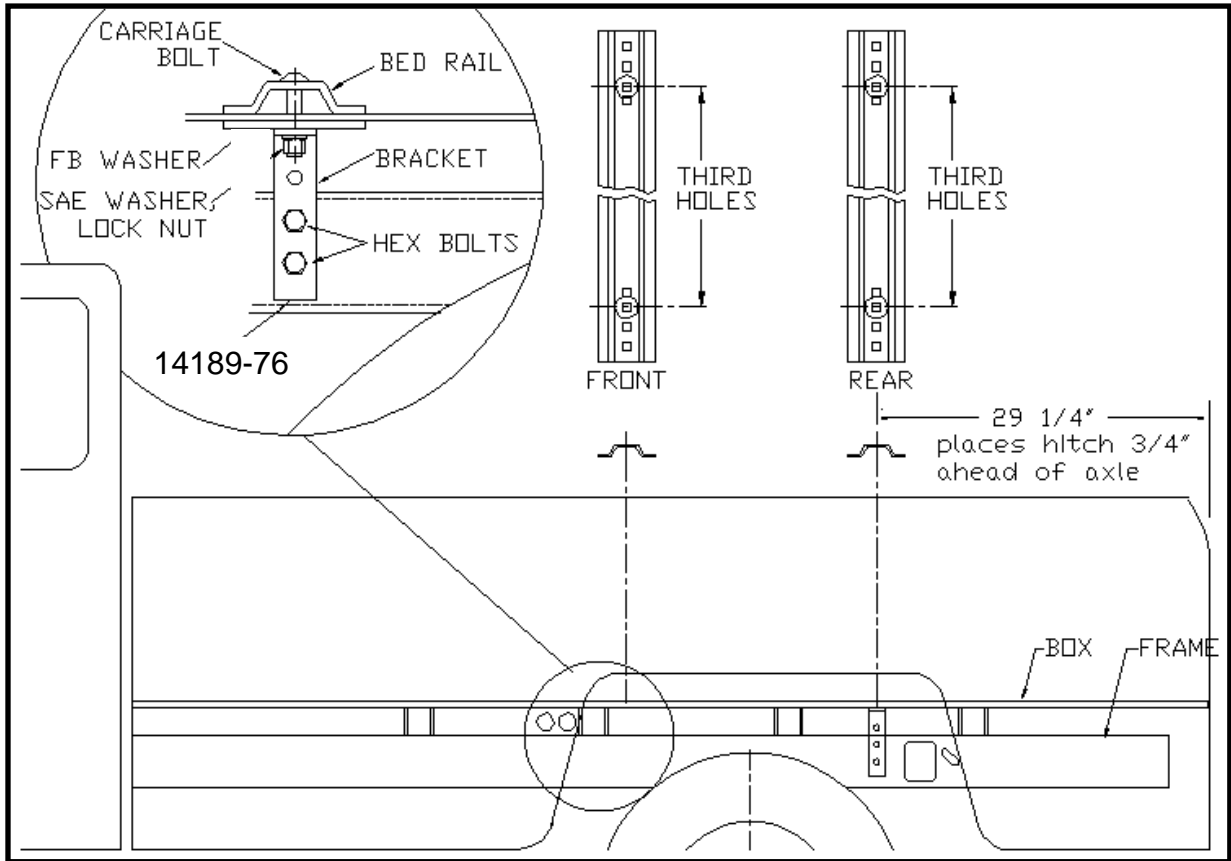
Please order replacement parts by **PART NO.** and **DESCRIPTION.**

ASSEMBLY
OPERATION
REPLACEMENT PARTS

READ complete manual *CAREFULLY*
BEFORE attempting operation.

Doing Our Best to Provide You the Best

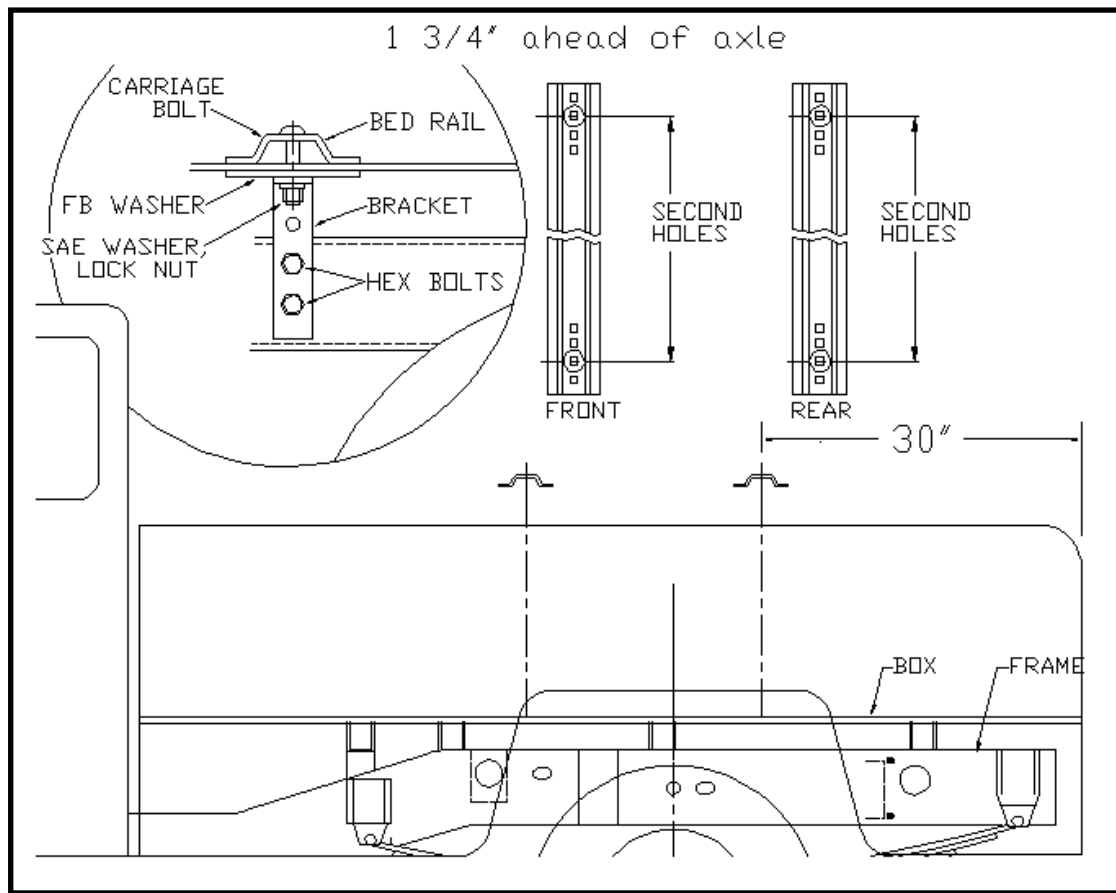
FORD: 1997-2003 F150 Light Duty (6 1/2' & 8' Boxes)
 1997-2003 F250 Light Duty (6 1/2' & 8' Boxes)



INSTALLATION

1. a. Completely assemble hitch. See GENERAL INSTRUCTIONS and SAFETY supplied.
 b. Set hitch into back of truck, center it side to side.
 c. Measure 29 1/4" from back edge of truck box to square hole centers in rear bed rail.
2. Check underneath box at bolt hole locations for any obstructions (frame members, etc.).
3. a. Drill two 5/8" holes thru FRONT BED RAIL, THIRD HOLE POSITION, as shown. Drop in two bolts.
 b. Drill two holes in REAR BED RAIL, THIRD HOLE POSITION. Drop in two bolts.
4. a. Under box, loosely install washers (2" wide flat bar), 411 frame brackets (14189-76), flat washers and lock nuts onto bolts (4 places).
 b. Press each bracket tight against frame member; tighten nuts snug against box.
5. a. Pilot drill* and drill 1/2" holes into truck frame, at two places thru holes each frame bracket--BE CAREFUL OF ELECTRIC OR FLUID LINES behind frame members.
 b. Brackets will be bolted onto frame by drilling frame and fishing knurl bolt (14266) through frame with fish wire (14238) and attach with hex nut (00083) and lock washer (00084) on outside of bracket.
 c. TIGHTEN ALL BOLTS ACCORDING TO THE CHART ON FRONT PAGE.

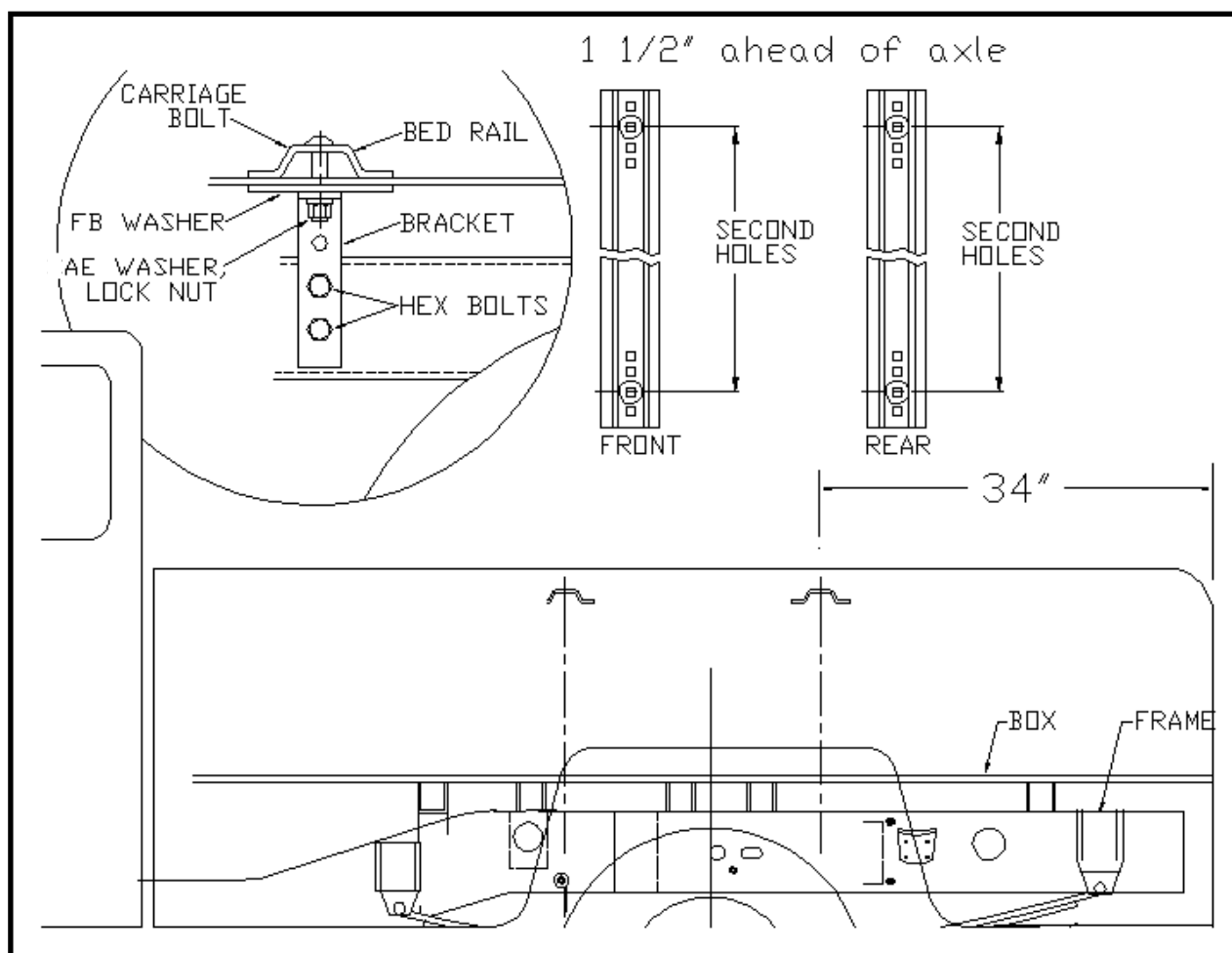
CHEVROLET/GMC: 2001-2007 Silverado & Sierra 2500 HD (6 1/2' Box)



INSTALLATION

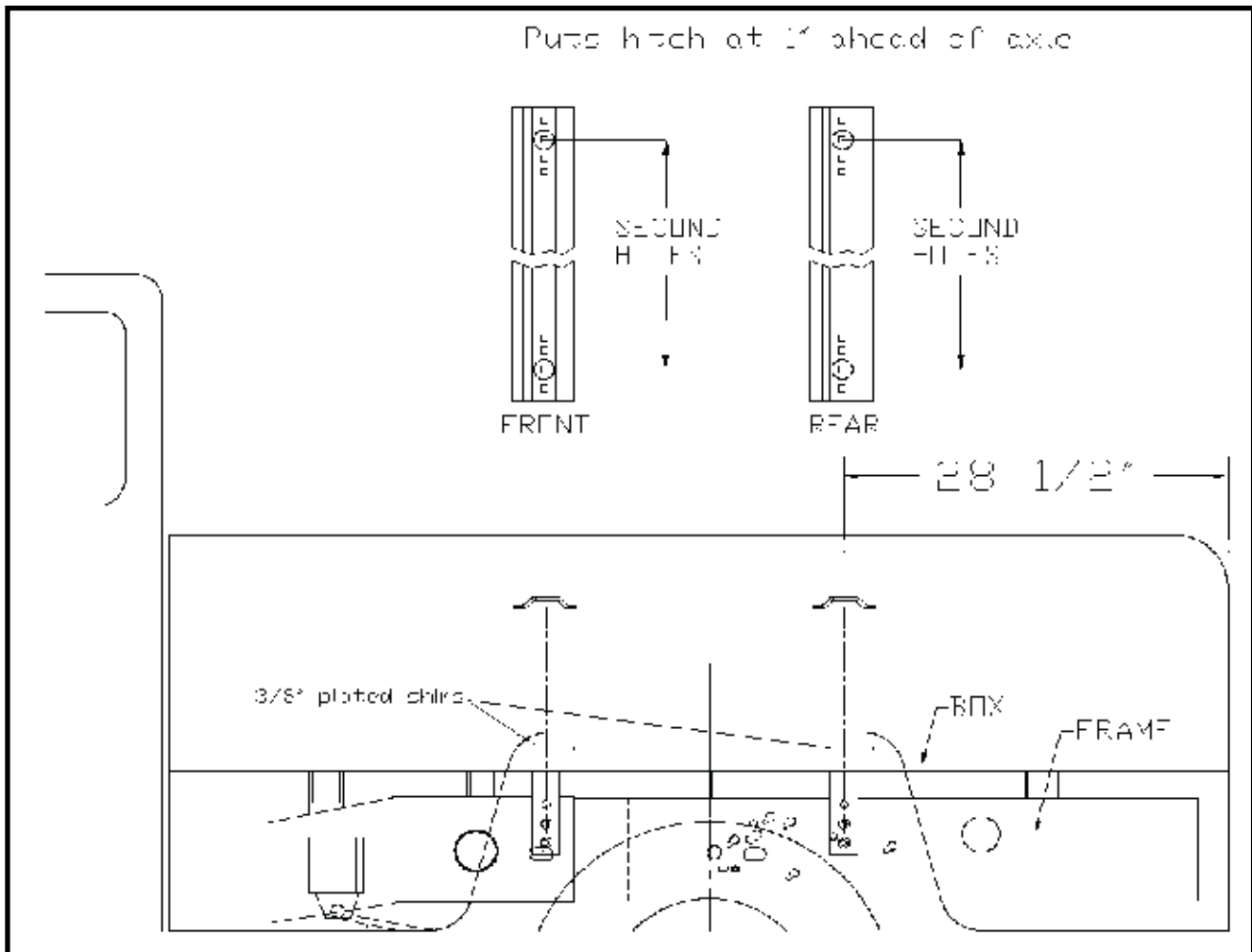
- Completely assemble hitch. See GENERAL INSTRUCTIONS and SAFETY supplied.
 - Set hitch into back of truck, center it side to side.
 - Measure 30" from back edge of truck box to square hole centers in rear bed rail.
- Check underneath box at bolt hole locations for any obstructions (frame members, etc.).
- Drill two 5/8" holes thru FRONT BED RAIL, SECOND HOLE POSITION, as shown.
 - Drop in two bolts.
 - Drill two holes in REAR BED RAIL, SECOND HOLE POSITION. Drop in two bolts.
- Under box, place washers (2" wide flat bar) and frame brackets (14189-76) onto bolts.
 - Loosely install washers and lock nuts.
 - Press brackets tight against frame member; tighten nuts snug against box.
- Pilot drill* and drill 1/2" holes into truck frame, at two places thru holes each frame bracket--BE CAREFUL OF ELECTRIC OR FLUID LINES behind frame members.
 - Brackets will be bolted onto frame by drilling frame and fishing knurl bolt (14266) through frame with fish wire (14238) and attach with hex nut (00083) and lock washer (00084) on outside of bracket.
 - TIGHTEN ALL BOLTS ACCORDING TO THE CHART ON FRONT PAGE.

CHEVROLET/GMC: 2001-2007 Silverado & Sierra 3500 HD (8' Box)



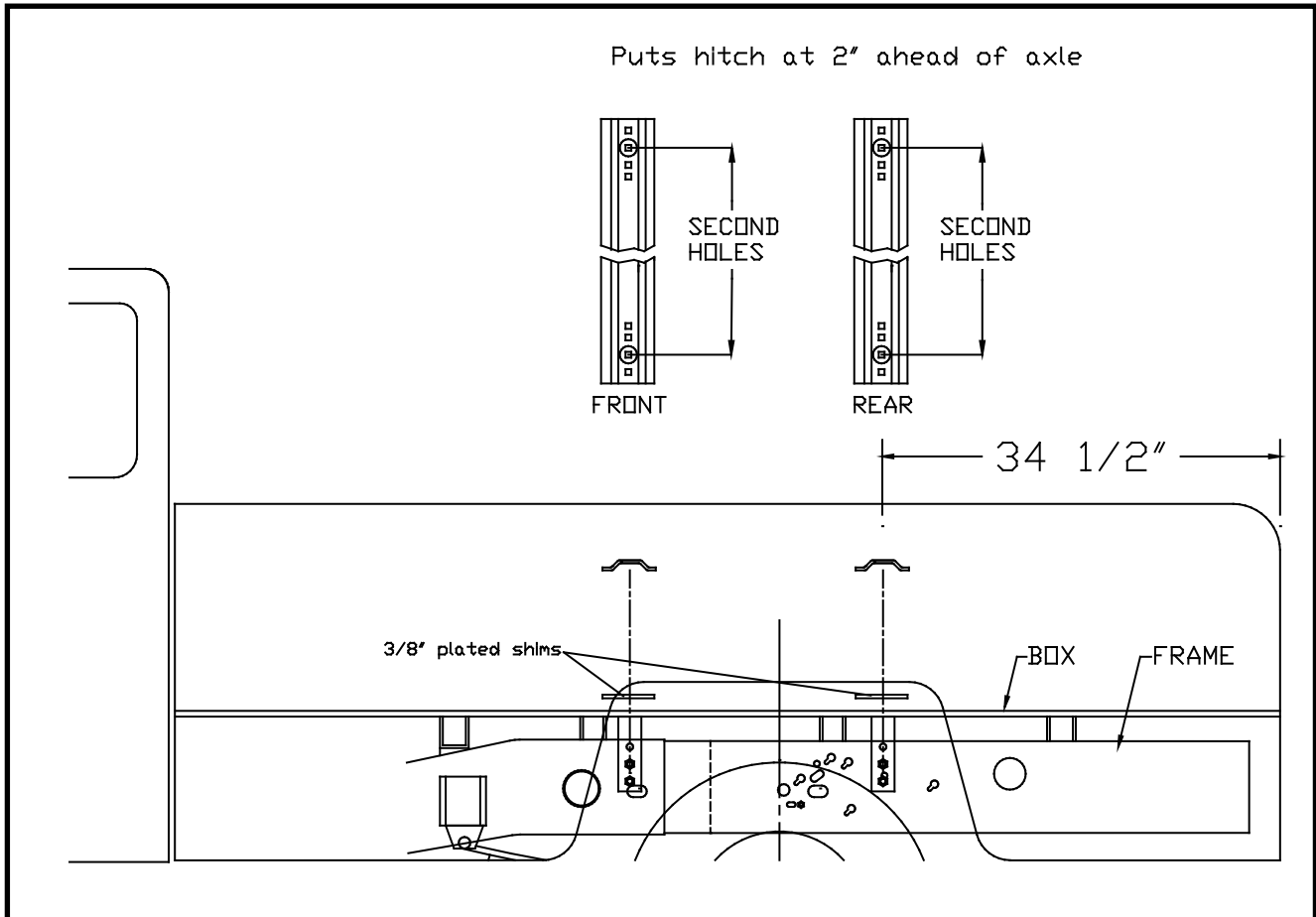
INSTALLATION

- Completely assemble hitch. See GENERAL INSTRUCTIONS and SAFETY supplied.
 - Set hitch into back of truck, center it side to side.
 - Measure 34" from back edge of truck box to square hole centers in rear bed rail.
- Check underneath box at bolt hole locations for any obstructions (frame members, etc.).
- Drill two 5/8" holes thru FRONT BED RAIL, SECOND HOLE POSITION, as shown.
 - Drop in two bolts.
 - Drill two holes in REAR BED RAIL, SECOND HOLE POSITION. Drop in two bolts.
- Under box, place washers (2" wide flat bar) and frame brackets (14189-76) onto bolts.
 - Loosely install washers and lock nuts.
 - Press brackets tight against frame member; tighten nuts snug against box.
- Pilot drill* and drill 1/2" holes into truck frame, at two places thru holes each frame bracket--BE CAREFUL OF ELECTRIC OR FLUID LINES behind frame members.
 - Brackets will be bolted onto frame by drilling frame and fishing knurl bolt (14266) through frame with fish wire (14238) and attach with hex nut (00083) and lock washer (00084) on outside of bracket.
 - TIGHTEN ALL BOLTS ACCORDING TO THE CHART ON FRONT PAGE.



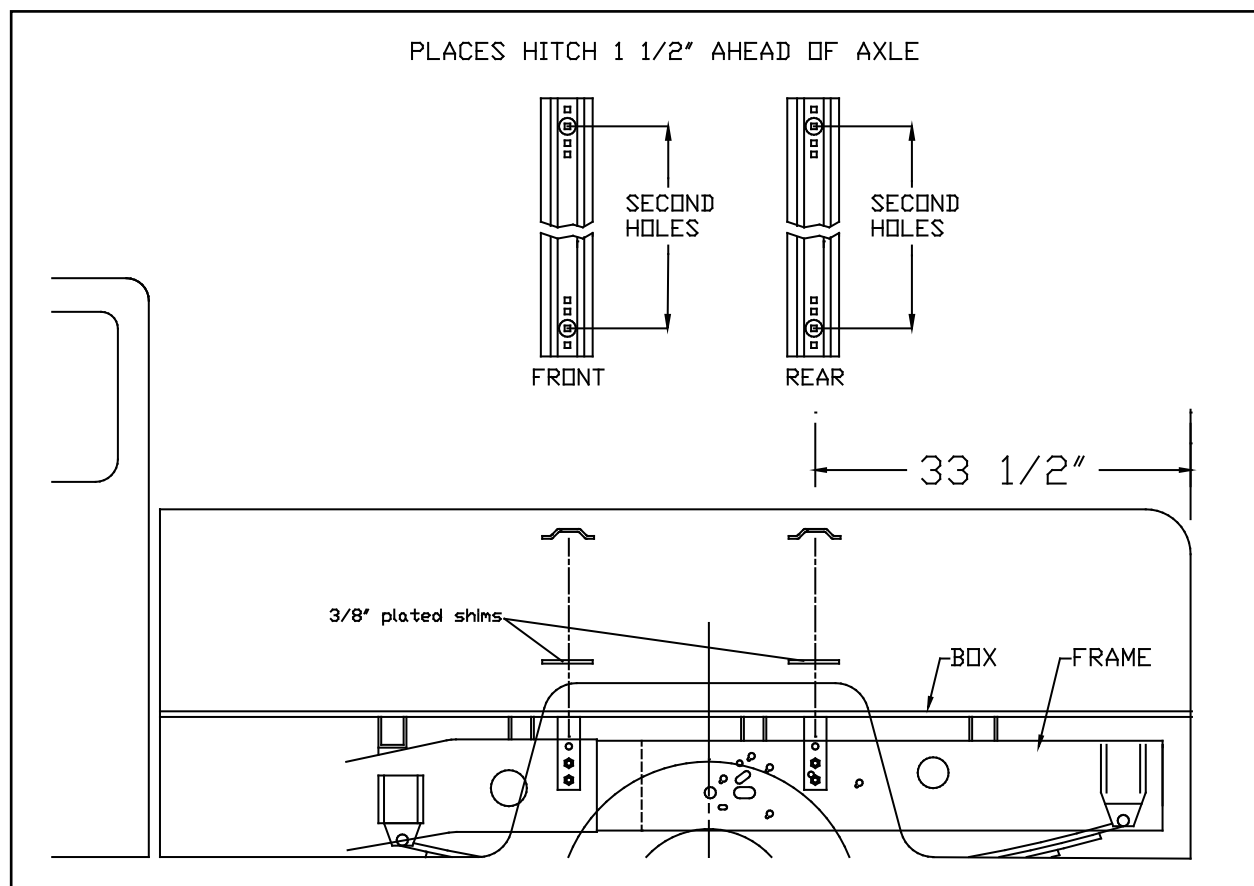
INSTALLATION

- Completely assemble hitch. See GENERAL INSTRUCTIONS and SAFETY supplied.
 - Set hitch into back of truck, center it side to side.
 - Measure 28 1/2" from back edge of truck box to square hole centers in rear bed rail.
- Check underneath box at bolt hole locations for any obstructions (frame members, etc.).
- Drill two 5/8" holes thru FRONT BED RAIL, SECOND HOLE POSITION, as shown.
 - Drop in two bolts.
 - Drill two holes in REAR BED RAIL, SECOND HOLE POSITION. Drop in two bolts.
 - Place a plated shim under base rail in bed depression closest to each bolt (see above).
- Under box, place frame brackets (14189-76) onto bolts.
 - Loosely install washers and lock nuts.
 - Press brackets tight against frame member; tighten nuts snug against box.
- Pilot drill* and drill 1/2" holes into truck frame, at two places thru holes each frame bracket--BE CAREFUL OF ELECTRIC OR FLUID LINES behind frame members.
 - Brackets will be bolted onto frame by drilling frame and fishing knurl bolt (14266) through frame with fish wire (14238) and attach with hex nut (00083) and lock washer (00084) on outside of bracket.
 - TIGHTEN ALL BOLTS ACCORDING TO THE CHART ON FRONT PAGE.



INSTALLATION

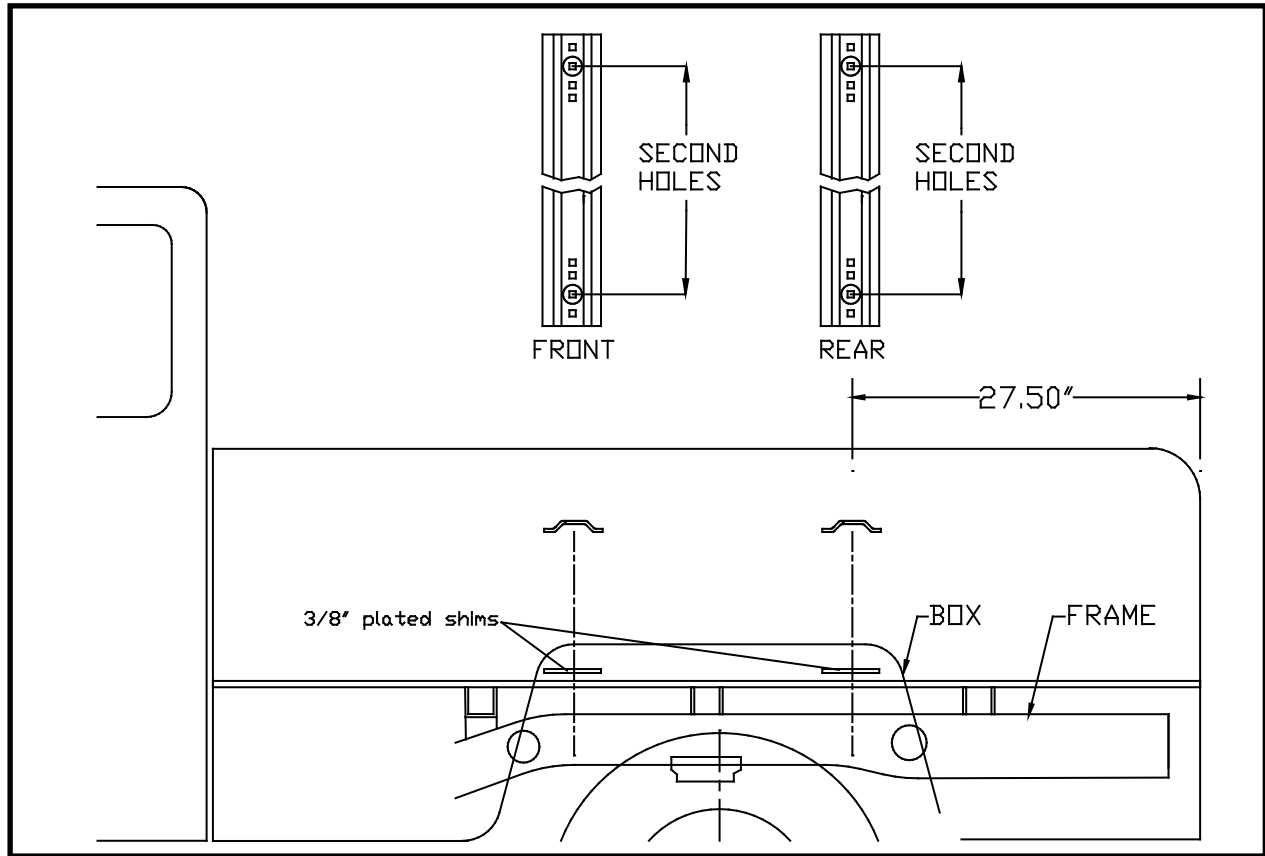
- Completely assemble hitch. See GENERAL INSTRUCTIONS and SAFETY supplied.
 - Set hitch into back of truck, center it side to side.
 - Measure 34 1/2" from back edge of truck box to square hole centers in rear bed rail.
- Check underneath box at bolt hole locations for any obstructions (frame members, etc.).
- Drill two 5/8" holes thru FRONT BED RAIL, SECOND HOLE POSITION, as shown.
 - Drop in two bolts.
 - Drill two holes in REAR BED RAIL, SECOND HOLE POSITION. Drop in two bolts.
 - Place a plated shim under base rail in bed depression closest to each bolt (see above).
- Under box, place frame brackets (14189-76) onto bolts.
 - Loosely install washers and lock nuts.
 - Press brackets tight against frame member; tighten nuts snug against box.
- Pilot drill* and drill 1/2" holes into truck frame, at two places thru holes each frame bracket--BE CAREFUL OF ELECTRIC OR FLUID LINES behind frame members.
 - Brackets will be bolted onto frame by drilling frame and fishing knurl bolt (14266) through frame with fish wire (14238) and attach with hex nut (00083) and lock washer (00084) on outside of bracket.
 - TIGHTEN ALL BOLTS ACCORDING TO THE CHART ON FRONT PAGE.



INSTALLATION

- Completely assemble hitch. See GENERAL INSTRUCTIONS and SAFETY supplied.
 - Set hitch into back of truck, center it side to side.
 - Measure 33 1/2" from back edge of truck box to square hole centers in rear bed rail.
- Check underneath box at bolt hole locations for any obstructions (frame members, etc.).
- Drill two 5/8" holes thru FRONT BED RAIL, SECOND HOLE POSITION, as shown.
 - Drop in two bolts.
 - Drill two holes in REAR BED RAIL, SECOND HOLE POSITION. Drop in two bolts.
 - Place a plated shim under base rail in bed depression closest to each bolt (see above).
- Under box, place frame brackets (14189-76) onto bolts.
 - Loosely install washers and lock nuts.
 - Press brackets tight against frame member; tighten nuts snug against box.
- Pilot drill* and drill 1/2" holes into truck frame, at two places thru holes each frame bracket--BE CAREFUL OF ELECTRIC OR FLUID LINES behind frame members.
 - Brackets will be bolted onto frame by drilling frame and fishing knurl bolt (14266) through frame with fish wire (14238) and attach with hex nut (00083) and lock washer (00084) on outside of bracket.
 - TIGHTEN ALL BOLTS ACCORDING TO THE CHART ON FRONT PAGE.

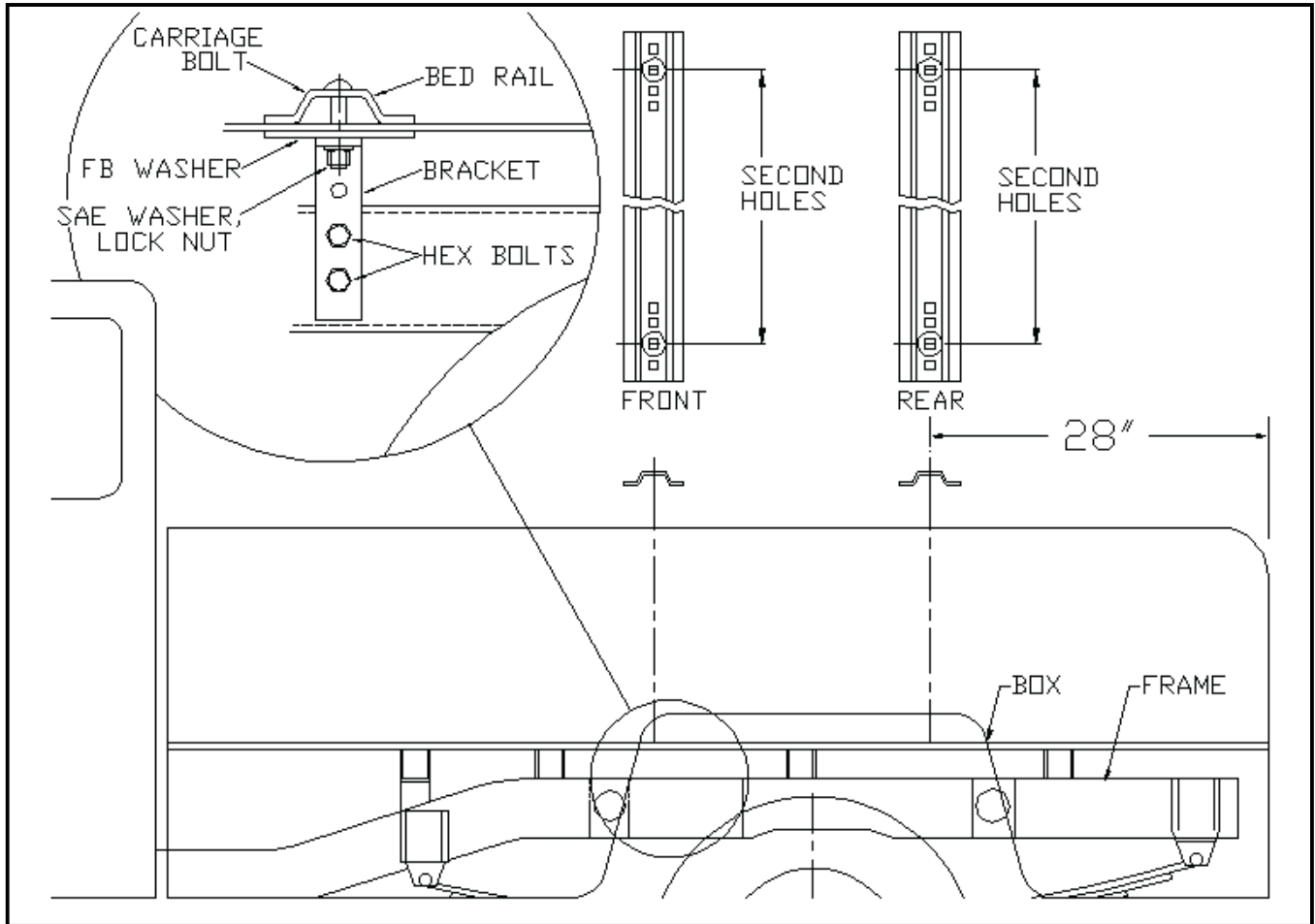
CHEVROLET/GMC: 2007-2013 Silverado & Sierra 1500
(5 1/2', 6 1/2' & 8' Box tube frame)



INSTALLATION

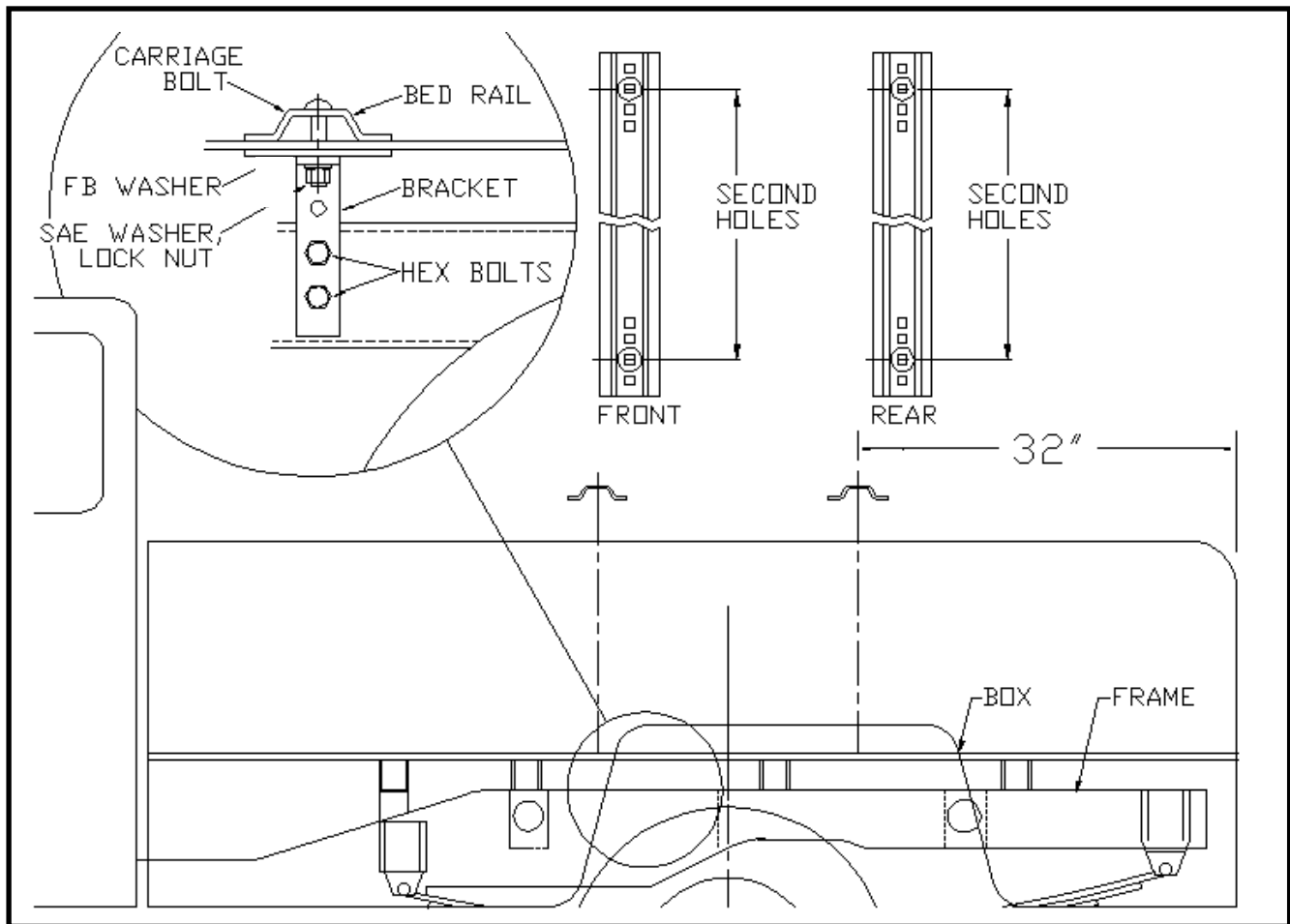
1.
 - a. Completely assemble hitch. See GENERAL INSTRUCTIONS and SAFETY supplied.
 - b. Set hitch into back of truck, center it side to side.
 - c. Measure 27 1/2" for 5 1/2' & 6 1/2' box or 33 1/2" for 8' box from back edge of truck box to square hole centers in rear bed rail.
2. Check underneath box at bolt hole locations for any obstructions (frame members, etc.).
3.
 - a. Drill two 5/8" holes thru FRONT BED RAIL, SECOND HOLE POSITION, as shown.
 - b. Drop in two bolts.
 - c. Drill two holes in REAR BED RAIL, SECOND HOLE POSITION. Slide 3/8" plated shims under base rails in valley closest to bolt at both ends.
4.
 - a. Under box, place washers (2" wide flat bar) and frame brackets (14189-76) onto bolt.
 - b. Loosely install washers and lock nuts.
 - c. Press brackets tight against frame member; tighten nuts snug against box.
5.
 - a. Brackets will be bolted onto frame by drilling frame and fishing knurl bolt (14266) thru frame with a fish wire and attach with hex nut (00083) and lock washer (00084) on outside of bracket. Use a 1/2" drill for holes. BE CAREFUL OF ELECTRIC OR FLUID LINES behind frame members.
 - b. Brackets will be bolted onto frame by drilling frame and fishing knurl bolt (14266) through frame with fish wire (14238) and attach with hex nut (00083) and lock washer (00084) on outside of bracket.
 - c. TIGHTEN ALL BOLTS ACCORDING TO THE CHART ON FRONT PAGE.

CHEVROLET/GMC:1999-2007 Silverado & Sierra1500/1500HD (5 1/2' & 6 1/2' Box)
1999-2007 Silverado & Sierra 2500 (6 1/2' Box)



INSTALLATION

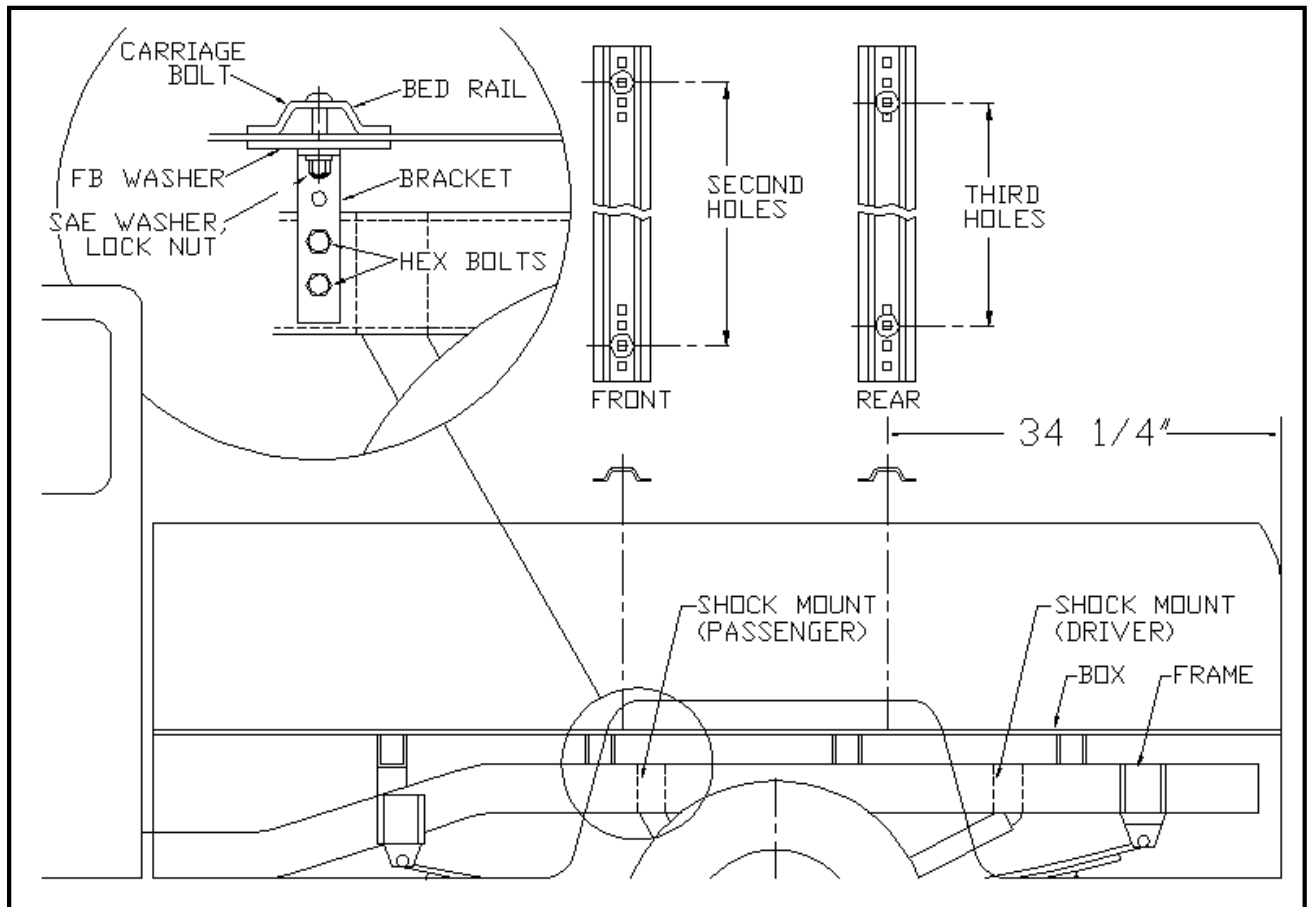
1. a. Completely assemble hitch. See GENERAL INSTRUCTIONS and SAFETY supplied.
b. Set hitch into back of truck, center it side to side.
c. Measure 28" from back edge of truck box to square hole centers in rear bed rail.
2. Check underneath box at bolt hole locations for any obstructions (frame members, etc.).
3. a. Drill two 5/8" holes thru FRONT BED RAIL, SECOND HOLE POSITION, as shown.
b. Drop in two bolts.
c. Drill two holes in REAR BED RAIL, SECOND HOLE POSITION. Drop in two bolts.
4. a. Under box, place washers (2" wide flat bar) and frame brackets (14189-76) onto bolts.
b. Loosely install washers and lock nuts.
c. Press brackets tight against frame member; tighten nuts snug against box.
5. a. Pilot drill* and drill 1/2" holes into truck frame, at two places thru holes each frame bracket--BE CAREFUL OF ELECTRIC OR FLUID LINES behind frame members.
b. Brackets will be bolted onto frame by drilling frame and fishing knurl bolt (14266) through frame with fish wire (14238) and attach with hex nut (00083) and lock washer (00084) on outside of bracket.
c. TIGHTEN ALL BOLTS ACCORDING TO THE CHART ON FRONT PAGE.



INSTALLATION

- Completely assemble hitch. See GENERAL INSTRUCTIONS and SAFETY supplied.
 - Set hitch into back of truck, center it side to side.
 - Measure 32" from back edge of truck box to square hole centers in rear bed rail.
- Check underneath box at bolt hole locations for any obstructions (frame members, etc.).
- Drill two 5/8" holes thru FRONT BED RAIL, SECOND HOLE POSITION, as shown.
 - Drop in two bolts.
 - Drill two holes in REAR BED RAIL, SECOND HOLE POSITION. Drop in two bolts.
- Under box, place washers (2" wide flat bar) and frame brackets (14189-76) onto bolts.
 - Loosely install washers and lock nuts.
 - Press brackets tight against frame member; tighten nuts snug against box.
- Pilot drill* and drill 1/2" holes into truck frame, at two places thru holes each frame bracket--BE CAREFUL OF ELECTRIC OR FLUID LINES behind frame members.
 - Brackets will be bolted onto frame by drilling frame and fishing knurl bolt (14266) through frame with fish wire (14238) and attach with hex nut (00083) and lock washer (00084) on outside of bracket.
 - TIGHTEN ALL BOLTS ACCORDING TO THE CHART ON FRONT PAGE.

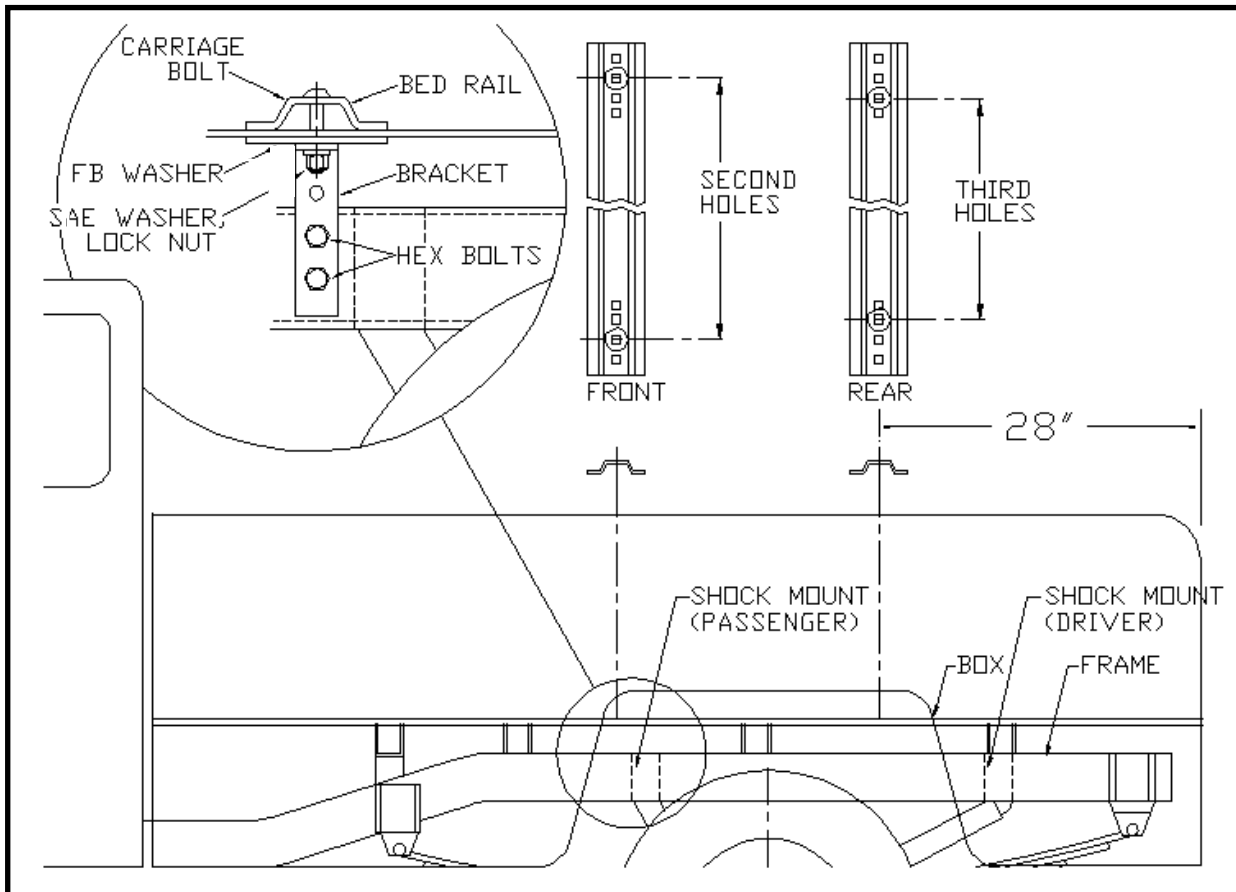
CHEVROLET/GMC: 1988-1998 Silverado & Sierra 1500/2500 (8' Box)
 1988-2000 Silverado & Sierra 3500 (8' Box)



INSTALLATION

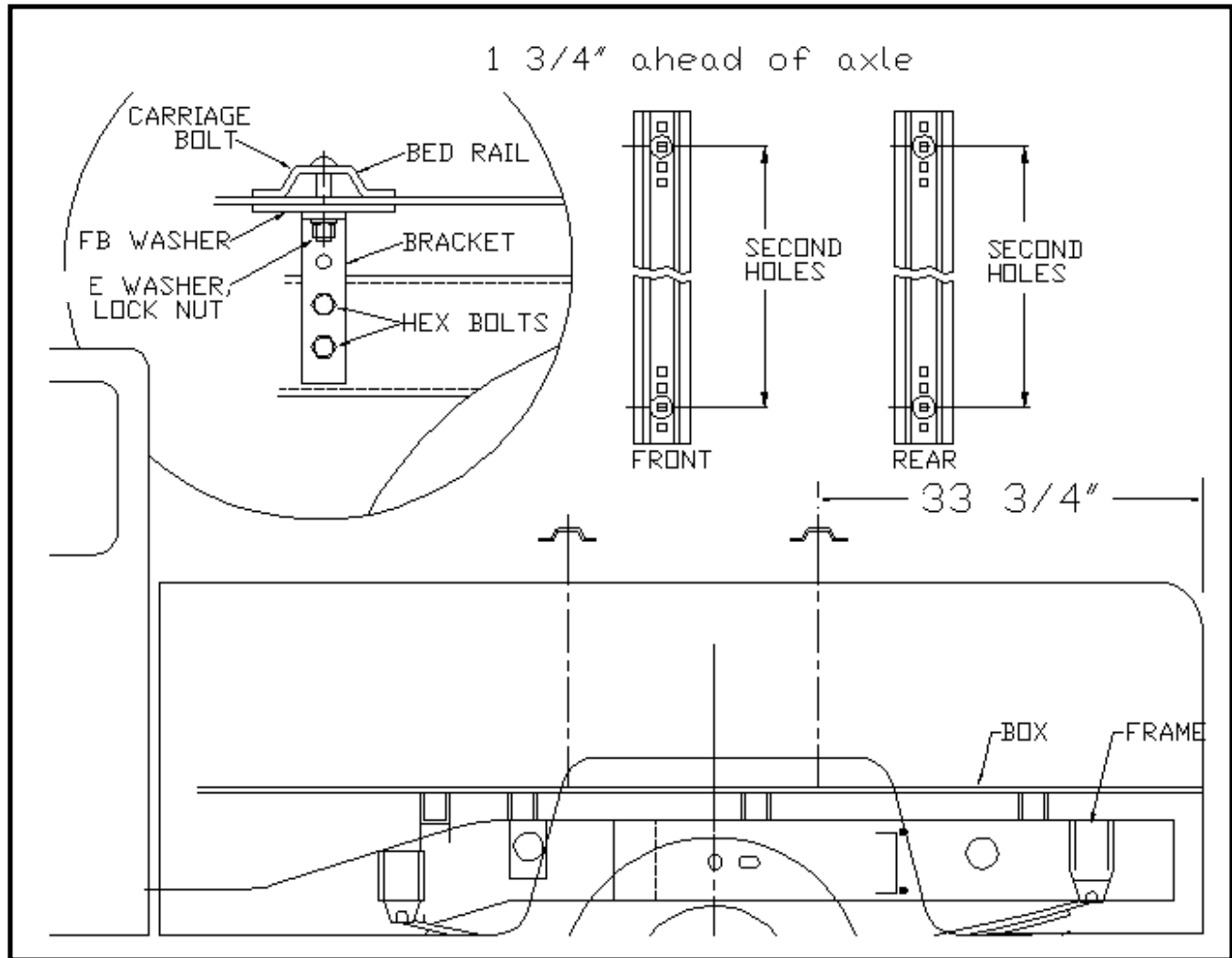
1. a. Completely assemble hitch. See GENERAL INSTRUCTIONS and SAFETY supplied.
 b. Set hitch into back of truck, center it side to side.
 c. Measure 34 1/4" from back edge of truck box to square hole centers in rear bed rail.
2. Check underneath box at bolt hole locations for any obstructions (frame members, etc.).
3. a. Drill two 5/8" holes thru FRONT BED RAIL, SECOND HOLE POSITION, as shown.
 b. Drop in two bolts.
 c. Drill two holes in REAR BED RAIL, SECOND HOLE POSITION. Drop in two bolts.
4. a. Under box, place washers (2" wid flat bar) and frame brackets (14189-76) onto bolts.
 b. Loosely install washers and lock nuts.
 c. Press brackets tight against frame member; tighten nuts snug against box.
5. a. Pilot drill* and drill 1/2" holes into truck frame, at two places thru holes each frame bracket--BE CAREFUL OF ELECTRIC OR FLUID LINES behind frame members.
 b. Brackets will be bolted onto frame by drilling frame and fishing knurl bolt (14266) through frame with fish wire (14238) and attach with hex nut (00083) and lock washer (00084) on outside of bracket.
 c. TIGHTEN ALL BOLTS ACCORDING TO THE CHART ON FRONT PAGE.

CHEVROLET/GMC: 1988-1999 Silverado & Sierra 1500 (5 1/2' & 6 1/2' Box)
 1988-1999 Silverado & Sierra 2500 (6 1/2' Box)
 2003-2007 1500 & 1500 HD (5 1/2' & 6 1/2' Box)
 1998-2000 3500 (6 1/2' Box)



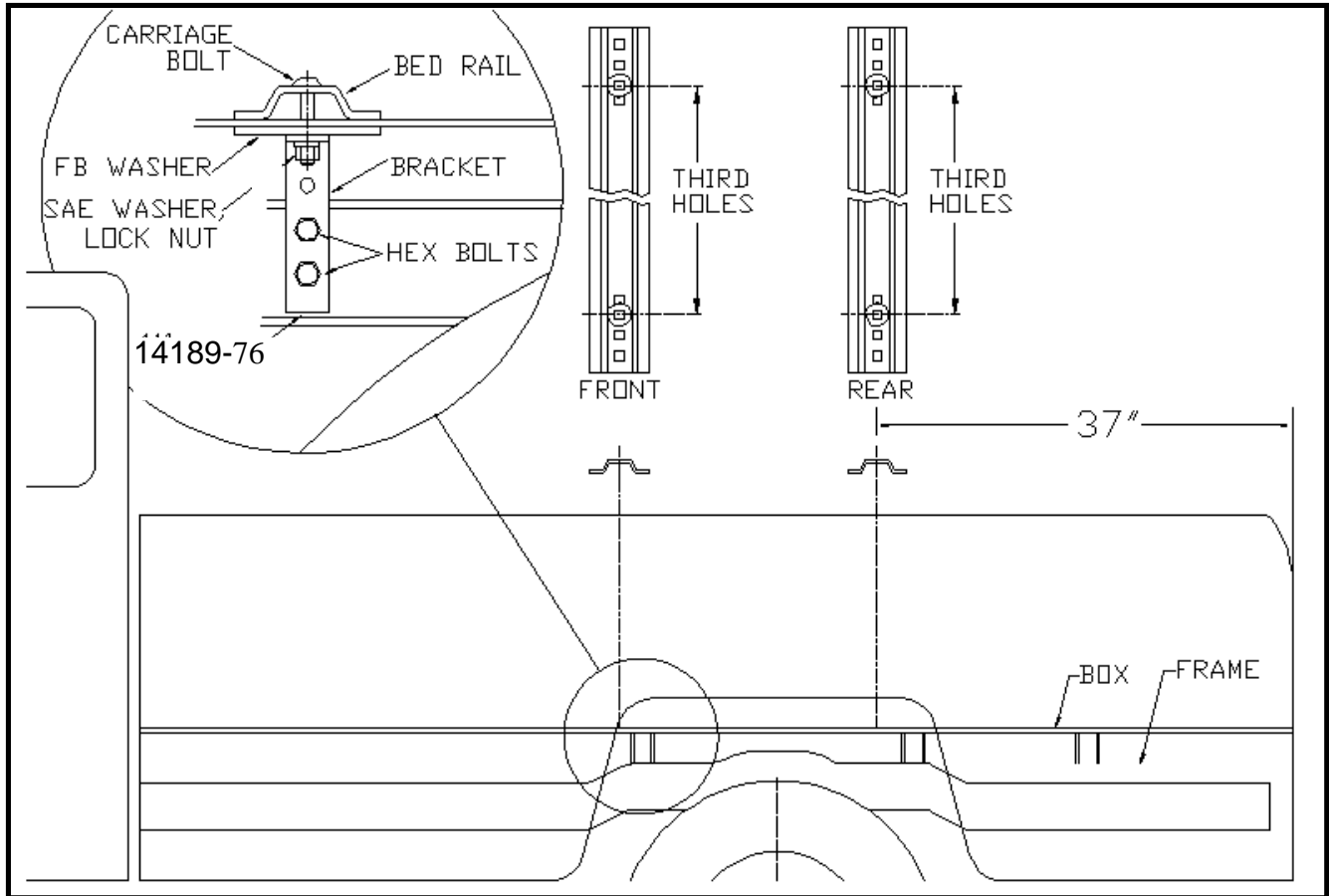
INSTALLATION

1. a. Completely assemble hitch. See GENERAL INSTRUCTIONS and SAFETY supplied.
 b. Set hitch into back of truck, center it side to side.
 c. Measure 28" from back edge of truck box to square hole centers in rear bed rail.
2. Check underneath box at bolt hole locations for any obstructions (frame members, etc.).
3. a. Drill two 5/8" holes thru FRONT BED RAIL, SECOND HOLE POSITION, as shown.
 b. Drop in two bolts.
 c. Drill two holes in REAR BED RAIL, SECOND HOLE POSITION. Drop in two bolts.
4. a. Under box, place washers (2" wid flat bar) and frame brackets (14189-76) onto bolts.
 b. Loosely install washers and lock nuts.
 c. Press brackets tight against frame member; tighten nuts snug against box.
5. a. Pilot drill* and drill 1/2" holes into truck frame, at two places thru holes each frame bracket--BE CAREFUL OF ELECTRIC OR FLUID LINES behind frame members.
 b. Brackets will be bolted onto frame by drilling frame and fishing knurl bolt (14266) through frame with fish wire (14238) and attach with hex nut (00083) and lock washer (00084) on outside of bracket.
 c. TIGHTEN ALL BOLTS ACCORDING TO THE CHART ON FRONT PAGE.



INSTALLATION

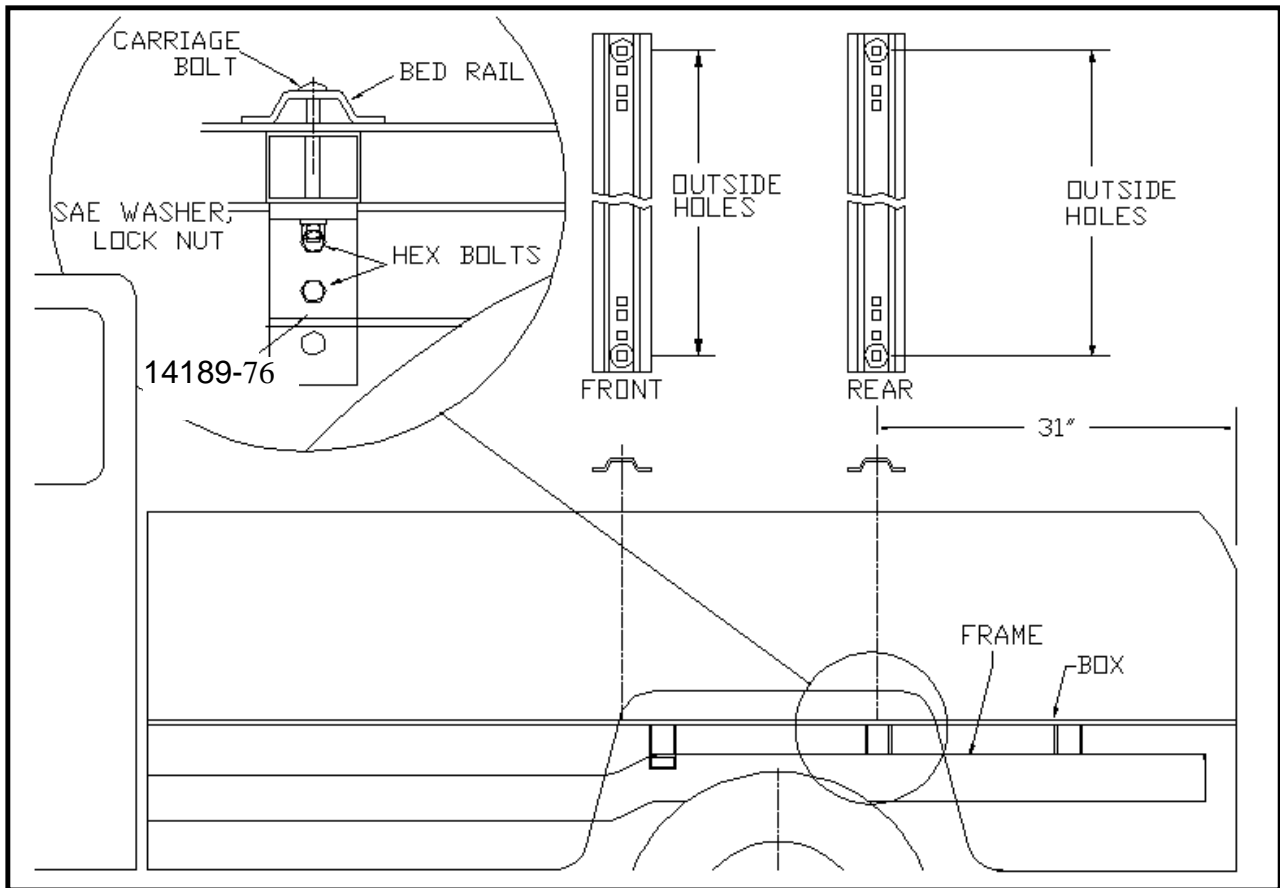
1.
 - a. Completely assemble hitch. See GENERAL INSTRUCTIONS and SAFETY supplied.
 - b. Set hitch into back of truck, center it side to side.
 - c. Measure 33 3/4" from back edge of truck box to square hole centers in rear bed rail.
2. Check underneath box at bolt hole locations for any obstructions (frame members, etc.).
3.
 - a. Drill two 5/8" holes thru FRONT BED RAIL, SECOND HOLE POSITION, as shown.
 - b. Drop in two bolts.
 - c. Drill two holes in REAR BED RAIL, SECOND HOLE POSITION. Drop in two bolts.
4.
 - a. Under box, place washers (2" wid flat bar) and frame brackets (14189-76) onto bolts.
 - b. Loosely install washers and lock nuts.
 - c. Press brackets tight against frame member; tighten nuts snug against box.
5.
 - a. Pilot drill* and drill 1/2" holes into truck frame, at two places thru holes each frame bracket--BE CAREFUL OF ELECTRIC OR FLUID LINES behind frame members.
 - b. Brackets will be bolted onto frame by drilling frame and fishing knurl bolt (14266) through frame with fish wire (14238) and attach with hex nut (00083) and lock washer (00084) on outside of bracket.
 - c. TIGHTEN ALL BOLTS ACCORDING TO THE CHART ON FRONT PAGE.



INSTALLATION

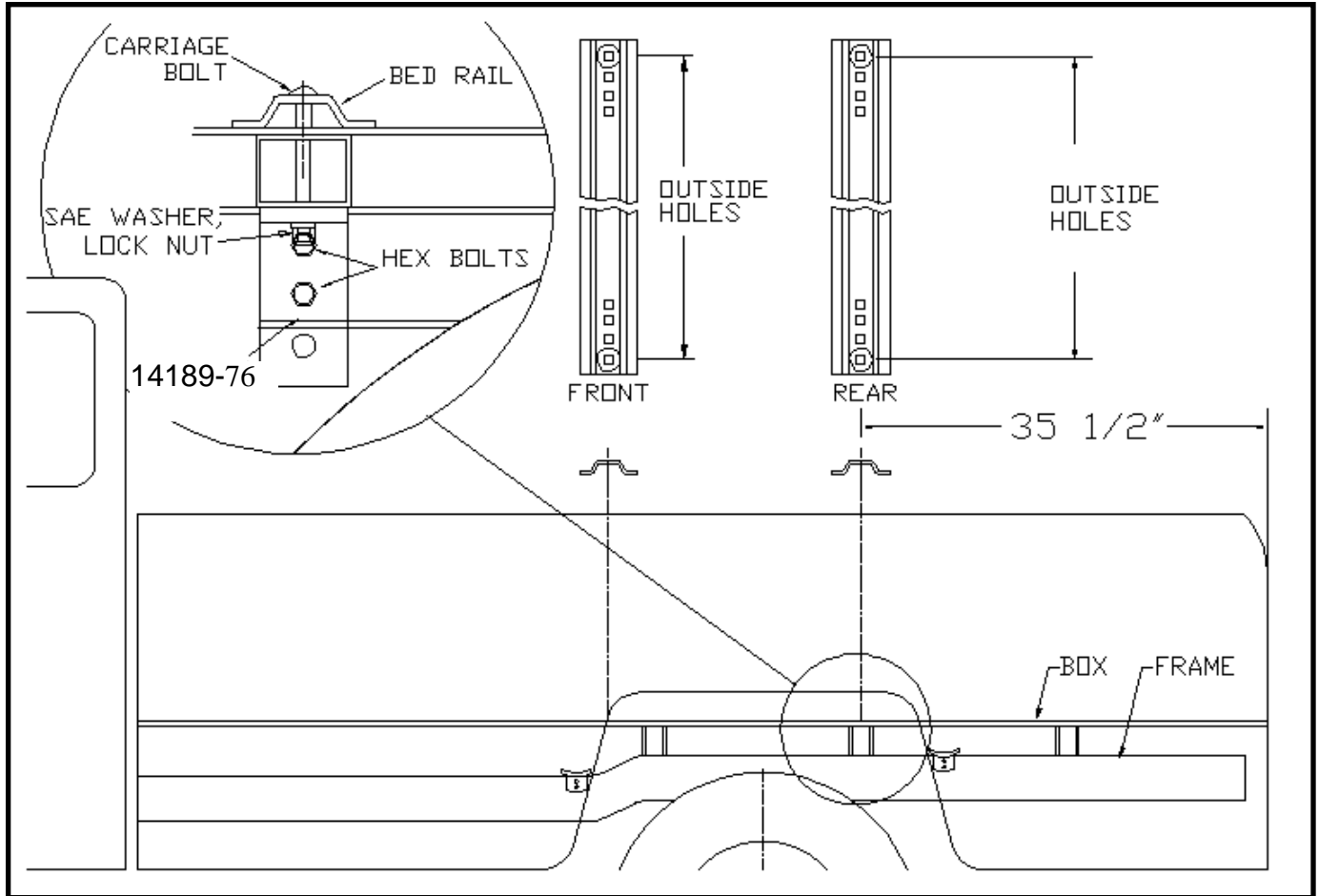
1. a. Completely assemble hitch. See GENERAL INSTRUCTIONS and SAFETY supplied.
 b. Set hitch into back of truck, center it side to side.
 c. Measure 37" from back edge of truck box to square hole centers in rear bed rail.
2. Check underneath box at bolt hole locations for any obstructions (frame members, etc.).
3. a. Drill two 5/8" holes thru FRONT BED RAIL, THIRD HOLE POSITION, as shown.
 b. Drop in two bolts.
 c. Drill two holes in REAR BED RAIL, THIRD HOLE POSITION. Drop in two bolts.
4. a. Under box, place washers (2" wid flat bar), 411 frame brackets (14189-76), flat washer and lock nuts onto bolts (4 places).
 b. Press each bracket tight against frame member; tighten nuts snug against box.
5. a. Pilot drill* and drill 1/2" holes into truck frame, at two places thru holes each frame bracket--BE CAREFUL OF ELECTRIC OR FLUID LINES behind frame members.
 b. Brackets will be bolted onto frame by drilling frame and fishing knurl bolt (14266) through frame with fish wire (14238) and attach with hex nut (00083) and lock washer (00084) on outside of bracket.
 c. TIGHTEN ALL BOLTS ACCORDING TO THE CHART ON FRONT PAGE.

DODGE: 1994-2001 Ram 1500 (5 1/2' & 6 1/2' Box)
1994-2002 Ram 2500/3500 (6 1/2' Box)



INSTALLATION

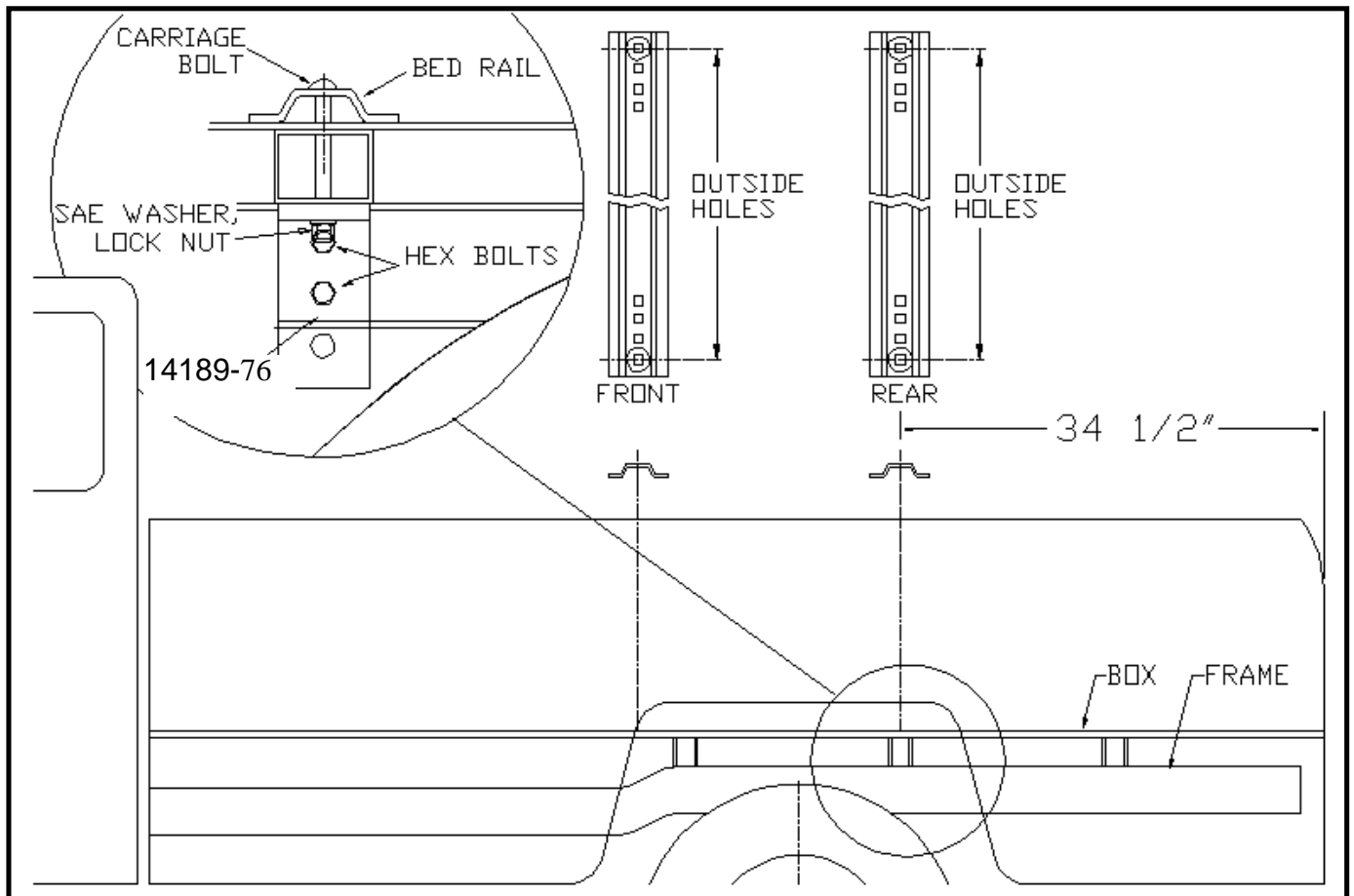
- Completely assemble hitch. See GENERAL INSTRUCTIONS and SAFETY supplied.
 - Set hitch into back of truck, center it side to side.
 - Measure 31" from back edge of truck box to square hole centers in rear bed rail.
- Check underneath box at bolt hole locations for any obstructions (frame members, etc.).
- Drill two 5/8" holes thru FRONT BED RAIL, OUTSIDE POSITION, as shown. Use OUTSIDE hole locations, front and rear. Drop in two bolts.
 - Drill two holes in REAR BED RAIL, OUTSIDE POSITION. Drop in two bolts. You will have to use two 5/8" x 5" long bolts to go through cross member.
- Under box, place washers (2" wide flat bar), 411 frame brackets (14189-76), flat washer and lock nuts onto bolts (4 places).
 - Press each bracket tight against frame member; tighten nuts snug against box.
- Pilot drill* and drill 1/2" holes into truck frame, at two places thru holes each frame bracket--BE CAREFUL OF ELECTRIC OR FLUID LINES behind frame members.
 - Brackets will be bolted onto frame by drilling frame and fishing knurl bolt (14266) through frame with fish wire (14238) and attach with hex nut (00083) and lock washer (00084) on outside of bracket.
 - TIGHTEN ALL BOLTS ACCORDING TO THE CHART ON FRONT PAGE.



INSTALLATION

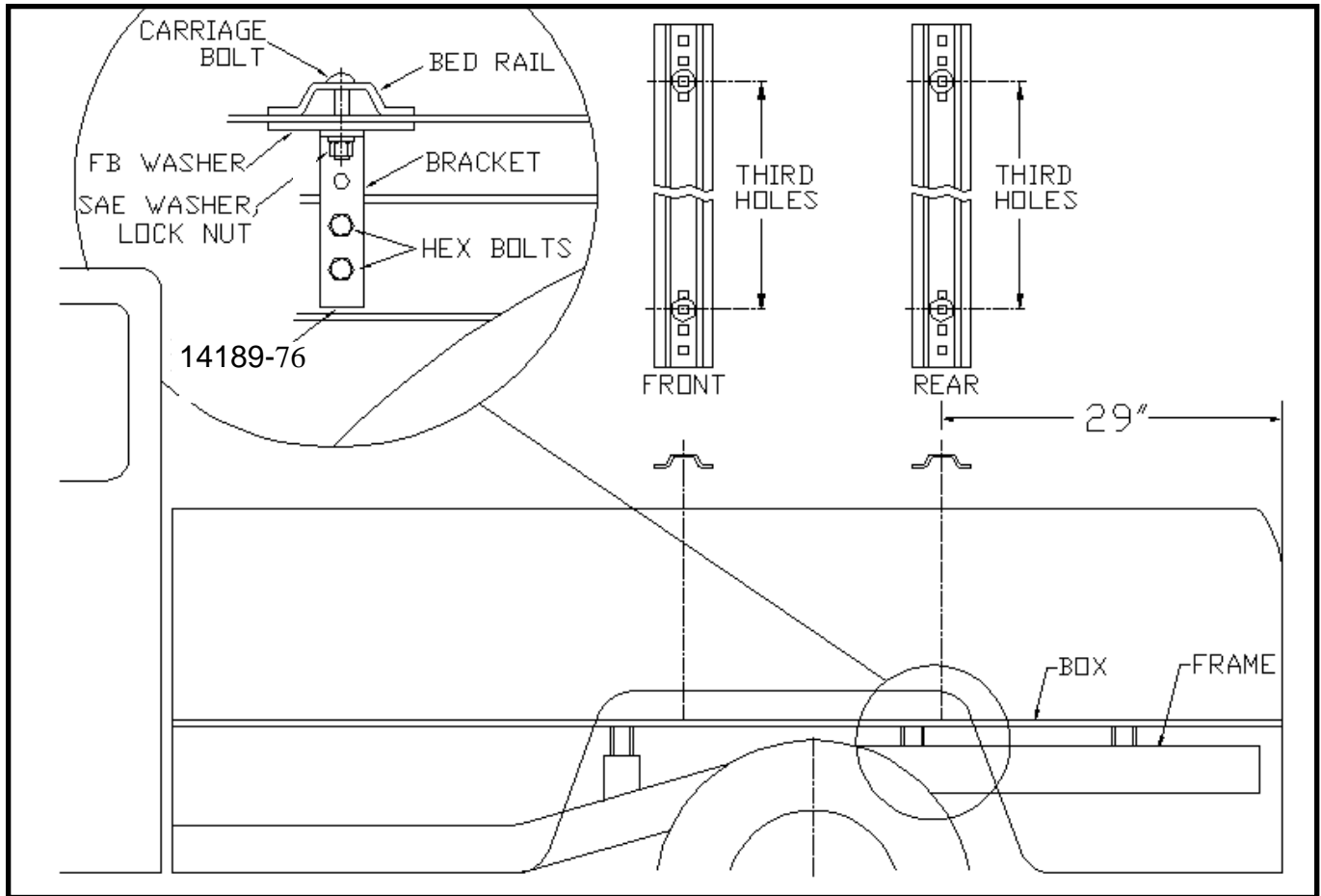
- Completely assemble hitch. See GENERAL INSTRUCTIONS and SAFETY supplied.
 - Set hitch into back of truck, center it side to side.
 - Measure 35 1/2" from back edge of truck box to square hole centers in rear bed rail.
- Check underneath box at bolt hole locations for any obstructions (frame members, etc.).
- Drill two 5/8" holes thru FRONT BED RAIL, OUTSIDE POSITION, as shown. Use OUTSIDE hole locations, front and rear. Drop in two bolts.
 - Drill two holes in REAR BED RAIL, OUTSIDE POSITION. Drop in two bolts. You will have to use two 5/8" x 5" long bolts to go through cross member.
- Under box, place washers (2" wid flat bar), 411 frame brackets (14189-76), flat washer and lock nuts onto bolts (4 places).
 - Press each bracket tight against frame member; tighten nuts snug against box.
- Pilot drill* and drill 1/2" holes into truck frame, at two places thru holes each frame bracket--BE CAREFUL OF ELECTRIC OR FLUID LINES behind frame members.
 - Brackets will be bolted onto frame by drilling frame and fishing knurl bolt (14266) through frame with fish wire (14238) and attach with hex nut (00083) and lock washer (00084) on outside of bracket.
 - TIGHTEN ALL BOLTS ACCORDING TO THE CHART ON FRONT PAGE.

DODGE: 1998-2001 Ram 1500 (8' Box)
1998-2002 Ram 2500/3500 (8' Box)



INSTALLATION

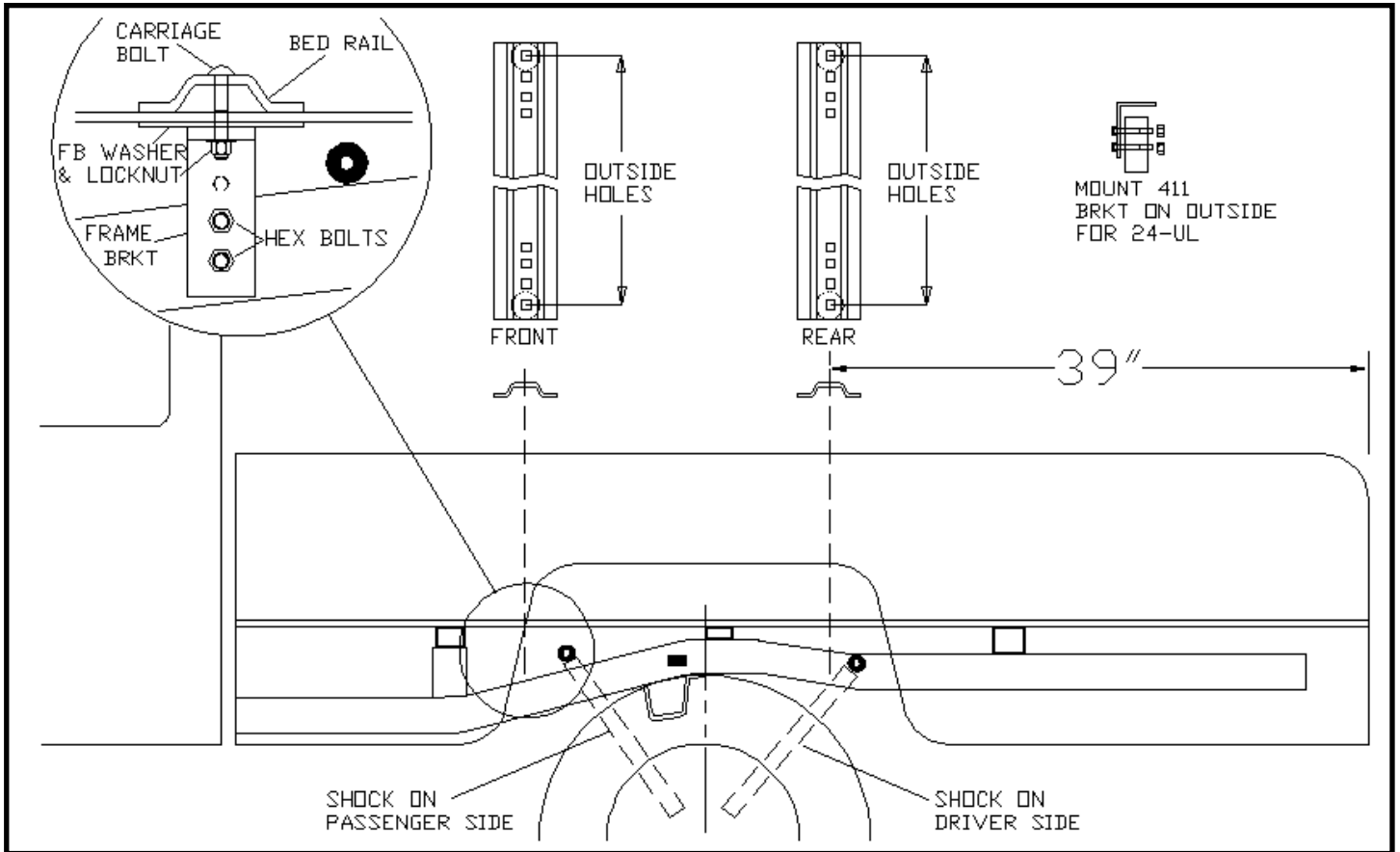
- Completely assemble hitch. See GENERAL INSTRUCTIONS and SAFETY supplied.
 - Set hitch into back of truck, center it side to side.
 - Measure 34 1/2" from back edge of truck box to square hole centers in rear bed rail.
- Check underneath box at bolt hole locations for any obstructions (frame members, etc.).
- Drill two 5/8" holes thru FRONT BED RAIL, OUTSIDE POSITION, as shown. Use OUTSIDE hole locations, front and rear. Drop in two bolts.
 - Drill two holes in REAR BED RAIL, OUTSIDE POSITION. Drop in two bolts. You will have to use two 5/8" x 5" long bolts to go through cross member.
- Under box, place washers (2" wide flat bar), 411 frame brackets (14189-76), flat washer and lock nuts onto bolts (4 places).
 - Press each bracket tight against frame member; tighten nuts snug against box.
- Pilot drill* and drill 1/2" holes into truck frame, at two places thru holes each frame bracket--BE CAREFUL OF ELECTRIC OR FLUID LINES behind frame members.
 - Brackets will be bolted onto frame by drilling frame and fishing knurl bolt (14266) through frame with fish wire (14238) and attach with hex nut (00083) and lock washer (00084) on outside of bracket.
 - TIGHTEN ALL BOLTS ACCORDING TO THE CHART ON FRONT PAGE.



INSTALLATION

- Completely assemble hitch. See GENERAL INSTRUCTIONS and SAFETY supplied.
 - Set hitch into back of truck, center it side to side.
 - Measure 29" from back edge of truck box to square hole centers in rear bed rail.
- Check underneath box at bolt hole locations for any obstructions (frame members, etc.).
- Drill two 5/8" holes thru FRONT BED RAIL, THIRD HOLE POSITION, as shown. NOTE: use OUTSIDE hole locations, front and rear, if desired.
 - Drill two holes in REAR BED RAIL, THIRD HOLE POSITION. Drop in two bolts.
- Under box, place washers (2" wid flat bar), 411 frame brackets (14189-76), flat washer and lock nuts onto bolts (4 places).
 - Press each bracket tight against frame member; tighten nuts snug against box.
- Pilot drill* and drill 1/2" holes into truck frame, at two places thru holes each frame bracket--BE CAREFUL OF ELECTRIC OR FLUID LINES behind frame members.
 - Brackets will be bolted onto frame by drilling frame and fishing knurl bolt (14266) through frame with fish wire (14238) and attach with hex nut (00083) and lock washer (00084) on outside of bracket.
 - TIGHTEN ALL BOLTS ACCORDING TO THE CHART ON FRONT PAGE.

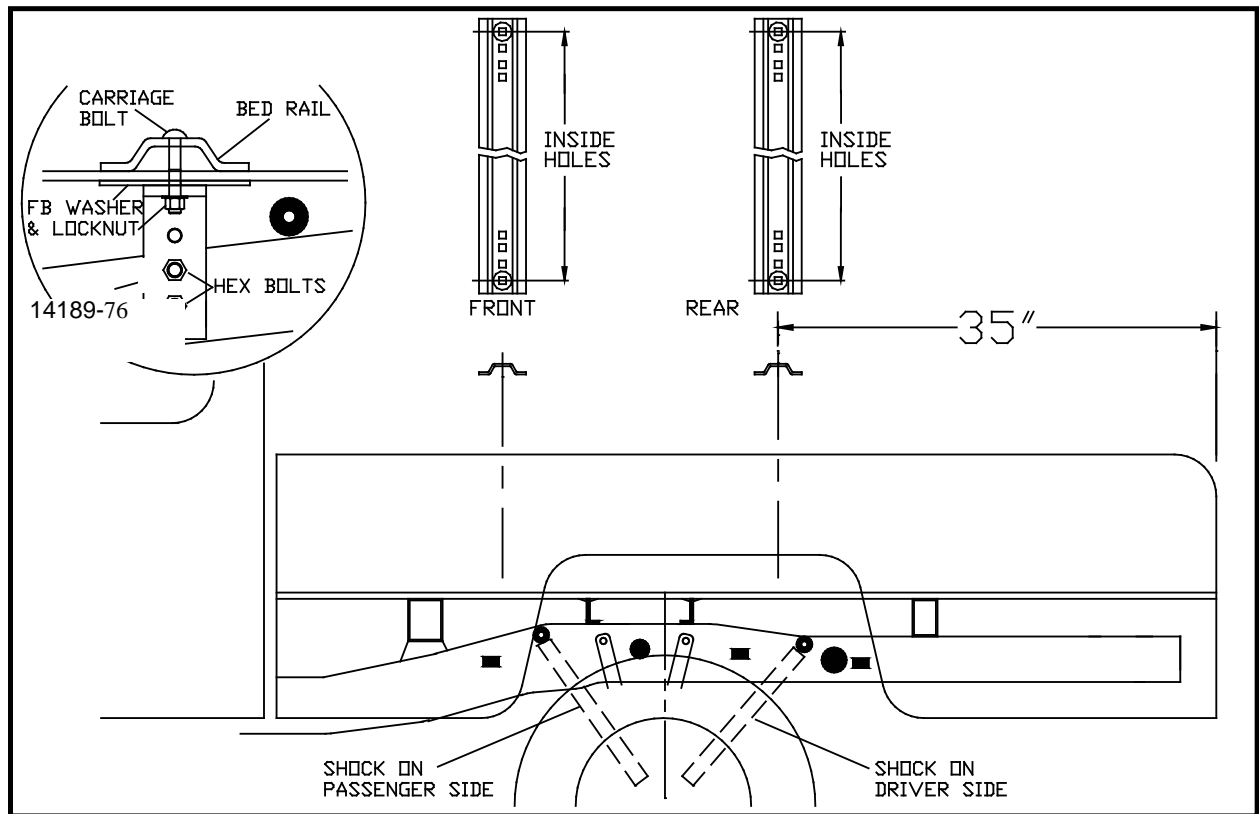
TOYOTA: 2000 & Earlier T100 Regular & Extends Cab (includes 4x4)



INSTALLATION

- Completely assemble hitch. See GENERAL INSTRUCTIONS and SAFETY supplied.
 - Set hitch into back of truck, center it side to side.
 - Measure 39" from back edge of truck box to square hole centers in rear bed rail. This places hitch 2" ahead of the axle.
- Check underneath box at bolt hole locations for any obstructions (frame members, etc.).
- Drill two 5/8" holes thru FRONT BED RAIL, OUTSIDE POSITION, as shown.
 - Drop in two 5/8" x 3 1/2" long bolts.
 - Drill two holes in REAR BED RAIL, OUTSIDE POSITION. Drop in two bolts.
- Under box, place washers (2" wid flat bar), 411 frame brackets (14189-76), flat washer and lock nuts onto bolts (4 places).
 - Press each bracket tight against frame member; tighten nuts snug against box.
- Pilot drill* and drill 1/2" holes into truck frame, at two places thru holes each frame bracket--BE CAREFUL OF ELECTRIC OR FLUID LINES behind frame members.
 - Brackets will be bolted onto frame by drilling frame and fishing knurl bolt (14266) through frame with fish wire (14238) and attach with hex nut (00083) and lock washer (00084) on outside of bracket.
 - TIGHTEN ALL BOLTS ACCORDING TO THE CHART ON FRONT PAGE.

TOYOTA: 2000-2006 Tundra Regular & Extended Cab (includes 4x4)



INSTALLATION

- Completely assemble hitch. See GENERAL INSTRUCTIONS and SAFETY supplied.
 - Set hitch into back of truck, center it side to side.
 - Measure 35" from back edge of truck box to square hole centers in rear bed rail. This places hitch 2" ahead of the axle.
- Check underneath box at bolt hole locations for any obstructions (frame members, etc.).
- Drill two 5/8" holes thru FRONT BED RAIL, OUTSIDE POSITION, as shown. Use OUTSIDE hole locations, front and rear. Drop in two 5/8" x 3 1/2" bolts.
 - Drill two holes in REAR BED RAIL, OUTSIDE POSITION. Drop in two 5/8" x 3 1/2" bolts.
- Under box, place washers (2" wid flat bar), 411 frame brackets (14189-76), flat washer and lock nuts onto bolts (4 places).
 - Press each bracket tight against frame member; tighten nuts snug against box.
- Pilot drill* and drill 1/2" holes into truck frame, at two places thru holes each frame bracket--BE CAREFUL OF ELECTRIC OR FLUID LINES behind frame members.
 - Brackets will be bolted onto frame by drilling frame and fishing knurl bolt (14266) through frame with fish wire (14238) and attach with hex nut (00083) and lock washer (00084) on outside of bracket.
 - TIGHTEN ALL BOLTS ACCORDING TO THE CHART ON FRONT PAGE.

Demco