



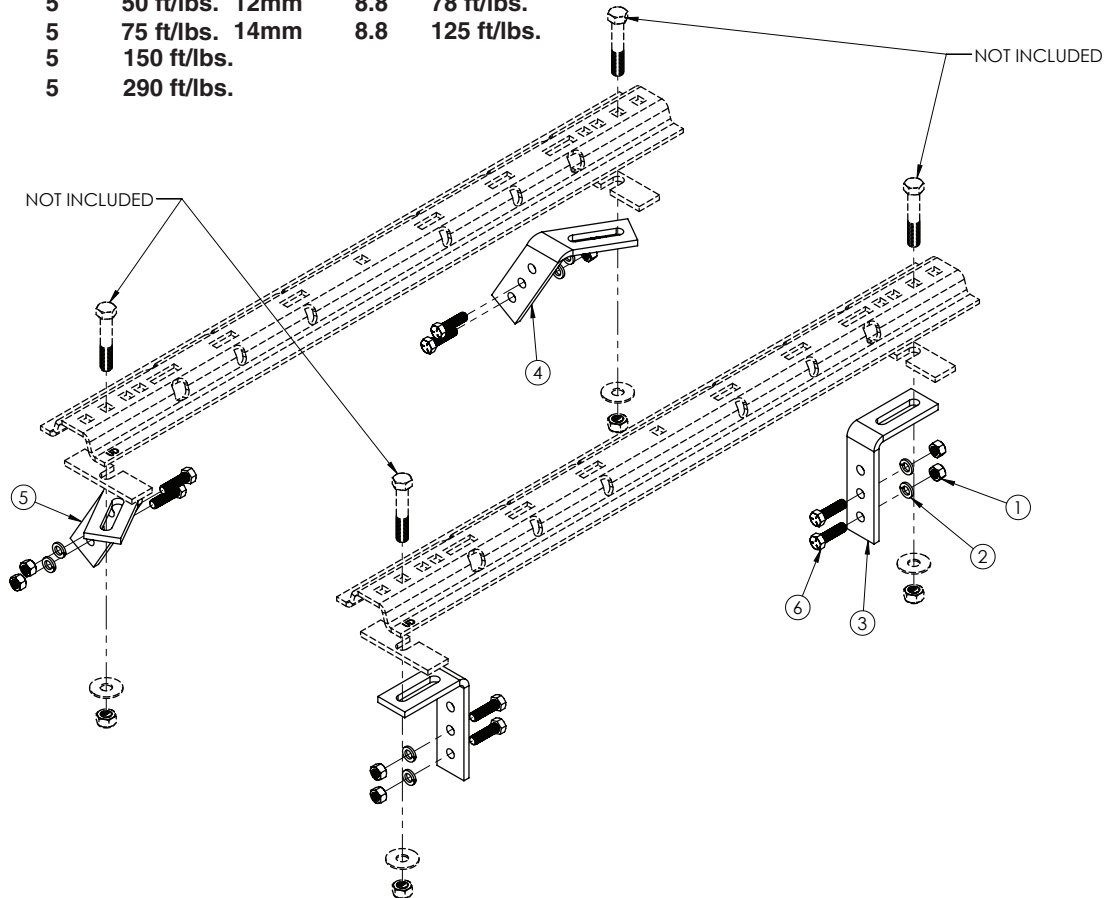
Ford
Dodge



BOLT TORQUE SPECIFICATIONS

STANDARD BOLTS			METRIC BOLTS		
Size	Grade	Torque	Size	Grade	Torque
5/16"	5	18 ft/lbs.	8mm	8.8	23 ft/lbs.
3/8"	5	30 ft/lbs.	10mm	8.8	45 ft/lbs.
7/16"	5	50 ft/lbs.	12mm	8.8	78 ft/lbs.
1/2"	5	75 ft/lbs.	14mm	8.8	125 ft/lbs.
5/8"	5	150 ft/lbs.			
3/4"	5	290 ft/lbs.			

FRAME BRACKET



8552005

REF. NO.	PART NO.	QTY.	DESCRIPTION
1.	00083	8	1/2" -NC Hex Nut
2.	00084	8	1/2" Lock Washer
3.	14189-76	2	Frame Bracket
4.	14194-76	1	411AL Frame Bracket Passenger Side
5.	14195-76	1	411AR Frame Bracket Driver Side
6.	14266	8	1/2" -NC x 1 3/4" Hex Bolt Knurl Gr.5
7.	14238	1	1/2" Fish Wire (not shown)

Please order replacement parts by **PART NO.** and **DESCRIPTION.**

ASSEMBLY
OPERATION
REPLACEMENT PARTS

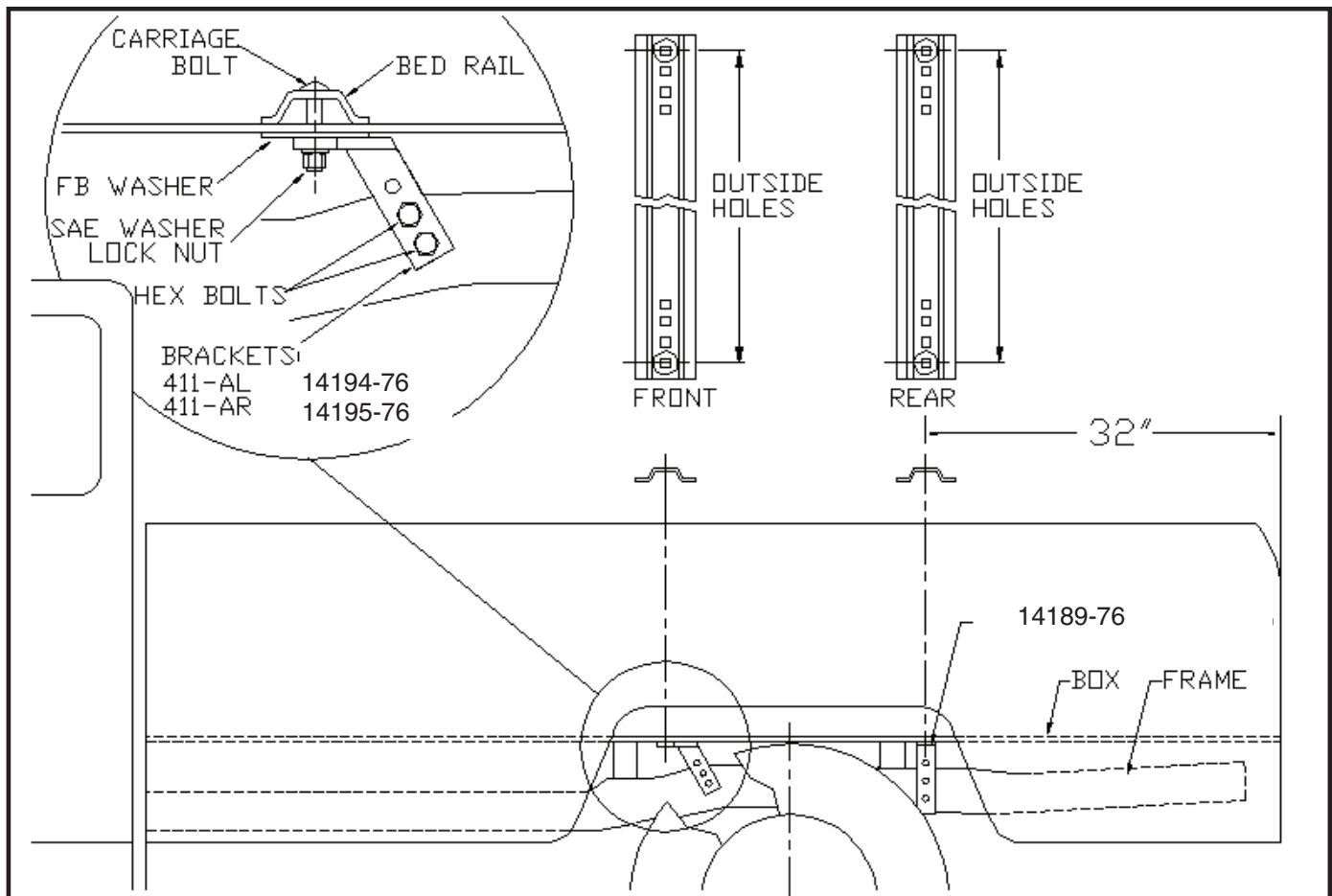
READ complete manual *CAREFULLY*
BEFORE attempting operation.

Doing Our Best to Provide You the Best

WARRANTY POLICY, OPERATOR MANUALS & REGISTRATION

Go online to review Demco warranty policies, operator manuals and register your Demco product.

FORD: 1973-1988 F Series
1989-1996 F150/F250 (6 1/2' & 8' Box)

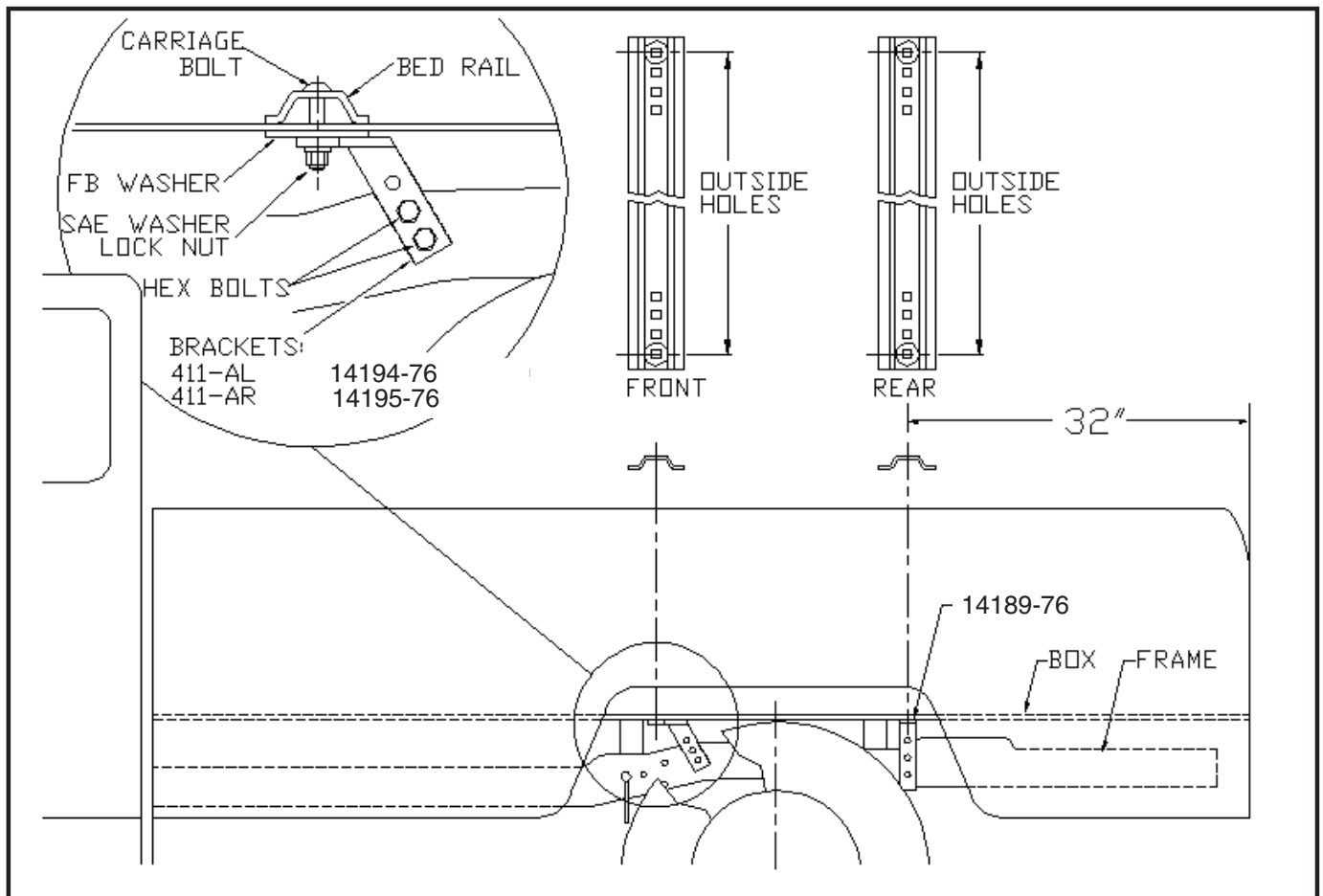


INSTALLATION

- Completely assemble hitch. See GENERAL INSTRUCTIONS and SAFETY supplied.
 - Set hitch into back of truck, center it side to side.
 - Measure 32" from back edge of truck box to square hole centers in rear bed rail.
- Check underneath box at bolt hole locations for any obstruction (frame members, etc.).
- Drill two 5/8" holes thru FRONT BED RAIL, OUTSIDE POSITION, as shown.
 - Insert two bolts.
 - Drill two 5/8" holes in REAR BED RAIL, OUTSIDE POSITION. Insert two bolts.
- Under box, place 2" wide flat bar, the 411AL (14195-76), 411AR (14194-76) and 411 frame brackets (14189-76), flat washers and lock nuts onto bolts.
 - Press each bracket tight against frame member; tighten nuts snug against box.
- Pilot drill* and drill 1/2" hole into truck frame, at two places thru holes each frame bracket -- BE CAREFUL OF ELECTRIC OR FLUID LINES behind frame members.
 - Brackets will be bolted onto frame by drilling frame and fishing knurl bolt (14266) through frame with fish wire (14238) and attach with hex nut (00083) and lock washer (00084) on outside of bracket.
 - TIGHTEN ALL BOLTS ACCORDING TO CHART ON FRONT PAGE.

* To pilot drill: Use 1/2" drill bit or transfer punch to mark center. Drill thru with 1/4" drill.

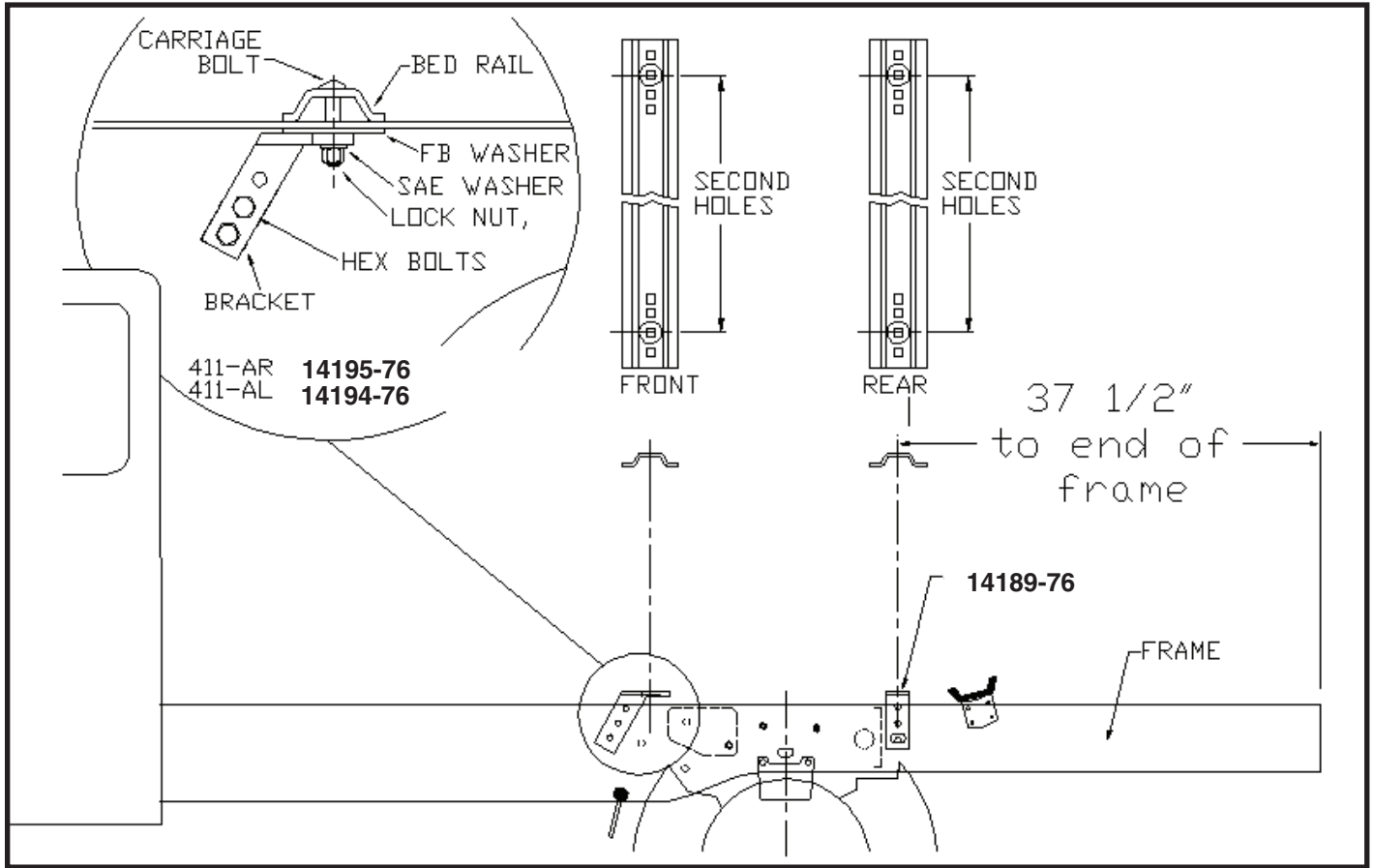
FORD: 1992-1998 F350 (8' Box)
 1997-1998 F250 Heavy Duty (6 1/2' & 8' Box)



INSTALLATION

1. a. Completely assemble hitch. See GENERAL INSTRUCTIONS and SAFETY supplied.
 b. Set hitch into back of truck, center it side to side.
 c. Measure 32" from back edge of truck box to square hole centers in rear bed rail.
2. Check underneath box at bolt hole locations for any obstruction (frame members, etc.).
3. a. Drill two 5/8" holes thru FRONT BED RAIL, OUTSIDE POSITION, as shown.
 b. Insert two bolts.
 c. Drill two 5/8" holes in REAR BED RAIL, OUTSIDE POSITION. Insert two bolts.
4. a. Under box, place 2" wide flat bar, the 411AL (14195-76), 411AR (14194-76) and 411 frame brackets (14189-76), flat washers and lock nuts onto bolts (4 places).
 b. Press each bracket tight against frame member; tighten nuts snug against box.
5. a. Pilot drill* and drill 1/2" hole into truck frame, at two places thru holes each frame bracket -- BE CAREFUL OF ELECTRIC OR FLUID LINES behind frame members.
 b. Brackets will be bolted onto frame by drilling frame and fishing knurl bolt (14266) through frame with fish wire (14238) and attach with hex nut (00083) and lock washer (00084) on outside of bracket.
 c. **TIGHTEN ALL BOLTS ACCORDING TO CHART ON FRONT PAGE.**

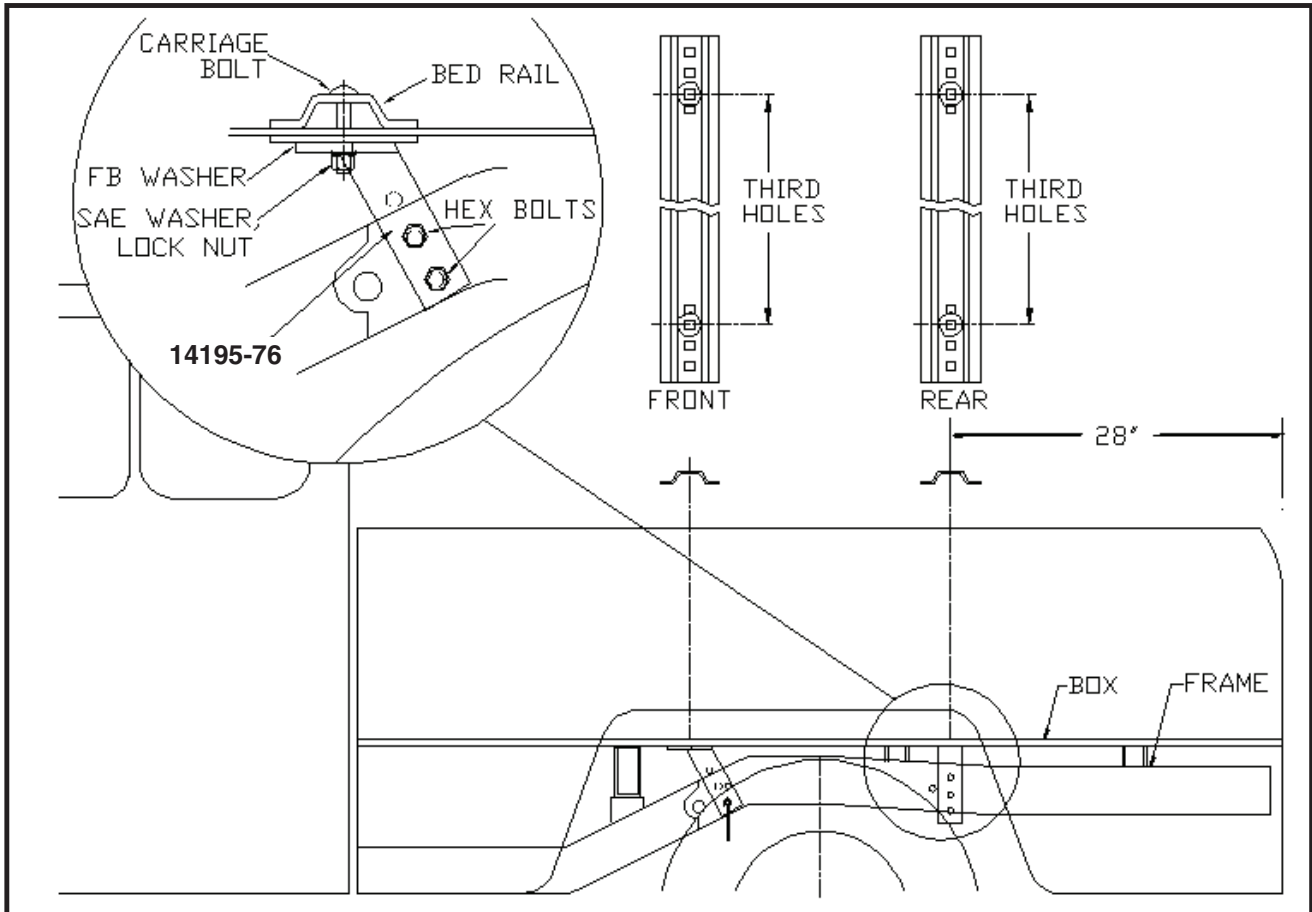
* To pilot drill: Use 1/2" drill bit or transfer punch to mark center. Drill thru with 1/4" drill.



INSTALLATION

1. a. Completely assemble hitch. See GENERAL INSTRUCTIONS and SAFETY supplied.
 b. Set hitch into back of truck, center it side to side.
 c. Measure 37 1/2" from back edge of truck **frame** to square hole centers in rear bed rail.
2. Check underneath box at bolt hole locations for any obstruction (gas line, wiring, etc.).
3. a. Drill two 5/8" holes thru FRONT BED RAIL, SECOND HOLE POSITION, as shown.
 b. Insert two 5/8" x 3 1/2" bolts.
 c. Drill two 5/8" holes in REAR BED RAIL, SECOND HOLE POSITION. Insert two 5/8" x 3 1/2" bolts.
4. a. Under box, place 2" wide flat bar, the 411AL (14195-76), 411AR (14194-76) and 411 frame brackets (14189-76), flat washers and lock nuts onto bolts (4 places).
 b. Press each bracket tight against frame member; tighten nuts snug against box.
5. a. Pilot drill* and drill 1/2" hole into truck frame, at two places thru holes each frame bracket -- BE CAREFUL OF ELECTRIC OR FLUID LINES behind frame members.
 b. Brackets will be bolted onto frame by drilling frame and fishing knurl bolt (14266) through frame with fish wire (14238) and attach with hex nut (00083) and lock washer (00084) on outside of bracket.
 c. TIGHTEN ALL BOLTS ACCORDING TO CHART ON FRONT PAGE.

* To pilot drill: Use 1/2" drill bit or transfer punch to mark center. Drill thru with 1/4" drill.



INSTALLATION

1. a. Completely assemble hitch. See GENERAL INSTRUCTIONS and SAFETY supplied.
b. Set hitch into back of truck, center it side to side.
c. Measure 28" from back edge of truck box to square hole centers in rear bed rail.
2. Check underneath box at bolt hole locations for any obstruction (frame members, etc.).
3. a. Drill two 5/8" holes thru FRONT BED RAIL, THIRD HOLE POSITION, as shown - **NOTE:** use OUTSIDE hole locations instead, front and rear, if desired.
b. Insert two bolts. ** (5/8" x 3" hex head Gr.5 bolts can be substituted instead of using the bolts because of space restrictions under the box. This will allow the bolts to be easily tightened from up top).
c. Drill two holes in REAR BED RAIL, THIRD HOLE POSITION. Insert two bolts.
4. a. Under box, place 2" wide flat bar, the 411AL (14195-76), 411AR (14194-76) and 411 frame brackets (14189-76), flat washers and lock nuts onto bolts (4 places).
b. Press each bracket tight against frame member; tighten nuts snug against box.
5. a. Pilot drill* and drill 1/2" hole into truck frame, at two places thru holes each frame bracket -- BE CAREFUL OF ELECTRIC OR FLUID LINES behind frame members.
b. Brackets will be bolted onto frame by drilling frame and fishing knurl bolt (14266) through frame with fish wire (14238) and attach with hex nut (00083) and lock washer (00084) on outside of bracket.
c. **TIGHTEN ALL BOLTS ACCORDING TO CHART ON FRONT PAGE.**

* To pilot drill: Use 1/2" drill bit or transfer punch to mark center. Drill thru with 1/4" drill.