

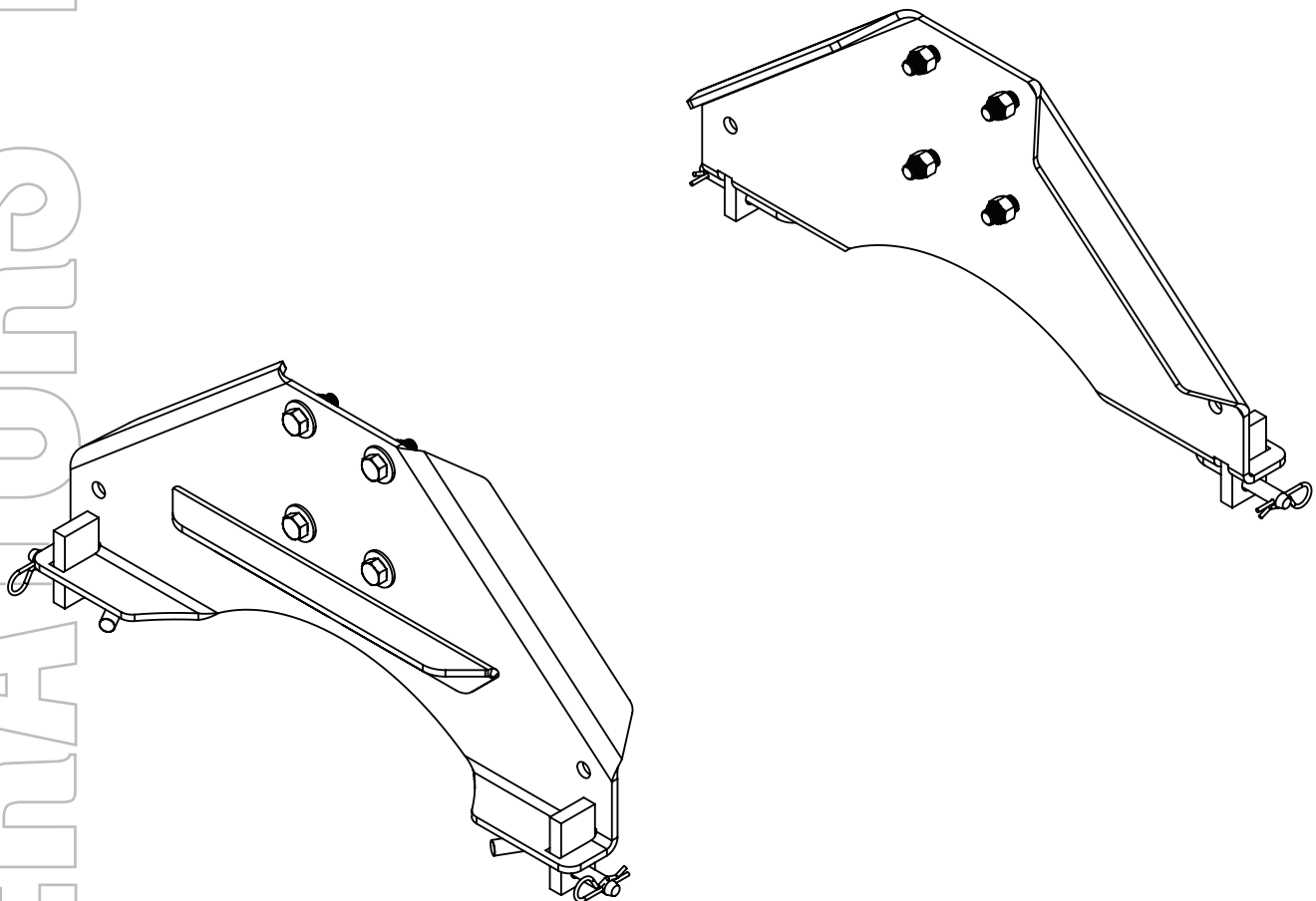


4/16
HJ26060 Rev 3



5th Wheel Side Rail Assemblies

6060 PREMIER/UL SIDE RAIL

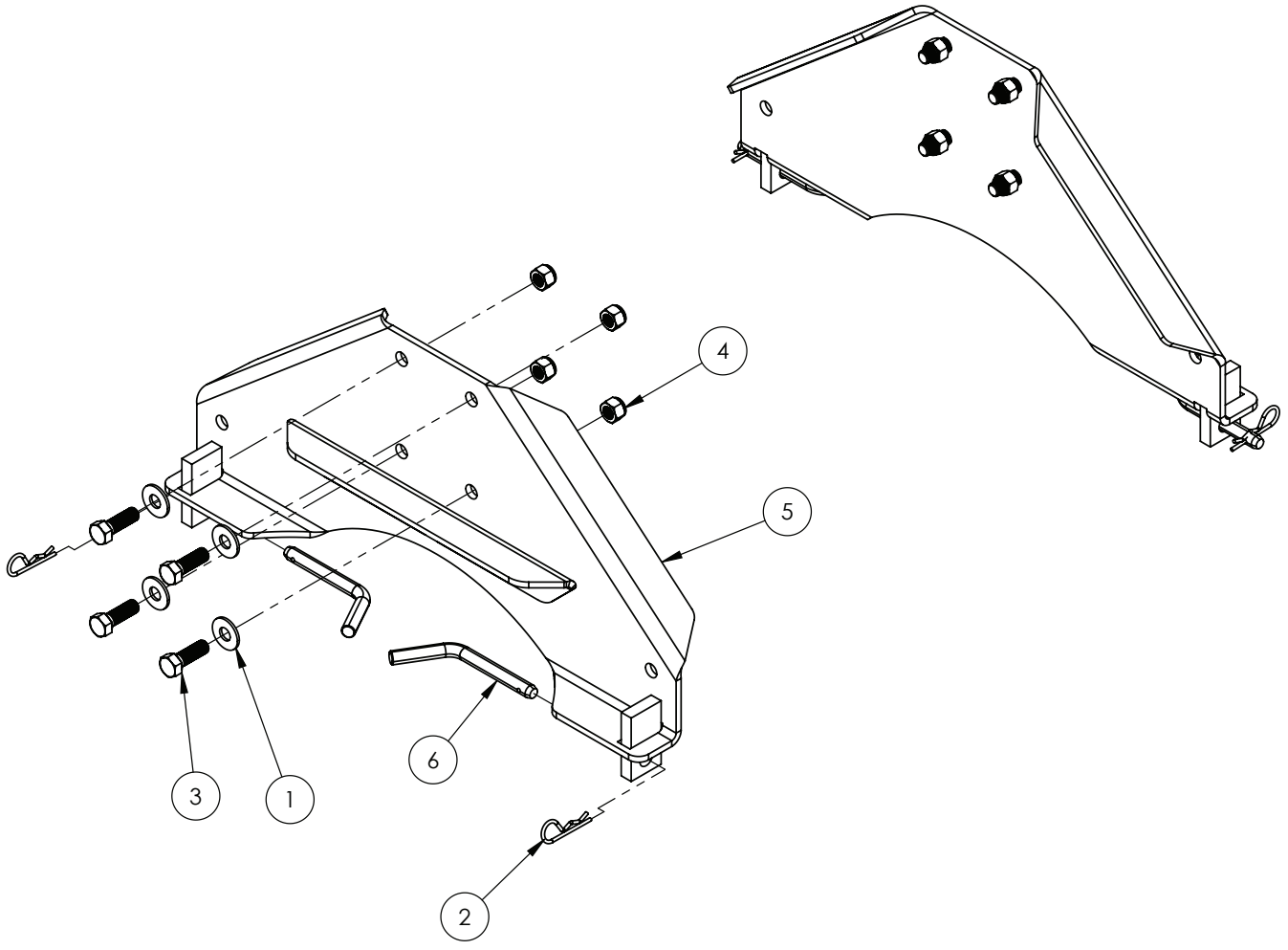


READ *complete manual CAREFULLY
BEFORE attempting operation.*

Doing Our Best to Provide You the Best

OPERATORS MANUAL

6060 Parts Breakdown



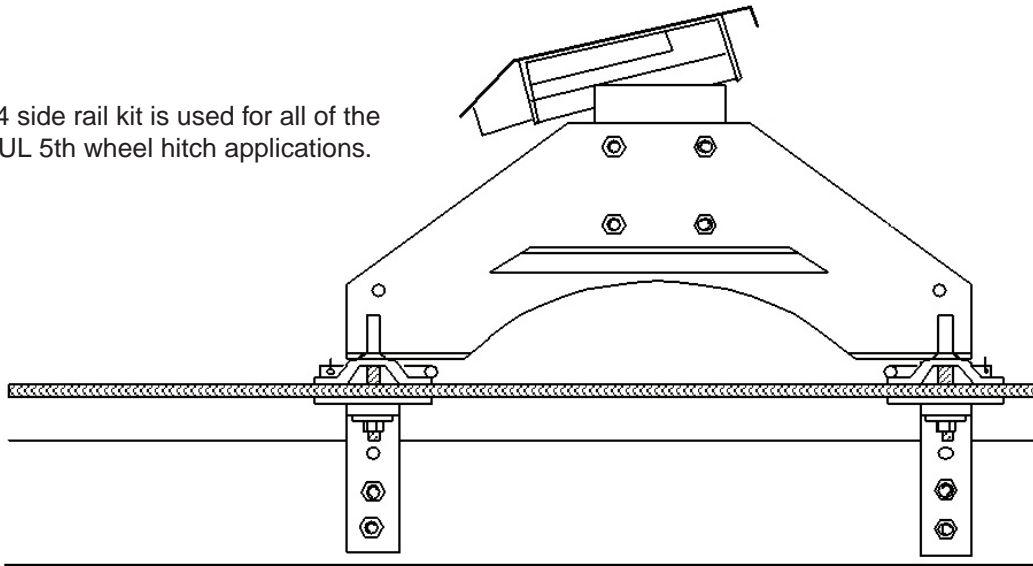
6060 Parts Breakdown

ITEM	PART #	QTY	DESCRIPTION
1	00085	8	.50 FLAT WASHER
2	00182	4	HAIR PIN
3	01254	8	BOLT, .50 NC X 1.50 GR.5 HEX
4	02178	8	NUT, .50 NC LOCK, NY. INSERT
5	14163-76	2	PREMIER/UL SIDE RAIL, 5TH WHEEL
6	14566-95	4	ATTACHING PIN

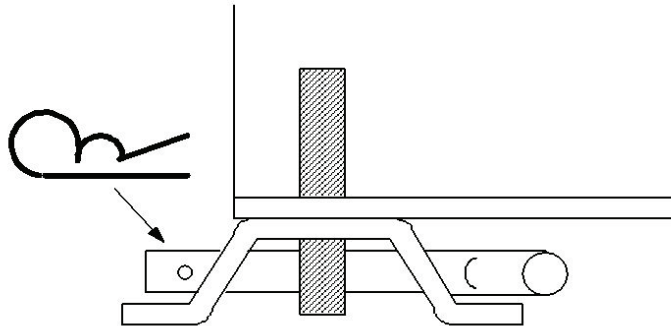
Please order replacement parts by PART NO. and DESCRIPTION.

6060 Installation Instructions

The 5994 side rail kit is used for all of the Premier/UL 5th wheel hitch applications.



Install bedrail pull pins from under the side rail so that the hitch pin secures in the open.



1. The correct height for the hitch is such that there is approximately 6" of clearance between the top of the truck box and the bottom of the trailer overhang. All Hijacker hitches have 4" of adjustment up or down in 1" increments.
2. Once the proper height has been determined, bolt the hitch saddle and side rail assemblies together and pin them into the bed rails.
3. The ideal location for the center of the hitch is directly over the axle to up to 3" ahead of it, and it must be centered side to side in the box of the truck. As noted above, specific install instructions for the different vehicles are available.
4. When hitch and rail assembly are in the proper position, make sure that the bed rails are parallel to each other. Drill four 5/8" holes, 2 per bed rail, through the bed of the truck using the square holes as guides. There are 4 square holes on the ends of the bed rails to choose from. The most commonly used hole is the outer hole, but some installations may require using the middle holes or the inner most hole. Check the distance of the truck frame at the point where the bed rails sit above it to determine the best holes to use or use which ever holes the specific install instruction states to use (see Important Notice above). Drop in a 5/8" x 3 1/2" carriage bolt through the holes as they are drilled to prevent any movement during installation.
5. Securely fasten the frame brackets underneath (see other side of page) by pushing them up against the frame and tightening up the nut. Next drill two holes thru the frame and use the 1/2" x 1 1/2" bolts, nuts, and flat washers to secure the brackets to the frame.