

**Before returning this product
to the store of purchase**

Contact Dee Zee if you experience the following problems:

- Missing Parts
- Installation Problems/Questions
- Warranty Questions



INSTALLATION INSTRUCTION
SIDE BAR PART#DZ 371231/371232/371233
 02-07 Dodge Pickup Ram Quad Cab
 1500/2500/3500

QTY	DESCRIPTION
1	Side Bar, left side
1	Side Bar, right side
1	Hardware kit

NOTE: Please read this information before installing. Check components received with components listed above.

Step One: Locate hardware kit. Check contents with the hardware listed below.

QTY	DESCRIPTION
2	front mounting bracket-short
2	rear mounting bracket-long
2	front support bracket
2	rear support bracket
2	rear bolt plate
2	1/2" x 1-1/2 hex bolt zinc plated
4	3/8" x 1-1/2 hex bolt zinc plated
10	3/8" flat washer-zinc plated
6	3/8" split lock washer-zinc plated
6	3/8 x 16 hex nut-zinc plated
2	1/2" x 13 hex nut-zinc plated
4	1/2" x 2" hex bolt-zinc plated
10	1/2" lock washer-zinc plated
12	1/2" flat washer-zinc plated
4	12mm x 120mm Hex Bolt-zinc plated
4	Spacer Plates
4	3" Plastic Rings

Step Two: Remove the front and rear body mount bolts.

Step Three: Locate the two short mounting brackets and loosely install them to the front body mount locations with the 12mm x 120mm bolts, 1/2" flat and lock washers, and spacer plates as per fig 1 and fig 4.

Step Four: Repeat this process using the long mounting brackets for the rear body mounts fig 2.

Step Five: Place the side bars into position. Using the 1/2" x 2" bolts, 3" plastic rings, and 1/2" lock and flat washers, loosely attach the side bars to the brackets. (NOTE: To determine which side bar is the left or right, Check the number on the welded insert at the end of the tube.)

Step Six: Place the rear bolt plate through the body as shown in fig 3. Attach support bracket as shown in fig. 2 using supplied 3/8 hardware. Next attach front support brackets as shown in Fig. 1 using supplied 1/2" hardware on the top bolt and 3/8" hardware on the bottom bolt

Step Seven: After checking to make sure the side bars are level and parallel with the sides of the vehicle completely tighten all hardware.

Step Eight: Periodically check and retighten the hardware as necessary.

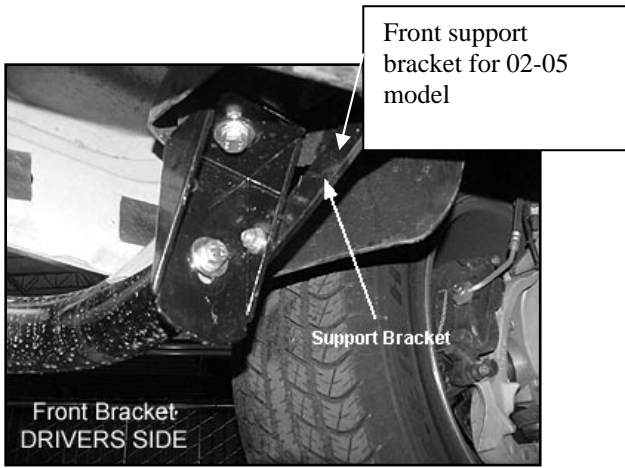


FIG. 1

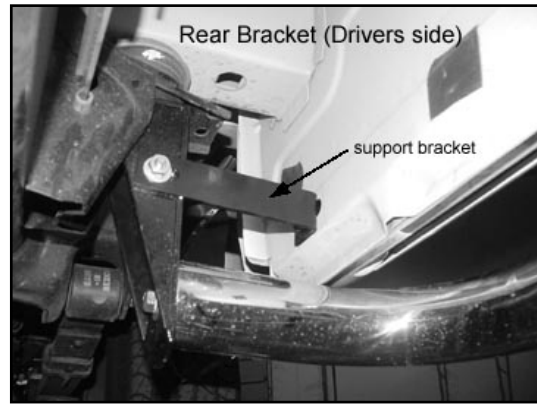


FIG. 2

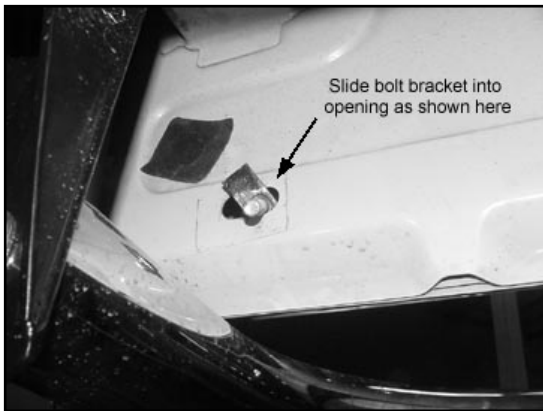


FIG. 3

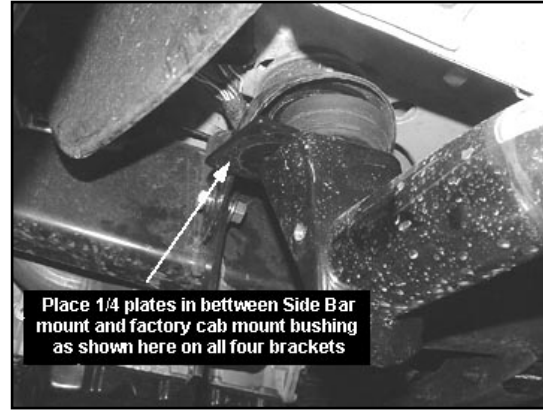


FIG. 4

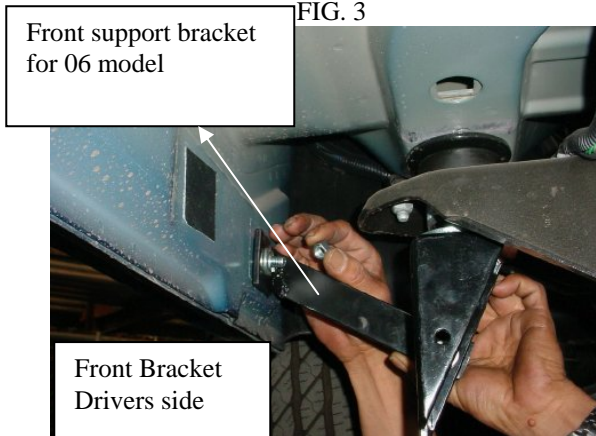


FIG. 5