

**Before returning this product
to the store of purchase**

Contact Dee Zee if you experience the following problems:

- Missing Parts
- Installation Problems/Questions
- Warranty Questions



INSTALLATION INSTRUCTIONS

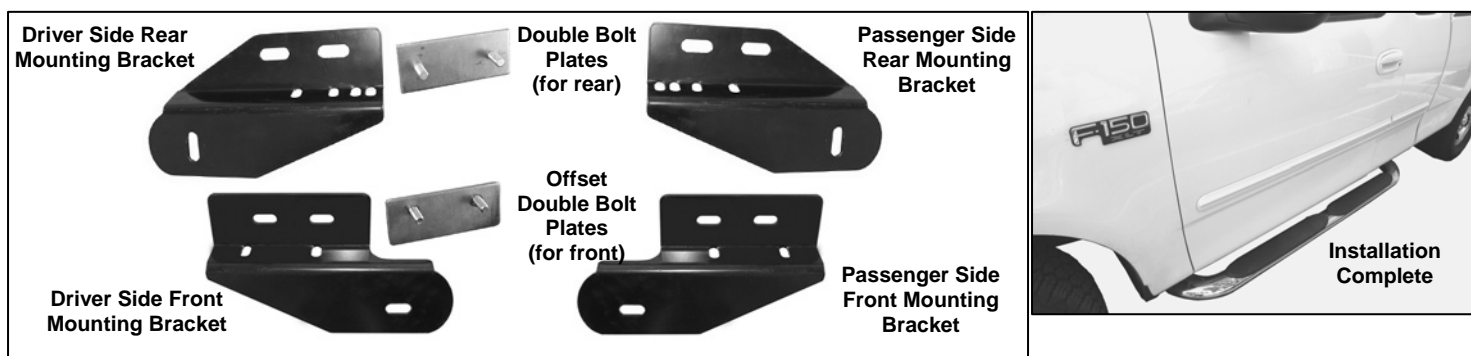
3" & 4" 90DEG BENT END SIDEBARS

99-03, 04 HERITAGE FORD SUPER CAB F-150, F-250 LIGHT DUTY

PART NUMBER

PARTS LIST:

1	Driver/Left Sidebar	2	10mm Offset Double Bolt Plates (for front)
1	Passenger/Right Sidebar	2	10mm Double Bolt Plates (for rear)
1	Driver/Left Front Mounting Bracket	8	10mm ID x 27mm OD x 3mm Flat Washers
1	Passenger/Right Front Mounting Bracket	8	10mm Lock Washers
1	Driver/Left Rear Mounting Bracket	8	10mm Hex Nuts
1	Passenger/Right Rear Mounting Bracket	8	8mm x 25mm Hex Bolts
4	1/2" x 2" Hex Head Bolts	16	8mm x 24mm OD x 2mm Flat Washers
4	1/2" Lock Washers	8	8mm Lock Washers
4	1/2" ID x 1-1/2" OD x 1/8 Flat Washers	8	8mm Hex Nuts



PROCEDURE:

- 1. REMOVE CONTENTS FROM BOX. VERIFY ALL PARTS ARE PRESENT. READ INSTRUCTIONS CAREFULLY BEFORE STARTING INSTALLATION.**
- From underside of the vehicle, remove the driver side front oval grommet located on the side panel, (**Figure 1**). Insert (1) Offset Double Bolt Plate into factory oval hole, (**Figure 2**).
- Locate driver side front Mounting Bracket. Hold Double Bolt Plate from one side while you position and attach Mounting Bracket to opposite side. Once you secure the Bolt Plate with one nut, lock washer and flat washer, proceed to attach the second nut on the Double Bolt Plate. Use the included (2) 10mm Hex Nuts, (2) 10mm Lock Washers and (2) 10mm Flat Washers, (**Figure 3A, 3B**). Do not tighten at this time.
- Align bracket with holes in pinch weld. Attach the Mounting Bracket to pinch weld using the included (2) 8mm x 25mm Hex Head Bolts, (2) 8mm Lock Washers, (4) 8mm Flat Washers and (2) 8mm Hex Nuts. **NOTE:** Insert Bolt with Flat Washer from the outside-in. Do not tighten at this time.
- For the rear, use one of the Double Bolt Plates with bolts in the center to install the Rear Bracket. Repeat steps 2 – 4 for driver side rear Mounting Bracket. Depending on application, pinch weld area may align with only one hole from the factory. If desired, installer may drill through Pinch Weld for second Pinch Weld bolt. Do not drill for second hole until the Sidebar

has been installed and adjusted to properly locate the Mounting Bracket. Do not tighten at this time.

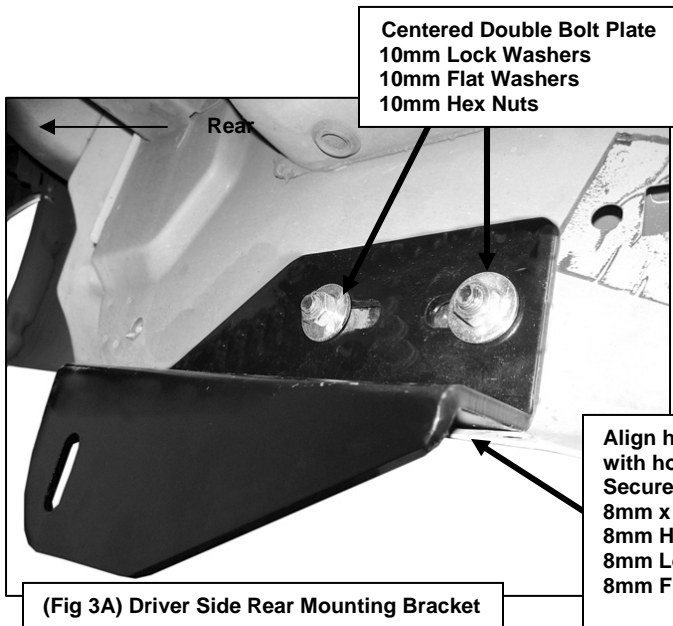
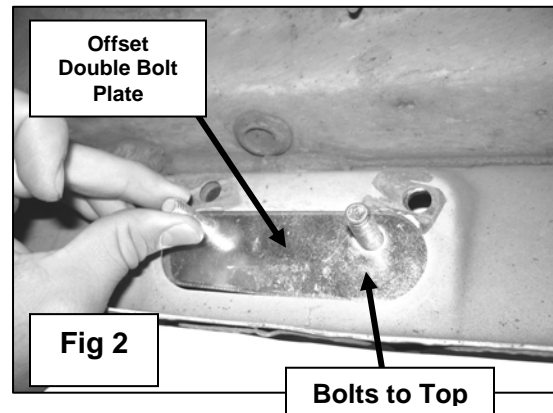
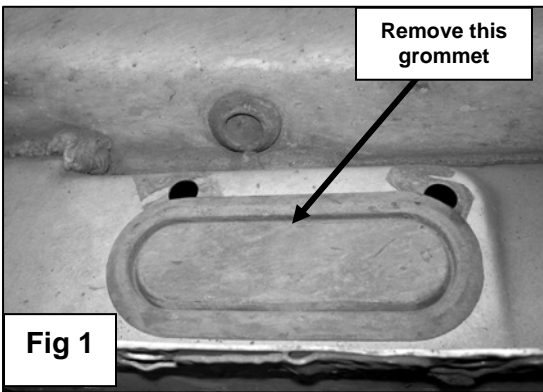
6. Once the Mounting Brackets are partially mounted, carefully unpack and separate the Driver and Passenger Sidebar. Position Sidebar onto Mounting Brackets using the included (2) 1/2" x 2" Hex Head Bolts, (2) 1/2" Lock Washers, and (2) 1/2" Flat Washers. Do not tighten at this time.
7. Level and adjust Sidebar, drill for second Pinch Weld Bolt if desired, then tighten all hardware at this time.
8. Repeat steps 2 – 7 for passenger Sidebar.
9. Do periodic inspections of the installation to make sure all hardware is secure and tight.

To protect your investment, wax this product after installing. Regular waxing is recommended to add a protective layer over the finish. Do not use any type of polish or wax that may contain abrasives that could damage the finish.

For stainless steel: Aluminum polish may be used to polish small scratches and scuffs on the finish. Mild soap may be used also to clean the Sidebar.

For gloss black finishes: Mild soap may be used to clean the Sidebar.

Front Bolt Plate Installation Example



Align holes in brackets
with holes in pinch weld.
Secure with:
8mm x 25mm Hex Bolts
8mm Hex Nuts
8mm Lock Washers
8mm Flat Washers

