

**Before returning this product
to the store of purchase**

Contact Dee Zee if you experience the following problems:

- Missing Parts
- Installation Problems/Questions
- Warranty Questions



Dee Zee Running Board Installation Instructions

Congratulations on your purchase of a quality Dee Zee product. Dee Zee is recognized as having the highest quality running boards and accessories on the market today. We have earned this reputation by offering our customers a product they can be proud to place on their vehicles. Dee Zee meets all the criteria of manufacturing a custom-fit product which guarantees it to be the easiest product to install.

Note: Please take time to read all of the instructions before beginning this installation.

Warning! Please check for wiring or other obstructions before drilling any holes into the vehicle. If it is necessary to drill any holes into the vehicle, Dee Zee recommends putting a sealant or rust inhibitor around all holes drilled into the body of the vehicle.

Warning! It is the sole responsibility of the vehicle owner to check for tire clearance.

Warning! It is unlawful and dangerous to ride on running boards or side box boards while the vehicle is in motion.

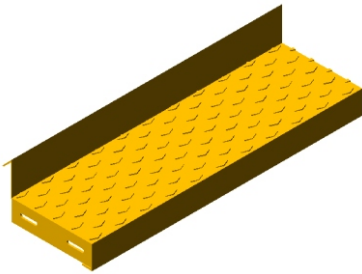
Cleaning Instructions: To maintain the bright finish of your Dee Zee running boards, clean with a mild detergent. For our stainless steel products and accessories, the application of a high grade automotive type wax is recommended.

Dee Zee Britetread Running Board Installation Instruction

DZ 1051

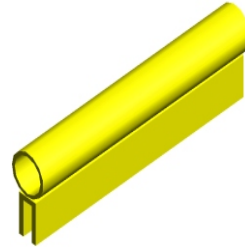
(1999 -Current) Chevy Regular Cab Pickup

A Britetread Running Board



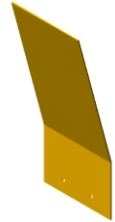
X2

B Bulb Seal Gasket



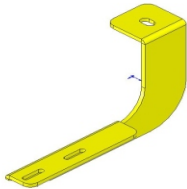
9.5 ft.

C Mudflaps



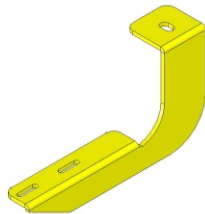
X2

E Front Driver Side Body Mount Bracket



X1

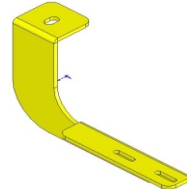
F Rear Driver Side Body Mount Bracket



X1

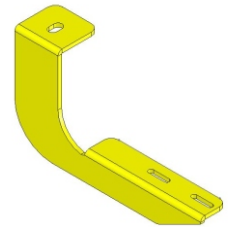
NOTE: This will be the shortest bracket in the kit.

G Front Passenger Side Body Mount Bracket



X1

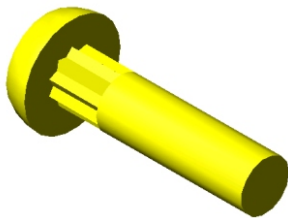
H Rear Passenger Side Body Mount Bracket



X1

NOTE: This will be the shortest bracket in the kit.

J 1/4 x 3/4" Carriage Head Bolt



PN 87

X8

K 1/4" Flat Washer



PN 72

X12

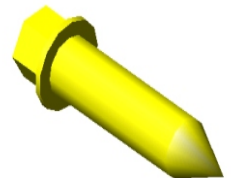
L 1/4" Hex Nut



PN 71

X12

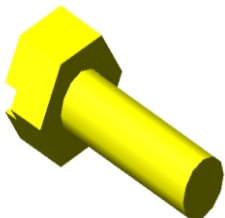
M 1/4 x 1" Sheet Metal Screw



PN 97

X4

N 1/4 x 3/4" Hex Head Bolt



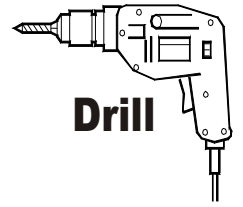
PN 70

X4

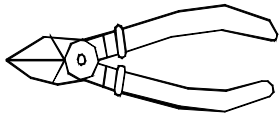
X1

Tools Required:

Ratchet / Wrench



Drill



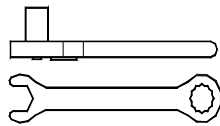
Tin-snips

Sizes:

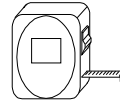
18mm

7/16"

3/8"



Tape Measure

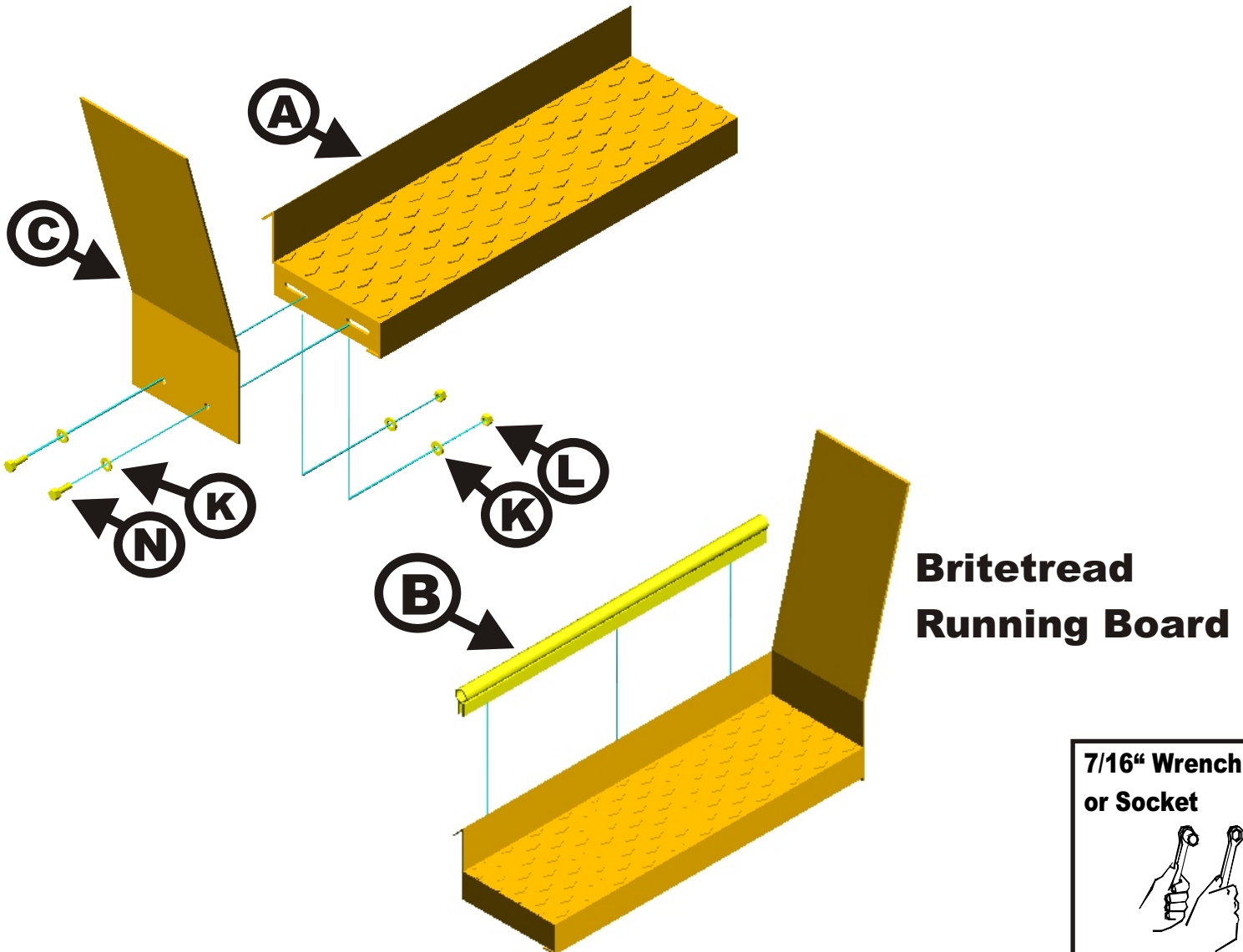


3/16" Drillbit

1/4" Drillbit

1

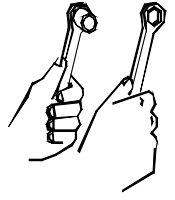
Secure britetread mudflap (C) to britetread running board (A) using 1/4 x 3/4" hex head bolts (N), 1/4" flat washers (K), and 1/4" hex nuts (L). Tighten into place using a 7/16" wrench / or socket. Place bulb-seal gasket (B) onto the backlip of britetread running board (A) and trim flush with the britetread mudflap (C) and the end of britetread running board (A).



2

Locate and remove the front / rear body mount bolts shown below using an 18mm socket/ratchet. Do not discard the body mount bolt or rubber bushing. They will be used in the next step of this installation.

**18mm Wrench
or Socket**



Front Body Mount



Rear Body Mount

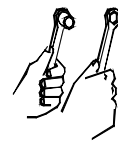


3

Front / Rear

Place the body mount bolt through the hole in the front body mount bracket and the rubber bushing. Place this assembly up to the body mount locations and tighten into place. See below.

18mm Wrench
or Socket



Front Body Mount

(Driver Side shown)



Rear Body Mount

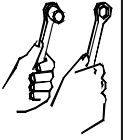
(Looking towards the front of the truck)



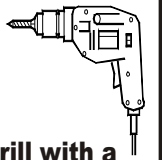
4

Place the running board up to the front / rear body mount brackets. Make any final adjustments to the alignment of the running board on the vehicle and then use the existing slots in the body mount brackets to drill 1/4" holes through the running board. Secure into place using 1/4 x 1" ribneck carriage head bolts (J), 1/4" flat washers (K), and 1/4" flat washers (L). Tighten into place using a 7/16" wrench / or socket. Note: It is important that all adjustments to the running board and side box board alignment are made prior to drilling any holes in the board.

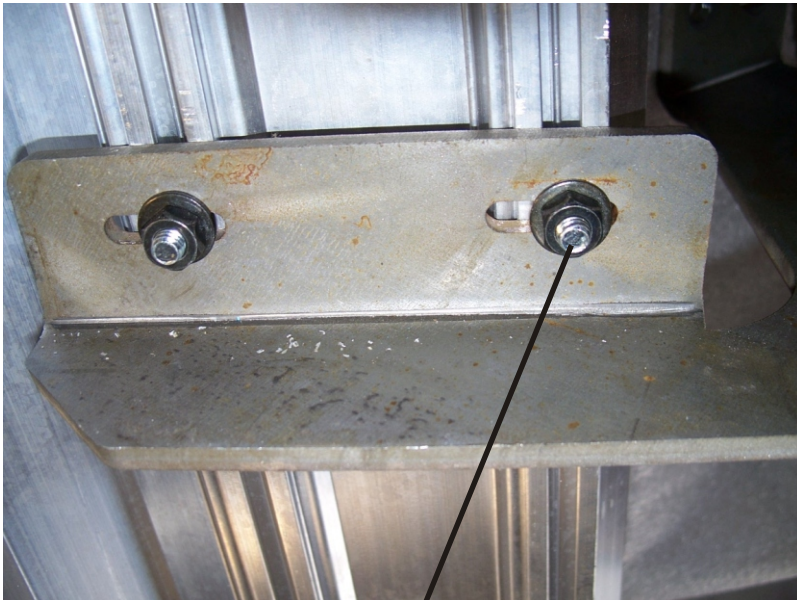
7/16" Wrench
or Socket



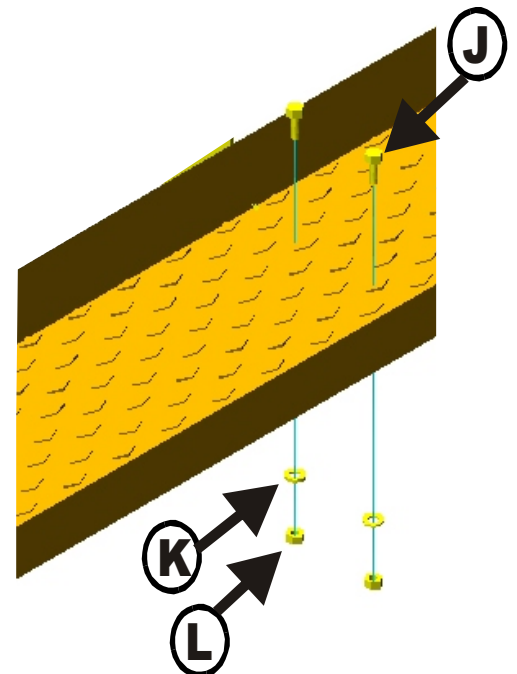
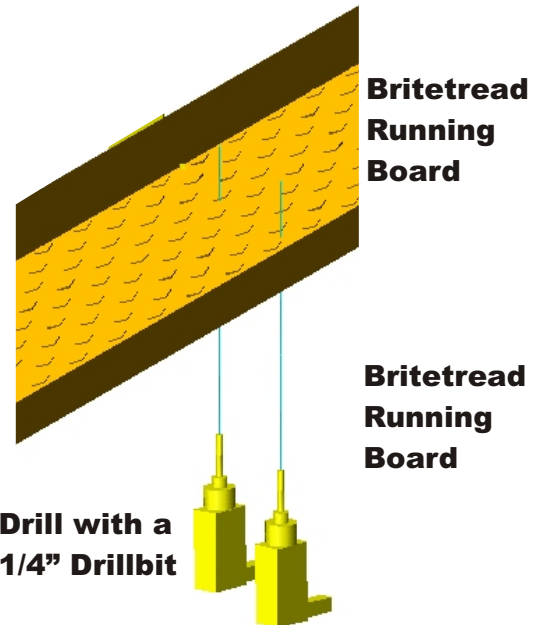
Drill with a
1/4" drillbit



Bracket to Board Mount



J K L



5

Drill two holes through the britetread mudflap and the sheet metal of the vehicle wheel well opening. Secure the britetread mudflap to the vehicle wheel well opening using 1/4 x 1" sheet metal screws (M). Tighten into place using a 3/8" wrench / or socket.

