



Dee Zee Bumper Installation Instructions

Congratulations on your purchase of a quality Dee Zee product. Dee Zee is recognized as having the highest quality accessories on the market today. We have earned this reputation by offering our customers a product they can be proud to place on their vehicles.

Note: Please take time to read all of the instructions before beginning this installation.

WARNING!

This product can reduce the driver's ability to clearly see roadways, vehicular or pedestrian traffic and other objects through the rear and side windows of the vehicle, which can cause an accident. Extra precautions should be taken when driving a vehicle with this product. Make all adjustments necessary to ensure maximum visibility, including but not limited to, changing mirror and seating positions. State and local laws may prohibit obstruction of windows in a moving vehicle.

WARNING!

These instructions are to be followed using the parts and fasteners supplied for proper installation. Any modifications or improper installation of this product will create a hazardous condition that can cause property damage, serious personal injury or death.

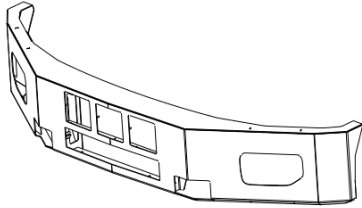
NOTICE

Any modification or unintended use of this product shall immediately void all manufacturers' warranties. Manufacturer disclaims all liability for injuries to persons or property resulting from any modification to, or unintended use of this product.

Front Bumper Installation Instructions DZ 62200 (2015-Current) Ford F-150

A

Bumper Assembly



Front Bumper

X1

B

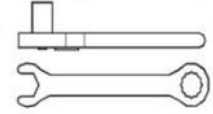
Fiber Washer



PN 589

X6

Tools Required:

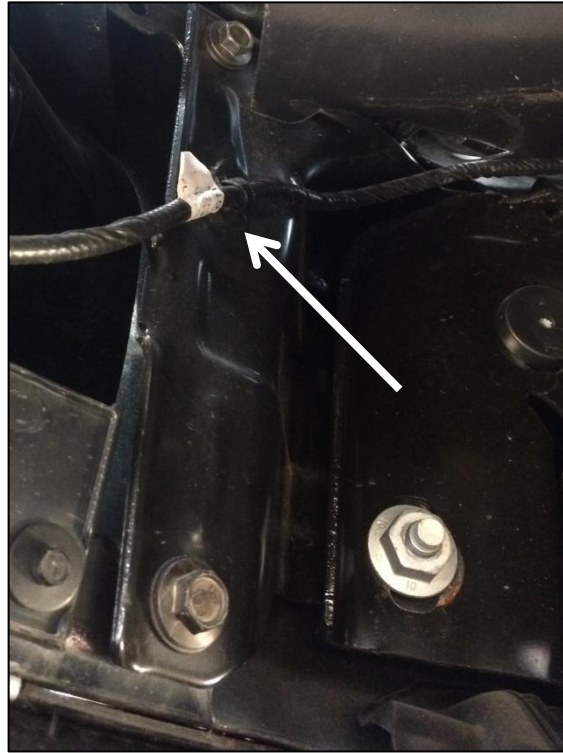
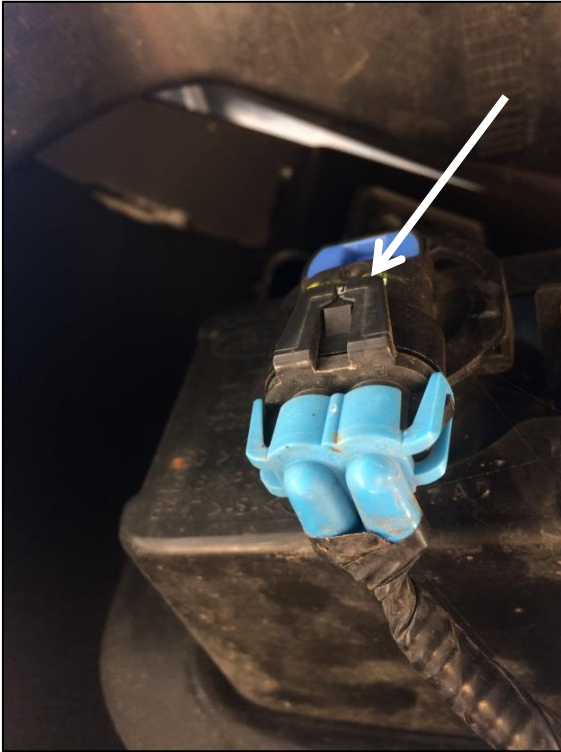


8mm
19mm
21mm

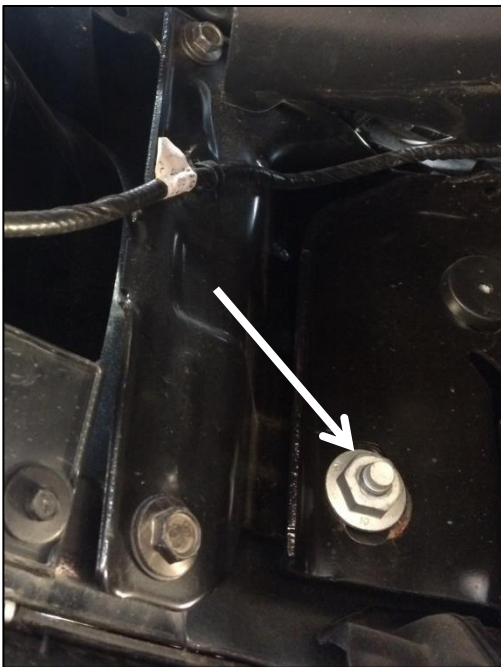
- 1** First remove the plastic on the front of the bumper by pulling the plastic forward.



- 2** Next unplug the light by pulling out on the tab as shown and down. Also remove zip-ties that hold the wiring to the bumper.

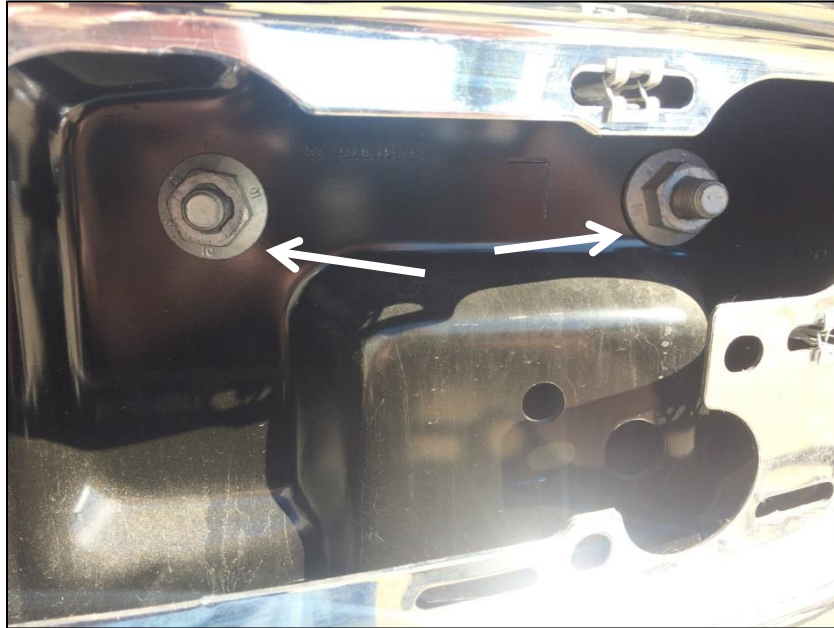


- 3** Remove the nut under the truck on the back side of the frame and pull the rubber shroud towards the rear of the truck to remove plastic clips as shown.



4

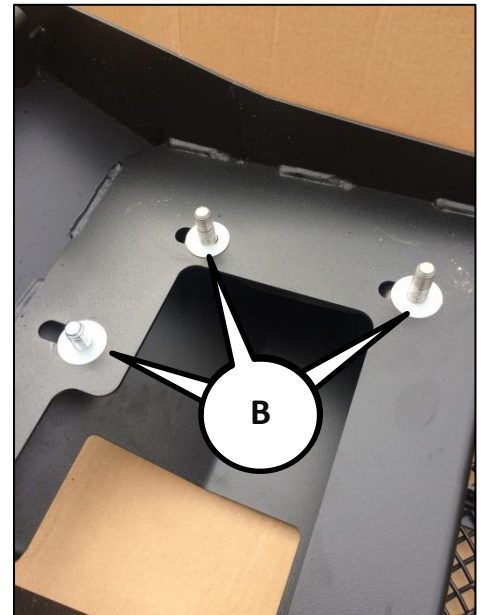
Remove the two nuts on the front of the bumper. Leave one nut loose so the bumper doesn't fall off when repeating on the passenger side.



Repeat steps 1-4 on the passenger's side. Then remove bumper from the truck.

5

The stud plate and the bolt that were removed from the original bumper will be reused. Install stud plate into the top two holes from the back side of the bumper and use washer (B) to hold bolt in place. Install bolt in the lower hole from the back side of the bumper and use washer (B) to hold in place. Repeat this on the passenger's side.



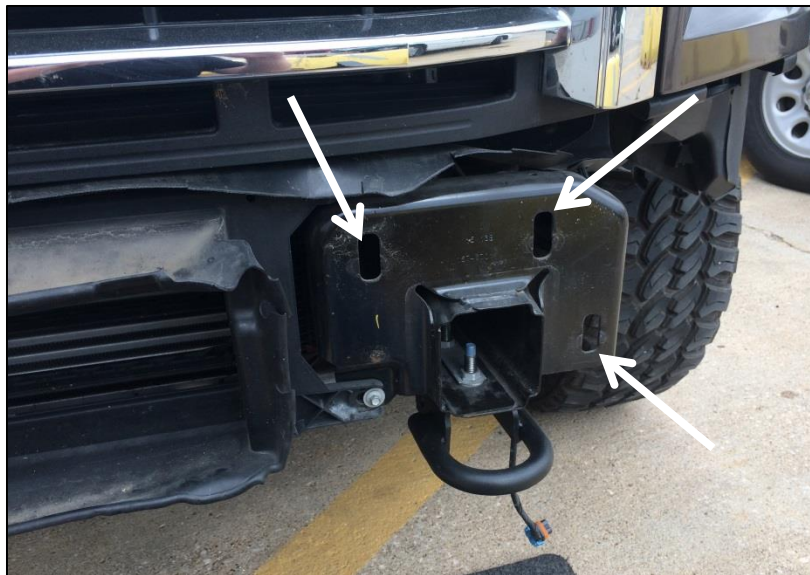
6

Remove the plastic tow hook cover by pulling down from the backside.

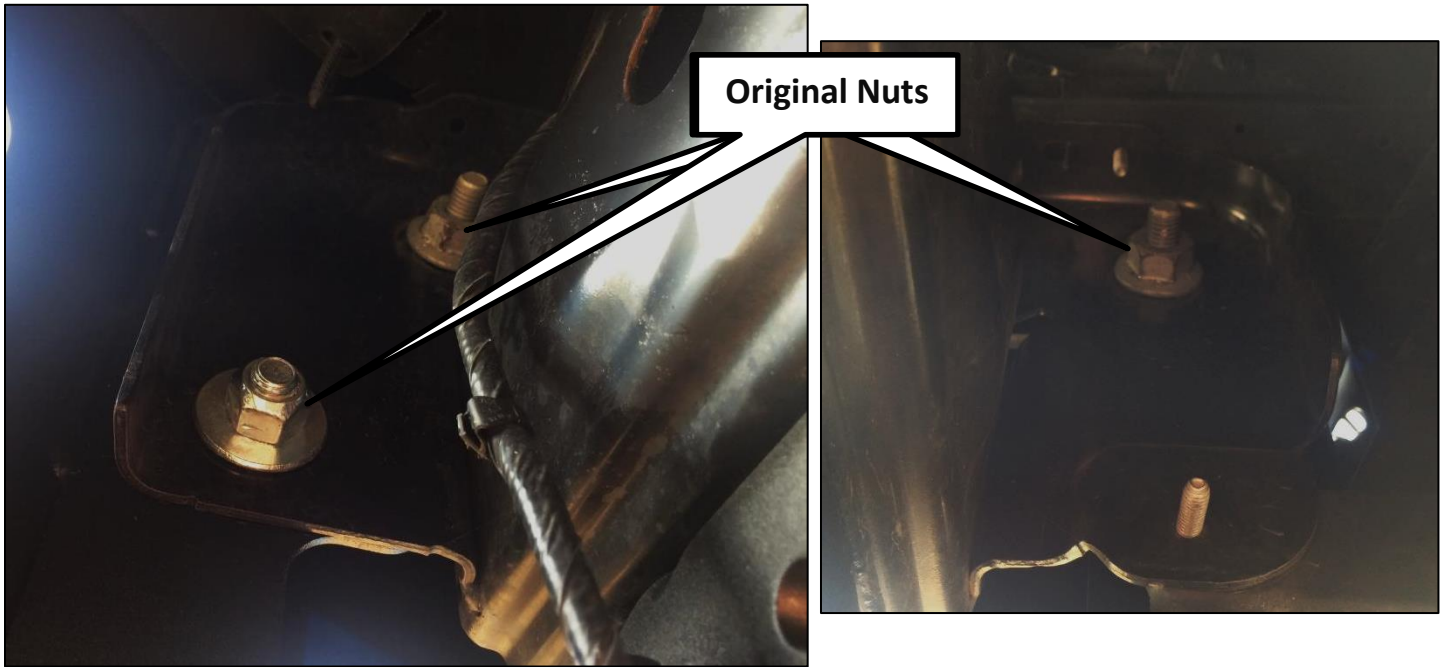


7

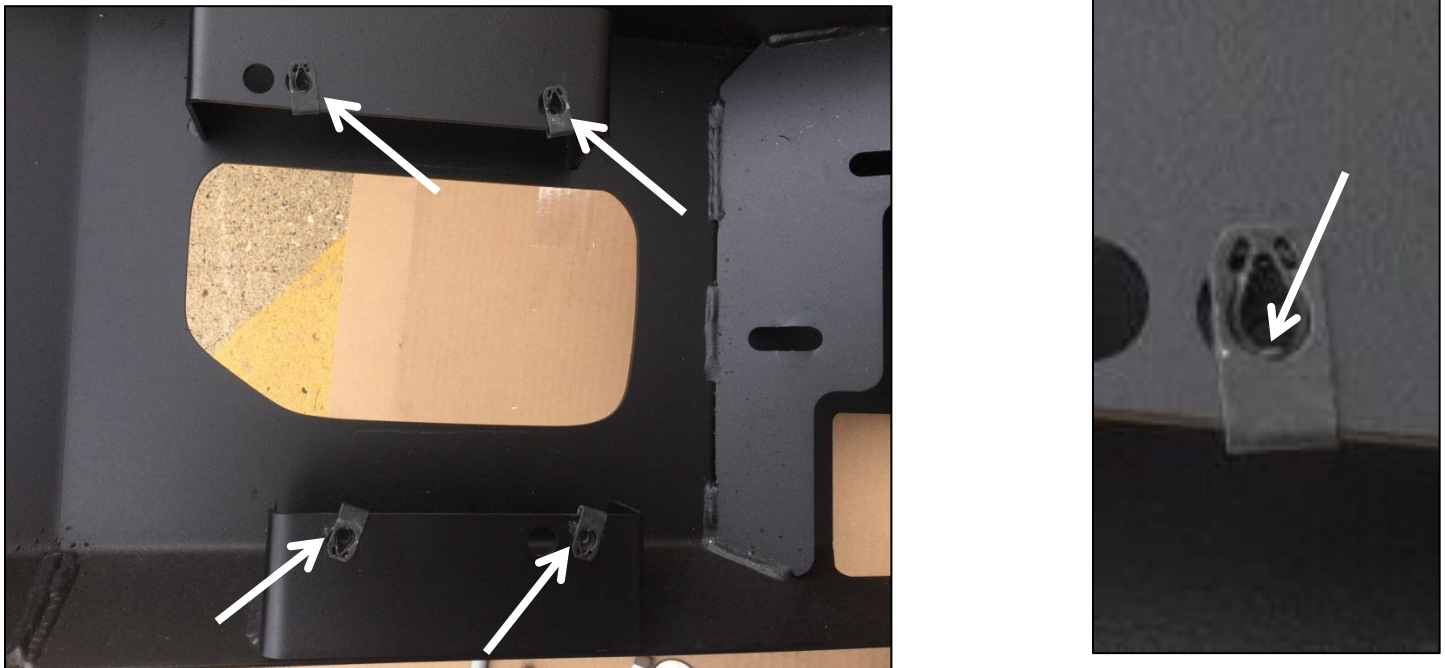
Install bumper onto the truck placing the bolts in the holes of the frame as shown.



- 8** Install the nuts onto the stud plate from the original bumper, and install original nut to the bolt in the lower hole of the bumper. Repeat on the passenger's side. Do not fully tighten hardware at this time.

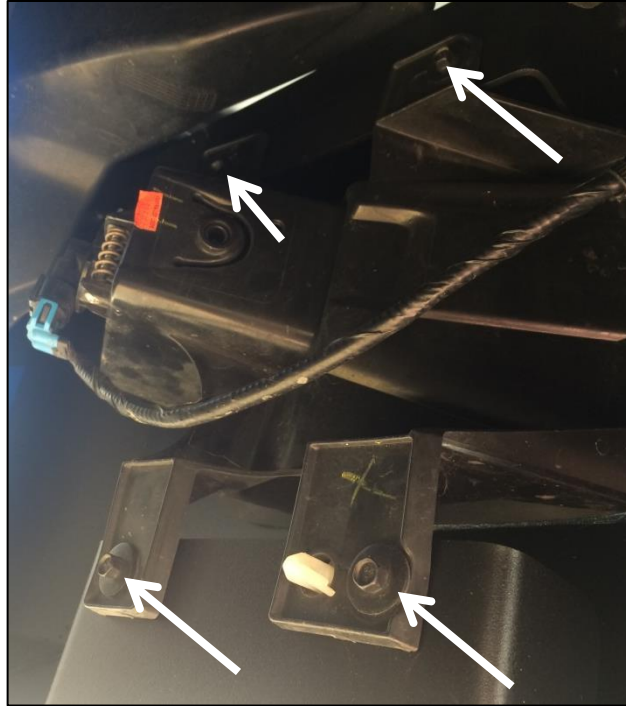


- 9** Install U-clips from original bumper for the fog lights into the holes in the bumper. To remove pull up on tab as shown.

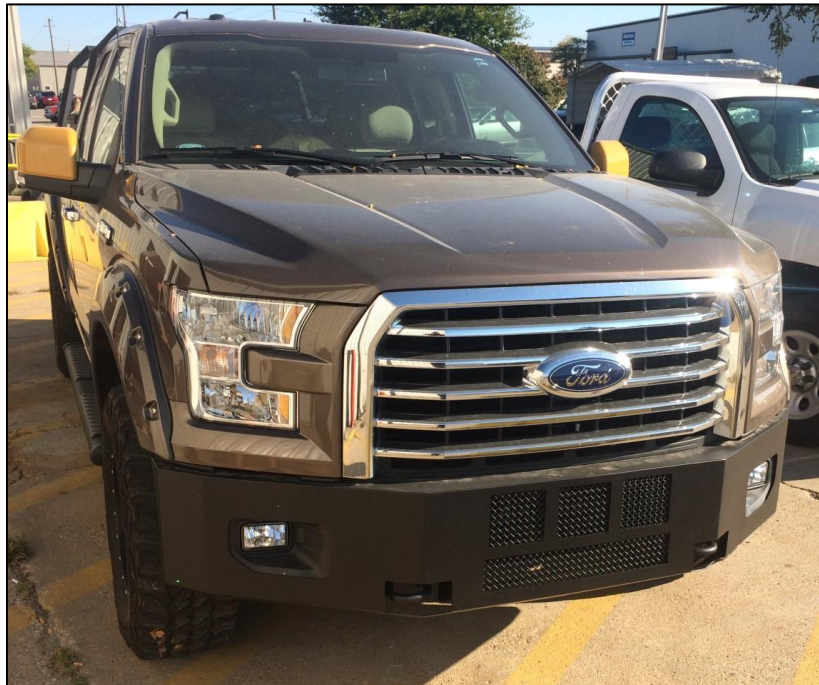


10

Reinstall fog light assemblies by using original bolts. Then plug the lights back in.

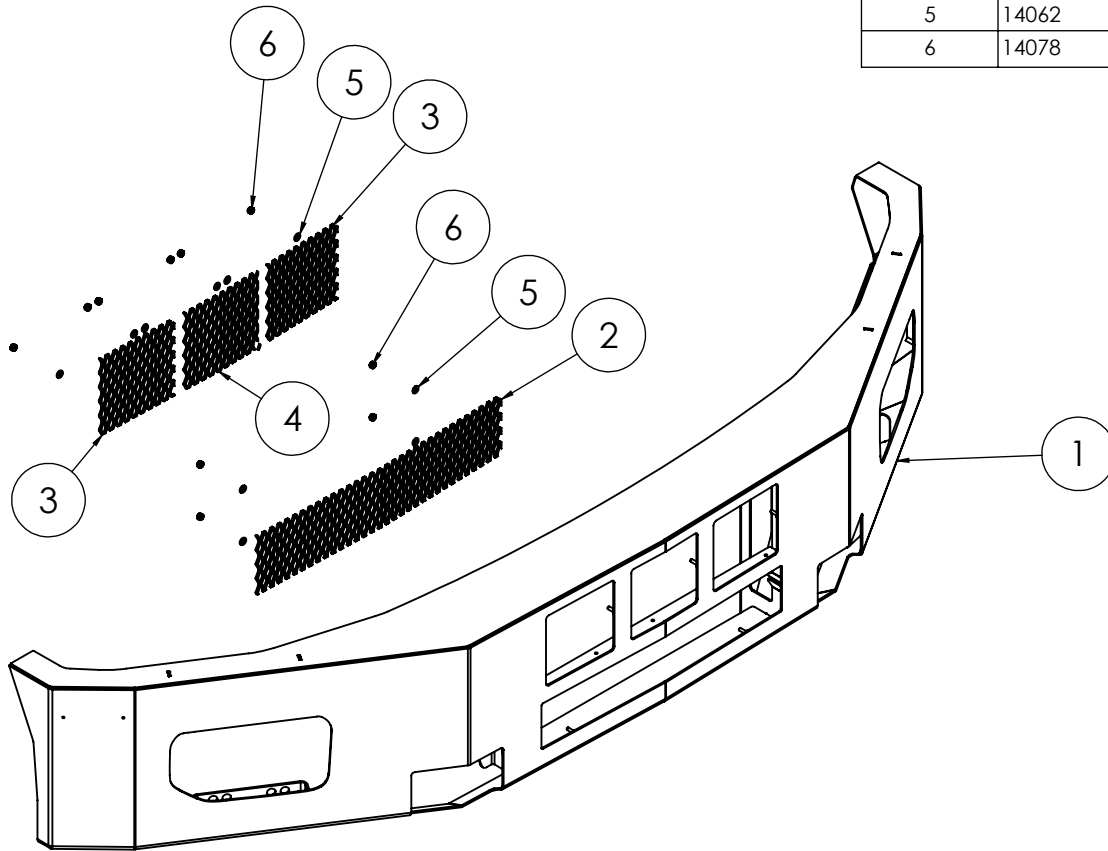


Center and level the bumper then tighten all the hardware



Assembled Front Bumper

ITEM NO.	PART NUMBER	DESCRIPTION	QTY.
	<i>Weldments</i>		
1	71140	Assembly - Front Bumper	1
	<i>Parts</i>		
2	71129	MS - 4-1/2" x 21-5/8" - Screen - w/Bends	1
3	71150	MS - 5-7/8"x6-3/8" - Screen	2
4	71151	MS - 5-7/8"x6-3/8" - Screen - w/Bends	1
	<i>Hardware</i>		
5	14062	#10 SAE Flat Washer	10
6	14078	#10-32 Nylon Lock Nut	10



Wednesday, November 02, 2016 8:38:06 AM

Project: DeeZee - 2015+ Ford F150 - Front Bumper

TITLE: Assembly - Front Bumper

SIZE DWG. NO. A 62200RAW

SCALE: 1:20 DO NOT SCALE DRAWING SHEET 1 OF 1

UNLESS OTHERWISE SPECIFIED:
 DIMENSIONS ARE IN INCHES
 TOLERANCES:
 FRACTIONAL ± 1/32"
 ANGULAR: MACH ± 1 BEND ± 1
 TWO PLACE DECIMAL ±.030
 THREE PLACE DECIMAL ±.010

DESIGN BY TJA
 Shelf #/ QTY
 NEW DXF
 Run QTY



Kelderman

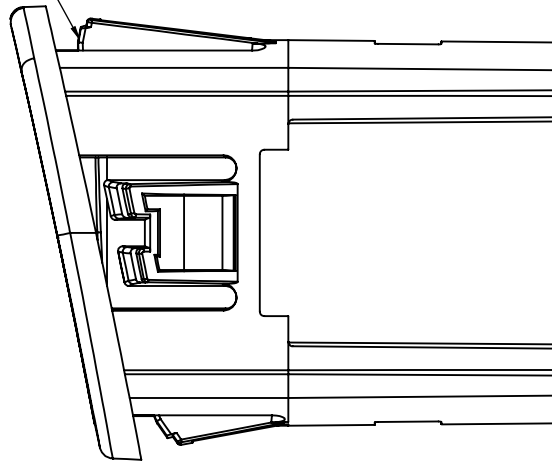
PROPRIETARY AND CONFIDENTIAL

THE INFORMATION CONTAINED IN THIS DRAWING IS THE SOLE PROPERTY OF KELDERMAN MFG. INC. ANY REPRODUCTION IN PART OR AS A WHOLE WITHOUT THE WRITTEN PERMISSION OF KELDERMAN MFG. INC. IS PROHIBITED.

MATERIAL
 FINISH
 WEIGHT 66.47

For some bumper applications, it will be necessary to tune the backup sensor housing to fit the new bumper. Most of the sensor housings utilize a plastic housing that snaps into the bumper. If the snap features do not work correctly, it will be necessary to file a small amount of the snap feature so that it snaps into the bumper correctly.

File away any extra plastic



UNLESS OTHERWISE SPECIFIED:				DESIGN BY	TJA	Wednesday, February 24, 2016 3:10:55 PM		
DIMENSIONS ARE IN INCHES TOLERANCES, Unless Specified FRACTIONAL $\pm 1/32"$ ANGULAR: MACH $\pm .5^\circ$ TWO PLACE DECIMAL $\pm .03$ THREE PLACE DECIMAL $\pm .010$				Shelf #/ QTY		Project: Purchased		
				NEW DXF		TITLE: Parking Sensor Bezel		
				Run QTY		DWG. NO. 80055 SCALE: 1:1		
				PROPRIETARY AND CONFIDENTIAL				kelderman
MATERIAL	THE INFORMATION CONTAINED IN THIS DRAWING IS THE SOLE PROPERTY OF KELDERMAN MFG. INC. ANY REPRODUCTION IN PART OR AS A WHOLE WITHOUT THE WRITTEN PERMISSION OF KELDERMAN MFG. INC. IS PROHIBITED.				SHEET 2 OF 2			
FINISH								
WEIGHT								