



**INSPECT YOUR PRODUCT FOR DAMAGE & MISSING
PARTS BEFORE PROCEEDING TO INSTALLATION**

PROCEDURE FOR RETURNS OR MISSING HARDWARE

Operating, servicing, and maintaining a passenger vehicle can expose you to chemicals such as lead, phthalates, engine exhaust, and carbon monoxide that are known to the State of California cause cancer and birth defects or other reproductive harm. To minimize exposure, service your vehicle and its accessories in a well-vented area and wear gloves or wash your hands frequently.



Thank you for choosing Dee Zee to add function and accessorize your vehicle. Dee Zee has been a staple brand in the truck accessory market since 1977 and we hold a reputation of quality manufacturing based in America's Heartland. Our products are born through careful engineering and backed by industry leading warranty programs. We appreciate the opportunity to serve you and your vehicle!

Review the instruction pages in their entirety to prepare the required tools

Warning: Please check for wiring or other obstructions before drilling any holes in the vehicle. If it is necessary to drill any holes, Dee Zee recommends putting a sealant or rust inhibitory around all holes drilled into the body of the vehicle.

It is the sole responsibility of the vehicle owner to check for tire clearance. It is unlawful and dangerous to ride on any external vehicle step while the vehicle is in motion.

Cleaning: To be entitled to all warranty rights offered with the product, Dee Zee steps need to be cleaned regularly with a mild detergent. Do NOT use abrasive cleaners. For stainless steel products, the application of a high grade automotive wax is recommended.



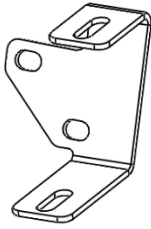
Dee Zee Cares - Please Recycle

JK Lower Light Bracket Installation Instructions

DZ 4447JK Jeep Wrangler JK 2007-2018

A

Driver Bracket

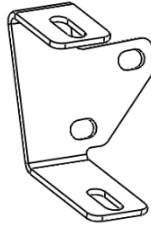


B 2588LP

X1

B

Passenger Bracket

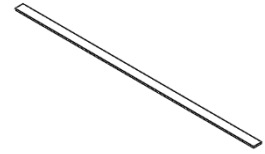


B 2588RP

X1

C

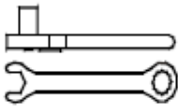
Gasket



FGT 49

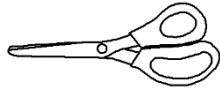
X1

Required tools



Ratchet / Wrench

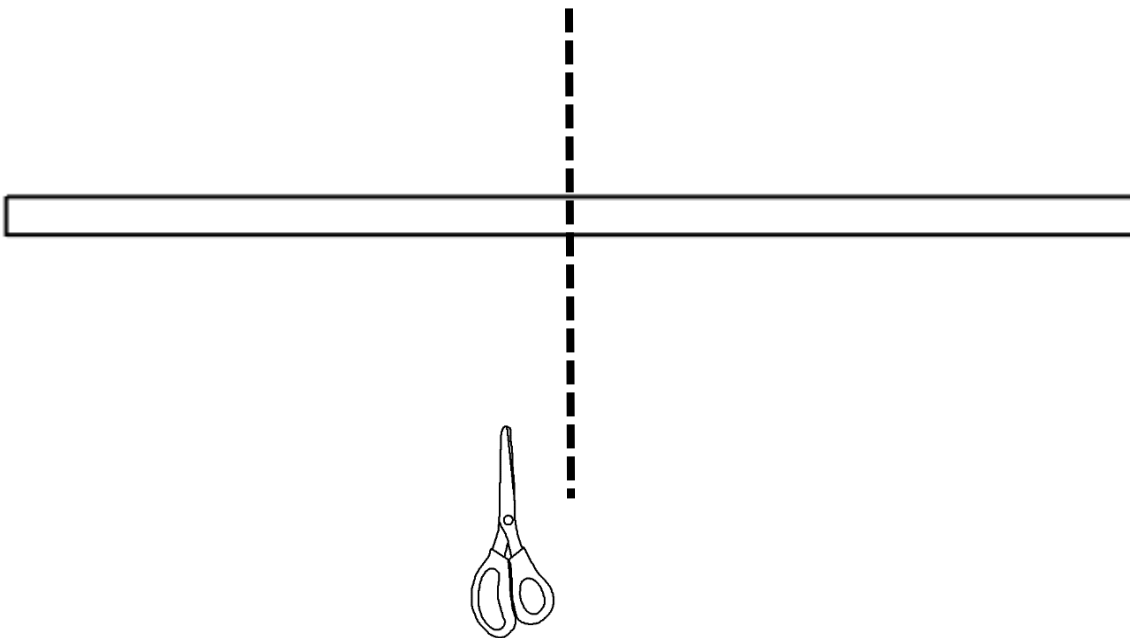
Torx 40



Scissors

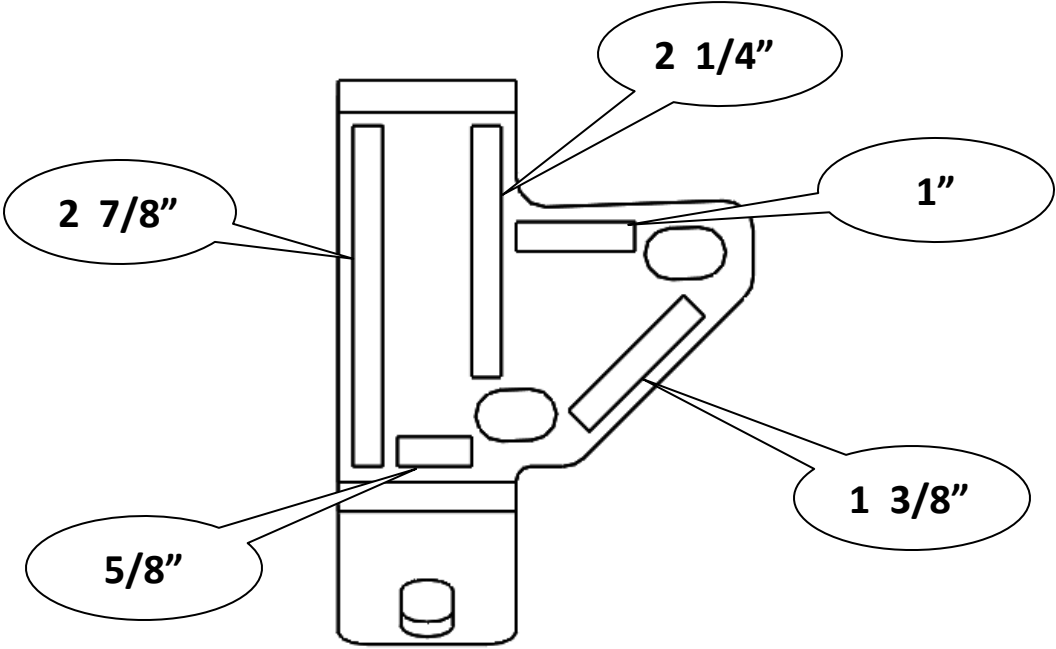
1

First cut the Gasket (C) into 10 pieces. Lengths are $2 \frac{7}{8}$ " , $2 \frac{1}{4}$ " , $1 \frac{3}{8}$ " , 1" , $\frac{5}{8}$ ". There will need to be two of each length.



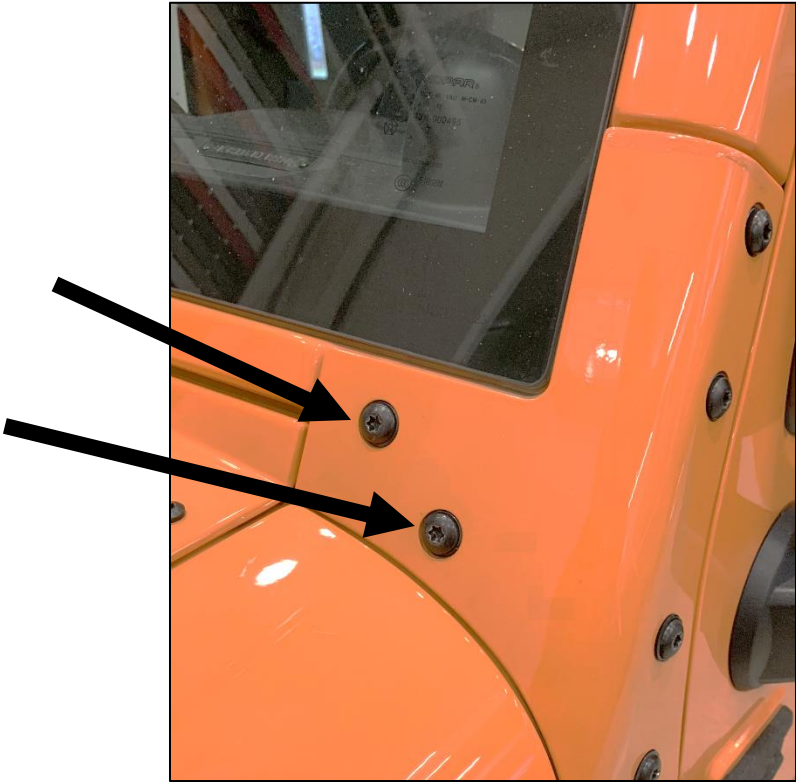
2

Peel off the backing of the Gasket (C) and place the gasket on the back side of the Driver side bracket (A) as shown in the picture below.

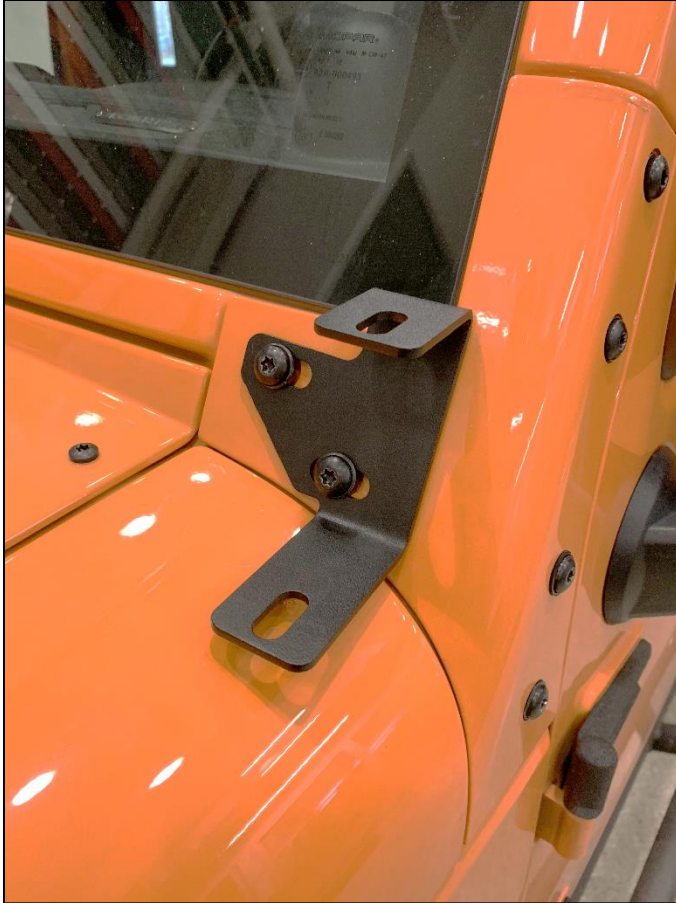


3

Remove the two bolts shown in the picture below.



4 Install Driver Bracket with gasket where the bolts were removed and reinstall bolts. Fully tighten hardware at this time.



When Lower Light bracket is mounted the windshield will not be able to be folded down. Brackets A and B are not intended for a Light Bar.

Repeat Steps 2-4 on Passenger side Using bracket B instead of A.

Learn more about off-road lights we have.