



## Dee Zee Tie Down Installation Instructions

*Congratulations on your purchase of a quality Dee Zee product. Dee Zee is recognized as having the highest quality running boards and accessories on the market today. We have earned this reputation by offering our customers a product they can be proud to place on their vehicles. Dee Zee meets all the criteria of manufacturing a custom-fit product which guarantees it to be the easiest product to install.*

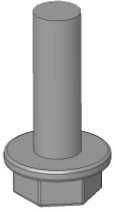
**Note:** Please take time to read all of the instructions before beginning this installation.

**Warning!** Please check for wiring or other obstructions before drilling any holes into the vehicle. If it is necessary to drill any holes into the vehicle, Dee Zee recommends putting a sealant or rust inhibitor around all holes drilled into the body of the vehicle.

*Note: Continuously check the torque on your tie downs to ensure that the assembly has not come loose.*

# Dee Zee Tie Down Installation Instruction

## DZ 97903

**A**

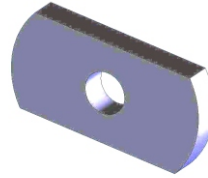
PN 525

X2

**B**

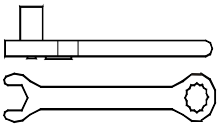
TD 97903

X2

**C**

PN 835

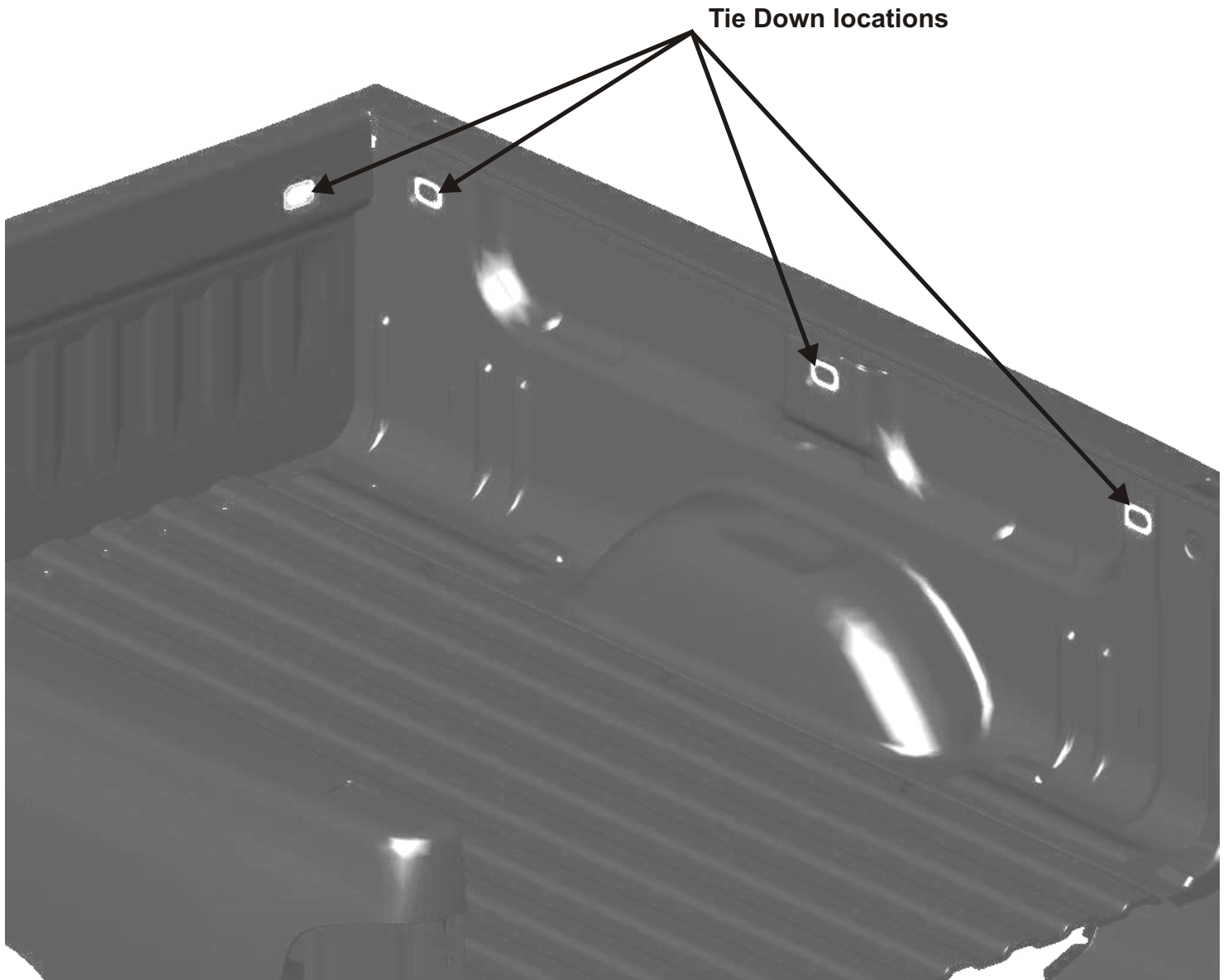
X2

**Tools Required:****Outils Nécessaires:****Ratchet / Wrench**  
**Sizes: 10mm**

## DZ 97903 Installation Instructions

**(Note: will not work with slide rail system installed)**

Step 1: Select the indented location(s) in the bed of your truck that you would like to mount the tie down to. Refer to the images below for some available areas. Remove the plastic cover from the hole(s).



Step 2: Attach the 8mm bolt and 8mm threaded plate to the tie down as shown in the image below. With the plate towards the end of the bolt and in the rotated position as shown, insert the tie down assembly into the hole of the vehicle where the cover was removed.



Tighten the bolt down by hand. Ensure that the plate has rotated in between the legs of the tie down to ensure a tight fit (refer to the image below). Once tight to the vehicle, torque the bolt down with a 13mm wrench to 16ft/lbs.

