



Dee Zee Tailgate Protector Installation Instructions

Congratulations on your purchase of a quality Dee Zee product. Dee Zee is recognized as having the highest quality running boards and accessories on the market today. We have earned this reputation by offering our customers a product they can be proud to place on their vehicles. Dee Zee meets all the criteria of manufacturing a custom-fit product which guarantees it to be the easiest product to install.

Note: Please take time to read all of the instructions before beginning this installation.

Warning: Test fit tailgate protector on your vehicle tailgate to obtain proper placement before installing this tailgate protector.

Cleaning instructions: To maintain the bright finish of your Dee Zee tailgate protector, clean with a mild detergent and use a high grade automotive type wax. **DO NOT USE ABRASIVE CLEANERS ON THIS PRODUCT!**

**DZ 2139/ DZ 2139B/ DZ 29439
(2008 – Current) Ford Super Duty Truck W/Step**

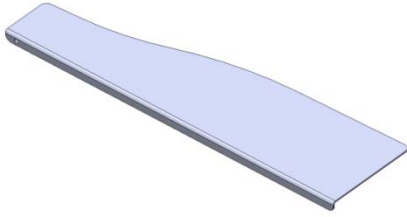
A

Left Tailgate Protector

TP 2139-1

TP 2139-1B

TP 29439-1



X1

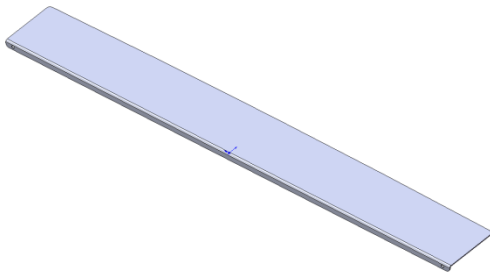
B

Middle Tailgate Protector

TP 2139-2

TP 2139-2B

TP 29439-2



X1

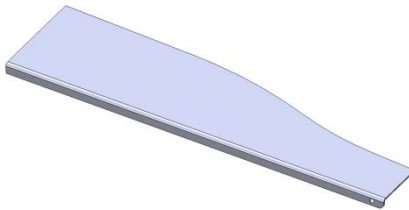
C

Right Tailgate Protector

TP 2139-3

TP 2139-3B

TP 29439-3



X1

D

Alcohol Pads

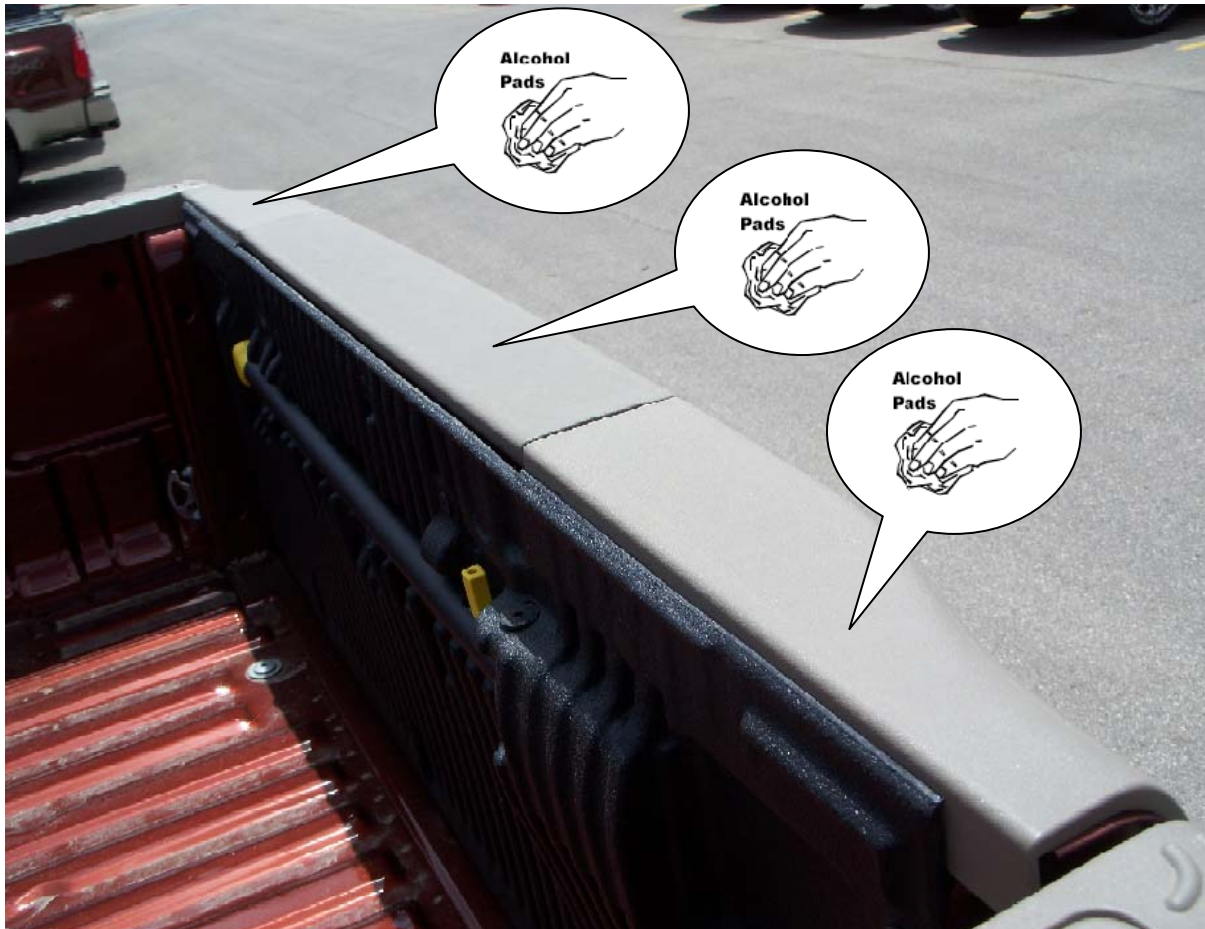


ALPAD

X2

1

Clean the top surface of the truck tailgate before installation in order to remove any dirt, then use the alcohol pads (D) to clean the surface of any further contaminants to promote better adhesion to the truck tailgate surface.



2

Place the left, middle, and right tailgate protectors (A, B, C) onto the tailgate, but do not remove the tape yet. Get the three tailgate protectors into a position where they fit well and make sure that they don't hang over any gaps where the tailgate may catch when pulled out.



3

Now that the tailgate protector locations along the vehicle are known take the middle tailgate protector off the tailgate and set it aside. Remove the backing off the tape on the bottom of the middle tailgate protector. Recalling the location of the middle tailgate protector from step 2, line up and slowly lower the middle tailgate protector onto the truck tailgate. Press down firmly onto the middle tailgate protector for 30 seconds to ensure proper adhesion to the plastic bed cap. Using the middle tailgate protector and the locations obtained in step 2 as a guide, repeat step 3 for the left and right tailgate protectors.