



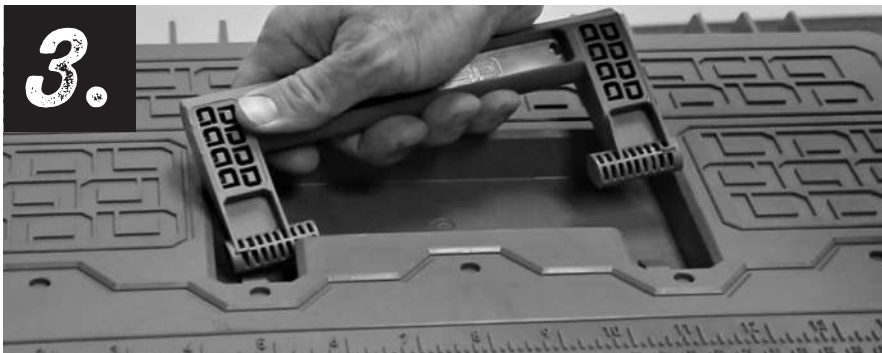
# HOW TO: CROSSBOX INSTALL



**STEP 1:** Place Crossbox lid on black base. Insert steel hinge pin into one end while making sure to insert through both lid and base channels. Tap into place with a hammer.



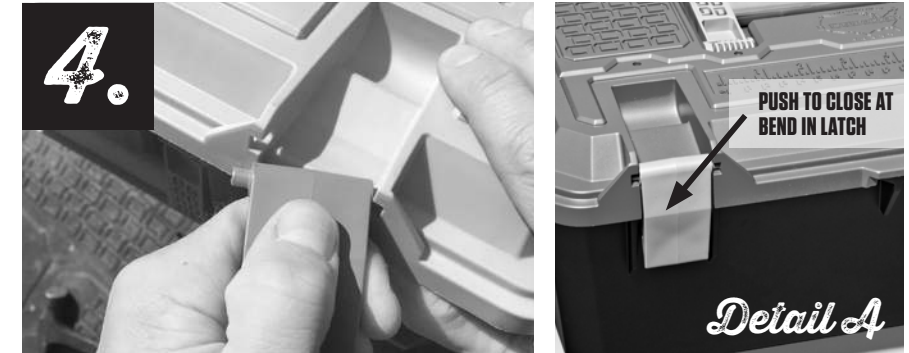
**STEP 3:** Place handle at a 45 degree angle and insert one end of handle into pivot pocket. Rotate the handle to snap the opposite end of handle into pivot pocket. Make sure the DECKED logo is facing up when closed.



**STEP 2:** Start pressing cord gasket into lid channel and work your way around the lid as you go. Start at the middle of the hinge side. Make sure to leave a 1" gap in the cord gasket—otherwise you may get a vacuum lock. You may need to tear a small piece off the cord gasket to leave a gap.



**STEP 4:** Hold latch horizontally with the hook side down. Insert pin into fully enclosed hole. Rotate latch horizontally and snap other pin into hole. Repeat for other latch. **HELPFUL TIP:** It's easier to close and lock the latches once installed by pushing at the bend. See **DETAIL A** below.



Check out the collection of truck bed accessories we offer.