



Part 1 – features

Part 2 – benefits



# Part 1 - features

# Product design goals

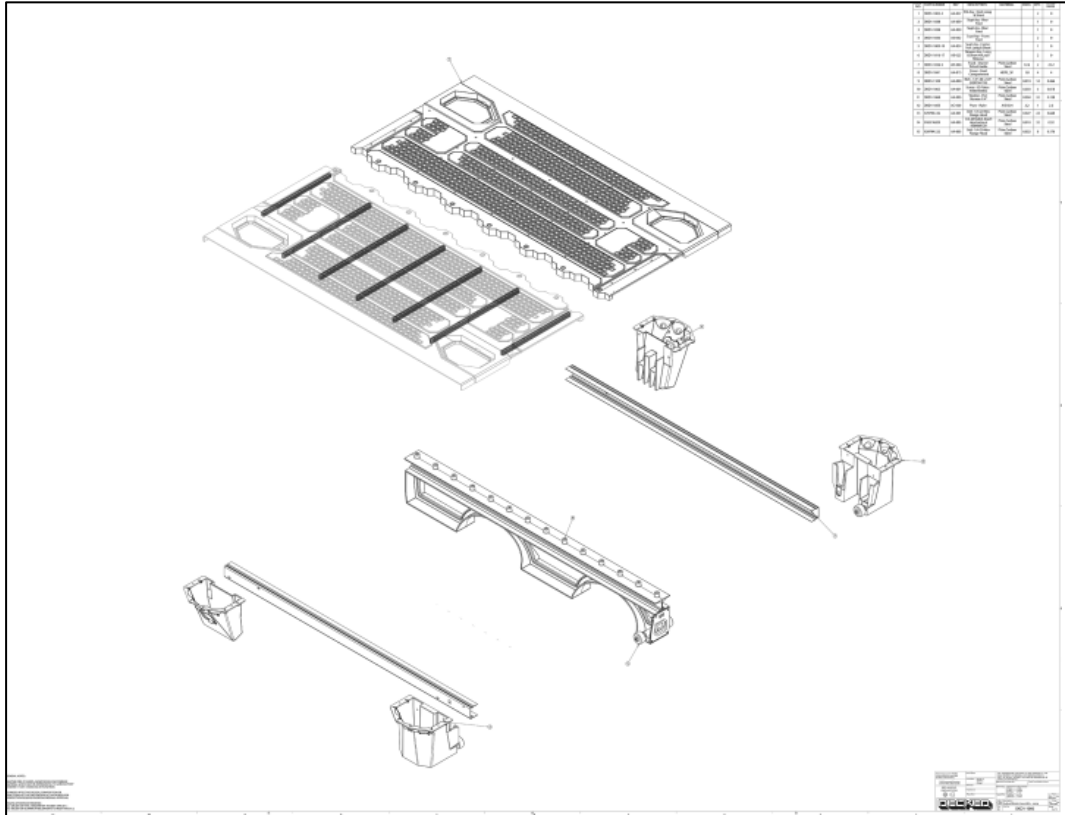
- ✓ Functional storage
- ✓ Ergonomic access
- ✓ Fits all full-sized pickups... almost
- ✓ Easy to install
  - ✓ Without damaging the truck
- ✓ Durable
- ✓ Weatherproof
- ✓ Affordable
- ✓ Customizable
- ✓ Easy to ship: Stackable cartons
- ✓ Made in the USA
  - ✓ Engineered in Detroit

# What is DECKED?



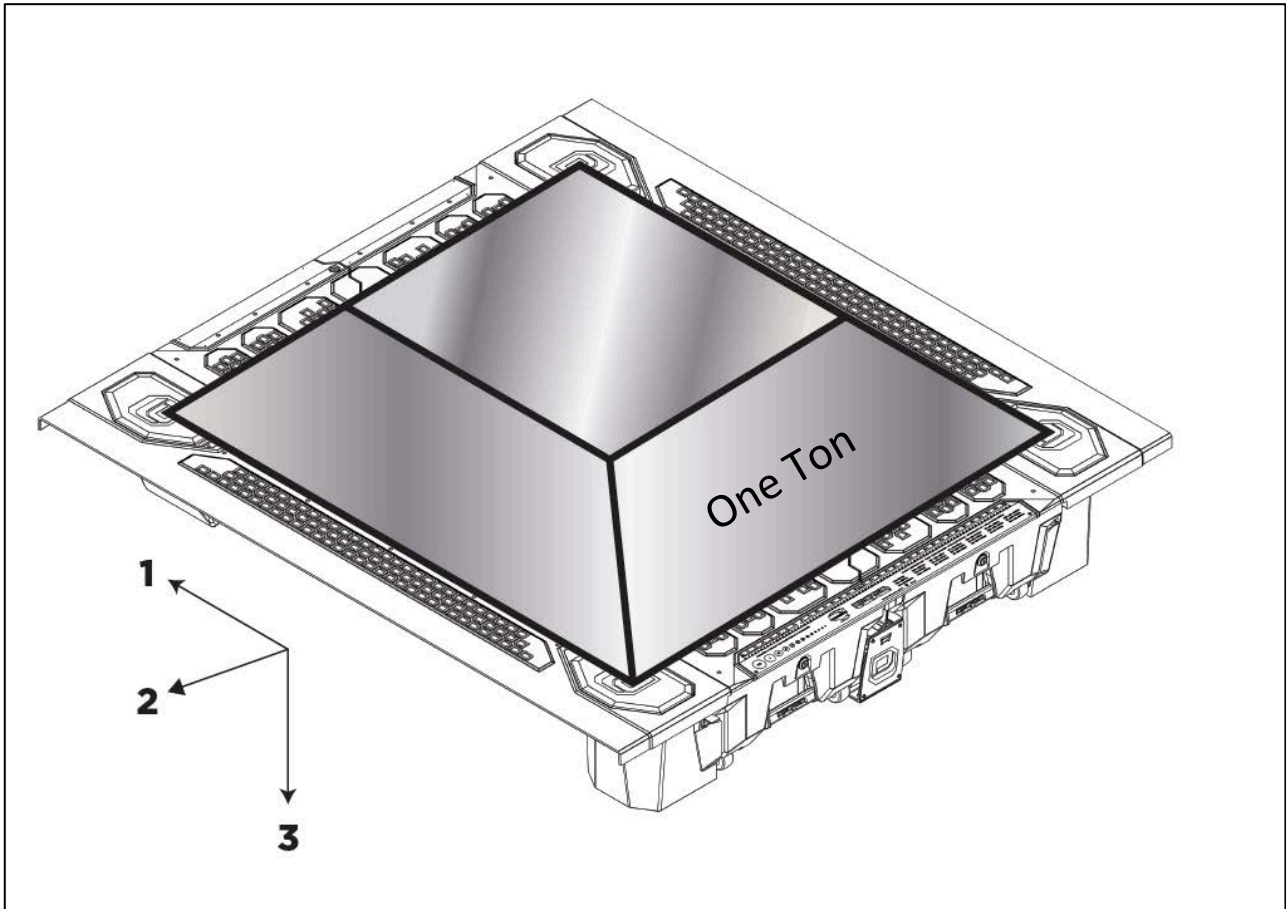
- [Drawer storage system](#) for pickups
  - Each drawer holds 200 lbs
  - Weatherproof drawers
- Still use your truck bed!
  - 2,000 lbs load rating
- Attaches to the existing tie downs
- Formed to fit every full-sized pickup series
- Main ingredients are HDPE and steel
- 5 ½' (~220 lbs) and 6 ½' (~240 lbs) SKUs

# The “structure”



- Most of the structure isn't obvious
  - 6 or 7 lateral steel tubes under each deck half;  
1" x .5" galvanized steel
    - Identified by dots in the deck channels
  - Steel c-channels are also wheel tracks
  - Ammo cans in each corner
    - Secondary storage
  - “Vert” is an I-beam, behind the bottle opener

# Engineered, correctly, in Detroit



- The deck load rating is 2,000 lbs
  - Evenly distributed over the entire deck
  - DECKED can handle
    - 6,000 lbs vertically
    - 4,000 lbs laterally
    - 2,000 lbs longitudinally

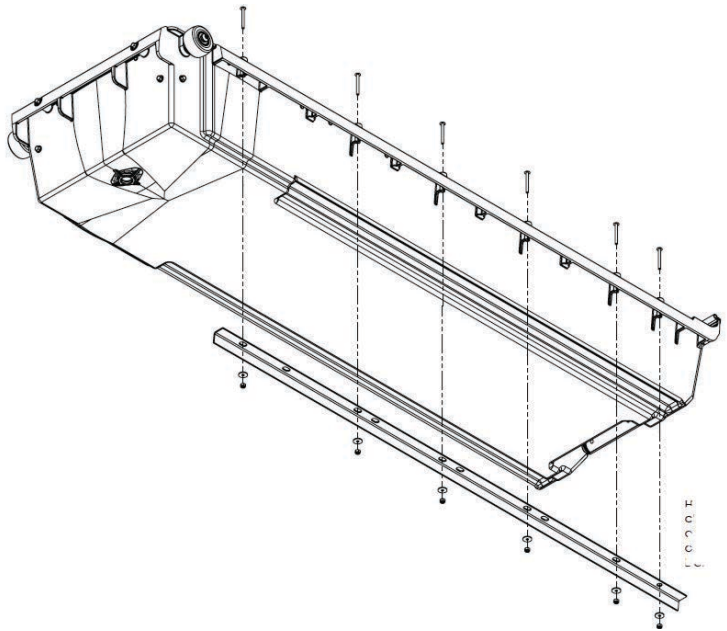
For a moment in time

# Drawers

Cabside wheels



Tailgate wheels



- Four wheels on each drawer – very smooth operation
- 200 lbs load rating for each drawer
- Steel L-brackets improve rigidity
- Cast aluminum handle – easy one-hand operation
- 48” drawer travel – both lengths of DECKED system
  - See wheel channel stop
- Note: Drawers are not sealed tight
  - Dust, fine mist or other airborne particles can get into the drawers
- Drawers are designed to not hit the tailgate
  - Heavy loads might interfere
  - Tailgate cables vary in length, which can result in rubbing

# Deck halves



- Formed to fit each truck series
  - ~1/2" gap on each outer edge
    - To accommodate truck "build slop"
    - And to accommodate spray-in liners
- Lateral steel tubes provide strength
  - 10.7" or 13" spacing (dots in deck channels)
  - "Receive" track mounting screws
    - Custom Core Trax or T-tracks (Yakima or Thule)
- HDPE with maximum % of UV inhibitors
- Drip edge on each end



# Attaching DECKED to the pickup

J-hook to truck



J-hook to ammo can



- J-hooks affix ammo cans to existing tie downs
  - Six different length J-hooks
  - Multiple ammo can receptacles
- Special brackets replace the existing tie downs in:
  - F150 short bed '04-'14 (cabside only)
  - Tundra
  - Super Duty (cabside only)
  - F150 aluminum (cabside only)
- Attaching to the existing tie downs is engineering validated
  - No drilling

# Cartons



- DECKED branded cartons are
  - 21" X 39" X 66" or 77"
  - ~240 lbs or ~260 lbs
    - Short or long SKUs
- Cartons can be stacked
- Accessories are shipped separately



## Part 2 – benefits

# Ergonomic storage is better



Brynn, DECKED's snowboarder/accountant, drawer surfing. Please don't do this if you weigh a lot more than Brynn

- Smooth-rolling drawers make access easy
  - No crawling on your knees onto the bed to fetch your tools

# Keep your stuff secure



There is very little room between the tailgate and DECKED (the distance varies by truck series). That makes it impossible to open the drawers very far without keys

- Tailgate locks, combined with the DECKED design, keeps your stuff secure
  - DECKED drawer locks are a \$30 MSRP accessory

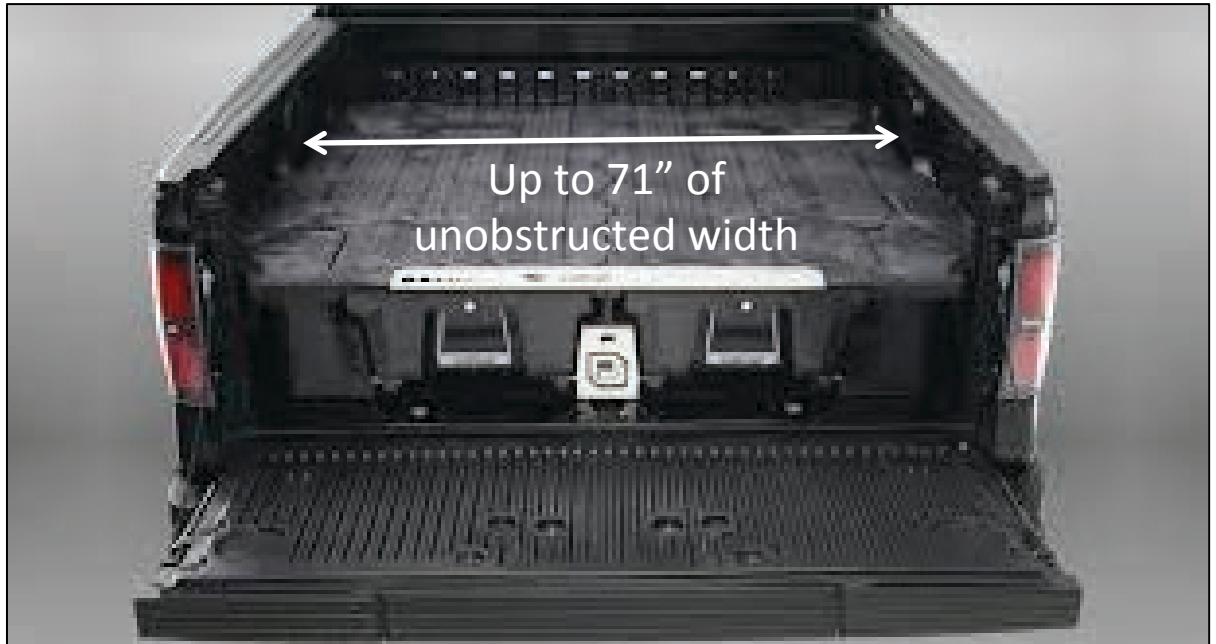


# DECKED drawers are weatherproof



- Rain won't get into DECKED drawers
- The drawers aren't sealed tight. Airborne particulate can get in
  - Mist, dust, fine-particle snow can get in (typically in very small amounts)
- Be careful at automatic car washes
  - Most are probably OK, but they vary a lot and the consumer needs to be cautious
- Ammo cans are not waterproof
  - Drain holes are optional

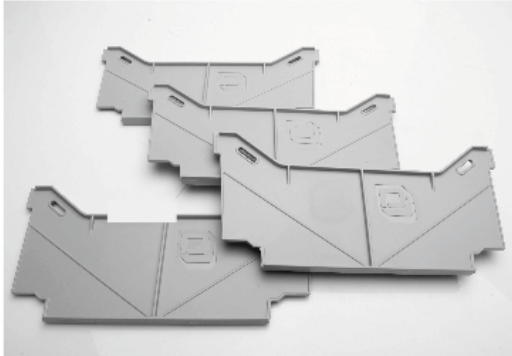
# Storage and bed utility



- Still use your bed
  - More surface area than before
    - No wheel wells in the way
  - DECKED is 12" tall
    - Truck beds are 20.5" – 23" tall

# Customizable

Set of four dividers



Set of two trays



Set of drawer locks



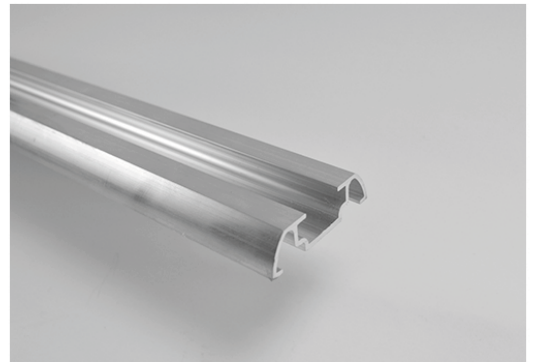
Drain plugs (short only)



Core Trax



T-tracks (Yakima or Thule)





# DECKED: What can go wrong?

- The deck can puncture or crack
  - Drop a heavy & sharp object on it
- Brass threaded inserts on the vert will “spin out” if installed with power tools
  - Result = poor deck-to-vert grip